

User Manual

Manual de Usuario

Manuel de l'Utilisateur

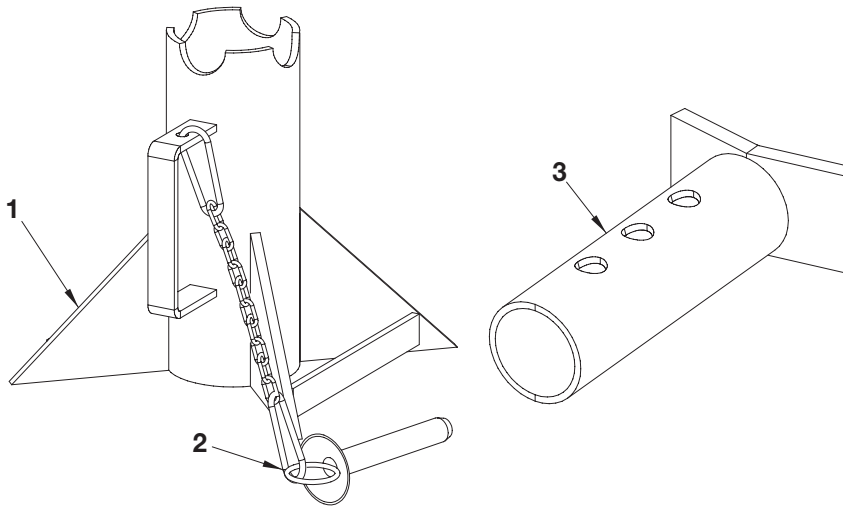
Customer Service
US: 1-800-645-2986

Servicio de atención al Cliente
US: 1-800-645-2986

Service à la clientèle
Canada: 888-645-2986

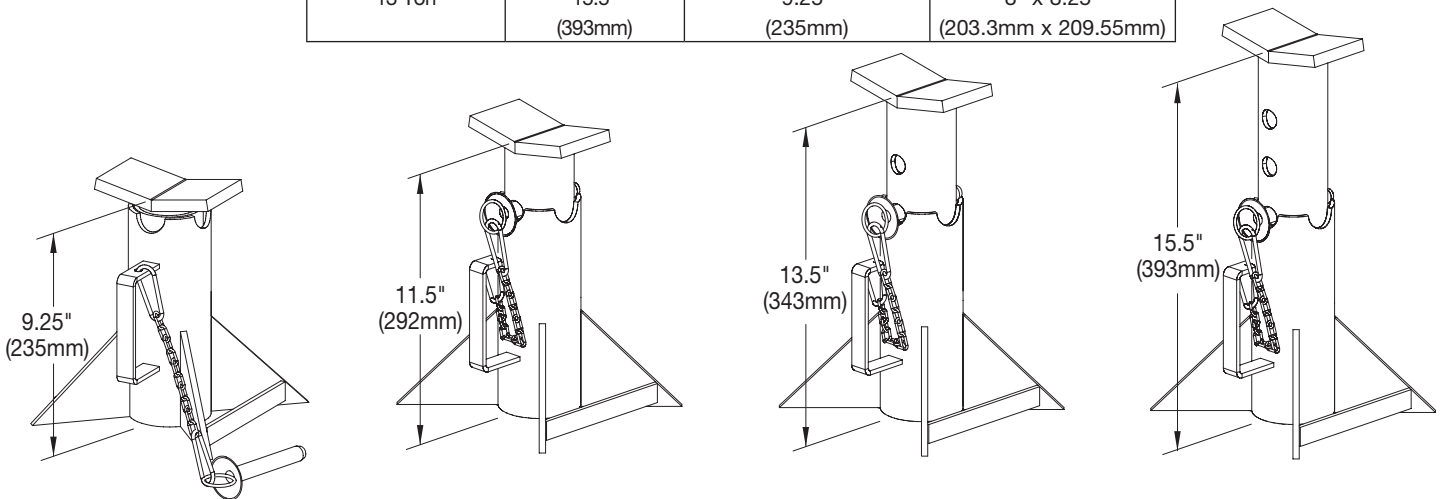
Model 988870

Jack Stand



CONTENTS		
Ref.	Qty.	Description
1	1	Jack Stand
2	1	Locking Pin
3	1	Extender Arm

SPECIFICATIONS			
Capacity (Per Pair)	Maximum Height	Minimum Height	Base Size
13 Ton	15.5" (393mm)	9.25" (235mm)	8" x 8.25" (203.3mm x 209.55mm)



WARNING

To avoid crushing and related injuries:

- Read and follow all instructions provided with and on this device before operating.
- Inspect stand prior to use
- Do not use if damaged, excessively worn, modified, or in poor condition.
- Do not exceed rated capacity.
- Use only on hard, level surfaces, capable of sustaining rated capacity load
- Center load on saddles and verify unit stability.
- Use both stands together to support one end of vehicle at a time.
- Do not alter stand or use adaptations, accessories, or lubricants not included with device.
- Failure to heed these warnings may result in personal injury and/or property damage.