

User Manual

Manual de Usuario

Manuel de l'Utilisateur

Customer Service
US: 1-800-645-2986

Servicio de atención al Cliente
US: 1-800-645-2986

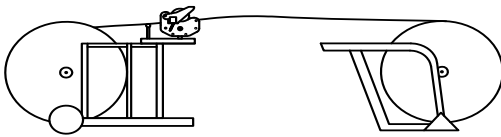
Service à la clientèle
Canada: 888-645-2986

Model 320794

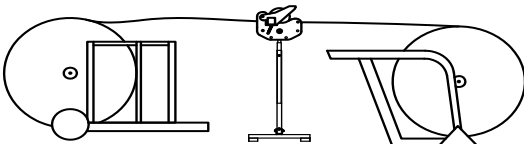
Wire Meter Counter

Operation Instructions

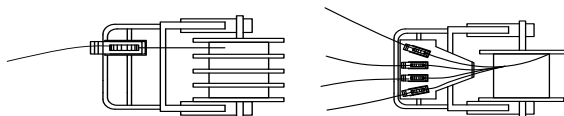
Keep wire as horizontal as possible.



Slowly pull wire as steadily as possible and pull it over back of payout unit.

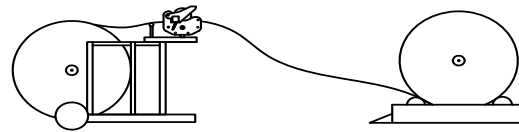


Either measure each leg by single paralleling with a compartment reel or direct paralleling 4 legs with 4 meter.

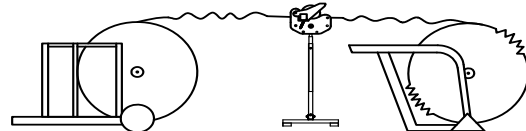


Warnings

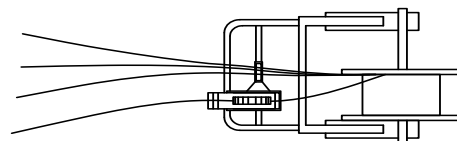
Do not pull in the wire from extreme highs or lows.



Make sure there is no vibration or any jerking motion and do not pull wire from front of payout unit.

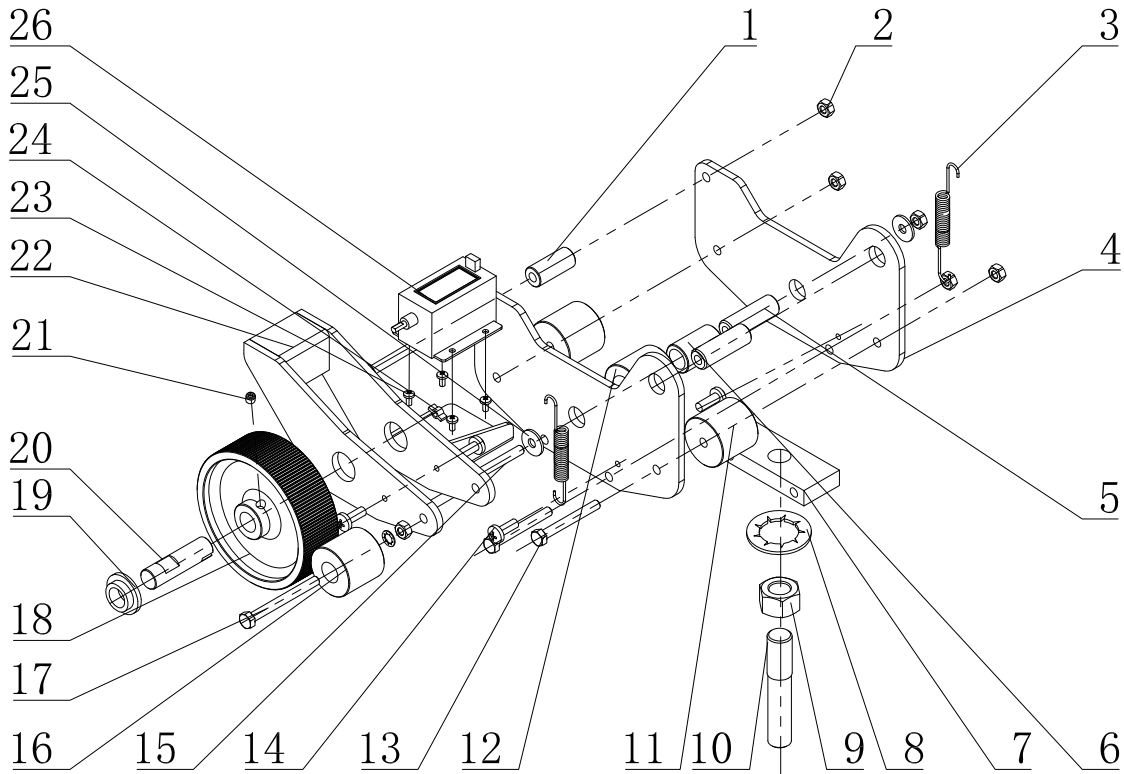


Do not measure one leg only and bypass all other legs.



Wire Meter Counter

Explode View



Part List

No.	Description	Qty.	No.	Description	Qty.
1	Hollow Shaft A	1	14	Cross Screw M6x16	4
2	Lock Nut M6	7	15	Hex Bolt M6x55	1
3	Tension Spring	2	16	Wheel C	1
4	Side Plate	2	17	Hex Bolt M6x60	1
5	Hollow Shaft B	2	18	Idler Wheel	1
6	Hollow Shaft C	1	19	Cap	2
7	Bottom Plate	1	20	Alxe	1
8	Lock Washer 16	1	21	Set screw	1
9	Nut M16	1	22	Arm Frame	1
10	Stud M16	1	23	Screw M4x7	4
11	Wheel A	2	24	Coupling Piece	1
12	Wheel B	1	25	Big Washer 6	2
13	Hex Bolt M6x50	5	26	Counter	1