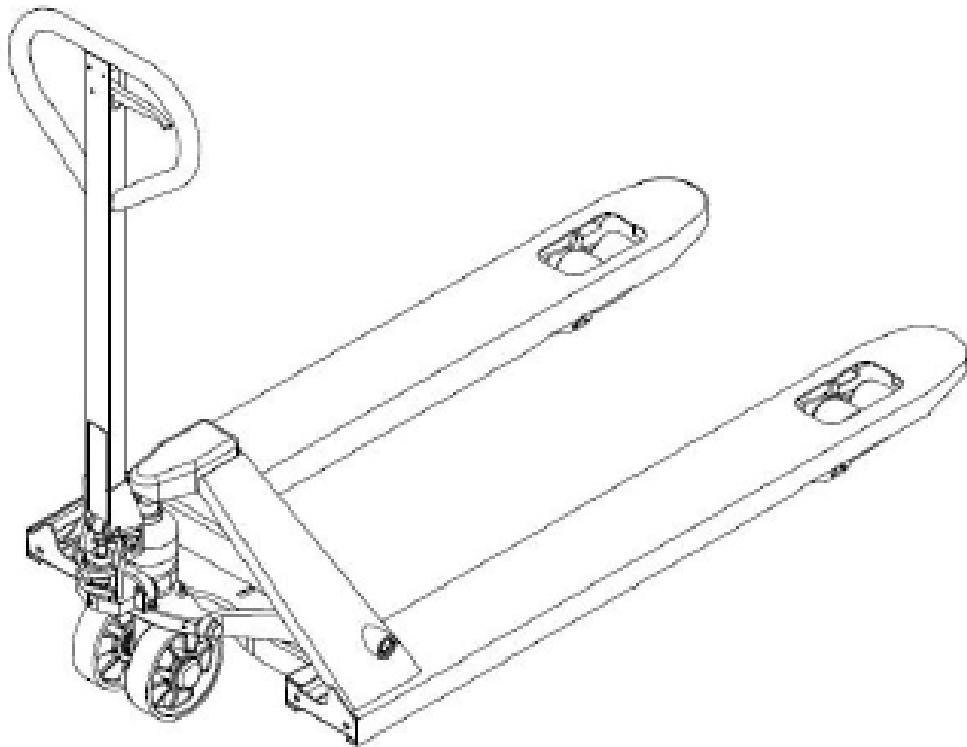


Best Value Standard Duty Pallet Jack Truck 5500 lb. Capacity

User Manual

Model no. 989032 - 21 x 48 Forks

Model no. 989031 - 27 x 48 Forks



Globalindustrial.com

Customer Service
US: 1-800-645-2986
CA: 1-888-645-2986

Main Parameter pg. 2
Applicable Range pg. 2
Assembly pg. 3
Pallet Truck lift/lower adjustment pg. 6
Controls pg. 6
Operation pg. 8

Safety precautions pg. 9
Warning pg. 10
Oil type and proper oil disposal pg. 11
Maintenance pg. 11
Maintenance Record pg. 12
Troubleshooting pg. 13



Main Parameter

Model no.	989032	989031
Capacity	5500 lbs.	
Total lift height	7.75"	
Lowered fork height	3.0"	
Tow bar height	16.6"	
Fork length	48.0"	
Fork width	21"	27"
Steering wheel dia.	6.5"	
Fork wheel dia.	3.0"	
Truck weight	135 lbs	140 lbs.
Turning radius	50 - 52.5	

Note

- The truck shall be used, serviced and repaired according to the manufacturer's requirements.
- The truck shall not be modified nor have attachments fitted without ensuring that the truck is still safe.

Applicable Range

- Hand pallet truck is a low lift transportation tool which is limited to move palletized cargo. This kind of truck possesses the feature of stable lifting, easy operation, safety and reliability usage.
- The working place must be non-slip, hard, and flat ground without holes or obstacles.
- The ambient lighting for operational use is recommended to be 50 Lux.

Assembly

1. Pull the roll pin out(23). *See figure 1*
2. Insert the handle(8) into part (A). Connect the handle(8) and pump body(31) with the roll pin(23).
3. Insert the spring pin(24) to secure the roll pin(23).
4. Connect the handle chain to the central hole of the roll pin(23). *See figure 2*
5. Attach the nut, at the end of the chain(10), to the lever plate(52). *See figure 2 and 4*
6. Pull the handle(8) and pull out the pin(B). *See figure 3*

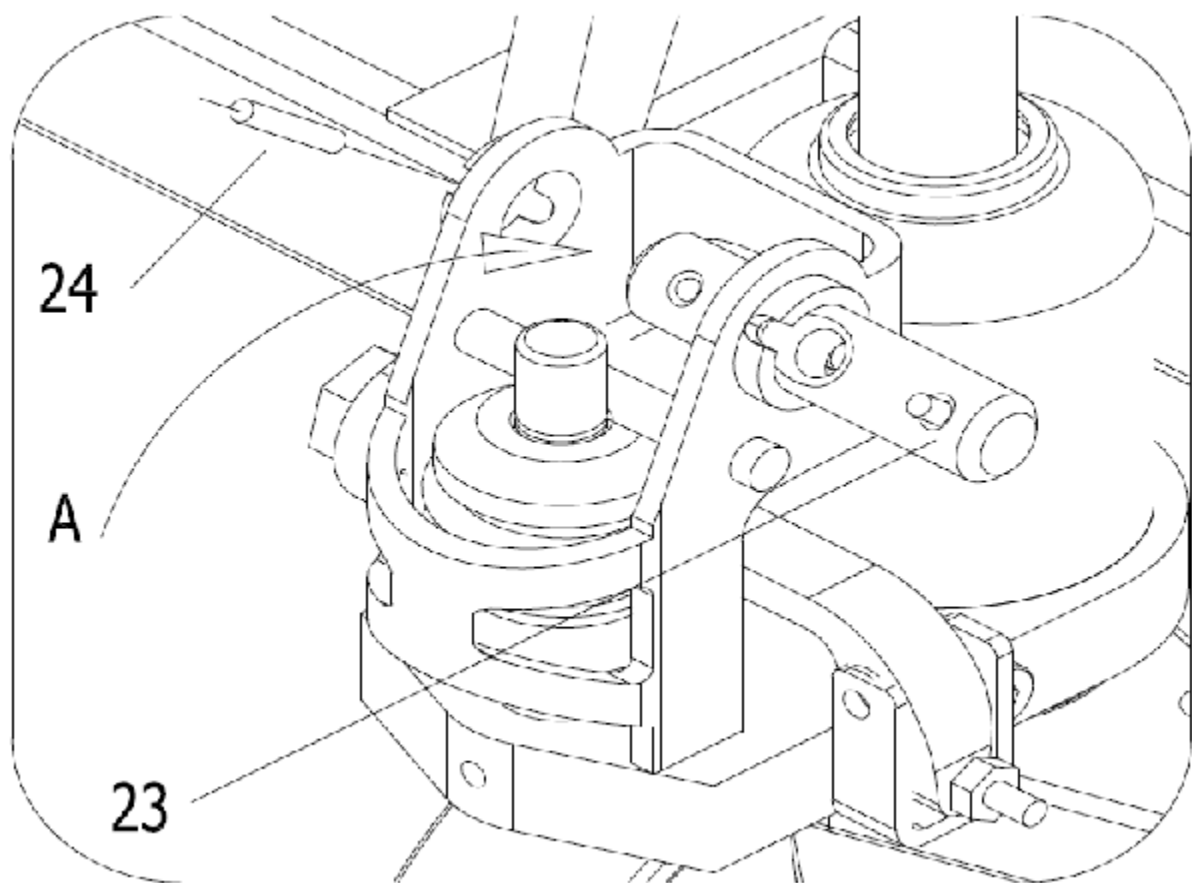


Figure 1

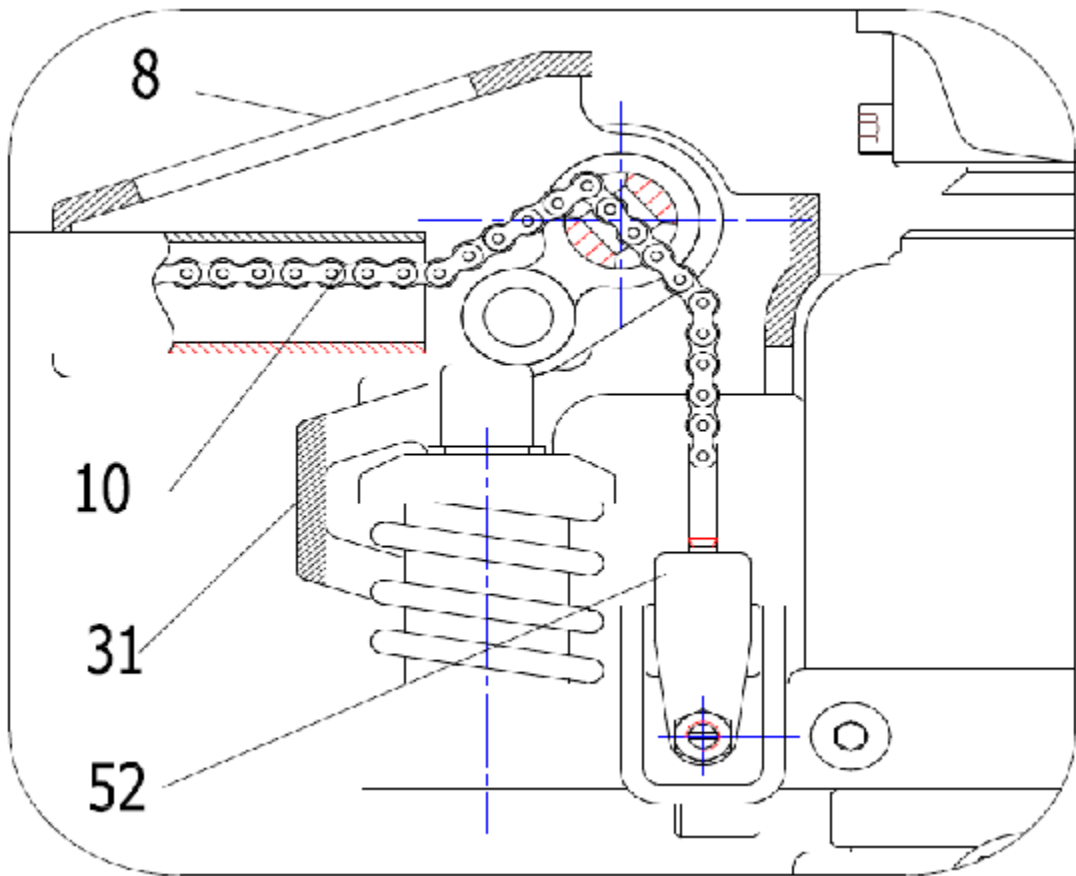


Figure 2

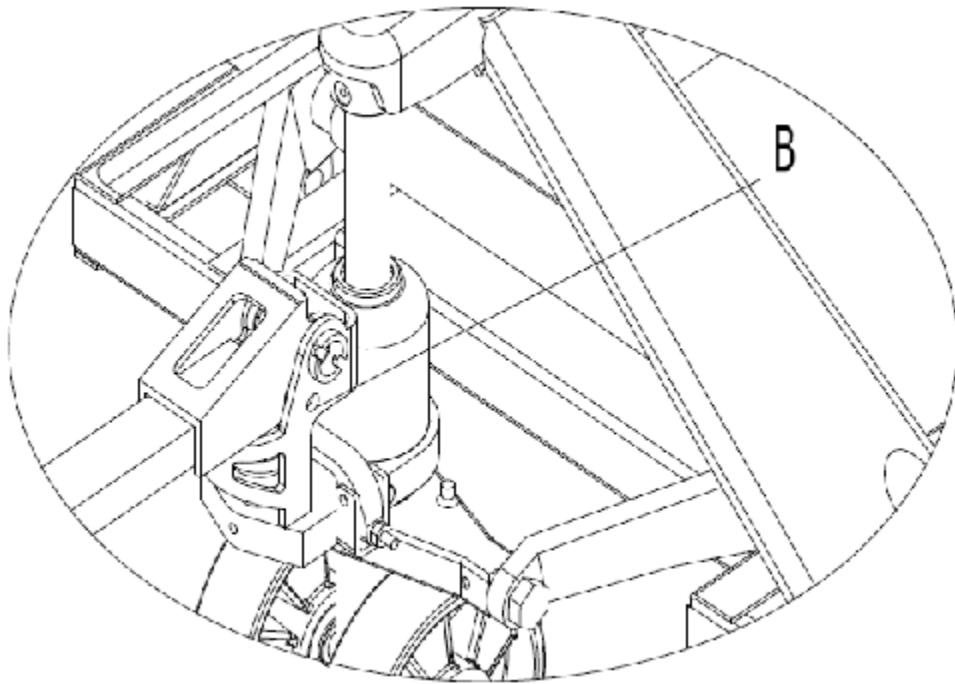


Figure 3

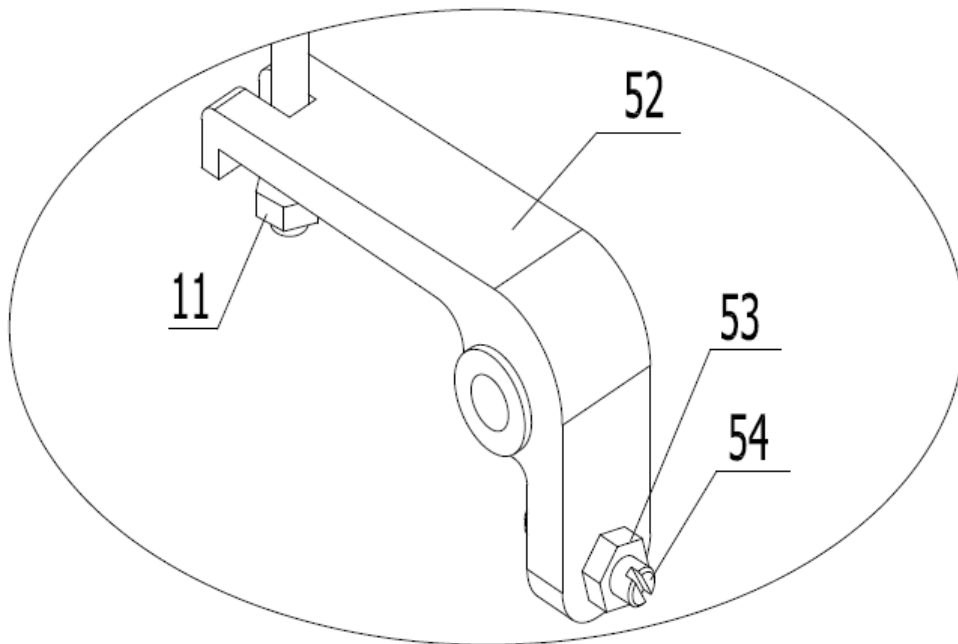


Figure 4

Pallet Truck lift/lower adjustment

1. Test the pallet jack truck controls to lift and lower a palletize cargo. *See figure 5*
2. The screw(53), shown in figure 4, is used to adjust the truck lift setting. If the truck drops the load, immediately after it is lifted, you should turn the screw counter-clockwise. Vice versa, if the truck could not return to the ground position after it's lifted, you should turn the screw clockwise. Once the proper tension adjustment is made, the pallet jack truck is ready to be used.

Controls

See figure 5

1.

LIFT: Position the trigger downward and rock the tow bar to lift the cargo.

NEUTRAL POSITION: When the trigger is in the middle position, the truck will neither lower nor lift the truck when the tow bar is rocking. The neutral position is used to move the cargo.

LOWER: Squeeze the trigger to lower the cargo to the ground.

2. Release brake

3. State of free walking

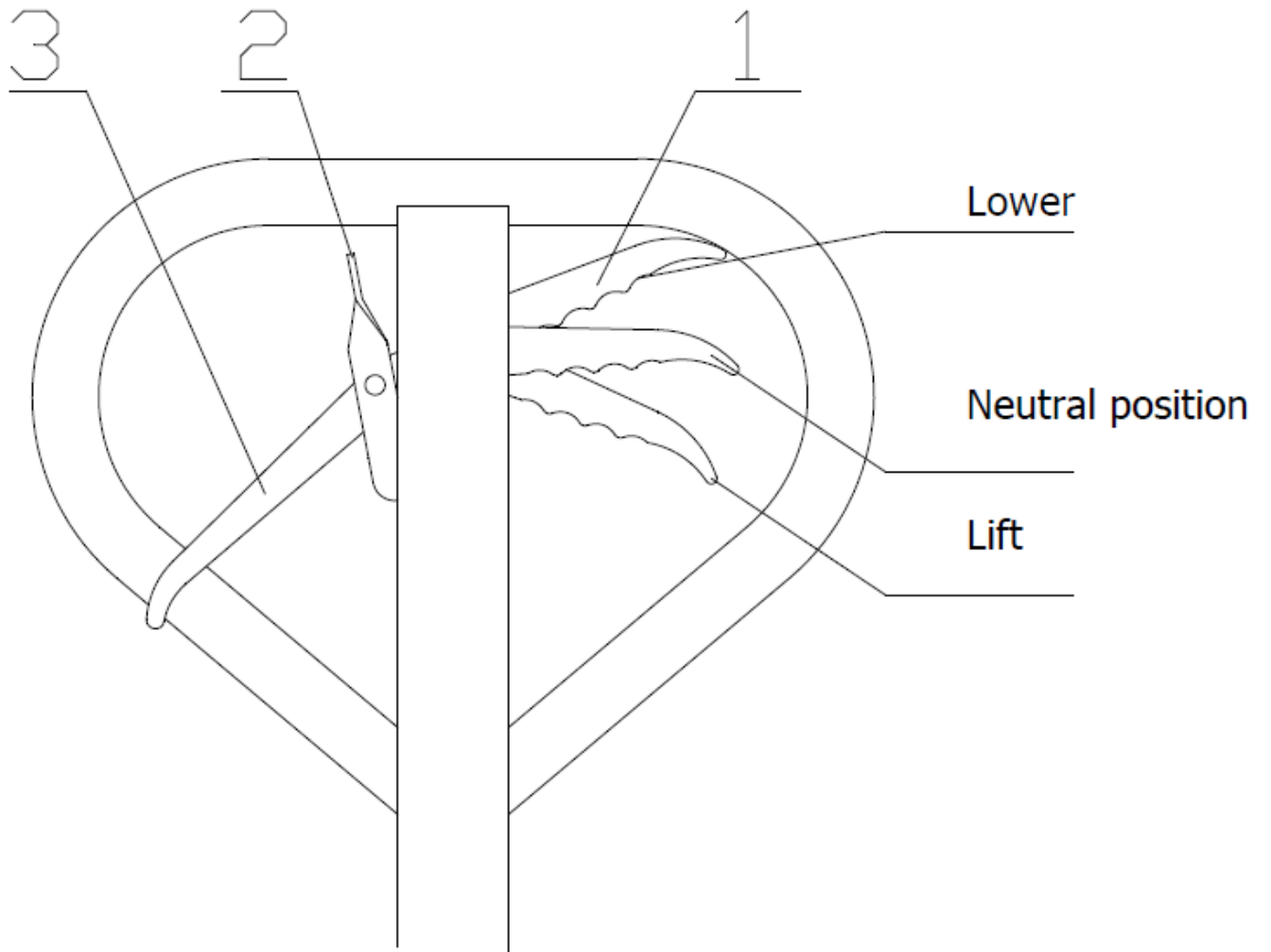


Figure 5

Operation

Before operating the pallet jack truck, make sure the cargo weight does not exceed the rated 5500 lb. load capacity. The cargo should be loaded in the middle of the truck forks. *See Figure 6*

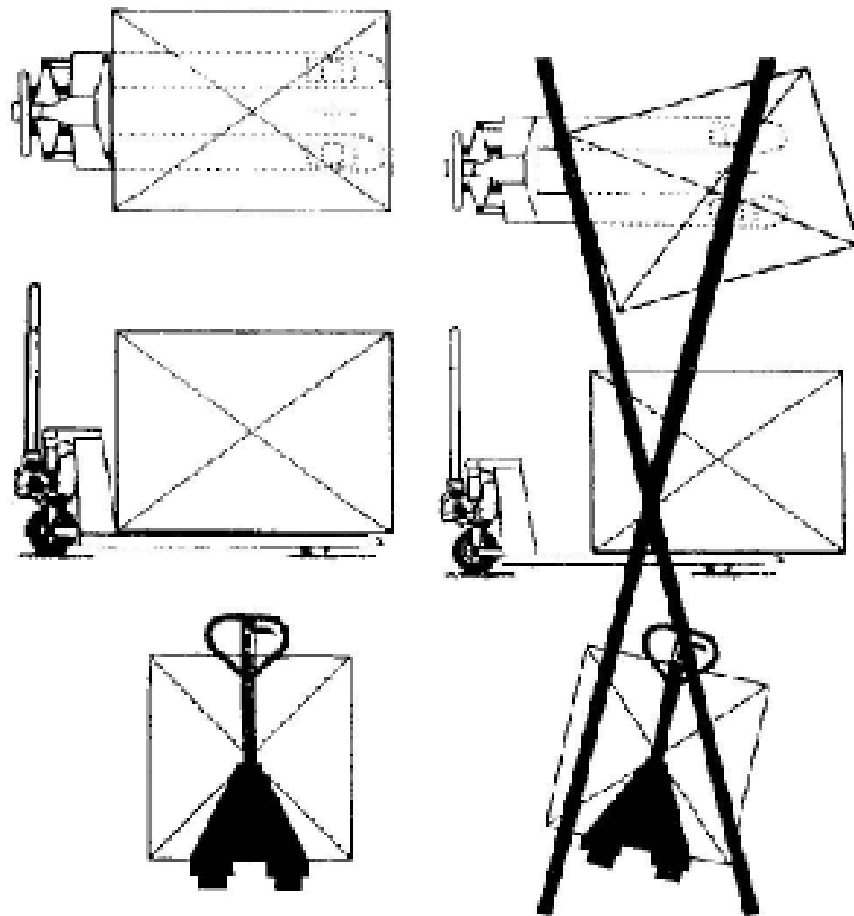


Figure 6

Safety precautions

- Untrained personnel are not allowed to use the pallet jack truck.
- The operators must put on work clothes, safety shoes, and gloves during the operation of the pallet jack truck.
- When the pallet jack truck is not in use, the handle knob should be in the brake position to make the truck stationary.
- In an emergency situation, trigger the brake handle immediately and lower the cargo to the ground safely.
- Do not park the truck on the slope or in emergency passages.
- When the pallet jack truck is used on the slope, the operator is positioned on top of the slope and pulling the pallet jack truck.
- Do not push the pallet jack truck on a slope.
- Do not stop the truck on a slope
- Do not make turns on a slope.
- When the pallet jack truck is not in use, the forks should be lowered to the ground position..
- Do not park the truck in any area that will block traffic or cause an inconvenience.
- Do not use the truck in a rainy environment.
- Do not ever sit or stand on the pallet jack truck.
- Do not transport tall cargos that can potentially tip over.
- Before the pallet jack truck is pushed into the elevator, make sure the elevator can bear the total load of pallet jack truck and cargo, as well as the total weight of all personnel in the elevator. When entering the elevator, allow the pallet jack truck to enter the elevator first.
- The pallet jack truck should be stored in dry and ventilated environment.



Warning

- Read the user manual carefully before you operate the hand pallet truck.
- Slowly squeeze the handle to lower the cargo to the ground.
- Do not rock the tow bar at a high speed or in a high frequency.
- Do not transport the cargo at a high speed.
- Do not overload the forks. Overloading could damage the pallet jack truck over time.
- The center of gravity of the cargo should be in the middle of truck forks. The offset of cargo could make a pallet jack truck off balance and possibly tip the load, if misused.
- Don't load loose or unstable goods.
- When the pallet jack truck does not work, make sure that the truck's forks are on the lowest position.
- The truck shall be used, serviced and repaired according to the manufacturer's requirements. Do not modify the hand truck with non-OEM parts.
- Do not use the pallet jack truck in areas with poor lighting.
- The fork arms should not be used as a lever to lift a load.
- Do not contact the fork arms directly with the goods or cargo.
- Do not use the hand pallet truck in a potentially explosive area.
- The operator should pay attention to their feet and any body parts to avoid any injuries in use.

Oil type and proper oil disposal

The oil tank capacity is about 250ml (or 0.25kg). According to the ISO oil criterion, the choice of oil is ISO 32 hydraulic oil between -31 °F to 104°F environment. The waste of hydraulic oil shall be disposed in terms of local laws. It is unlawful to dump oil without following proper disposal standard.

Maintenance

The routine check should be carried out daily and every abnormal phenomenon should be dealt with immediately. Please do not use a faulty truck in order to prolong the service life and safety of the user. If there are any faults, please consult a professional. It is recommended to replace any defected parts, with new parts provided by the original manufacturer. The rotary joints and motor oil should be inspected every three months. Keep all wheels clean to avoid any clogs in the wheel axle. Record all maintenance and upkeep in the maintenance record.

Troubleshooting

Issues	Causes	Recommendation
The forks can't be lifted to the maximum lift height.	Hydraulic oil is not enough.	Refill oil.
The forks can't return to the lowest position.	Too much hydraulic oil.	Take out appropriate oil.
	The rotating parts are deformed Or blocked.	Replace the part(s).
	The truck's piston and guide bushing are blocked.	
The forks can't be lowered after lifting.	The unloading mechanism is not properly functional.	See "Pallet Truck lift/lower adjustment"
	The parts are deformed or damaged.	Replace the deformed or damaged parts.
Hydraulic oil leakage.	The oil seal is missing.	Replace the oil seal.
	The surface of some parts are damaged or worn.	Replace the damaged parts.
	Loosen parts	Fasten the loosened parts.
The fork can't be lifted.	The viscosity of the oil is too high, or there is not enough oil.	Replace the oil.
	There is impurity in the oil.	Clear up the impurity and add new oil.
	The unloading mechanism in not properly functional.	See "Pallet Truck lift/lower adjustment"
When the tow bar is used, the forks drop immediately.	The valve of oil pump is clogged.	Open the valve and take out the parts. Then re-install the parts after the parts are cleaned.
The forks drop after the cargo is lifted.		



WE CAN SUPPLY THAT.®
1,000,000-PLUS PRODUCTS. INDUSTRIAL-STRENGTH SERVICE.