

MANUAL SEALLESS STEEL STRAPPING TOOL

SPECIFICATIONS

- | | | |
|---------------------|-----------|---------------------------------------|
| 1. Strap Dimension: | Widths | 13mm (1/2"), 16mm (5/8"), 19mm (3/4") |
| | Thickness | 0.38mm (.015") – 0.70mm (.027") |
| 2. Weights: | | 3.5 kg |

SAFETY INSTRUCTIONS

1. Always read operating instructions before using the tool.
2. Always wear eye, face and hand protection when operating the tool.
3. Keep hands/fingers or other parts of the body away from areas that can be pinch or cut.

MAINTENANCE INSTRUCTIONS

1. Clean this tool periodically with compressed air to remove any dust or dirt. The punch (#10), dies (#21 and #22), gripper (#8) and feedwheel (#59) must be cleaned regularly.
2. Apply light machine oil to all moving parts.
3. Check tool regularly for broken or worn parts.
4. Use the original replacement parts to ensure tool reliability.

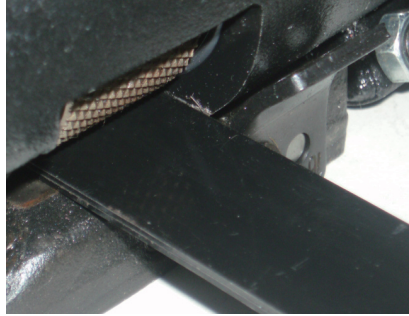
OPERATING INSTRUCTIONS

Prior to operation, make sure the front strap stop (#13), side strap stop (#91 for 16mm and 19mm, #92 for 13mm and 19mm), and rear strap stop (#36 for 16mm and 19mm, #37 for 13mm and 16mm) are equivalent to your strap width. (See ADJUSTMENTS-TO ADJSUT STRAP STOPS for installation of strap stops)

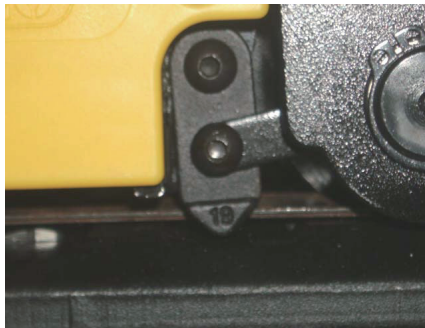
1. Feed the strapping around the package and hold in place with left hand. The end of strap is underneath.



2. Pull the feedwheel handle (#58) toward the sealing handle (#73) with your right hand. While in this position, insert the strap into the sealing section against the front strap stop (#13) so the strap seat inside the side strap stop (#91 or #92). The end of strap should protrude 1" beyond the front strap stop (#13). Release the feedwheel handle (#58) so the strap is locked and ready to be tightened.

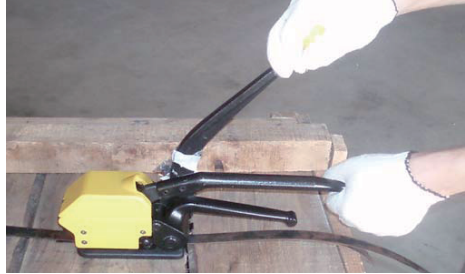


INSERT THE STRAP INTO THE SEALING SECTION AGAINST THE FRONT STRAP STOP.



STRAP MUST SEAT INSIDE THE SIDE STRAP STOP

3. Hold the sealing handle (#73) firmly with left hand. Pump the tensioning handle (#82) with your right hand until the desired tension is reached.



4. Place right hand firmly on the tensioning handle (#82) for supporting the tool. Move the sealing handle (#73) all the way forward until it hits the stop (#51). This seals and cuts the strap.



5. Move the sealing handle (#73) back to its original position. Hold the cut off strap end with the left hand. Lift the feedwheel handle (#58) toward the sealing handle (#73) to release the strap. Slide the tool away to the right.



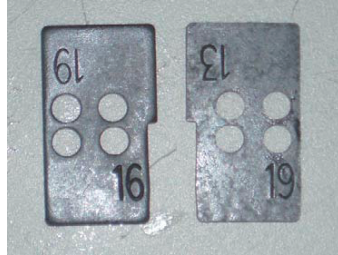
ADJUSTMENTS

TO ADJUST STRAP STOPS (All front, side and rear strap stops must set in the same number prior to use)

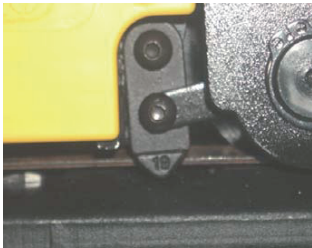
13mm (1/2")

16mm (5/8")

19mm (3/4")



Front Strap Stop (#13)



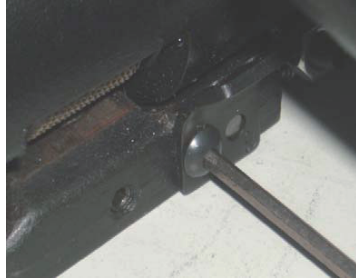
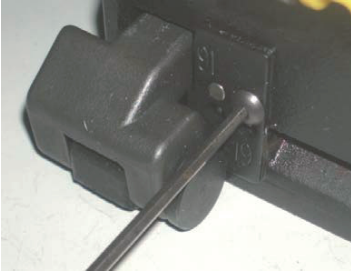
Side Strap Stop (#91 and #92)



Rear Strap Stop (#36 and #37)

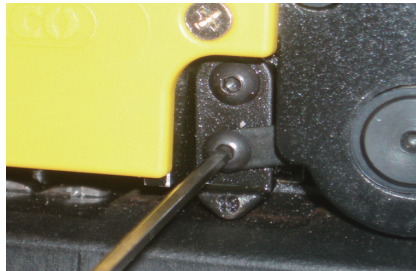
TO ADJUST FRONT AND REAR STRAP STOPS

Loosen screws (#14) in front of and behind the housing (#39). Put the size you want in place and retighten the screws (#14).



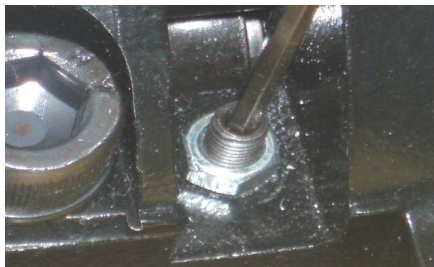
TO ADJUST SIDE STRAP STOP

Loosen screws (#94 and #96). Put the size you want in place and retighten the screws (#94 and #96).



TO ADJUST SEALING DEPTH (To avoid cutting strap too deep or fail to cut the strap)

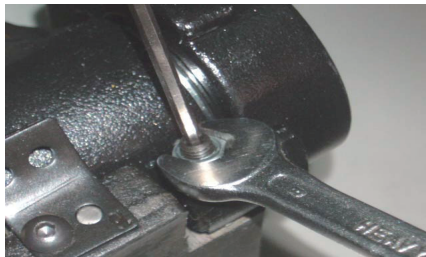
Loosen nut (#52), turn stop (#51) counterclockwise to decrease sealing depth and cutting depth, or turn clockwise to increase sealing depth and cutting depth, then retighten the stop (#51) and nut (#52).



TO ADJUST GAP BETWEEN THE FEEDWHEEL (#59) AND GRIPPER (#8) (To prevent the strap from slipping)



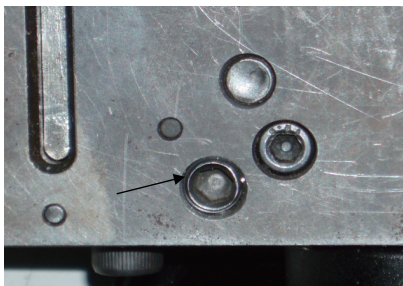
ADJUST GRIPPER



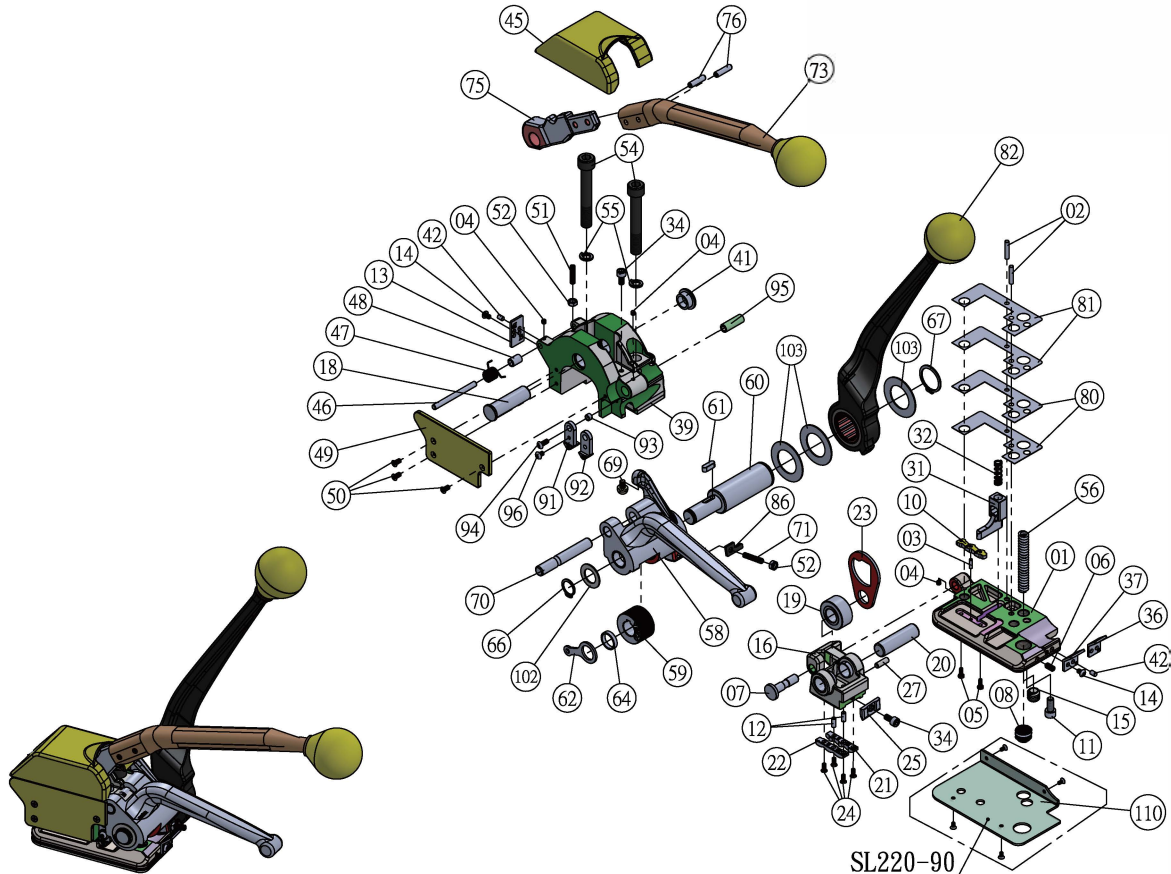
ADJUST FEEDWHEEL

TO ADJUST FEEDWHEEL HANDLE SPRING (#56) (To increase gripping performance of feedwheel #59)

Turn the socket set screw (#15) with hexagon key clockwise to increase gripping performance.



Sealless Combination Tool



SL220-90

YYSL200-01 V2 1-8

Keep tool well oiled and clean. Please order parts by number and name.

Part No.	Part Name	QTY	Part No.	Part Name	QTY	Part No	Part No	QTY
01	Base	1	31	Ejector	1	64	Washer	1
02	Pin	2	32	Pressure Spring	1	66	Rataining Ring	1
03	Pin	1	34	Screw	2	67	Rataining Ring	1
04	Socket Set Screw	3	36	Rear Strap Stop(For16 and 19mm strap)	1	69	Head Bolt	1
05	Screw	2	37	Rear Strap Stop(For13 and 16mm strap)	1	70	Parallel Pin	1
06	Socket Set Screw	1	39	Housing	1	71	Socket Set Screw	1
07	Bolt	1	41	Trunnion	1	73	Sealing Handle	1
08	Gripper	1	42	Pin	2	75	Sealing Cam	1
10	Punch	1	45	Cover	1	76	Pin	2
11	Screw	1	46	Parallel Pin	1	80	Shim(0.35mm tickness)	2
12	Socket Set Screw	2	47	Cover Spring	1	81	Shim(0.15mm tickness)	2
13	Front Strap Stop	1	48	Bushing	1	82	Tensioning Handle	1
14	Screw	2	49	Side Plate	1	86	Tensioning Handle Stop	1
15	Socket Set Screw	1	50	Screw	3	91	Side Strap Strop(For 16 and 19mm strap)	1
16	Cutter Support	1	51	Stop	1	92	Side Strap Strop(For 13 and 16mm strap)	1
18	Sealing Handle Shaft	1	52	Nut	2	93	Bushing	1
19	Roller	1	54	Bolt	2	94	Screw	1
20	Roller Pin	1	55	Washer	2	95	Pin	1
21	Die	1	56	Feedwheel Handle Spring	1	96	Screw	1
22	Die	1	58	Feedwheel Handle	1	102	Washer	1
23	Link	1	59	Feedwheel	1	103	Washer	3
24	Screw	4	60	Tension Shaft	1	110	Base Protector(SL220-90)	1
25	Cutter	1	61	Double Circle Key	1			
27	Pin	1	62	Strap Guide	1			