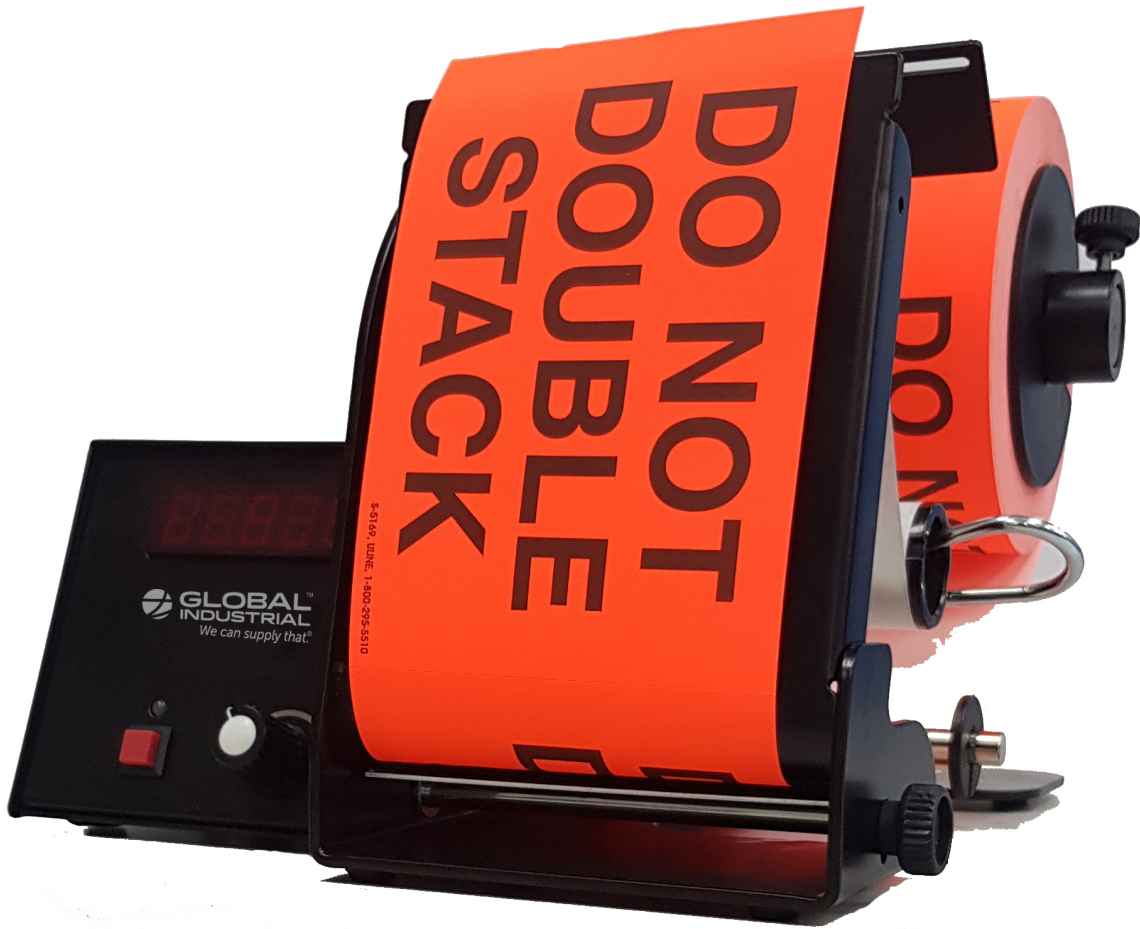




**GLOBAL<sup>TM</sup>  
INDUSTRIAL**

*We can supply that.<sup>®</sup>*

## **USER MANUAL**



## **AUTOMATIC LABEL DISPENSER MODEL NO. 244248**

## Features

Dispense butt-cut and die-cut labels.

Adjustable sensor for pinpoint accuracy.

Built in label counter.

Speed control knob.

NOTE: Not compatible with clear acetate labels

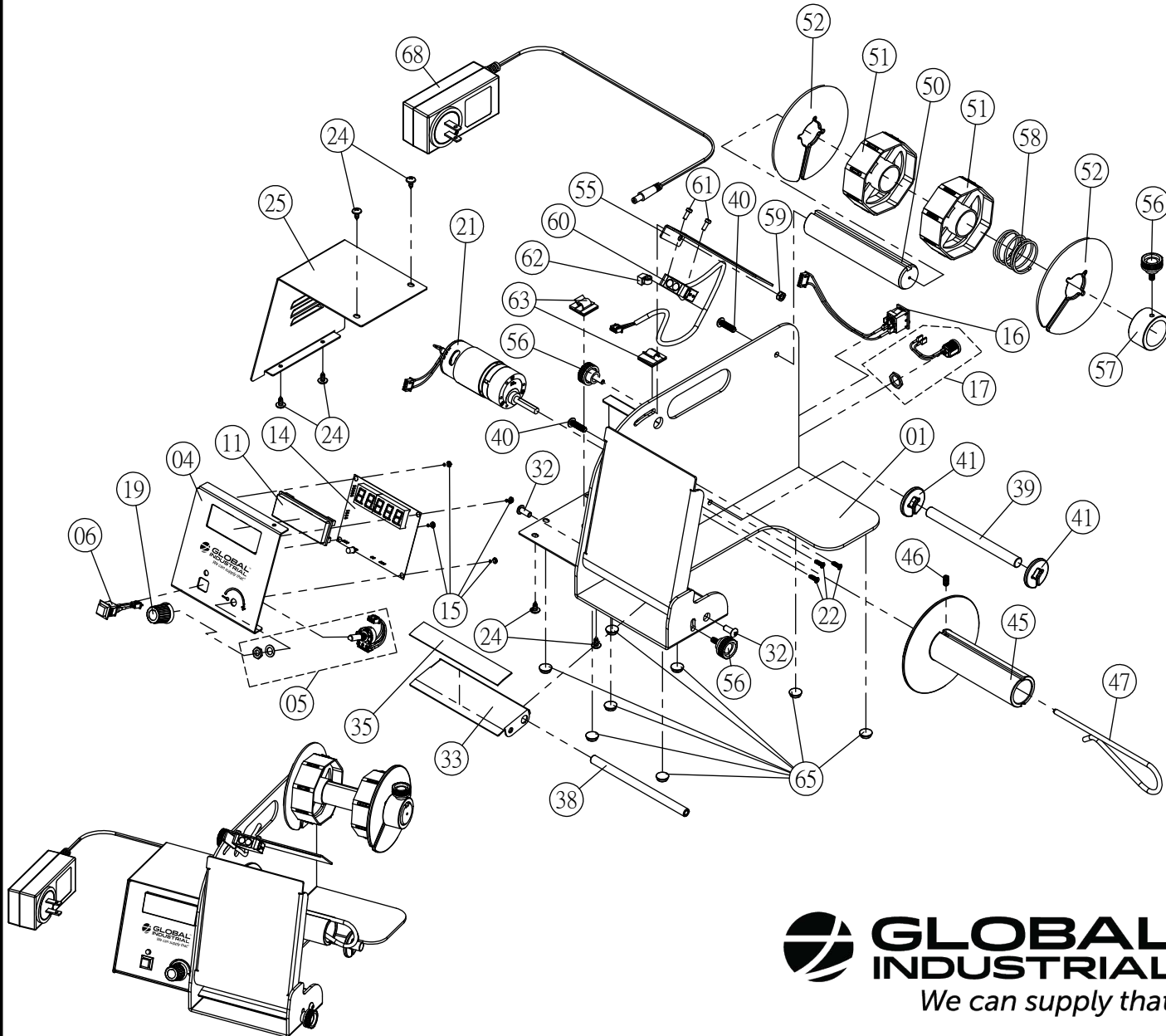
## Specifications

Model	244248
Name	Automatic Label Dispenser
Voltage	DC 12V
Power	20W
IP Protection	IP20
Speed	50~180rpm
Torgue	2kg-cm
Feed Speed	5~18m/min
Label Length	20mm~230mm
Label Width	6mm~100mm
Weight	3.8kg
L/W/H	320x270x203mm
Noise Value	LpA=61.3 dB(A), LwA=72.3 dB(A) K=3 dB(A)



Model no.244248

# Auto Label Dispenser



Part No.	Part Name	QTY
01	Main Plate	1
04	Panel Board	1
05	Variable Resistor Assembly	1
06	Power Switch	1
11	Monitor Frame	1
14	Circuit Board	1
15	Screw	4
16	On/Off Button	1
17	DC Jack	1
19	Speed Control Knob	1
21	DC Motor	1
22	Screw	3
24	Screw	6
25	Motor Cover	1
32	Screw	2
33	Compression Plate	1
35	Velcro Strap	1
38	Axis	1
39	Guiding Bar	1
40	Screw	2
41	Side Guide	2
45	Take-Up Hub Roller	1
46	Screw	1
47	Spring Clip	1
50	Spool Rod	1
51	Core Holder	2
52	Shield	2
55	Sensor Bracket	1
56	Knob	3
57	Collar	1
58	Spring	1
59	Nut	1
60	Sensor	1
61	Screw	2
62	Wire Clip	1
63	Self-Adhesive Wire Clip	2
65	Rubber Foot	8
68	AC Adapter	1

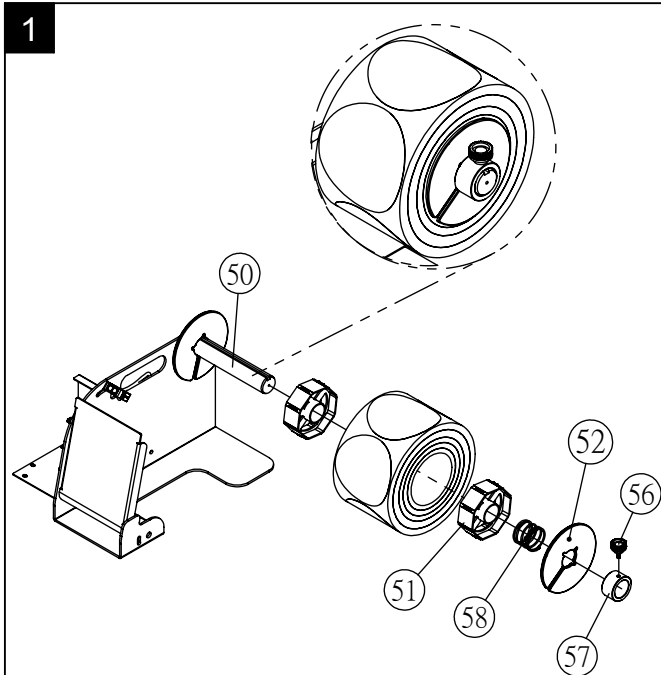
**GLOBAL**<sup>TM</sup>  
**INDUSTRIAL**  
*We can supply that.<sup>®</sup>*

Model no.244248

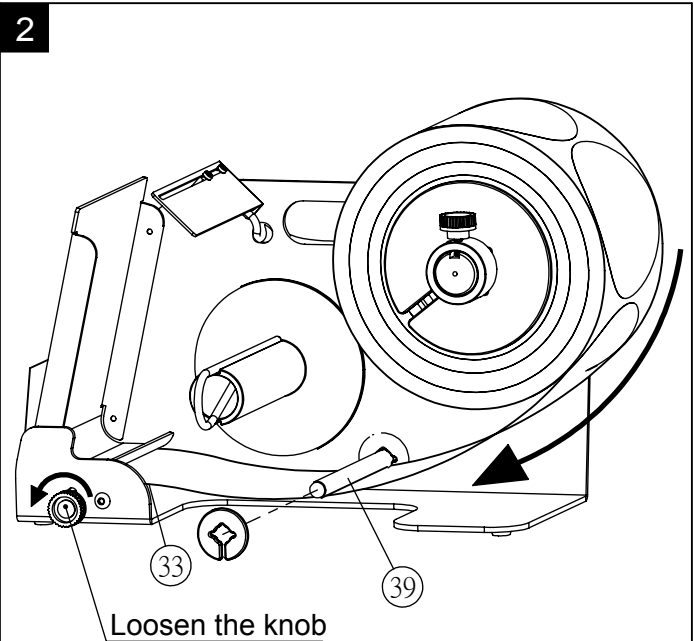
Keep tool well oiled and clean. Please order parts by number and name.

# Auto Label Dispenser

## OPERATING INSTRUCTIONS

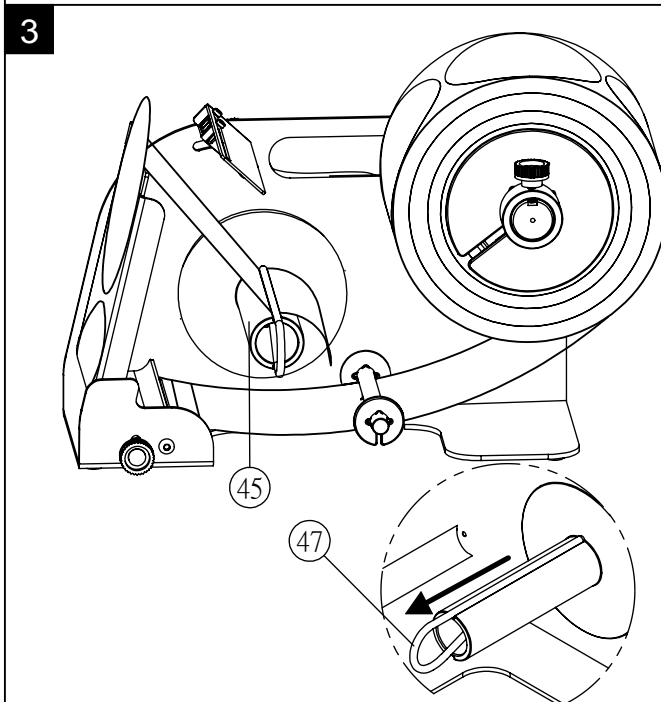


Install (51) core holders in each side of label roll. Put the label roll to the (50) spool rod. Secure the label roll with (58) spring, (52) shield, and (57) collar. Tighten collar with (56) knob.

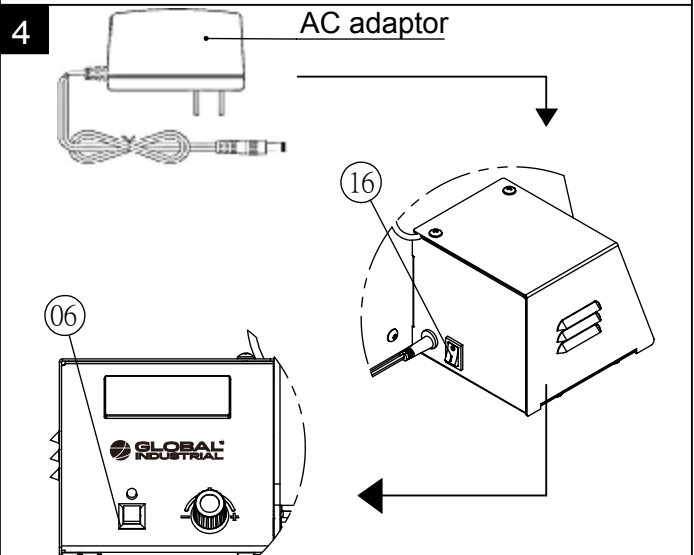


Loosen the knob

Loosen the knob in front of tool so it is easier to feed label under (39) guiding bar then between the (33) compression plate and main plate as shown.



Remove (47) spring clip. Feed label over metal plate in front of the tool. Separating the liner from the label. Coin the liner to (45) take-up hub roller. Slide (47) spring clip back on over the liner.



Plug in the AC adaptor to the tool and wall socket. Turn the power on ((16) on/off button in the back of tool) first and then press (06) power switch in front of tool. The light on top of power switch turns green.



**Type A plug adaptor is included. If you use different type of plug or socket in your location, please obtain an appropriate plug adaptor in local store.**

Model no.244248

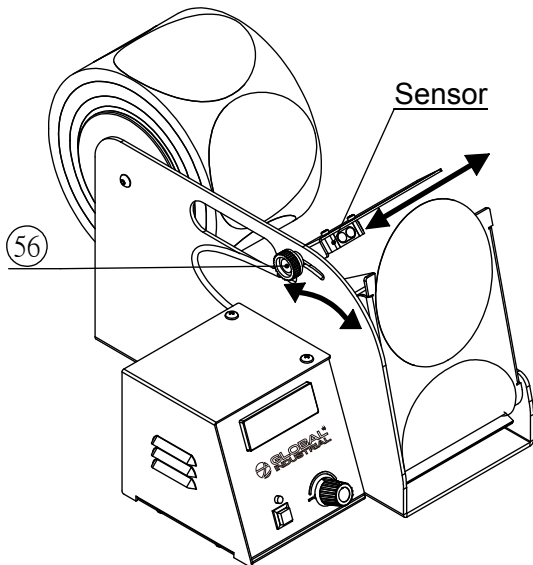
 **GLOBAL INDUSTRIAL**<sup>TM</sup>  
We can supply that.®



# Auto Label Dispenser

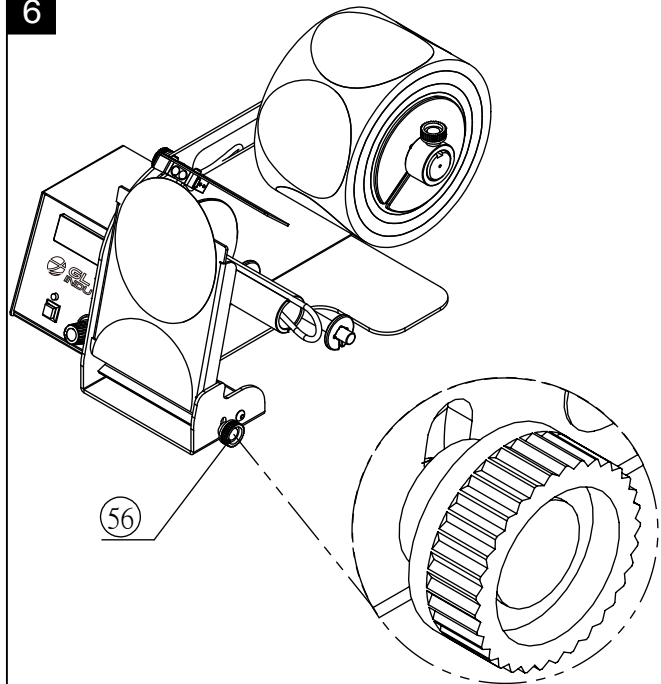
## OPERATING INSTRUCTIONS

5



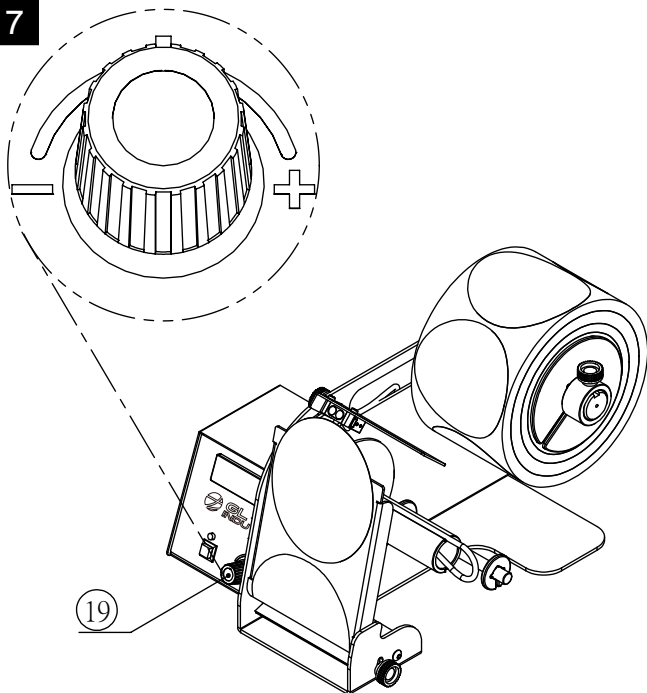
Sensor can be moved backward or forward by adjusting (56) at side. Sensor can also be moved to the left or to the right by hand. Adjust the sensor according to the width and length of label to achieve smooth operation as labels are removed.

6



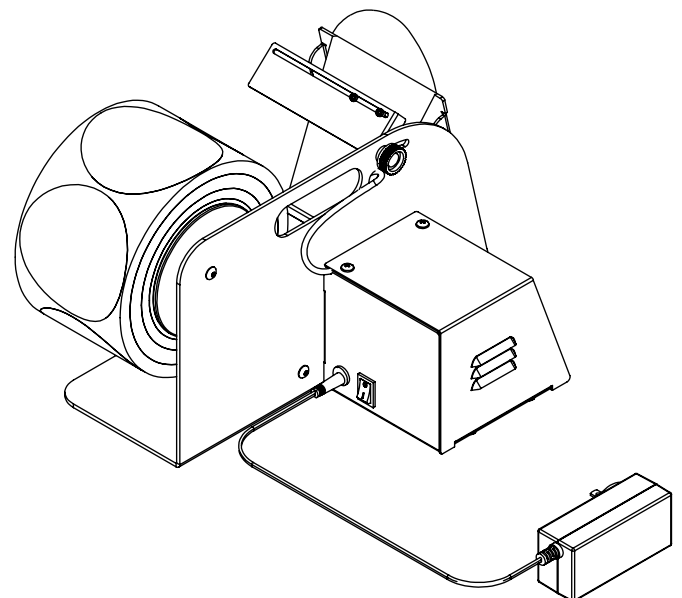
To apply proper amount of tension for proper label feeding and detection, raise (56) knob up to increase tension, then tighten the knob.

7



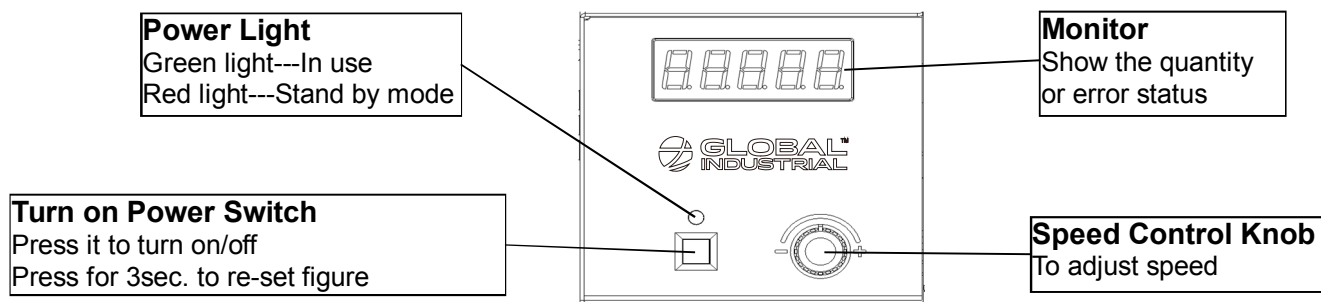
Label feeding speed can be adjusted by turning (19) speed control knob. Turn clockwise to increase speed. Turn counter-clockwise to decrease speed.

8



Always turn off the tool and remove the plug from socket when not in use.

Model no.244248



Turn on the on/off button at back of dispenser after install the label sticker. The monitor and power light turn red meaning the dispenser is ready to be used. Set up the speed and press the power switch at front, the power light turns green meaning the dispenser is in use.

## Error Status / Troubleshooting

1. "Err01" shown on monitor meaning the motor is over loading due to external causes or any other elements. The motor goes into protective mode.
2. "Err02" shown on monitor meaning the sensor does not detect the label sticker for 13 seconds and it goes into protective mode.
3. Turn on the power switch again to re-operate the tool when "Err01" or "Err02" appears. The quantity before the error appears will pop up once re-starting the power. If you want to start figure from 0, please press the power switch in front of tool for 3 seconds. If the error signal still shown, please contact service team.
4. Turn off the on/off button at back of tool to stop the machine if urgency happened.

## Photoelectric Sensor

