

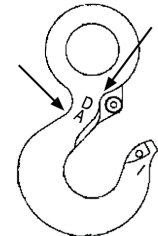
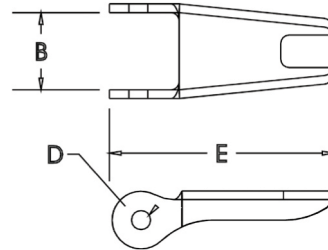
S-4320 Latch Kit

S-4320 Replacement Latch Kit for 319N, 320N, 322N, 339N and NEW 1327 and 1339 Hooks.

- Heavy duty stamped latch interlocks with the hook tip.
- High cycle, long life spring.
- Can be made into a "Positive Locking" Hook when proper cotter pin is utilized.
- Latch kits shipped unassembled and individually packaged with instructions.

IMPORTANT: *The new S-4320 Latch Kit will not fit the old style 319, 320 and 322 hooks.*

the **Crosby** group[®]



Example of Hook ID placement location

Hook Size (t)			Hook ID Code	Stock No.		Weight Each (lbs.)	Dimensions (in.)		
Carbon	Alloy	Bronze		S-4320	SS-4321 *		B	D	E
3/4	1	.5	D	1096325	1097100	.03	.50	.15	1.44
1	1-1/2	.6	F	1096374	1097109	.04	.54	.17	1.56
1-1/2	2	1	G	1096421	1097118	.04	.63	.17	1.66
2	3	1.4	H	1096468	1097127	.06	.66	.17	1.91
3	5	2	I	1096515	1097136	.10	.83	.20	2.31
5	7	3.5	J	1096562	1097145	.15	1.04	.20	2.88
7-1/2	11	5	K	1096609	1097154	.28	1.25	.27	3.56
10	15	6.5	L	1096657	1097163	.33	1.35	.27	3.81
15	22	10	M	1096704	1097172	.84	1.66	.39	5.16

* SS-4320 is Stainless Steel construction with cad plated steel nuts.