

User's manual	Manual del usuario	Manuel de l'utilisateur
Customer Service US: 1-800-645-2986	Servicio de atención al Cliente US: 1-800-645-2986	Service à la clientèle Canada: 888-645-2986

# Global Industrial Rubber Speed Hump with Mounting Kit, 23.5" W x 110" L

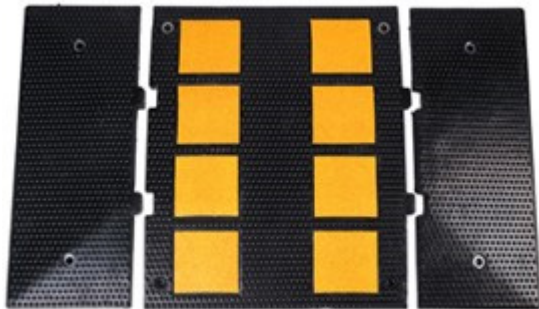
Models: 670774

Slows vehicles 5- 10 MPH  
Recommended for concrete and asphalt surfaces

## What You Need:

High-speed hammer drill with a 3/4" masonry bit  
Mounting screw and expansion screw sleeve (included)  
Nailing hammer

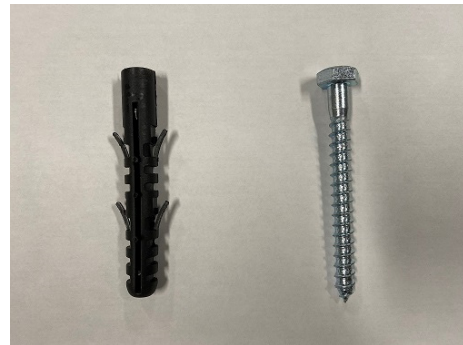
670779 Global Industrial Rubber Speed Hump, Middle Section is available for additional purchase to lengthen



1

2

3



4

5

## Package Contents:

1. Male End Cap (1pcs)
2. Middle Section(5pcs)
3. Female End Cap(1pcs)
4. Plastic Expansion Screw Sleeve
5. Mounting Screw

# Rubber Speed Hump

## Assembly Instructions

1. Place Speed hump in designated area. Mark mounting hole placement. Remove speed hump and pre-drill holes to install plastic screw sleeve to the ground.



2. Align rubber endcaps and middle section on top of plastic screw sleeve. Install the mounting screws into the plastic screw sleeves using a hammer.



**Warning:** Excessive tightening may damage the hump

