

TROUBLESHOOTING

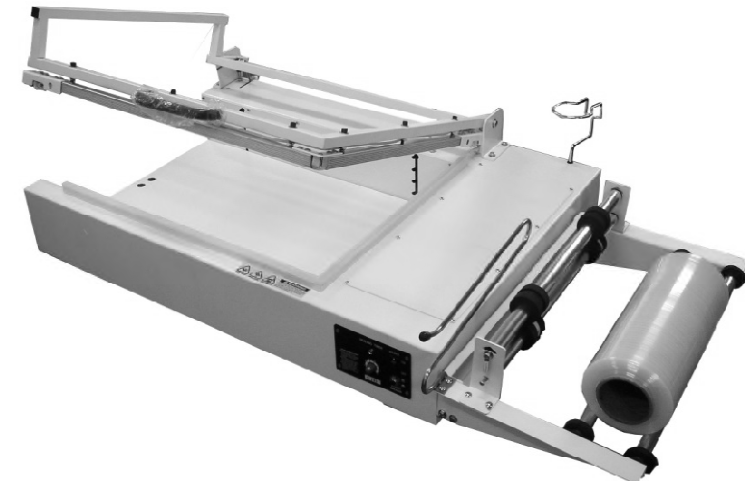
MALFUNCTIONS	REASONS	SUGGESTIONS
No sealing Power lamp is off	Disconnected plug Power cord is broken Transformer is broken	Check or change the plug Replace or repair the cord Replace the transformer
No sealing Power lamp is on Sealing lamp is on	Heater (heating element) is broken Spring hook our mounting spring is loose or in poor contact Terminals of the heating element are in poor contact	Replace the heater Clean or tighten spring hook connection Clean the terminals and adjust if needed
No sealing Power lamp is on Sealing lamp is off	Microswitch is activated Defective microswitch	Adjust the microswitch lever Adjust the microswitch position Replace the microswitch
Teflon cloth burn	Timer malfunction Prolonged heating time	Replace timer or relay Decrease the timer setting
Heating wire breaks	Worn Teflon adhesive	Replace the Teflon adhesive
Seal is wrinkled	Heating timer is set too high Cooling time is not enough	Lower the timer setting Continue pressing the upper lever for 1-2 seconds after the light goes off
Imperfect seal	Worn Teflon cloth Worn silicone rubber	Replace Teflon cloth Replace silicone rubber
Broken seal	Prolonged sealing time	Decrease timer setting
Non-full-weld seal	Sealing time is too short	Increase sealing time
Seal sticking	Dirty Teflon cloth Dirty sealing bar	Clean the Teflon cover Clean the silicone rubber sealing bar

L- BAR IMPULSE SEALER

OPERATING INSTRUCTIONS

MODEL

W-350L, W-500L, W-650L



SPECIFICATIONS

Model	W-350L	W-500L	W-650L
Power	110V/1000W	110V/1900W	110V/2800W
Sealing Length	14" x 20"	20" x 26"	26" x 31"
Seal Type	Round	Round	Round
Weight (lbs)	80, 18	98, 21	116, 22

OPERATING INSTRUCTIONS

Before operating, check the heating element, Teflon cover, Teflon adhesive and sealing pad (silicone rubber).

1. Set the Power Switch to the **ON** position.
2. Adjust the timer setting according to the thickness of the sealing material. **Note: Always start with the lowest setting and gradually increase to the correct setting.**
3. Pull the film to be sealed in between the base and sealing jaw.
4. Place the object to be sealed between the sheets of film.
5. Press the sealing bar down and seal.
6. Wait 2-3 seconds to allow the seal to set and lift the handle.
7. Seal the opening of the film.
8. Use the heat gun to shrink the film evenly.

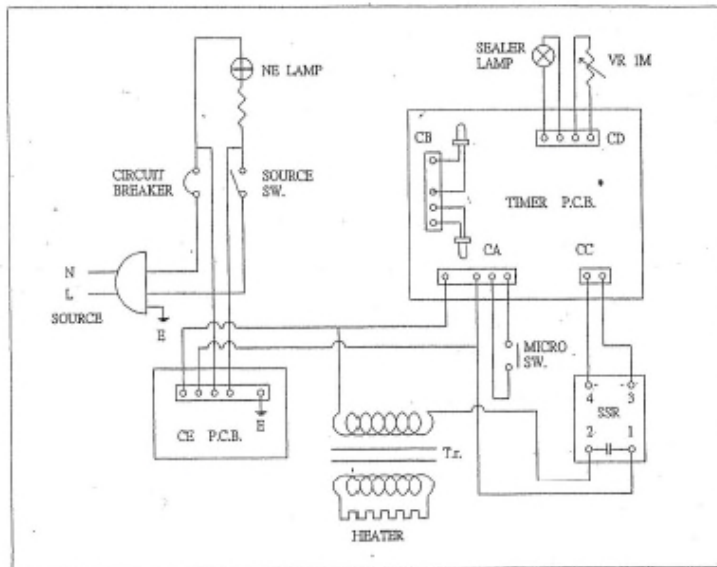
IMPORTANT POINTS TO REMEMBER

- **Read** all instructions before use. Save these instructions for later use.
- **Follow** all warnings and instructions marked on the product.
- **Unplug** this product from the power source before cleaning and/or changing any parts
- Do not rest anything on the power cord. Do not place the machine where the power cord may be stepped on or pulled.
- Always **keep out** of reach of **children** and pets.
- This sealer should only be in use with an **operator** in attendance.
- **Never insert** clothing, hands, fingers between the sealing jaws of sealers.
- **Never touch** the heating elements with bare hands while the sealer is plugged into a power source, or in operation, or just finished operation. It will be **HOT**.
- Be sure to **check** for **worn parts** before starting operation.
- Do not operate with a **damaged power cord** or plug.
- Always keep the unit **clean**. Do not use water. Silicone spray may be used to clean the unit. Be sure the unit is unplugged from the power source before cleaning.
- When changing **blade** (for sealers with cutters), be **careful** of the sharp edge.
- When changing the teflon adhesive, be sure the entire surface under the **heating element** is covered with a teflon adhesive. Bend down the excess teflon adhesive on both ends. This prevents the heating element from breaking and the machine from **grounding**.
- When replacing the **fuse**, be sure the exact voltage and ampere is used.
- Be sure to keep a record of your model number. Specify this number when ordering parts.
- When replacing any parts, be sure to **mark down** the exact locations of the connections.

ADDITIONAL INFORMATION

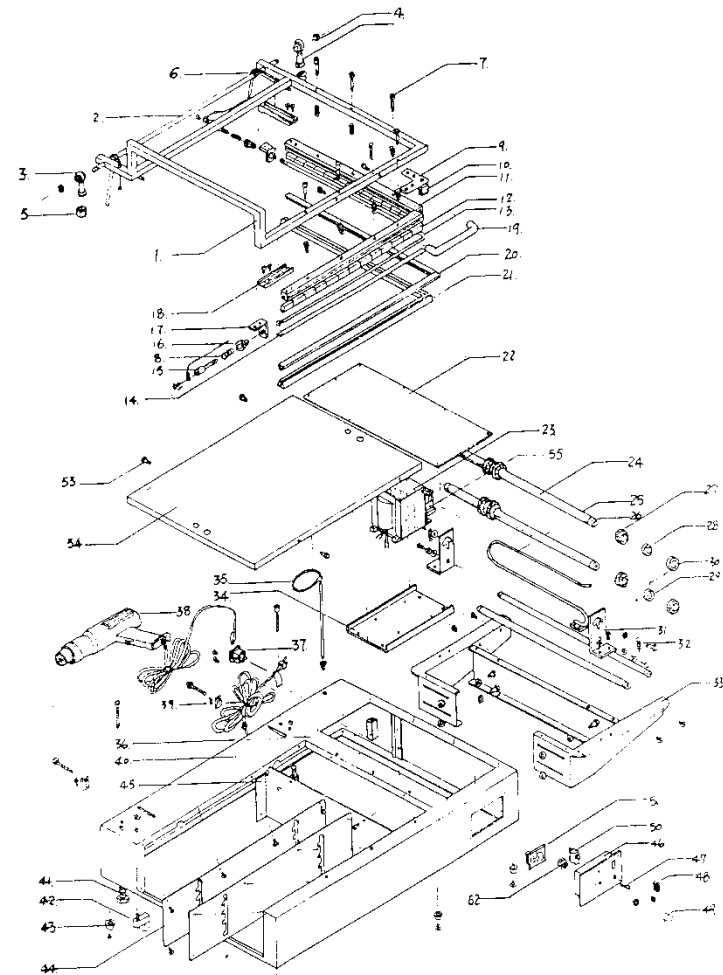
- Always unplug the unit from the power source before attempting any maintenance.
- Always keep the sealing platform clean and remove any residue found on the platform and Teflon tape. Silicone spray may be used for this purpose.
- When replacing the Heating Element, always check the condition of the Teflon Tape.
- Occasionally check the condition of the Silicone Rubber for wear and burn. A damaged or worn Silicone Rubber will affect the quality of the seal.

CONNECTION DIAGRAM



PARTS DIAGRAM

Contact your distributor for spare parts diagram.



W-300L 14" x 20" L-Bar Sealer
 W-500L 20" x 26" L-Bar Sealer
 W-600L 26" x 31" L-Bar Sealer