



W·SERIES

Long Hand Sealer

Models: WN-500H/HC, WN-650H/HC, WN-750H/HC, WN-900H/HC,
WN-1000H/HC, WN-1300H, WN-1500H/HC

Distributed By:

Copyright © 2015 by Stephanie Hwang

All rights reserved. No part of this publication may be reproduced, distributed, or transmitted in any form or by any means, including photocopying, recording, or other electronic or mechanical methods, without the prior written permission of the publisher, except in the case of brief quotations embodied in critical reviews and certain other noncommercial uses permitted by copyright law. For permission requests, write to the publisher, addressed "Attention: Permissions Coordinator," at the address below.

Sealer Sales, Inc.
8820 Baird Avenue
Northridge, Ca 91324
www.sealersales.com

Printed in the United States of America

General Information

Thank you for purchasing our W-Series Long Hand Sealers.

This owner's manual contains information relating to your sealer. The manual will provide you with basic information concerning both operation and maintenance of your new machine. Please read it carefully as failure to do so may result in bodily injury and/or damage to the equipment.

Please fill in the information below. You will find the information on the machine identification plate. You will need this information when ordering replacement parts or making technical inquiries.

No part of this manual may be duplicated, reproduced, stored in a retrieval system, translated, transcribed, or transmitted in any form without the express prior written permission of Sealer Sales.

WHLH EQUIPMENT INFORMATION

❖ Model #

❖ Serial #

❖ Purchase Date:

❖ Reference # (found on packing slip)

❖ Owner:

Safety Instructions



WARNING! Below are general safety precautions and warnings that should be understood prior to setting up or operating your equipment. Read and fully understand all instructions and warnings prior to using this unit. Your safety is most important! Failure to comply with procedures may result in serious injury or property damage. Remember: **Your personal safety is your responsibility.**

Unsafe practices or unauthorized modifications could result in accidents or property damage. Failure to follow these safety rules and take necessary precautions can result in serious injury as well as damage to equipment. Failure to comply with the safety instructions would also void the warranty.

- ❖ Never operate or service your sealer until you have read this manual completely and understand it fully.
- ❖ Only plug the sealer into a standard 120 Volt, 60Hz wall outlet or surge protector.
- ❖ Do not use the sealer if the power cord, plug or any other parts are damaged. Do not allow the power cord to drape into your work area. Check that all parts are operating properly and perform the intended functions. Check for any worn parts before starting operation. Check for all other conditions that may affect the operation of your sealer.
- ❖ Reduce risk of unintentional starting. Make sure the power switch is in the "OFF" position before attaching to the power source.
- ❖ Always disconnect sealer from power source before servicing, changing accessories or cleaning the unit.
- ❖ To provide protection against the risk of electrical shock, the power connection must be properly grounded at all times.
- ❖ Do not leave the sealer unattended when in use. Disconnect the sealer from the power source before leaving the work area.
- ❖ Do not use the machine for any other purpose other than to seal thermoplastic materials. Doing so may result in damage to the machine and injury to the operator.
- ❖ While operating machinery, wear close-fitting clothing and tie back long hair to prevent any external items from getting caught in the machine. Do not wear jewelry when operating the sealer.



- ❖ Never touch the heating elements with hand while the sealer is plugged into a power source, in operation or just finished operation. Touching heated areas may cause fire and/or severe burns.



- ❖ The blade found on the Long Hand Sealer w/ Cutter is very sharp. Use extreme caution when handling or changing the blade.
- ❖ While machine is in operation, do not place fingers, tools, or other foreign objects on or into the machine. Do not place hands or fingers near pinch points. Do not touch machine while it is in operation. Perform all procedures carefully and watch where hands and fingers are at all times.
- ❖ The sealer is not water resistant or water proof. Spraying down the machine will damage machine or cause electrical shock. Do not submerge the sealer into water or liquid.
- ❖ Do not operate sealer in a corrosive or humid environment.
- ❖ Always keep the machine clean and in good working condition. Follow any maintenance procedures outlined in this manual. Make sure unit is disconnected from power source before cleaning.
- ❖ NEVER use any accessories or parts from other manufacturers. Machine should not be altered or modified using parts that are not genuine authorized parts. Doing so will VOID YOUR WARRANTY.
- ❖ *When replacing the heating elements, always replace the PTFE adhesive under the heating element. A worn PTFE adhesive can cause the heating element to break.* The PTFE adhesive works as a barrier between the body of the sealer and the element. Never allow the element to come in direct contact with the sealer body as that will damage the timer.
- ❖ Never leave the sealer unattended. Be safe, disconnect the sealer from power source before leaving work area.
- ❖ Always keep out of reach of children and pets.
- ❖ Close supervision is necessary when any appliance is near persons with reduced physical, sensory or mental capabilities or lack of experience and knowledge . This sealer is NOT to be used by children or by persons with reduced physical, sensory or mental capabilities or lack of experience and knowledge.
- ❖ Do NOT use the sealer outdoors.
- ❖ Do NOT use the sealer while under the influence of drugs, medications or alcohol.

SAVE THESE INSTRUCTIONS - REFER TO THEM OFTEN AND USE THEM TO INSTRUCT OTHERS.

Introduction

W-Series Long Hand sealers are designed for sealing longer materials for specialized sealing needs. Our W-Series Long Hand sealers w/ cutters are accompanied with a sliding cutter ideal for sealing or making bags from poly tubing. The sealers can seal polyethylene, polypropylene, saran, nylon, static shielding bags, and Mylar up to 10mil in total thickness.

Features of the W-Series Long Hand Sealers

Your Long Hand sealer is equipped with a wide range of standard features and capabilities.

- ❖ Impulse sealing - no warm up time needed
- ❖ Electronic timer for variable control
- ❖ Heavy duty all metal construction
- ❖ Table top design supported with anti-slip rubber feet
- ❖ Seal width: 2.7mm wide flat heating element
- ❖ Option: Round heating elements available for seal and cut applications
- ❖ Manufacturer spare parts kit includes: 3 heating elements and blade (cutter version only)

How Do W-Series Long Hand Sealers Work?

Basic

Principles

Place material on lower jaw and bring sealing arm to activate sealing process

Our W-Series impulse sealers fire a short burst of electricity through a specially designed heating wire to weld thermoplastic materials together. The length of the seal time will depend on the sealing characteristics of the bag being sealed. The sealing process is simple: The operator places material on the base of the sealer and brings the sealing arm down to seal.

Specifications

	WN-500H WN-500HC	WN-650H WN-650HC	WN-750H WN-750HC	WN-1000H WN-1000HC	WN-1300H	WN-1500H WN-1500HC
Power	110V/60Hz or 220V/50Hz	110V/60Hz or 220V/50Hz	110V/60Hz	110V/60Hz	110V/60Hz	110V/60Hz
Watts	600W	800W	1000W	1400W	2000W	2500W
Seal Width	2.7mm	2.7mm	2.7mm	2.7mm	2.7mm	2.7mm
Sealing Length	19 3/4"	25 3/4"	29 3/4"	39 3/4"	51 3/16"	59"
Cutting Length	18 3/4"	24 3/4"	28 3/4"	38 3/4"	N/A	58"
Dimensions	28" x 5" x 10"	34" x 5" x 10"	38" x 5" x 10"	48" x 5" x 10"	63" x 5" x 13"	75" x 5" x 14"
Shipping Dimensions	33" x 10" x 15"	39" x 10" x 15"	42" x 10" x 15"	53" x 10" x 16"	64" x 11" x 14"	82" x 16" x 15"
Net Weight	21lbs	26lbs	27lbs	33lbs	40lbs	79lbs
Gross Weight	36lbs	30lbs	32lbs	40lbs	42lbs	93lbs

Getting to Know your Long Hand Sealer

W-Series Long Hand Sealers are simple and efficient sealing machines.

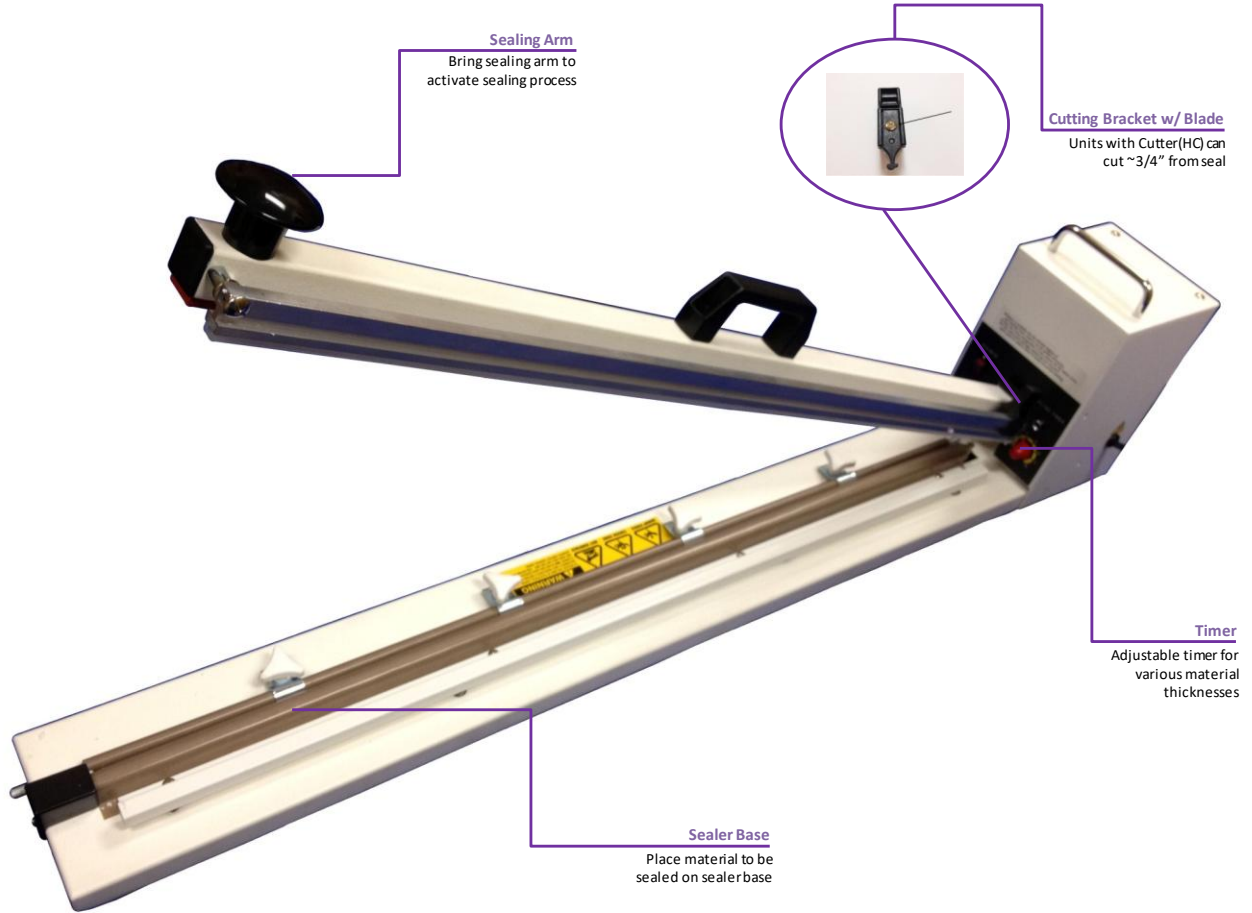


Figure 1. W-Series Long Hand Sealer Overview



Figure 2. WN-1500H Sealer Overview

Electrical Circuit Diagram

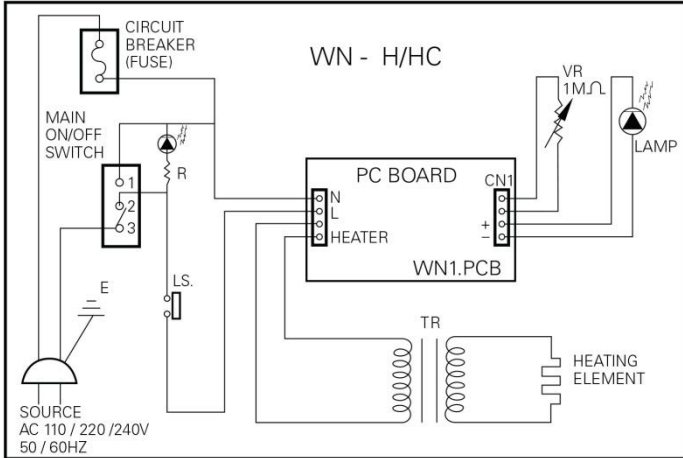


Figure 3. Electrical Circuit Diagram for W-Series Long Hand Sealers

Operating your Sealer

Assembly Instructions

Sealer comes assembled and ready to operate.

Operation



1. Before operating, check the heating element, PTFE cover, PTFE adhesive and the silicone rubber. The heating element should be intact.
2. Insert the power cord into the correct receptacle (110V).
3. Turn the power switch on.
4. Set the timer knob to the lowest setting. Always start with a low setting and increase gradually as needed.
5. Place material to be sealed on the base of the sealer and bring the sealing arm down firmly, but gently. The red light will turn off when sealing time is complete.
6. ***When red light turns off, keep pressing the sealing arm down for an additional 2-3 seconds. For a high quality seal, seals must cool under pressure. We usually recommend a congeal setting of at least 2x that of the heat setting but every bag will have variations. Thicker materials will require a longer cool (congealing) time.***
7. For units with a sliding cutter, slide the cutting bracket across poly material to cut material above the seal.

Tips for Successful Sealing

1. If the seal is broken or damaged, decrease the sealing time.
2. If the seal is not fully welded, increase the sealing time.
3. If the sealing material sticks to the sealing pad, decrease the congealing time.
4. If the width of the seal is not perfect or does not match the size of the element, increase the congealing time. ***When sealing/timer light turns off, keep pressing the sealing arm down for an additional 2-3 seconds. For a high quality seal, seals must cool under pressure. We usually recommend a congeal setting of at least 2x that of the heat setting but every bag will have variations. Thicker materials will require a longer cool (congealing) time.***
5. Always keep the sealer clean. Remove any residue found on the platform and PTFE cover. Silicone spray may be used for this purpose.



6. *When replacing the heating elements, always replace the PTFE adhesive under the heating element. A worn PTFE adhesive can cause the heating element to break prematurely.* The PTFE adhesive works as a barrier between the body of the sealer and the element. Never allow the element to come in direct contact with the sealer body as that will damage the timer.
7. Occasionally check the condition of the silicone sponge/compression foam for wear or burns. A damaged silicone rubber will affect the quality of the seal.



8. Be sure to turn off the power or unplug the unit before replacing any parts.

Maintenance

The following maintenance procedures should be followed to ensure the longevity of your W-Series Long Hand sealer.

Inspection and Cleaning

1. Inspect your machine daily.
2. Use a clean cloth to remove any plastic residue remaining on the top PTFE cloth.
3. When replacing the elements, always check the condition of the bottom PTFE adhesive.
4. Check the condition of the silicone rubber for wear and burns. A damaged silicone rubber will affect the quality of the seal.

Replacement Kit Instructions

Our W-Series Long Hand sealers will require new heating elements and PTFE from time to time. Heating elements will break through wear and tear. A good rule of thumb is to replace the bottom PTFE adhesive every time you change your heating element. The top PTFE adhesive prevents the plastic or other thermoplastic material you are sealing from sticking to the heating element.

Replacement kits are available from your distributor. Kits include (2) heating elements, (2) PTFE adhesives, 1ft long roll of PTFE cover, and (1) blade for cutter units. Optional round wires are available for seal and cut applications (shrink wrapping, etc).

For replacement kit part #s, refer to your model #.

	WN-500H WN-500HC	WN-650H WN-650HC	WN-750H WN-750HC	WN-1000H WN-1000HC	WN-1300H	WN-1500H
Replacement Kit (H)	RK-20H- WN-500H	RK-26H- WN-650H	RK-30H- WN-750H	RK-40H- WN-1000H	RK-51H- WN-1300H	RK-59H- WN-1500H
Replacement Kit (HC) <i>(Includes blade)</i>	RK-20HC- WN-500HC	RK-26HC- WN-650HC	RK-30HC- WN-750HC	RK-40HC- WN-1000HC	N/A	RK-59HC- WN-1500HC
Heating Element <i>(2.7mm)</i>	HE-20-2.7-WHLH	HE-26-2.7-WHLH	HE-30-2.7-WHLH	HE-40-2.7-WHLH	HE-51-2.7-WHLH	HE-59-2.7-WHLH
Heating Element <i>(Round)</i>	HE-20-0-WHLH	HE-26-0-WHLH	HE-30-0-WHLH	HE-40-0-WHLH	HE-51-0-WHLH	HE-59-0-WHLH
PTFE Adhesive	TA-20	TA-26	TA-30	TA-40	TA-51	TA-59
PTFE Roll <i>(1ft roll)</i>	TR-20	TR-26	TR-30	TR-40	TR-51	TC-59-5mil-2 2" x 59"
Blade	B-WH	B-WH	B-WH	B-WH	N/A	B-WH
Silicone Sponge <i>(not included in RK)</i>	SRS-WN-500H/C	SRS-WN-650H/C	SRS-WN-750H/C	SRS-WN-1000H/C	SR-WN-1300H	SR-WN-1500H

To install your replacement kit on your sealer, turn off power and unplug sealer.

Removing Worn Parts

1. Remove the heating element cover (Figure 4).
2. Loosen the screws on the PTFE cover plate (Figure 5).

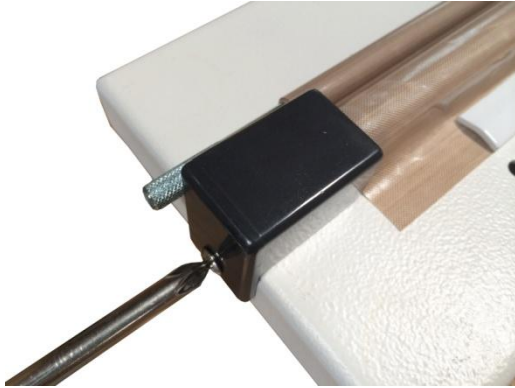


Figure 4. Remove heating element cover



Figure 5. Remove PTFE cover plate

3. Lift up the PTFE cover to expose the heating element.
4. Remove the heating element by lifting off the eyelets of the heating element from the mounting spring on both ends (Figure 6).
5. Peel off the PTFE adhesive under the heating element (Figure 7).



Figure 6. Remove heating element from mounting spring



Figure 7. Remove PTFE adhesive

Installing New Replacement Parts.

1. Remove the backing of the liner found on the PTFE adhesive.
2. Apply it to the sealer's sealing platform. The PTFE adhesive must always extend past the sealing platform by approximately $\frac{1}{4}$ " to $\frac{1}{2}$ " on both ends. Bend down the excess on both ends. (The PTFE adhesive acts a barrier between the metal body and the heating element. Never allow the heating element to come in direct contact with the sealer's body because it will damage the timer.)

3. Place a new element on top of the PTFE adhesive by fitting one eyelet of the heating element on one mounting spring followed by the other mounting spring. Using a screwdriver to flex the mounting spring inward will ease the placement of the element on the mounting spring. Check the element to ensure it is tight and intact.
4. Cut off any worn out PTFE cover. Ease out enough footage of PTFE cover to cover the heating element and extend to the front of the PTFE cover plate.
5. Tighten the screws to affix the PTFE cover plate.
6. If a whole roll of PTFE cover needs to be replaced, loosen the multi-star knob (Figure 12, Item #47) found on the plate for PTFE (Figure 12, Item #48) and remove the PTFE roller (Figure 12, Item #6). Tape one end of the PTFE cover to the rod and roll up the entire piece. Position the PTFE cover and rod using the plate for PTFE. Ease out enough footage of PTFE cover to cover the heating element and extend to the front of the PTFE cover plate.

Removing and Replacing Cutter Blades (HC models only)

1. Remove the cutting blade bracket from the silicone bracket. Remove the screw, washers and spacer from the silicone bracket. Slide the cutting bracket out.



Figure 8. Unscrew the silicone bracket and remove screw, washer and spacers.



Figure 9. Slide the cutting bracket out.



2. Remove the cutter protector and carefully remove the old blade. *The blade found on the Long Hand sealer with cutter is very sharp. Use extreme caution when handling or changing the blade.*



Figure 10. Remove cutter protector.



Figure 11. Carefully remove the old blade.

3. Replace the old blade with a new blade. Replace cutter protector and screw back into place.
4. Slide the cutting bracket back on the silicone bracket. Install the spacer, washer and screw to hold the silicone bracket in place.

Parts Diagram

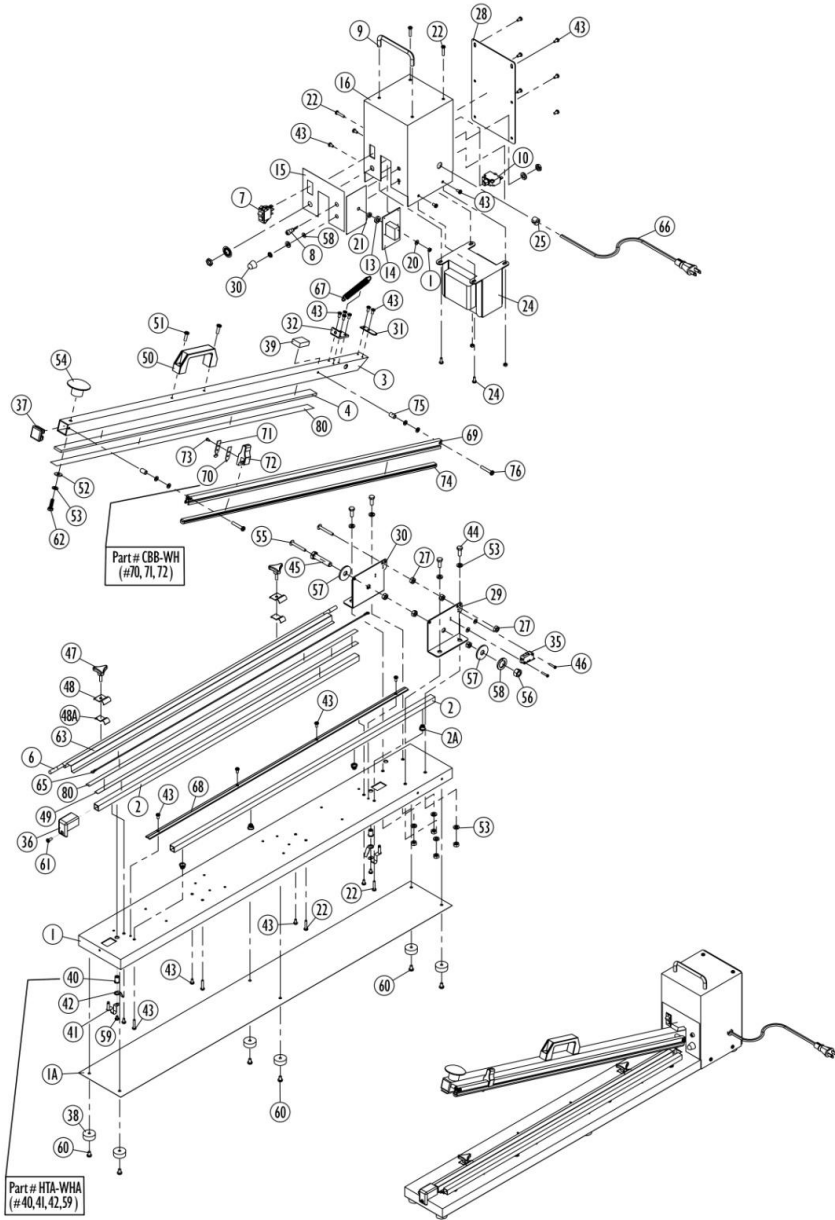


Figure 12. Spare Parts Diagram

WHLH INSTRUCTION MANUAL

Item	Part #	Description	Comments
RKs	RK-Model#	REPLACEMENT KITS Includes (2) elements, (2) PTFE adhesives, 1ft PTFE Cover, and blade if cutter unit (HC)	specify model # when ordering
1		Base	specify model # when ordering
2		Square Tube for WHLH and WHI	specify model # when ordering
2a	WHI-65	Spring for Square Tube for WHLH and WHI	
3		Sealing Bar / Upper Arm	specify model # when ordering
4	SRS-specifymodel#	Silicone Sponge, Compression Foam	
	SR-WN-1500H	Gen 1.0 Silicone Rubber for WN-1500H/HC (clear color)	
	SRS-WN-1500H/HC	Gen 2.0 Silicone Sponge for WN-1500H/HC (orange color)	
5		Fixed Plate for PTFE Cloth/Cutter	specify model # when ordering
6		Roll Stick for PTFE Cloth (none on WN-1500H/HC)	specify model # when ordering
7	WHLH-7	Power Switch, 3P, 15A/125V (W-Series)	
8	WHA-33	Lamp (R), LED for E.G.O. E-00302 for (W-Series)	
9	WHLH-9	Handle (metal) for WHLH and WHA	
10		Circuit Breaker	
	WHI-11b	Circuit Breaker, 10A, WN-500H/HC	
	WHI-11c	Circuit Breaker 15A for WN-650H/HC, WN-750H/HC, 1000H/HC, 1300H, 1500H	
11	WHA-36	Variable Resistor - 1M (W-Series)	specify model # when ordering
12	WHA-30	Knob, Red for (W-Series)	specify model # when ordering
13		Isolated Washer for PCB	
14	PCB-model#	PC Board	specify model # when ordering
	T-WH	Timer for WN-1500H / WN-1500HC only	
15	WHLH-15	Panel Sticker, Control Panel Cover	
16	WHLH-16	Timer Box / Skull	
17		Washer	
18		Nut M4	
19			
20	WHLH-20	Paper Plate (Red) Insulator	
21	WHLH-20	Paper Plate (Red)(S) Insulator	
22		Screw	
23		Transformer	
23a	TRNS-WN-500H/HC	Transformer (20") #1035	for WN-500H/HC
23b	TRNS-W-650/750	Transformer (26", 30") #1037	for WN-650H/HC, 750H/HC
23c	TRNS-900/1000	Transformer (35", 40") #1039	for WN-900H/HC, 1000H/HC
23d	TRNS-specifymodel#	Transformer 220V	
24		Screw M4*10 for Transformer	
25	WHA-43	Grommet (W-Series)	
26	WHI-62	Screw - M4*25 for Square Tube for WHLH and WHI	
27		Nut 3/16	
28	WHLH-28	Back Plate	
29		Support Bracket-R	
30		Support Bracket-L	
30a	WHLH-30a	Support Bracket Set	
31	WHLH-31	Plate for Microswitch, Lever	
32	WHLH-32	Holder for Tension Spring / Spring Bracket	
35	MSW-WHLH-WHI	Microswitch w/Long Arm for WHLH and WHI	
36	WHLH-36	Cover for Heating Element (Screw - WHLH-61)	
37	WHLH-37	Stopper 25*25	
38	WHLH-38	Rubber Foot (WHLH / WHI)	
39		Sponge (S)	

Figure 13. Spare Parts Diagram List (Table 1 of 2)

a

WHLH INSTRUCTION MANUAL

Item	Part #	Description	Comments
40	WHLH-40	Bushing for Screw	
41	MS-WHLH	Spring Hook, Mounting	
41a	HTA-WH	Spring Hook Assembly (includes 41,42,59)	
	HTAB-WH-bracket	Heating Terminal Block for WN-1500H / WN-1500HC	
42	WHLH-42	Solderless Terminal 2-8 / Connecting Plate	
43	Screw-M4x8	M4*8 Screw	
44	WHLH-44	Hexagon Bolt M6*16	
45		Hexagon Bolt 3/8*13/4	
46		Screw M3*15	
47	WHA-15	Multi Star Knob (W-Series)	
48	WHA-14	Plate for PTFE Sheet (Clip) (W-Series)	
49	WHLH-49	Fiber Plate - 1.2m (47") - cut to fit	
50	WHLH-50	Handle Plastic	
51		Screw M5*15 for Handle	
52		Spring Washer for Handle Knob	
53		Washer, for Handle Knob	
54	WHLH-54	Lever Knob, Round (WHI and WHLH)	
55	WHLH-55	Screw 3/16 * 1 1/2, Support Bracket	
56		Nut 3/8	
57		Spring Washer 3/8	
58		Washer 3/8, Hinge	
59	WHLH-59	Screw M4*6, Mounting Spring #41	
60	WHLH-60	Screw M5*8, Rubber Foot #38	
61		Screw M4*10	
62		Hexagon Bolt M6*20, for Knob #54	
63	TR-specifymodel#	PTFE Cloth	specify model # when ordering
	TC-59-5mil-2	PTFE Cloth for WN-1500H/WN-1500HC	
64			
65	HE-	Heating Element	
66	PWC-WH	Power Cord	
67		Spring Arm	
67a	WHLH-67a	Spring Arm, 2.6 for WHI and WHLH	for WN-500H/HC
67b	WHLH-67b	Spring Arm, 3.0 (Weight - 1.4oz) for WHI and WHLH	for WN-650H/HC, 750H/HC
67c	WHLH-67c	Spring Arm, 3.5 (Weight - 1.7oz) for WHI and WHLH	for WN-900H/HC, 1000H/HC
68		Same as Part #5	
69		Silicone Bracket for Cutter Unit	
70	B-WH	Blade	
71	CB-WH	Protector for Cutter	Includes #71, #72
72	CB-WH	Cutting Blade Bracket	Includes #71, #72
	CBB-WH-HD	Cutting Blade Bracket w/ Blade - Heavy Duty	
73	WHLH-73	Screw M3*8 for Blade	
73a		Screw M3*3 Front of Heavy Duty Blade	
73b		Screw M3*12 Back of Heavy Duty Blade	
74	SRC-	Silicone for Cutter Unit for WHI and WHLH	specify model # when ordering
75	WHLH-75	Bushing for Cutter Unit, Rubber Spacer for WHLH and WHI-C	
76	WHLH-76	Screw M5*30, Cutter Unit Bracket	
80	TA-specifymodel#	PTFE Adhesive Tape	specify model # when ordering
81	WHLH-81	Connector Plate	

Figure 14. Spare Parts Diagram List (Table 2 of 2)

Troubleshooting

Problem	Possible Causes	Solution
No sealing Timer lights off	<ol style="list-style-type: none"> 1. Disconnected power cord 2. Power cord is broken 3. Blown fuse 4. Transformer is broken 	<ol style="list-style-type: none"> 1. Check or change plug 2. Replace power cord 3. Replace fuse 4. Replace the transformer
No sealing Timer lights are on	<ol style="list-style-type: none"> 1. Heating element is broken 2. Poor contact at heating terminal assembly 	<ol style="list-style-type: none"> 1. Replace the heating element 2. Clean, tighten or change the heating terminal assembly
No sealing Power light on Heat indicator off	<ol style="list-style-type: none"> 1. Footswitch malfunction 2. Microswitch malfunction 3. Microswitch out of place 	<ol style="list-style-type: none"> 1. Replace footswitch 2. Replace microswitch 3. Adjust microswitch
Burnt PTFE cloth	<ol style="list-style-type: none"> 1. Timer malfunction 2. Timer setting too high 	<ol style="list-style-type: none"> 1. Replace timer 2. Decrease timer setting
Broken heating element	<ol style="list-style-type: none"> 1. Worn PTFE adhesive 	<ol style="list-style-type: none"> 1. Replace PTFE adhesive
Wrinkled seal	<ol style="list-style-type: none"> 1. Seal time is set too high 2. Cooling (congeal) time is too short 	<ol style="list-style-type: none"> 1. Decrease 2. Increase congealing time
Imperfect seal	<ol style="list-style-type: none"> 1. Worn PTFE cloth 2. Worn silicone rubber 	<ol style="list-style-type: none"> 1. Replace PTFE cloth 2. Replace the silicone rubber
Burnt seal	<ol style="list-style-type: none"> 1. Seal time is set too high 	<ol style="list-style-type: none"> 1. Decrease seal time
No seal	<ol style="list-style-type: none"> 1. Seal time is set too low 	<ol style="list-style-type: none"> 1. Increase seal time
Seal sticking to PTFE cloth	<ol style="list-style-type: none"> 1. Worn or dirty PTFE cloth 2. Worn or dirty silicone rubber 	<ol style="list-style-type: none"> 1. Replace or clean PTFE cloth 2. Replace or clean silicone rubber