

User Manual

Manual de Usuario

Manuel de l'Utilisateur

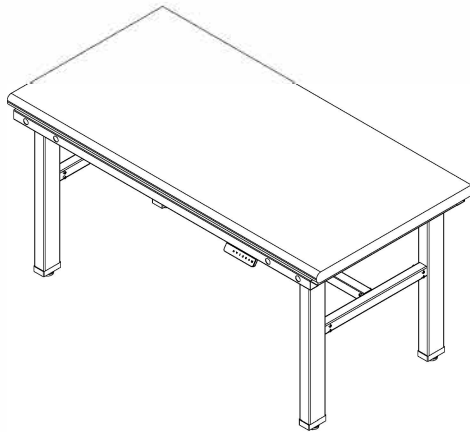
Customer Service
US: 1-800-645-2986

Servicio de atención al Cliente
US: 1-800-645-2986

Service à la clientèle
Canada: 888-645-2986

HEAVY DUTY ELECTRIC ADJUSTABLE HEIGHT WORKBENCH

Model no. 800577, 800578, 800579, 800580



Technical Specifications

Height Range	70CM-100CM (without desktop)
Base Width	146CM-177CM
Travel Speed	6 per second (no load)
Weight Capacity	1000 LBS
Duty cycle	10% Max. 2 mins on, 18 mins off
	Soft start/stop
	Adjustable leveling studs
	4 Memory presets

Caution / Information

Make sure no obstacles are in the desk's path. Make sure the desktop is not touching any walls. Make sure all cords are appropriate length to accommodate the change in height.

WARNING
Pinch Point
Keep hands and fingers clear

Keep children away from electric height-adjustable desks, control units and handsets. There is a risk of injury and electric shock

Keep all electrical components away from liquids.

Do not sit or stand on the desk frame. Do not crawl or lie under the desk frame.

Do not place any objects taller than 20" underneath the desk.

Do not open any of the components ---the Legs, Control Box, or Switch. There is a danger of electric shock.

This product is designed with a duty cycle of 10%. (2 min. on, 18 min. off)

In the event of a power outage or if the power cord is unplugged, a manual reset may be necessary---see Step 9.

Use/Liability

This height adjustable desk has electric motors and is designed for use in dry work areas only.

The desk height is adjustable so that it can be positioned at the most ergonomically suitable height.

Any other use is at user's risk.

Under no circumstances does the manufacturer accept warranty claims or liability claims for damage caused from improper use or handling of the desk frame.

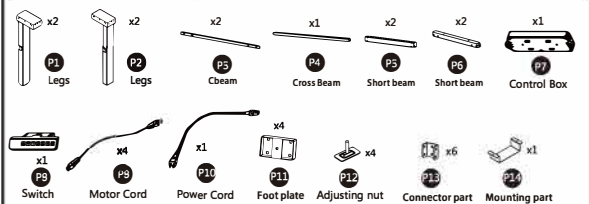
Important:
Please read this manual carefully, if this desk is sold, please provide this manual to the buyer.

Parts

Tools required



Tools required



Hardware

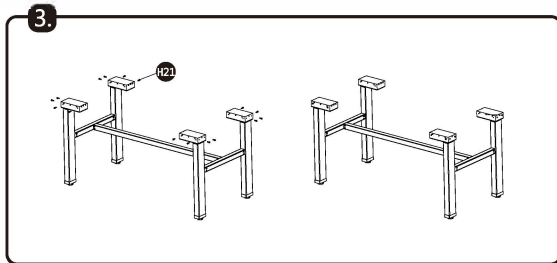
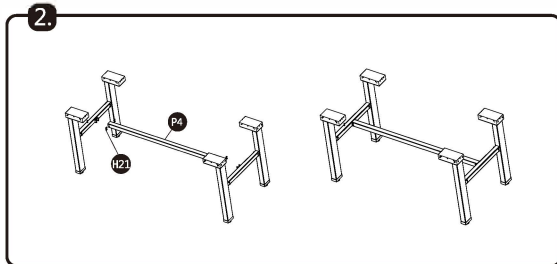
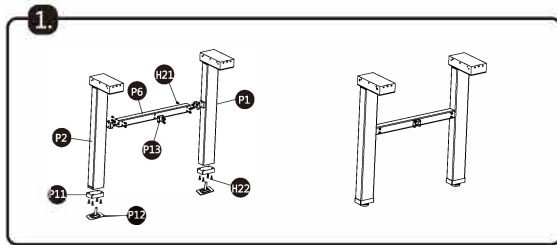


Hardware

No.	Description	Qty
P1	Leg	2
P2	Leg	2
P3	Cbeam	2
P4	Cross Beam	1
P5	Short beam	2
P6	Short beam	2
P7	Control Box	1
P8	Switch	1
P9	Motor Cord	4
P10	Power Cord	1
P11	Foot plate	4
P12	Adjusting nut	4
P13	Connector part	6
P14	Mounting part	1
H21	Machine Screws: M6x10	40
H22	Machine Screws: M6x16	16
H23	Wood Screws: M5x16	12
H24	Wood Screws: M4x16	2
P25	Cable Clips	16

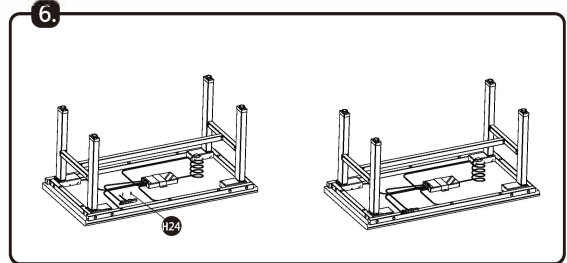
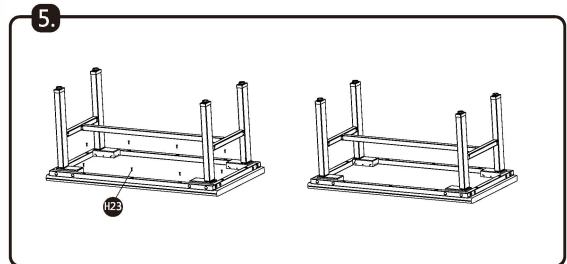
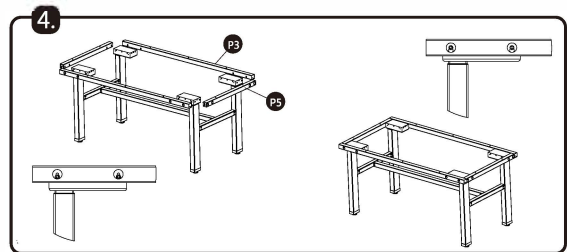
HEAVY DUTY ELECTRIC ADJUSTABLE HEIGHT WORKBENCH

Assembly Instructions



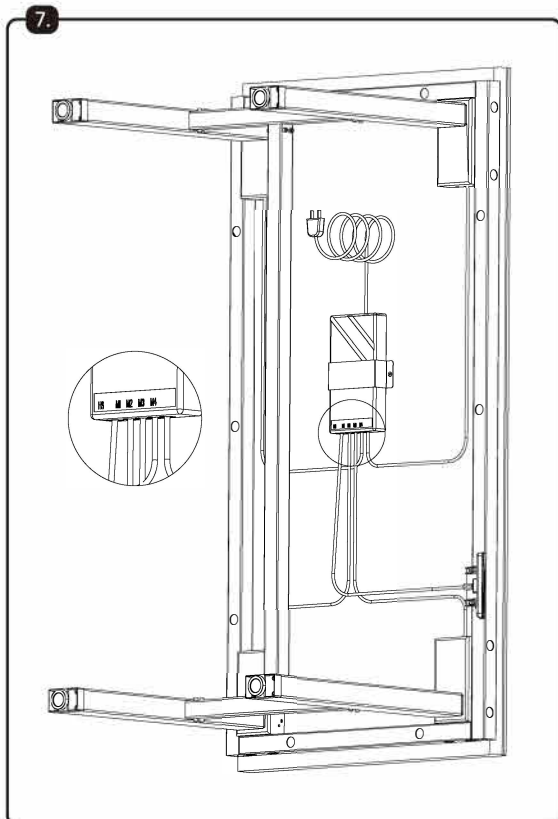
page 4

Assembly Instructions



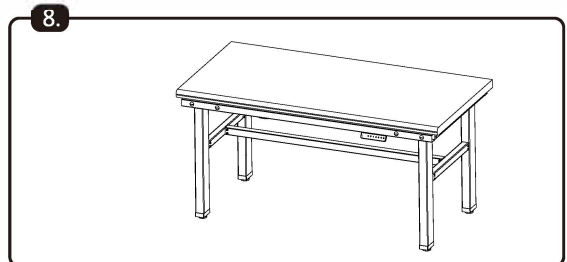
page 5

Assembly Instructions



page 6

Assembly Instructions



9.

Plug the Power Cord (P9) into a 110V outlet.

! Make sure no obstacles are in the desk's path.
Make sure the desktop is not touching any walls.
Make sure all cords are appropriate length to accommodate the change in height.
Important: You must Reset the desk prior to use.

Reset Procedure: Press and hold the DOWN button on the Switch (P7) until the desk reaches its lowest height. Release the DOWN button. Press and hold the DOWN button again until the LED display reads "RES" or about 10 seconds on non-LED handset models. Release the DOWN button. Press and hold the DOWN button again until the desk lowers a little bit more, slightly rises and stops. Release the DOWN button. Your desk is now ready to use.

To program up to four presets (on some models): Use the up/down buttons to find a desired height, then press "M" ("S" on some models) followed by a number 1-4.

Caution: Once a preset button is pushed, the desk will move to the programmed height (see caution box above).

10 Troubleshooting

If your desk is not functioning properly it may need to be reset. Unplug the power cord for 20 seconds. Plug the power cord back in and follow the RESET procedure outlined in Step 11.

If your desk has a handset with an LED readout and it displays "RES" (reset), perform the reset procedure outlined in Step 11.

If the LED readout displays an error message ("E1" -- "E60") confirm that all wired connections are secure (legs to cables, cables to control box). Then perform the reset procedure outlined in Step 11.

If the error message persists after the reset procedure, contact your seller.

If the height between the legs exceeds 1.5 inches, stop the reset procedure & contact your seller.

If the handset displays "HOT", let the base cool down for 20 minutes.

page 7

Control Panel Instructions

88.8



Reset

When powering on for the 1st time, or if the display shows **E 10**, **E20** or **E60** hold **M** for 3 seconds until **rES** shows on the screen. The desk will reset both legs to the lowest position.

Lifting

Press to raise and lower the desk

Memory

Press **M** and then press **1** - **4** to save the current height to memory

Setup Mode

Press **M** for 3 seconds until **S--** flashes on the display. Press **M** again to enter setup mode.

Use to scroll through the setup options, pressing **M** to select one of the following modes:

Un Units	S Displays height in cm I displays height in inches
br Brightness	L Low, N Normal or H High screen brightness
bEE Beep	OFF or On
CF Collision Force	OFF , L Light, N Normal or H Heavy collision force detection
SH Set Height	0 Original height after RESET Program H High & L Low height limits
Sn Serial Number	Scrolls in display window
dE Demo	(Mode disabled)

Error Codes

Hot Overheat Alert	Let unit cool down
E02 Collision / Tilt	Eliminate cause of collision, tilt or vibration Press any key to clear RESET
E 10 Motor Error	Check all cables and connections Power OFF/ON RESET
E20 Overload	Remove heavy objects from desktop Power OFF/ON RESET
E31 Low Voltage	Power OFF/ON, RESET
E32 High Voltage	Power OFF/ON, RESET
E60 Sync Error	Check all cables and connections for both motors Power OFF/ON RESET