

**User's manual**
**Manual del usuario**
**Manuel de l'utilisateur**
**Customer Service**  
 US: 1-800-645-2986

**Servicio de atención al Cliente**  
 US: 1-800-645-2986

**Service à la clientèle**  
 Canada: 888-645-2986

# Global Industrial™ Auto Ride-On Floor Scrubber, 22" Cleaning Path

**Model: 641407**

## IMPORTANT INSTRUCTIONS



### Technical Specifications

Cleaning Width	22"
Squeegee Width	30.7"
Working Capacity	30,140 sq ft/h
Brush Pressure	87.8lbs
Brush RPM	180 rpm
Brush Motor	24V/500W
Suction Motor	24V/390W
Traction Motor	24V/300W
Drive Speed	0-3.1 mph
Solution Tank	23.8 gallon
Recovery Tank	26.4 gallon
Machine Dimensions (Excluding Squeegee)	57.5" x 31.5" x 49.2" (L x W x H)
Battery	2 x 100Ah
Battery Weight	2 x 80lb
Machine Weight	286.6lb

- Do not operate the machine unless trained and authorized
  - Flammable materials can cause an explosion or fire. DO NOT use flammable materials in tank or as cleaning agent in machine.
  - Flammable materials or reactive metals can cause explosion or fire. DO NOT use to clean up flammable or combustible spills.
  - This machine is intended for commercial use. It is constructed for use in an indoor environment and is not intended for any other use.
  - Extreme caution and supervision is necessary when used near children or unqualified personnel
- Conditions of use: Room temperature between 32°F and 104°F with relative humidity between 30 and 95%.  
Do not place objects on the unit or allow objects to obstruct the inlet or outlet openings. Do not operate in close proximity to walls, curtains, etc.
- Do not use acid solutions, which may damage the machine or harm the operator.
  - Always turn off and unplug the machine prior to assembling, performing routine maintenance, or when not in use.
  - The use of attachments or accessories not recommended or sold by Global Industrial may cause personal injury and/or property damage. DO NOT attempt to fix the machine by yourself. All repairs must be made by authorized personnel.
  - Do not modify the machine.
  - Avoid moving parts. Do not wear loose fitting clothing while using/servicing the machine
  - Do not put any flammable materials into solution tank. This can cause an explosion or a fire. Only use approved cleaning chemicals. Contact Global Industrial (1-800-645-1232) for recommendations on proper cleaning solutions.
  - Empty the solution and recovery tank before storing the machine.
  - This machine shall be stored indoors only.
  - Do not use the machine on surfaces with an inclination greater than the one shown on the plate.

**ORDER YOUR  
CLEANING  
CHEMICALS &  
PADS**

 globalindustrial.com  
 or Call 1-800-645-1232

 Floor Cleaner  
 Model 640404 (Case of 4)

 Floor Cleaner  
 Model 640404 (Case of 4)

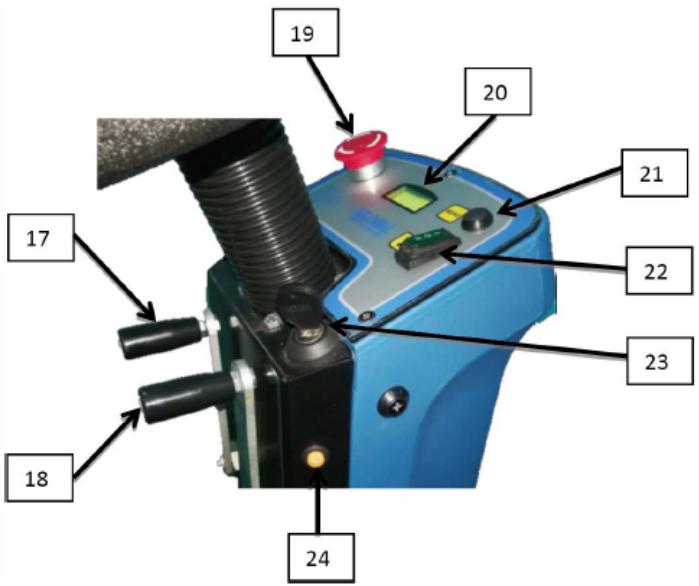
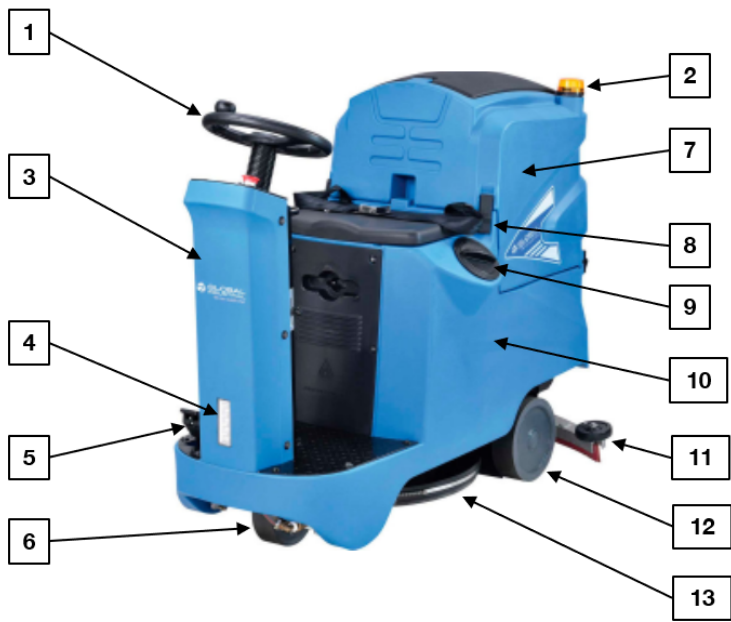
 Multi Purpose Cleaner/Degreaser  
 Model 640407 (Case of 4)

 Heavy Duty Cleaner/Degreaser  
 Model 640406 (Case of 4)

 PADS (Case of 5)  
 17" Scrubbing Pad  
 Model 261164GN  
 17" Buffing Pad  
 Model 261164RD

# 22" Auto Ride-On Scrubber

## 1 Machine Components



- 1. Steering wheel
- 2. Warning light
- 3. Steering column
- 4. Front light
- 5. Drive pedal
- 6. Front wheel
- 7. Recover tank
- 8. Seatbelt
- 9. Solution tank cap

- 10. Solution tank
- 11. Squeegee assembly
- 12. Drive wheel
- 13. Brush head assembly
- 14. Solution tank hose
- 15. Recovery tank cover
- 16. Recovery tank hose
- 17. Squeegee lifting lever
- 18. Brush lifting lever

- 19. Emergency stop
- 20. LCD display
- 21. Menu button
- 22. Direction switch
- 23. Key switch
- 24. Horn button

# 22" Auto Ride-On Scrubber

## 2 Before Startup

### ! Warning

- Batteries emit hydrogen gas and an explosion or fire can result. Keep sparks and fire away from batteries at all time. When charging the machine, keep the battery compartment left open.
- Do not operate machine unless you have read and understand this manual.
- Do not use your fingers to wipe or remove debris from the blades, as injury may occur.
- Flammable materials can cause an explosion or fire. DO NOT use flammable materials in tanks as cleaning agents.
- Always empty recovery tank before filling solution tank.
- Always empty and clean the recovery tank after using the machine.
- Do not fill the solution tank before emptying the recovery tank.
- Before performing any maintenance on the machine, be sure that the power is turned off.
- Repairs are to be completed by authorized personnel / service centers only.
- Do not put any flammable materials into solution tank. This can cause an explosion or a fire. Only use approved cleaning chemicals. Contact Global Industrial (1-800-645-1232) for recommendations on proper cleaning solutions.
- Foam must not enter the float shut-off screen or damage can occur to the vacuum motor. Foam will not activate the machine's float shut-off device.

### Package Contents

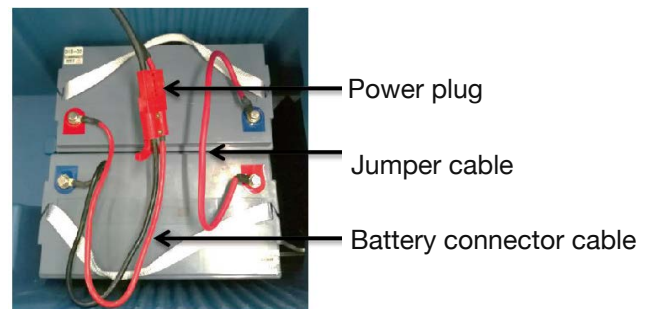
1. Machine
2. Squeegee assembly
3. Pad Driver
4. Battery
5. Charger
6. Jumper cable and battery connector cable

### Machine Setup

1. Be sure to connect the 24V battery.
2. Check that squeegee assembly is properly installed.
3. Check that pad driver is properly installed.
4. Ensure the working surface is able to support the weight of the machine.
5. Always close recovery tank cover fully prior to use.

### Connecting the Batteries

1. Connect the battery connector cable and charging connector cable according to the wire diagram.
2. Connect the power plug and battery plug.  
NOTE: Charging plug is on the solution tank under the seat.



### Charging the Batteries

1. Disconnect the power plug.
2. Connect the battery connector cable to the charger.
3. Connect the charger to the power supply.
  - Red ON or FLASHING = Fault
  - Yellow FLASHING = No battery connected
  - Yellow ON = Normal charging
  - Green ON = Fully charged

# 22" Auto Ride-On Scrubber

## 2 Before Startup

**Warning**

Use only approved chargers with the following specifications:

- Automatic shut-off circuit
- Deep cycle charging
- Output current of 15 amps
- Output voltage of 24 volts



**NOTE:**

Placeholder text for a note.

**Warning**

- Do not place battery charger on wet surface or in a puddle when operating charger.
- **RISK OF EXPLOSION:** A highly explosive gas mixture is produced when charging batteries.
- Battery acid is highly caustic, always wear protective gloves and eye protection.
- Do not tilt battery, otherwise acid may flow out of the vent openings.
- No fire, sparks, naked lights or smoking:
- Avoid creating sparks when handling cables and electrical equipment.
- Avoid short circuits.
- Keep acid and batteries away from children.
- Batteries are dangerous. Batteries emit hydrogen gas, and an explosion or fire can result. Keep sparks and fire away from batteries at all time. When charging the machine, keep the battery compartment left open.

**Caution**

Wear eye protection.

### Squeegee Installation



Knobs

Loosen the two knobs on the squeegee assembly. Connect the vacuum hose to the vacuum hole on the squeegee assembly




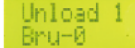
Align the knobs with the slots and tighten the knobs.


# 22" Auto Ride-On Scrubber

## 2 Before Startup (cont'd)

### Pad Driver/Brush Uncoupling

1. Turn on the key switch. Keep the brush/pad head assembly in the raised position.
2. Press MENU button  for 5 seconds.

The LCD will show the following: 

then press the MENU button  for 3 seconds. The brush will start automatically removing the brush/pad driver.

### Pad Driver/Brush Coupling

1. Place the brush/pad driver under the head assembly.
2. Put down the brush lifting lever, it will start automatically installing the brush/pad driver.
3. Lift the brush lifting lever.



#### ATTENTION:

If you do not successfully complete the coupling/uncoupling of brush/pad driver, please repeat the above actions in order.



### Solution Tank

1. Remove the solution tank cap and fill with clean water for regular cleaning surfaces. For deep and dirty surfaces, contact Global Industrial (1-800-645-1232) for recommendations on proper cleaning solutions.



2. Check the water level through the solution tank hose.



# 22" Auto Ride-On Scrubber

## 3 Operation

### Turning On the Machine

1. Turn on the key switch

**Display information when active:**

Brand: **GLOBAL**

Software version: **Ver .XX**

Display information when working:

Battery level:  (Flashes when at low levels)

Total functioning time: 00000:00 (hour:minute)

2. Short pressing **MENU** shows the battery voltage.

### Driving the Machine

The machine is equipped with electronic traction control.

**To move forward:** Set direction switch to forward and step on the drive pedal. Speed will vary depending on pressure applied to drive pedal.

**To move backward:** Set direction switch to backward and step on the drive pedal. Speed will vary depending on pressure applied to drive pedal.

**NOTE:** When the squeegee lifting lever is lowered the machine can only move forward, but not backwards.



#### Activating the Brush Motor

Shift the direction switch forward or backward. Lower the brush lifting lever. The brush motors should activate.



#### Activating the Suction Motor

Lower the squeegee lifting lever. The suction motor should activate.

**NOTE:** When the squeegee lifting lever is lowered the machine can only move forward, but not backwards.



#### Adjusting the Water Flow

**To increase water flow:** Slide the water adjustment lever downwards

**To decrease water flow:** Slide the water adjustment lever upwards

# 22" Auto Ride-On Scrubber

## 3 Operation (cont'd)

### Shutting Down

- Raise the head assembly from the floor by raising the brush head lifting lever. The motor should shut off.
- Raise the squeegee assembly by raising the squeegee lifting lever. The vacuum motor should shut off after 15 seconds.
- Empty and clean the recovery tank.

## 4 Care and Maintenance

### Daily Maintenance

- Wipe down the whole machine with a clean/damp cloth
- Empty the solution tank by opening the solution tank drain pipe.



- Drain and rinse out recover tank with clean water.



- Clean the vacuum filter by removing the vacuum intake cap.
- Remove the pad driver/brush and squeegee assembly. Clean with clean water.
- Check the battery level.



### Monthly Maintenance

- Flush out solution tank with clean water
- Remove the clear cap and the solution tank filter. Clean with clean water.



- Clean the rubber skirt on the brush head assembly by removing the spring lock.



- Motors should be tested every 250 hours of use. Turn on/off both pad/brush and vacuum motor to ensure the motors are working properly.

# 22" Auto Ride-On Scrubber

## 4 Care and Maintenance (cont'd)

### Squeegee Rubber Blade Replacement

1. Remove the squeegee assembly from the unit (refer to squeegee installation instructions)



2. Unlock the spring lock and slide the blades out.
3. Replace with new blade and reassemble.

### Battery Maintenance

- Always follow the battery charging directions as outlined in the **Charging the Batteries** section of this manual.
- Keep battery tops and terminals free from corrosion. A strong solution of baking soda and water is the best way to keep batteries corrosion-free. **Do not allow baking soda / water solution to enter the battery cells.**
- Use a wire brush with the baking soda solution to properly clean the battery posts and connections.
- Check battery connections for wear and loose terminals. Replace if necessary.

### Battery Disposal

- Old batteries must be disposed in compliance with specific local regulations.
- Never dispose of old batteries as regular waste.

### Storage

- Store the machine indoors in a dry location.
- Always store the machine with the squeegee and pad/driver raised off the floor.
- Always drain the solution and recover tank fully before storing, especially when storing in a cold location.



# 22" Auto Ride-On Scrubber

## 5 Troubleshooting

Problem	Cause	Solution
No power	<ul style="list-style-type: none"> <li>• Not connected to the power.</li> </ul>	<ul style="list-style-type: none"> <li>• Connect to the battery.</li> </ul>
Little or no water yield	<ul style="list-style-type: none"> <li>• Water valve closed.</li> <li>• The filter is clogged.</li> <li>• The water tank is empty.</li> </ul>	<ul style="list-style-type: none"> <li>• Open the water valve.</li> <li>• Clean the filter.</li> <li>• Add the water into the water tank.</li> </ul>
Poor water absorption	<ul style="list-style-type: none"> <li>• The suction hole of squeegee is blocked.</li> <li>• The squeegee blade is abraded.</li> <li>• The suction squeegee is not installed correctly</li> <li>• The suction hose is abraded or loose.</li> <li>• The suction hose is blocked.</li> <li>• The cap of the drain pipe is loose.</li> <li>• The cover of drain tank is opened.</li> <li>• The drain tank is full.</li> <li>• Vacuum motor inlet is blocked.</li> <li>• Vacuum motor is loose.</li> </ul>	<ul style="list-style-type: none"> <li>• Clean the suction squeegee.</li> <li>• Replace the squeegee blade.</li> <li>• Make sure the suction squeegee is installed correctly.</li> <li>• Replace the suction hose or re-install the suction hose and tighten it.</li> <li>• Check the hose and remove blockages.</li> <li>• Tighten the cover of the drain pipe.</li> <li>• Make sure the cover of the drain tank is closed and sealed.</li> <li>• Empty the drain tank.</li> <li>• Check the vacuum motor inlet, remove blockage and clean the filter.</li> <li>• Tighten the mounting screws of the motor. <b>NOTE:</b> Overtightening the screws can damage the motor.</li> </ul>

# 22" Auto Ride-On Scrubber

## 5 Troubleshooting (cont'd)

Error Codes	F1 EMS Active
	F2 Brush Error
	F3 Vacuum Error
	F4 Vacuum Open
	F5 Brush Open
	F6 Dirty Water Tank Full
	F7 Clean Water Tank Empty
	F8 Battery Low
	F9 Battery Critically Low
	F10 Traction Error
	F11 Traction SRO
	F12 Brake Open
	F13 Brake Error
	F14 Valve Error
	F15 Pump Error
	F16 Valve Error
	F17 Valve Open
	F18 Pump Open
	F19 No Brush Error
	F20 Traction Open
	F21 Comm. Error
	F22 Self-Test NG
	F23 Over Temp
	F24 EEPROM Error
	F25 Battery High
	F26 Tract Carbon
	F27 M-Bru Carbon
	F28 Sit in Seat
	F29 Beeper Open
	F30 Beeper Error
	F31 Bru Adj Error
	F32 B Lim Sw Error