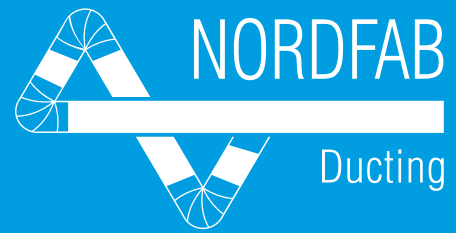


# Why Use Nordfab Ducting In Your Woodworking Facility?



## A Proven Application

Nordfab ducting has been used for dust collection in woodshops around the world for more than 40 years. Because Nordfab's Quick-Fit™ duct is well-constructed, modular, and easy to put together or take apart, and because it is re-useable, it has become a standard for ducting in the industry. Nordfab's ISO 9001 certification helps guarantee you always get high product quality.

Nordfab is the perfect match for any growing wood shop or manufacturing facility because:

- Quick-Fit (QF) ducting can be installed by almost anyone – components are assembled with a simple clamp and Gripple hangers are easy to install to keep duct securely in place.
- QF duct can easily be disassembled (unclamped) for relocation when woodworking machines are moved / or changed or new machines installed in the shop.
- QF is a modular system available in diameters from 3" - 24" (for high wear applications, heavy gauge ducting available in 8" - 24" diameters).
- QF duct can easily be moved from one building to another.
- Leakage is virtually non-existent, resulting in a highly efficient system where the suction is provided to the machines, not leakage in the ductwork.
- All the components you need are available from one source (see page 2).
- There is always a local rep to help you with layouts and exact product selection.

Contact us to find your local ducting expert:  
info@nordfab.com  
Phone: 800-532-0830

[www.nordfab-us.com](http://www.nordfab-us.com)



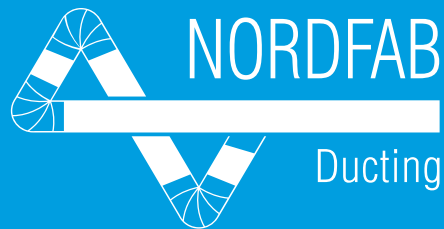
Above: Woodworking facility before installation of Nordfab ducting.

Right: After installation of Nordfab ducting.



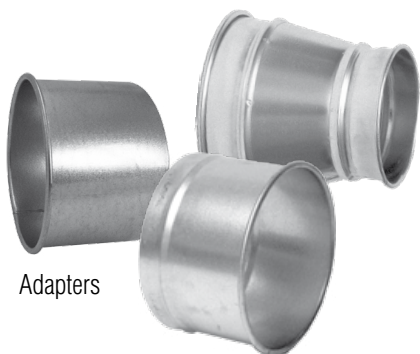
**The world's fastest ducting™**

# Why Use Nordfab Ducting In Your Woodworking Shop?



## One Source

Nordfab can provide all the duct components you need for your shop's dust collection system, built in the wall thickness your application requires (14 or 12 gauge available for highly abrasive material or high wear areas).



Adapters

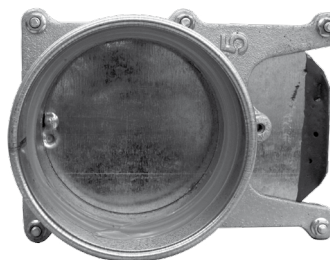


Floor Sweeps

Ball Joints



Hose



Gates

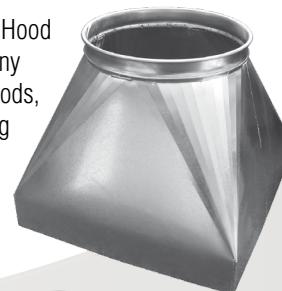


Branches



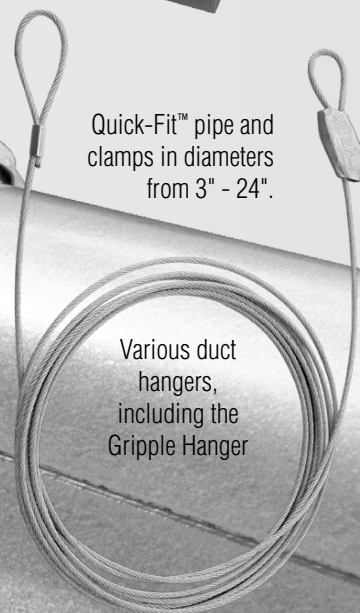
Elbows

Custom Hood  
(and many other hoods, including custom)



Custom Manifolds

Quick-Fit™ pipe and clamps in diameters from 3" - 24".



Various duct hangers, including the Gripper Hanger

Contact us to find your local ducting expert:  
[info@nordfab.com](mailto:info@nordfab.com)  
Phone: 800-532-0830

[www.nordfab-us.com](http://www.nordfab-us.com)

**The world's fastest ducting™**