



**GLOBALTM
INDUSTRIAL**

We can supply that.[®]

User's manual

Manual del usuario

Manuel de l'utilisateur

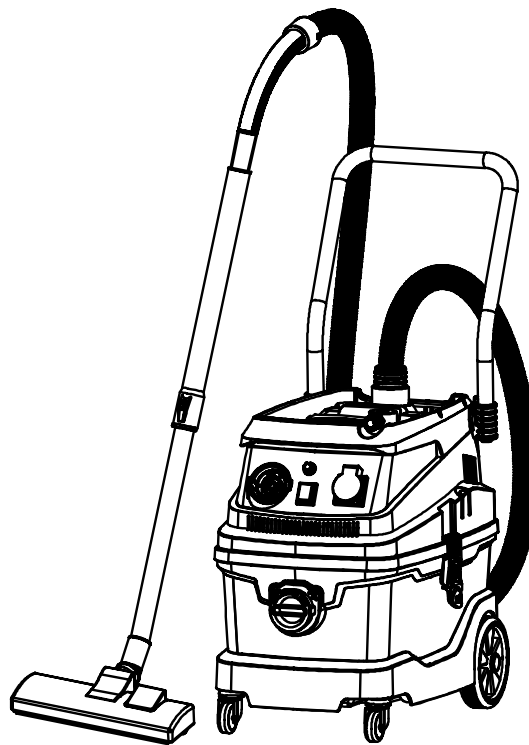
Customer Service
US: 1-800-645-2986

Servicio de atención al Cliente
US: 1-800-645-2986

Service à la clientèle
Canada: 888-645-2986

Corded Wet/Dry Vacuum

Model(s): 641807



Specifications:

Voltage	Frequency	Power	Vacuum	Effective Suction	Capacity
120V~	60Hz	1200W	18kPa	20%	8 gal.

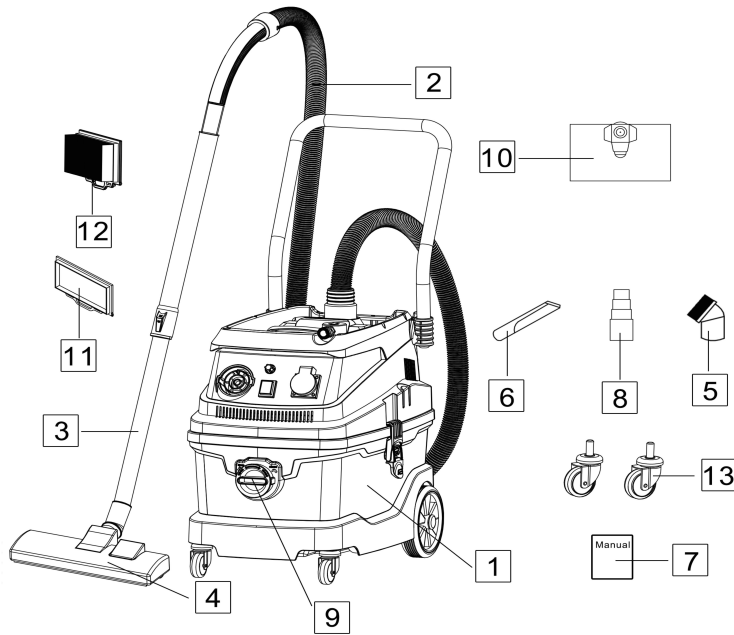
Corded Wet/Dry Vacuum

SAFETY INSTRUCTIONS

1. Do not vacuum flammable liquids, gases, or other hazards.
2. Do not step on, kink, or cut the vacuum hoses. If the hoses are damaged or otherwise impaired, cease operation of the vacuum.
3. Regularly change filter and dust bag to prevent blockage or vacuum choking.
4. Cease operation of the vacuum in the event of a blockage. Running the vacuum for an extended duration when the hose is blocked may cause permanent damage.
5. Do not stick hands or any other body parts in the vacuum hose.
6. Do not operate the vacuum with an overfilled dust bag/tank.
7. Do not allow children to operate the vacuum.
8. Vacuum can be used to clean spills and fluids, but cannot be exposed to rain or wet conditions. Water entering a power tool will increase the risk of electric shock.
9. Grounded tools must be plugged into an outlet properly installed and grounded in accordance with all local codes and ordinances. Never remove the grounding prong or modify the plug in any way. Do not use adapter plugs. Check with a qualified electrician if you are unsure if the outlet is properly grounded. If the tools should electrically malfunction, grounding provides a low resistance path to carry electricity away from the user.
10. Disconnect power cord before making any adjustments, maintenance, or storing the machine.
11. Do not use vacuum if power switch does not work. Cease operation and repair switch or replace vacuum.
12. Do not use vacuum if power cord or plug is damaged. Cease operation and repair cord/switch or replace vacuum.
13. Do not use third party or aftermarket accessories, they may impair operation of the sander or malfunction during normal use.
14. Maintain all labels and nameplates on the machine so that they are clearly visible and legible.

Corded Wet/Dry Vacuum

PACKING LIST

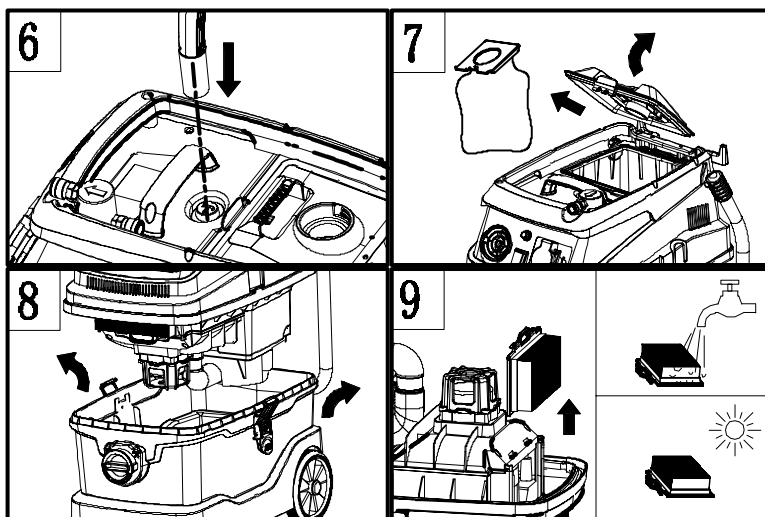
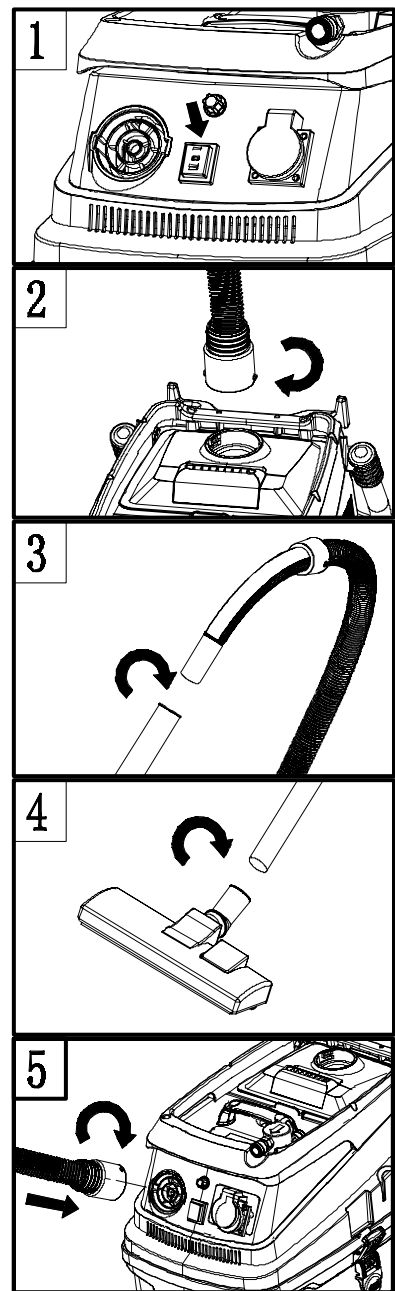


CONTENTS		
Ref.	Qty.	Description
1	1	Vacuum Cleaner
2	1	Hose
3	1	Telescoping Tube
4	1	Floor Brush
5	1	Round Brush
6	1	Small Nozzle
7	1	Manual
8	1	Rubber Adapter
9	1	Helix Hose Head
10	2	Non-woven Bag
11	1	Sponge filter
12	1	HEPA filter
13	2	Universal wheels

Corded Wet/Dry Vacuum

OPERATION INSTRUCTIONS

1. To turn vacuum on or off, use the on/off switch located at the front of the vacuum cover. When turning vacuum on, make sure it is properly plugged in first while it is still off. Turn switch off before unplugging after finishing vacuuming, or when changing accessories.
2. To connect hose to vacuum, insert end of hose into inlet and rotate clockwise until locked. To remove, rotate counterclockwise and then pull.
3. To connect telescoping tube to hose, insert hose handle into tube and rotate clockwise until tight. To remove, rotate counterclockwise and then pull.
4. To connect floor/round brush to tube, insert bottom of tube into brush outlet and rotate clockwise until tight. To remove, rotate counterclockwise and then pull.
5. To use the blower, turn the on/off switch off. Insert end of hose into blowing port, located in the front of the vacuum cover, then turn the switch on.
6. To clear blockages in hose, reduce motor speed and press hose into spring loaded button located on top of the cover. Increase suction as needed to remove blockage.
7. To install/replace dust bag, open transparent inlet cover. To install dust bag, pull back spring lock on underside of inlet cover and slide the bag opening over the inlet pipe, then release the spring lock. To remove a used bag, pull back spring lock and slide the bag off the inlet pipe. Throw out used dust bag, DO NOT reuse dirty bags.
8. To access the vacuum tank, remove the vacuum cover by opening the two side clamps and pulling the cover up and out of the tank.
9. To replace/clean filter, remove the vacuum cover first to gain access. Pull filter up to remove. Submerge filter in soapy water to clean. Allow time to dry completely before reinstalling. If filter is excessively used or damaged, replace with a new filter.

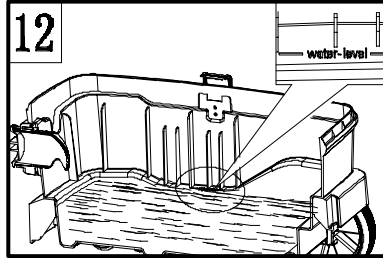
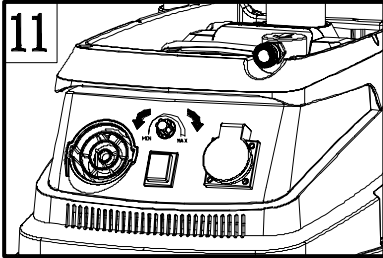
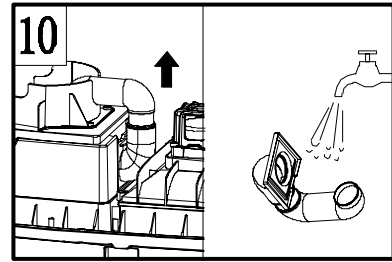


⚠ WARNING

DO NOT use vacuum to suck or blow burning or flammable material or otherwise hazardous chemicals

Corded Wet/Dry Vacuum

10. To clean pipe connectors remove them from the vacuum. Pipe connector flange slides out of channel. Wash connectors under running water.
11. To adjust motor speed, turn motor speed dial located above power switch.
12. To clean vacuum tank, remove vacuum cover and wash tank in sink with soapy water.



MAINTENANCE

1. Avoid using the vacuum for more than 20 minutes at a time.
2. Clean the filter and tank after every use and replace the dustbag. Do not run the vacuum with a dirty filter or full dust bag.
3. Dump any dirty water after vacuuming to prevent corrosion.
4. Dry all wet surfaces with a paper towel or dry cloth.
5. DO NOT vacuum for more than 20 minutes at a time, the motor may overheat.

TROUBLESHOOTING

PROBLEM	POSSIBLE CAUSE	CORRECTIVE ACTION
Motor won't start	Plug is improperly connected Power cord is damaged Outlet is not producing voltage On/off switch is broken	Reconnect plug Replace power cord Use different outlet Replace on/off switch
Reduced suction	Blockage in brush, hose, tube Filter is clogged Dust bag is full	Remove blockages Clean or replace filter Replace dust bag
Hot air coming from air outlet	Vacuum has been running for more than 20 minutes Blockage in brush, hose, tube	Turn vacuum off for 20 minutes until next use Remove blockages