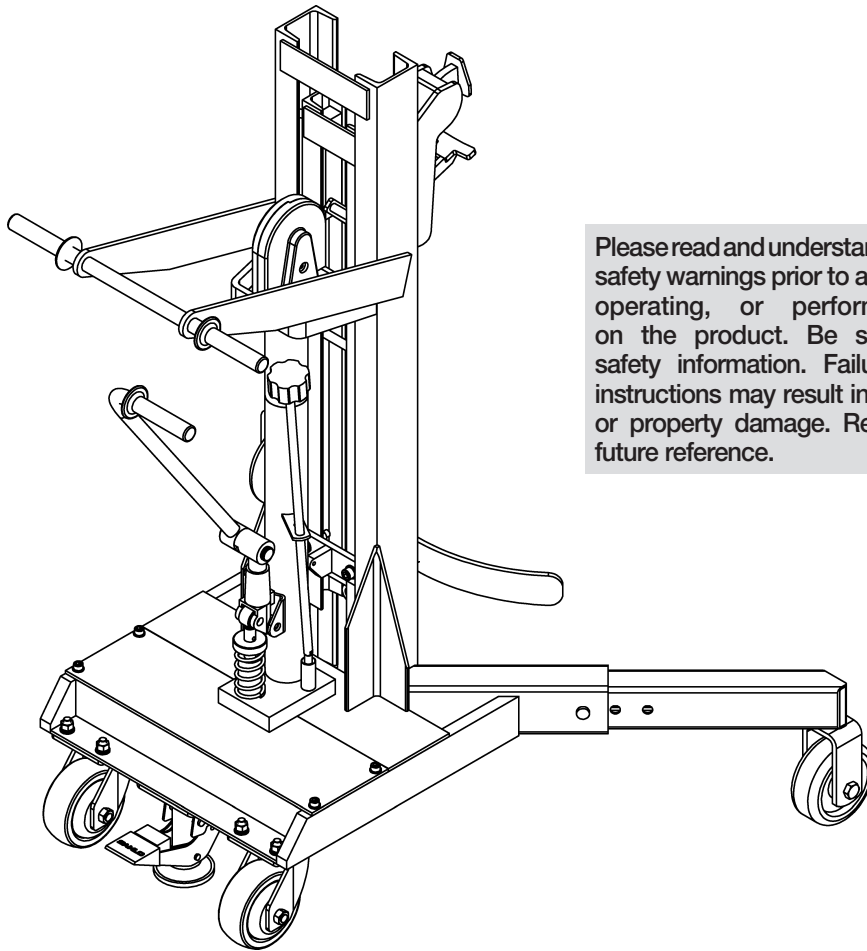


User's manual
Manual del usuario
Manuel de l'utilisateur
**Customer Service
US: 1-800-645-2986**
**Servicio de atención al Cliente
US: 1-800-645-2986**
**Service à la clientèle
Canada: 888-645-2986**

Hydraulic Drum Handler w/ Universal Grip and adjustable support

Model 615268



Please read and understand all instructions and safety warnings prior to assembling, installing, operating, or performing maintenance on the product. Be sure to observe all safety information. Failure to comply with instructions may result in personal injury and/or property damage. Retain instructions for future reference.

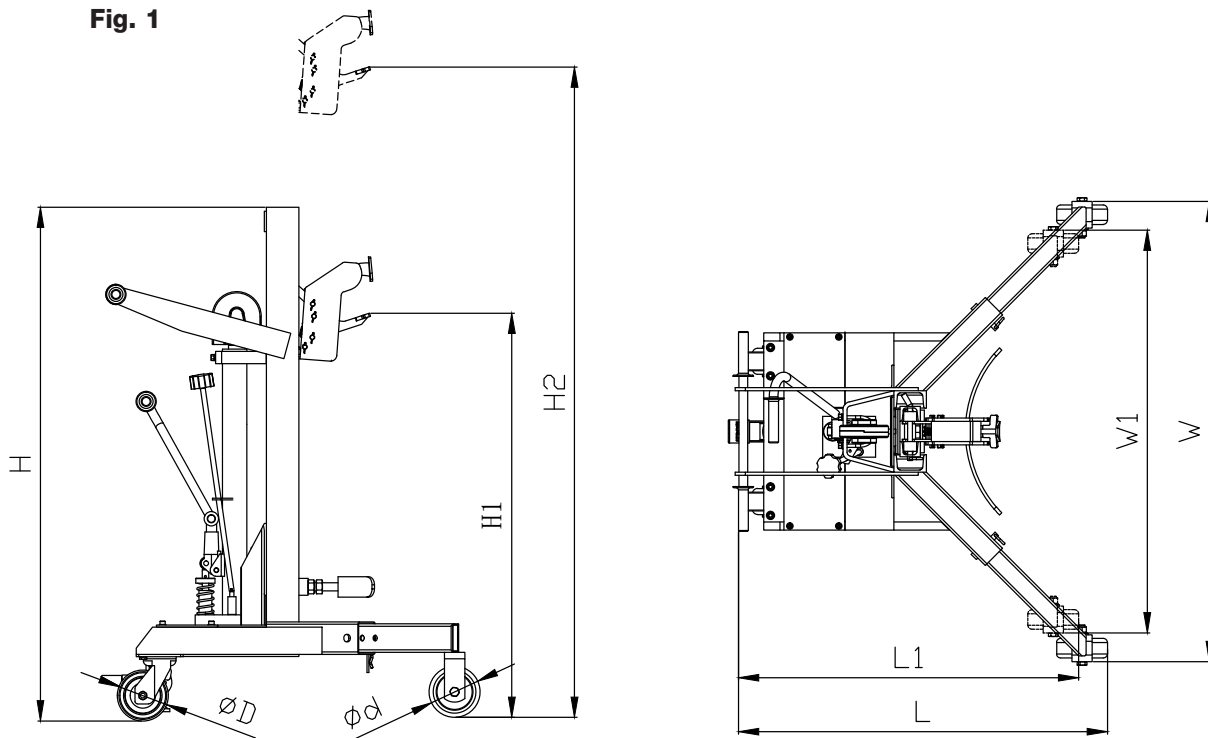
⚠ WARNING:

1. Be sure to operate drum lifter within rated load. Do not overload. Overloading will cause damage.
2. Do not exceed rated capacity of 1100 lbs.
3. Inspect unit prior to use and do not operate if damaged or in poor condition.
4. Do not abuse or mishandle unit.
5. Protect all extremities including hands, feet, and other body parts while operating or transporting.
6. During drum transport, maintain even level with surface. Never transport in elevated position.
7. Reduce lifter speed when lowering drum.
8. Improperly secured drums may fall causing damage and/or injury.
9. Do not enter beneath drum. Do not sit or stand on drum lifter.
10. Please operate strictly according to these warnings. The warnings, precautions, and instructions discussed cannot cover all possible conditions and situations that may occur. Failure to heed these warnings may result in property damage, personal injury, and/or death.
11. Do not modify or alter this drum lifter. Modifications may cause improper functionality resulting in possible injury or death.
12. Failure to heed these warnings may result in property damage, personal injury, and/or death.
13. Do not remove warning labels.
14. Follow all local codes for drum use and storage.
15. Use caution when lifting fiber or plastic drums. Verify materials can withstand drum lifting stress.

Hydraulic Drum Handler w/ Universal Grip and adjustable support

Drum loader clamps drum on ground or stacks for loading, unloading, and transit.

Fig. 1



SPECIFICATIONS		615268
Model		615268
Lifting Capacity		1100 lbs.
Lifting Height		20 in.
Front wheel Dia.		5 in.
Rear wheel Dia.		5 in.
Length	L	36 in.
	L1	33 in.
Heights	H	50 in.
	H1	33 in.
	H2	57 in.
	W	45 in.
	W1	40 in.
Lifting per stroke		0.78 in.
Drum size		22.5" Diameter, 55 gallon
Net weight		364 lbs.

Operation

Operator must be qualified, trained, and exhibit caution when using lifter.

- Drum Lifting:** Move drum lifter forward aligning clamp to drum front. Apply brake pad and pump foot pedal slowly, raising clamp assembly until drum top is engaged and raised.
- Drum Transporting:** After drum is raised, release brake, and push base track frame assembly handle.

Notice: During transport it is recommended to secure the drum in the lowest position available for safety.

- Drum unloading:** After transporting drum, slowly release valve lever until drum is firmly grounded or on pallet. Upper clamp will release the drum. Once unloaded, you may release the lever.

Notice: For safety, it is recommended to slowly release valve lever when lowering drum.

Maintenance

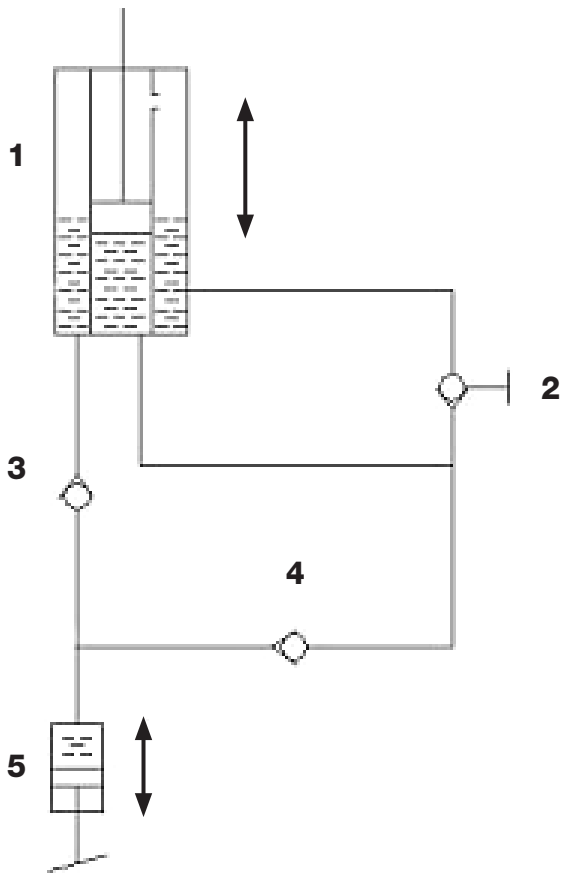
- Replace hydraulic fluid after first 20 hours of use and every 300 hours afterwards.

Choose the following or a similar specification of hydraulic fluid according to various climate conditions:

- L-HM68 (Equal to ISOVG68) if the environment temperature is -5~+45°C.
- L-HM46 (Equal to ISOVG46) if the environment temperature is -15~-5°C.

Hydraulic Drum Handler w/ Universal Grip and adjustable support

Hydraulic Circuit Diagram



No.	Description
1	Hydraulic Cylinder
2	Swivel Discharge Valve
3	Relief Valve
4	Work Valve
5	Work Cylinder

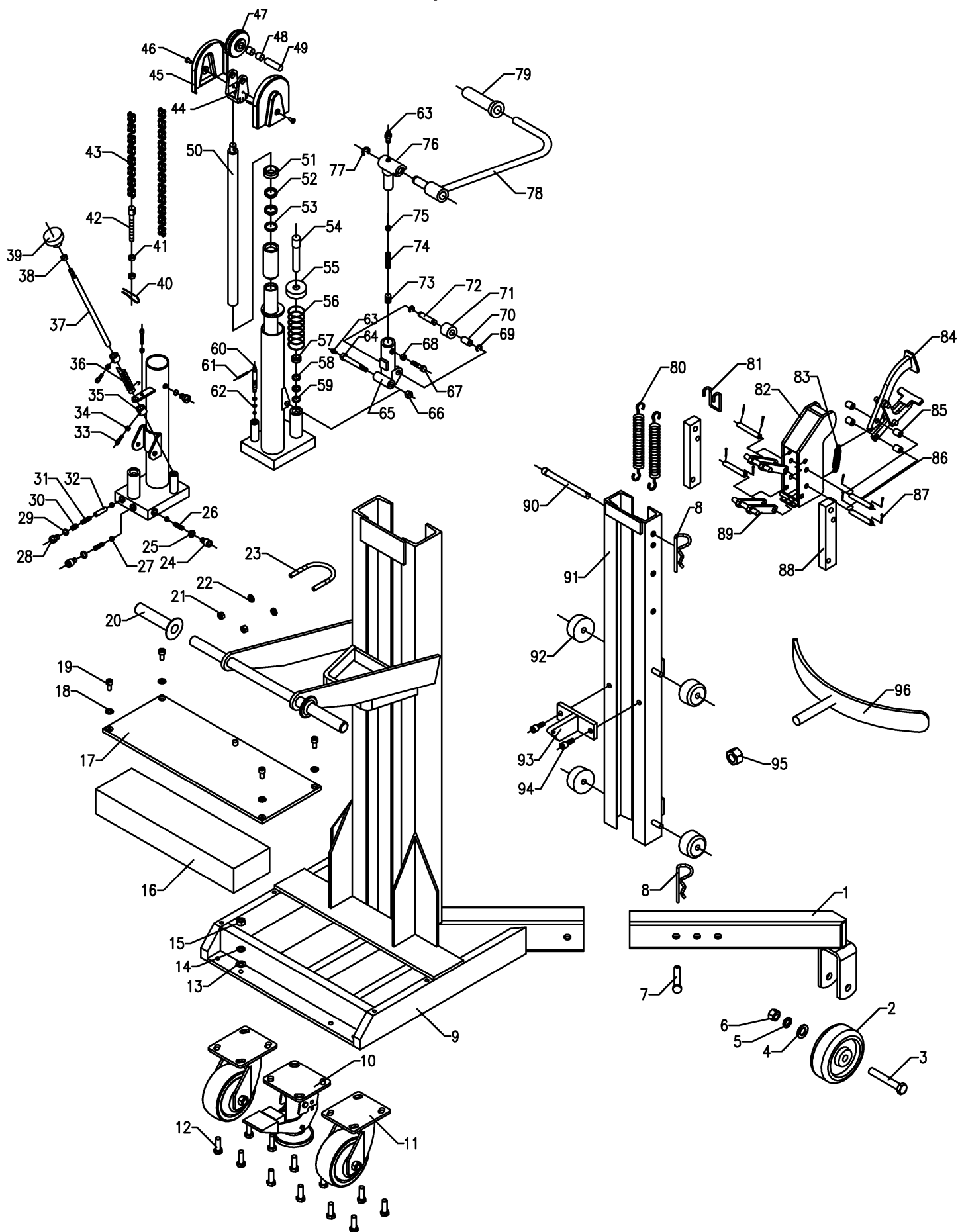
PARTS LIST

No.	Description	Qty	No.	Description	Qty	No.	Description	Qty
1	Leg fork	2	33	Inside hex screw	2	65	Seat	1
2	Front wheel	2	34	Hex nut	2	66	Nut	1
3	Hex bolt	2	35	Locating ring	2	67	Bolt	1
4	Washer	2	36	Torsional spring	1	68	Nut	1
5	Cover	4	37	Unitary valve rod	1	69	Split ring	2
6	Lock Nut	2	38	Hex nut	1	70	Bearing	1
7	Pin	2	39	Handle	1	71	Ring	1
8	R pin	3	40	U pin	1	72	Pin axle	1
9	Base track assy.	1	41	Nut	2	73	Adjusting screw	1
10	Brake	1	42	Chain bolt	1	74	Spring	1
11	Back wheel	2	43	Roller chain	1	75	Steel ball	1
12	Bolt	12	44	Chain wheel base	1	76	Sheath	1
13	Washer	12	45	Chain cover	2	77	Split ring	1
14	Split washer	12	46	Screw	2	78	Lever	1
15	Nut	12	47	Chain wheel	1	79	Rubber sheath	1
16	Block	2	48	Oil-free bearing	2	80	Spring	2
17	Cover board	1	49	Chain wheel pin	1	81	Hook	1
18	Washer	4	50	Plunger rod	1	82	Shell body	1
19	Bolt	4	51	Dust proof ring	1	83	Pulling spring	1
20	Rubber sheath	2	52	O-ring	2	84	Upper&Lower hook	1
21	Nut	2	53	Nylon washer	1	85	Space ring	4
22	Washer	2	54	Pump rod	1	86	Connecting pin	4
23	U bolt	1	55	Pump cover	1	87	Cotter pin	8
24	Inside hex screw	2	56	Pump ring	1	88	Connecting block	2
25	Copper washer	2	57	Dust proof ring	1	89	Connecting rack	1
26	Taper spring	2	58	O-ring	2	90	Pin axle	1
27	Steal ball	4	59	Nylon washer	1	91	Supporting frame assy.	1
28	Screw plunger	2	60	Valve core	1	92	Roller wheel	4
29	O-ring	2	61	Pin	1	93	Chain locking board	1
30	Locking screw	1	62	O-ring	2	94	Screw	2
31	Spring	1	63	Oil cup	2	95	Adjustable nut	1
32	Short pin	1	64	Pin axle	1	96	Bracket	1

NOTE: Parts list for illustration purposes

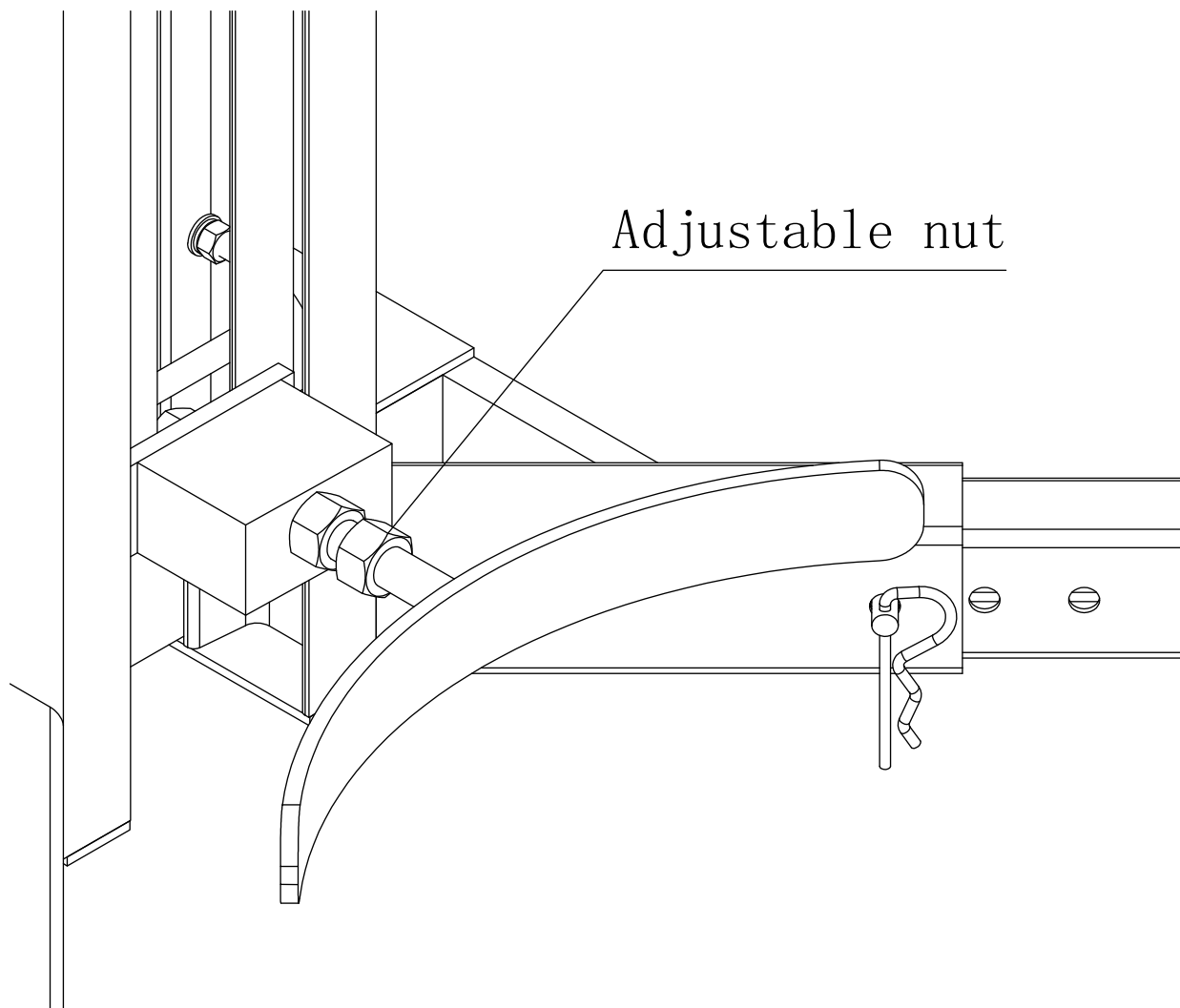
Hydraulic Drum Handler w/ Universal Grip and adjustable support

Exploded View



Hydraulic Drum Handler w/ Universal Grip and adjustable support

Adjustable Bracket

**To extend the bracket:**

Loosen the adjustable nut and turn the bracket counter-clockwise until the bracket is at the desired length. Tighten the nut to lock the bracket in place.

To shorten the bracket:

Loosen the adjustable nut and turn the bracket clockwise until the bracket is at the desired length. Tighten the nut to lock the bracket in place.