

Installation

E19-310AC

Combination Drench Shower and Eye/Face Wash

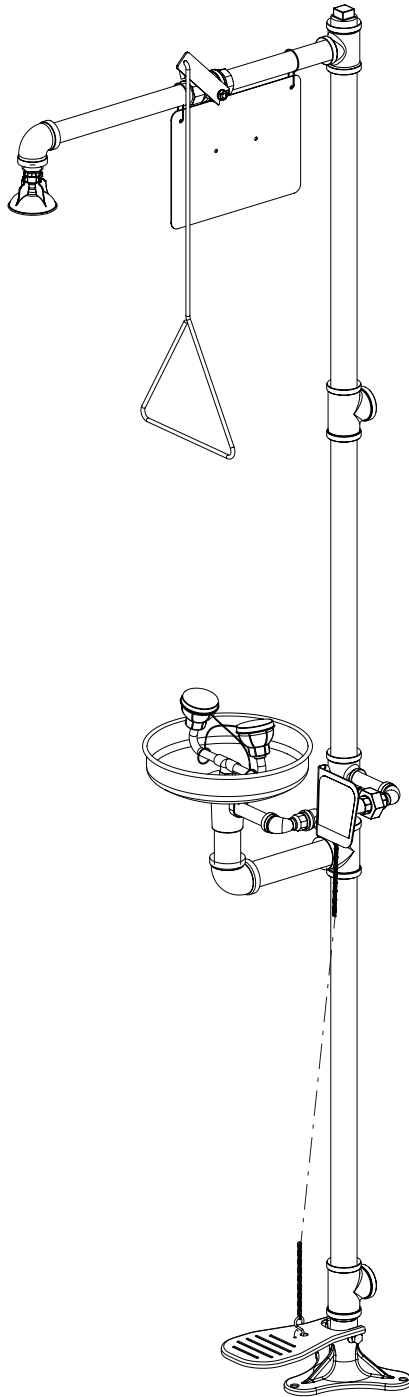
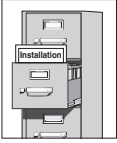


Table of Contents

Pre-Installation Information	2
Installation Instructions	3
Assembly of Components	4
Parts List	5

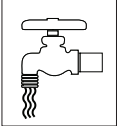
IMPORTANT



Read this installation manual completely to ensure proper installation, then file it with the owner or maintenance department. Compliance and conformity to drain requirements and other local codes and ordinances is the responsibility of the installer.



Separate parts from packaging and make sure all parts are accounted for before discarding any packaging material. If any parts are missing, do not begin installation until you obtain the missing parts.



Flush the water supply lines before beginning installation and after installation is complete. Test the unit for leaks and adequate water flow. Main water supply to the eyewash should be "ON" at all times. Provisions shall be made to prevent unauthorized shutoff.



The ANSI Z358.1 standard requires an uninterrupted supply of flushing fluid. Bradley plumbed emergency fixtures require a minimum of 30 PSI (0.21 MPa) flowing pressure. Flushing fluid should be tepid per ANSI Z358.1.



The inspection and testing results of this equipment should be recorded weekly to verify proper operation. This equipment should be inspected annually to ensure compliance with ANSI Z358.1.



Workers who may come in contact with potentially hazardous materials should be trained regarding the placement and proper operation of emergency equipment per ANSI Z358.1.

For questions regarding the operation or installation of this product, visit www.bradleycorp.com or call 1-800-BRADLEY.



Product warranties and service parts information may also be found under "Products" on our web site at www.bradleycorp.com.

Installation

NOTICE! Avoid cleaners containing organic solvents, alcohols, and hydrocarbons. Rinse with water after cleaning.

Supplies Required:

- (3) M10 floor anchors and bolts
- Teflon tape and pipe sealant
- Piping to 1¼" BSP water supply inlet and 1¼" BSP drain outlet on unit
- Adequate supply pipe supports
- Minimum 102mm (4") drain to accommodate 115 liters (30 gallons) per minute discharge for shower waste
- OPTIONAL: sign-mounting hardware



Local codes may require the installation of a backflow prevention valve to complete proper installation. Compliance with local codes is the responsibility of the installer. Valve must be tested annually to verify that it is functioning properly. Backflow prevention valves are not included with the fixture and may be supplied by the contractor or purchased from Bradley Corporation.

Step 1: Secure base to floor

1. Install three suitable anchors (supplied by installer) for M10 bolts in the floor.
2. Bolt the base to the floor anchors using M10 bolts (supplied by installer).

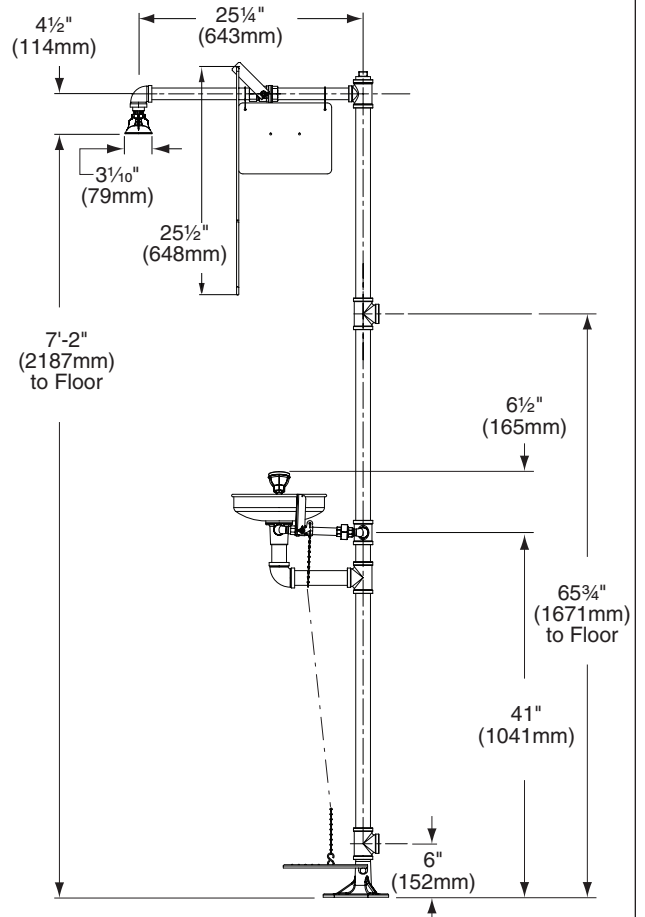
Step 2: Assemble components

1. Assemble the remaining unit components as shown on page 4.
 - Apply pipe sealant (by installer) to all male-threaded pipe joints.
 - Use the rubber grip pad provided or a strap wrench around pipes when tightening to prevent marring. Place the grip pad on the pipe, then put the wrench over the grip pad and turn the pipe with the wrench.
 - When connecting the steel chain, first connect the chain to the "S" hook on the foot treadle. Then, with the foot treadle raised up, straighten the chain and connect a link to the "S" hook on the valve handle. Make sure chain is pulled tight. The length of chain will vary.
 - Bottom edge of the showerhead should be 7'-2" (2187mm) from floor.

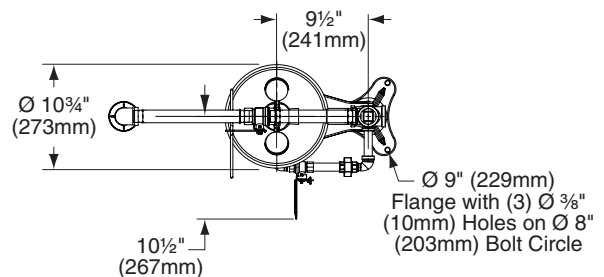
Step 3: Connect water supply

IMPORTANT: Do not rely on Bradley's Combination Unit to support supply piping.

1. Connect water supply piping to 1¼" BSP inlet on unit (piping by installer). Provide adequate supports (by installer) for supply pipe using pipe hangers or other means.
2. Connect drain piping to 1¼" BSP drain outlet on unit (piping by installer).
3. Hang the safety sign from the unit with the curtain hooks provided (or mount it to the wall using sign-mounting hardware by installer).

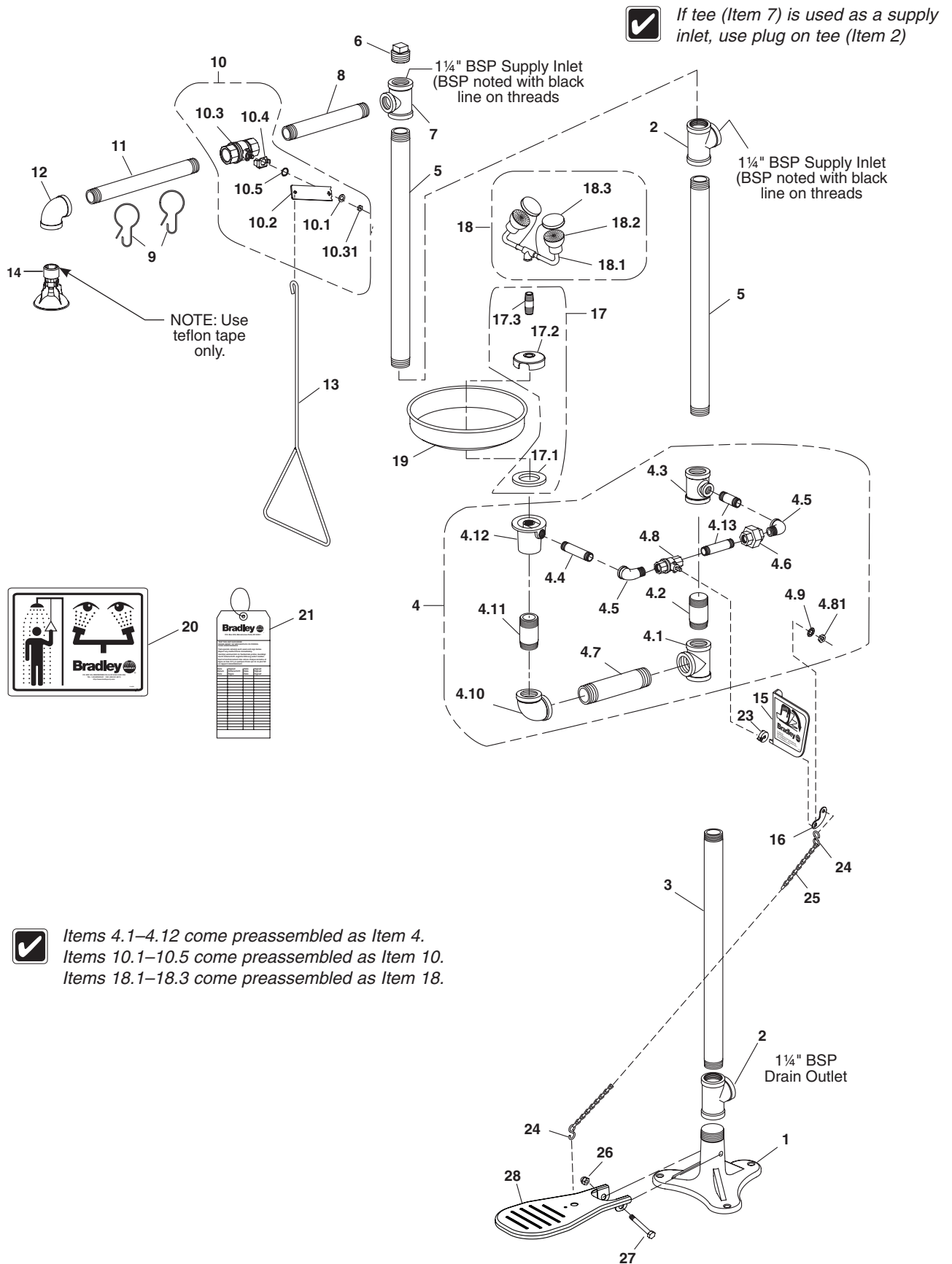


Top View From Bowl



All dimensions assume standard thread engagement. Variations in manufacturing allow for +/- 3mm (1/8") per threaded joint. To find the tolerance of a dimension, add the number of thread joints in between a dimension and multiply it by 3mm (1/8").

Assembly of Components



Parts List

Item	Part No.	Qty.	Description
1	131-059	1	Base
2	169-727B	2	Pipe Tee 1¼" NPT & BSP
3	113-006LC	1	Pipe 1¼" NPT x 699mm
4	S39-226	1	Europe Eyewash Sub-Assy.
4.1	169-727	1	Pipe Tee 1¼" NPT
4.2	S06-136	1	Plugged Nipple 1¼" NPT x 76mm
4.3	169-841	1	Reducing Tee
4.4	113-006LQ	3	Pipe ½" NPT x 89mm
4.5	169-025	2	Street Elbow
4.6	169-726	1	Union 1/2" Female NPT
4.7	113-006QX	1	Pipe 1¼" NPT x 180mm
4.8	S27-282	1	½" Ball Valve with Nut
4.81	110-215	1	Jam Nut only
4.9	142-002DA	1	Lockwasher
4.10	169-764	1	90° Pipe Elbow 1¼" NPT
4.11	113-006LE	1	Pipe Nipple 1¼" NPT x 76mm
4.12	111-039	1	Drain Inlet/Outlet
5	113-006LW	2	Pipe 1¼" NPT x 572mm
6	169-724	1	Pipe Plug 1¼" NPT
7	169-722B	1	Reducing Tee w/ BSP end
8	113-006LL	1	Pipe 1" NPT x 229mm
9	151-001	2	Curtain Hook
10	S30-059	1	Stay-Open Ball Valve Assembly 1" NPT
10.1	142-002DC	1	Lockwasher
10.2	128-129	1	Handle
10.3	S27-278	1	1" Ball Valve with Nut
10.31	110-214	1	Jam Nut only
10.4	140-720	1	Stop Bracket
10.5	124-048	1	Washer, Friction

Item	Part No.	Qty.	Description
11	113-006LK	1	Pipe 1" NPT x 305mm
12	169-847	1	90° Elbow 1" NPT
13	128-156A	1	Pull Rod - 24" Long
14	S24-188	1	Plastic Showerhead Assy.
15	S08-368	1	Handle Assy.
16	128-136	1	Lever Arm
17	S45-1789	1	Cup/Strainer Prepack
17.1	124-028	1	Center Seal Gasket
17.2	173-009	1	Cup Strainer
17.3	113-1150	1	Supply Pipe
18	E05-064D	1	EFW Assy.
18.1	S05-091P	1	Eyewash Yoke
18.2	S45-2453	1	Service Kit EFW - Black Sprayheads
18.3	S53-063	2	Dust Cover Assy.
19	187-053	1	S.S. Eyewash Receptor
20	114-052E	1	Safety Sign
21	204-421	1	Emergency Tag
22	269-915	1	Grip Pad (not shown)
23	153-372R	1	Adapter
24	269-646	2	"S" Hook
25	134-009D	1	Stainless Steel Chain
26	161-163	1	Nut
27	160-382	1	Screw
28	181-014	1	Treadle