



Model: DE840D

Dual Articulating TV/Monitor Gas Spring Grommet/Clamp Desk Mount (Myth Series)

Instruction Manual



Weight Capacity: 4kg(8.8lbs)-8kg(17.6lbs)
Suits LCD Flat Panel Display: up to 24"

Dyconn

382 N Lemon Ave #122
Walnut, CA 91789
T: (855) 239-2666
F: (626) 333-8575
www.dyconn.com

Dual Articulating TV/Monitor Gas Spring Grommet/Clamp Desk Mount (Myth Series)

Model: DE840D

Instruction Manual

Images may differ from actual product

Disclaimer

It is Dyconn's intention to have all the correct information present within this manual. Although we try our best, Dyconn makes no claim that the information comprised herein covers all conditions or details in connection with installation or use of this product. Dyconn assumes no responsibility for accuracy or adequacy of information comprised in this document. The information comprised here is subject to change without notice or obligation of any kind.

WARNING

- This warning informs you of the possibilities of personal injury or damage to equipment if you do not follow the corresponding instructions. It is the installer's responsibility to make sure all components are properly assembled and installed using the instruction manual provided.
- Using improper screws or screw sizes may damage your display. If spacers are required, be sure to use screws of the correct size. Proper screws used will easily and completely thread into the display mounting holes. Inadequate thread engagement in the display may cause display to fall.
- It is the installer's responsibility to make sure the combined weight of all components does not exceed the weight capacity of 17.6lbs (8kg). Exceeding weight capacity can result in severe personal injury or damage to equipment.
- Allowing any part of your component cables to be caught between movable parts can result in serious personal injury or damage to equipment.
- The table being used for installation must be stable and strong enough to support the DE840D mount and display.

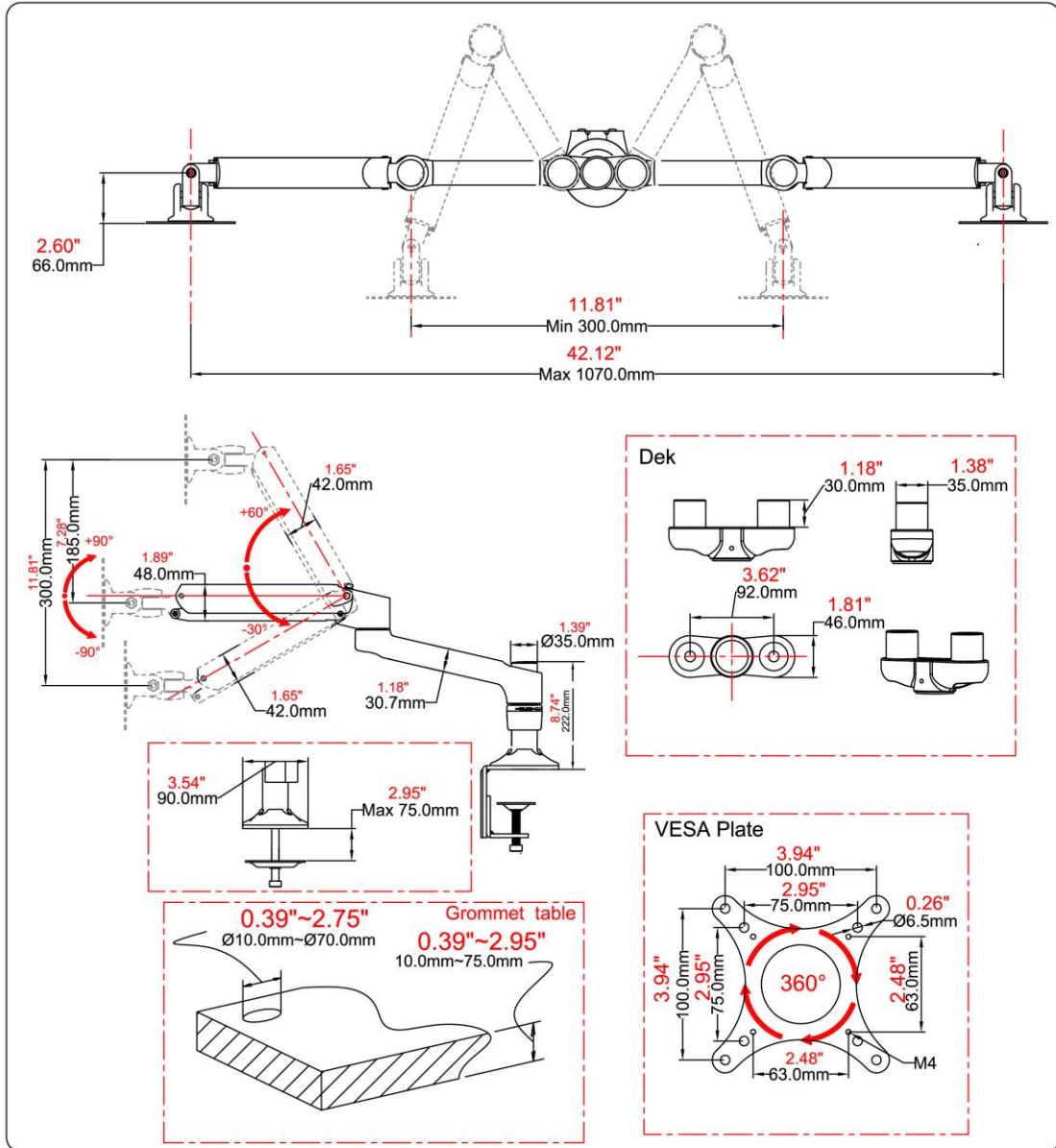
Please Read the following before installing

- Verify all parts are included. Do not install if the products or hardware are damaged or missing. Not all hardware included will be used.
- Please contact a qualified installer.
- This product contains moving parts, use with caution.
- Determine approximate location before installing and keep in mind the display size, arm extension, height adjustment and pitch / roll requirements.
- This product contains small items; please keep these items away from children.
- Do not exceed the maximum weight capacity for this product. Exceeding the weight capacity can result in serious personal injury or damage to equipment.

Specifications

Weight Capacity	8.8lbs(4kg)~17.6lbs(8kg)
Suits LCD Flat Panel Displays	Up to 24”(610mm)
Maximum Extension	22.05”(560mm)
Depth from Pole (Closed)	2.6”(66mm)
Tilt adjustment	+/-90 degree
Swivel adjustment	+/- 90 degree
Pivot (Desk / Display / Arm)	360 / 180 /360 degree
VESA Compatibility	75x75mm and 100x100mm
Maximum Mounting Surface Thickness	Clamp-2.95” (75mm) Grommet-2.95” (75mm)

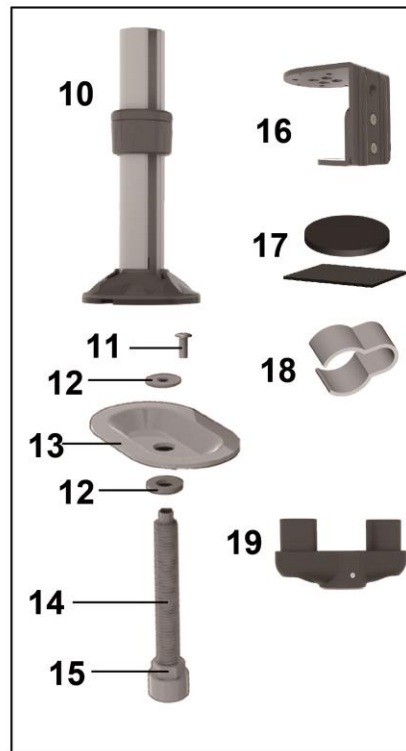
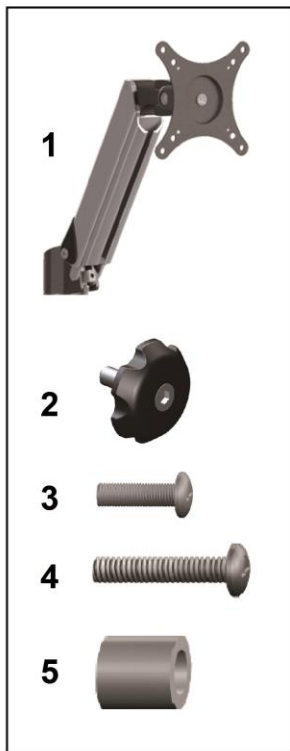
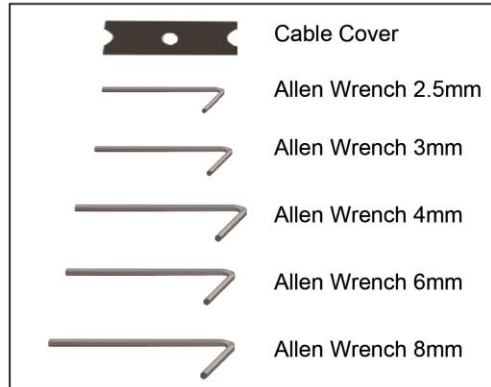
Product Dimension



Supplied Parts

REF	PART NAME	QTY
1	Gas Spring Arm	2
2	Knob	8
3	Philips Screw M4X12mm	8
4	Philips Screw M4X25mm	8
5	Spacer	8
6	Extension Arm	2
7	Cover	4
8	Washer	4
9	Philips Screw M6x12mm	4
10	Pole	1
11	Screw	3
12	Washer	1
13	Pressure Plate	1
14	Bolt	1

REF	PART NAME	QTY
15	Nut	1
16	L Connect Plate	1
17	Gasket Cushion	4
18	Cable Clip	1
19	DEK	1



Required Tools



ASSEMBLY and INSTALLATION

INSPECT THE MOUNT BEFORE ASSEMBLY

1. Carefully inspect/verify that all components are present.
2. If the mount/components are damaged or missing, please contact the company/seller of the product you purchased this from and report the issue.

Note: Read all assembly instructions before starting the installation process.

Step 【1】 Installation of Desk Clamp

WARNING

Do not over-tighten screws. Stop immediately when you encounter any resistance.

Note: A Phillips screwdriver may be needed to complete the following steps.

Note: We recommend installing the desk clamp or grommet near the edge or towards the rear of the desktop surface. Desk clamps should be installed on square-edged desks only. It is the installer's responsibility to ensure that the desktop can support the total weight of the mount.

Installation method:

1. Unscrew and remove the grommet plate using the provided 3mm Allen wrench (**See Figure 1-1**).

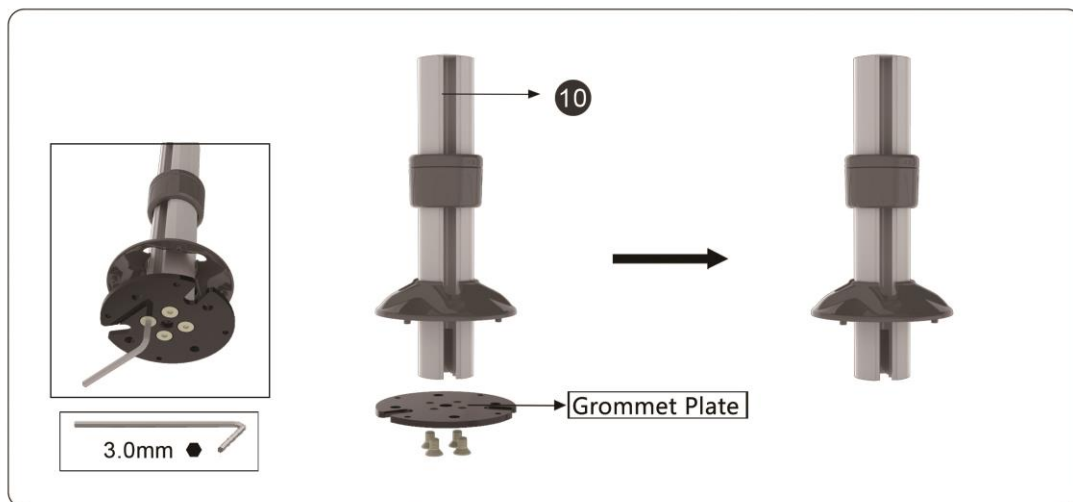


Figure 1-1

2. Unscrew and remove the smaller L plate using the provided 4mm Allen wrench. Attach the mounting pole to the larger L plate and tighten the four screws using the provided 3mm Allen wrench (**See Figure 1-2**).

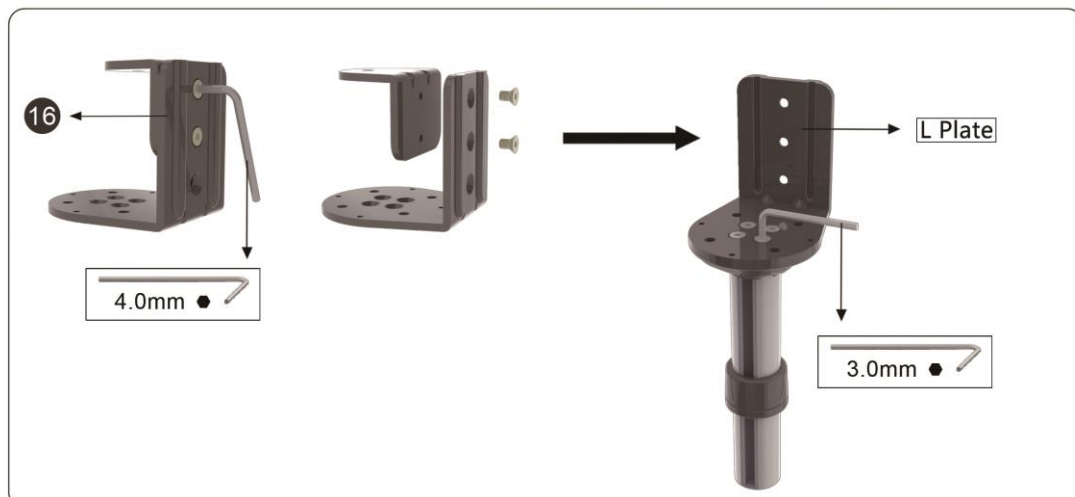


Figure 1-2

3. Attach the four gasket cushions (17) to the base of the larger L plate (See Figure 1-3).

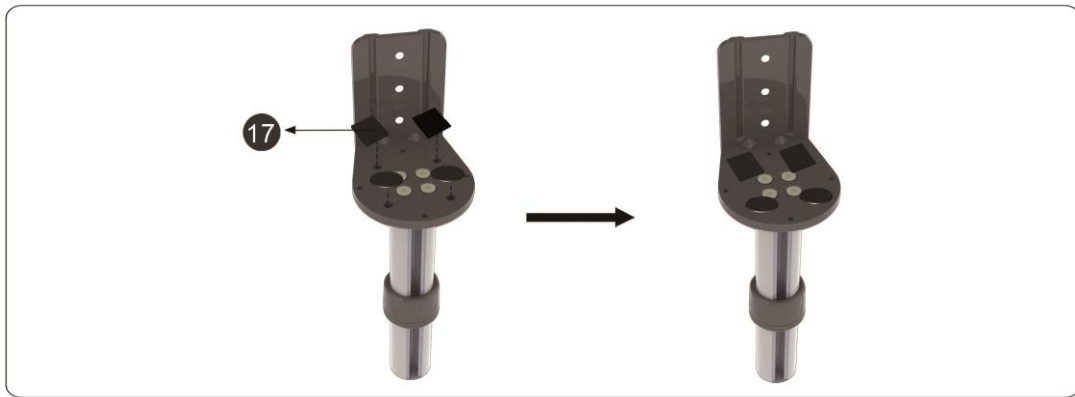


Figure 1-3

4. Combine the components of the pressure plate (items 11-15, see page 5). Using a Phillips screw driver, attach the pressure plate to the smaller L plate. Then proceed to attach the smaller L plate to the larger L plate using the provided 4mm Allen wrench (See Figure 1-4).

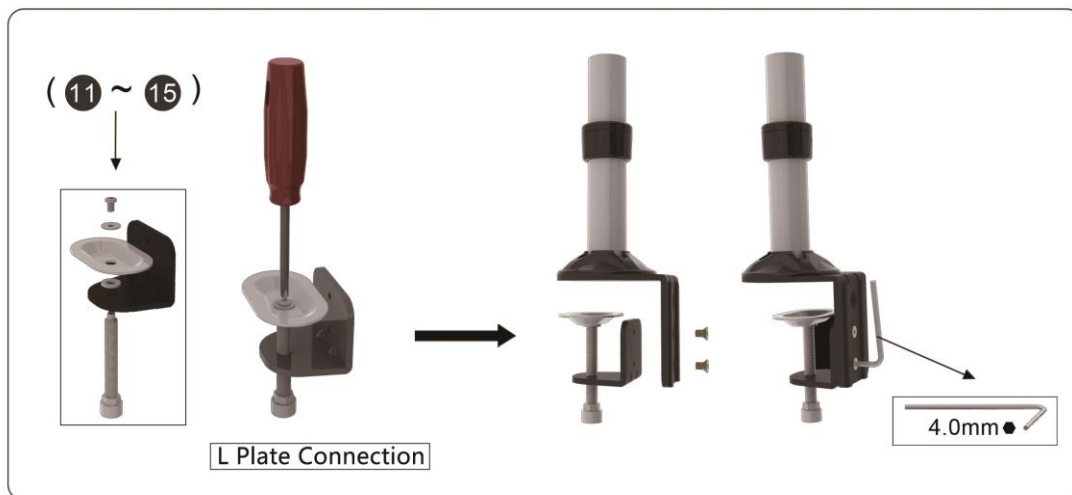


Figure 1-4

5. Place the desk clamp towards the edge of the desktop. Ensure the pressure plate is in contact with the bottom surface of the desk. Using the 8mm Allen wrench, tighten the hex screw until the mount is securely in place (**See Figure 1-5**).

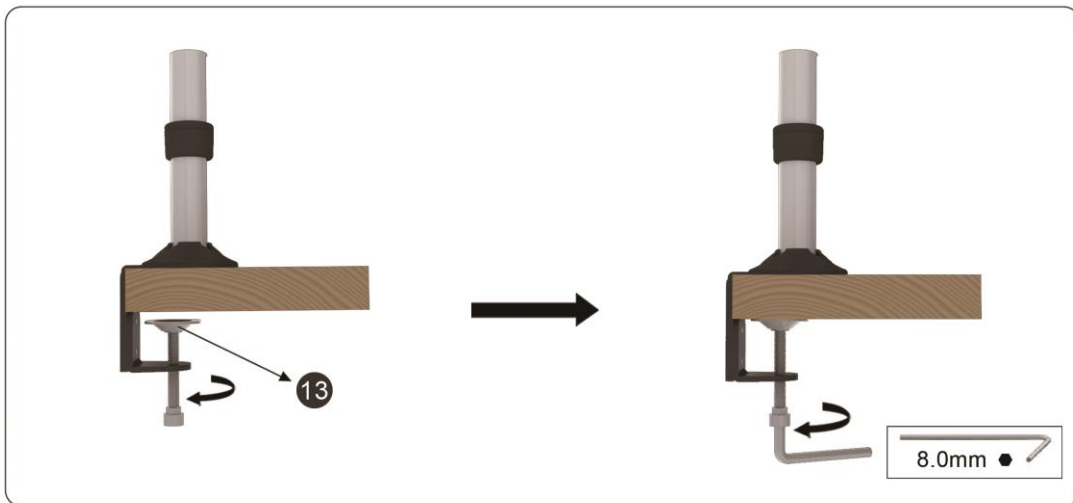


Figure 1-5

6. Loosen the collar and adjust to the desired height. Tighten the collar until it is firmly in place (**See Figure 1-6**).

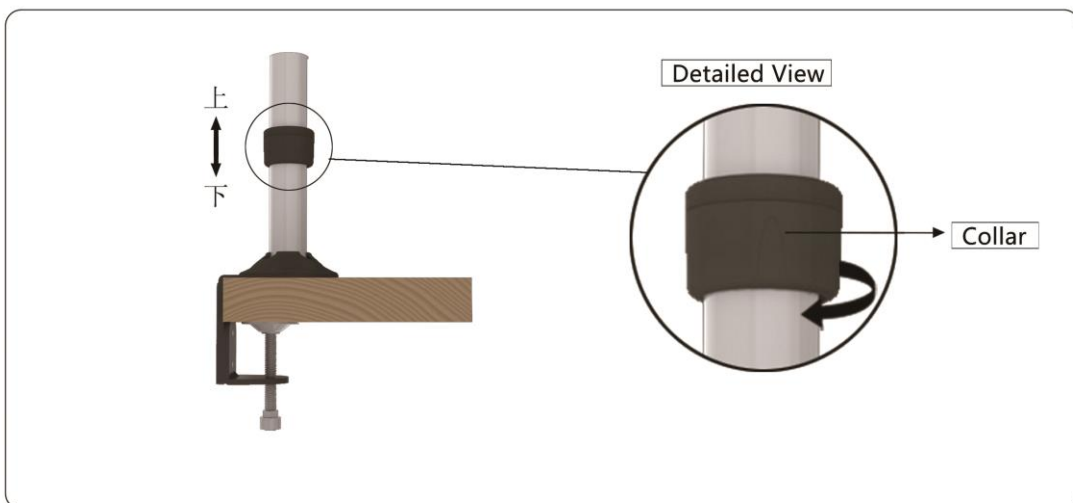


Figure 1-6

Step 【1】 Installation: Grommet

WARNING

Do not over tighten the Handle. Stop immediately if you encounter any resistance.

Note: Other tools may be required depending on your method of installation.

Installation method:

1. Attach gasket cushions (17) to the grommet plate (See Figure 1-7).

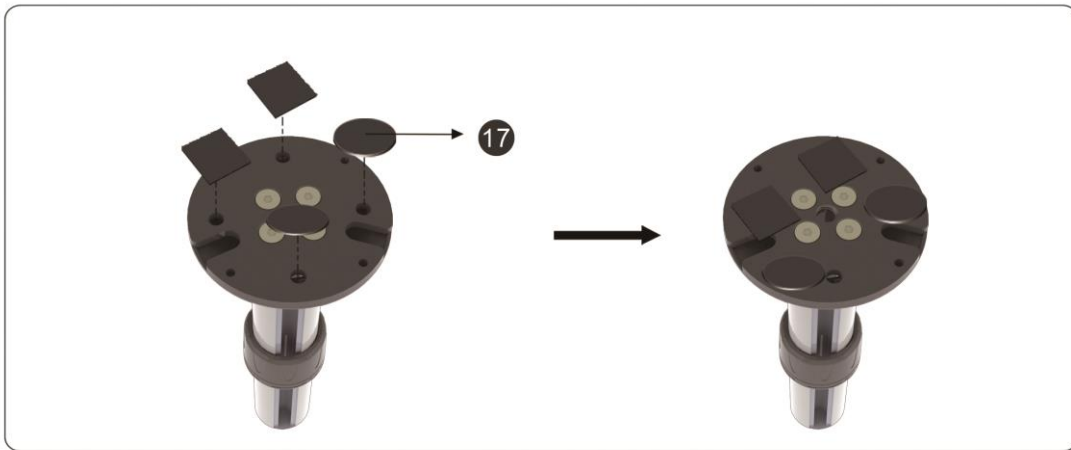


Figure 1-7

2. Place the grommet over the cable management hole. Thread the pressure plate screw into the bottom of the grommet plate and proceed to tighten with the provided 8mm Allen wrench. Tighten until the mounting pole is firmly in place (See Figure 1-8).

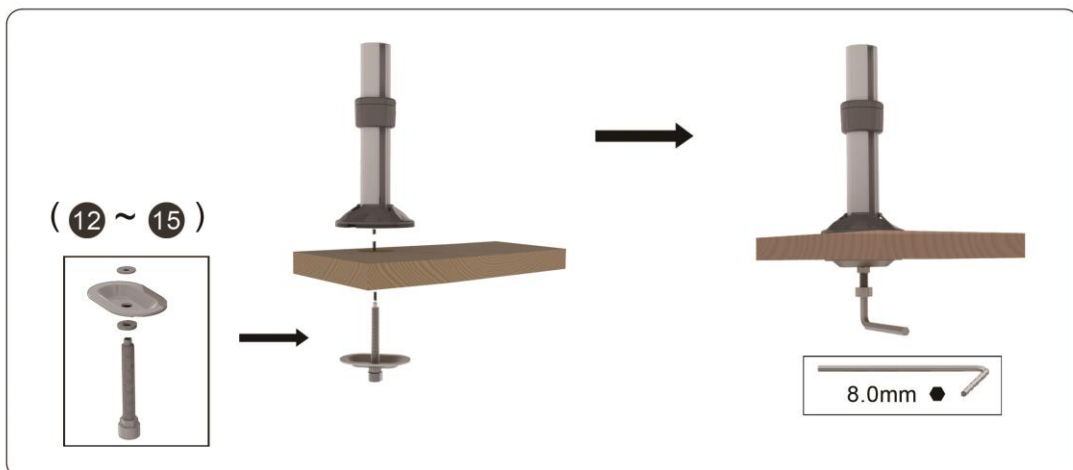


Figure 1-8

Step **【2】**

Display Installation

⚠ WARNING

Using improper screws or screw size may damage your monitor. If spacers are required, be sure to use screws of the correct size. Proper screws will easily and completely thread into the monitor mounting holes. Inadequate thread engagement in the monitor may cause the monitor to fall.

⚠ WARNING

It is the installer's responsibility to make sure the combined weight of all components does not exceed the weight capacity of 17.6 lbs (8kg). Exceeding weight capacity can result in severe personal injury or damage to equipment.

⚠ WARNING

Gas Spring Arm will only work when a monitor is properly installed.

Attaching the Display

1. Ensure the VESA bracket can swivel and tilt easily (**See Figure 2-1**). If necessary, adjust the tension before proceeding to the next step.

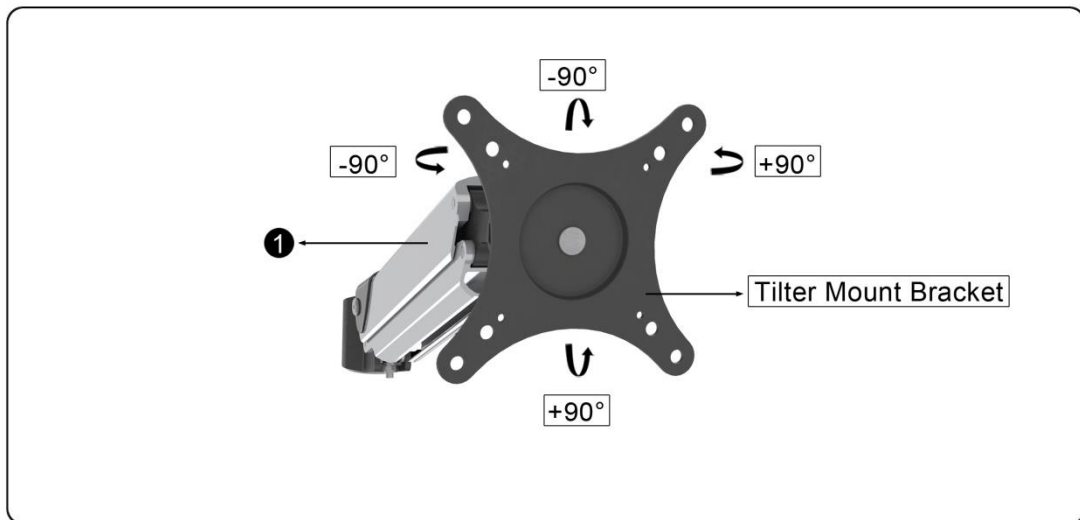


Figure 2-1

2. Carefully place the monitor face down on protective surface (**See Figure 2-2**).

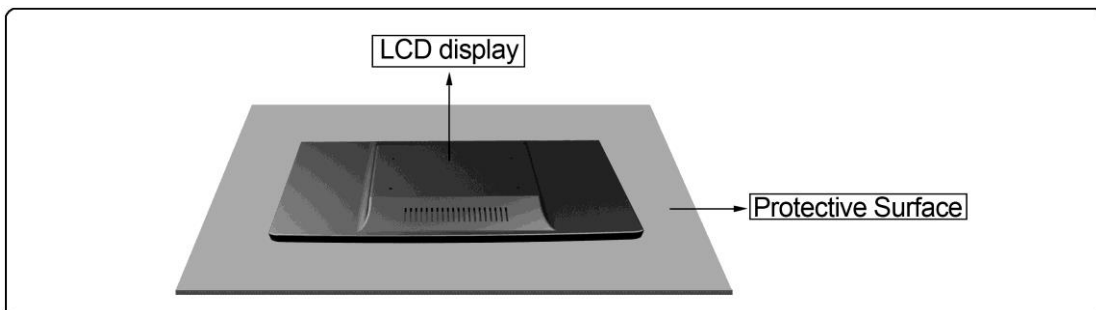


Figure 2-2

3. Determine depth of recessed mounting holes relative to the back of the surface of the monitor and select proper length of Screws (2, 3, 4).
4. Place the gas spring arm on the back of the display and align the mounting holes with the VESA bracket. Thread the proper screws (2, 3, 4) through the VESA bracket and into the back of the monitor (See Figure 2-3).

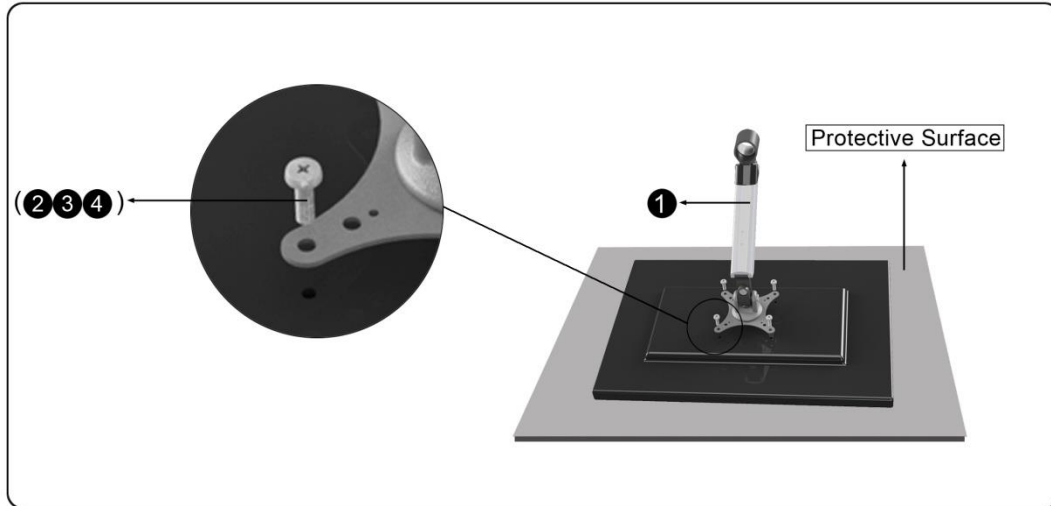


Figure 2-3

5. Using a Phillips screwdriver, tighten the screws until the VESA bracket is firmly attached to the monitor. Do not over-tighten the screws. Stop immediately once you encounter resistance (See Figure 2-4).

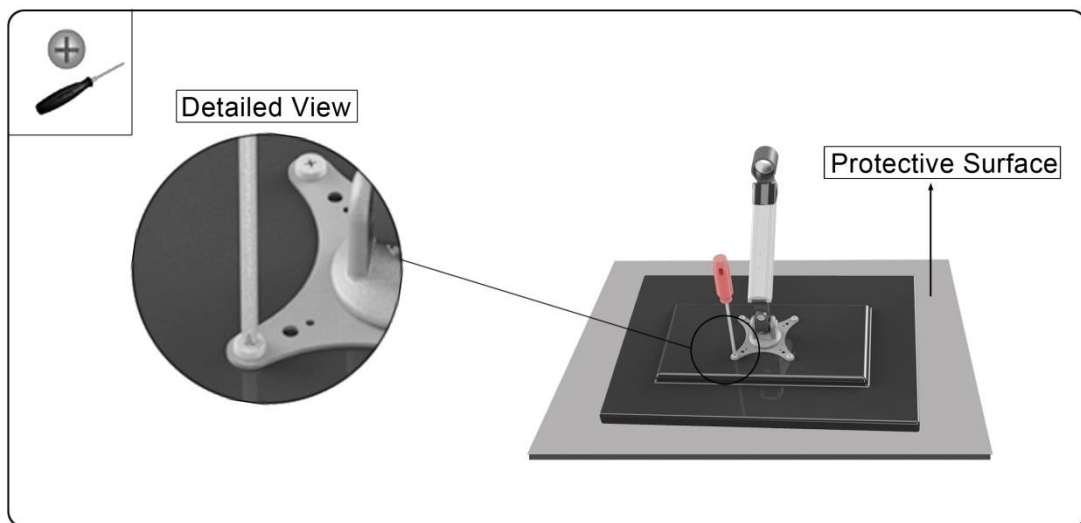


Figure 2-4

Step **【3】** Attaching Gas Spring Arm Assembly

⚠️ WARNING

The DE840D Desk Mount will only work when properly installed.

Attaching the Gas Spring Arm Assembly

1. Install the DEK (19) onto the mounting pole. Using the provided 2.5mm Allen wrench, securely fasten the DEK to the mounting pole (See Figure 3-1).

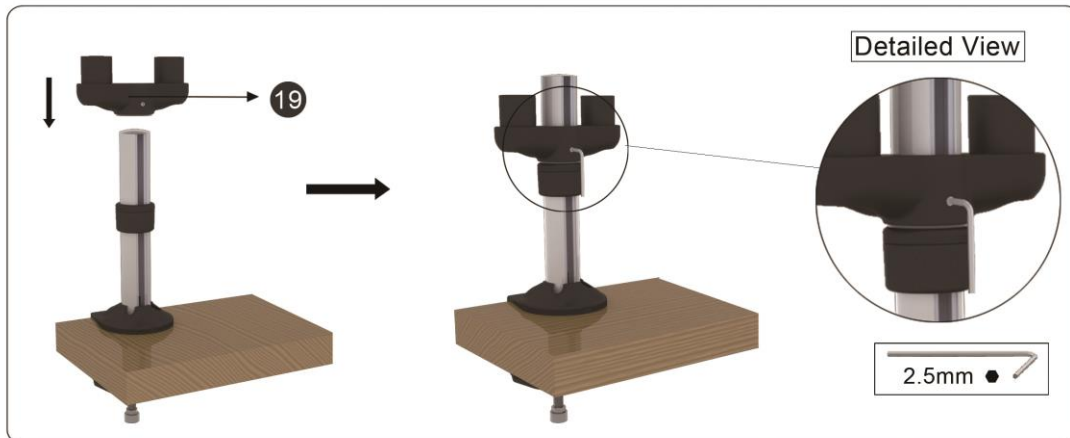


Figure 3-1

2. Install extension arms (6) onto the DEK (See Figure 3-2).

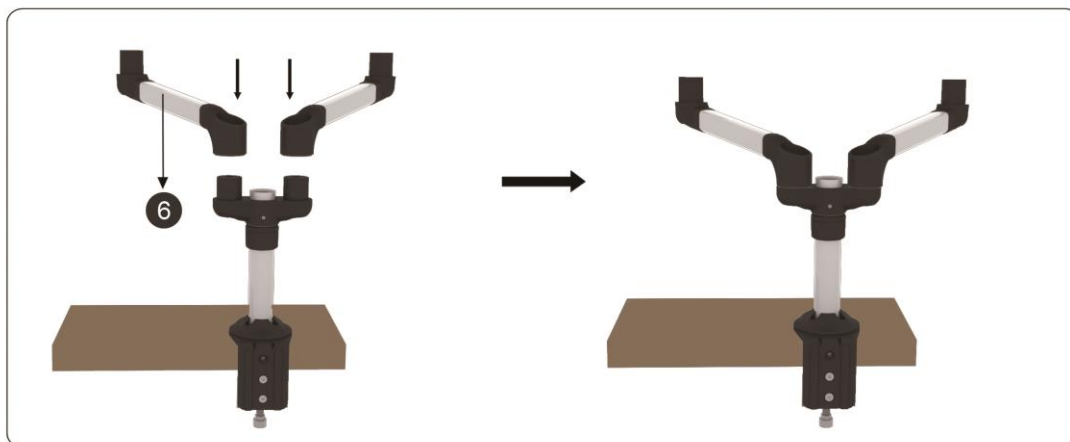


Figure 3-2

- Place the arm covers (7) on the pivot points and secure with the M6x12mm Phillips screws (9) and washers (8) (See Figure 3-3). Do not over tighten the screw. The arm cover is used to help secure the extension arm.

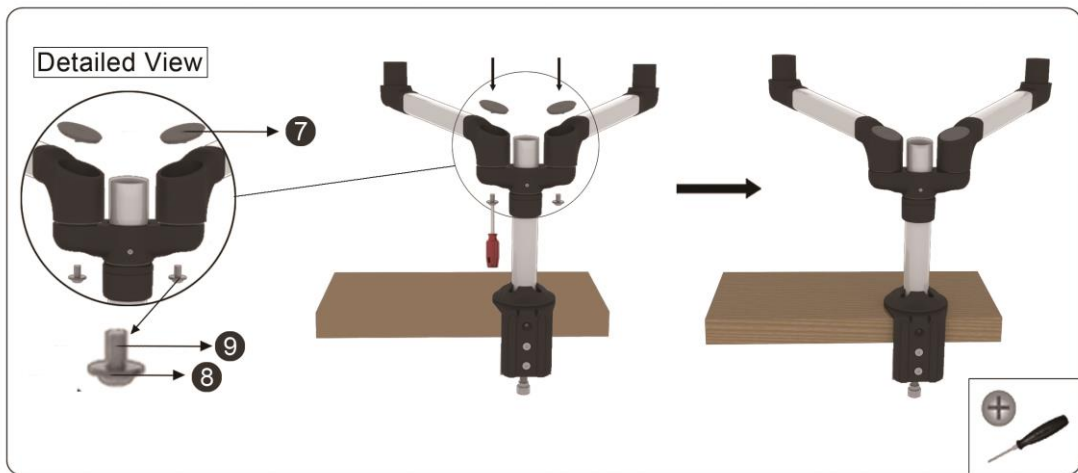


Figure 3-3

- Install the gas spring arms onto the extension arms. Place the arm covers (7) on the pivot points and secure with the M6x12mm Phillips screws (9) and washers (8) (See Figure 3-4). Do not over tighten the screw. The arm cover is used to help secure the extension arm.

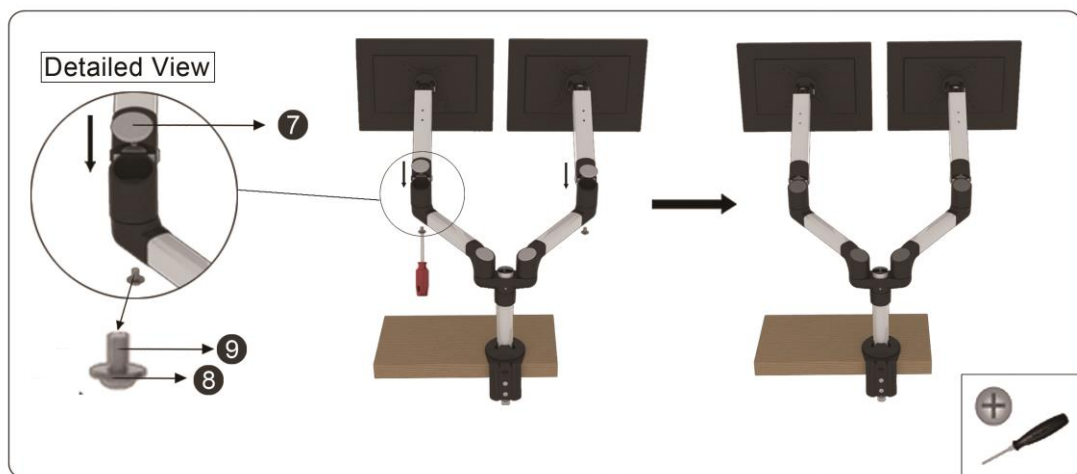


Figure 3-4

Step 【4】

Cable Management

⚠️ WARNING

Ensure that the gas spring arm is fully extended before connecting the cables.

⚠️ CAUTION

Exercise caution when attaching or removing the display to avoid personal injury or damage to equipment. Disconnect power before removing the display.

Note: Be sure to leave enough slack in the cables to allow for movement of the arms.

Installing Cable Management

1. Adjust the arms to its fully extended position to ensure that the cables are not stretched or pulled when the monitor is moved. Connect cables to monitor (**See Figure 4-1**).
2. Feed the cables through the underside of the arms and push them into the cable entry slots. Then proceed to install the cable covers to secure the cables (**See Figure 4-2**).

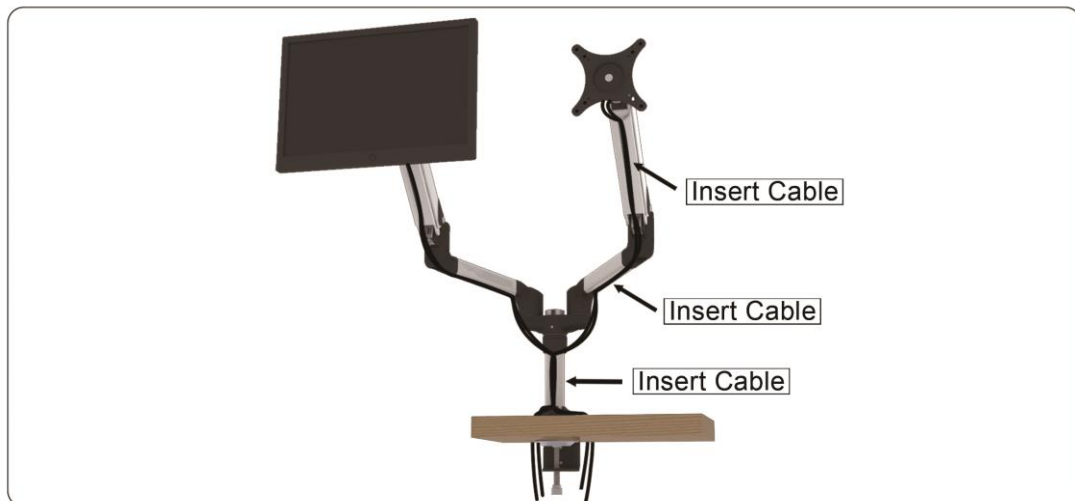


Figure 4-1

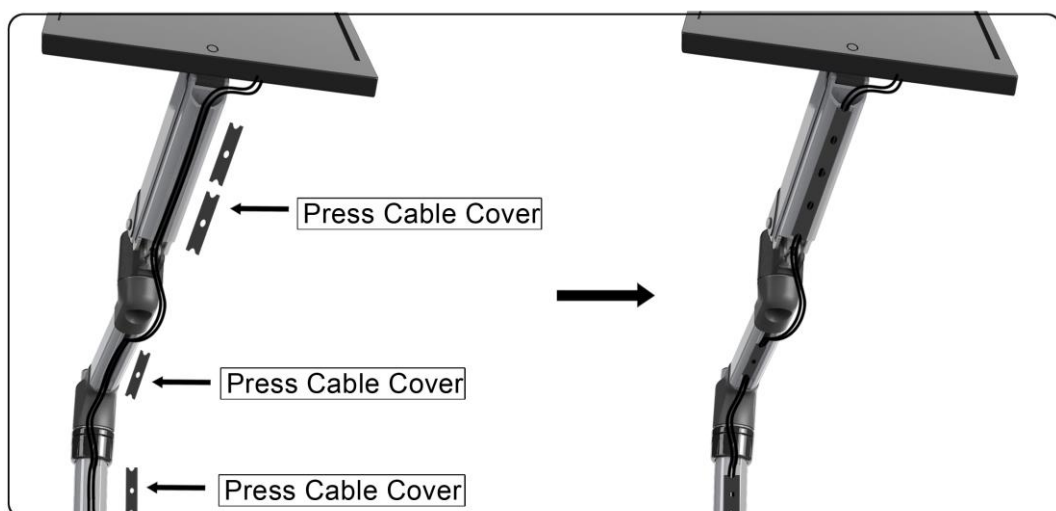


Figure 4-2

3. Attach the cable clip (18) to the mounting pole (See Figure 4-3).

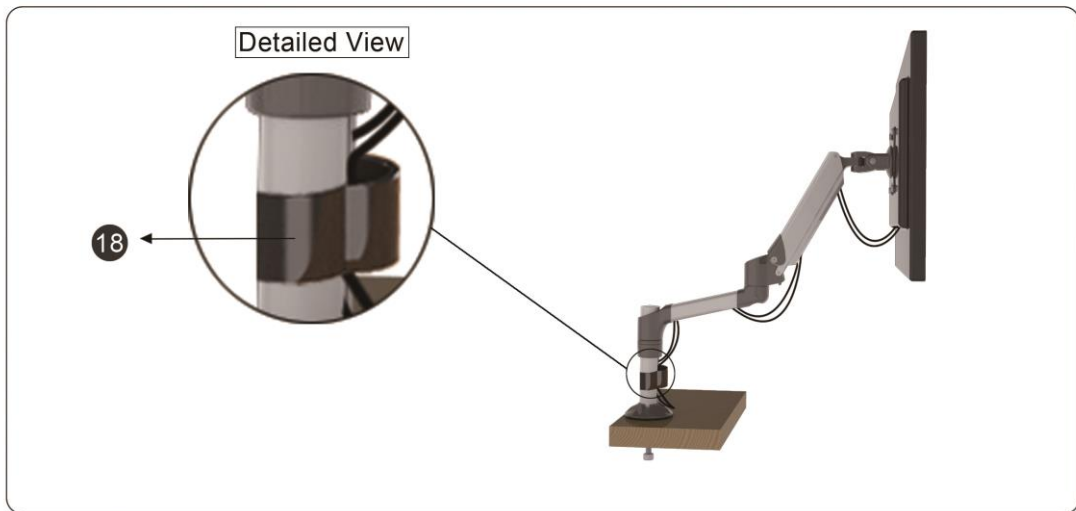


Figure 4-3

Step 【5】

Adjusting the Display Monitor

⚠️ WARNING

Forced movement of the gas spring arm or VESA bracket may damage the unit. Before adjusting, disconnect the power of the monitor to avoid excess damage. As you make the necessary adjustments, ensure that the monitor is supported and the proper screws are loosened.

⚠️ CAUTION

Exercise caution when adjusting the monitor to avoid damage to equipment. Disconnect power before removing the monitor.

Note: The gas spring arms come factory set to support 8 kg (17.6 lbs) monitors. Be sure to adjust the arms to suit the weight of the monitors.

Adjusting the Arm's Resistance

1. Depending on the weight of the monitors, the resistance on the gas spring arms may need to be adjusted. To make the necessary adjustments, loosen/tighten the tension screws located at the corners of the articulating arms using the provided 4mm Allen wrench (**See Figure 5-1**).

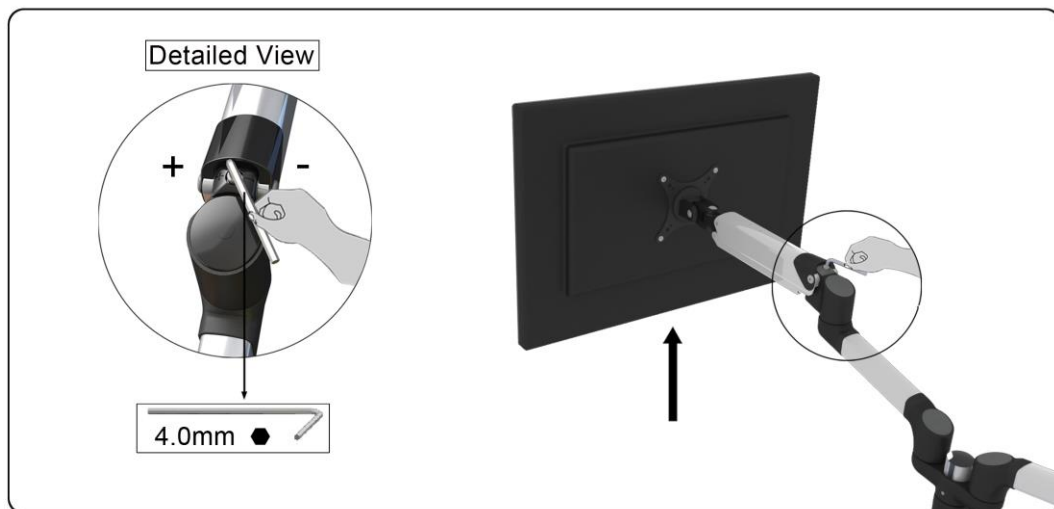


Figure 5-1

Adjusting the Bracket's Resistance

- To adjust the resistance on the VESA bracket, use the provided 6mm hex Allen wrench to loosen or tighten the hex screw until you have reached your desired position (See Figure 5-2).

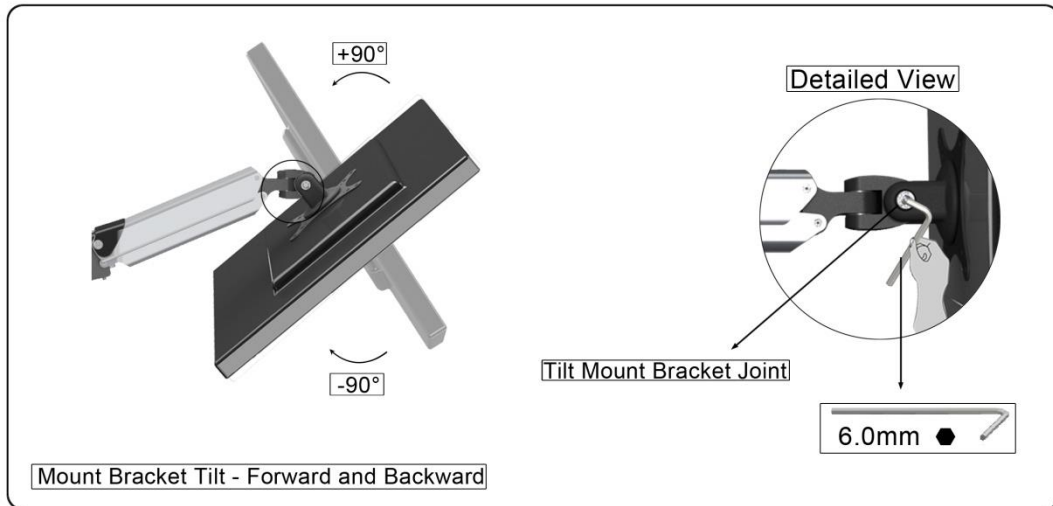


Figure 5-2

- This product features $\pm 90^\circ$ Swivel (See Figure 5-3).

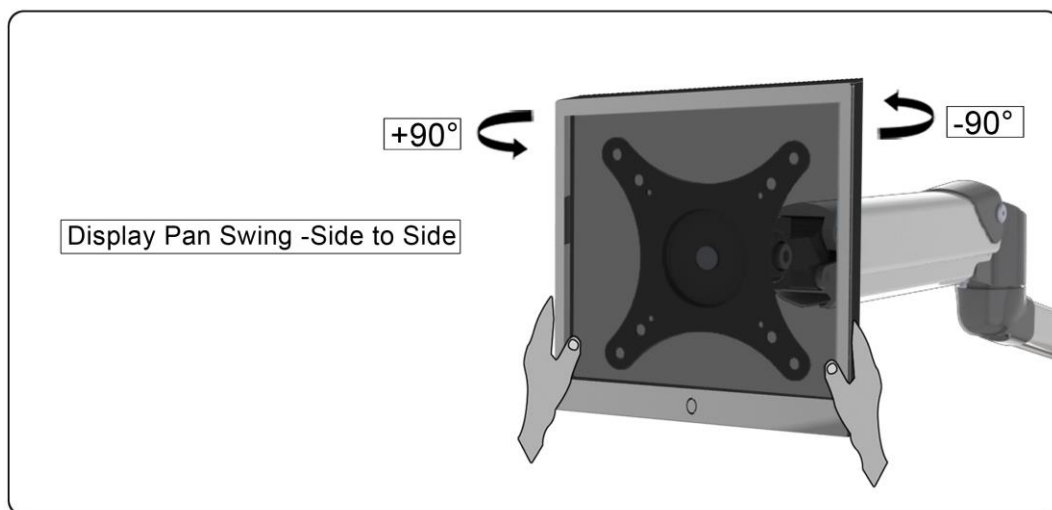


Figure 5-3

4. To adjust the height, remove the gas spring arm from the mounting pole. Loosen the collar on the mounting pole and adjust to your desired height. Then proceed to reattach the gas spring arm. (See Figure 5-4).

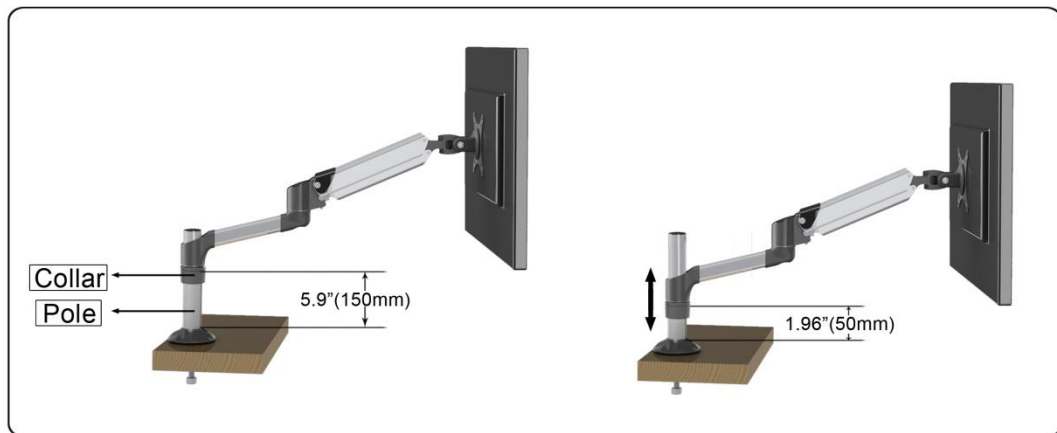


Figure 5-4

5. The gas spring arm can lift up 60° and down 30° (See Figure 5-5). At the mounting pole, the arm can rotate 360° as well as the pivot point on the extension arm. At the VESA bracket the monitor can pivot 180° (See Figure 5-6).

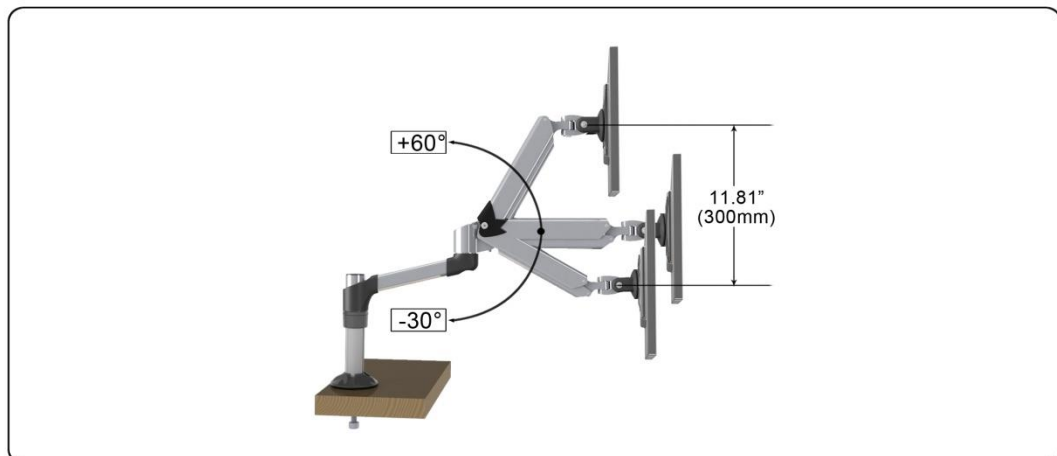


Figure 5-5

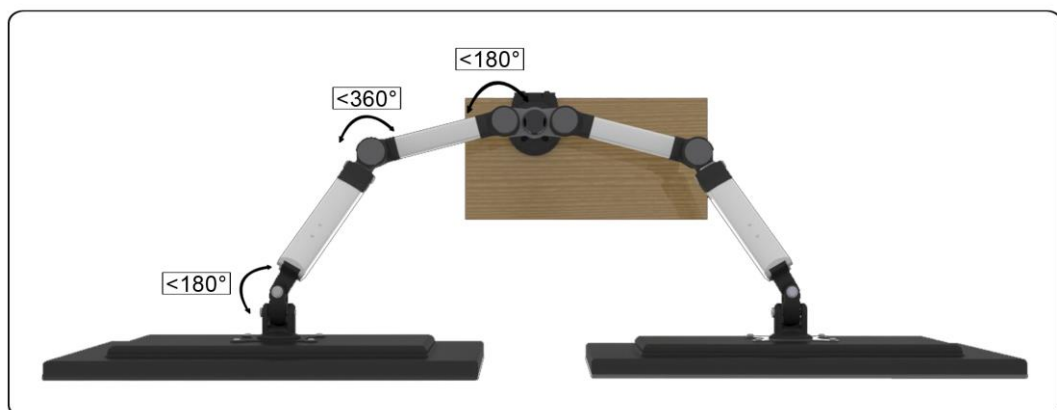


Figure 5-6

Step 【6】 Ergonomic Guidelines

Note: Proper ergonomic design is necessary to prevent repetitive strain injuries, which can develop over time and can lead to long-term disabilities.

1. To ensure the correct focal distance for ultimate visual comfort, a viewing distance between 460mm (18") to 610mm (24") is recommended. **(See Figure 6-1).**

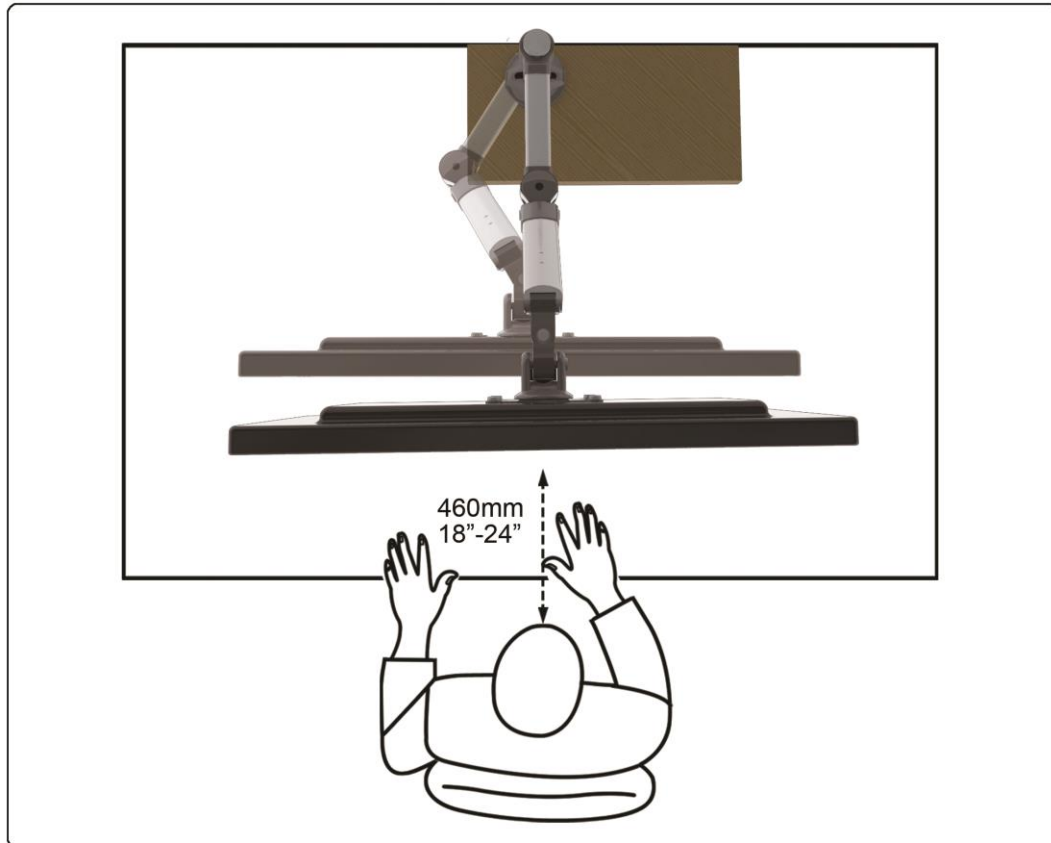


Figure 6-1

2. Agronomists recommend that the proper screen position should be slightly below eye level. The suggested viewing angle should be approximately 10-20° downward onto the center of the screen. The lumbar (bottom five vertebrate in the spine) needs to be supported to decrease disc pressure. Using a chair that provides lumbar support is critical in preventing excessive pressure on the lower back. The proper ergonomic seating position requires the wrists to be straight and a 90° seat and knee angle. To reduce reflection on your screen, tilt the monitor forward or backwards 5 to 15° (See Figure 6-2).

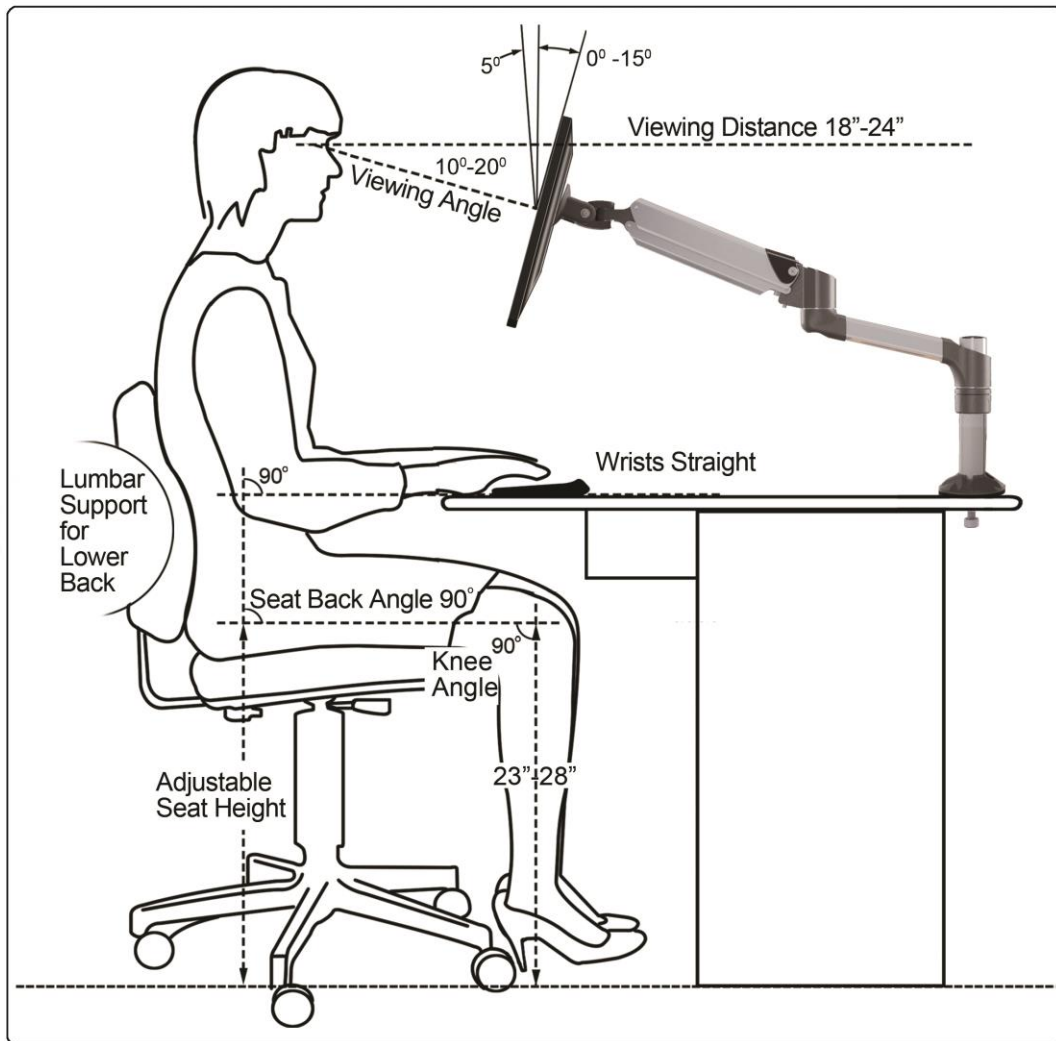


Figure 6-2

DYCONN PRODUCT WARRANTY

To obtain warranty service, contact Dyconn customer service at (855) 239-2666 or visit www.dyconn.com. Dyconn disclaims any liability for modification, improper installations, or installations over specified weight range. Dyconn will not be liable for any damages arising out of the use of, or inability to use of Dyconn products. Warranty specification is subject to change without prior notice.