



CRIBBING SUPPORT BLOCKS

JACK PLATE PRODUCT RANGE



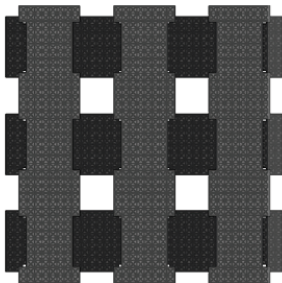
KEY SELLING FEATURES:

- 100% recycled plastic
- Unmatched strength – stronger than wood
- Resistant to gas, oil, and chemicals
- Certified tested
- 50 year warranty against splitting, rot, fluid, absorption, termites, or mold caused by the environment
- Made in the USA

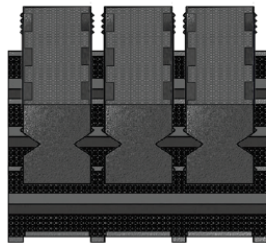
HOW DO THEY WORK?

- Bottom layer of Super Stacker cribbing should be solid to spread the load, especially on soil or asphalt paving.
- Limit height to 3 times width (shortest width for non-square cribs).
- Overlap corners by 4 inches to assure slow crush-type failure.
- Using AME Jack Plates will prevent marring and damage caused by point loading a crib.
- Using AME Locking Jack Plate securely locks crib load during load bearing.

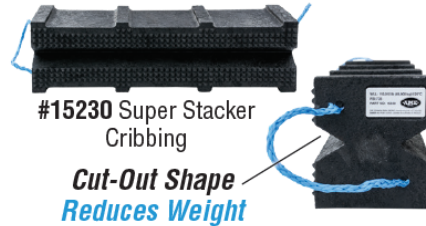
3x3



3x3 SIDE



NEW COLOR-CODED WORKING LOAD LIMIT LANYARDS



High Vis Yellow

Yellow = Light

Total Block Working Load Limit Range
0 kg – 21,000 kg
(0 lbs – 46,297 lbs)

Blue

Blue = Medium

Total Block Working Load Limit Range
21,000 kg – 50,000 kg
(46,297 lbs – 110,231 lbs)

High Vis Orange

Orange = Heavy

Total Block Working Load Limit Range
50,000 kg – 100,000 kg
(110,231 lbs – 220,462 lbs)

Always avoid point source load with any product.

Working Load Limit
Pounds Per Square Inch
AME Part Number

WLL: 129,632 lbs (58,000 kg) @25°C
PSI: 865
PART NO: 15239



FOR TECHNICAL DATA, CONTACT: sales@ameintl.net - 877.755.4263

DANGER: NO POINT SOURCE LOADING OR ALTERING OF PRODUCT

Website Link for Safety Data Sheet

Attribute	Super Stacker	Wood
Lightweight	✓	✗
Maintenance Free	✓	✗
Resistant to Oil, Fuels, and Lubricants	✓	✗
Lab Tested	✓	✗
Environmentally Sound	✓	✗
Certified	✓	✗
Warranty*	✓	✗
Stacking Stability	✓	✗
Individual PSI Rating	✓	✗

*Against splitting, rot, fluid absorption, termites or mold



CRIBBING SUPPORT BLOCKS JACK PLATE PRODUCT RANGE

YouTube
Scan to watch



CRIBBING BLOCKS

- Certified and tested
- Multiple sizes, shapes fit most applications
- Interlocking or aggressive non-slip surface
- Non-conducting plastic resists oil and most chemicals
- Does not splinter, like wood
- Made in the USA

Part No.	#15210 Original Super Stacker Block 4in x 4in x 18in	#15230 Original Super Stacker Block 6in x 7in x 24in	#15239 Primo—Solid Block 6in x 7in x 24in
Dimensions	4" x 4" x 18"	6" x 7" x 24"	6" x 7" x 24"
Lanyard Color	YELLOW	BLUE	ORANGE
Working Load Limit	45,194 lbs (20,500 kg)	110,010 lbs (49,900 kg)	129,631 lbs (58,800 kg)
Weight	7 lbs (3.2 kg)	24.4 lbs (11 kg)	27 lbs (12.2 kg)



JACK PLATES

- Jack plates provide greater stability to bottle jacks, hydraulic rams, jack stands and cribbing
- Durable high density polymer resists the elements and stresses of point loading
- Light-weight and easy to handle with weight-rated colored carrying lanyard
- New Grip-It Jack Plates provide a better grip on uneven terrain in the field
- Made in the USA

Model No.	Length	Width	Thickness	Capacity (Tons)	Surface Side 1	Surface Side 2	Lanyard Color
#14464	12"	12"	1"	50	Smooth	Smooth	BLUE
#14465	12"	12"	1.5"	100	Smooth	Smooth	ORANGE
#14468LT	24"	24"	2"	100	Smooth	Locking	ORANGE
#14466	18"	12"	3"	200	Smooth	Smooth	ORANGE
#14468B	24"	24"	2"	100	Smooth	Pyramid	ORANGE
#14497	12"	12"	2"	100	Smooth	Smooth	ORANGE
#14499	12"	12"	3"	200	Smooth	Smooth	ORANGE
#14500	12"	12"	2"	100	Smooth	Pyramid	ORANGE
#14501	12"	24"	2"	100	Smooth	Pyramid	ORANGE
#14503	27"	24"	2"	100	Pyramid	Locking	ORANGE



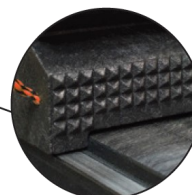
Original AME Jack Plates



NEW Grip-It Jack Plates



BASE JACK PLATE SPECIFICALLY DESIGNED TO LOCK THE CRIB STACK IN PLACE



NEW GRIP-IT JACK PLATES WITH PYRAMID GRIPPING SURFACE