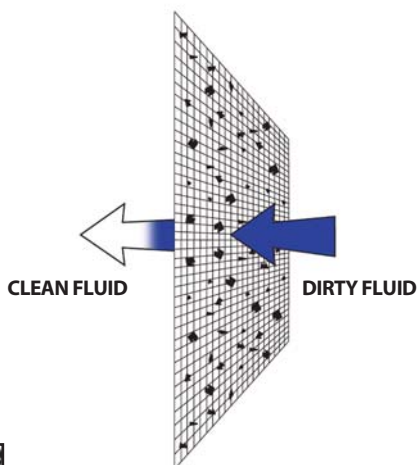


## Standard Mesh Liquid Filter Bags

Monofilament & Multifilament

## Filter Data Sheet

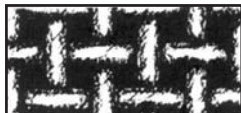
- Micron ratings from 1 to 1500
- All industry standard and custom sizes available
- High flow/low pressure drop media
- Surface-retention filtration
- Wide chemical compatibility
- Sewn construction
- Handles standard on all bags
- Choice of steel ring or plastic flange
- Economical removal of non-deformable contaminants
- Non-fiber releasing
- Good removal efficiencies
- Temperature ratings to 350°F
- Polyester and nylon materials meet FDA regulations for contact under CFR21, section 177.1520
- Silicone-free construction



### Mesh Bag Materials



**Multifilament Mesh** media is woven from threads made of smaller fibers. Bags made from this material are low cost and disposable.



**Monofilament Mesh** is woven from single-fiber threads. The openings are square and uniform. Bags made from this material have excellent strength.

### Mesh Bag Styles

Steel-ring bags have a galvanized steel ring (stainless steel optional) sewn into the top of the bag. They are supplied with sewn seams standard.

Plastic flange bags have a specially-designed flange sewn to the top of the bag. They are supplied with sewn seams standard (welded collars available upon request).

Mesh Materials	Micro Ratings																			
	1	5	10	25	35	45	50	75	100	125	150	175	200	250	300	400	600	800	1000	1500
NMO = Nylon Monofilament	•	•	•	•	•	•	•	•	•	•	•	•	•	•	•	•	•	•	•	•
POMO = Polypropylene Monofilament									•	•	•	•	•	•	•	•	•	•		
NMU = Nylon Multifilament									•	•	•	•	•	•	•	•	•	•		•
PEMU = Polyester Multifilament									•	•	•	•	•	•	•	•	•	•		•

### Ordering Information

Media Type	Micron Rating	Bag Dimensions			Ring / Flange Styles	Options
		Size	Diam.	Length		
NMO = Nylon Monofilament	See Chart	P1 =	7.06"	16.5"	S = Galvanized steel	H = Handle (Standard on all ring style bags)
POMO = Polypropylene Monofilament	See Chart	P2 =	7.06"	32.0"	SS = Stainless steel	EB = Edge binding
NMU = Nylon Multifilament	See Chart	P3 =	4.12"	8.0"	PP = Polypropylene ring	A = Auto seams
PEMU = Polyester Multifilament	See Chart	P4 =	4.12"	14.0"	T = Titanium	TTA = Turn, top stitch, auto seam
		P5 =	4.12"	24.0"	P = AJR-P Flange	RC = Reverse collar
		P7 =	5.50"	15.0"	F = AJR-F Flange	
		P8 =	5.50"	21.0"	OSS = AJR OSS Flange	
		P9 =	5.50"	31.0"	DS = Draw string	
		P11 =	8.50"	16.0"	NR = No ring	
		P12 =	8.50"	32.0"	E = Santoprene	
		C1 =	7.31"	16.5"		
		C2 =	7.31"	32.5"		
		RP-1 =	8.0"	30.0"		
		RP-2 =	8.0"	40.0"		
		PC-1 =	9.0"	20.0"		
		PC-2 =	9.0"	30.0"		
		X1 =	4.35"	8.0"		
		X2 =	4.35"	14.0"		
		XO1 =	6.0"	22.0"		