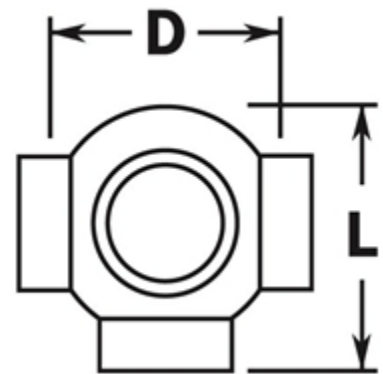
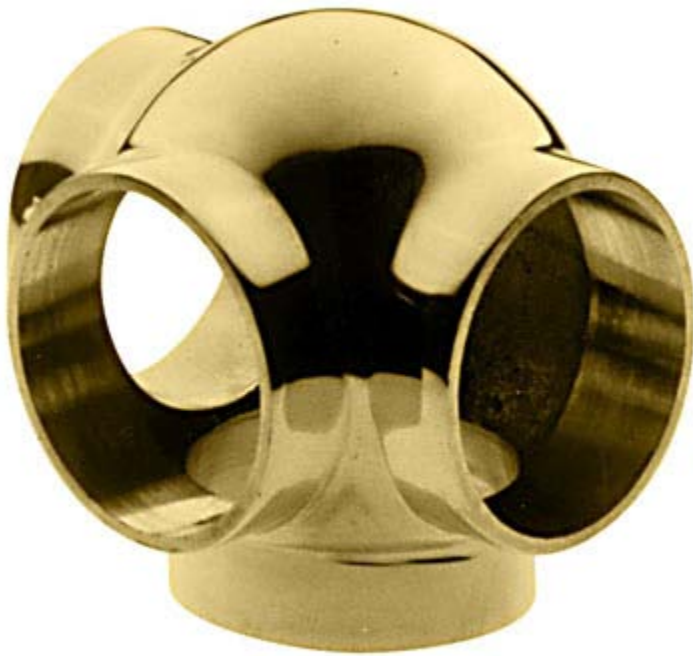


PART# 705/1

Ball Side Outlet Tee for 1" Diameter Tubing



D	2"
L	2-3/16"

MATERIAL	Brass.
AVAILABLE FINISHES	Polished, Satin, Clear Coat, Powder Coat.
INSTALLATION	Insert tube in openings and fix the fitting to the tube using the self drilling screws.
HARDWARE INCLUDED	4 x #8 x 5/8" Philips pan head self drilling screws.
USE TOGETHER WITH	1" OD tube (A100), and matching finials (600/1, 602/1).
AVAILABILITY	Stock item in Valencia, CA & Brewster NY.