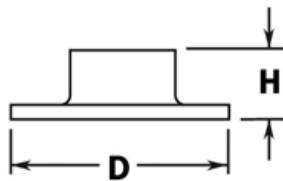


**PART# 530/2**

**4" Wall Flange for 2" Diameter Tubing**



|          |        |
|----------|--------|
| <b>H</b> | 1-1/4" |
| <b>D</b> | 4"     |

**MATERIAL & AVAILABLE FINISHES**

|                   | <b>BRASS</b> | <b>304 SST</b> | <b>316 SST</b> |
|-------------------|--------------|----------------|----------------|
| <b>Polished</b>   | √            | √              | √              |
| <b>Satin</b>      | √            | √              | √              |
| <b>Clear Coat</b> | √            |                |                |

**MATERIAL USAGE**

|                | <b>BRASS</b> | <b>304 SST</b> | <b>316 SST</b> |
|----------------|--------------|----------------|----------------|
| <b>Indoor</b>  | √            | √              | √              |
| <b>Outdoor</b> | √*           |                | √              |

\*Uncoated brass only

**MATERIAL CARE**

|                        |  |
|------------------------|--|
| <b>Brass</b>           | Use Lavi Metal Polish (Item# 00202) and apply with a damp, soft cloth. |
| <b>Stainless Steel</b> | Use metal cleaner and apply with a damp, soft cloth.                   |

**INSTALLATION**

Mount plate to the horizontal surface or wall and matching diameter tube inside the neck. Fix the tube to the neck using the supplied PPH screw.

**HARDWARE INCLUDED**

3 x #12 x 2" Philips flat head screws. 1 x #8 x 5/8" Philips pan head self drilling screw.

**USE TOGETHER WITH**

2" OD tube (A120, A121), matching flush fittings for 2" tube (730/2 series) and matching finials (600/2, 602/2). Can also use with tube and ball fittings.