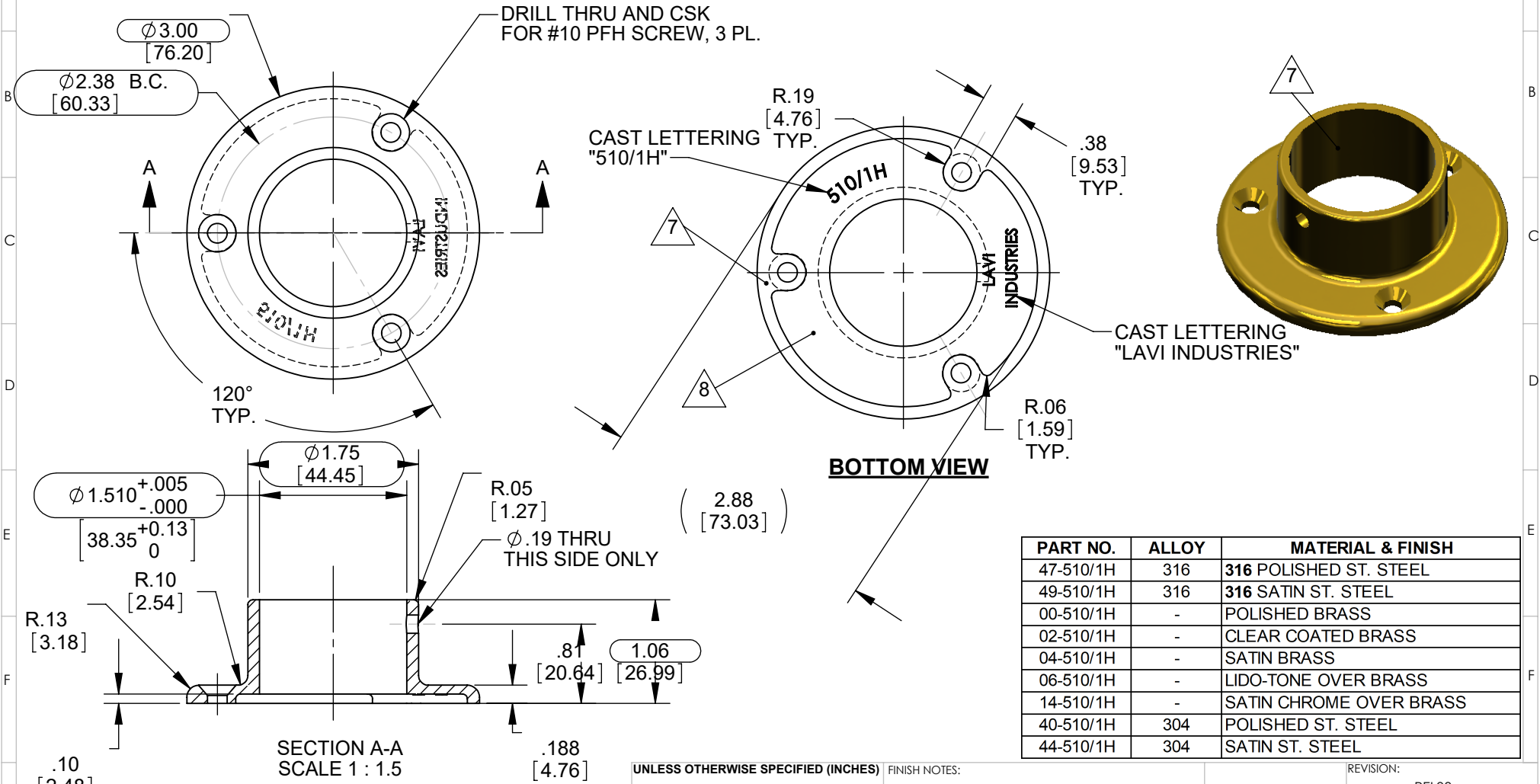


THE INFORMATION CONTAINED IN THIS DRAWING IS THE SOLE PROPERTY OF LAVI INDUSTRIES. ANY REPRODUCTION IN WHOLE OR PART WITHOUT WRITTEN PERMISSION OF LAVI INDUSTRIES IS PROHIBITED.
2010 (c) LAVI INDUSTRIES

| REVISIONS | | |
|-----------|---|-----------|
| REV. | DESCRIPTION | DATE |
| REL02 | ADDED CAST LETTERING "510/1H" TO PART, ADDED 316 ST. STEEL ALLOY PARTS TO TABLE | 3/29/2012 |
| REL03 | .10" WAS .11" | 8/5/2013 |



| PART NO. | ALLOY | MATERIAL & FINISH |
|-----------|-------|-------------------------|
| 47-510/1H | 316 | 316 POLISHED ST. STEEL |
| 49-510/1H | 316 | 316 SATIN ST. STEEL |
| 00-510/1H | - | POLISHED BRASS |
| 02-510/1H | - | CLEAR COATED BRASS |
| 04-510/1H | - | SATIN BRASS |
| 06-510/1H | - | LIDO-TONE OVER BRASS |
| 14-510/1H | - | SATIN CHROME OVER BRASS |
| 40-510/1H | 304 | POLISHED ST. STEEL |
| 44-510/1H | 304 | SATIN ST. STEEL |

UNLESS OTHERWISE SPECIFIED (INCHES)

FRACS. $\pm 1/32$ ANG. $\pm 1^\circ$
.XX ± 0.3 .XXX ± 0.15

ISO 286-2 1988, MACHINING JS 13
FABRICATION JS 16

| | NAME | DATE | SIGNATURE |
|--------|---------|----------|-----------|
| DRAWN | waltons | 8/5/2013 | |
| CHK'D | | | |
| MFG | | | |
| Q.A | | | |
| APPV'D | | | |

FINISH NOTES:

POLISH TO #7 FINISH (EQUIVALENT TO 600 GRIT)

COMMENTS:



LAVI INDUSTRIES
27810 AVENUE HOPKINS
VALENCIA, CA. 91355
Toll Free: (800) 624 6225
Eng Dept: (661) 219 3141

MATERIAL:
Brass

WEIGHT: 0.341

REVISION:

DO NOT SCALE DRAWING

REL03

LAVI INDUSTRIES

TITLE/DESCRIPTION:

FLANGE, WALL, 1.5" x 3"

DWG NO.

XX-510-1H

SCALE: 1:2

SHEET 1 OF 1

NOTES
FINISHED ITEM TO BE FREE FROM FLASH, DISCOLORATION, SINK MARKS OR SHARP EDGES.
IF IN DOUBT PLEASE ASK.
THIS DRG. TO BE READ IN CONJUNCTION WITH 3D CAD DATA FILE.
HARDWARE TO MATCH MATERIAL ALLOY OF PART
HARDWARE: #8 x 5/8" PPH SELF DRILLING SCREW (1 REQ)
HARDWARE: #10 x 1-1/2" PFH SCREW (3 REQ)