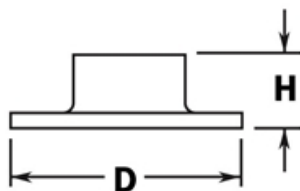


PART# 532/2

5" Floor Flange for 2" Diameter Tubing



H	1-3/8"
D	5"

MATERIAL & AVAILABLE FINISHES			
	BRASS	304 SST	316 SST
Polished	√	√	
Satin	√	√	
Clear Coat	√		

MATERIAL USAGE			
	BRASS	304 SST	316 SST
Indoor	√	√	
Outdoor	√*		
*Uncoated brass only			

MATERIAL CARE	
Brass	Use Lavi Metal Polish (Item# 00202) and apply with a damp, soft cloth.
Stainless Steel	Use metal cleaner and apply with a damp, soft cloth.

INSTALLATION	Mount plate to the horizontal surface or wall and place matching diameter tube inside the neck. Fix the tube to the neck using the supplied PPH screw.
HARDWARE INCLUDED	3 x #12 x 2" Philips flat head screws. 1 x #8 x 5/8" Philips pan head self drilling screw.
USE TOGETHER WITH	2" OD tube (A120), matching flush fittings for 2" tube (730/2 series) and matching finials (600/2, 602/2). Can also use with tube and ball fittings.