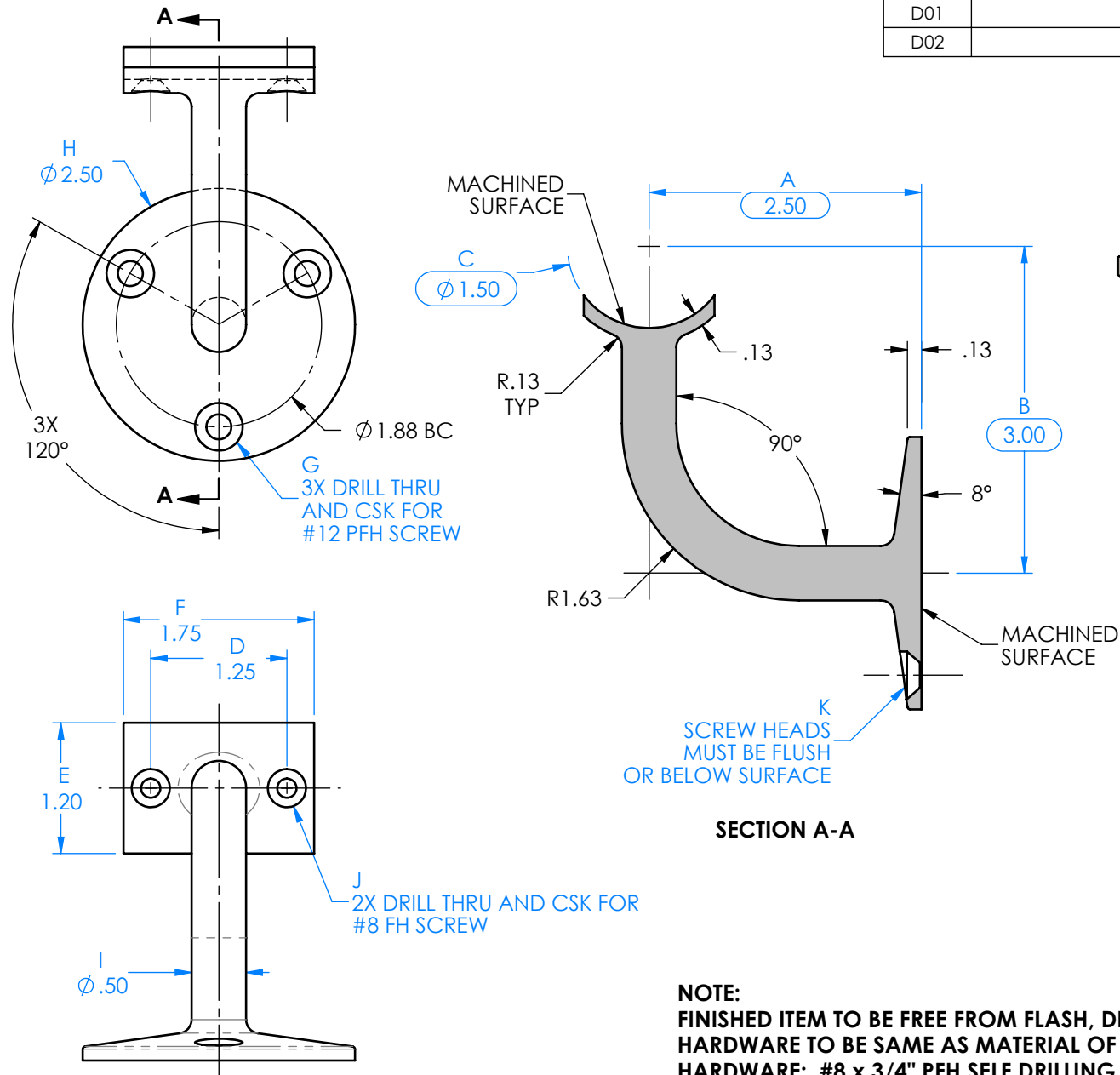


REV.	DESCRIPTION	DATE
D01	RELEASED FOR PRODUCTION	9/21/2023
D02	UPDATED, 3D MODEL	10/4/2023



SECTION A-A

PART #	MATERIAL	FINISH
00-301-1H	BRASS	POLISHED
40-301-1H	304 ST. STEEL	POLISHED
44-301-1H	304 ST. STEEL	SATIN
47-301-1H	316 ST. STEEL	POLISHED
49-301-1H	316 ST. STEEL	SATIN

NOTE:

FINISHED ITEM TO BE FREE FROM FLASH, DISCOLORATION, SINK MARKS OR SHARP EDGES.
HARDWARE TO BE SAME AS MATERIAL OF PART.

HARDWARE: #8 x 3/4" PFH SELF DRILLING SCREW (2 REQ)

HARDWARE: #12 x 2" PFH SCREW (3 REQ)

1. FINISHED ITEM TO BE FREE FROM FLASH, DISTORTION, SINK MARKS OR SHARP EDGES.
2. THIS DRAWING TO BE READ IN CONJUNCTION WITH 3D CAD DATA FILE.
3. TOOL GATES AND EJECTION POINTS TO BE AGREED WITH DESIGNER PRIOR TO TOOLING.
4. PLEASE SEE PO FOR APPROPRIATE FINISH (REQUEST FINISH LEDGER IF NOT INCLUDED)

THE CONFIDENTIAL INFORMATION CONTAINED IN THIS DRAWING IS THE SOLE PROPERTY OF LAVI INDUSTRIES. ANY REPRODUCTION IN WHOLE OR IN PART WITHOUT WRITTEN PERMISSION OF LAVI INDUSTRIES IS PROHIBITED. 2016 (c) LAVI INDUSTRIES

FINISH NOTES:

COMMENTS: **INTERPRET THE DRAWING PER 3D MODEL**