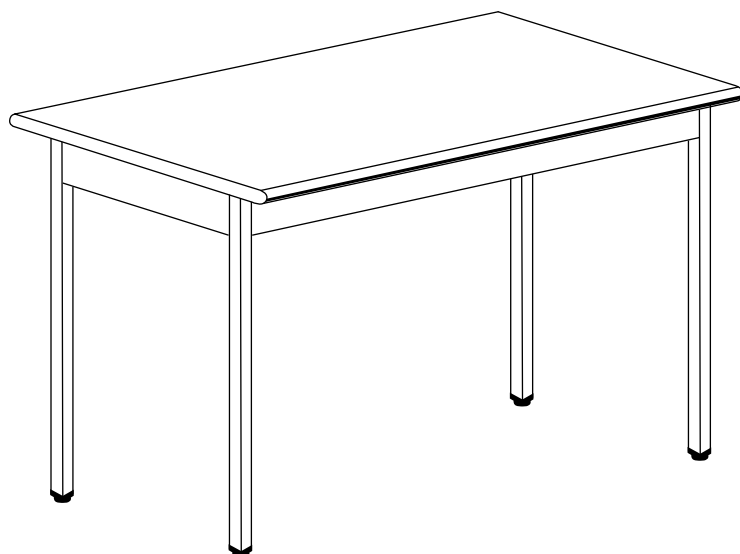
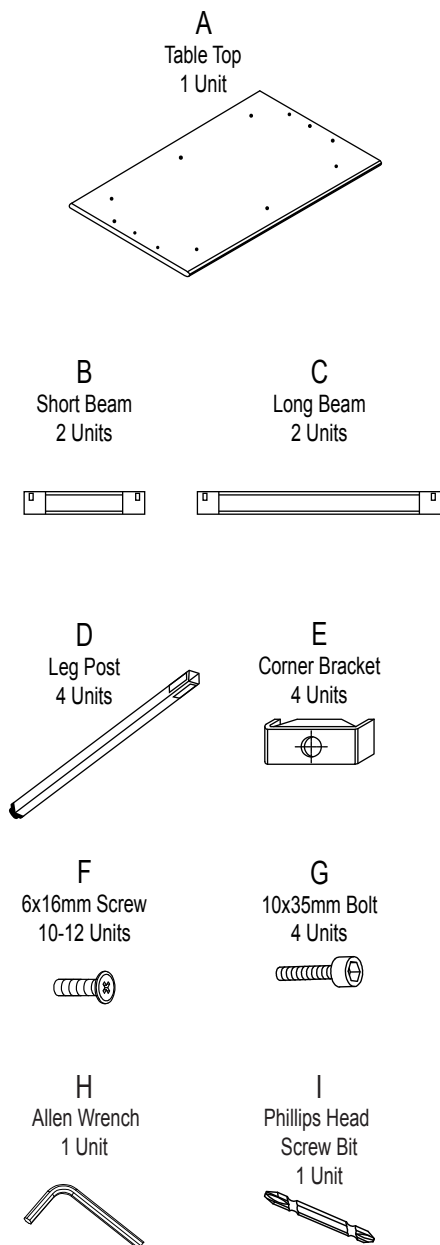


# Models UT2448 / UT2460 / UT3048 / UT3060 Utility Tables

## Parts Listing



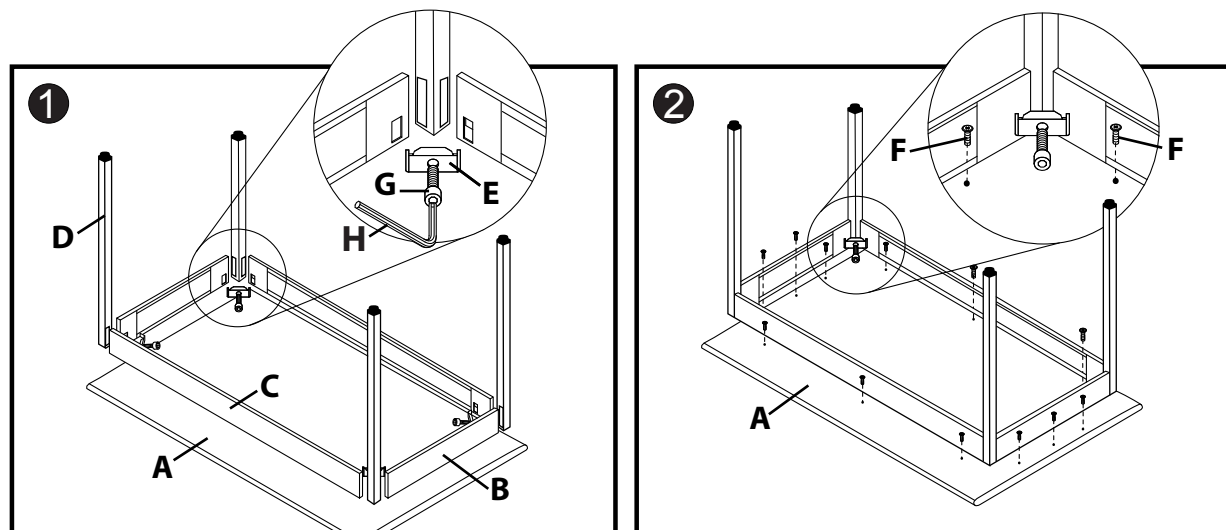
## Assembly Instructions

**STOP** Tools Needed: Allen Wrench and Phillips Head Screw Bit  
*Please read all instructions before assembly.*

**Step 1:** Place Table Top (A) upside down on a clean, flat surface. Align Leg Posts (D), as shown, to each corner where the Short Beams (B) and Long Beams (C) meet. Attach Corner Bracket (E) to one hole in Short Beam (B) and one hole in Long Beam (C), and insert 10x35mm Bolt (G) through Corner Bracket (E) and into Leg Posts (D). Tighten using Allen Wrench (H).

**Step 2:** Align holes in Short Beams (B) with holes on the underside of the Table Top (A). Insert 6x16mm Screws (F) through beam and into Table Top (A), and secure using Phillips Head Screw Bit (I) or screwdriver. Repeat on other side and with Long Beams (C).

**Note:** Level table with adjustable leveling glides on bottom of Leg Posts (D).



### Assembly Notes:

During assembly, loosely tighten screws. When all screws are in place, you may then tighten all screws completely.

### CAUTION:

1. Do not use this table as a step ladder.
2. Check for loose screws and tighten them every 6 months.

**ofm**  
Furniture For The Real Office™

161 Tradition Trail, Holly Springs, NC, 27540  
800-520-7471 (voice) 919-362-4765 (fax)  
919-303-6389 (voice) www.ofminc.com  
support@ofminc.com