



# GLOBAL INDUSTRIAL™

*We can supply that.®*

User's manual

Manual del usuario

Manuel de l'utilisateur

Customer Service  
US: 1-800-645-2986

Servicio de atención al Cliente  
US: 1-800-645-2986

Service à la clientèle  
Canada: 888-645-2986

## 100 AH / 1000W Pure Sine Wave Portable Power Supply

Model: 436981

**Converts the power of a DC 13V Lead-Acid Battery to AC 100-120V/60Hz AC Voltage through an inverter to supply power to electric hardware.**

This product has: under-voltage protection, overload protection, power display and low-voltage prompt

### Product Composition

This product is composed of:  
Main housing, Lead-acid battery, Charger, Inverter, Relay, American Standard power strip, Power display, 12V DC power supply, Heat dissipation fan

### Product Parameters

Overall Size: 17" x 13.5" x 13.5"  
Weight: Net: 90lbs, Gross: 105lbs  
Charging Input Voltage: 100-240VAC 50/60 Hz, 5A (max)  
Load Output Parameters AC: 100-120V, 60Hz, 1000W  
USB Output Parameters DC: 5V 2.1A  
Charging time: 5hrs Full Charge  
Operating Ambient Temperature: 32-104 °F  
Power Display: 7 Bar Voltage and Percentage Display  
Product Service Life: 1 year (Battery Deep Discharge: 300 Charge Cycles)



This product charges the internal lead-acid battery through the charger. After the battery is fully charged, the battery voltage (DC 13V) is converted to 100-120V AC through the inverter for output. When the battery is fully charged, the charger will automatically protect the battery by disconnecting the charger plug, and the relay coil to the inverter is closed. At this time, the inverter can be used with a load. During the use of this product, the power display shows the corresponding voltage prompt according to the power consumption proportion of the battery voltage. When the voltage of the lead-acid battery is lower than 10%, a buzzer will start an alarm. When charging, the charger must be connected to an external power supply to charge the lead-acid battery. During charging, the relay disconnects the lead-acid battery from the inverter. The inverter cannot supply a load while charging. This product has over-load and over-current protection, as well as under-voltage protection and charging surge protection.

### Warnings:

- The voltage of each electrical appliance is different. Before using any device with this power supply, check whether the rated voltage range of the product is compatible with the output of the power supply. Mis-matched voltage can cause damage and injury to the device, the power supply, and the user.
- If the battery is discharged to the cut-off voltage, further discharge is called over-discharge. Over-discharging can easily cause severe loss of battery power and shortens battery life. Avoid over-discharging the battery when in use by charging it once the cut-off voltage is reached.
- Keep the battery away from fire, high temperatures, humid or rainy environments during use and storage.
- Do not disassemble the power supply. This item has a built-in high voltage power supply.
- Do not throw this power supply in general trash at the end of its life. Please recycle this item according to local laws and regulations.
- The product's casing should be effectively and firmly grounded before use.
- Disconnect charging power cord before removing the case lid to remove or replace the battery.
- Disconnect the charging power cord before plugging any devices into the power supply.

# Portable Power Supply

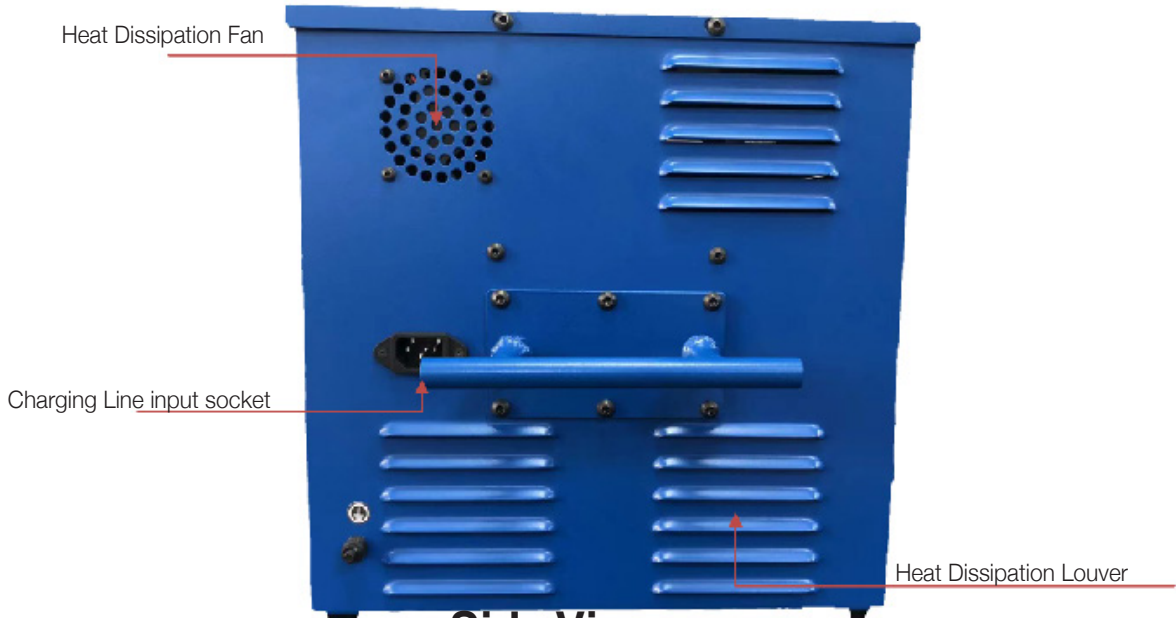
## Product Features Descriptions



Front View



Back View



Side View

# Portable Power Supply

## First Time Set-up Instructions

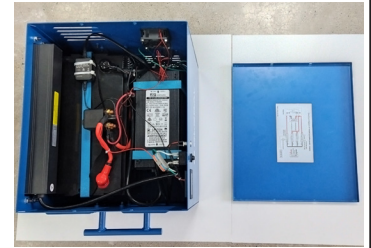
### Step 1:

Open Casing by loosening Hex Screws using included Allen Key



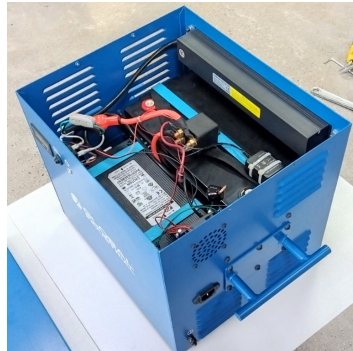
### Step 2:

Remove power cabinet cover.



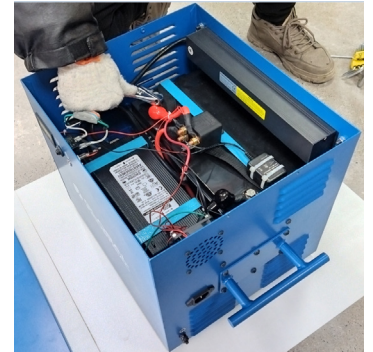
### Step 3:

Identify the battery wire terminals. Note that RED terminals correspond to the Positive (+) battery terminal.



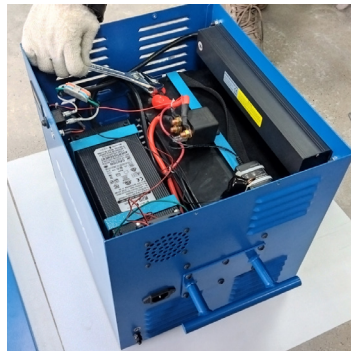
### Step 4:

Insert bolt through Red (+) wire terminal. Place the flat washer, lock washer, then bolt onto the battery terminal nut and tighten securely with wrenches.



### Step 5:

Insert bolt through Black (-) terminal. Be cautious of sparks; it is normal to spark for a first time, connection. Place the flat washer, lock washer, then bolt into the nut and tighten securely with wrenches.



### Step 6:

Place battery cover on and securely tighten Hex Screws.



## Charging Instructions

Insert one end of the input line into the charging socket of the housing, and the other end into an external energy source, including wall outlets. Check that the input voltage is within 100-240VAC 50/60Hz.

## Product Operation Steps

1. Connect the device to the Power Strip on the housing.
2. Turn on the power switch located on the front of the housing and the red button on the power strip IN THAT ORDER.

# Portable Power Supply

## Maintenance Information

- Each time the unit is fully charged, unplug and let the unit cool for approximately 10 min.
- Charge fully before use, especially for first time use.
- Periodically clean dust and dirt from heat dissipation louvers.
- Keep the housing dry and clean to protect battery from discharging on its own.
- Do not store the battery uncharged. If it is to be stored for a long time, it should be fully charged, placed in a cool and dry place, and recharged regularly.
- At low temperatures, there can be issues of battery power loss caused by poor charging acceptance and insufficient charging. Thermal insulation and anti-freezing measures must be taken at low temperature, especially while charging. The device should be kept in a warm environment to prevent irreversible sulfation.
- Do NOT expose the product to moisture or water- Do not wash product.

## Avertissement :

- Les normes de tension des différents appareils électriques sont différentes. Avant l'utilisation, vérifiez soigneusement si la plage de tension nominale du produit est compatible avec la plage de tension de l'alimentation portable, sinon cela peut être dangereux;
- Une fois que la batterie est déchargée jusqu'à la tension d'arrêt, une décharge plus importante est appelée surdécharge. Une décharge excessive peut facilement provoquer une grave perte de puissance de la batterie, ce qui réduit considérablement sa durée de vie. Il convient donc d'éviter toute décharge profonde lorsque la batterie est utilisée;
- Pendant l'utilisation et le placement, le produit doit être tenu à l'écart du feu, d'un environnement à haute température, d'un environnement humide et pluvieux, sinon il peut présenter un danger;
- Ce produit possède une alimentation haute tension intégrée. Les non professionnels ne sont pas autorisés à le démonter eux-mêmes;
- Veuillez ne pas jeter le produit à volonté après la fin de sa durée de vie, et veuillez le recycler conformément aux lois et réglementations locales;
- Le boîtier du produit doit être efficacement et fermement mis à la terre avant utilisation