



**GLOBAL  
INDUSTRIAL**™

*We can supply that.®*

User's manual

Manual del usuario

Manuel de l'utilisateur

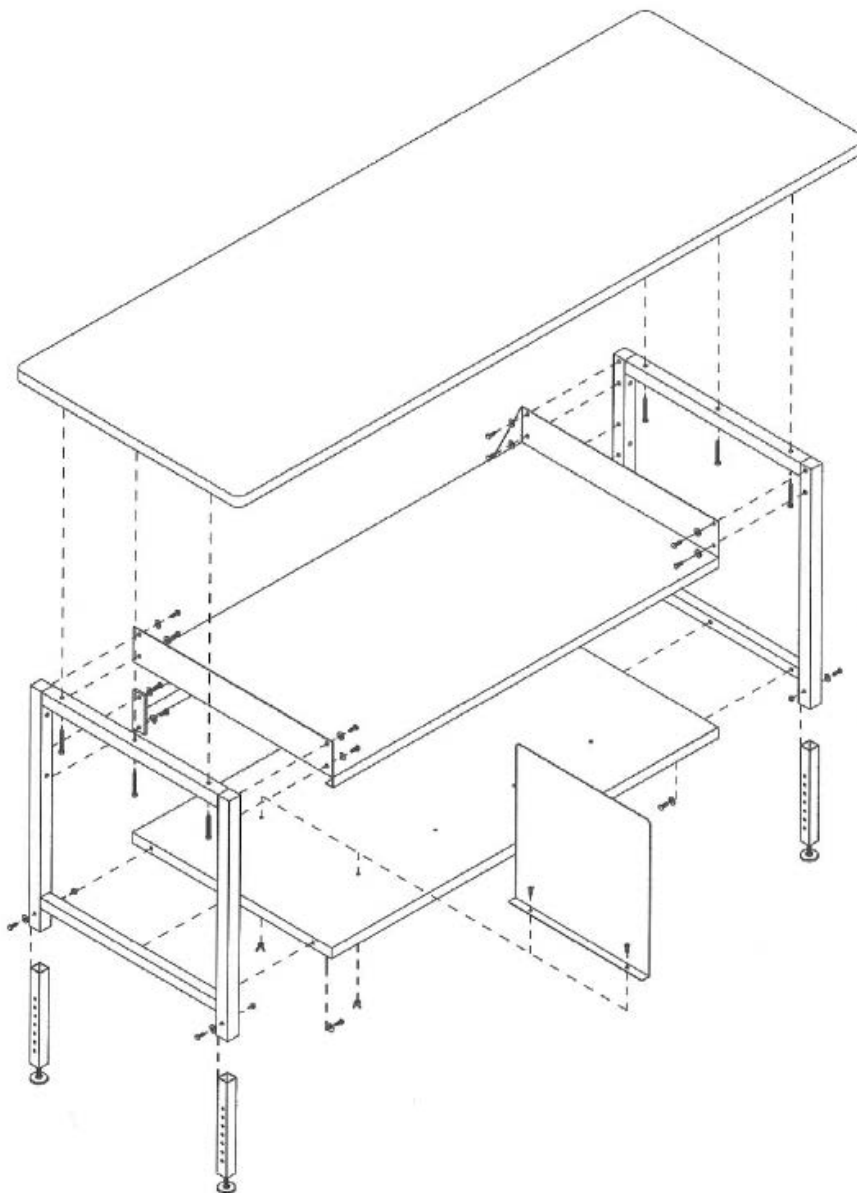
Customer Service  
US: 1-800-645-2986

Servicio de atención al Cliente  
US: 1-800-645-2986

Service à la clientèle  
Canada: 888-645-2986

## Bench-In-A-Box Packing Workbench

B2336389: 72"W x 30"D Maple Butcher Block Eased Edge  
B2336390: 72"W x 30"D ESD Laminate T-Mold Edge (ref page 2)  
B2336391: 72"W x 30"D Plastic Laminate T-Mold Edge  
B2336392: 60"W x 30"D Maple Butcher Block Eased Edge  
B2336393: 60"W x 30"D ESD Laminate T-Mold Edge (ref page 2)  
B2336394: 60"W x 30"D Plastic Laminate T-Mold Edge



1. Assemble base frame using 1/4" - 20 x 3/4" hex head bolts and 1/4" washers (18 places).
2. Assemble leg extenders using 1/4" - 20 x 2" hex head bolts, flat washers and elastic lock nuts.
3. Mount dividers using 1/4" x 3/8" truss head bolts and wing nuts.
4. Mount top flush to back of bench with equal overhang on both sides using #12 x 2 Phillips pan head sheet metal screws.

Note: shelving and dividers are optional

# Packing Workbench

ESD installation only for below models:

B2336390: 72"W x 30"D ESD Laminate T-Mold Edge

B2336393: 60"W x 30"D ESD Laminate T-Mold Edge

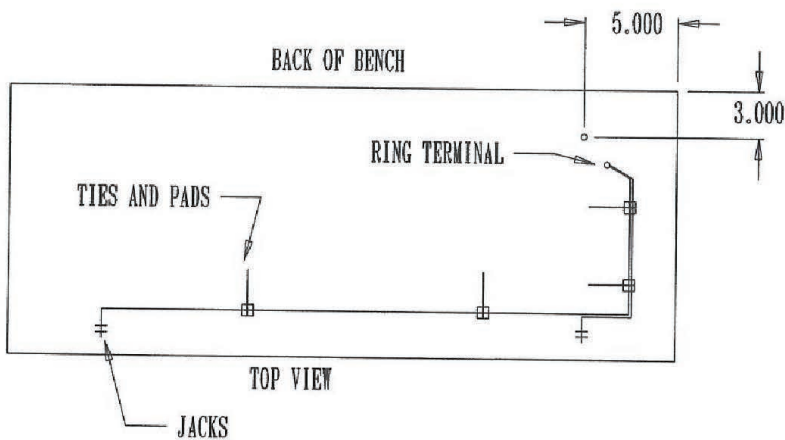
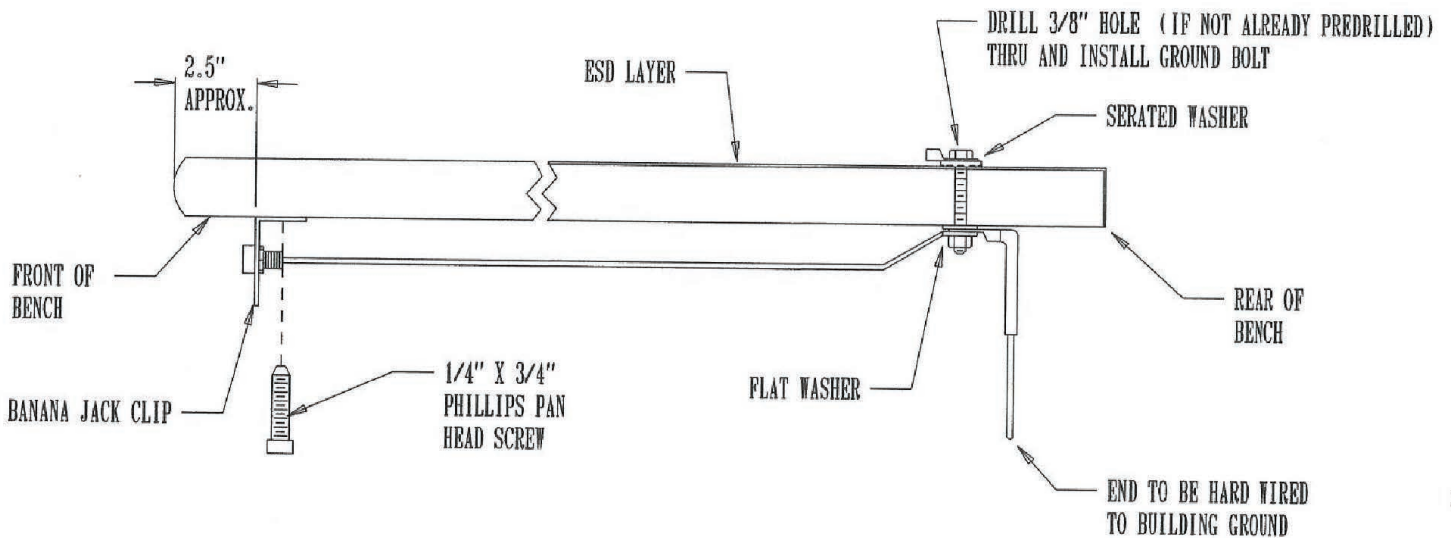
1. Drill 3/8" hole in worksurface per measurements in the top view (if not already pre-drilled).

2. Install 5/16" x 2" hex head bolt, ring terminal and serated washer through worksurface, on underside of worksurface install washer, ring terminal, washer, ring terminal, washer and nut in this order and tighten.

3. Attach the banana jack clips approximately 2 1/2" from the front of the worksurface and close to the side of the front legs using 1/4" x 3/4" Phillips pan head screws.

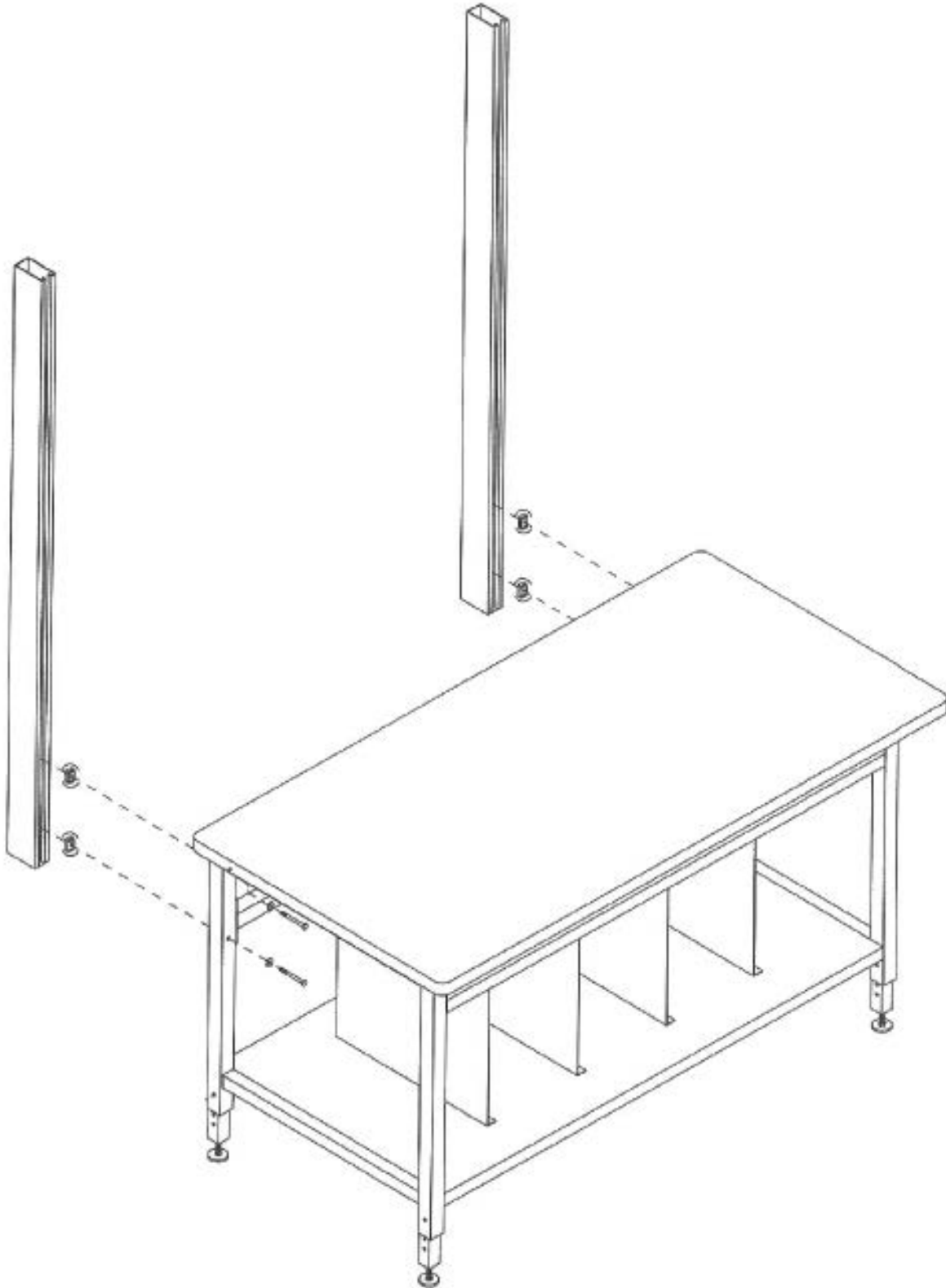
4. Attach the banana jacks and the run wires in the manner shown in top view using wire ties and self stick pads (4 to 6 per bench)

Note: Pads stick better to metal surface if possible.



# Packing Workbench

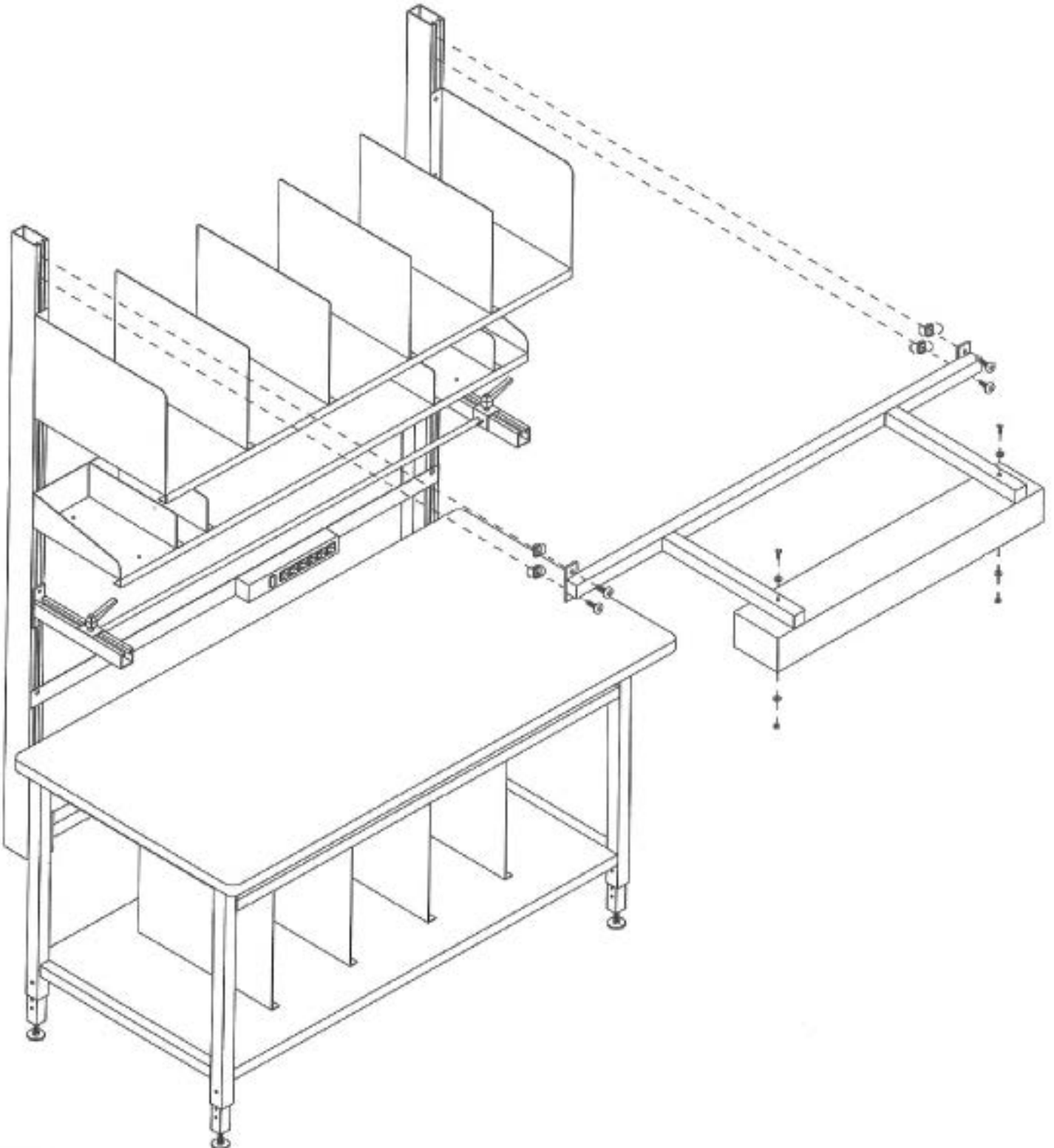
1. Mount 1/4" x 2 1/2" hex head bolts and washers through rear legs as shown.
2. Turn 1/4" strut nuts on approximately two (2) threads.
3. Hold heavy duty uprights against back of rear legs.
4. Push bolt assembly into uprights and turn clockwise to tighten.



# Packing Workbench

1. Mount light frame to uprights using 3/8" x 1" allen cap machine screws and 3/8" strut nuts.
2. Mount light fixture to light frame using 1/4" - 20 x 2" hex head bolts 1/4" flat washers and 1/4" kepnuts.

Recommended Bulbs  
36" Fixtures : F30 T8 . F25 T8

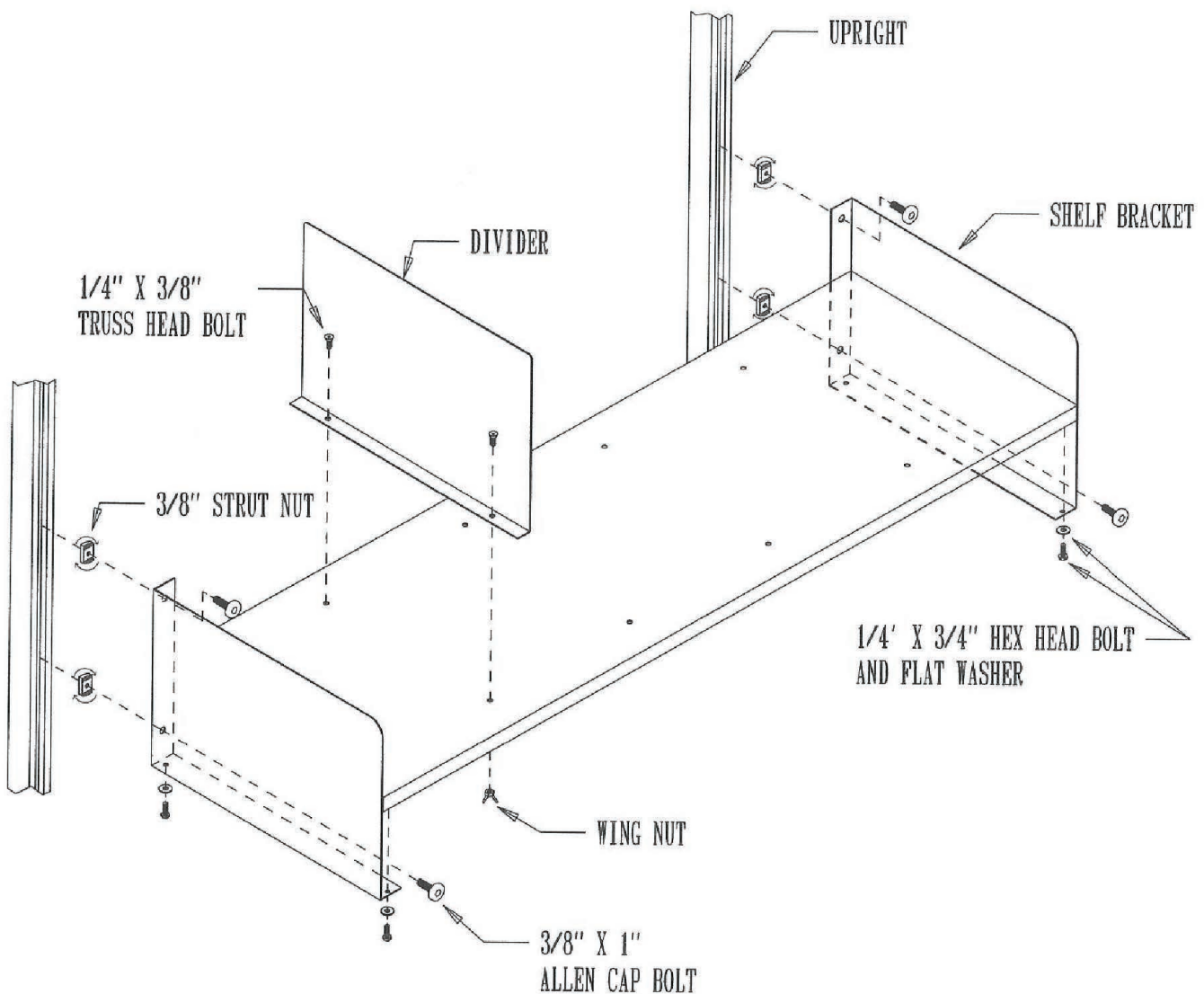


# Packing Workbench

1. Assemble the steel shelf to the shelf brackets as shown using 1/4" x 3/4" hex head bolts and flat washers.
2. Loosely assemble the 3/8" x 1" allen cap machine screws and 3/8" strut nuts to the shelf brackets, spin the strut nuts on approx. 2 to 3 revolutions.

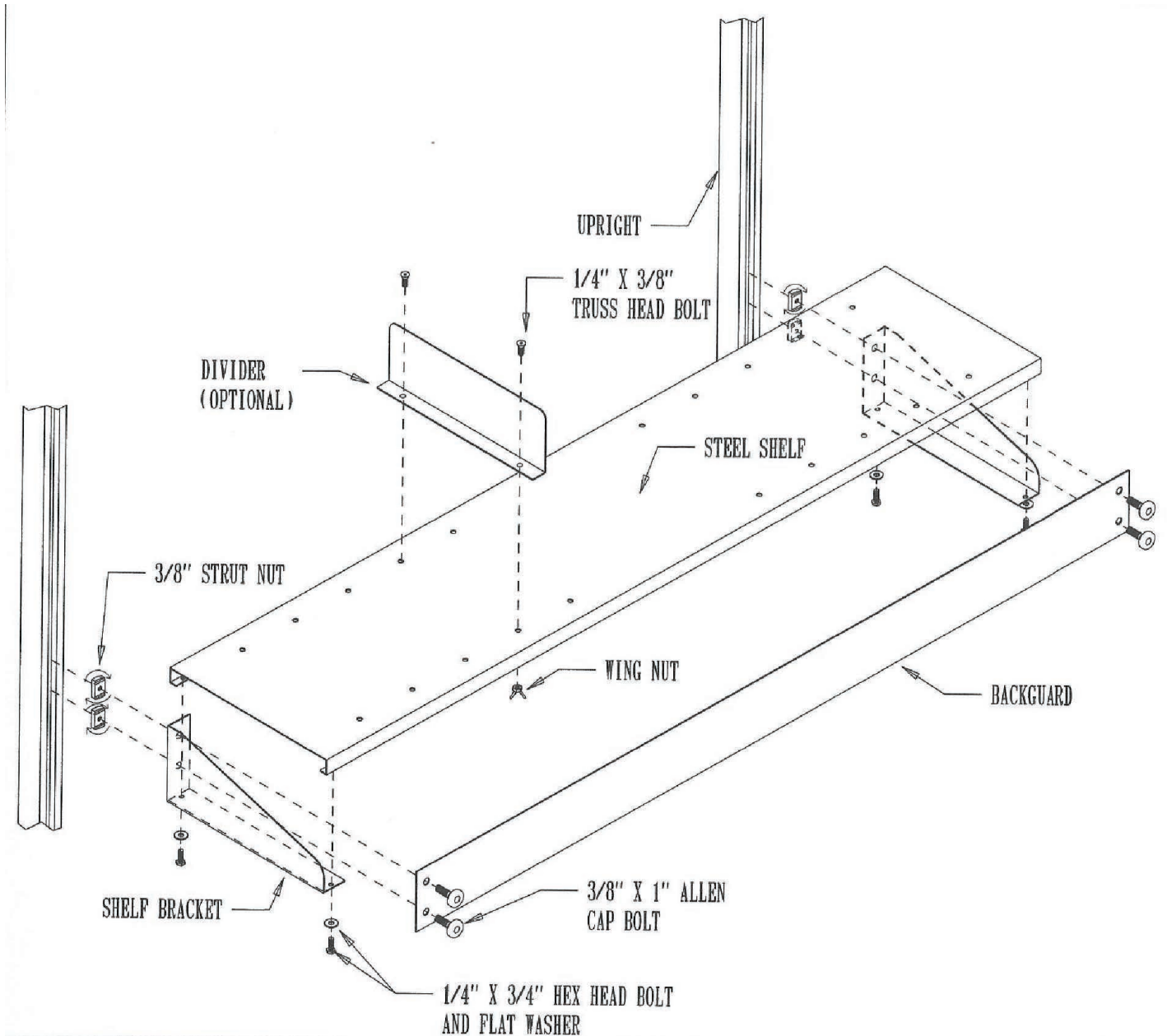
Note: Be certain the "teeth" on the strut nuts are facing the shelf bracket.

3. At the desired height, push the strut nut assembly into the upright channel and turn the strut nut assembly clockwise making sure the "teeth" on the strut nut are against the "ribs" located inside the upright and tighten.
4. Mount dividers to the Shelves using 1/4" x 3/8" truss head bolts and wing nuts.



# Packing Workbench

1. Assemble the steel shelf to the shelf brackets as shown using 1/4" x 3/4" hex head bolts and flat washers.
2. Place the backguard against the shelf brackets and loosely assemble the 3/8" x 1" allen cap machine screws and 3/8" strut nuts to the shelf brackets, spin the strut nuts on approx 2 to 3 revolutions. Be certain the "teeth" on the strut nuts are facing the shelf bracket.
3. At the desired height , push the strut nut assembly into the upright channel and turn the strut nut assembly clockwise, making sure the "teeth" on the strut nut are against the "ribs" located inside the upright and tighten.
4. Mount dividers (if purchased) to the shelves using 1/4" x 3/8" truss head bolts and wing nuts.



# Packing Workbench

1. Mount paper spool holder and ESMR at desired height using 3/8" x 1" allen cap machine screws and strut nuts.
2. Secure the electrical strip spring clips to the ESMR using 6/32" x 3/8" slotted head bolts and 6/32 hex nuts.
3. Snap electrical strip into spring clips.

