



**GLOBAL
INDUSTRIAL**

We can supply that.®

User's manual

Manual del usuario

Manuel de l'utilisateur

Customer Service
US: 1-800-645-2986

Servicio de atención al Cliente
US: 1-800-645-2986

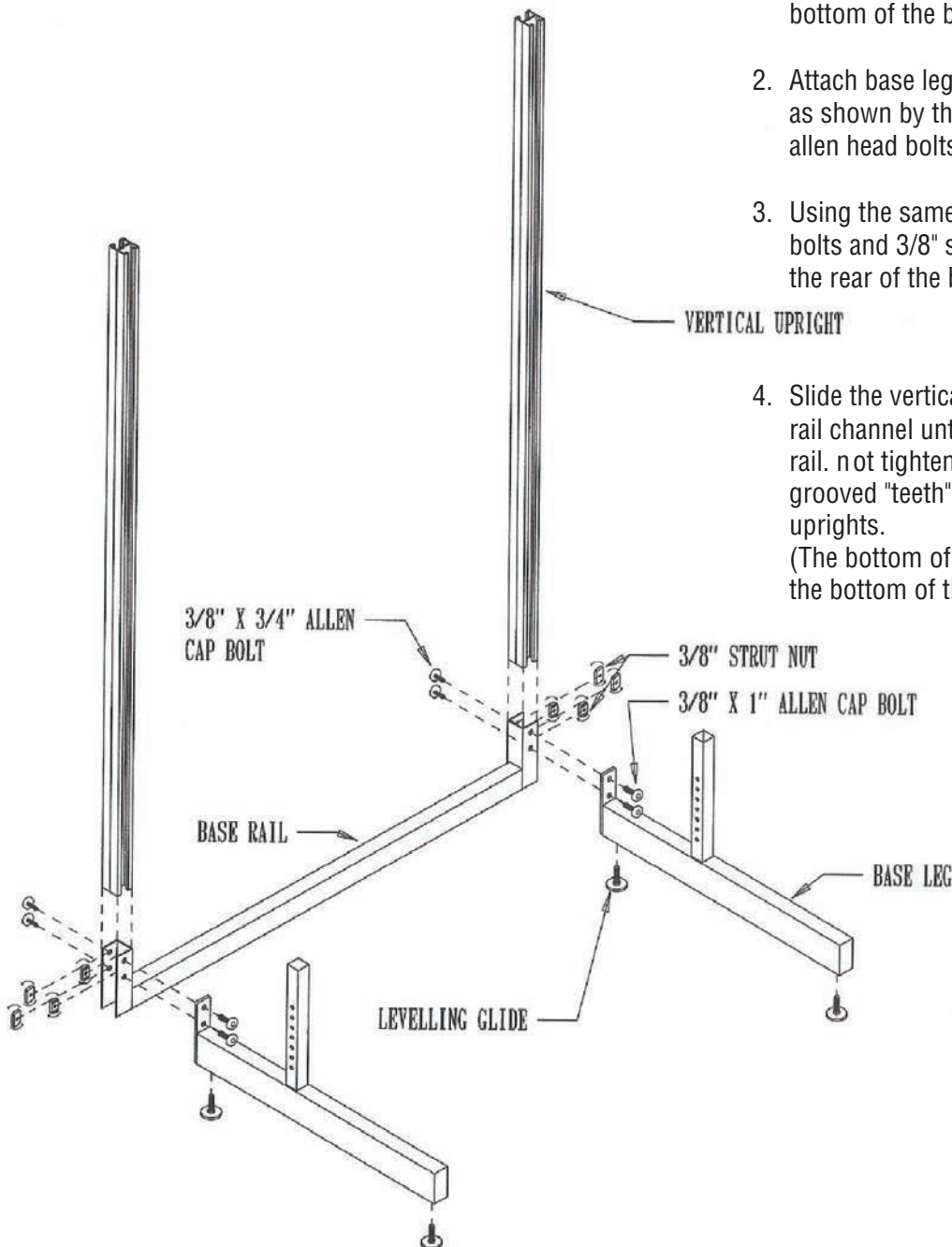
Service à la clientèle
Canada: 888-645-2986

Bench-In-A-Box Cantilever Workbench

B2334692: 60"W x 30"D ESD Laminate Top (ref page 5)

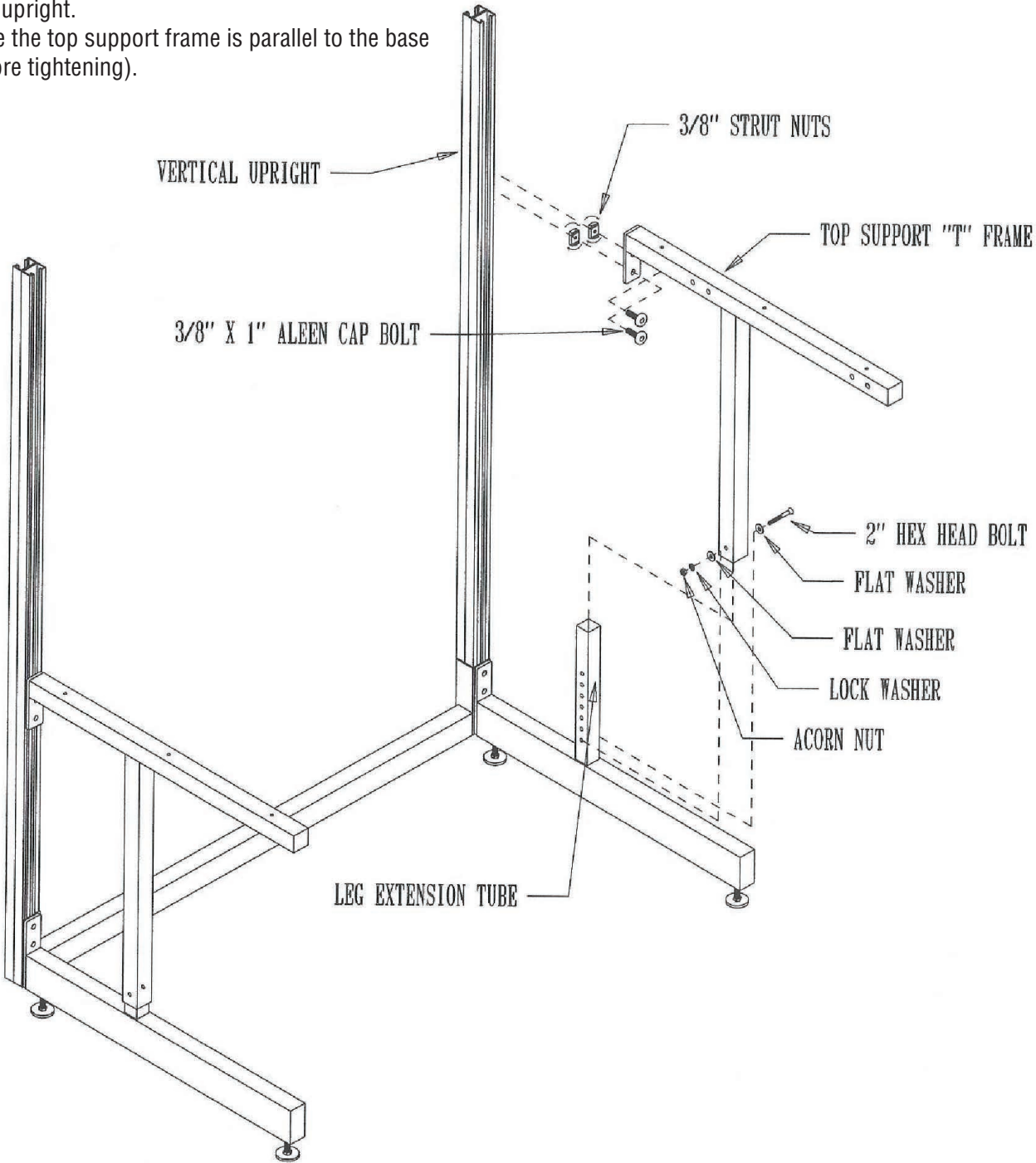
B2334693: 60"W x 30"D Plastic Laminate Top

1. Install leveling glides by threading them into the bottom of the base legs as shown.
2. Attach base leg through base rail mounting channel as shown by threading 3/8" strut nuts onto the 3/8" allen head bolts by only 2 threads.
3. Using the same method but with 3/4" allen head bolts and 3/8" strut nuts, bolt these items through the rear of the base rail channel.
4. Slide the vertical uprights down through the base rail channel until flush with the bottom of the base rail. Do not tighten the allen head bolts making sure the grooved "teeth" line up with the inside of the vertical uprights.
(The bottom of the base rail should be flush with the bottom of the vertical uprights).



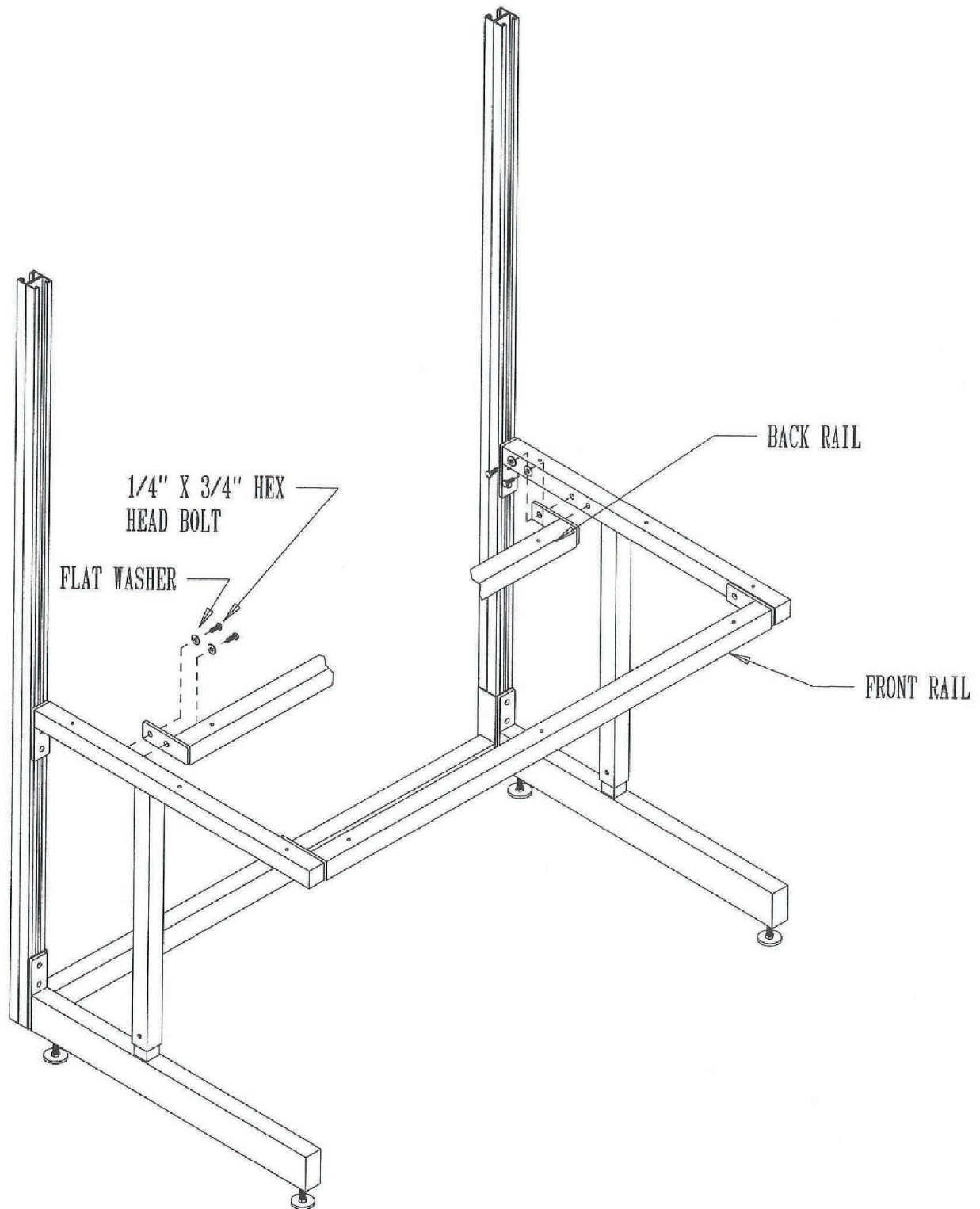
Cantilever Workbench

1. Install 3/8" x 1" allen cap bolt through top of the "T" frame as shown, threading the 3/8" strut nuts only on by 2 threads.
2. Slide top support "T" frame over base leg extension tube, allowing the strut nuts to slide vertically inside the vertical upright and bolt at desired height using the 1/4" x 2" hex head bolt, flat washer, flat washer, lock washer and acorn nut.
3. Fasten top support "T" frame to the vertical uprights by turning the 3/8" x 1" allen cap bolt being certain the grooved "teeth" line up with the inside of the vertical upright.
(be sure the top support frame is parallel to the base leg before tightening).



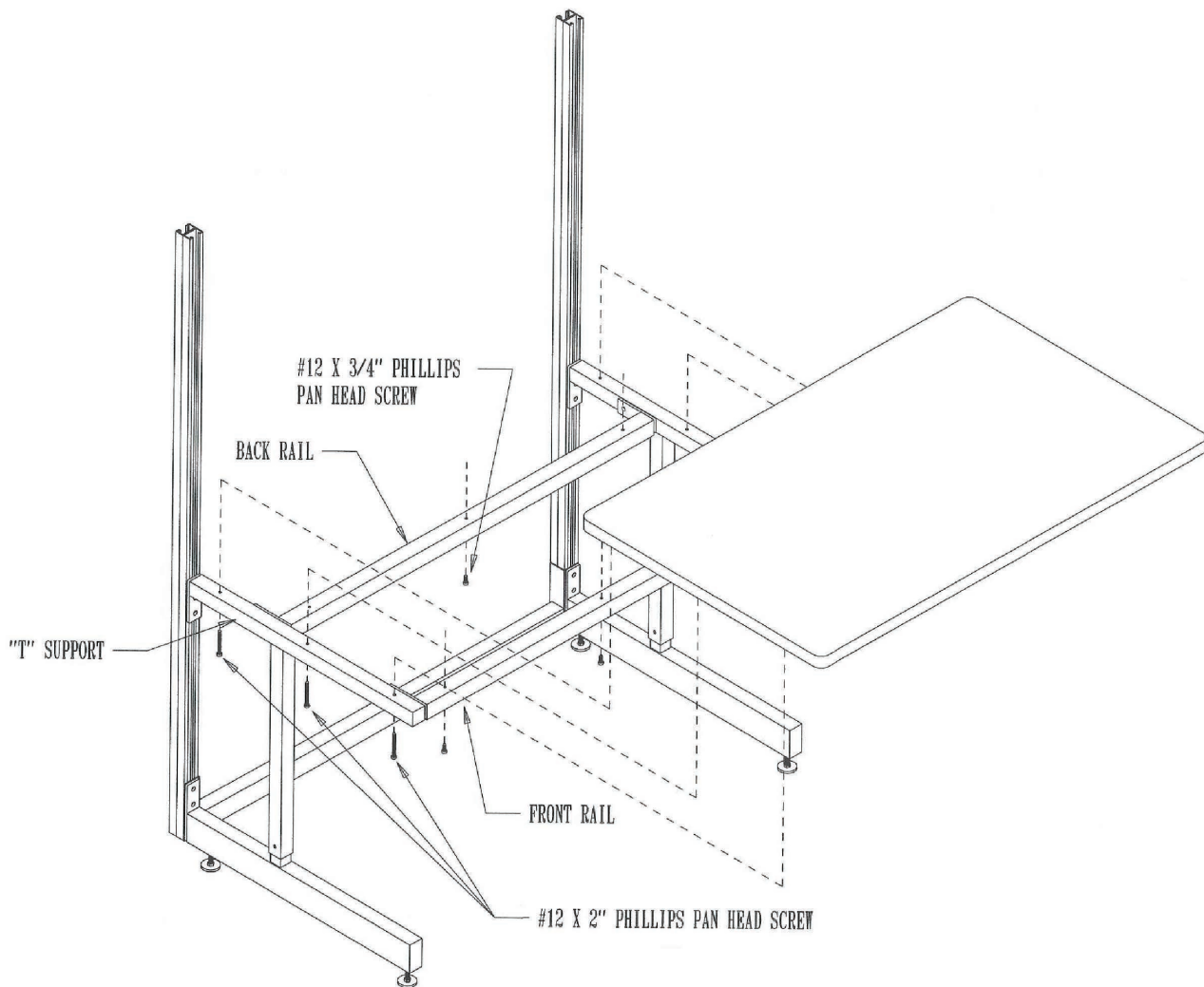
Cantilever Workbench

1. Mount front and back rail top support frames as shown using 1/4" x 3/4" hex head bolts and flat washers.



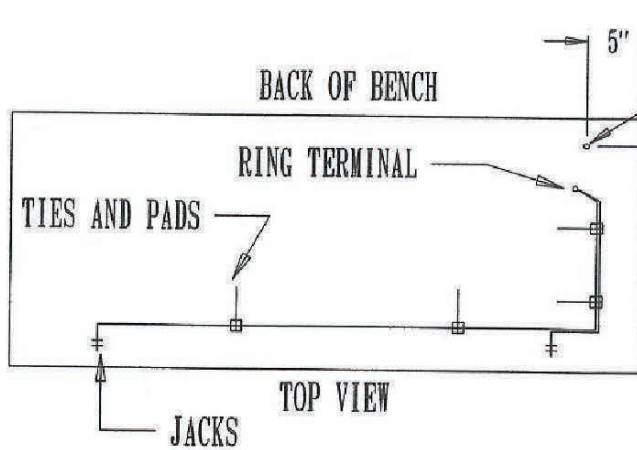
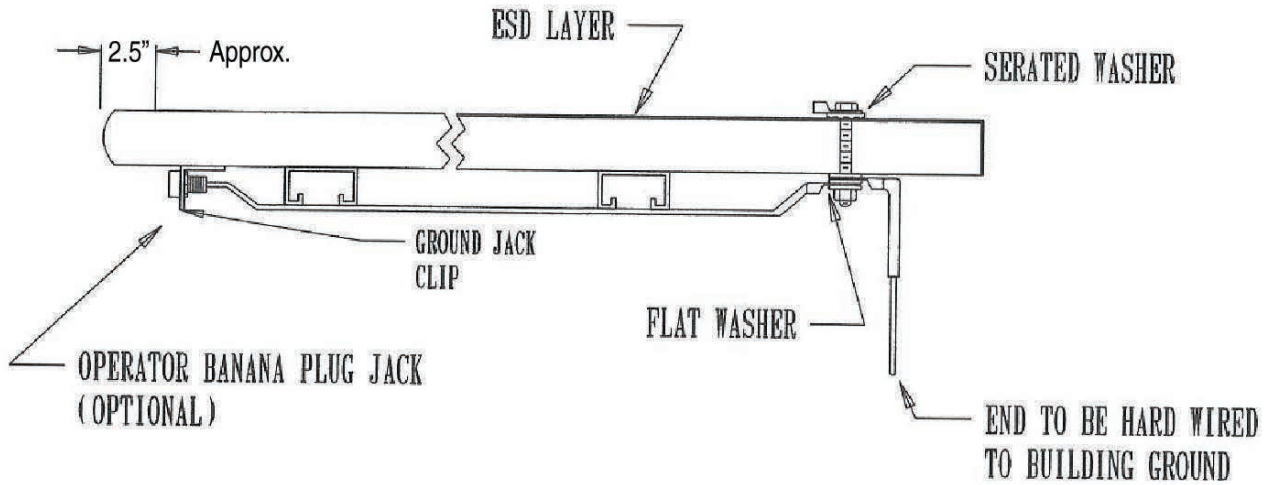
Cantilever Workbench

1. Secure the worksurface using #12 x 2" Phillips pan head screws through the top support "T" frame and #12 x 3/4" Phillips pan head screws through the front and back rails.



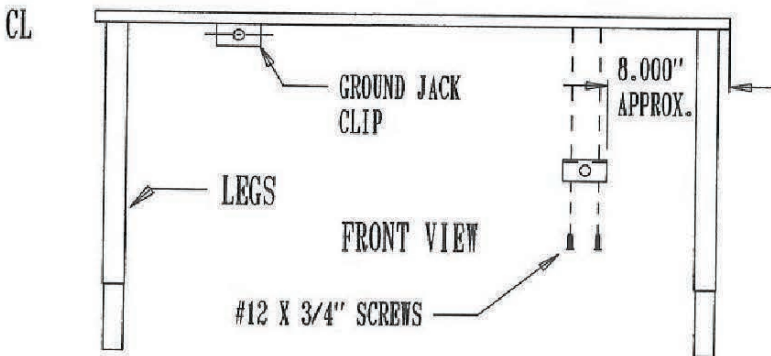
Cantilever Workbench

ESD installation only for below models:
 B2334692: 60"W x 30"D ESD Laminate Top (ref page 5)



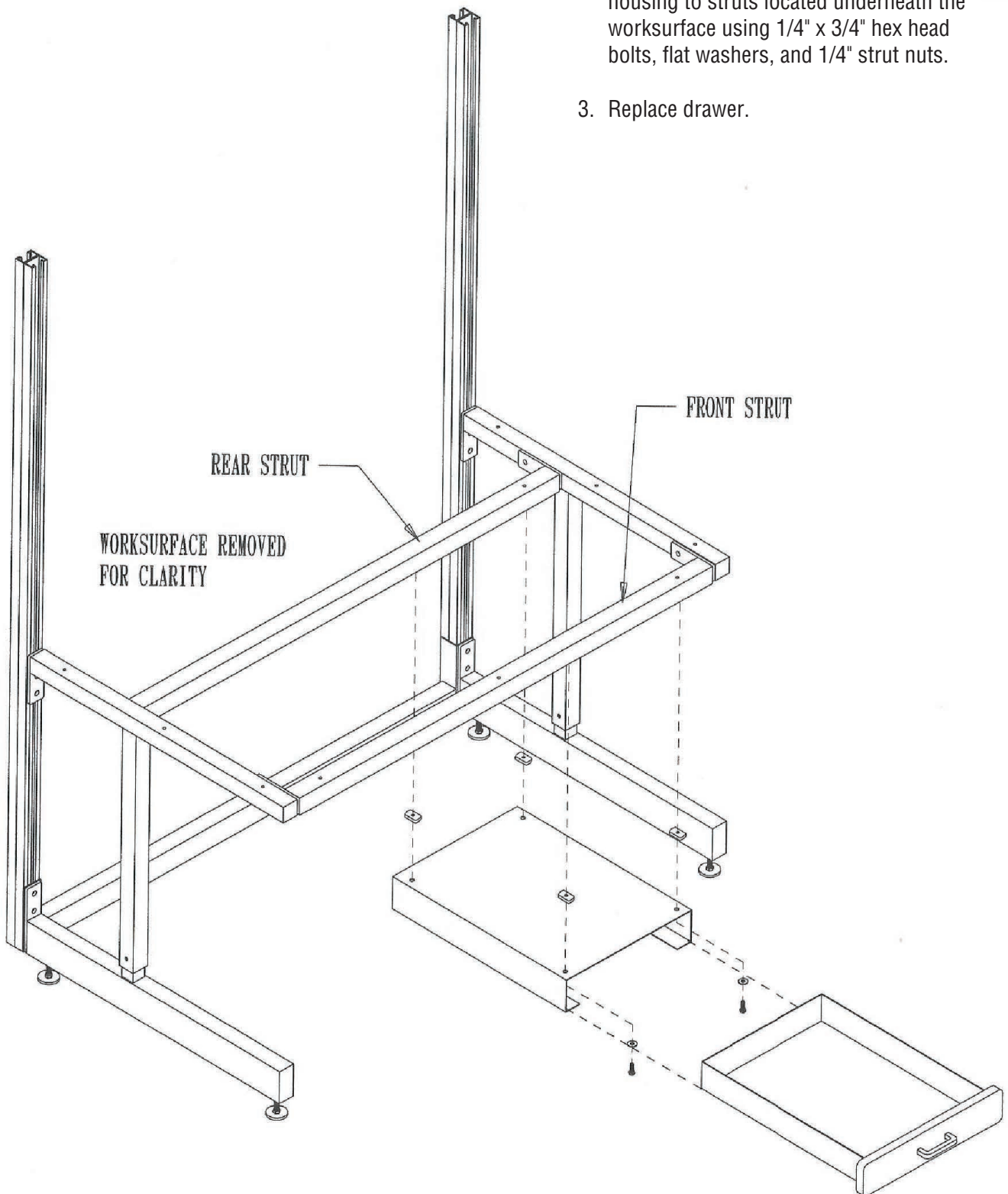
DRILL 3/8" HOLE (IF NOT ALREADY PREDRILLED) THRU AND INSTALL GROUND BOLT

1. Drill 3/8" hole in worksurface pre measurements in the top view (if not already pre-drilled).
2. Install 5/16" x 2" hex head bolt, ring terminal, and serrated washer through worksurface, on underside of workspace install washer, ring terminal, washer, and nut in this order and tighten.
3. Measuring approximately 8" in from outside the worksurface attach the ground jack clip to the underside of the worksurface using #12 x 3/4" Phillips pan head screws.
4. Mount jacks into the ground jack clips using nuts provided.
5. Run wires in manner shown in top view using wire ties and self stick pads (4 to 6 per bench)
 Note: pads stick better to metal surface.
6. Cut wires to appropriate length by pulling wires (to remove excess slack) towards the hole in the worksurface and adding 1" to that. Strip wires back 1/4" and install the ring terminal by crimping it to both exposed wires at the same time.

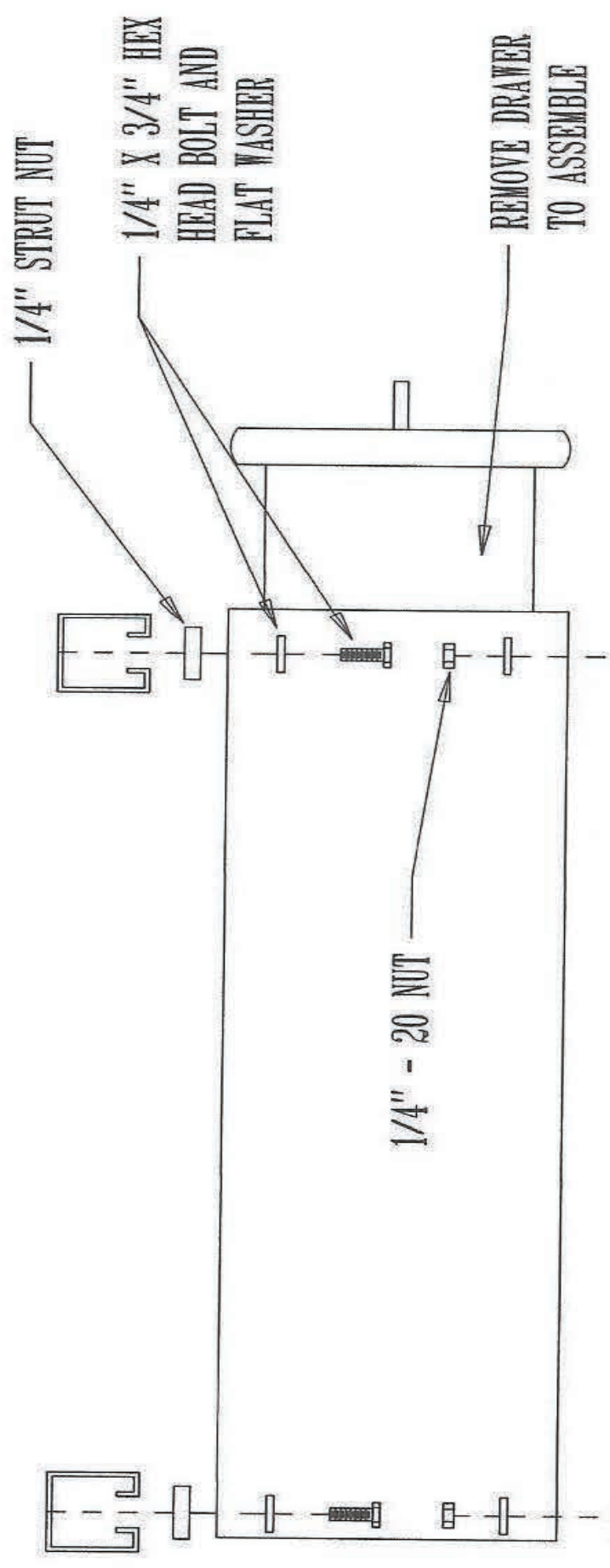


Cantilever Workbench

1. Remove drawer from housing.
2. At the desired location mount the drawer housing to struts located underneath the worksurface using 1/4" x 3/4" hex head bolts, flat washers, and 1/4" strut nuts.
3. Replace drawer.



Cantilever Workbench

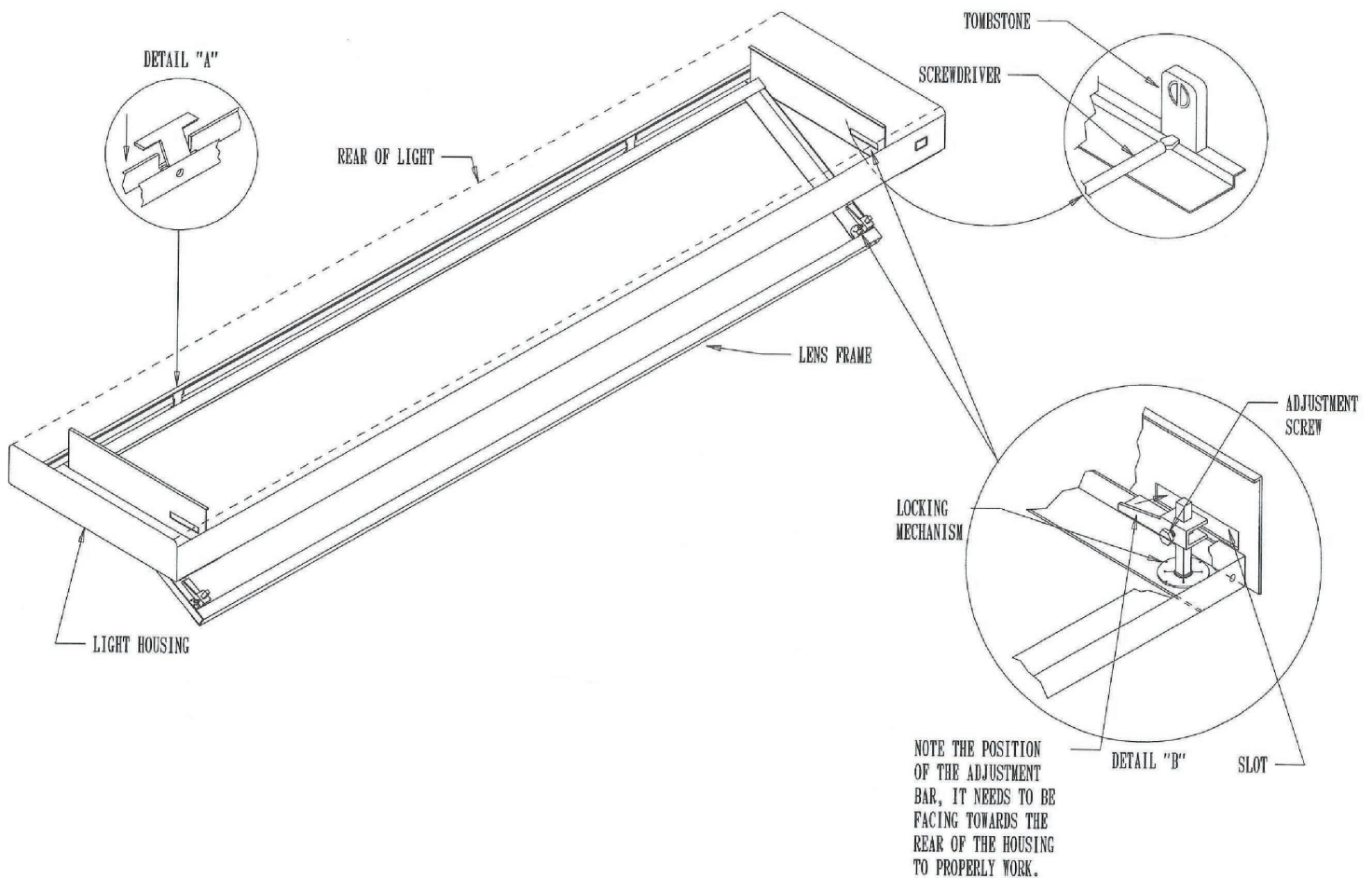


Cantilever Workbench

1. Place the lens frame on the light housing so that the "tabs" on the lens frame hang over the notches in the rear of the light housing. (see detail "A").
2. Adjustments will be needed to make the lens frame flush with the bottom of the light housing. To do that, loosen the adjustment screw located on the lens locking mechanism and slide the adjustment bar up or down to the proper height. (see detail "B").
3. Once adjusted lock the lens frame in place by turning the bolt so the adjustment bar goes inside the slot on the light housing.

Note: If the bulbs fit too tight, place a flat head screwdriver as shown onto the base of the tombstone and gently tap with a hammer and repeat action on the other tombstones.

Note the position of the adjustment bar. It needs to be facing towards the rear of the housing to properly work.



Cantilever Workbench

1. Place the cover plates over light extension arms, line up the holes and attach a #12 x 1/2" Phillips pan head screw (see fig. 1)
2. Install 3/8" x 3/4" allen cap machine screws through light frame bracket and top rail channel bracket by threading the 3/8" strut nut on only by two threads.
3. Install 3/8" x 3/4" allen cap bolts through the back of the top rail channel bracket by threading the 3/8" strut nut on only by two threads.
4. Slide light frame brackets (with the top rail assembly) Down over the top of the vertical uprights and tighten. Flush with the top of the Uprights
5. Secure the light frame strut to the light frame brackets at the desired location using 1/4" x 3/4" hex head bolts, 1/4" flat washer and 1/4" strut nuts as shown.
6. Attach the light fixture mounting bracket to the light frame bracket using 1/4" x 3/4" hex head bolts flat washers and 1/4" strut nuts as shown. Attach the light frame strut to the top of the light fixture mounting bracket also using 1/4" x 3/4" hex head bolt, flat washer and strut nut.
7. Refer to drawing on page 8 to open the lens cover prior to continuing with this step. Loosely fasten the 1/4" x 3/4" hex head bolts, 1/4" flat washers and 1/4" strut nuts as shown to the light fixture.
8. Loosely attach the light fixture to the light frame strut. Center the light fixture assembly over the worksurface and tighten the hex head bolts.
9. Install tubing and strut caps as shown using a hammer.

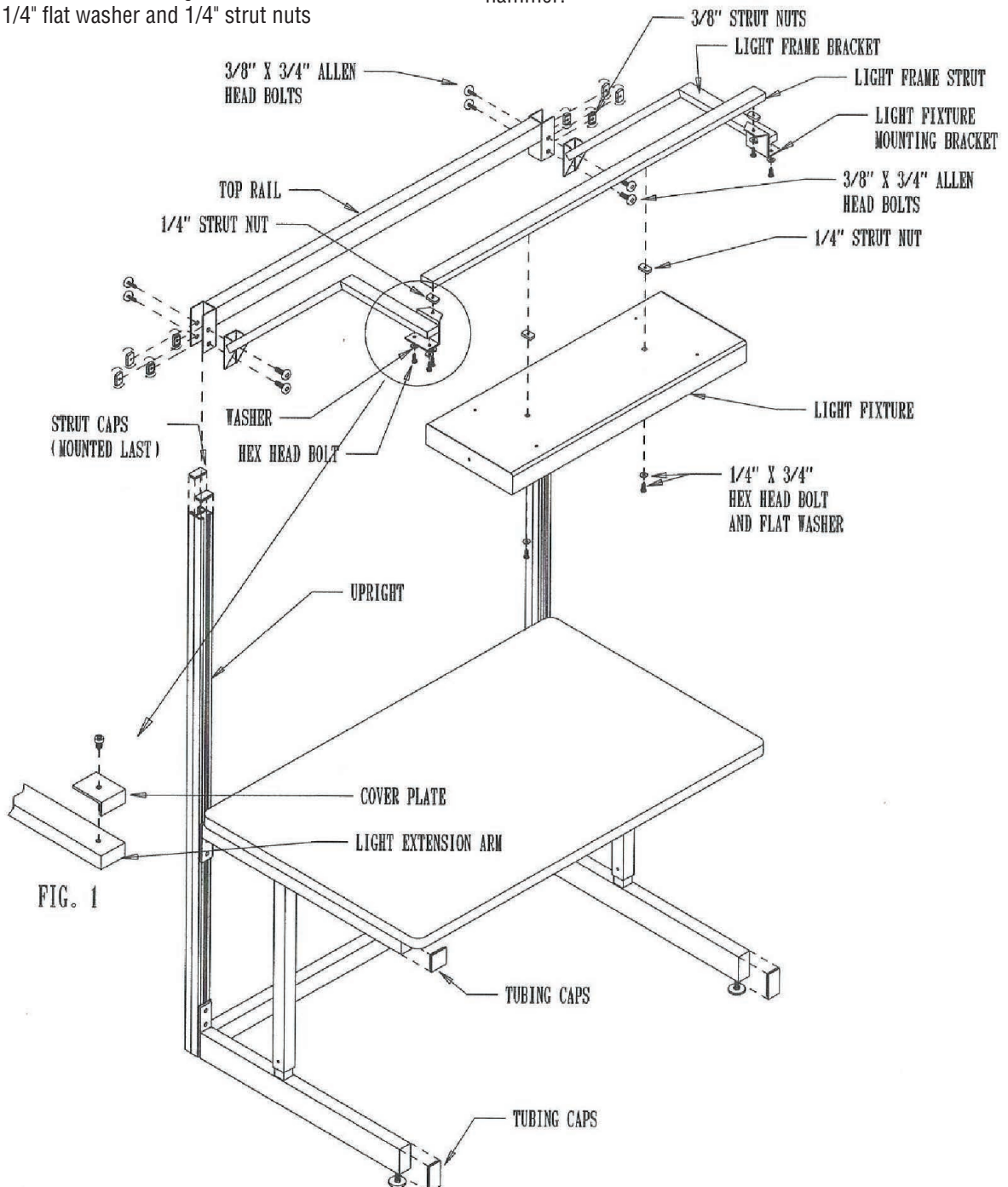
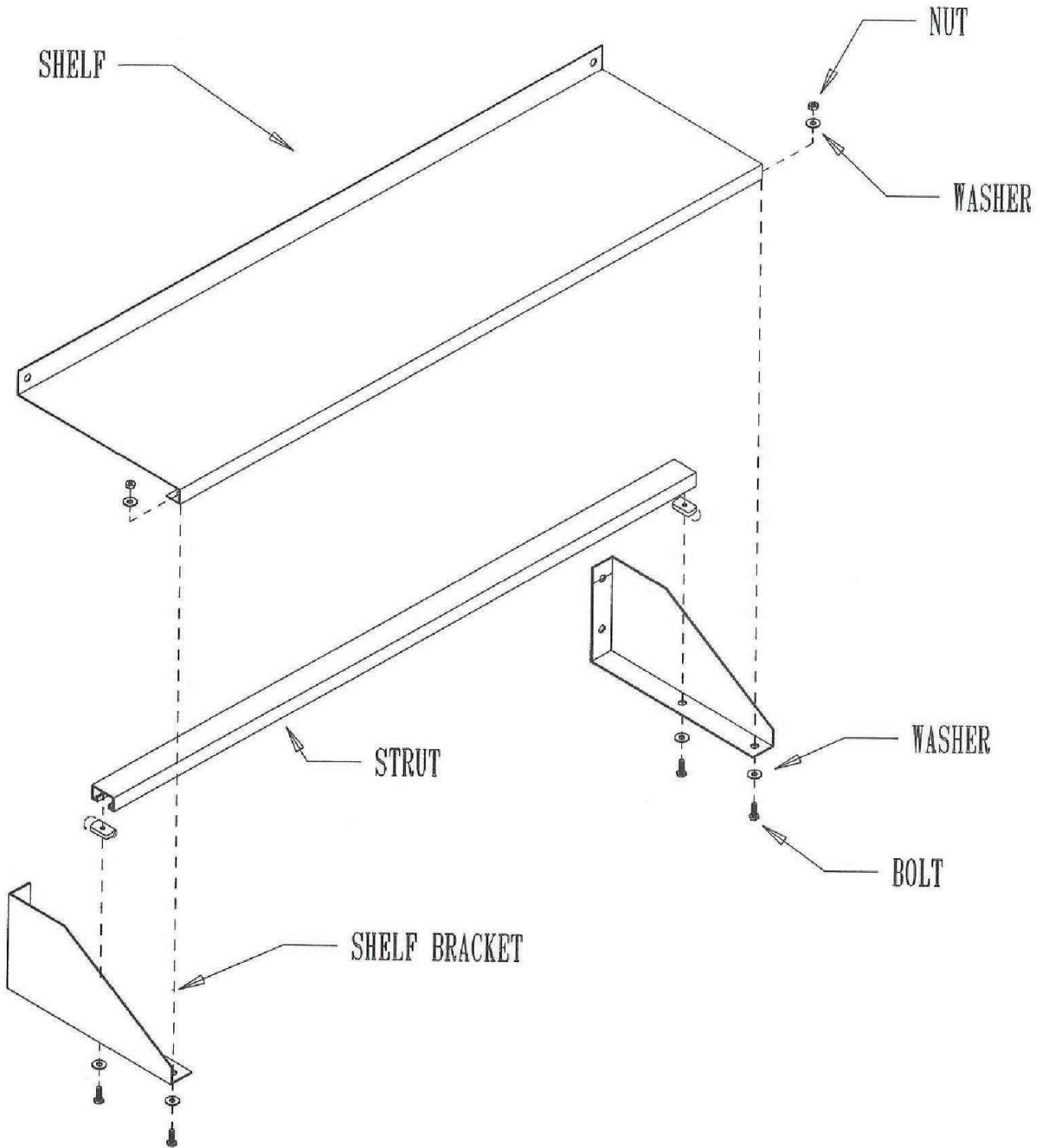


FIG. 1

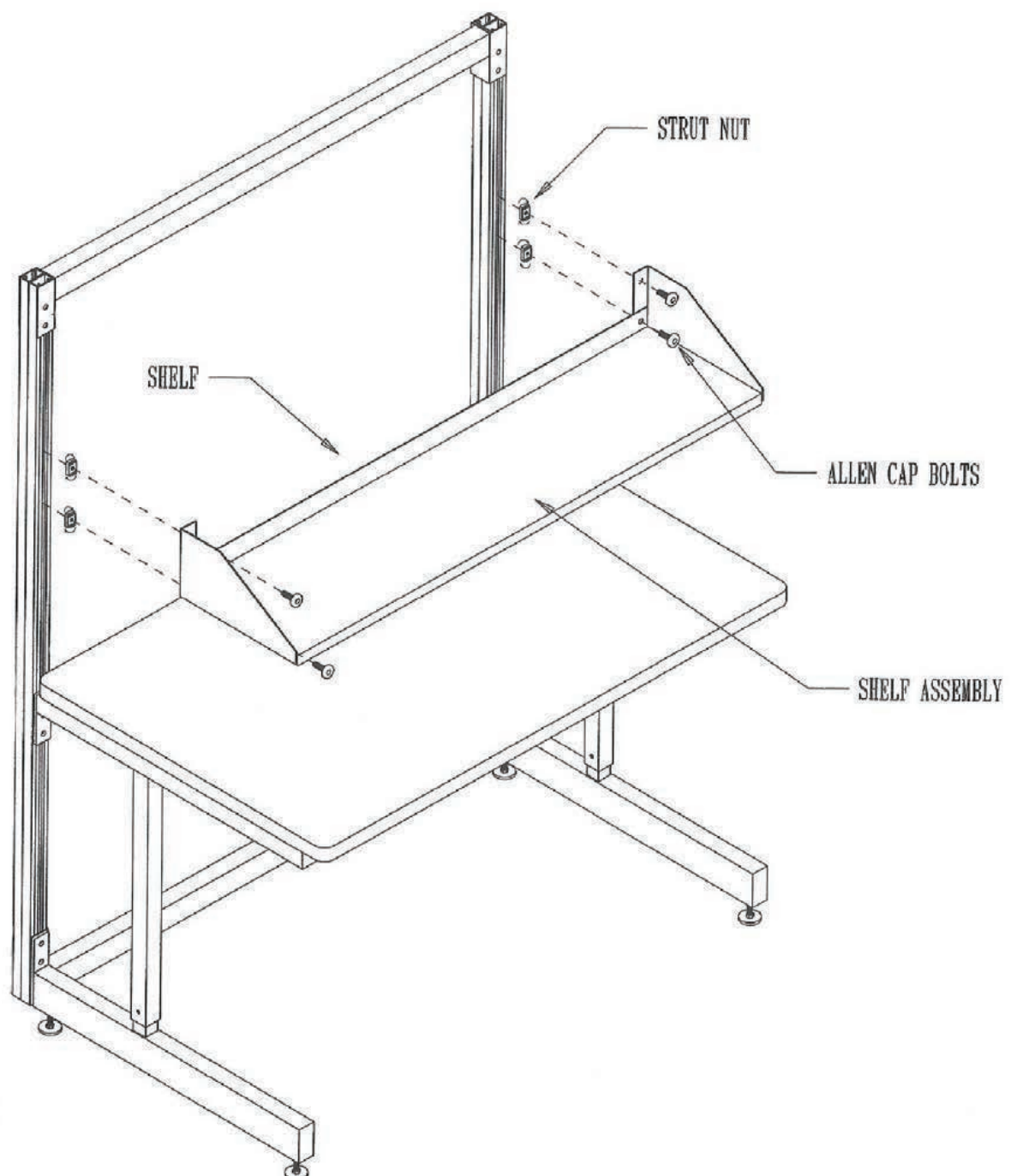
Cantilever Workbench

1. Insert 1/4" x 3/4" hex head bolt through 1/4" washer and into hole located in the center of the shelf bracket, and thread the 1/4" strut nut on (approximately 2 turns).
2. Place strut onto shelf bracket, making sure to insert the strut nut into the strut and tighten.
3. Repeat steps 1 and 2 for other shelf bracket.
4. Place shelf onto the shelf bracket assembly and secure in the front of the assembly with 1/4" x 3/4" hex head bolt, flat washers and kep nuts as shown and tighten.



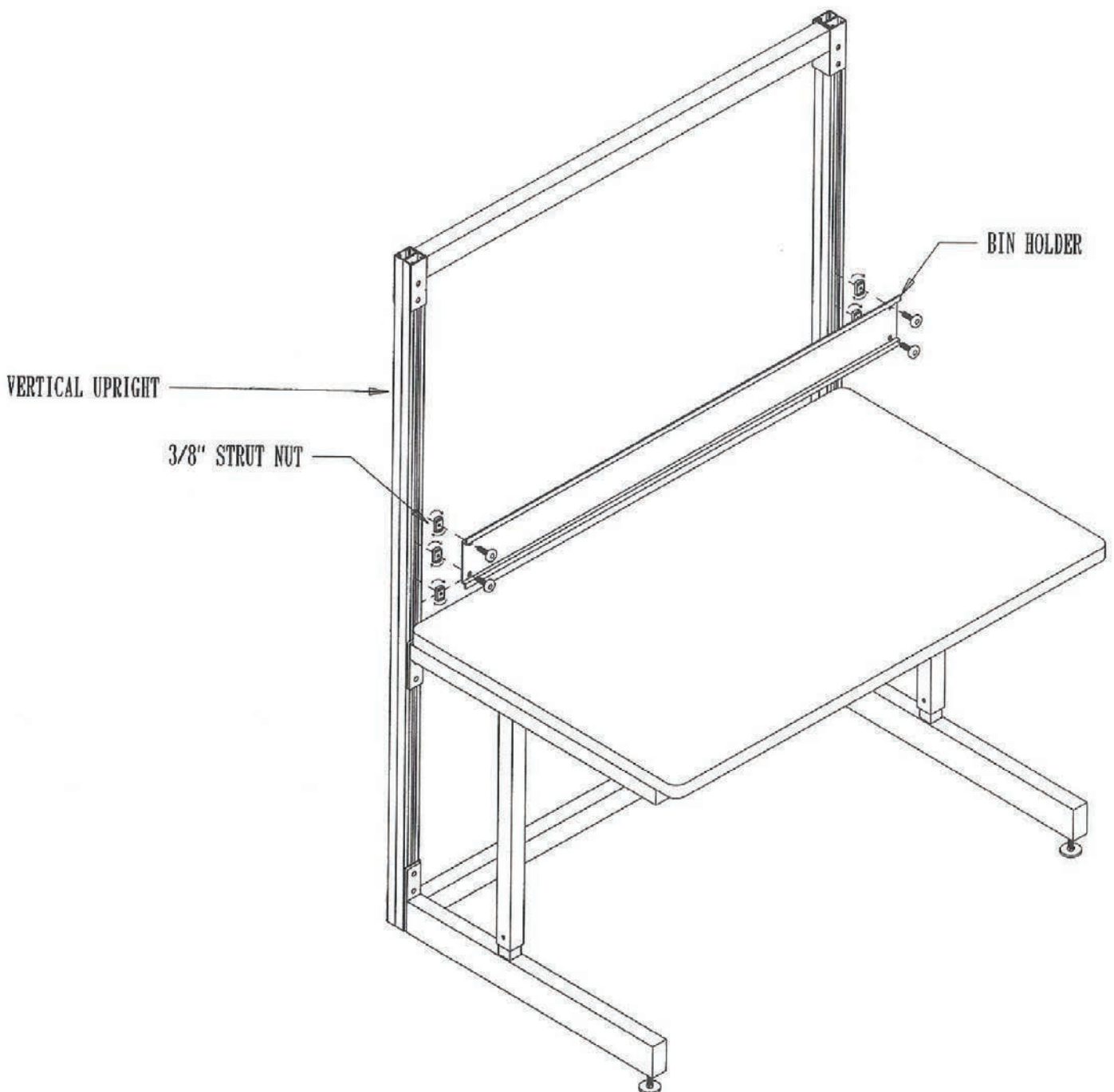
Cantilever Workbench

1. Insert 3/8" x 3/4" round allen head machine screws through shelf assembly as shown, threading the 3/8" strut nuts on approximately 2 turns.
2. Using two (2) people hold shelf assembly up to the uprights, set at the desired height and secure.
3. Repeat all previous steps (if applicable) to complete a double sided unit.



Cantilever Workbench

1. Mount bin holder at the desired height to the vertical uprights using $3/8"$ x $3/4"$ round allen head machine screws and $3/8"$ strut nuts.
2. Repeat the above step (if applicable) to complete a double sided unit.



Cantilever Workbench

1. Secure the electrical strip to the ESMR as shown using the 6/32" x 3/8" round head machine screws and 6/32" hex nuts.
2. Mount the ESMR assembly to the vertical uprights with 3/8" x 3/4" round allen head machine screws and 3/8" strut nuts.
3. Repeat steps 1 and 2 (if applicable) to complete a double sided unit.

