

User Manual

Manual de Usuario

Manuel de l'Utilisateur

Customer Service
US: 1-800-645-2986

Servicio de atención al Cliente
US: 1-800-645-2986

Service à la clientèle
Canada: 888-645-2986

ELECTRIC PALLET TRUCK

Model 988294



Note: Owner/Operator must read and understand Instruction Manual before using the product.

TABLE OF CONTENTS

1. Introduction	2
2. Main Parameters.....	3
3. Safety Warnings.....	4-6
4. Operation Instructions.....	7-11
5. Battery Charging.....	11-12
6. Inspection And Maintenance	12-13
7. Circuit and Hydraulic Diagrams	13
8. Replacement Parts	14
9. Structure and Parts List.....	15-29



1. Introduction

1.1 Introduction

Become familiar with the location and function of all controls before operating the truck. Do not use this truck unless you have been trained and authorized to do so. All information, specifications, and illustrations in this manual are based on the latest data available at the time of publication. Our company reserves the right to make changes or improvements at any time without notice.

With proper operation and scheduled maintenance, this pallet truck should provide years of productive service.

1.2 Special Applications

The truck is designed for indoor use only.

Before using this truck in any special application, contact customer support for correct procedures.

Examples of special applications are as follows:

- Cold storage
- Corrosive environments
- Hazardous environments

1.3 Modifications And Additions

Modifications and additions that affect capacity and safe operation shall not be performed by the customer without the prior written approval of our corporation. Capacity, operation and maintenance instruction plates, tags and decals shall be changed accordingly.

ELECTRIC PALLET TRUCK

2. Main Parameters

2.1 Capacity Plate

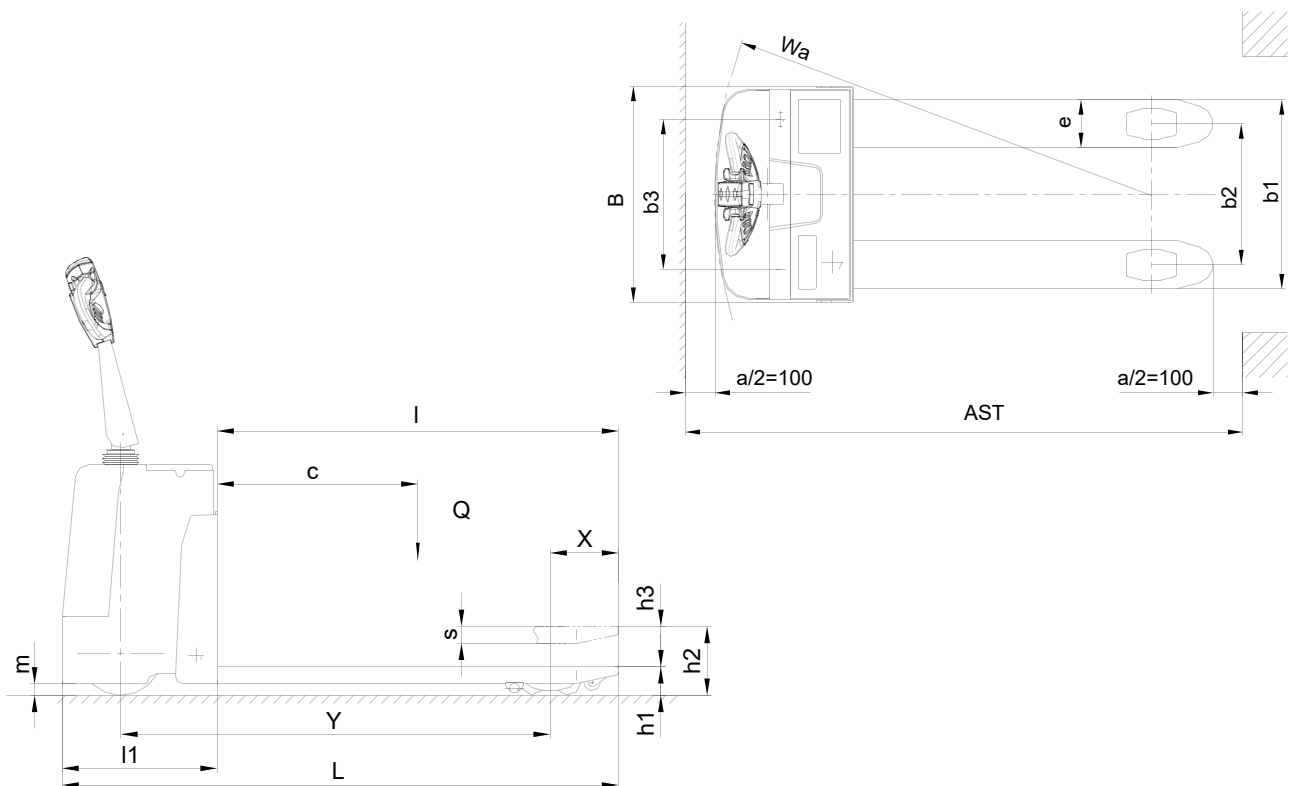
Capacity plate information:

The capacity plate is on the truck. It contains:

- Capacity information
- Truck weight (without battery or load)
- Truck dimensions

2.2 Main Parameters

Load Capacity Q	kg	2000	Gradability	4%	---
			Fork Dimensions (s/e/l)	mm	50/160/1195
Max Fork Height h2	mm	193	Balancing Wheel	mm	Ø75x35
Load Center C	mm	600	Front Wheel	mm	Ø74x93
Min Height of Forks h1	mm	75	Driving Wheel	mm	Ø190x70
Overall Width B	mm	723	Travel Speed, Loaded/ Unloaded	Km/h	2.5/3.5
Overall Length L	mm	1715	Driving Motor	w	850
Wheel Base Y	mm	1280	Lift Motor	w	840
Min Steering Radius Wa	mm	1465	Battery	V/Ah	12/45*4
Overall Width of Forks b1	mm	630	Net Weight	kg	255



3. Safety Warnings

3.1 Introduction

Safe operation of the truck depends upon the following:

- The operator's knowledge, skill and training
- Equipment maintenance
- The operator's high regard for personal safety and the safety of others
- A safe and suitable working environment

3.2 Safety Guidelines

Read and understand the following safety guidelines for maximum safe operation of this electric pallet truck.

- Read and obey all warnings and instructions contained in this manual.
- Operate this pallet truck only from the designated operating position.
- Never carry passengers.
- Never let anyone stand on or ride the forks.
- Drive the pallet truck safely. Always keep it under control.
- If you lose control of the pallet truck, let go of the control handle and quickly move away from the pallet truck.
- Elevate the lifting mechanism only to pick up a load. Stunt driving and horseplay are dangerous to personnel and equipment, and are not permitted.
- Do not overload the truck. Check the capacity plate for load weight information.
- Operate on a flat, smooth surface.
- Start, stop, change direction, travel, and brake smoothly. Slow down for turns and uneven or slippery surfaces that could cause the truck slide or tip. In any application, always approach and leave the aisle slowly.
- Be aware of objects protruding from racks, shelves and walls that can cause injury or come into contact with the truck.
- Operate the truck slowly and in an open area until you become thoroughly familiar with the pallet truck controls.
- Use extreme care when traveling without a load. Excessive speed with abrupt turns or on uneven surfaces may cause the truck to tip when empty as well as when loaded.



ELECTRIC PALLET TRUCK

3.2 Safety Guidelines (continued)

- Examine the load before moving to ensure that it is securely and safely loaded.
- Always look in the direction of travel. Keep a clear view.
- When the load interferes with visibility, face the direction of travel with the load trailing.
- Do not handle unstable or loosely-stacked loads. Use special care when handling long, high, or wide loads.
- Obey all applicable traffic regulations. Yield the right-of-way to pedestrians. Drive on the right unless your work area follows different rules.
- Always stop the pallet truck and sound the horn when approaching crossing aisles, when entering or exiting an aisle, or when visibility is obstructed.
- Keep your hands and fingers inside the protected area of the control handle.
- Ensure there is enough light.
- Never drive this pallet truck up to anyone.
- If you leave the electric pallet truck unattended, fully lower the forks, shut the power off, remove the key from the optional key switch (if your truck has this option), and disconnect the battery.

3.3 Power Equipment Can Be Hazardous

- Any power equipment can be hazardous.
- Accidents may occur when power industrial equipment is in the hands of untrained or unauthorized operators. This electric pallet truck is no exception.
- Our company is constantly aware of safety and builds reliable products. By following the recommendations in this manual, you can help reduce personal injury and property damage.
- Before operating this pallet truck, read and understand this manual. Notify your supervisor if you have any concerns or questions. Carefully review all safety decals on the truck.

3.4 Pedestrians

Pay attention to pedestrians at all times. Many other people in your area of facility might not be familiar with this truck and how it operates. Always yield the right-of-way to pedestrians. Never drive this pallet truck up to anyone, particularly someone standing next to a solid object like a wall or workbench.

ELECTRIC PALLET TRUCK

3.5 Travel

Operate this electric pallet truck at an authorized speed consistent with conditions. Always maintain a safe distance from other trucks. Keep the pallet truck under control at all times so you can stop in an emergency. Look in the direction of the path of travel, and keep a clear view. Stop the pallet truck and sound the horn when crossing aisles or when visibility is obstructed. Keep to the right unless conditions dictate otherwise. Do not pass another pallet truck traveling in the same direction at intersections, blind spots, or other dangerous locations. Avoid making sudden starts, quick stops or turns, particularly when operating with stacked loads. Slow down for rough, wet or slippery floors, and avoid running over any objects on the floor.

3.6 Power Equipment

Dockboards must be strong enough to carry the weight of the pallet truck, the weight of the operator and the load. The carrying capacity should be plainly marked on the dockboards. Dockboards should be securely anchored or equipped with devices to prevent slipping. The sides of the dockboards should be turned up at right angles to prevent the electric pallet truck from running over the edge. Dockboards should be designed and maintained so the edges have substantial contact with the carrier and the dock or loading platform to prevent rocking or sliding. Handholds, or other effective means, should be provided to permit safe handling. Positive positioning, such as wheel chocks, should be provided to prevent railroad cars or highway trucks from being moved while dockboards are in position.

3.7 Elevators

Check with your supervisor before you use this electric pallet truck near or in an elevator.

3.8 Lifting And Loading

Follow these instructions when lifting and loading:

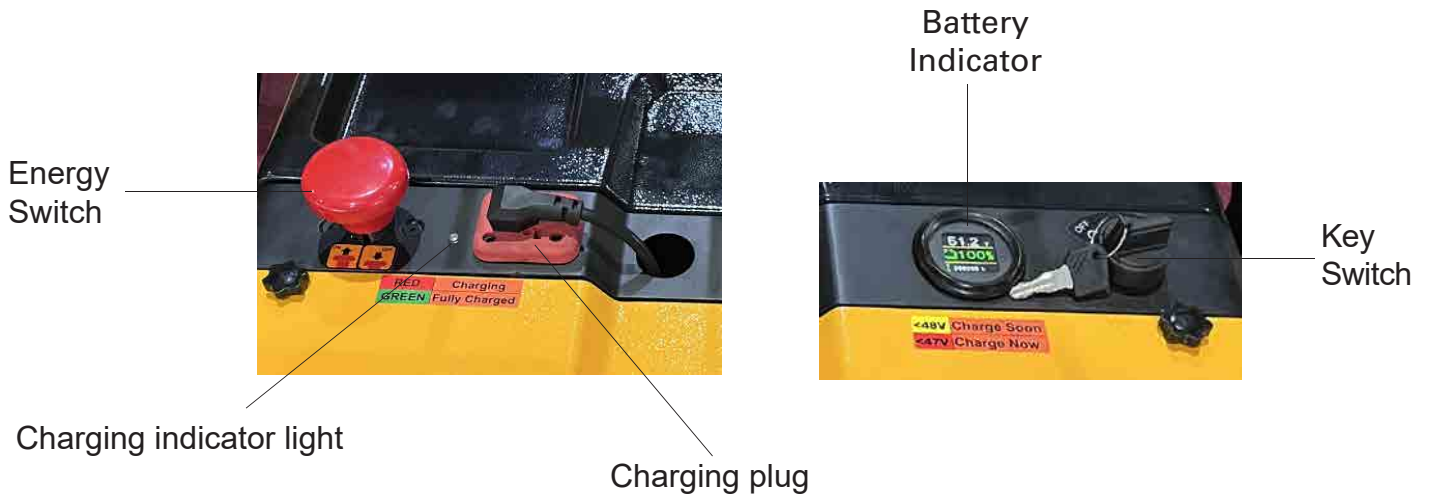
- Move only loads that are securely and safely loaded
- Place forks under the load as far as possible
- When the electric pallet truck is empty, travel with the forks fully lowered
- When moving bulky loads that block rearward visibility, drive the electric pallet truck with the load trailing
- Carry the load as low as is safely possible

ELECTRIC PALLET TRUCK

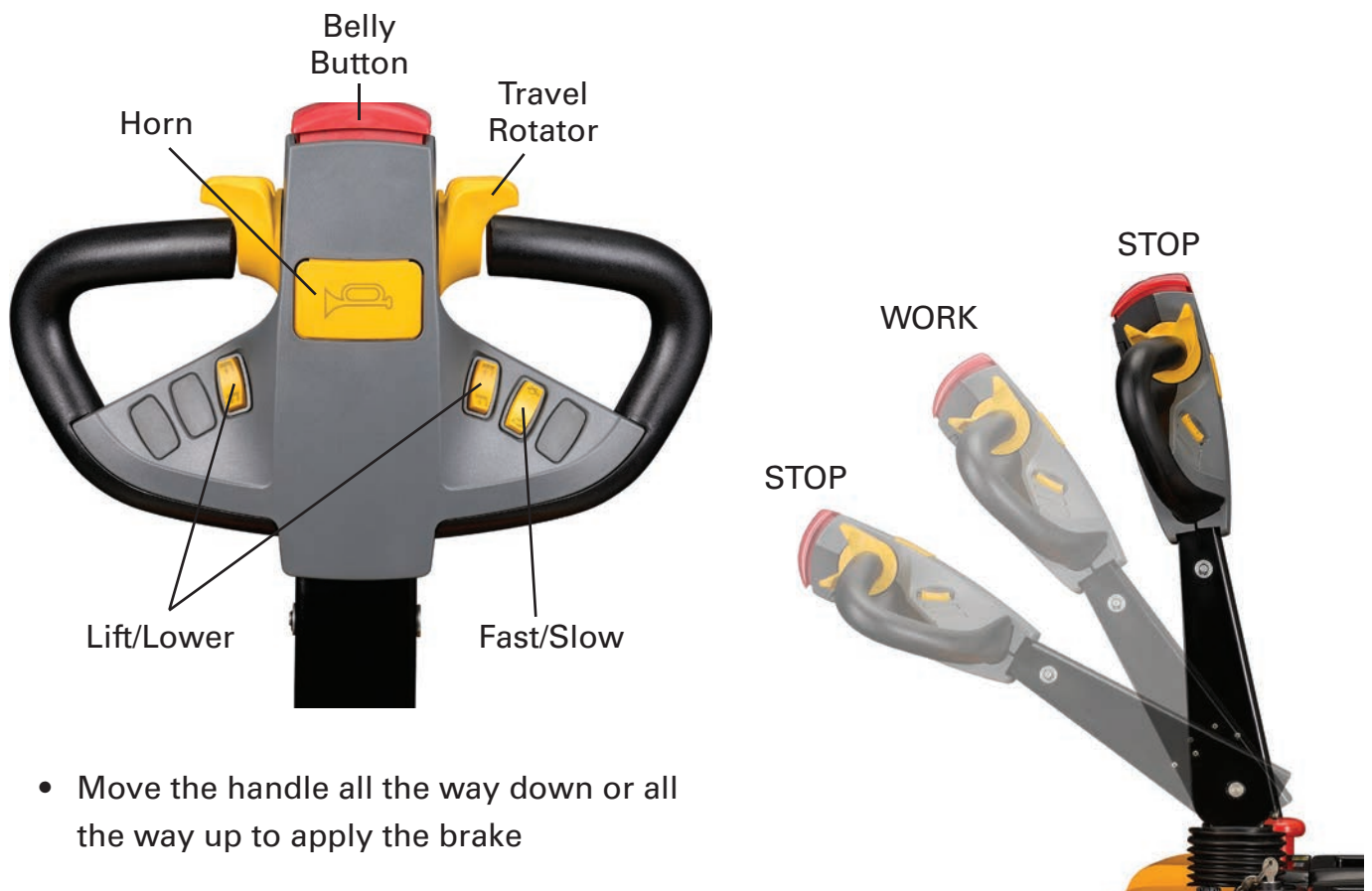
4. Operation Instructions

4.1 Power On And Off

- Turn on the truck by turning the key to right: Power on
- Turn off the truck by turning the key to left: Power off
- Always turn off the truck when leaving the truck



4.2 Operation Handle

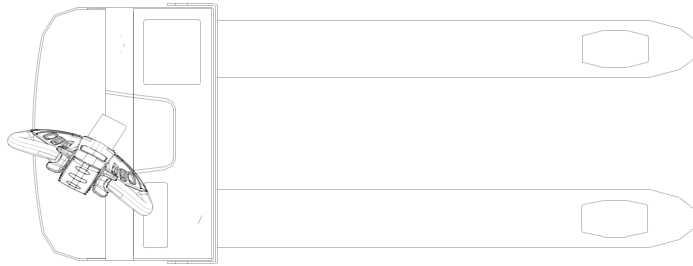


- Move the handle all the way down or all the way up to apply the brake

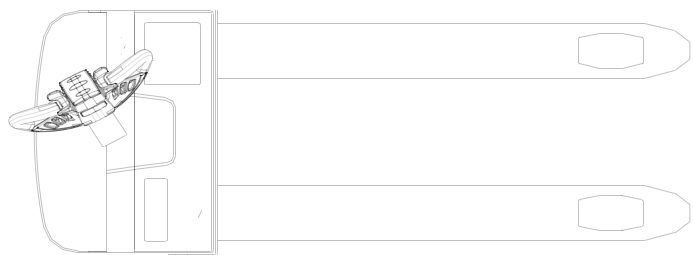
ELECTRIC PALLET TRUCK

4.3 Steering

Control steering by moving the control handle from side to side



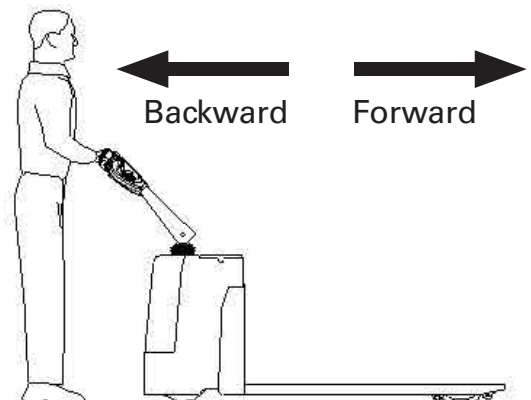
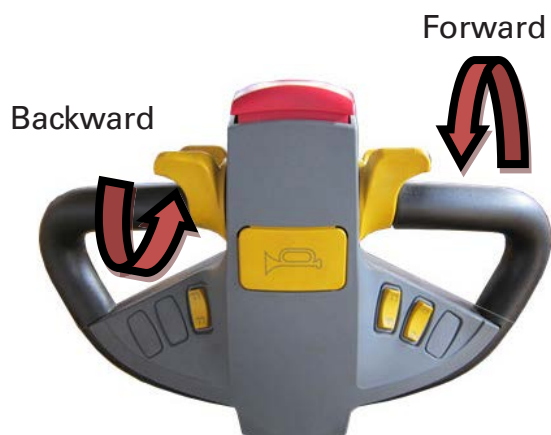
Steer Right



Steer Left

4.4 Traveling

Rotate the throttle button in the direction you want to travel. The farther you rotate the throttle button from the neutral position, the faster the truck will travel.



4.5 Emergency Reverse Button

If you accidentally hit the reverse button while working, the truck will stop and then move in the direction of the forks. Be careful-the reverse button cannot prevent injuries.

Emergency Reverse Button



ELECTRIC PALLET TRUCK

4.6 Emergency Switch

Pushing down the emergency switch will cut the power source of the machine, making it stop immediately.



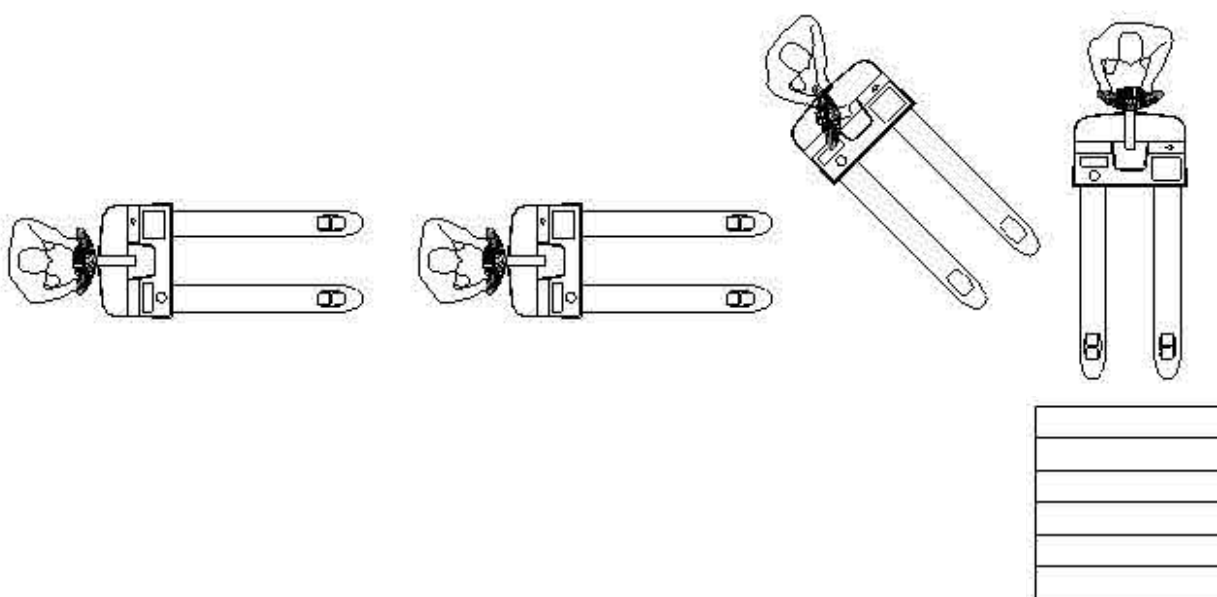
Press down to cut off power



4.7 Entering A Pallet

Follow these steps when entering a pallet with a pallet truck:

1. Approach the pallet from either side with the nearest fork about 3 in (76mm) out in the aisle.
2. When the fork is just forward of the pallet edge, stop.
3. Turn the control handle to swing the front of the pallet truck out into the aisle until the forks begin to enter the pallet at an angle.
4. Continue maneuvering the pallet truck, gradually returning the control handle straight ahead until the pallet truck faces the pallet squarely.
5. Drive the pallet truck forks-first until the pallet is completely on the forks. Ensure that the load wheels are not resting on any of the boards on the bottom of the pallet.
6. Lift the pallet just enough to raise it off the floor.
7. Change direction and carefully swing the pallet truck out into the aisle.

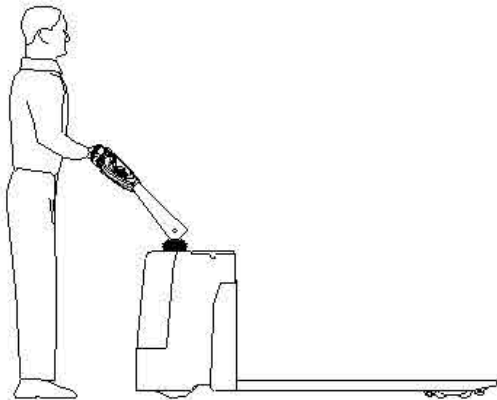


4.8 Traveling With A Load

Always look in the direction of travel. When transporting loads over a long distance, always travel in a forward direction with the forks trailing. Never enter a trailer unless its wheels are checked and the trailer is properly jacked.

When traveling with a load, follow these instructions:

- Ensure the load on the forks is stable
- Travel at the safest speed that conditions allow, and always within authorized facility speed limits. Operate the pallet truck only at a speed that permits the truck to stop safely at all times and under all travel conditions.
- Start, steer, change direction, and brake smoothly. Slow down for turns and uneven or slippery surfaces to avoid causing the pallet truck to slide or tip.
- Keep a clear view and watch out for obstructions. When the load interferes with visibility, travel with the load trailing.
- Check the condition of all floors, dockboards, semi-trailer beds, ramps, elevators, and so on, to ensure they can safely support the pallet truck and its load.



- Observe all traffic regulations. Yield the right-of-way to pedestrians. Stop and sound the horn at crossing aisles and whenever vision is obstructed.
- When operating in narrow aisles, stay as far away from stockpiles as possible in order to allow the pallet truck to swing clear.
- Never cross railroad tracks except at approved floor grade crossings. Cross at an angle perpendicular to the tracks.

ELECTRIC PALLET TRUCK

4.9 Positioning And Unloading

To position and unload the pallet truck, follow these steps:

1. Slowly maneuver the pallet truck with the load to the required area.
2. Place the load squarely and evenly to make use of all available space.
3. Lower the forks completely.
4. Drive the pallet truck slowly away to withdraw the forks.

5. Battery charging

5.1 Battery Indicator

The lighted bar shows how much charge is left in the battery. Check battery indicator regularly.



Sufficient



Insufficient. Battery charging is required but not urgent.



Almost depleted. Battery charging is urgent.

5.2 Battery Procedures

The truck is mounted with two maintenance-free 12V batteries. The battery charger is mounted inside the truck. For your safety, observe the following precautions when working with or around pallet truck batteries:

- Read, understand and follow procedures, recommendations, and specifications in the battery and battery charger manufacturers' manuals.
- Do not smoke, use open flames, or use spark-producing devices near batteries.
- Charge batteries in a well-ventilated area to avoid hydrogen gas concentration.
- Do not break live circuits at the battery terminals, because a spark usually occurs at the point where a live circuit is broken.
- To avoid shorts and sparks, keep plugs, terminals, cables, and receptacles in good condition.

ELECTRIC PALLET TRUCK

5.3 Battery Removal And Installation

Take precautions not to jam or cut the battery cables during installation of the battery, as this could result in a short that may cause a fire or a battery explosion.

- Disconnect the battery connectors/cables from the truck.
- Ensure the removed battery is properly stored.
- When installing a battery, always ensure that it is fully charged before operating the truck

5.4 Charging Process

1. Press down the emergency switch on the keypad and turn the key switch to OFF.
2. Open the battery box cap board and find the input power cord of the charger.
3. Connect the power plug of the charger into the outlet of the local power supply. This will automatically turn the charger on, and it will run at a rate commensurate with the requirements of the batteries. The charger will automatically control the procedure. When the batteries are fully charged, the charger will only supply enough current to maintain the batteries' charge.

6. Inspection And Maintenance

6.1 Inspection And Maintenance Schedule

Item	Component	Check	Time Interval		
			Daily or 8 Hours	Two Months or 250 Hours	Annually or 1500 Hours
1	Battery	Check cleanliness and exterior.	√		
		Check charging condition.	√		
2	Battery Connector	Check connector. Ensure all powered functions shut down when disconnected.	√		
		Ensure the battery is properly installed.	√		
3	Brake	Verify the drive motor does not run while the brake is applied.	√		
		Check that the control handle returns to the vertical position when released.	√		
		Check the brake disc for wear. Replace if necessary.			√
4	Decals	All decals must be in place and legible.	√		
5	Drive Unit	Check for oil leaks. If leaks are present, check to see if the oil level is low. If so, identify the cause and fill to appropriate level.	√		
6	Drive Wheel	Check the tightness of the screws on the drive wheel.		√	
7	Electrical System	Visually inspect all cable for damage and replace as needed.		√	
9	General	Check the speed and directional controls.	√		
		Check the steering operation.	√		
		Check the lifting and lowering functions.	√		
		Check the operation of the Emergency Reverse Button.	√		
		Check the Operation of the Key Switch.	√		
		Note any unusual noises during operation, and report it to a supervisor or maintenance personnel right away.	√		
		Check for loose hardware. Tighten if necessary.		√	
10	Lift Cylinder	Check the lift cylinder for leaks.		√	
11	Wheels	Check the condition of the drive wheel and load wheels. Remove any steel chips and foreign material to prevent wheel damage.	√		

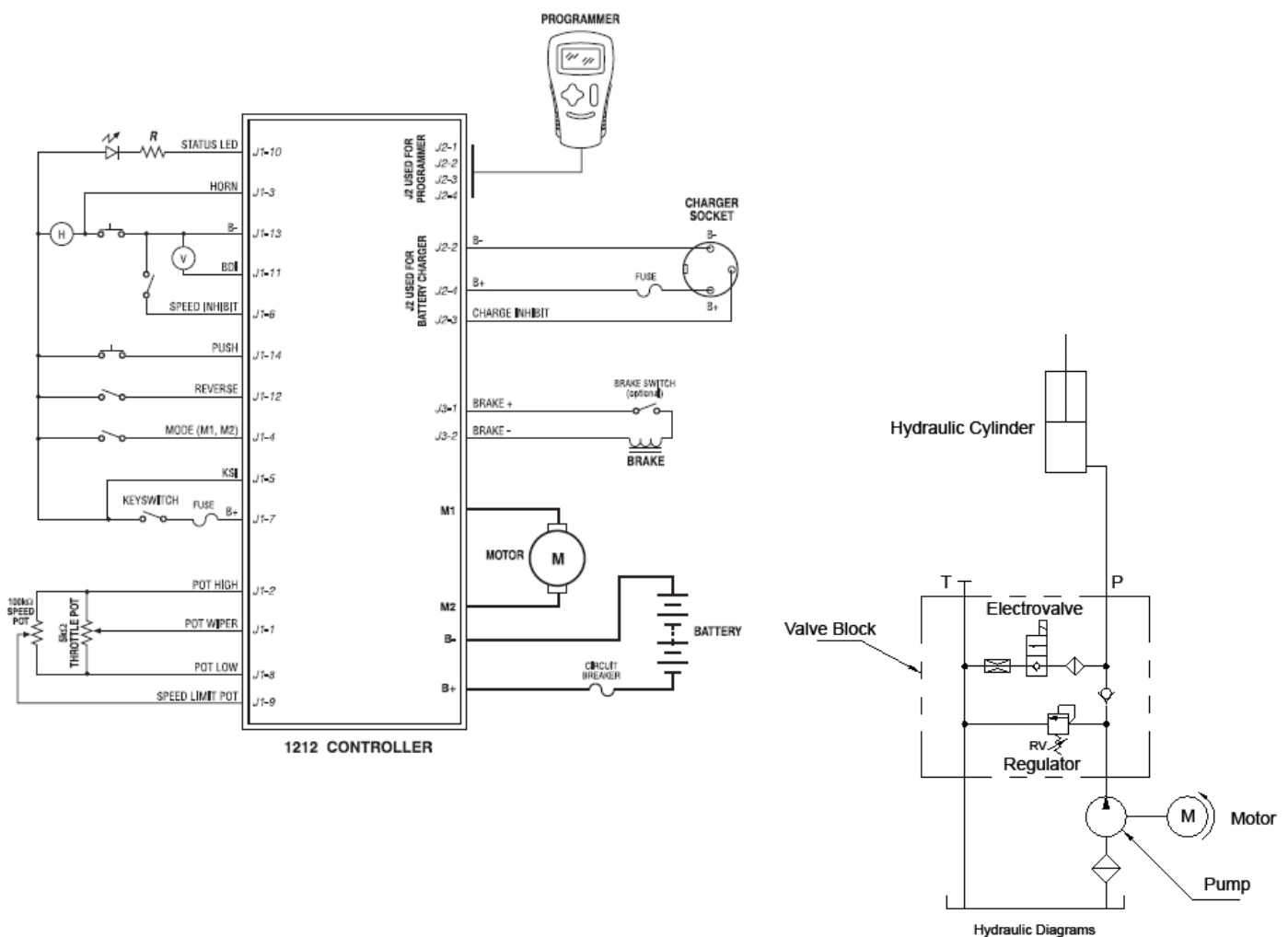
ELECTRIC PALLET TRUCK

6.2 Change Oil

It is advised to change the hydraulic oil every 6 months or every 600 hours. Change the oil every 6 months even if the hours of use are less than 600. To change the oil: Make sure the forks are at the lowest position. Disassemble the tube joint at the lower part of cylinder and put it in a container. Operate the lift handle to work the pump and exhaust the oil. If the pallet truck is used in a low-temperature environment, lift and lower two or three times after adding hydraulic oil to purge the system. If the lift height is insufficient, replenish oil. Check the hydraulic oil level again and add more if needed.

7. Circuit And Hydraulic Diagrams

Electric pallet trucks are controlled by the controller. The controller has step-free, speed change, quick start, emergency reverse, brake, etc. Furthermore, it has protection functions of over voltage, over current, under voltage, reverse brake and more.



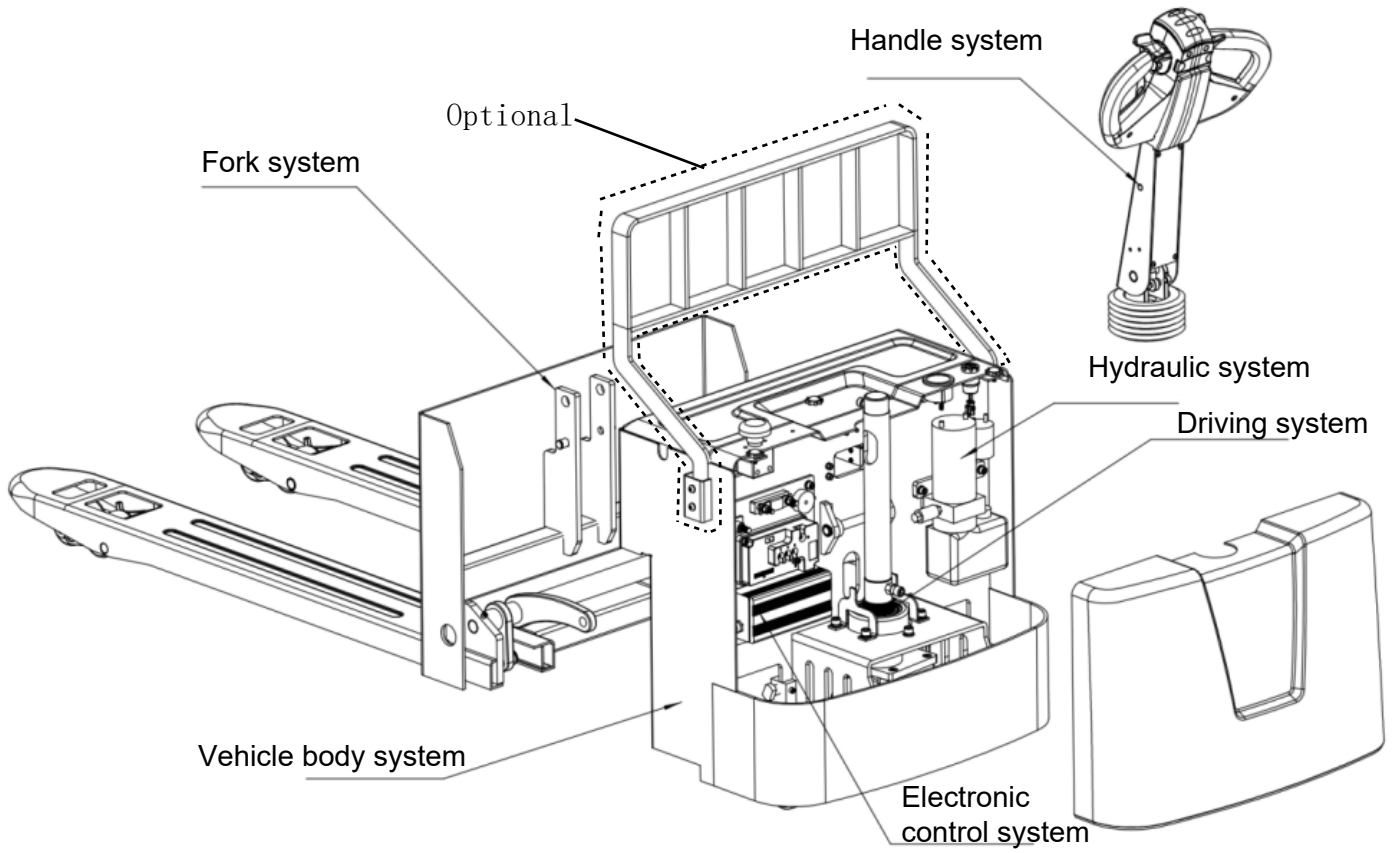
ELECTRIC PALLET TRUCK

8. Replacement Parts

Item	Part No	Description	Material	Position	Quantity
1	1002505	Fuse		Electric Control System	1
2	1002006	Wearing strip		Cylinder Assembly	1
3	1002009	Sealing ring		Cylinder Assembly	1
4	1002914	Balance wheel		Auxiliary wheel assembly	1
5	20019	Bearing wheel		Fork system	1
6	3000817	Framework oil seal		Drive wheel assembly	1
7	40011	Pneumatic Spring		Handle Part	1
8	40014	copper sleeve		Handle Part	2
9	4000119	Microswitch		Handle Assembly	1

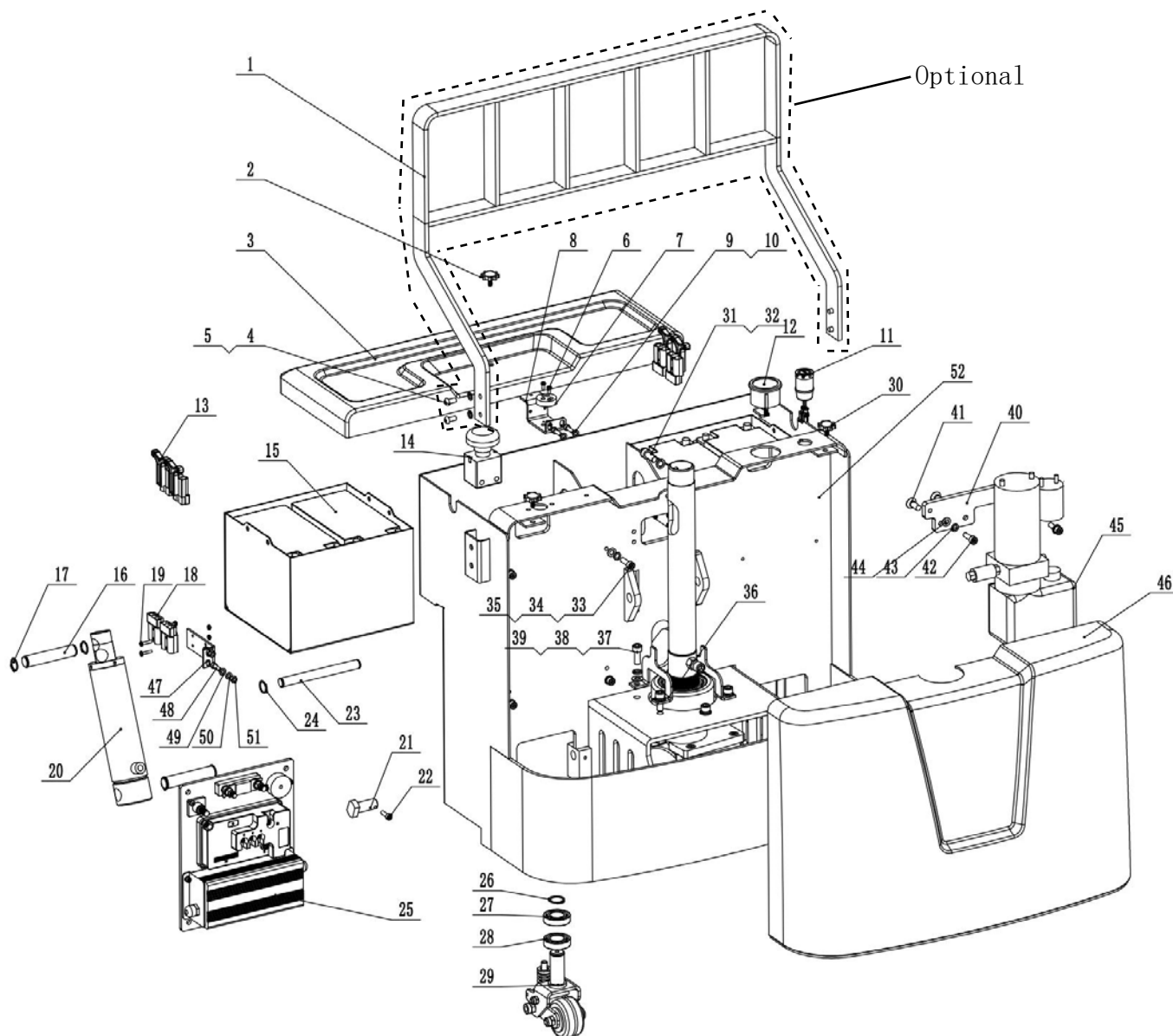
ELECTRIC PALLET TRUCK

9. Structure and Part List



ELECTRIC PALLET TRUCK

9.1 Vehicle body system



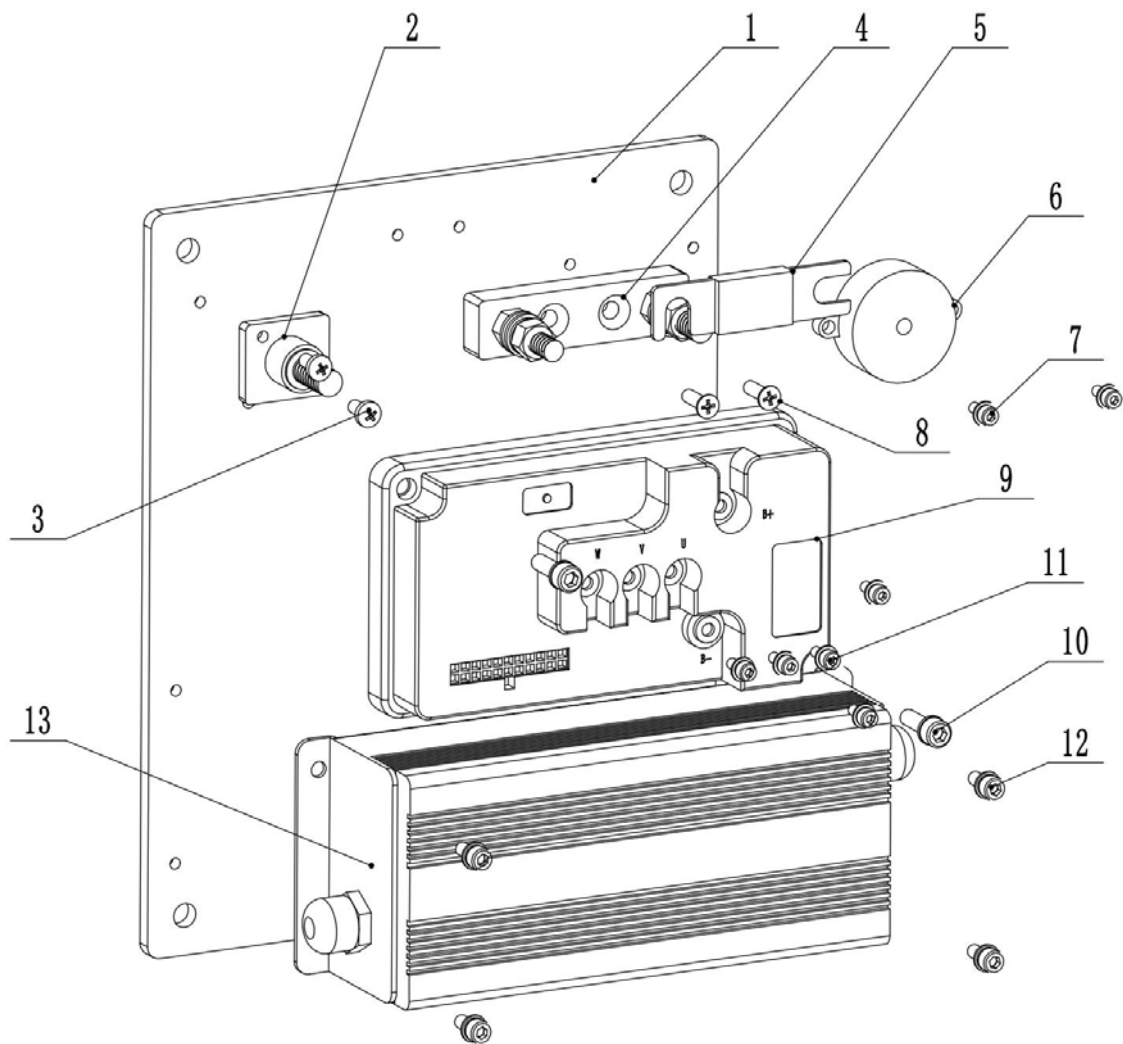
Item	Part No	Description	Qty	Remarks
1	10001	Cargo retainer weldment	1	Optional
2	10002	Spiral handle M6	1	
3	10003	Battery box cover	1	
4	10004	Half round head screw M8	4	Optional
5	10005	Spring washer M8	4	Optional

ELECTRIC PALLET TRUCK

Item	Part No	Description	Qty	Remarks
6	10006	Cross pan head screw M4	2	
7	10007	Nylon plug socket	1	
8	10008	Hood seat	1	
9	10009	Hexagon socket head cap screw M6*25	2	
10	10010	Spring washer Ø6	2	
11	HR10017	Key switch	1	
12	HR10019	Circular electricity meter	1	
13	10013	Anderson plug-in (with handle)	4	
14	HR10020	Emergency stop	1	
15	HR10015	12vA Lead acid battery	4	
16	10016	Oil cylinder Pin shaft Ø20*106	2	
17	10017	Circlip for shaft Ø20	4	
18	10018	Anderson plug-in (without handle)	4	
19	10019	Cross pan head screw M5*30	8	
20	10020	Oil cylinder Assembly	1	
21	10021	Nut pin shaft	2	
22	10022	Hexagon socket head cap screw M5*25	2	
23	10023	Connecting shaft Ø16*160	1	
24	10024	Circlip for shaft Ø16	2	
25	10025	Electric control part	1	
26	10026	Circlip for shaft Ø25	2	
27	10027	Deep groove ball bearing 6005	2	
28	10028	Deep groove ball bearing 6005	2	
29	10029	Auxiliary wheel assembly	2	
30	10030	Spiral handle M6	2	
31	10031	Hexagon socket head cap screw M10*20	1	
32	10032	Spring washer Ø10	1	
33	10033	Hexagon socket head cap screw M8*20	4	
34	10034	Spring washer Ø8	4	
35	10035	Plain washer Ø8	4	
36	10036	Limit plate (left and right)	2	
37	10037	Hexagon socket head cap screw M8*25	5	
38	10038	Spring washer Ø8	5	
39	10039	Plain washer Ø8	5	
40	10040	Pump station connection plate	1	
41	10041	Hexagon socket countersunk head screw M10*20	2	
42	10042	Hexagon socket head cap screw M8*25	2	
43	10043	Spring washer Ø8	2	
44	10044	Plain washer Ø8	2	
45	10045	48v Hydraulic unit assembly	1	
46	10046	Electrical cover	1	
47	10047	Socket fixing plate	2	
48	10048	Hexagon socket countersunk head screw M6*20	2	
49	10049	Spring washer Ø6	2	
50	10050	Plain washer Ø6	2	
51	10051	Hex nut M6	2	

ELECTRIC PALLET TRUCK

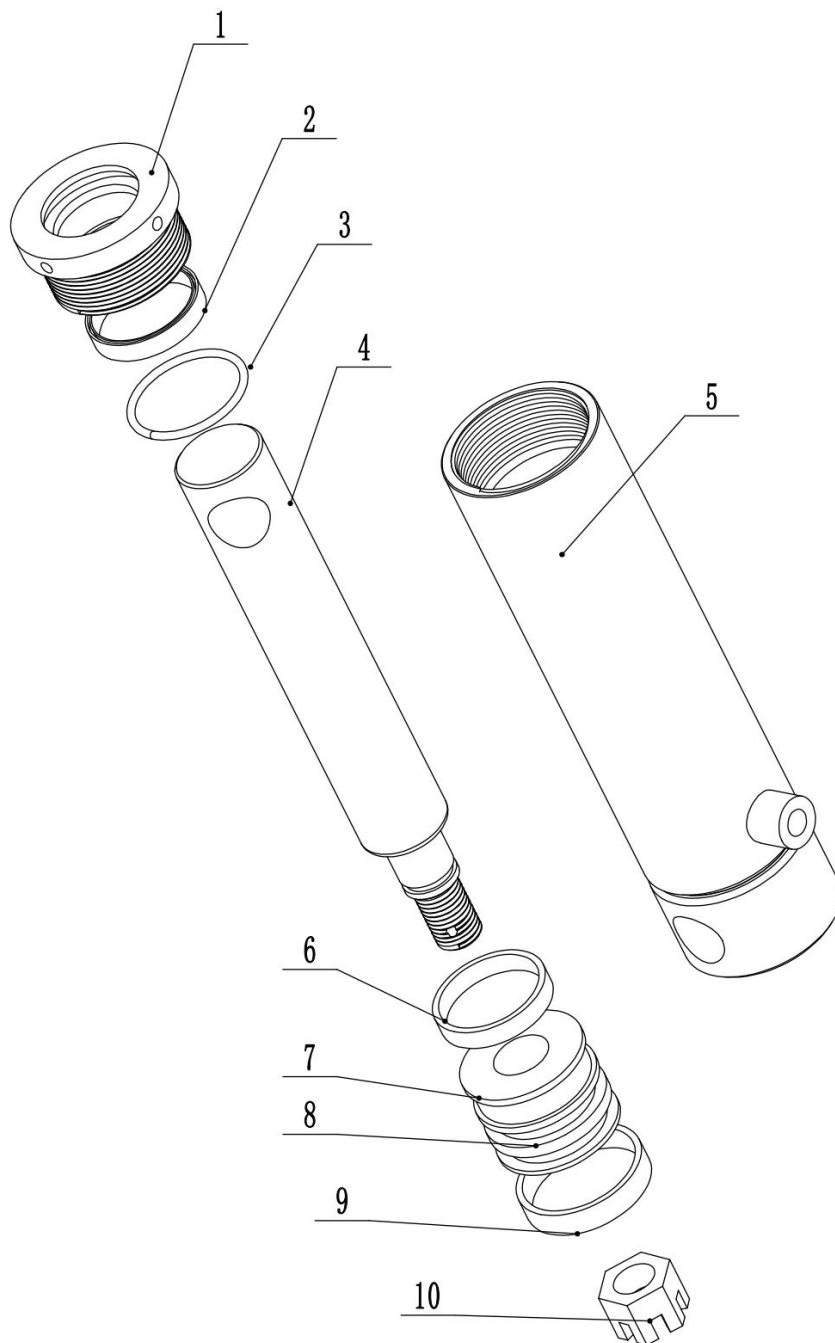
9.2 Electric control system



Item	Part No	Description	Qty	Remarks
1	1002501	Electric control installation plate	1	
2	1002502	Terminal	1	
3	1002503	Cross pan head screw M5*12	2	
4	1002504	Fuse holder	1	
5	1002505	Fuse 100A	1	
6	HR1203	48v Horn	1	
7	1002507	Hexagon socket head cap screw M5*12 With combination washer	2	
8	1002508	Cross countersunk head screw M5*12	2	
9	HR1202	48v Controller	1	
10	1002510	Hexagon socket head cap screw M6*25	2	
11	1002511	Hexagon socket head cap screw M3*12 With combination washer	5	
12	1002512	Hexagon socket head cap screw M5*15 With combination washer	4	
13	HR1201	Built-in charger 48v6A	1	

ELECTRIC PALLET TRUCK

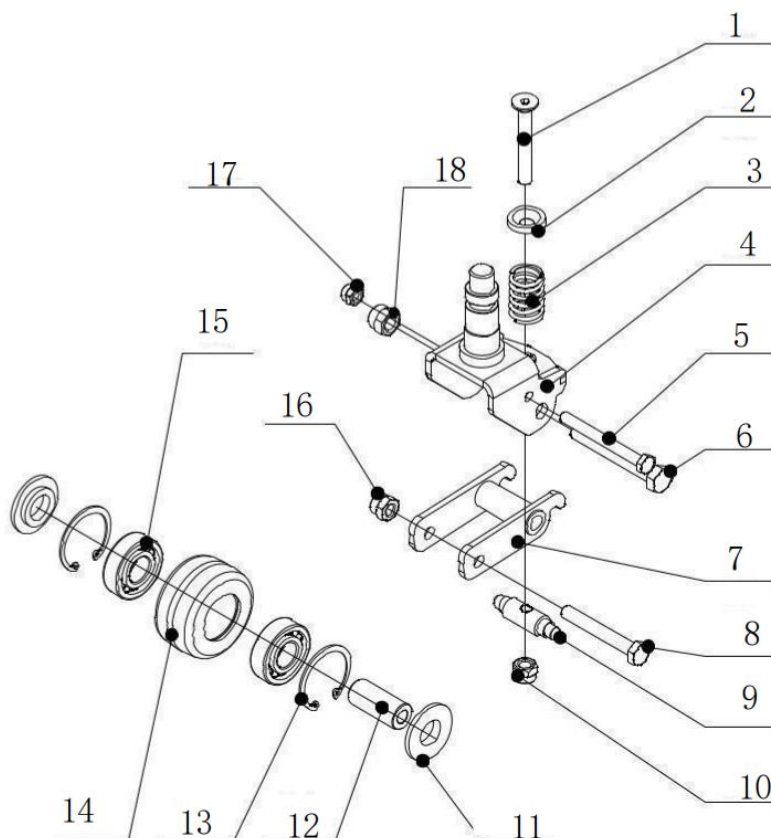
9.3 Oil cylinder Assembly



Item	Part No	Description	Qty	Remarks
1	1002001	Cylinder cap	1	
2	1002002	Dust ring	1	
3	1002003	O-ring	1	
4	1002004	Piston rod	1	
5	1002005	Cylinder block	1	
6	1002006	Wearing strip	1	
7	1002007	Sealing ring	1	
8	1002008	Piston	1	
9	1002009	Sealing ring	1	
10	1002010	Fixed nut	1	

ELECTRIC PALLET TRUCK

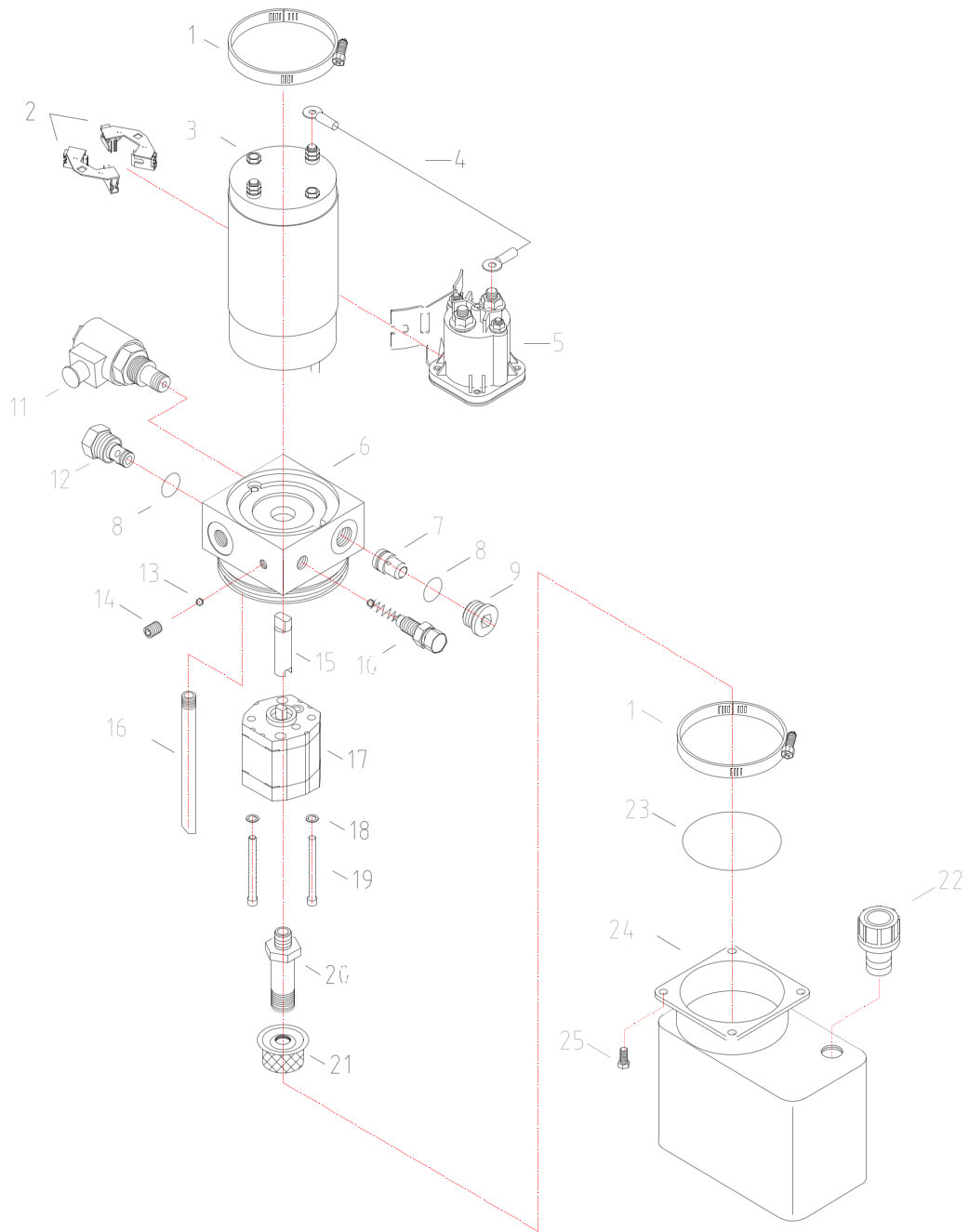
9.4 Auxiliary wheel assembly



Item	Part No	Description	Qty	Remarks
1	1002901	Hexagon socket countersunk head bolt M10*75	1	
2	1002902	Spring pressure plate	1	
3	1002903	Spring	1	
4	1002904	Auxiliary wheel frame	1	
5	1002905	Outer hexagonal bolt M8*80	1	
6	1002906	Outer hexagonal bolt M12*80	1	
7	1002907	Frame plate	1	
8	1002908	Outer hexagonal bolt M10*70	1	
9	1002909	Threaded pin	1	
10	1002910	Locknut M10	1	
11	1029611	Shim	2	
12	1002912	Shaft sleeve	1	
13	1002913	Circlip for hole Ø47	2	
14	1002914	Balance wheel 70*36	1	
15	1002915	Deep groove ball bearing 6204	2	
16	1002916	Locknut M10	1	
17	1002917	Locknut M8	1	
18	1002918	Locknut M12	1	

ELECTRIC PALLET TRUCK

9.5 Auxiliary wheel assembly



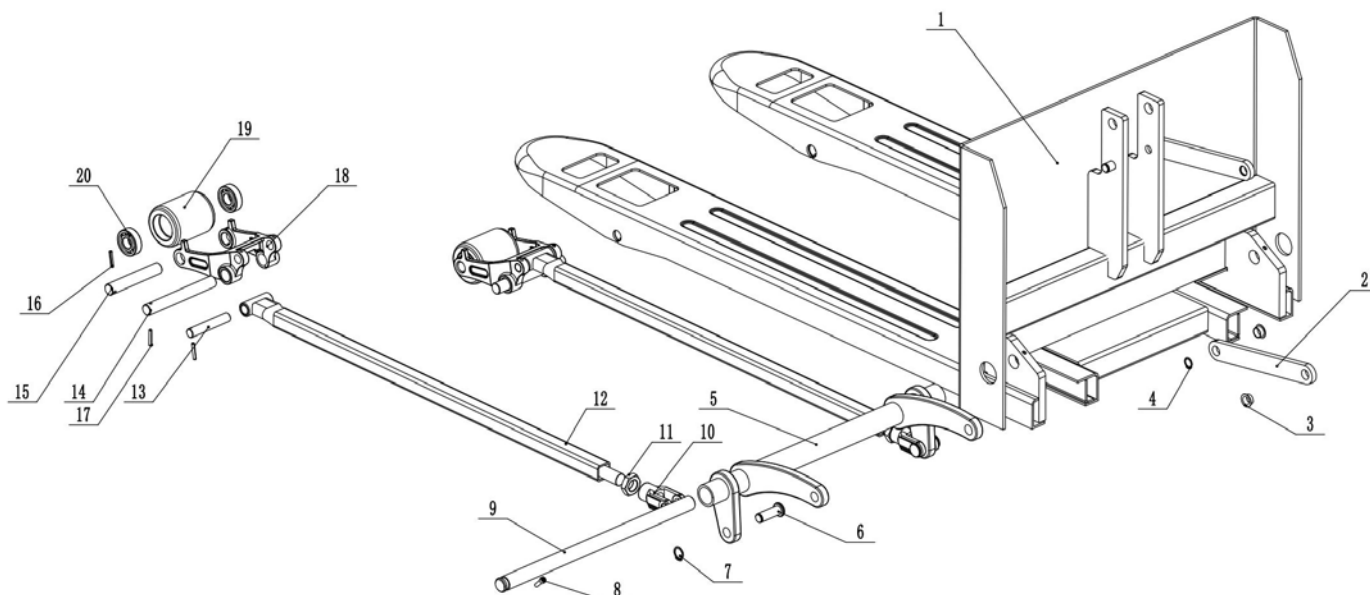
ELECTRIC PALLET TRUCK

9.5 Auxiliary wheel assembly

Item	Part No	Description	Qty	Remarks
1	1004501	Hose Clamp d80	2	
2	1004502	Carbon brush	2	
3	1004503	DC motor 0.8KW/48V(contrary)	1	
4	1004504	Line pencil (I)	1	
5	1004505	Electromagnetic start switch 48V/150A	1	
6	1004506	Connecting valve plate	1	
7	1004507	Throttle valve 2.0	1	
8	1004508	O-rings 16.36x2.21	2	
9	1004509	Hexagonal socket head plug	1	
10	1004510	Safety valve components	1	
11	1004511	Two position two way electromagnetic cartridge valve (48V)	1	
12	1004512	Check valve components	1	
13	1004513	Steel ball 6G20b	1	
14	1004514	Screw M8x8	1	
15	1004515	Connecting shaft	1	
16	1004516	Return pipe	1	
17	1004517	Gear pump 1.0cc/r	1	
18	1004518	Plain washer 5	6	
19	1004519	Screw M5x70	2	
20	1004520	Oil suction pipe	1	
21	1004521	Oil filter (G3/8) 150 mesh/inch	1	
22	1004522	Air filter (G3/8)	1	
23	1004523	O-rings 67.1x3.1	1	
24	1004524	Oil tank 0.7L	1	
25	1004525	Bolt M5x10	4	

ELECTRIC PALLET TRUCK

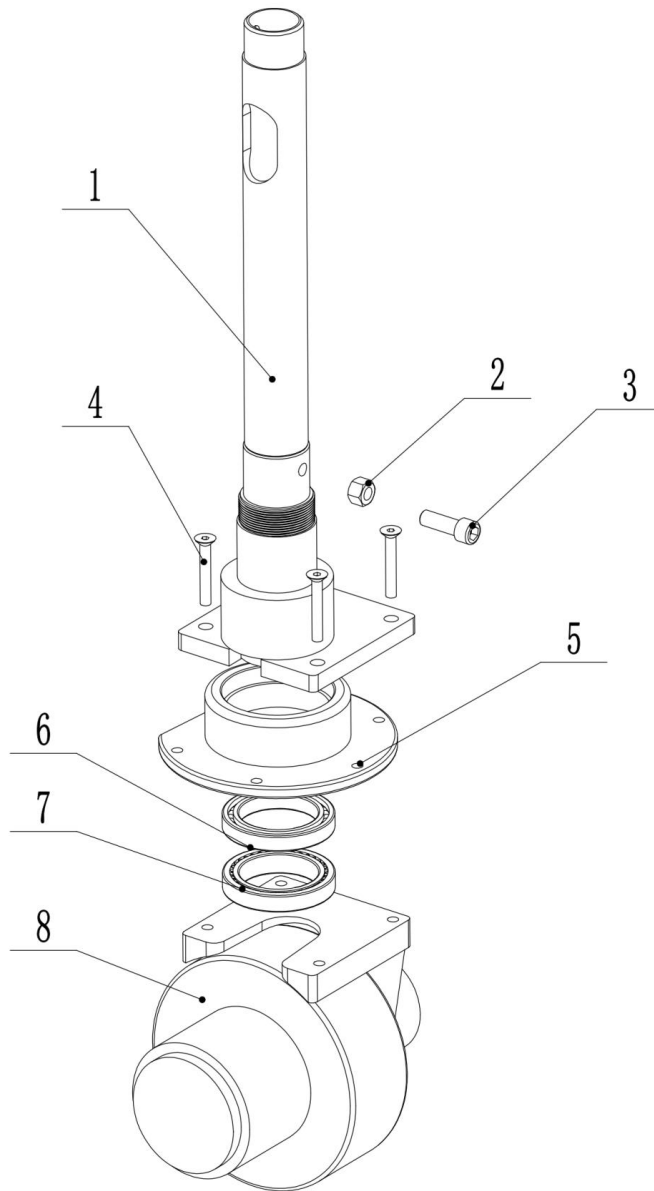
9.6 Fork system



Item	Part No	Description	Qty	Remarks
1	20001	Fork Weldment	1	
2	20002	Connecting rod	2	
3	20003	Shouldered copper sleeve 18/16*10	4	
4	20004	Circlip for shaft Ø16	4	
5	20005	Crank weldment	1	
6	20006	Crank shaft 16*48	2	
7	20007	Circlip for shaft Ø16	2	
8	20008	Stop screw	1	
9	20009	Long axis	1	
10	20010	Open fork	2	
11	20011	Thin hexagonal nut M22*1.5	2	
12	20012	Push rod	2	
13	20013	Push rod pin shaft Ø16*92	2	
14	20014	Arm axis Ø20*160	2	
15	20015	Front axle Ø20*120	2	
16	20016	Spring pin shaft Ø5*35	4	
17	20017	Spring pin shaft Ø5*25	2	
18	20018	Force arm bracket	2	
19	20019	Bearing wheel 74*93	2	
20	20020	Deep groove ball bearing 6204	4	

ELECTRIC PALLET TRUCK

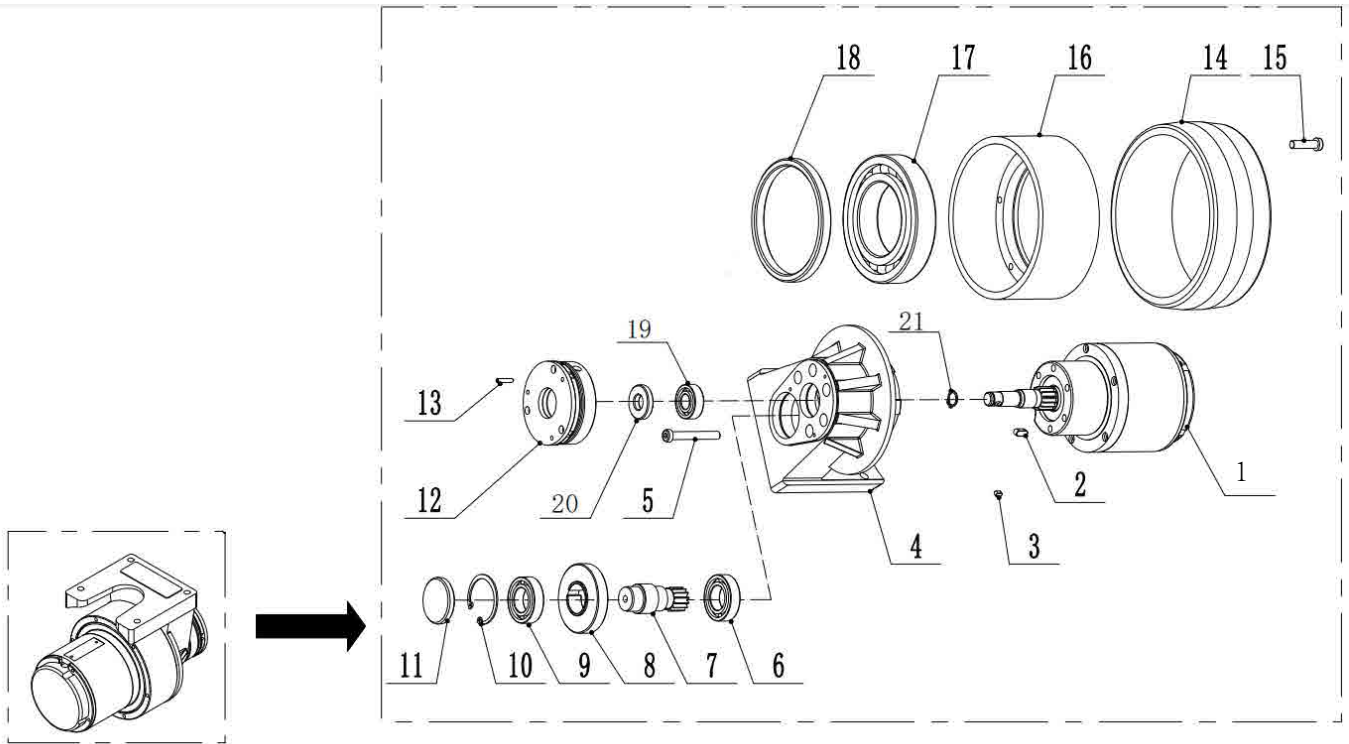
9.7 Drive



Item	Part No	Description	Qty	Remarks
1	30001	Spindle	1	
2	30002	Hex nut M12	1	
3	30003	Stop screw M12*35	1	
4	30004	Hexagon socket countersunk head screw M10*25	4	
5	30005	Lower bearing seat	1	
6	30006	Deep groove ball bearing 61912	1	
7	30007	Deep groove ball bearing 6912	1	
8	HR30007	48v Drive wheel assembly	1	

ELECTRIC PALLET TRUCK

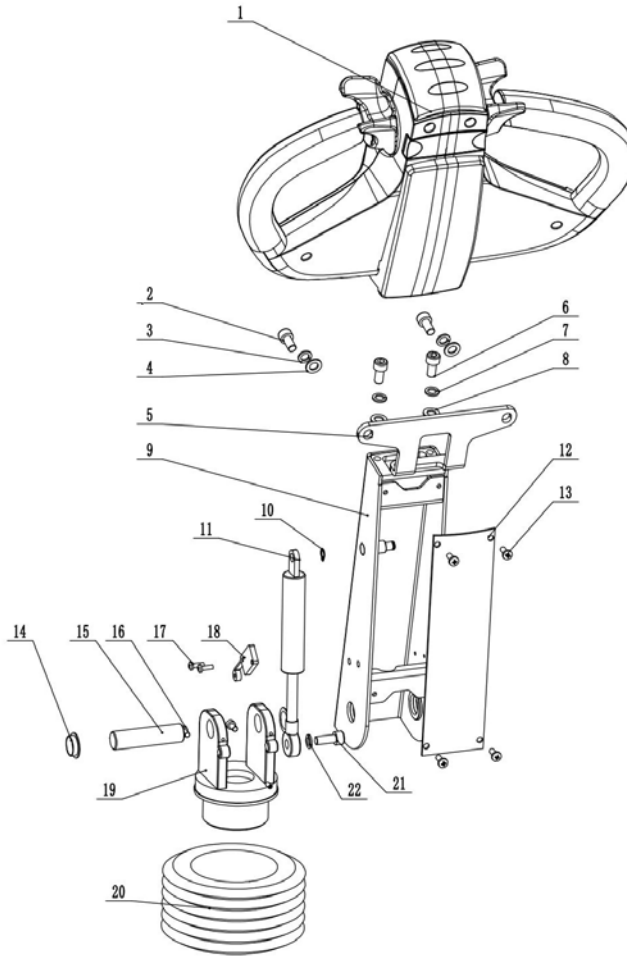
9.8 Drive wheel assembly



Item	Part No	Description	Qty	Remarks
1	HR-3-822	Motor components 48v	1	
2	HR-3-801	Flat key 6*6*15	1	
3	HR-3-802	Flat key 5*5*8	1	
4	HR-3-803	Main support base	1	
5	HR-3-804	Hexagon socket bolt M8x75	1	
6	HR-3-805	Deep groove ball bearing 6005LS	5	
7	HR-3-806	Secondary driving gear	1	
8	HR-3-807	First stage drive wheel	1	
9	HR-3-808	Deep groove ball bearing 6005LS	1	
10	HR-3-809	Circlip for hole Ø47	1	
11	HR-3-810	Framework oil seal Φ 47 Φ x 7 x4	1	
12	HR-3-811	Brake	1	
13	HR-3-812	Brake bolt M4x35	1	
14	HR-3-813	Drive wheel outer ring 190*70	1	
15	HR-3-814	Hexagon socket head cap screw M6*30	1	
16	HR-3-815	Iron ring	6	
17	HR-3-816	Deep groove ball bearing 6105	2	
18	HR-3-817	Framework oil seal Φ 125 x 110 x12	1	
19	HR-3-819	Deep groove ball bearing 6005LS	1	
20	HR-3-820	Framework oil seal Φ47Φx 25 x7	1	
21	HR-3-821	Circlip for shaft Ø14	1	

ELECTRIC PALLET TRUCK

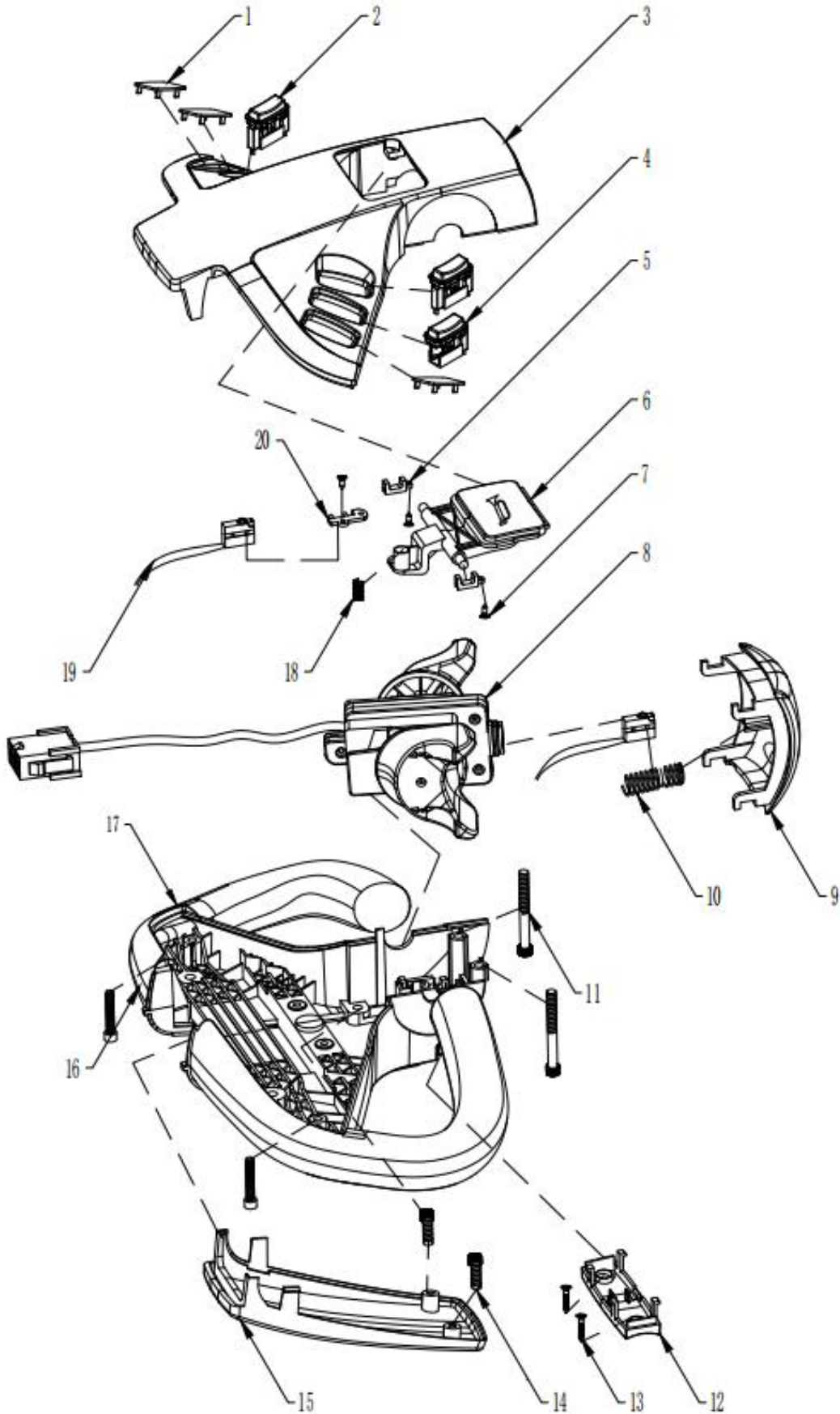
9.9 Handle Part



Item	Part No	Description	Qty	Remarks
1	HR40001	Handle Assembly	1	
2	40002	Hexagon socket bolt M8*16	2	
3	40003	Spring washer Ø8	2	
4	40004	Plain washer Ø8	2	
5	40005	Handle mounting plate	1	
6	40006	Hexagon socket bolt M8*20	2	
7	40007	Spring washer Ø8	2	
8	40008	Plain washer Ø8	2	
9	40009	Handle lever	1	
10	40010	Circlip for shaft Ø8	1	
11	40011	Pneumatic spring	1	
12	40012	Handle cover plate	1	
13	40013	Half round head screw M5*10	4	
14	40014	copper sleeve 18/16*10	2	
15	40015	Handle pin shaft 18*72	1	
16	40016	Limit screw	2	
17	40017	Cross pan head screw M5*30	2	
18	40018	Limit switch	1	
19	40019	Handle connection seat	1	
20	40020	leather sheath	1	
21	40021	Outer hexagonal bolt M8*16	1	
22	40022	Spring washer Ø8	1	

ELECTRIC PALLET TRUCK

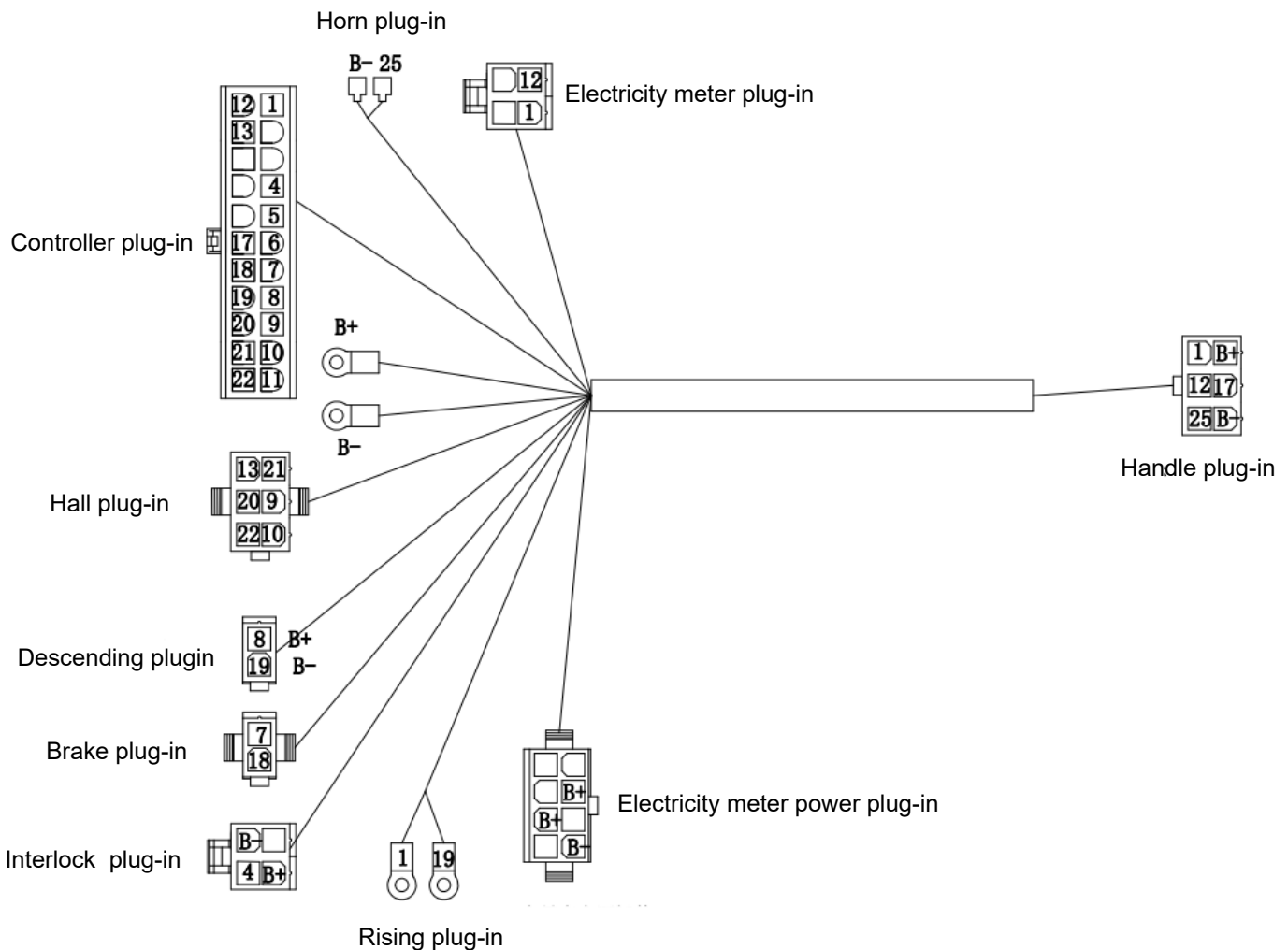
9.10 Handle Assembly



ELECTRIC PALLET TRUCK

Item	Part No	Description	Qty	Remarks
1	HR-4-101	Button plug	3	
2	HR-4-102	Lift switch assembly	2	
3	HR-4-103	Handle upper cover	1	
4	HR-4-104	Mode switch assembly	1	
5	HR-4-105	Horn button buckle	2	
6	HR-4-106	Horn button	1	
7	HR-4-107	Self-tapping screw M3*8	3	
8	HR-4-108	Accelerator Assembly	1	
9	HR-4-109	Button cover	1	
10	HR-4-110	Compression spring	1	
11	HR-4-111	Hexagon socket head cap screw M5*50	2	
12	HR-4-112	MODE button	1	
13	HR-4-113	Self-tapping screw M3*16	2	
14	HR-4-114	Cross screw M5*10	2	
15	HR-4-115	Lower cover decorative panel	1	
16	HR-4-116	Hexagon socket head cap screw M5*25	2	
17	HR-4-117	Lower cover of handle	1	
18	HR-4-118	Compression spring	1	
19	HR-4-119	Microswitch	7	
20	HR-4-120	Horn switch bracket	1	

9.11 Line Pencil



ELECTRIC PALLET TRUCK

9.12 Power Supply Wire

Item	Description	Specification	Qty
1	Positive wire-Battery	10mm ² L=850mm	1
2	Positive to negative wire-Battery	10mm ² L=650mm	1
3	Negative wire-Battery	10mm ² L=900mm	1
4	Negative wire-Pump	10mm ² L=650mm	1
5	Positive wire-Pump	10mm ² L=1050mm	1
6	Control wire units(S=0.75)	0.75mm ² L=1200mm	1
7	Control wire units(S=0.5)	0.5mm ² L=1300mm	1
8	Control wire units-Handle	0.5mm ² L=1500mm	1
9	Micro-switch wire	0.75mm ² L=1000mm	1
10	Driving motor wire	10mm ² L=1600mm	1
11	Brake wire	0.75mm ² L=1600mm	1
12	Power cable	10mm ² L=260mm	1
13	Wire units-Electric control	1mm ² L=50mm	1
14	Charge indicator wire	0.75mm ² L=500mm	2

