

EZ WIRE INSTALLATION INSTRUCTIONS



INSTALLATION RECOMMENDATIONS

Tools Recommended:

- Safety ladder (most jobs too tall to reach from floor)
- Carpenter Level
- Chalk line

Tools Required

- 1/2" Masonry bit (drill holes in floor for post)
- 1/2" wrench or socket (screws for door to the post)
- 3/4" wrench or socket (for anchor bolts)
- Small hammer (to insert drive pins)

Parts Recommended:

- Floor Anchors (part #H5814 in post kit. 1/2" x 4-1/4") Post Shims (Part #H5820 in post kit) INCLUDED
- Drill Bits (various)
- Tape measure
- Safety Items (hardhat, gloves, safety glasses & steel toe work shoes); remove jewelry

Prior to installation:

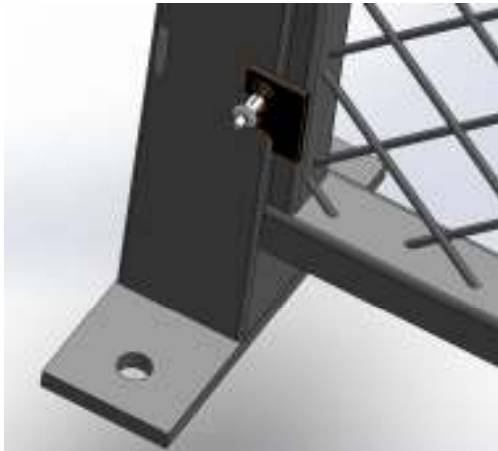
- Prior to beginning installation please check bill of lading to make sure that you have all the parts required for the assembly
 - Make sure that the installation area is clear of all obstructions
 - Read thoroughly all the instructions pertinent to your installation
 - The following installation instructions should be used as a guide for installing Husky Rack & Wire EZ WIRE products. Good common sense and appropriate safety precautions must be used during installations. The product may be unstable during installation; temporary bracing should be used until all hardware is tightened and the product is properly anchored to the floor. Permanent field bracing (NOT SUPPLIED) may be installed. Call Factory if installation help is needed. Installation problems arising from job site conditions should be referred to a professional installer. Refer product assembly questions to Husky Rack & Wire. 800-438-5629.
- **DO NOT CLIMB FENCE DURING OR AFTER INSTALLATION**

PANEL/POST ARRANGEMENTS



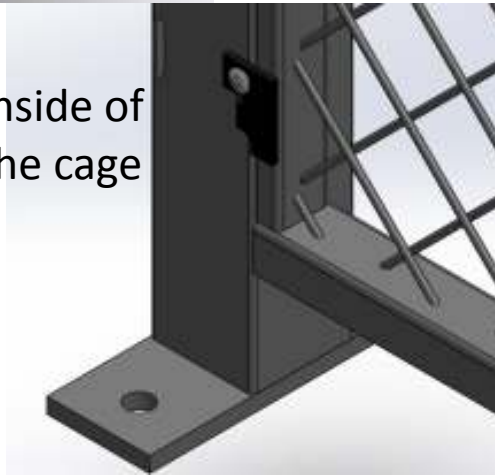
- Use a chalk-line to mark the partition runs on the floor.
 - Starting with a Line Post, lag the post to the floor using two floor anchors. (the line post is 2 ½" square tube with 2 ½" x 7 ½" footplate welded to it). Make sure the slots are facing inside of the cage.
 - Stand up another Line post at a distance of width of the panel to be installed. (Distance between in the post = Nominal width of the Panel – 2 3/8"). For 8' panel, distance between the post is 96"-2 3/8" = 93 5/8"
 - Pick up the panel and install the hooks in the slots of the line post. Install bottom panel first.
 - Install top panel and fasten to the post using drive pins.
- **EZ Wire panels are installed from the inside of the cage.**

PANEL/POST ARRANGEMENTS



DRIVE
PIN

Inside of
the cage



- Install one drive pin per hook for maximum security.
- Put drive pin into the hole
- Tap on the extended pin using hammer until it is flush with the cap part of the drive pin.

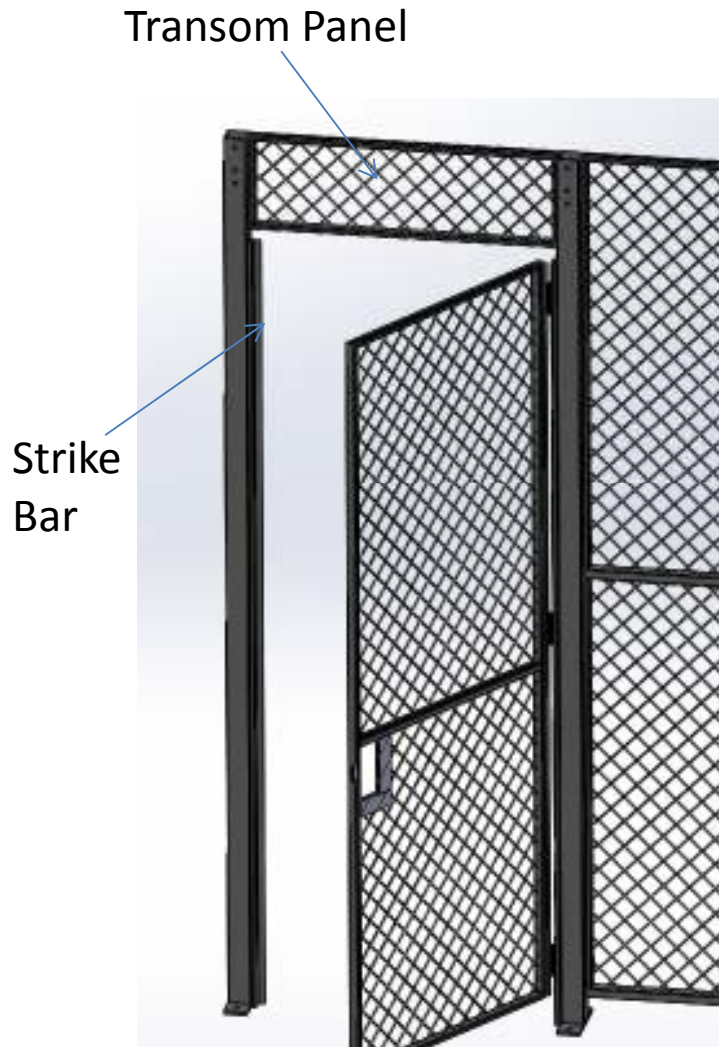
CORNER POST APPLICATION



- Corner post are used for turning corner at 90 degrees.
- Corner post can be installed as an Inside Corner or Outside Corner.

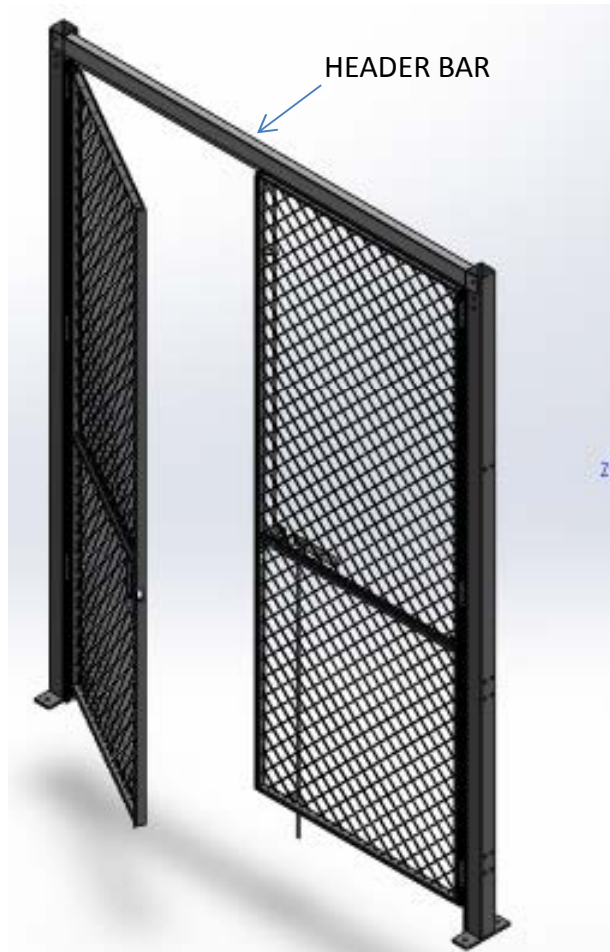


SINGLE SWING DOOR



- Swing doors can be installed Left/Right Hand, Swing In or Swing Out.
- The Picture shows Hinge right Swing Out (HRSO) door looking from outside of the cage.
- The opening between the posts for a swing door installation is equal to Nominal Width – $2 \frac{3}{8}$ ". (For example for 3' door the opening between the post is $36 - 2 \frac{3}{8}$ " = $33 \frac{5}{8}$ ")
- Install Transom panel first and anchor the line posts to the floor ensuring the opening width at the floor equals the transom width.
- Using $\frac{5}{16}$ " x 3" Carriage Bolts (3), attach door and strike bar to the posts.
- Install Cylinder Lock (see page...).

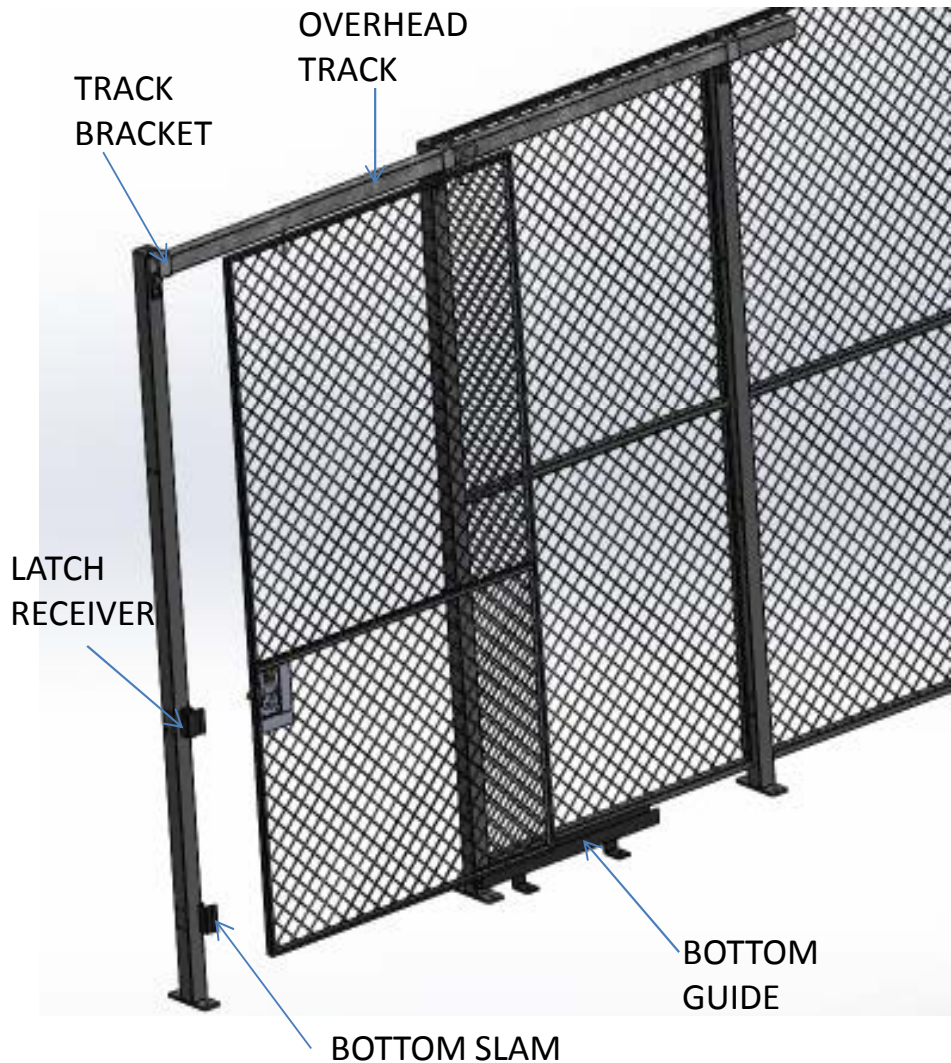
DOUBLE SWING DOOR



- First install header bar on top using 5/16" x 3" long carriage bolts.
- Install door panels to the post using 5/16" x 3" long carriage bolts. Make sure the cane bolt is inside of the cage

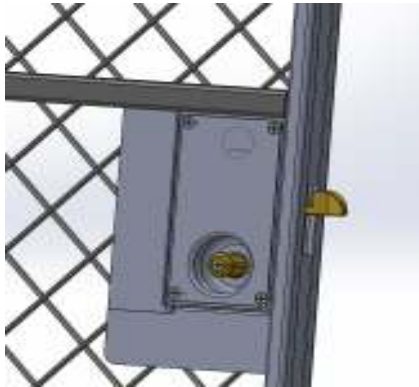
OPERATION: Close the door panel with the cane bolt first against the header bar and then turn the cane bolt handle. The rod will go behind the header bar and will secure the door in place. Close the door panel with lock plate against the other door panel.

SINGLE SLIDE DOOR

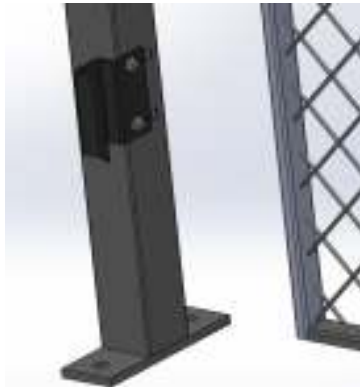


- Slide doors can be installed inside or outside .
- The inside distance between the posts is measuring width of the door – 2 ½". (If a panel is installed above the door, the opening between the posts will be the width of the panel)
- Install lock in the door first.
- Attach two 4-wheel trolley per door in the ½" diameter holes provided.
- Using 5/16" x 3" carriage bolts and nuts, install Latch Receiver and Bottom Slam.
- Install the Track Bracket to the post on either side of the door opening using 5/16" x 3 ½" carriage bolts and nuts. A third Track bracket can be installed on the post or to the panel using Panel Kit Plate.
- Install the Door Track in the Track Brackets. Secure the Track by tightening ¼" screw provided.
- Slide the door trolleys into the overhead Track.
- Install a track bumper as a keeper for the door Trolleys.
- Attach the Bottom Guide as shown.

SINGLE SLIDE DOOR



SLIDE LOCK



BOTTOM SLAM



BOTTOM GUIDE



LATCH RECEIVER

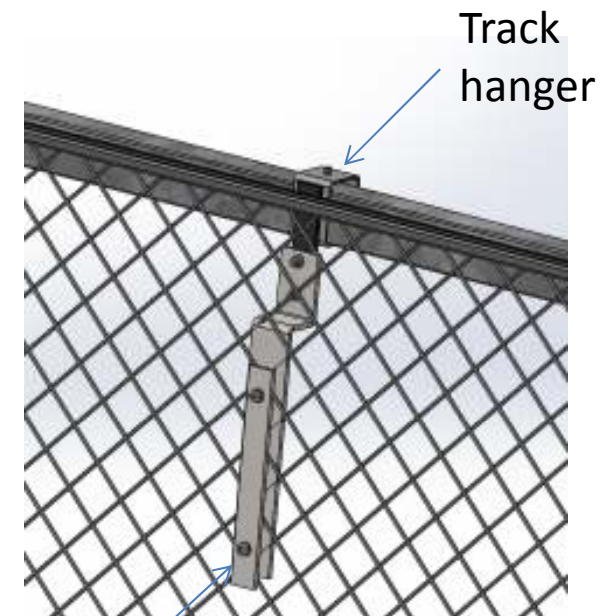


TRACK BRACKET



4-WHEEL TROLLEY

SINGLE SLIDE DOOR

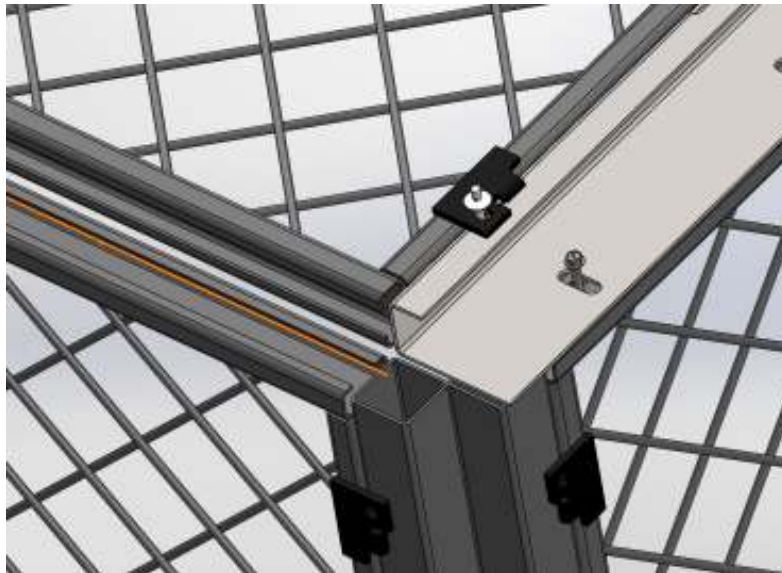


Panel Kit
Plate with
Hardware

- If the track is not long enough to reach the next post, Panel Kit Plate with Hardware is supplied to attach track hanger to the panel.

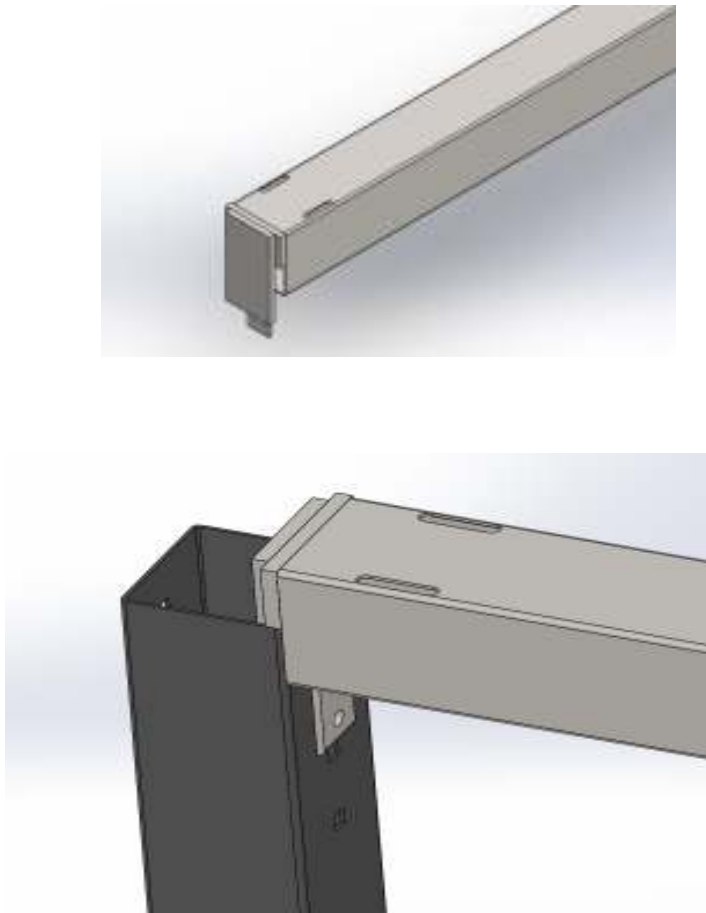
DOUBLE SLIDE DOOR

INSTALLATION OF CEILING END SUPPORT



- Ceiling End Supports are installed on top of the wall panels.
- To install, lay them on the top of the wall panels of an installed cage, and secure using $\frac{1}{4}$ " self drilling screws. Holes of the Ceiling End Support should line up with the holes on the top of the wall panels. If not, drill holes on top of the wall panels.

INSTALLATION OF CEILING SUPPORT TUBE



- Ceiling support tube is made out of 2 ½” square tubes with brackets welded at both ends.
- To install the Ceiling Support Tube, drop it over the two line post of the installed cage and secure with self drilling screws.
- Install panels and secure them using drive pins

TERMS AND CONDITIONS

Husky Rack and Wire
6146 Denver Industrial Park Rd, Denver NC 28037
Phone: 704-483-1900/ Fax: 704-483-1911
productinfo@huskyrackandwire.com



- It is the intent of Husky Rack and Wire that any product received by our Customers fully meets their expectations.
- Husky Rack and Wire product is Marketed and Distributed by a number of pre-qualified Distributor organizations around the world. If you have any questions about the applications or installation of your product or, in the event that this product is received by you in a form you believe to be sub-standard or below expectations, please contact the Distributor responsible for specifying and supplying your product.
- If for some unforeseen circumstance the particular Distributor is unavailable or unresponsive, we then encourage you to call Husky Rack and Wire Technical Support at 1-800-438-5629 or contact us at productinfo@huskyrackandwire.com
- All parts subject to change without notice – see www.huskyrackandwire.com for the latest technical data or installations.

