



2/7/2017

****U.S. and Canada customers ONLY****

IF ASSISTANCE IS NEEDED,

DO NOT CONTACT THE STORE!!!

CALL OUR CUSTOMER SERVICE DEPARTMENT at **1 (800) 225-3865**

HOURS: 7:00 a.m. to 5:00 p.m. Monday through Friday (Mountain Standard Time)

Call, or visit our Website for Saturday hours.

****For customers outside the U.S. or Canada, please contact the store for assistance.****

BACKBOARD AND RIM COMBO

MODEL #3823

ASSEMBLY INSTRUCTIONS
AND OWNER'S MANUAL



WARNING



To ensure your safety, do not attempt to assemble this system without reading and following **all** instructions carefully. Identify and inventory the parts using the Parts List. Failure to comply with any of the warnings in these instructions may result in serious personal injuries such as cuts, broken bones, nerve damage, paralysis, brain injury, or death. Failure to comply may also result in property damage. Please heed all warnings and cautions.

For Customer Service in mainland Europe:

E-mail: cs@lifetimeproducts.eu

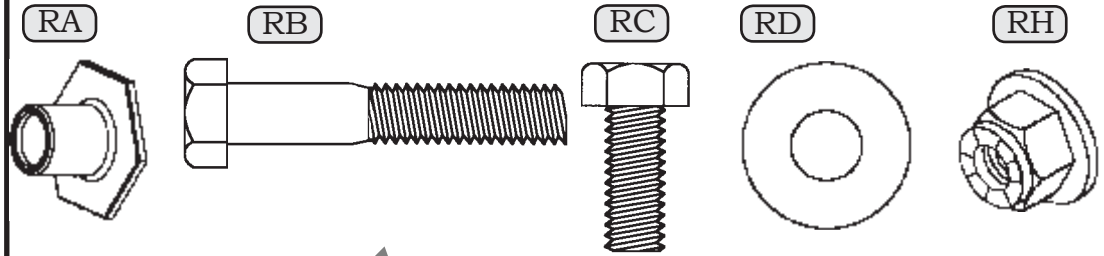
****A MINIMUM OF TWO
ADULTS ARE REQUIRED
FOR ASSEMBLY****



Save this instruction in the event that the manufacturer has to be contacted for replacement parts.

PARTS LIST

ID	Part #	Description	Qty.	✓
AA	1026344	Backboard	1	<input type="checkbox"/>
AB	1018886	Rim	1	<input type="checkbox"/>
AC	502005	Net	1	<input type="checkbox"/>
AD	AM01500	Rim Support Channel	1	<input type="checkbox"/>
Rim Hardware (1000480)				
RA	300066	5/16" Hex T-Nut	2	<input type="checkbox"/>
RB	300027	5/16" x 1 3/4" Hex Bolt	2	<input type="checkbox"/>
RC	302010	5/16" x 3/4" Hex Bolt	2	<input type="checkbox"/>
RD	302014	5/16" Flat Washer	4	<input type="checkbox"/>
RE	BB01400	2" U-Bolt	1	<input type="checkbox"/>
RH	302090	5/16" Nylock Flange Nut	4	<input type="checkbox"/>



HARDWARE IS ACTUAL SIZE

(Unless otherwise indicated)

POLE MOUNT

1. The Backboard can be mounted to Lifetime Products® brand pole models.
2. If using an existing pole system that **does not** have an extension arm provided, see Page 4.

Tools and Materials Required for Assembly (Not Included)

1. Adjustable Wrench
2. 1/2" Wrenches (2)
3. Needlenose Pliers

! Mounting Kit Not Included

SAFETY INSTRUCTIONS

FAILURE TO FOLLOW THESE WARNINGS MAY RESULT IN SERIOUS INJURY OR PROPERTY DAMAGE AND WILL VOID WARRANTY.

Owner must ensure that all players know and follow these rules for safe operation of the system.

To ensure safety, do not attempt to assemble this system without following the instructions carefully. Check entire box and inside all packing material for parts and/or additional instruction material. Before beginning assembly, read the instructions and identify parts using the hardware identifier and parts list in this document. Proper and complete assembly, use and supervision are essential for proper orientation and to reduce the risk of accident or injury. A high probability of serious injury exists if this system is not installed, maintained, and operated properly.

- If using a ladder during assembly, use extreme caution.
- Two capable adults are recommended for this operation.

Most injuries are caused by misuse and/or not following instructions. Use caution when using this system.

STOP!

BEFORE BEGINNING ASSEMBLY

STOP!

- A. Identify and inventory all parts using the checklist boxes on the Parts List. If any parts are missing, call our Customer Service Department.
- B. Test fit all Bolts by inserting them into their respective holes. If necessary, carefully scrape away any excess powder coating buildup from inside the holes. Do not scrape away all of the powder coating. Bare metal may rust.

We only endorse attaching this Backboard and Rim to Lifetime Products Backboard Brackets. Any other assembly is considered a custom installation and will not be covered in this instruction. Lifetime Products sells Kits that allow you to attach your new Backboard to a pole, roof, or wall and may be ordered through our Customer Service Department.

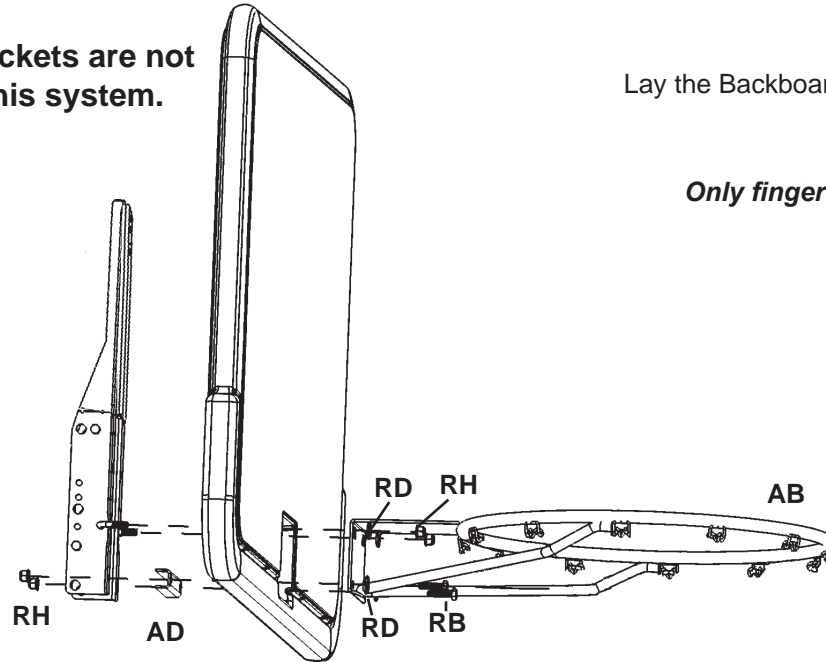
1

****Two Adults Required for This Step****

Backboard Brackets are not included in this system.

Lay the Backboard (AA) on a table or bench.

Only finger tighten the Nuts (RH) now.



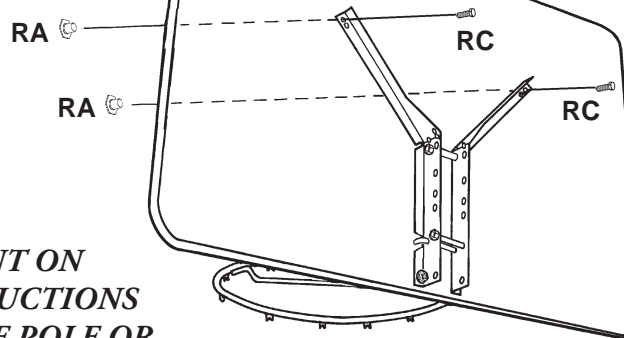
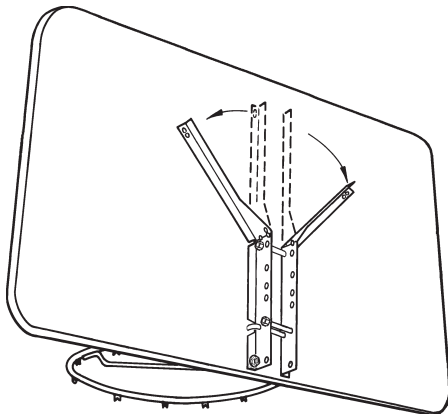
2

Bend the Backboard Brackets out.

You will need to use Needlenose Pliers to hold the T-Nuts (RA) in place while tightening.

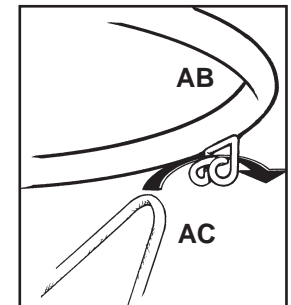
FROM THIS POINT ON FOLLOW THE INSTRUCTIONS PROVIDED WITH THE POLE OR MOUNTING UNIT.

Completely tighten all Rim hardware now.



3

Attach the Net (AC).



ROOF MOUNT, WALL MOUNT, EXISTING POLE MOUNT

If mounting the Backboard to a roof mount, wall mount or existing pole mount that does not have an extension provided, you must use a mounting bracket designed for this purpose. Lifetime Products, Inc.® offers a Universal Extension Bracket, Model #9594, through our Customer Service Department. Figures A, B and C show Model #9594 mounted to a roof mount, wall mount and existing pole mount. Please see below for ordering information.

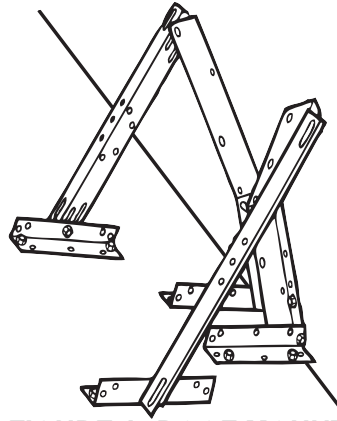


FIGURE A, ROOF MOUNT

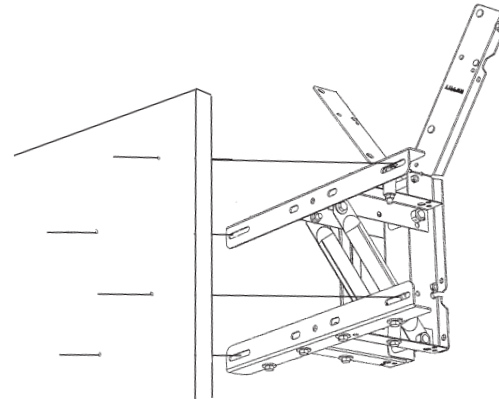


FIGURE B, WALL MOUNT

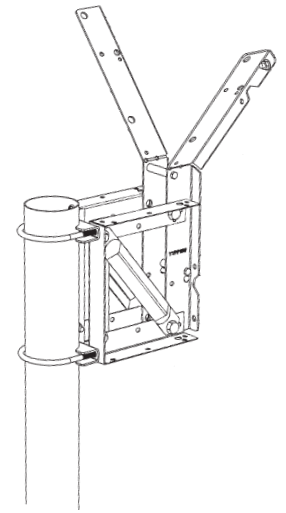


FIGURE C, EXISTING
POLE MOUNT

! Mounting Kit Not Included

ACCESSORIES AVAILABLE FOR MORE BASKETBALL FUN!

PRODUCT DESCRIPTION

Universal Extension Bracket
Adjustable Universal Extension Bracket
Intermediate Size Basketball

MODEL

9594
1044
594201

CONTACT CUSTOMER SERVICE FOR PRICES AND SHIPPING COSTS.

TO PLACE ORDERS, USE A MASTER CARD OR VISA
AND CALL OUR CUSTOMER SERVICE DEPARTMENT:

1 (800) 225-3865

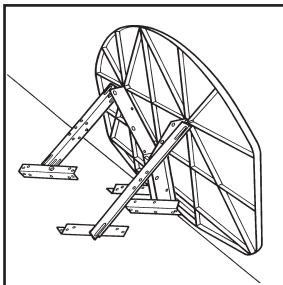
LIFETIME PRODUCTS, INC.

P.O. BOX 160010

BLDG. D-11, FREEPORT CENTER

CLEARFIELD, UT 84016-0010

Universal Extension Bracket
#9594



SYSTEM MAINTENANCE

The life of your basketball system depends on many variables. The climate, exposure to corrosives such as salt, pesticides, or herbicides, and excessive use or misuse can all contribute to pole failure, which may cause property damage or personal injury.

Check your basketball system frequently for loose hardware, excessive wear, and signs of corrosion. For safety reasons, and to prolong the life of your basketball system, you **must** take the following preventive measures.

- a. Check all Nuts and Bolts. If any are loose, tighten them.
- b. Check all parts for excessive wear and tear. If necessary, replace any parts that have been worn or damaged through usage. Contact our Customer Service Department for replacement parts.

LIFETIME BASKETBALL EQUIPMENT 5-YEAR LIMITED FACTORY WARRANTY

THE MANUFACTURER RESERVES THE RIGHT TO MAKE SUBSTITUTIONS TO WARRANTY CLAIMS IF PARTS ARE UNAVAILABLE OR OBSOLETE.

1. Lifetime basketball systems are warranted to the original purchaser to be free from defects in material or workmanship for a period of five years from the date of original retail purchase. The word “defects” is defined as imperfections that impair the use of the product. Defects resulting from misuse, abuse or negligence will void this warranty. This warranty does not cover defects due to improper installation, alteration or accident. This warranty does not cover damage caused by vandalism, rusting, “acts of nature” or any other event beyond the control of the manufacturer.
2. This warranty is nontransferable and is expressly limited to the repair or replacement of defective basketball equipment. If the equipment is defective within the terms of this warranty, Lifetime Products, Inc. will repair or replace defective parts at no cost to the purchaser. Shipping charges to and from the factory are not covered and are the responsibility of the purchaser. Labor charges and related expenses for removal, installation or replacement of the basketball system or its components are not covered under this warranty.
3. This warranty does not cover scratching or scuffing of the product that may result from normal usage. In addition, defects resulting from intentional damage, negligence, unreasonable use or hanging from the net or rim will void this warranty.
4. Liability for incidental or consequential damages is excluded to the extent permitted by law. While every attempt is made to embody the highest degree of safety in all equipment, freedom from injury cannot be guaranteed. The user assumes all risk of injury resulting from the use of this product. All merchandise is sold on this condition, and no representative of the company may waive or change this policy.
5. This product is not intended for institutional or commercial use; Lifetime Products, Inc. does not assume any liability for such use. Institutional or commercial use will void the warranty.
6. This warranty is expressly in lieu of all other warranties, expressed or implied, including warranties of merchantability or fitness for use. Neither Lifetime Products, Inc., nor any representative assumes any other liability in connection with this product.



**ALL WARRANTY CLAIMS MUST BE ACCOMPANIED BY A SALES RECEIPT.
REPORT PRODUCT DEFECTS IN WRITING TO:**

Lifetime Products, Inc., PO Box 160010 Clearfield, UT 84016-0010
or call (800) 225-3865 M-F 7 a.m. to 5 p.m. MST.

Please include your dated sales receipt and photographs of damaged parts.

To Register Your Product, Visit Our Website at www.lifetime.com