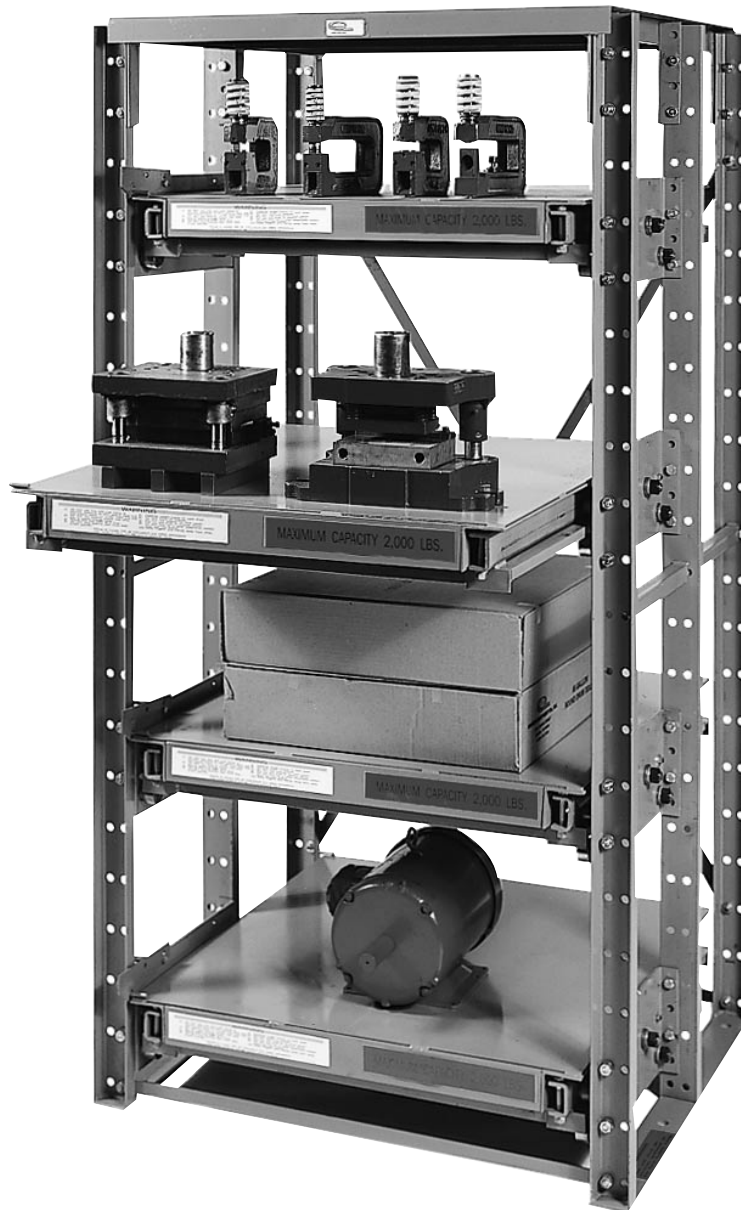


Instructions For Assembling ROLL-OUT SHELF RACKS



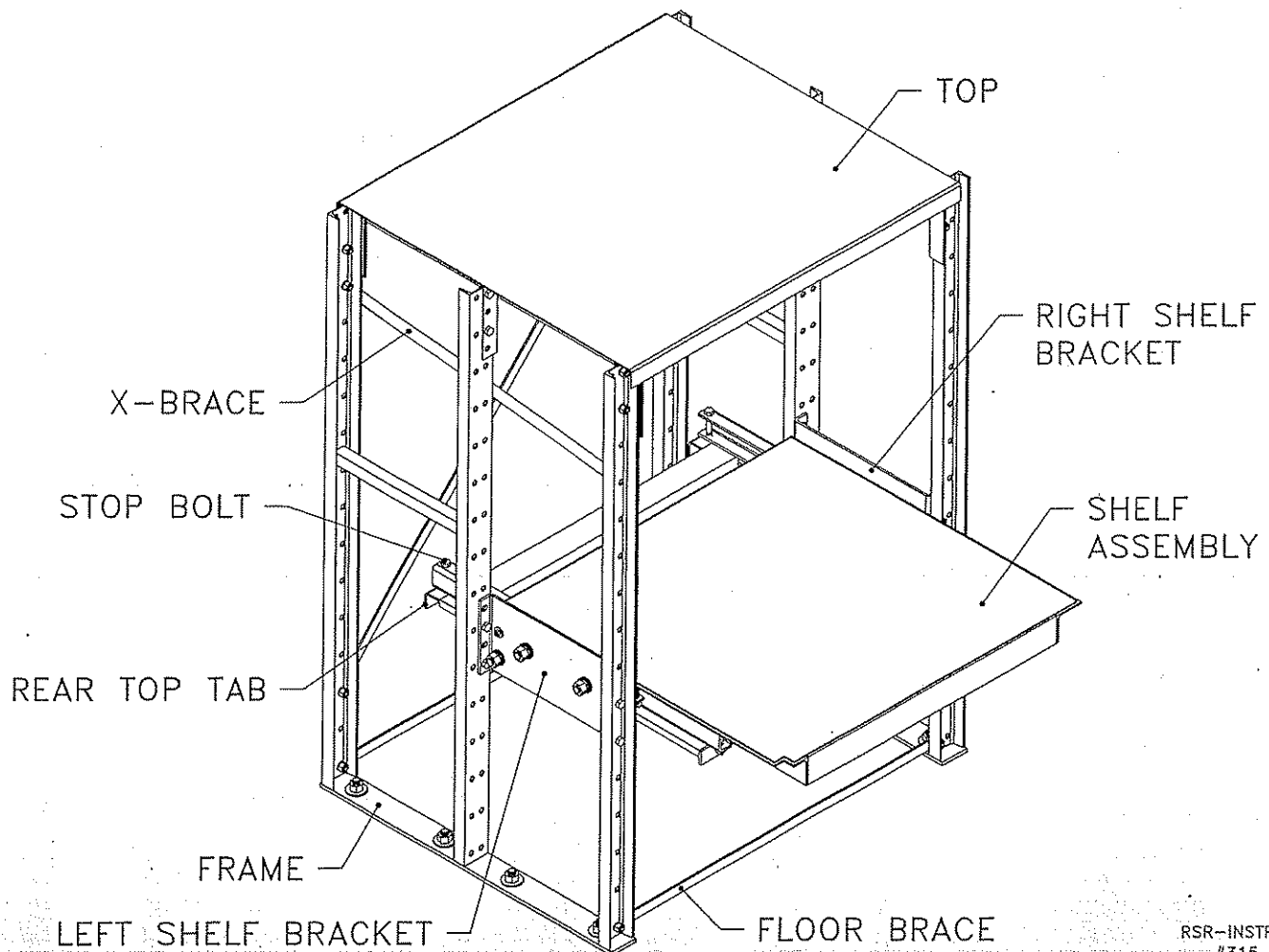
ROLL OUT STORAGE RACK

READ ALL INSTRUCTIONS & SAFETY PRECAUTIONS FIRST. FOLLOW INSTRUCTIONS CAREFULLY, IN SEQUENCE. USE LOCK WASHERS ON ALL BOLTS; LEAVE BOLTS FINGER-TIGHT UNTIL STEP 5 OF ASSEMBLY

FAILURE TO COMPLY WITH ALL INSTRUCTIONS & SAFETY PRECAUTIONS MAY RESULT IN PROPERTY DAMAGE AND/OR PERSONAL INJURY.

SAFETY PRECAUTIONS

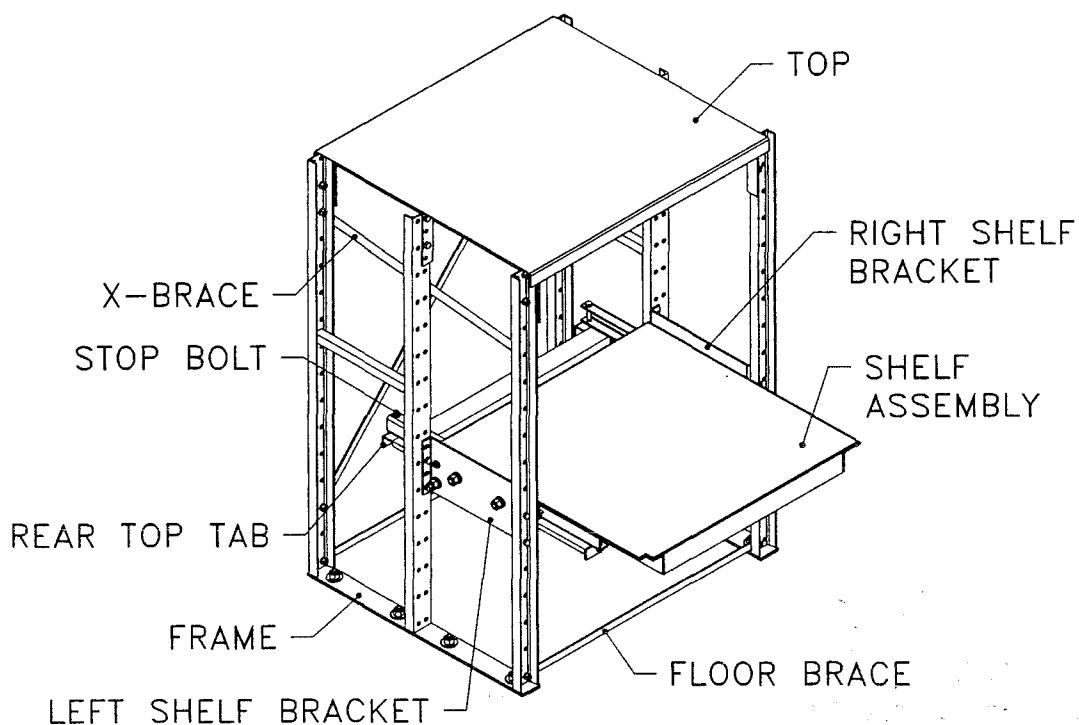
1. **DO NOT** USE THIS UNIT UNTIL IT IS SECURELY ANCHORED TO THE FLOOR AND LEVELED FRONT TO BACK.
2. **DO NOT** USE SHELVES UNLESS 4 STOP BOLTS THROUGH TRACKS AND 2 REAR STOP TABS ARE IN PLACE.
3. EXTEND ONLY ONE SHELF AT A TIME.
4. **DO NOT** LOAD SHELVES WITH MORE THAN 2000 LBS.
5. DISTRIBUTE WEIGHT EVENLY ON EACH SHELF.
6. **DO NOT** STAND ON SHELVES.
7. **DO NOT** USE SHELF AS A WORKBENCH.
8. IN USE, PULL TRACK ASSEMBLY OUT FIRST, THEN SHELF.
9. PULL OUT AND PUSH IN SHELVES SLOWLY.
10. KEEP FINGERS & HANDS OUT OF TRACKS.



ROLL OUT STORAGE RACK

QUANTITY OF PARTS PER ROLL OUT SHELF RACK

PART NUMBER	MODEL NUMBER	RSR335-3	RSR435-3	RSR445-3	RSR336-3	RSR436-3	RSR446-3	RSR337-4	RSR437-4	RSR447-4	RSR335-3A	RSR435-3A	RSR445-3A	RSR336-3A	RSR436-3A	RSR446-3A	RSR337-4A	RSR437-4A	RSR447-4A
FRAME																			
RSRF35-W 1		2	2								1	1							
RSRF45-W 1				2									1						
RSRF36-W 1					2	2								1	1				
RSRF46-W 1							2									1			
RSRF37-W 1								2	2								1	1	
RSRF47-W 1										2									1
TOP																			
RSRT33-W 1		1			1			1			1			1			1		
RSRT43-W 1			1			1			1			1			1			1	
RSRT44-W 1				1			1			1			1			1			1
X-BRACE																			
RSRX35-P 1		2									2								
RSRX45-P 1			2	2								2	2						
RSRX36-P 1					2									2					
RSRX46-P 1						2	2								2	2			
RSRX37-P 1								2									2		
RSRX47-P 1									2	2								2	2
SHELF ASSEMBLY																			
RSRS-33		3			3			4			3			3			4		
RSRS-43			3			3			4			3			3			4	
RSRS-44				3			3			4			3			3			4
LEFT SHELF BRACKET																			
RSRB33-LB-A 1		3	3		3	3		4	4		3	3		3	3		4	4	
RSRB44-LB-A 1				3			3			4			3			3			4
RIGHT SHELF BRACKET																			
RSRB33-RB-A 1		3	3		3	3		4	4		3	3		3	3		4	4	
RSRB44-RB-A 1				3			3			4			3			3			4
FLOOR BRACE																			
RSRFB33-P 1		2			2			2			2			2			2		
RSRFB44-P 1			2	2		2	2		2	2		2	2		2	2		2	2
HARDWARE KIT																			
HK-24		1	1	1	1	1	1				1	1	1	1	1	1		1	1
HK-25								1	1	1							1	1	1



ASSEMBLY INSTRUCTIONSSTEP 1

ATTACH TOP TO FRAMES USING (10) 1/2 X 1
BOLTS, NUTS & LOCK WASHERS.
FINGER TIGHTEN ONLY AT THIS TIME.

1/2 X 1
HEX BOLT

BRACKET

TOP

NOTE:

FOR 62" TALL MODELS
USE HOLES AS SHOWN.

FOR 72" AND 84"
TALL MODELS USE THE
SECOND AND FOURTH
HOLES FROM THE
TOP OF THE BRACKET

1/2 LOCK
WASHER

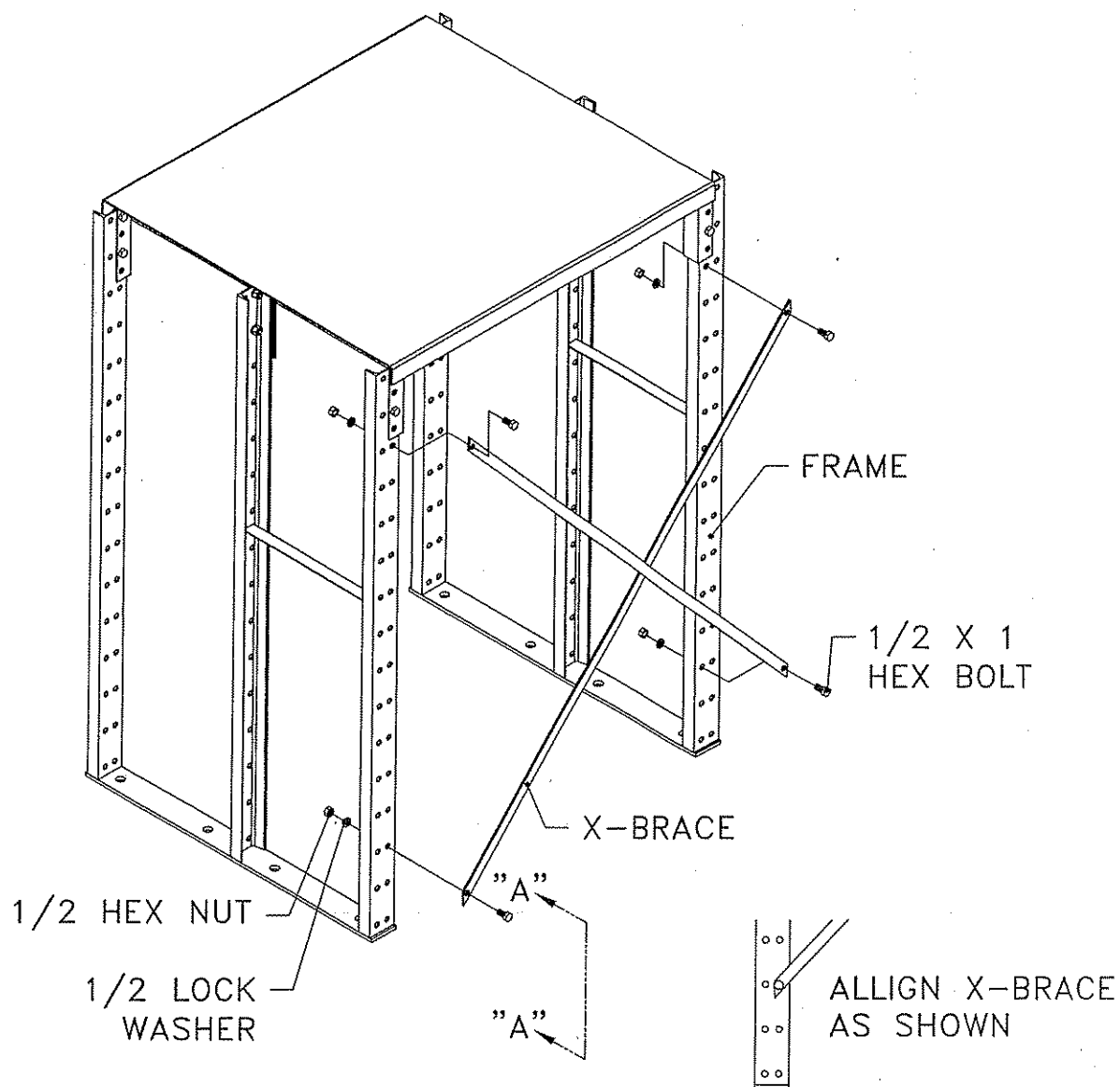
1/2 HEX NUT

FRAME

REMOVE AND DISCARD
RSR SHIPPING BRACE
AFTER ASSEMBLING
TOP TO FRAMES. RSR
SHIPPING BRACE MAY
NEED TO BE LOOSENED
BEFORE ASSEMBLING
TOP.

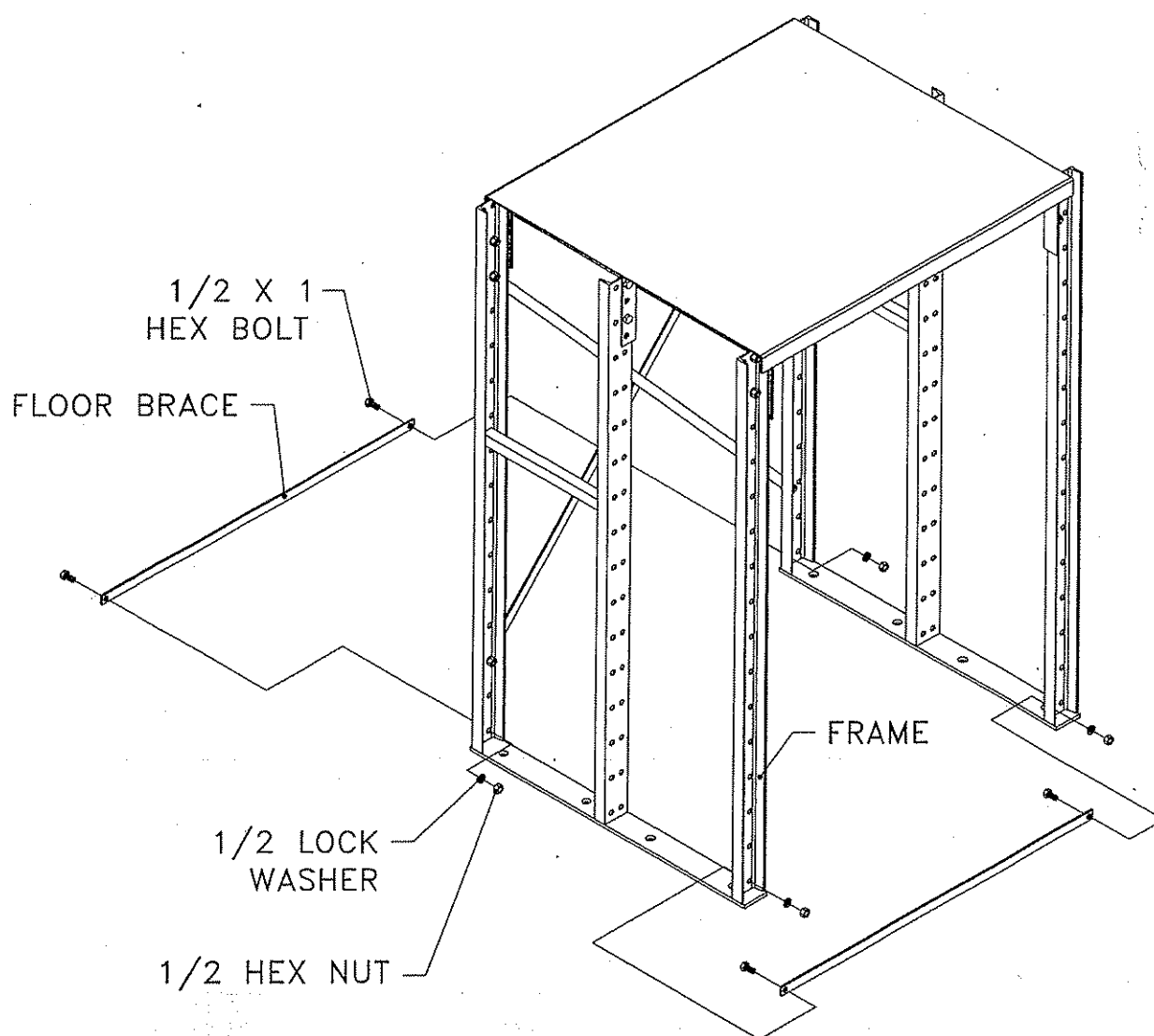
ASSEMBLY INSTRUCTIONSSTEP 2

ATTACH X-BRACES USING (4) 1/2 X 1
BOLTS, NUTS & LOCK WASHERS.
X-BRACES ATTACH TO THE THIRD HOLE
FROM THE BOTTOM AND THE THIRD HOLE
FROM THE TOP.
FINGER TIGHTEN ONLY AT THIS TIME.

VIEW FROM BACK OF RACK

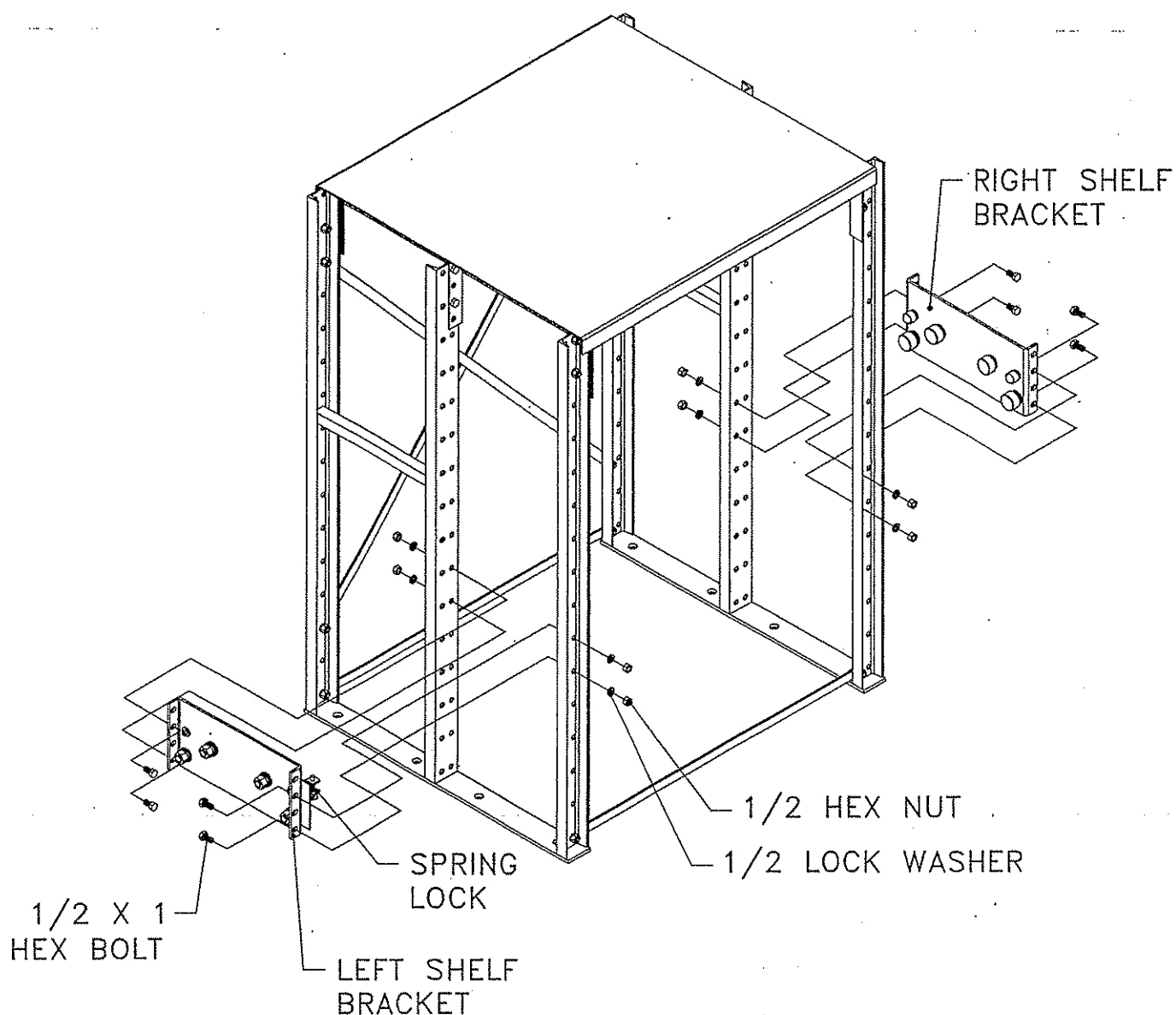
ASSEMBLY INSTRUCTIONSSTEP 3

ATTACH FLOOR BRACES USING (4) 1/2 X 1
BOLTS, NUTS & LOCK WASHERS.
FLOOR BRACES ATTACH TO THE BOTTOM HOLE
AT THE FRONT AND THE REAR OF THE FRAME.
FINGER TIGHTEN ONLY AT THIS TIME.



ASSEMBLY INSTRUCTIONSSTEP 4

ATTACH SHELF BRACKETS AT DESIRED SHELF HEIGHTS
USING (4) 1/2 X 1 BOLTS, NUTS & LOCK WASHERS
PER SHELF BRACKET. SHELF BRACKETS NEED TO BE ORIENTATED AS SHOWN.
NOTE: THE LEFT SHELF BRACKET HAS THE SPRING LOCK ATTACHED.
FINGER TIGHTEN ONLY AT THIS TIME.

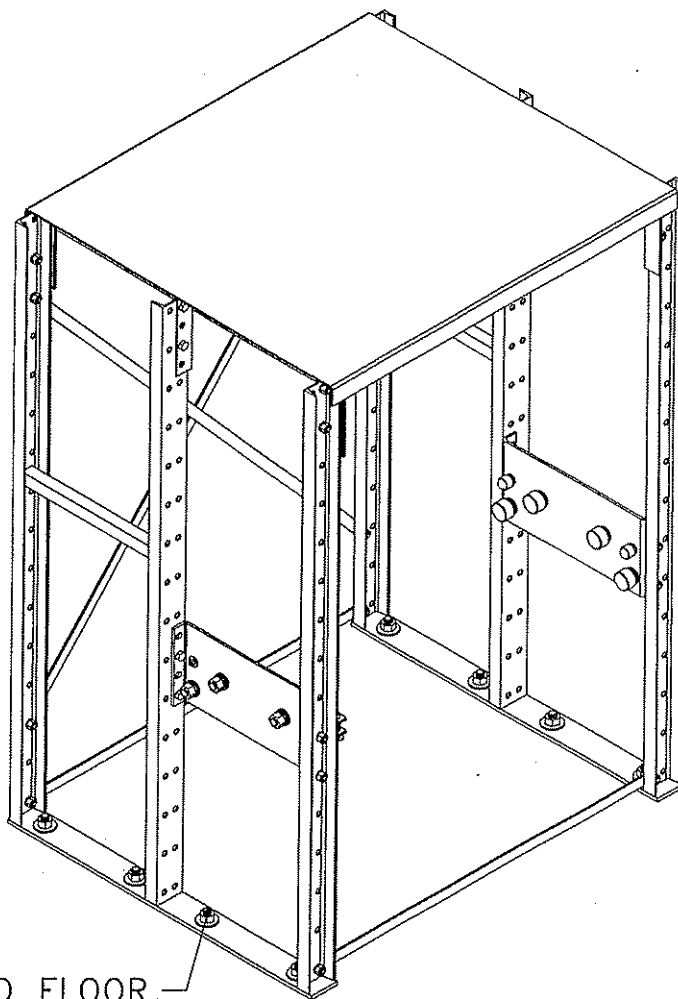


ASSEMBLY INSTRUCTIONSSTEP 5

MAKE SURE RACK ASSEMBLY IS LEVEL AND SQUARE.
THEN TORQUE ALL 1/2" BOLTS TO 110 FT-LBS MAXIMUM.
(SOME SHIMMING MAY BE REQUIRED)

STEP 6

ANCHOR UNIT TO FLOOR WITH (8) 3/4" ANCHORS
(NOT SUPPLIED). LENGTH OF ANCHOR IS DETERMINED
BY THICKNESS OF CONCRETE. 3 1/4" MINIMUM EMBEDMENT
DEPTH REQUIRED.



ANCHORS TO FLOOR

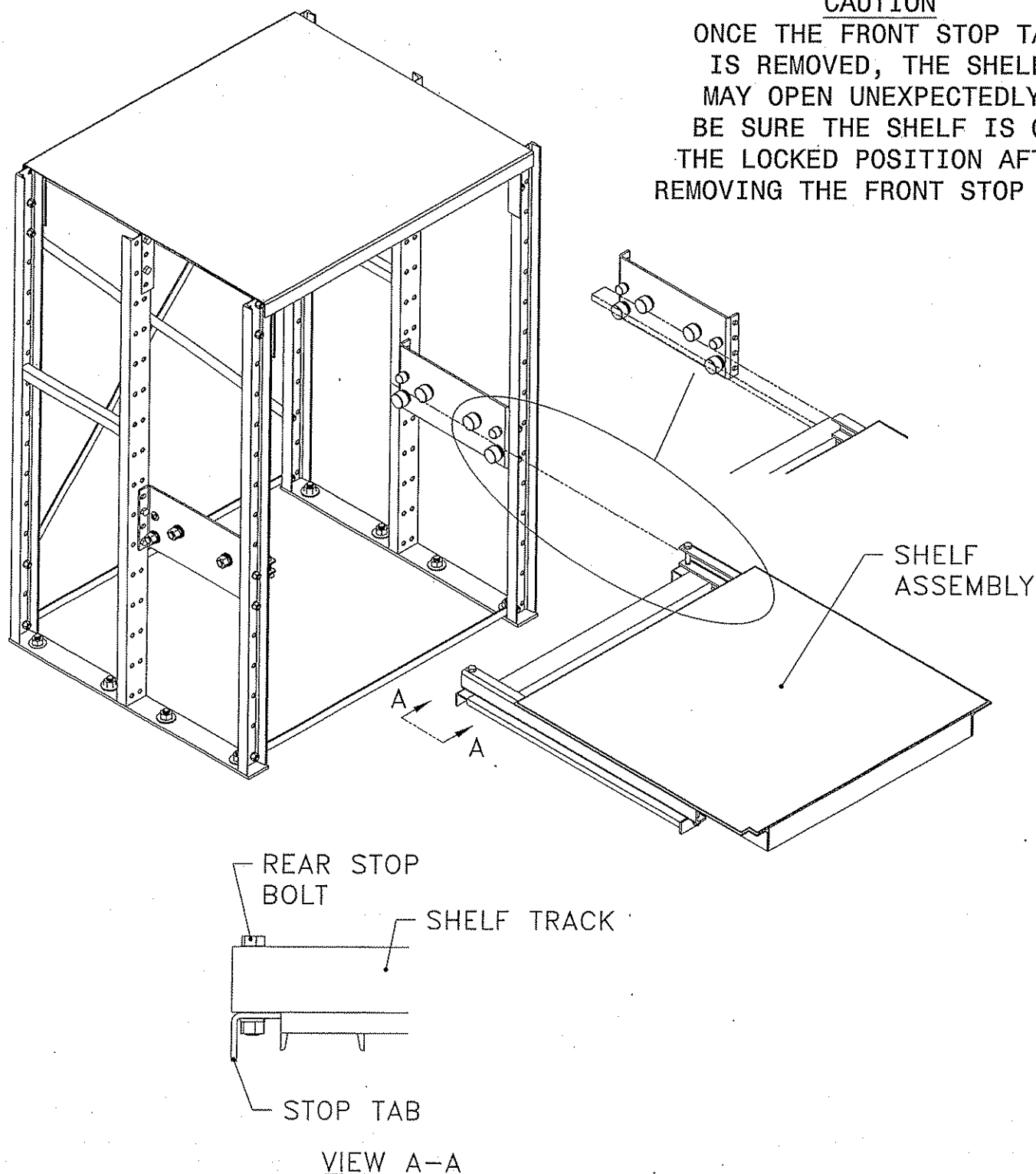
ASSEMBLY INSTRUCTIONS

STEP 7

FIRST, REMOVE THE REAR STOP TAB FROM THE SHELF ASSEMBLY (VIEW A-A).
 SLIDE THE SHELF ASSEMBLY ONTO THE ROLLERS AND REATTACH THE REAR STOP TAB.
 SECOND, REMOVE THE FRONT STOP TAB FROM THE SHELF ASSEMBLY
 AND REATTACH IT TO THE REAR OF THE SHELF ASSEMBLY.

CAUTION

ONCE THE FRONT STOP TAB IS REMOVED, THE SHELF
 MAY OPEN UNEXPECTEDLY.
 BE SURE THE SHELF IS ON
 THE LOCKED POSITION AFTER
 REMOVING THE FRONT STOP TAB.

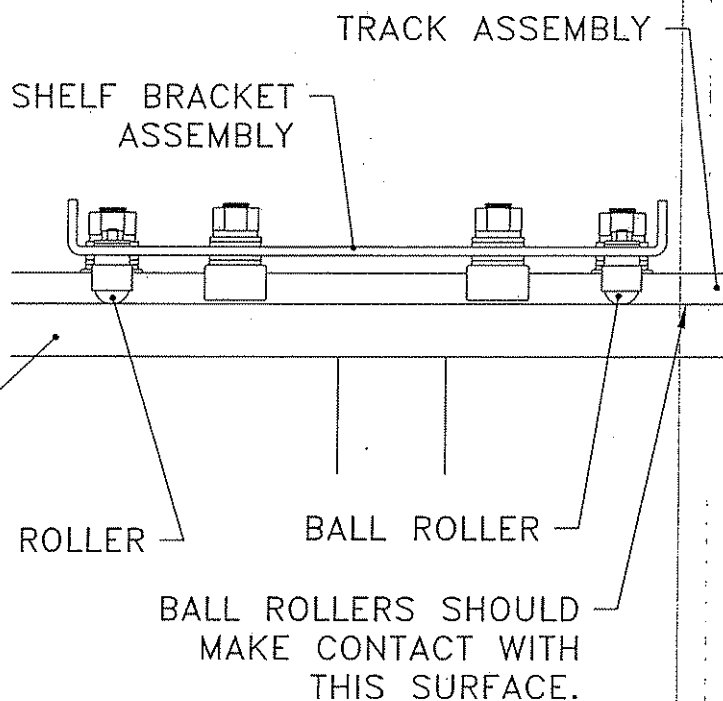


ASSEMBLY INSTRUCTIONSSTEP 8

EXTEND AND RETRACT EACH SHELF, ONE AT A TIME.
IF A SHELF IS TOO TIGHT, ADJUST THE SHELF BRACKETS OUTWARD
UNTIL THE SHELF ROLLS FREELY.

STEP 9

REPEAT STEPS 7 AND 8
FOR EACH SHELF.

DETAIL "A"