



Honeywell
MILLER

**Miller SkyORB™ Overhead
Rotational Boom Anchor**

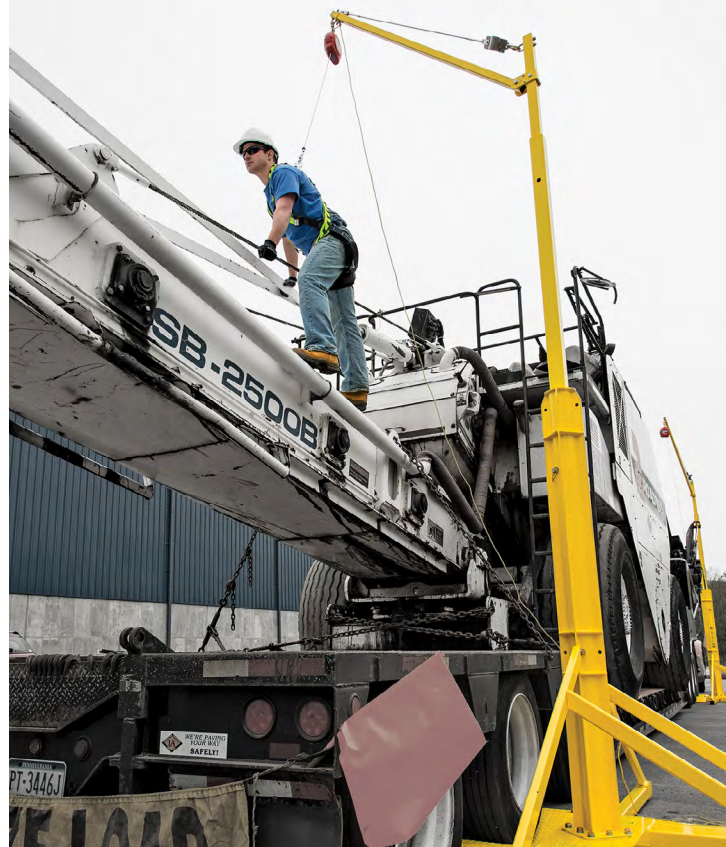
NEW Miller SkyORB™ Overhead Rotational Boom Anchor

Utilizes Vehicle Weight For Anchor

- Quick Assembly • Minimizes Free-Fall
- Versatile • Easy To Transport

Overhead anchorage connectors have always been a driving need for applications that do not have access to an overhead structure for securing a safe anchorage point. In many instances, such as truck loading / unloading / maintenance, a worker does not have the benefit of an overhead structure to secure an anchorage connector.

The **Miller SkyORB Overhead Rotational Boom Anchor** provides a safe overhead anchorage that is designed specifically for use around vehicles, **utilizing the vehicle weight to secure the anchor** for proper fall arrest, eliminating the need for heavy and bulky counterweights. The SkyORB Anchor is a pre-engineered system that replaces the need for very expensive, custom engineered, fixed overhead anchor systems.



The SkyORB Anchor offers many unique features:

- Provides the worker with an easy and quick connection with their fall arrest system while working at height.
- Designed to eliminate the need for heavy and bulky counterweights by utilizing vehicle weight to safely secure the system in place.
- Weighing only 1,050 lbs. (476 kg), it is significantly lighter than competitive systems on the market, making the SkyORB Anchor more versatile.
- The adjustable telescoping mast allows the height of the system to be varied from 14 ft. - 20 ft. (in 1 ft. increments) to accommodate lower roofs and overhead obstacles.
- With a boom that rotates 360°, it can be easily positioned above the worker's head, minimizing free-fall distance and swing fall.
- Patented energy absorbing technology reduces forces on the system.
- The modular design is easy to assemble and transport using only a forklift.

Overhead Rotational Boom Anchor

Self-Retracting Lifeline

Sold separately

Rotational Boom

360° Rotational Boom rotates in the direction of the worker minimizing swing fall



Small Footprint

Modular design allows for small footprint and easy transport using only a forklift

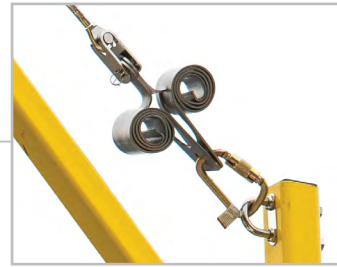


**BASE WIDTH
8 FEET**

**SYSTEM HEIGHT
FROM 14-20 FEET**

Shock Absorber

Patented energy absorbing design limits forces to the system



Adjustable Telescoping Mast

Telescoping Mast can be adjusted from 14 ft. -20 ft. conveniently positioning the anchorage above the workers head minimizing free-fall distance



**BASE HEIGHT
11 FEET**

Counterweight

No cumbersome counterweights by utilizing trucks weight to anchor



Guidelines

- The **SkyORB** Anchor requires a minimum of 10,000 lbs. (4,436 kg) of axle weight to be applied to the base plates.
- The **SkyORB** Anchor is designed for use with elevated platforms ranging from 6 ft. (1.8 m) to 14 ft. (4.3 m) above the ground. Fall clearance calculation should always be performed for your specific application prior to working at height.
- The maximum working radius allowed away from the mast is 14 ft. (4.3 m). The user must always be aware of swing fall and ensure that proper fall clearance is available, including lower level obstacles.
- The anchor is rated for one (1) user with total weight not exceeding 310 lbs. (140.6 kg) including all equipment and tools.

Miller SkyORB™ Overhead Rotational Boom Anchor

Model Number	Description	Weight*	Crate Dimensions* L x W x H
SORBSYS	Cable assembly kit, base, mast and boom	1,530 lbs (694 kg)	121" x 40" x 19" (3m x 1m x 0.5m)
SORBCABLEKIT	Shock absorber cable assembly replacement kit	8 lbs. (3.63 kg)	72" x 6" x 6" (1.83 m x 0.15 m x .015 m)

*Shipping weight displayed. Product weight is 1050 lbs. (476 kg). Dimensions displayed reflect measurements of the crate for shipping purposes.

Quick and Easy Set-up from Crate to Full Assembly!



1. Position crate for assembly



2. Remove base



3. Remove telescoping mast



4. Raise telescoping mast



5. Position telescoping mast on base



6. Complete anchor base assembly



7. Move SkyORB into position



8. System ready for use

Watch Video:



Limitless Possibilities. Ask the Expert.

Technical Service: 800.873.5242

www.millerfallprotection.com

Honeywell Industrial Safety

900 Douglas Pike
Smithfield, RI 02917

USA:

Phone: 800.430.5490

Fax: 800.322.1330

www.honeywellsafety.com

Canada:

Phone: 888.212.7233

Fax: 888.667.8477

LMSOB | 05/17
© 2017 Honeywell International Inc.

Honeywell