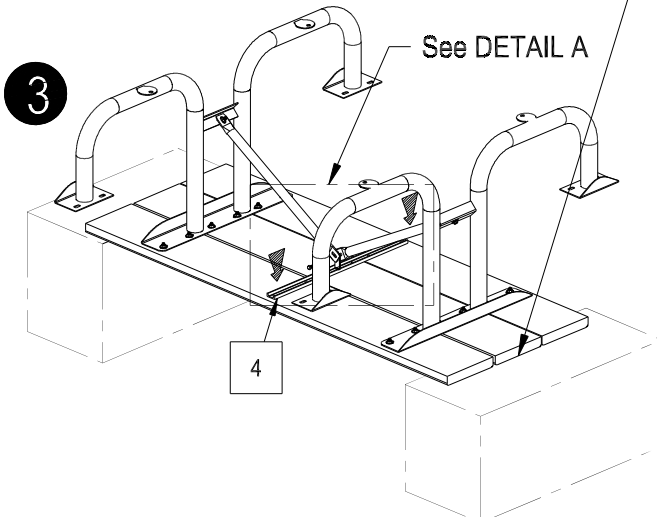
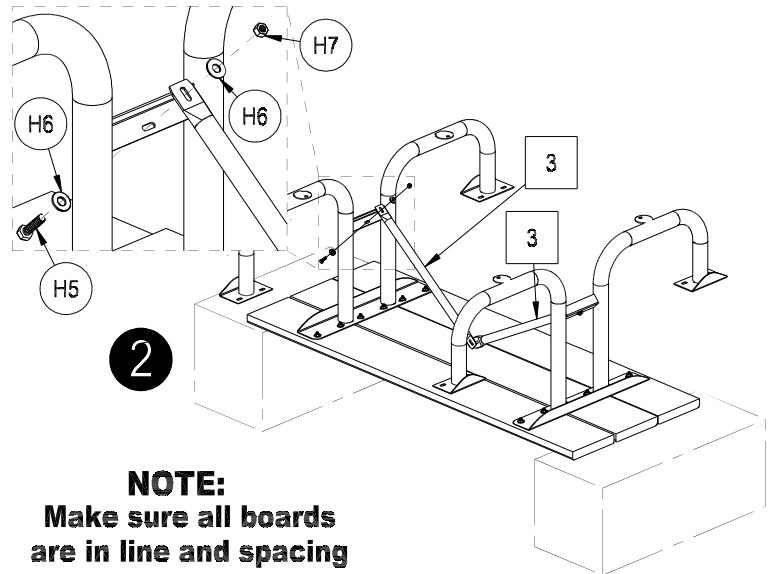
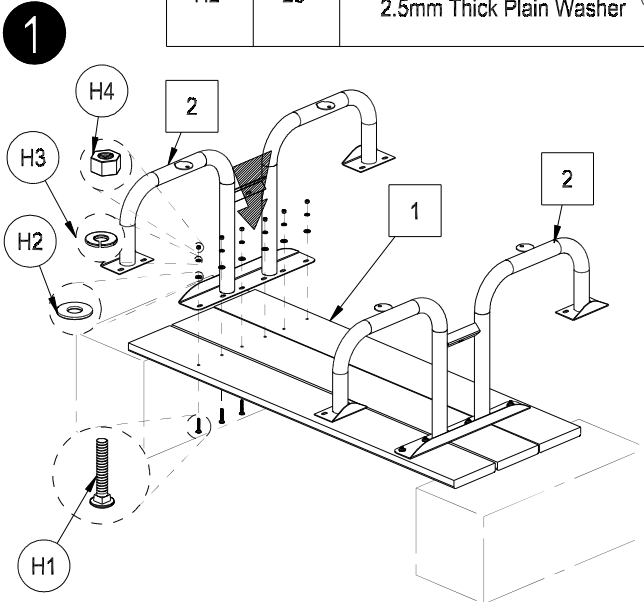


Note: finger tighten all nuts, washers and bolts until the table is completely assembled. This will allow for adjustment tolerances. Fully tighten after the table is completely assembled.

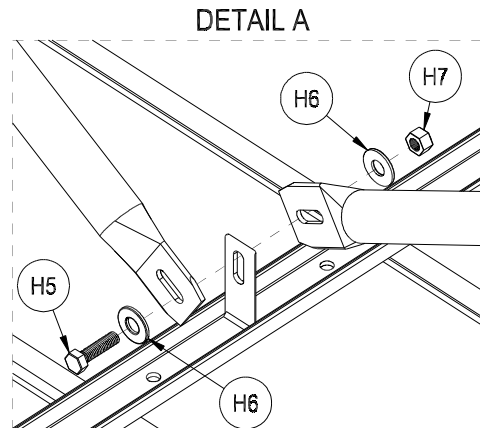
6'x8'WOOD PICNIC TABLE

Assembly Instructions
Model#695502 460946

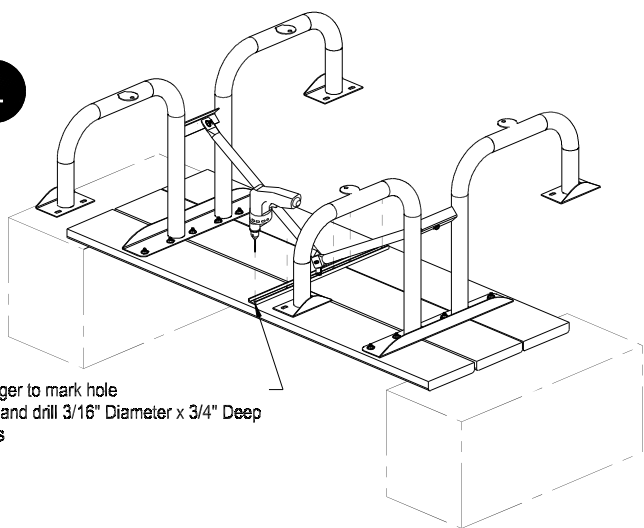
CONTENTS			CONTENTS		
REF	QTY	DESCRIPTION	REF	QTY	DESCRIPTION
1	5	6'x8'WOOD SLAT	H3	20	10.5mm ID Split Washer
2	2	LEG ASSEMBLY	H4	20	M10 x 1.5 Hex Nut
3	2	SUPPORT BAR	H5	3	M8 x 1.25 x 30mm Lg. Hex Head Bolt
4	1	STRINGER	H6	6	8.4mm ID x 24mm OD x 2mm Thick Plain Washer
H1	20	M10 x 1.5 x 60mm Lg. Carriage Bolt	H7	3	M8 x 1.25 Nylon Lock Nut
H2	20	10.5mm ID x 30mm OD x 2.5mm Thick Plain Washer	H8	6	M8 x 25mm Lg. Hex Head Screw



NOTE:
Make sure all boards are in line and spacing is correct before next step

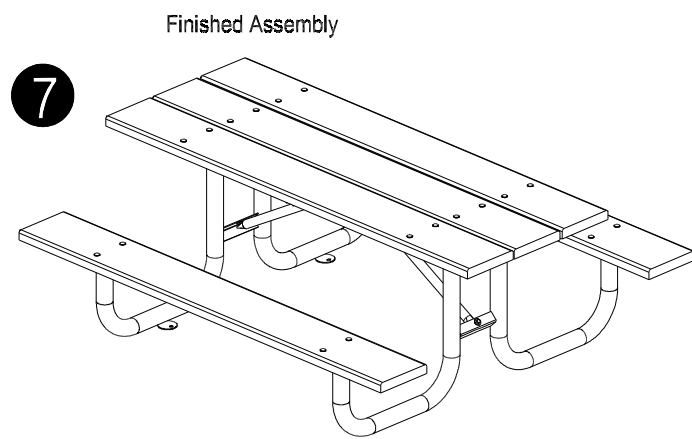
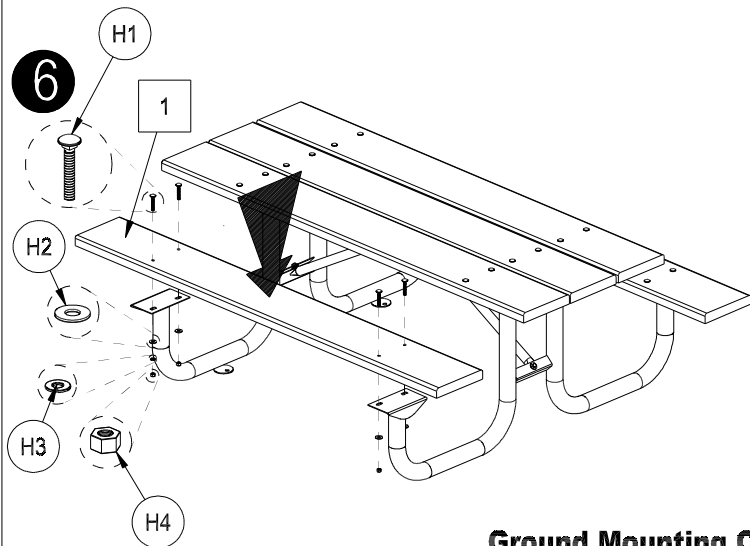
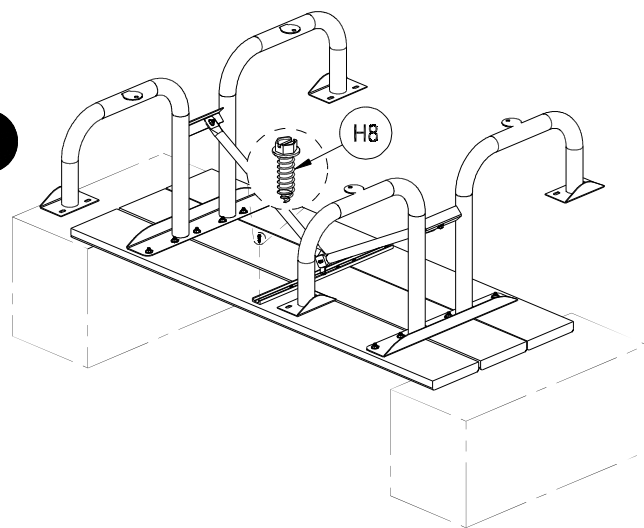


4



Use Stringer to mark hole locations and drill 3/16" Diameter x 3/4" Deep pilot holes

5

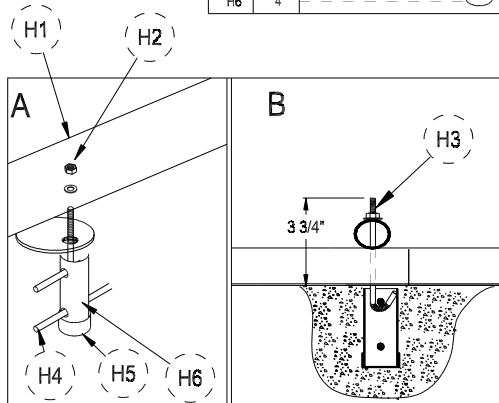


Finished Assembly

Ground Mounting Options (optional)
(Sold Separately)

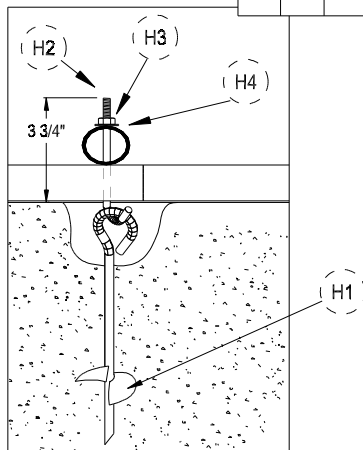
CEMENT/ ASPHALT ANCHOR KIT
Model # 652774

CONTENTS		
REF.	QTY.	DESCRIPTION
H1	4	
H2	4	
H3	4	
H4	8	
H5	4	
H6	4	



EARTH ANCHOR KIT
Model # 652775

CONTENTS		
REF.	QTY.	DESCRIPTION
H1	4	
H2	4	
H3	4	
H4	4	



SPIKE ANCHOR KIT
Model # 652776

CONTENTS		
REF.	QTY.	DESCRIPTION
H1	4	

