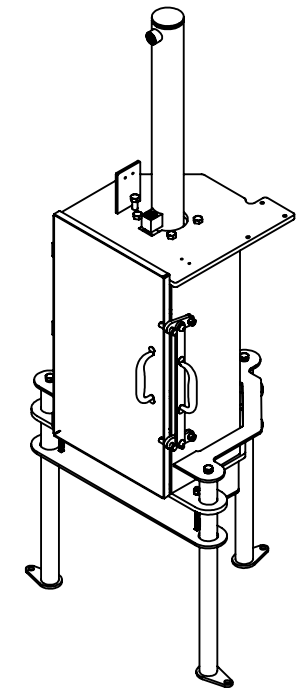
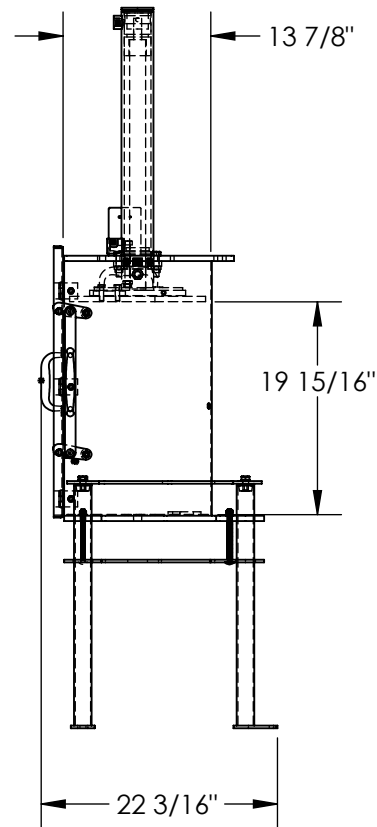
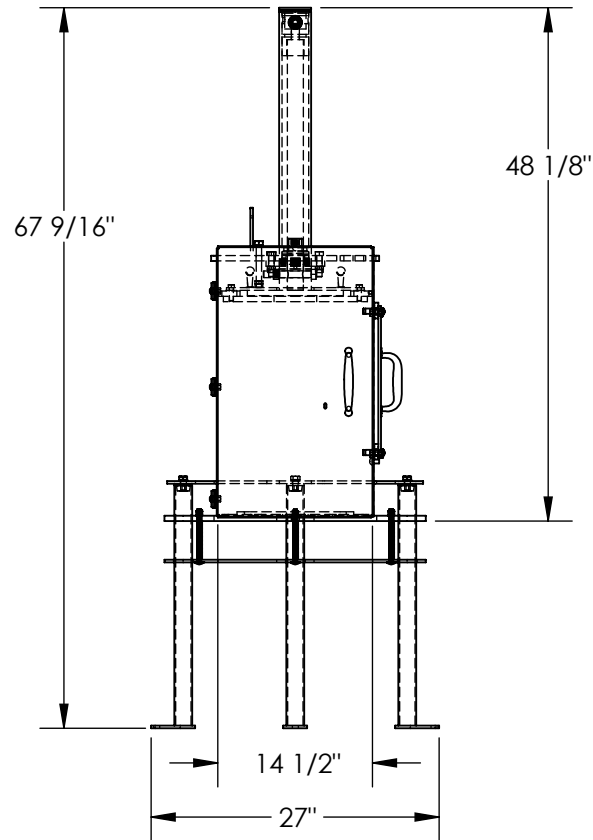


HYDRAULIC PAIL CRUSHER- HPC-405

APPROX WEIGHT: 221.94 lbs.
DOES NOT INCLUDE WEIGHT OF POWER OR PACKAGING!!!

*** ANY ADDITIONS, DELETIONS, OR OMISSIONS MUST BE CORRECTED ON THIS DRAWING AS THIS DRAWING WILL BE CONSIDERED ALL INCLUSIVE ***

ALL GRAPHICS PROVIDED ARE FOR REFERENCE ONLY. IF CERTAIN DIMENSIONS ARE CRITICAL PLEASE VERIFY THOSE DIMENSIONS WITH YOUR SALESPERSON



DIMENSION TOLERANCE $\pm 1/4$ "

STANDARD FEATURES

- MODEL NUMBER IS HPC-405
- OVERALL WIDTH IS 27"
- USABLE INSIDE WIDTH IS 14 1/2"
- OVERALL LENGTH IS 22 3/16"
- USABLE INSIDE LENGTH IS 13 7/8"
- OVERALL HEIGHT IS 48 1/8"
- USABLE INSIDE HEIGHT IS 19 15/16"
- 10,000 LBS OF CRUSHING FORCE
- HYDRAULIC SYSTEM PRESSURE IS 3000 PSI
- 18" CYLINDER STROKE REDUCES STEEL PAILS TO APPROXIMATELY 2"
- REMOVABLE BASE FOR BENCH TOP MOUNTING
- POWER UNIT: 115 V AC SINGLE PHASE
- CONTROL: HAND

SPECIAL FEATURES

NONE

APPROVAL	I, THE UNDERSIGNED, AGREE THAT THE PRODUCT AS REPRESENTED SATISFIES DESIGN AND DIMENSION REQUIREMENTS. I ALSO ACKNOWLEDGE MY DUTY TO CONFIRM PRODUCT AND INSTALLATION COMPLIANCE WITH ALL APPLICABLE FEDERAL, STATE AND LOCAL REGULATIONS AND STANDARDS.	
	ANY MODIFIED UNITS ARE NON-RETURNABLE	
	[] As drawn [] As marked	
	Signed: _____ Date: _____	
Printed Name: _____		
LEAD TIME WILL START UPON RECEIPT OF SIGNED APPROVAL DRAWING		

FOR INTERNAL USE ONLY PROJECT SIGN OFF	
SALES	
ENG.	
FAB.	
POWER	

DISTRIBUTOR'S NAME:		P.O.#
VESTIL MANUFACTURING		X
DRAWN BY: RAL	DATE: 08/31/15	W.O.#
REFERENCE: X	SCALE: 1:18	X
QUOTED LEAD TIME: X	QUOTE #	FILE NAME:
	X	22-007-019