



Vestil Manufacturing Company

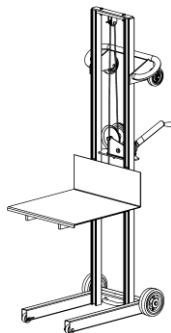
2999 North Wayne Street, P.O. Box 507, Angola, IN 46703

Telephone: (260) 665-7586 -or- Toll Free (800) 348-0868

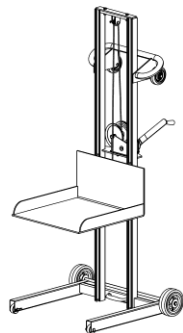
Fax: (260) 665-1339

Web: www.vestil.com e-mail: info@vestil.com

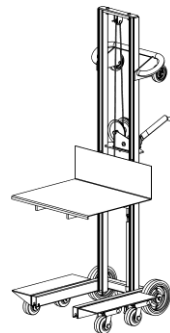
LLW, LLPW, ALLW, & ALLPW LIGHT LOAD LIFTERS



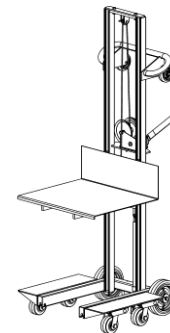
(A)LLW-FW



(A)LLPW-FW



(A)LLW-4SFL



(A)LLPW-4SFL

Receiving Instructions

After delivery, remove the packaging from the product. Inspect the product closely to determine whether it sustained damage during transport. If damage is discovered, record a complete description of it on the bill of lading. If the product is undamaged, discard the packaging.

NOTE: The end-user is solely responsible for confirming that product design, use, and maintenance comply with laws, regulations, codes, and mandatory standards applied where the product is used.

Technical Service & Replacement Parts

For answers to questions not addressed in these instructions and to order replacement parts, labels, and accessories, call our Technical Service and Parts Department at (260) 665-7586. The Department can also be contacted online at <https://www.vestil.com/page-parts-request.php>.

Electronic Copies of Instruction Manuals

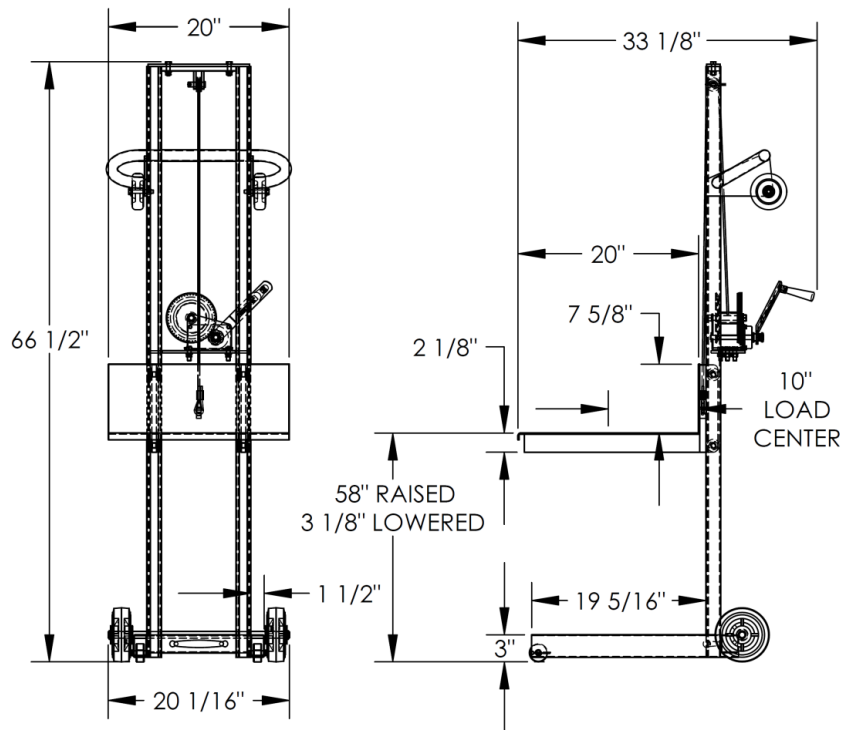
Additional copies of this instruction manual may be downloaded from <https://www.vestil.com/page-manuals.php>.

| Table of Contents | | Page |
|--|--|---------|
| Specifications (dimensions, capacity, net weight): LLW & ALLW..... | | 2 |
| Specifications (dimensions, capacity, net weight): LLPW & ALLPW..... | | 3 |
| Signal Words..... | | 4 |
| Safety Instructions..... | | 4 |
| National Standards..... | | 4 |
| LLW-202058-FW Exploded View & Bill of Materials..... | | 5 |
| ALLW-2020-FW Exploded View & Bill of Materials..... | | 6 |
| ALLW-2020-FWFL Exploded View & Bill of Materials..... | | 7 |
| LLW-202058-FWFL Exploded View & Bill of Materials..... | | 8 |
| LLW-202058-FWWL Exploded View & Bill of Materials..... | | 9 |
| LLW-242060-4SFL Exploded View & Bill of Materials..... | | 10 |
| ALLW-2420-4SFL Exploded View & Bill of Materials..... | | 11 |
| LLPW-500-FW Exploded View & Bill of Materials..... | | 12 |
| LLPW-500-FWFL Exploded View & Bill of Materials..... | | 13 |
| ALLPW-500-FW Exploded View & Bill of Materials..... | | 14 |
| ALLPW-500-FWFL Exploded View & Bill of Materials..... | | 15 |
| LLPW-500-4SFL Exploded View & Bill of Materials..... | | 16 |
| ALLPW-500-4SFL Exploded View & Bill of Materials..... | | 17 |
| Raising and Lowering the Deck..... | | 18 |
| Using the Hand Truck..... | | 18 - 19 |
| Record of Satisfactory Condition..... | | 19 |
| Inspections & Maintenance..... | | 20 |
| Labeling Diagram..... | | 21 |
| Limited Warranty..... | | 22 |

SPECIFICATIONS

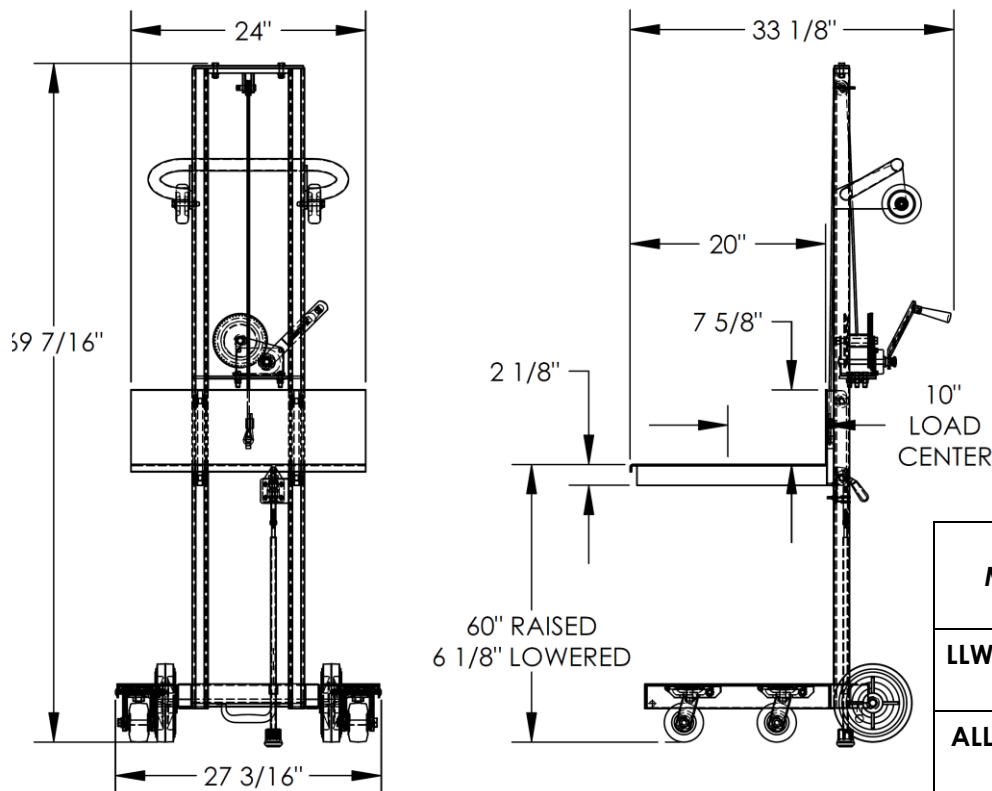
Dimensions, net weight, and capacity information for standard models appear in the diagrams & tables.

LLW-202058-FW; ALLW-2020-FW; LLW-202058-FWFL; ALLW-2020-FWFL; & LLW-202058-FWWL



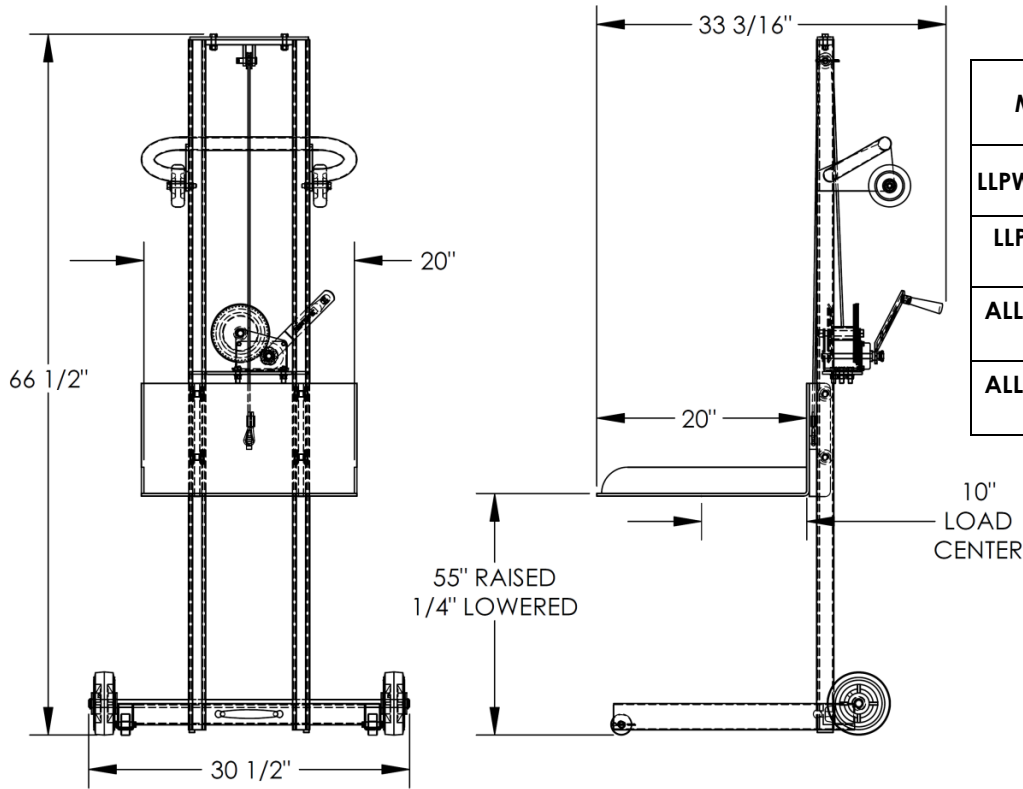
| Model | Net Weight | Capacity |
|------------------------|--------------------|---------------------|
| LLW-202058-FW | 154 LB. 70 KG | 400 lb. 181.8 kg |
| LLW-202058-FWFL | 157 LB. 71.4 KG | 400 lb. 181.8 kg |
| ALLW-2020-FW | 84 LB. 38.2 KG | 400 lb. 181.8 kg |
| LLW-202058-FWWL | 156 LB. 70.9 KG | 400 lb. 181.8 kg |
| ALLW-2020-FWFL | 86 LB. 39.1 KG | 400 lb. 181.8 kg |

LLW-242060-4SFL & ALLW-2420-4SFL



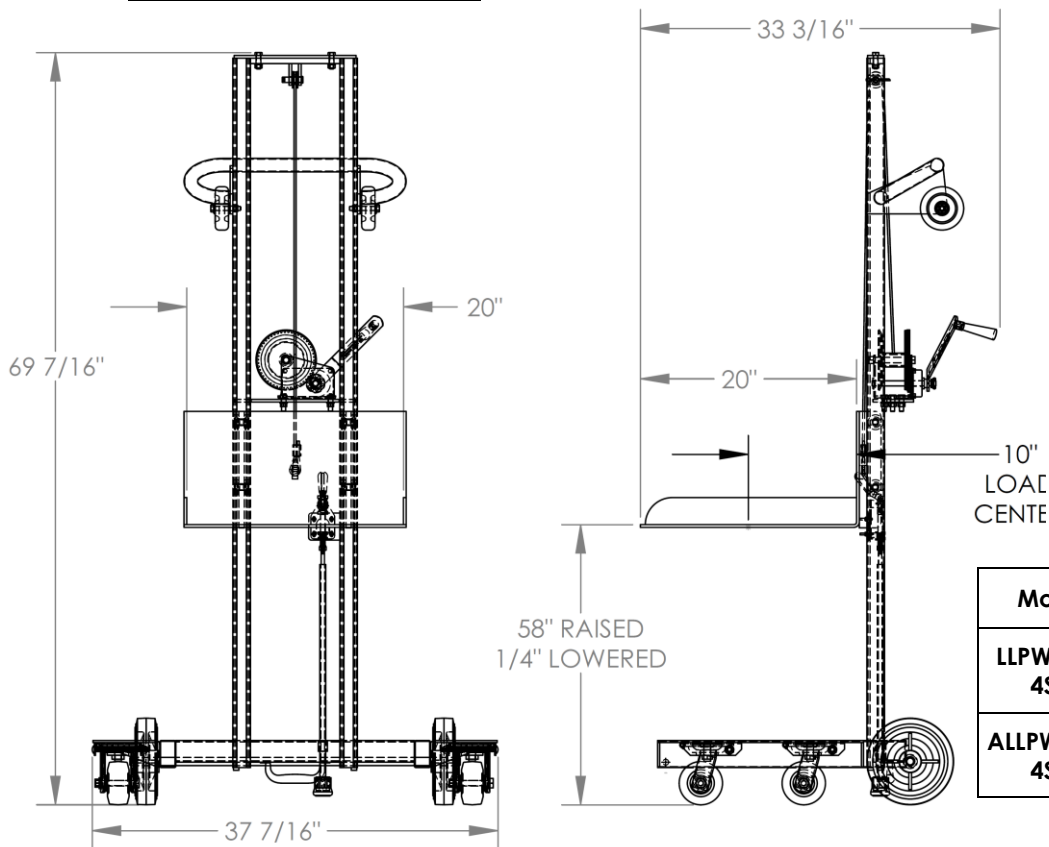
| Model | Net Weight | Capacity |
|------------------------|--------------------|---------------------|
| LLW-242060-4SFL | 215 LB. 97.7 KG | 400 lb. 181.8 kg |
| ALLW-2420-4SFL | 127 LB. 57.7 KG | 400 lb. 181.8 kg |

LLPW-500-FW; ALLPW-500-FW; LLPW-500-FWFL & ALLPW-500-FWFL



| Model | Net Weight | Capacity |
|----------------|--------------------|---------------------|
| LLPW-500-FW | 179 LB. 81.4 KG | 400 LB. 181.8 KG |
| LLPW-500-FWFL | 182 LB. 82.7 KG | 400 LB. 181.8 KG |
| ALLPW-500-FW | 92 LB. 41.8 KG | 400 LB. 181.8 KG |
| ALLPW-500-FWFL | 94 LB. 42.7 KG | 400 LB. 181.8 KG |

LLPW-4SFL & ALLPW-4SFL



| Model | Net weight | Capacity |
|----------------|---------------------|---------------------|
| LLPW-500-4SFL | 238 LB. 108.2 KG | 400 LB. 181.8 KG |
| ALLPW-500-4SLF | 134 LB. 60.9 KG | 400 LB. 181.8 KG |

SIGNAL WORDS

SIGNAL WORDS appear in this manual to draw the reader's attention to important safety-related messages. The following are signal words used in this manual and their definitions.

| | |
|------------------|--|
| ⚠ DANGER | Identifies a hazardous situation which, if not avoided, <u>WILL</u> result in DEATH or SERIOUS INJURY. Use of this signal word is limited to the most extreme situations. |
| ⚠ WARNING | Identifies a hazardous situation which, if not avoided, <u>COULD</u> result in DEATH or SERIOUS INJURY. |
| ⚠ CAUTION | Indicates a hazardous situation which, if not avoided, <u>COULD</u> result in MINOR or MODERATE injury. |
| NOTICE | Identifies practices likely to result in product/property damage, such as operation that might damage the product. |

SAFETY INSTRUCTIONS

Vestil strives to identify foreseeable hazards associated with the use of its products, but no manual can address every conceivable risk. Minimize the likelihood of injury by observing the hazards identified below and by inspecting and maintaining the product as instructed in [INSPECTIONS & MAINTNENANCE](#) on p. 20.

⚠ WARNING

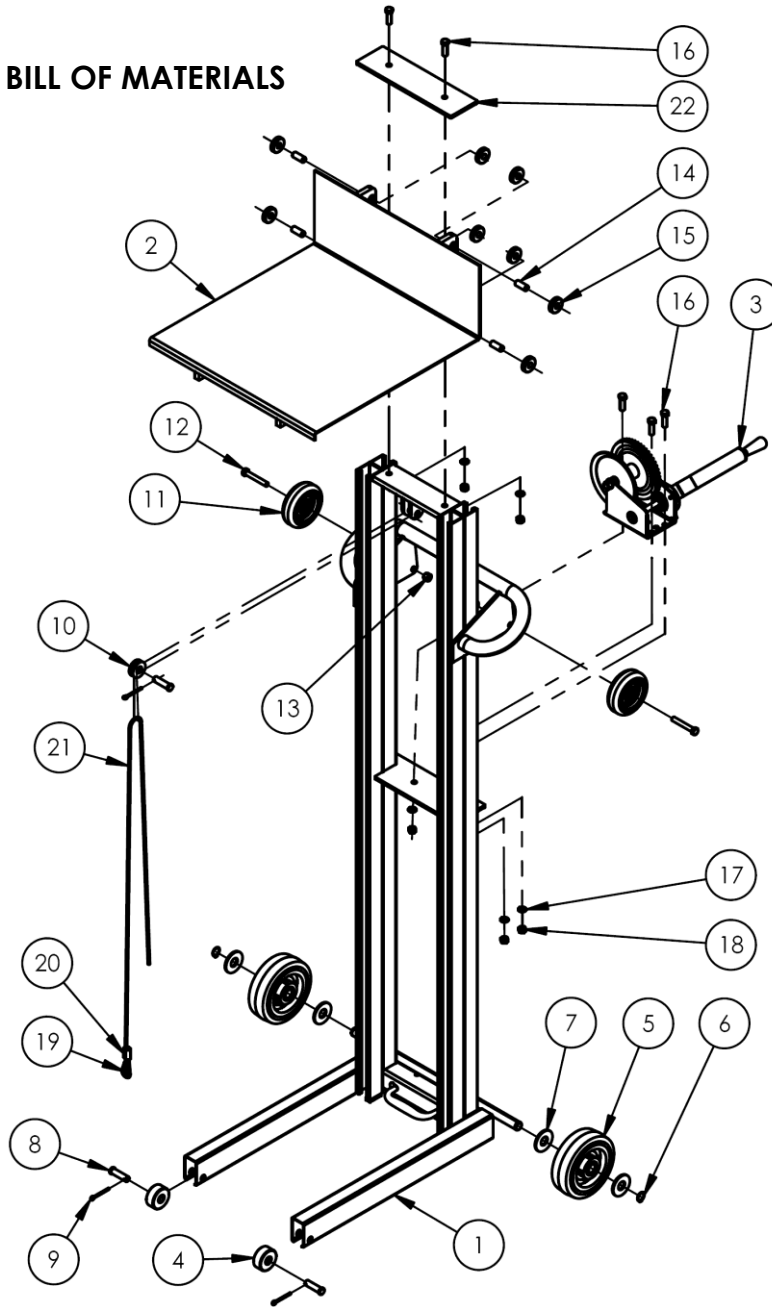
Risks of serious personal injuries or death. Always apply material handling techniques learned during training and use the product properly.

- **Read and understand the entire manual before assembling, using or servicing the product.**
- Inspect the lifter as directed in the [INSPECTIONS & MAINTENANCE](#) instructions on [p. 20](#). DO NOT use the lifter unless it is in satisfactory condition. See [RECORD OF SATISFACTORY CONDITION](#), [p. 19](#).
- ALWAYS inspect the area where the lifter will be used before using it.
- Regardless of whether the lifter is loaded or unloaded, DO NOT stand or travel under the deck.
- Instruct others to stay clear of the device and the supported load during operation.
- Avoid contact with moving parts. In particular, avoid contact with the cable, deck, wheels & rollers.
- DO NOT allow people to ride on the lifter.
- Failure to properly position a load on the deck might result in injury:
 1. DO NOT exceed the maximum rated load (capacity). The rated load appears on label 287 as shown in [LABELING DIAGRAM](#) on p. 21. Also see applicable [SPECIFICATIONS](#) on [p. 2](#) or [3](#).
 2. Center & evenly distribute loads. DO NOT handle off-center loads or loads that cannot be centered.
 3. Start & stop gradually to avoid upsetting the load on the deck. Strap loads to the deck if they might roll or slide.
 4. NEVER tilt the lifter while carrying a load. All wheels and casters must maintain contact with the ground when a load is on the deck.
- ALWAYS observe the deck while raising and lowering it. The deck should rise smoothly and evenly from side-to-side. Watch for binding or jerky movement and listen for unusual noises. Tag the unit "Out of order" and do not use it if you observe anything abnormal.
- Only use this lifter on even, level ground. DO NOT transport loads over inclines or stairs.
- Enlist a coworker to help you lift, load, and unload the unit whenever necessary.
- DO NOT perform maintenance on this product UNLESS it is unloaded and the deck is lowered. If the unit requires repairs, ONLY install manufacturer-approved replacement parts.
- Before leaving the unit unattended, unload it and lower the deck.
- DO NOT use the lifter UNLESS all labels are in place and readable. See [LABELING DIAGRAM](#) on [p. 21](#).
- DO NOT modify this product in any way. Modifying the lifter automatically voids the limited warranty and might make it unsafe to use.

NATIONAL STANDARDS

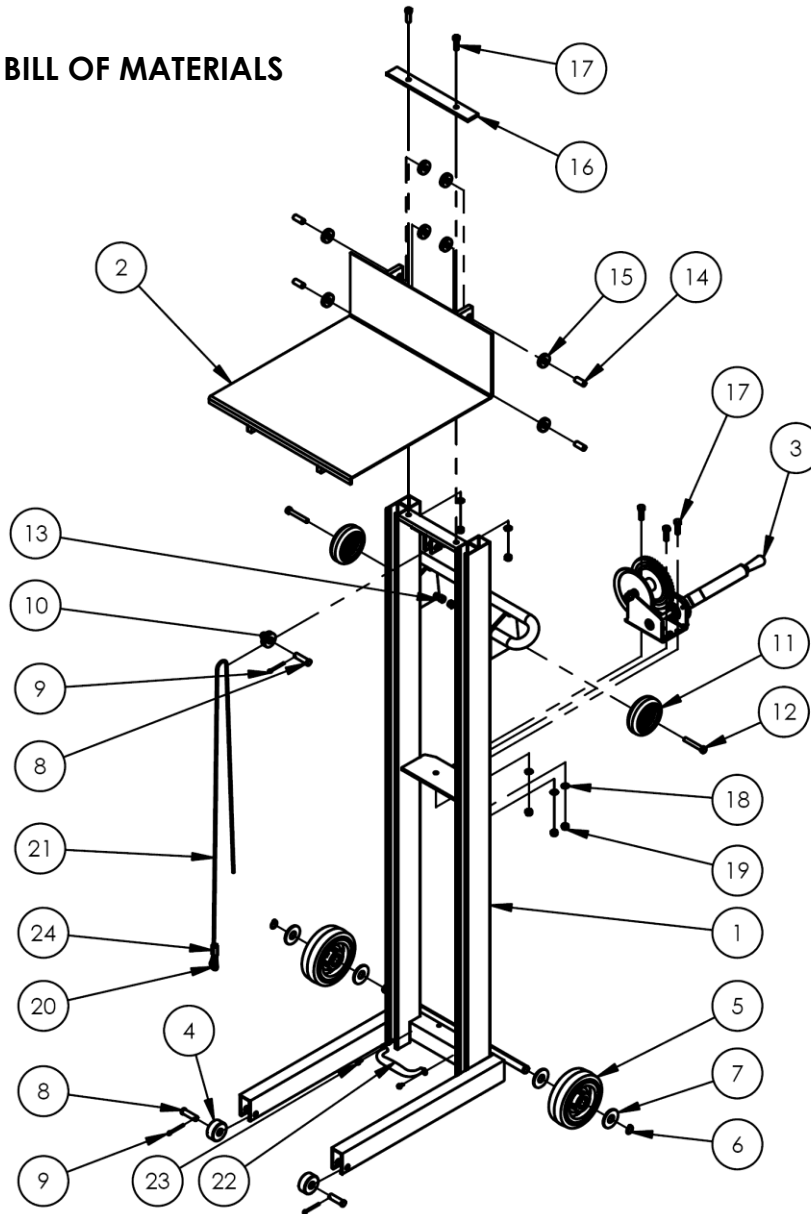
This product is a manually propelled high lift truck. The Industrial Truck Standards Development Foundation (ITSDF) publishes national standard ANSI/ITSDF B56.10 (the "Standard") on its website (www.itsdf.org). The standard is freely downloadable at <http://www.itsdf.org/cue/b56-standards.html>. Before putting the unit into service, acquire a copy of the Standard and apply all recommendations in Part II: For the User. If instructions provided in this manual conflict with instructions in the Standard, then you should apply the instructions in the Standard. Vestil encourages you to immediately contact [TECHNICAL SERVICE](#) to report any differences between instructions in this manual and the Standard.

**LLW-202058-FW
EXPLODED VIEW & BILL OF MATERIALS
21-006-005**



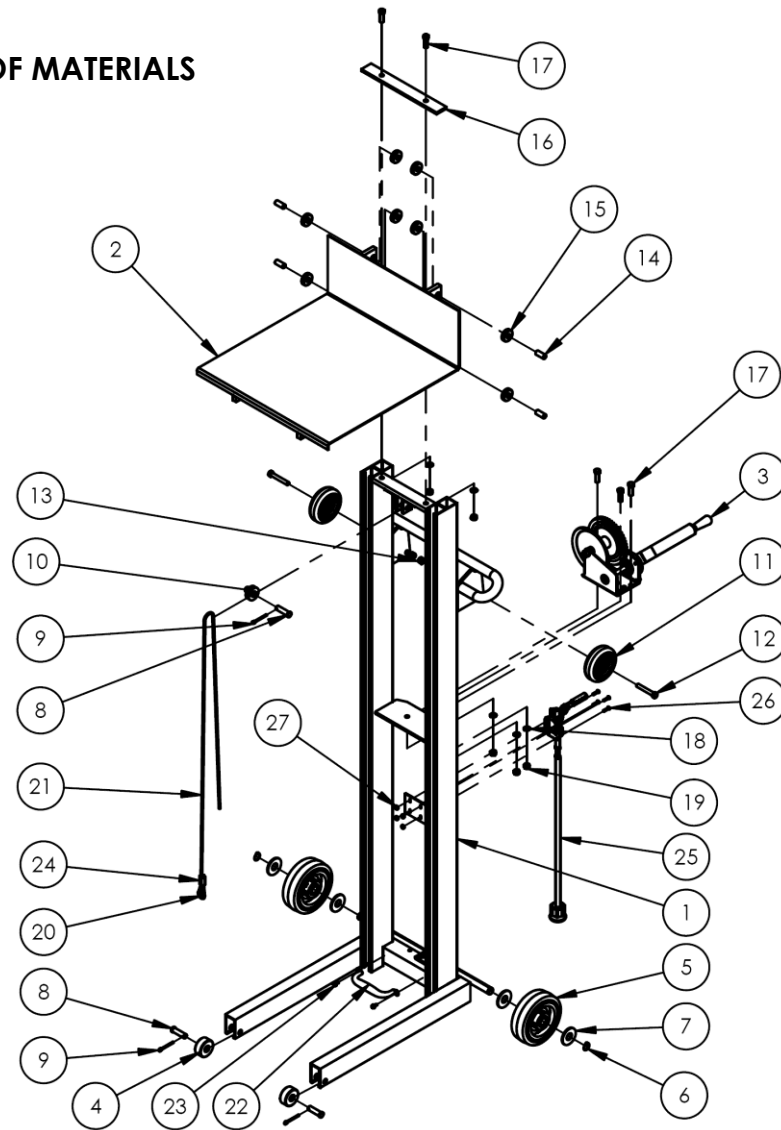
| Item | Part no. | Description | Qty. | Item | Part no. | Description | Qty. |
|------|----------------|--|------|------|------------|---|------|
| 1 | 21-514-005 | WELDMENT, FRAME | 1 | 12 | 11113 | HEX BOLT, GRADE A, PLAIN FINISH, 3/8"-16 X 2-1/2" | 2 |
| 2 | 21-513-002 | WELDMENT, DECK | 1 | 13 | 37024 | NYLON INSERT LOCK NUT, GRADE 2, ZINC FINISH, 3/8"-16 | 2 |
| 3 | 21-042-002-001 | HAND WINCH, ONE PIECE STRAIGHT HANDLE GRIP | 1 | 14 | 21-112-002 | PIN, ROLLER | 4 |
| 4 | 21-527-002 | SUB-ASSEMBLY, ROLLER W/ BUSHING | 2 | 15 | 21-027-003 | ROLLER, GUIDE | 8 |
| 5 | 16-132-058 | WHEEL, POLY ON POLY | 2 | 16 | 11107 | HEX BOLT, GRADE A, ZINC FINISH, 3/8"-16 x 1-1/4" | 5 |
| 6 | 68015 | EXTERNAL RETAINING RING, PHOSPHATE, 3/4" | 2 | 17 | 33622 | SPLIT LOCK WASHER, CARBON STEEL, MEDIUM ZINC FINISH, 3/8" | 5 |
| 7 | 33018 | USS FLAT WASHER, Z PLATED, Ø 3/4" | 4 | 18 | 36106 | HEX NUT, GRADE A, ZINC PLATED, 3/8-16 | 5 |
| 8 | 21-112-003 | PIN, Ø1/2 X 1-15/16 LG RETAINING CLEVIS | 3 | 19 | 21-145-013 | SPECIALTY HARDWARE, THIMBLE | 1 |
| 9 | 65107 | COTTER PIN, ZINC FINISH, Ø5/32" X 2" | 3 | 20 | 99-145-067 | COMPRESSION SLEEVE Ø3/16" X 1" LG | 1 |
| 10 | 21-527-001 | SUB-ASSEMBLY, PULLEY W/BUSHING | 1 | 21 | 21-145-014 | SPECIALTY HARDWARE, Ø3/16" AIR CRAFT CABLE | 1 |
| 11 | 16-132-009 | PP-4/1.25-W | 2 | 22 | 21-017-155 | BAR, RETAINER | 1 |

**ALLW-2020-FW
EXPLODED VIEW & BILL OF MATERIALS
42-006-004**



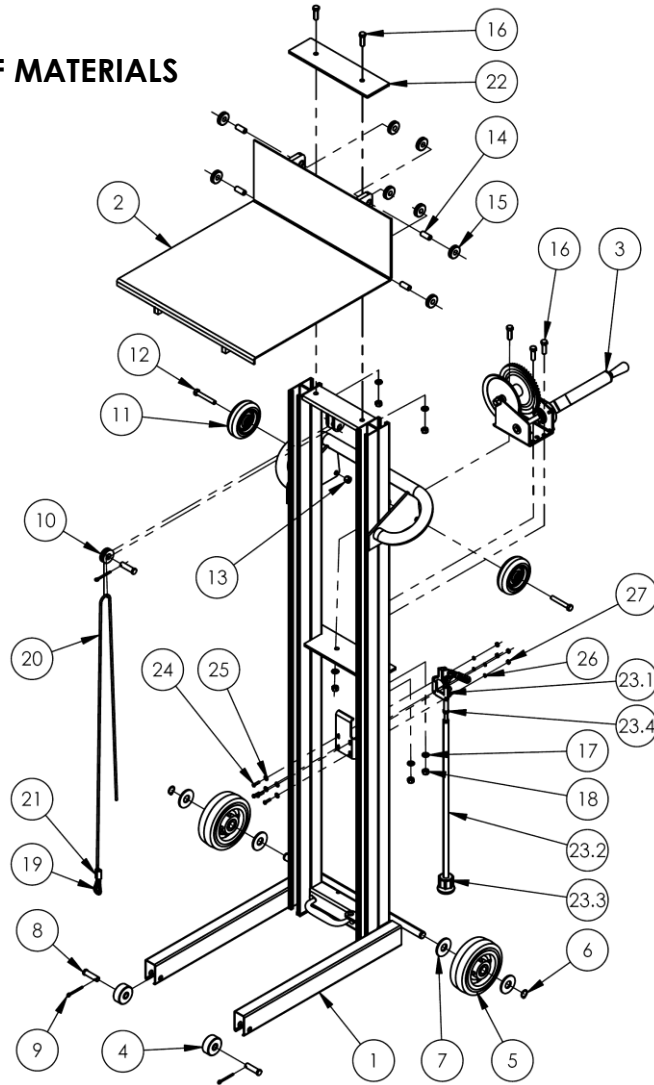
| Item | Part no. | Description | Qty. | Item | Part no. | Description | Qty. |
|------|----------------|---|------|------|----------------|---|------|
| 1 | 42-514-008 | WELDMENT, FRAME | 1 | 13 | 37024 | NYLON INSERT LOCK NUT, GRADE 2, ZINC FINISH, 3/8"-16 | 2 |
| 2 | 42-513-006 | WELDMENT, DECK | 1 | 14 | 21-112-002 | PIN. ROLLER | 4 |
| 3 | 21-042-002-001 | HAND WINCH, ONE PIECE STRAIGHT HANDLE GRIP | 1 | 15 | 21-027-003 | ROLLER, GUIDE ROLLER | 8 |
| 4 | 21-527-002 | SUB-ASSEMBLY, ROLLER W/ BUSHING | 2 | 16 | 21-017-087 | STIFFENER, BAR | 1 |
| 5 | 16-132-058 | WHEEL, POLY ON POLY | 2 | 17 | 11107 | HEX BOLT, GRADE A, ZINC FINISH, 3/8"-16 x 1-1/4" | 5 |
| 6 | 68015 | EXTERNAL RETAINING RING, PHOSPHATE, 3/4" | 2 | 18 | 33622 | SPLIT LOCK WASHER, CARBON STEEL, MEDIUM ZINC FINISH, 3/8" | 5 |
| 7 | 33018 | USS FLAT WASHER, Z PLATED, Ø 3/4" | 4 | 19 | 36106 | HEX NUT, GRADE A, ZINC PLATED, 3/8-16 | 5 |
| 8 | 21-112-003 | PIN, Ø1/2 X 1-15/16 LG RETAINING CLEVIS | 3 | 20 | 21-145-013 | SPECIALTY HARDWARE, THIMBLE | 1 |
| 9 | 65107 | COTTER PIN, ZINC FINISH, Ø5/32" X 2" | 3 | 21 | 21-145-014 | SPECIALTY HARDWARE, Ø3/16" AIR CRAFT CABLE | 1 |
| 10 | 21-527-001 | SUB-ASSEMBLY, PULLEY W/BUSHING | 1 | 22 | 13-025-004-002 | HANDLE, WITH HOLES | 1 |
| 11 | 16-132-009 | PP-4/1.25-W | 2 | 23 | 31802 | SCREW, SELF-TAPPING SCREW | 2 |
| 12 | 11113 | HEX BOLT, GRADE A, PLAIN FINISH, 3/8"-16 X 2-1/2" | 2 | 24 | 99-145-067 | COMPRESSION SLEEVE Ø3/16" X 1" LG | 1 |

**ALLW-2020-FWFL
EXPLODED VIEW & BILL OF MATERIALS
42-006-028**



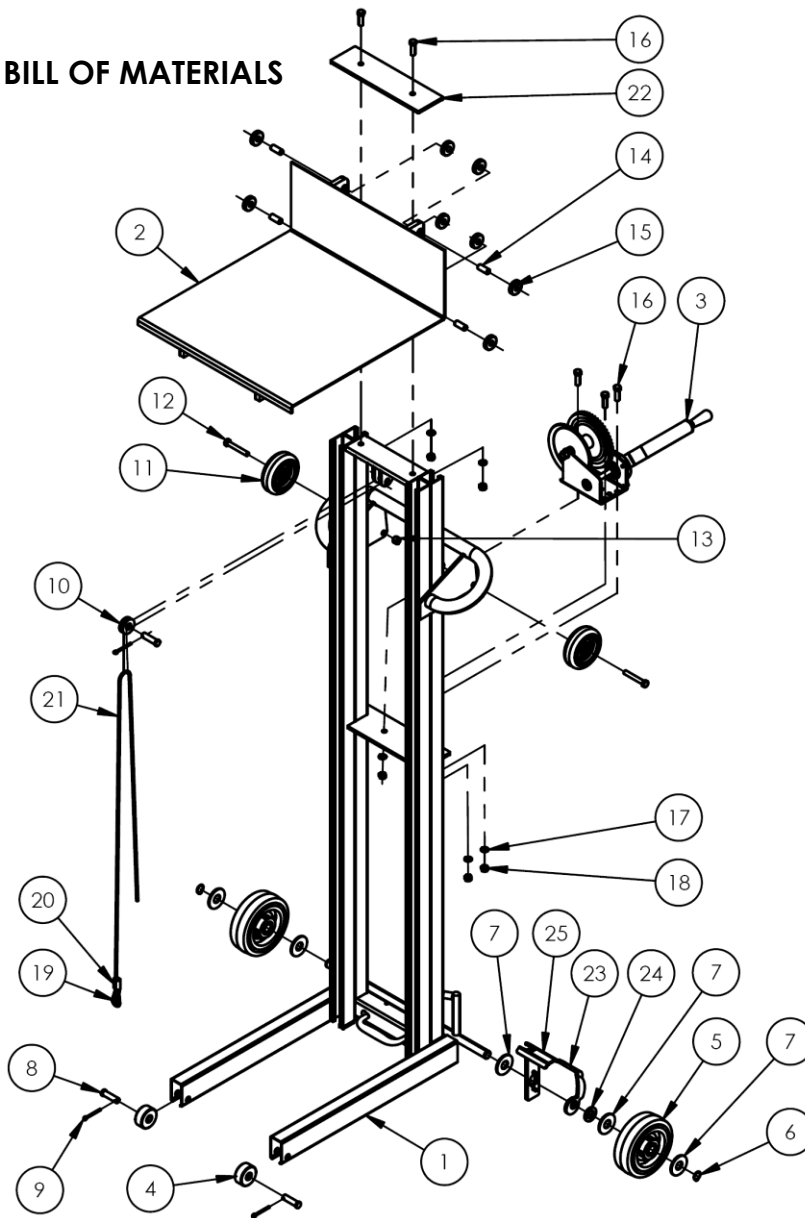
| Item | Part no. | Description | Qty. | Item | Part no. | Description | Qty. |
|------|----------------|--|------|------|----------------|---|------|
| 1 | 42-514-034 | WELDMENT, FRAME | 1 | 15 | 21-027-003 | ROLLER, GUIDE ROLLER | 8 |
| 2 | 42-513-006 | WELDMENT, DECK | 1 | 16 | 21-017-087 | STIFFENER, BAR | 1 |
| 3 | 21-042-002-001 | HAND WINCH, ONE PIECE STRAIGHT HANDLE GRIP | 1 | 17 | 11107 | HEX BOLT, GRADE A, ZINC FINISH, 3/8"-16 x 1-1/4" | 5 |
| 4 | 21-527-002 | SUB-ASSEMBLY, ROLLER W/ BUSHING | 2 | 18 | 33622 | SPLIT LOCK WASHER, CARBON STEEL, MEDIUM ZINC FINISH, 3/8" | 5 |
| 5 | 16-132-058 | WHEEL, POLY ON POLY | 2 | 19 | 36106 | HEX NUT, GRADE A, ZINC PLATED, 3/8-16 | 5 |
| 6 | 68015 | EXTERNAL RETAINING RING,PHOSPHATE, 3/4" | 2 | 20 | 21-145-013 | SPECIALTY HARDWARE, THIMBLE | 1 |
| 7 | 33018 | USS FLAT WASHER, Z PLATED, Ø 3/4" | 4 | 21 | 21-145-014 | SPECIALTY HARDWARE, Ø3/16" AIR CRAFT CABLE | 1 |
| 8 | 21-112-003 | PIN, Ø1/2 X 1-15/16 LG RETAINING CLEVIS | 3 | 22 | 13-025-004-002 | HANDLE, WITH HOLES | 1 |
| 9 | 65107 | COTTER PIN, ZINC FINISH, Ø5/32" X 2" | 3 | 23 | 31802 | SCREW, SELF-TAPPING SCREW | 2 |
| 10 | 21-527-001 | SUB-ASSEMBLY, PULLEY W/BUSHING | 1 | 24 | 99-145-067 | COMPRESSION SLEEVE Ø3/16" X 1" LG | 1 |
| 11 | 16-132-009 | PP-4/1.25-W | 2 | 25 | 21-001-132 | FINAL ASSEMBLY W/O SHIPPING | 1 |
| 12 | 11113 | HEX BOLT, GRADE A, PLAIN FINISH, 3/8"-16 X 2-1/2" | 2 | 26 | 27560 | #10-32 x 3/4 LG SLOTTED MACHINE SCREW | 4 |
| 13 | 37024 | NYLON INSERT LOCK NUT, GRADE 2, ZINC FINISH, 3/8"-16 | 2 | 27 | 37015 | 10-32 NYLOCK NUT Z-PLATED | 4 |
| 14 | 21-112-002 | PIN. ROLLER | 4 | | | | |

**LLW-202058-FWFL
EXPLODED VIEW & BILL OF MATERIALS
21-006-157**



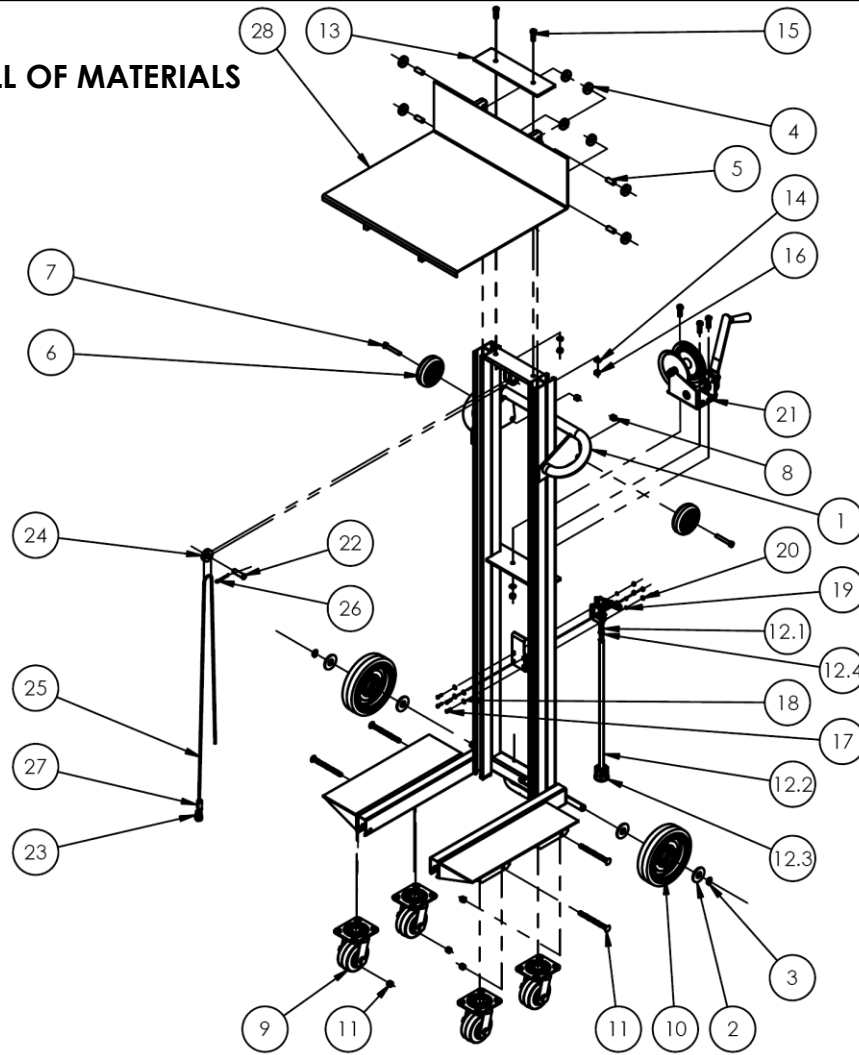
| Item | Part no. | Description | Qty. | Item | Part no. | Description | Qty. |
|------|----------------|--|------|------|------------|---|------|
| 1 | 21-514-171 | WELDMENT, FRAME | 1 | 17 | 33622 | SPLIT LOCK WASHER, CARBON STEEL, MEDIUM ZINC FINISH, 3/8" | 5 |
| 2 | 21-513-002 | WELDMENT, DECK | 1 | 18 | 36106 | HEX NUT, GRADE A, ZINC PLATED, 3/8-16 | 5 |
| 3 | 21-042-002-001 | HAND WINCH, ONE PIECE STRAIGHT HANDLE GRIP | 1 | 19 | 21-145-013 | SPECIALTY HARDWARE, THIMBLE | 1 |
| 4 | 21-527-002 | SUB-ASSEMBLY, ROLLER W/ BUSHING | 2 | 20 | 21-145-014 | SPECIALTY HARDWARE, Ø3/16" AIR CRAFT CABLE | 1 |
| 5 | 16-132-058 | WHEEL, POLY ON POLY | 2 | 21 | 99-145-067 | COMPRESSION SLEEVE Ø3/16" X 1" LG | 1 |
| 6 | 68015 | EXTERNAL RETAINING RING, PHOSPHATE, 3/4" | 2 | 22 | 21-017-155 | BAR, RETAINER | 1 |
| 7 | 33018 | USS FLAT WASHER, Z PLATED, Ø 3/4" | 4 | 23 | 21-001-132 | FINAL ASSEMBLY W/O SHIPPING | 1 |
| 8 | 21-112-003 | PIN, Ø1/2 X 1-15/16 LG RETAINING CLEVIS | 3 | 23.1 | 21-145-001 | SPECIALTY HARDWARE, PUSH-PULL CLAMP | 1 |
| 9 | 65107 | COTTER PIN, ZINC FINISH, Ø5/32" X 2" | 3 | 23.2 | 21-537-006 | WELDMENT, FLOOR LOCK | 1 |
| 10 | 21-527-001 | SUB-ASSEMBLY, PULLEY W/BUSHING | 1 | 23.3 | 14-037-005 | RUBBER STOP CRUTCH TIP | 1 |
| 11 | 16-132-009 | PP-4/1.25-W | 2 | 23.4 | 40307 | HEX NUT, CLASS 8, ZINC PLATED, M8-1.25 | 1 |
| 12 | 11113 | HEX BOLT, GRADE A, PLAIN FINISH, 3/8"-16 X 2-1/2" | 2 | 24 | 27560 | #10-32 x 3/4 LG SLOTTED MACHINE SCREW | 4 |
| 13 | 37024 | NYLON INSERT LOCK NUT, GRADE 2, ZINC FINISH, 3/8"-16 | 2 | 25 | 33074 | SAE FLAT WASHER, Z-PLATED, 3/16" (#10) | 4 |
| 14 | 21-112-002 | PIN, ROLLER | 4 | 26 | 33614 | LOCK WASHER, Z-PLATED, #10 | 4 |
| 15 | 21-027-003 | ROLLER, GUIDE | 8 | 27 | 36030 | 10-32 HEX NUT | 4 |
| 16 | 11107 | HEX BOLT, GRADE A, ZINC FINISH, 3/8"-16 x 1-1/4" | 5 | | | | |

**LLW-202058-FWWL
EXPLODED VIEW & BILL OF MATERIALS
21-006-162**



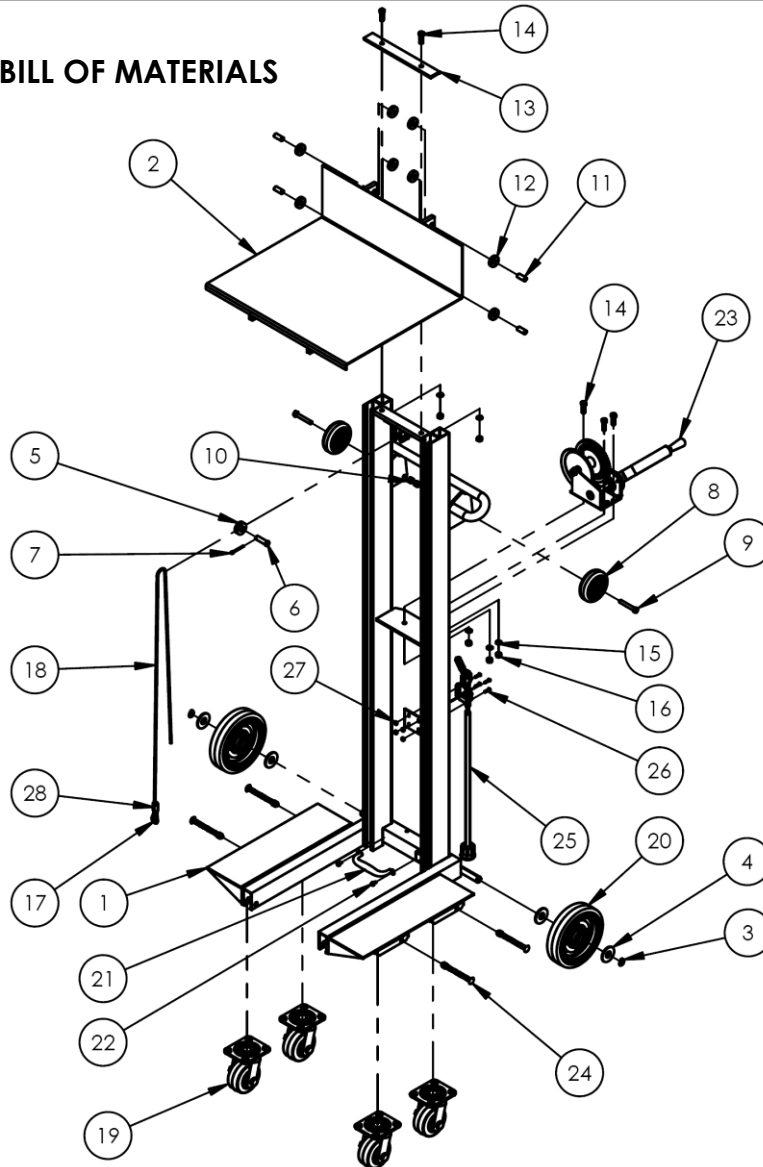
| Item | Part no. | Description | Qty. | Item | Part no. | Description | Qty. |
|------|----------------|--|------|------|------------|---|------|
| 1 | 21-514-175 | WELDMENT, FRAME | 1 | 14 | 21-112-002 | PIN. ROLLER | 4 |
| 2 | 21-513-002 | WELDMENT, DECK | 1 | 15 | 21-027-003 | ROLLER, GUIDE | 8 |
| 3 | 21-042-002-001 | HAND WINCH, ONE PIECE STRAIGHT HANDLE GRIP | 1 | 16 | 11107 | HEX BOLT, GRADE A, ZINC FINISH, 3/8"-16 x 1-1/4" | 5 |
| 4 | 21-527-002 | SUB-ASSEMBLY, ROLLER W/ BUSHING | 2 | 17 | 33622 | SPLIT LOCK WASHER, CARBON STEEL, MEDIUM ZINC FINISH, 3/8" | 5 |
| 5 | 16-132-058 | WHEEL, POLY ON POLY | 2 | 18 | 36106 | HEX NUT, GRADE A, ZINC PLATED, 3/8-16 | 5 |
| 6 | 68015 | EXTERNAL RETAINING RING,PHOSPHATE, 3/4" | 2 | 19 | 21-145-013 | SPECIALTY HARDWARE, THIMBLE | 1 |
| 7 | 33018 | USS FLAT WASHER, Z PLATED, Ø 3/4" | 5 | 20 | 99-145-067 | COMPRESSION SLEEVE Ø3/16" X 1" LG | 1 |
| 8 | 21-112-003 | PIN, Ø1/2 X 1-15/16 LG RETAINING CLEVIS | 3 | 21 | 21-145-014 | SPECIALTY HARDWARE, Ø3/16" AIR CRAFT CABLE | 1 |
| 9 | 65107 | COTTER PIN, ZINC FINISH, Ø5/32" X 2" | 3 | 22 | 21-017-155 | BAR, RETAINER | 1 |
| 10 | 21-527-001 | SUB-ASSEMBLY, PULLEY W/BUSHING | 1 | 23 | 21-037-015 | LOCK, BRAKE LEVER | 1 |
| 11 | 16-132-009 | PP-4/1.25-W | 2 | 24 | 21-014-227 | FRAME, FLAT WASHER | 1 |
| 12 | 11113 | HEX BOLT, GRADE A, PLAIN FINISH, 3/8"-16 X 2-1/2" | 2 | 25 | 21-537-010 | WELDMENT, WHEEL BRAKE | 1 |
| 13 | 37024 | NYLON INSERT LOCK NUT, GRADE 2, ZINC FINISH, 3/8"-16 | 2 | | | | |

LLW-242060-4SFL
EXPLODED VIEW & BILL OF MATERIALS
21-006-007



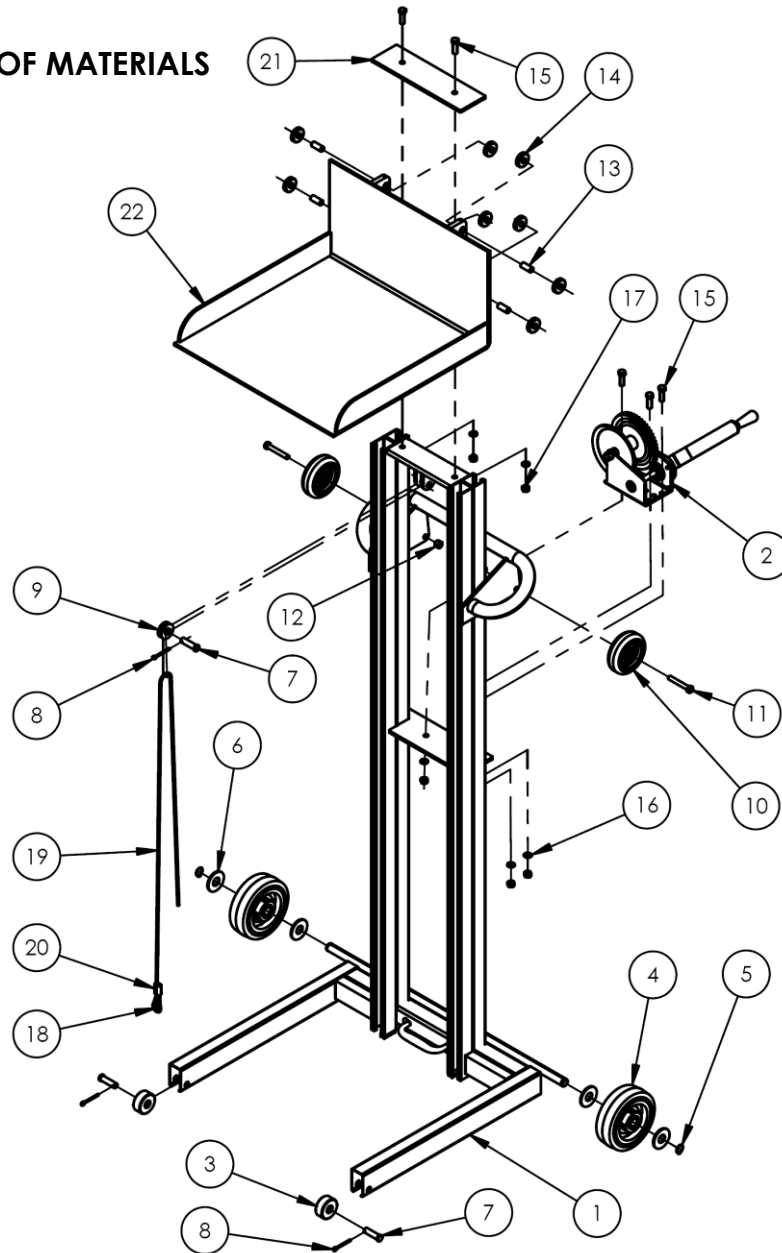
| Item | Part no. | Description | Qty. | Item | Part no. | Description | Qty. |
|------|------------|--|------|------|----------------|---|------|
| 1 | 21-514-007 | WELDMENT, FRAME | 1 | 13 | 21-017-155 | BAR, RETAINER | 1 |
| 2 | 33018 | USS FLAT WASHER, Z PLATED, Ø 3/4" | 4 | 14 | 33622 | SPLIT LOCK WASHER, CARBON STEEL, MEDIUM ZINC FINISH, 3/8" | 5 |
| 3 | 68015 | EXTERNAL RETAINING RING,PHOSPHATE, 3/4" | 2 | 15 | 11107 | HEX BOLT, GRADE A, ZINC FINISH, 3/8"-16 x 1-1/4" | 5 |
| 4 | 21-027-003 | ROLLER, GUIDE | 8 | 16 | 36106 | HEX NUT, GRADE A, ZINC PLATED, 3/8-16 | 5 |
| 5 | 21-112-002 | PIN, ROLLER | 4 | 17 | 27560 | #10-32 x 3/4 LG SLOTTED MACHINE SCREW | 4 |
| 6 | 16-132-009 | PP-4/1.25-W | 2 | 18 | 33074 | SAE FLAT WASHER, Z-PLATED, 3/16" (#10) | 4 |
| 7 | 11113 | HEX BOLT, GRADE A, PLAIN FINISH, 3/8"-16 X 2-1/2" | 2 | 19 | 33614 | LOCK WASHER, Z-PLATED, #10 | 4 |
| 8 | 37024 | NYLON INSERT LOCK NUT, GRADE 2, ZINC FINISH, 3/8"-16 | 2 | 20 | 36030 | 10-32 HEX NUT | 4 |
| 9 | 16-132-011 | CASTER SWIVEL, 4X2 | 4 | 21 | 21-042-002-001 | HAND WINCH, ONE PIECE STRAIGHT HANDLE GRIP | 1 |
| 10 | 16-132-200 | CASTER, PP-8/2-W, RED | 2 | 22 | 21-112-003 | PIN, Ø1/2 X 1-15/16 LG RETAINING CLEVIS | 1 |
| 11 | 99-612-001 | PIN, BULLDOG BOLT AND NUT ASSEMBLY | 4 | 23 | 21-145-013 | SPECIALTY HARDWARE, THIMBLE | 1 |
| 12 | 21-001-132 | FINAL ASSEMBLY W/O SHIPPING | 1 | 24 | 21-527-001 | SUB-ASSEMBLY, PULLEY W/BUSHING | 1 |
| 12.1 | 21-145-001 | SPECIALTY HARDWARE, PUSH-PULL CLAMP | 1 | 25 | 21-145-014 | SPECIALTY HARDWARE, Ø3/16" AIR CRAFT CABLE | 1 |
| 12.2 | 21-537-006 | WELDMENT, FLOOR LOCK | 1 | 26 | 65107 | COTTER PIN, ZINC FINISH, Ø5/32" X 2" | 1 |
| 12.3 | 14-037-005 | RUBBER STOP CRUTCH TIP | 1 | 27 | 99-145-067 | COMPRESSION SLEEVE Ø3/16" X 1" LG | 1 |
| 12.4 | 40307 | HEX NUT, CLASS 8, ZINC PLATED, M8-1.25 | 1 | 28 | 21-513-003 | WELDMENT, DECK | 1 |

ALLW-2420-4SFL
EXPLODED VIEW & BILL OF MATERIALS
42-006-019



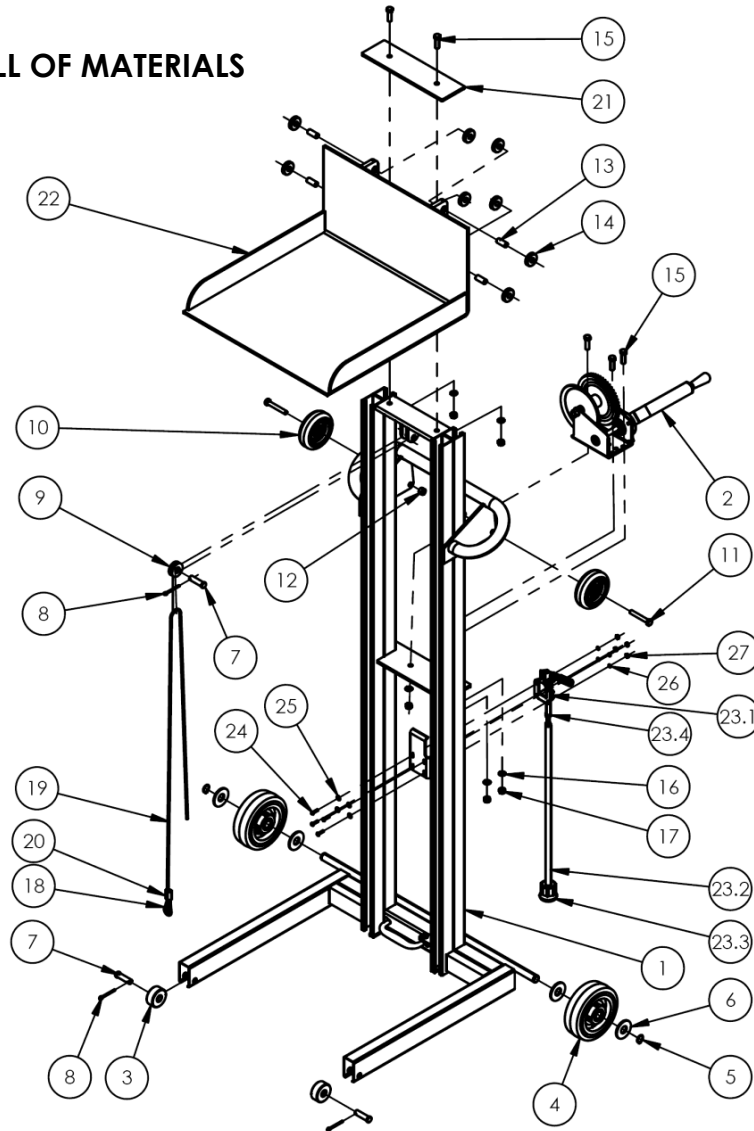
| Item | Part no. | Description | Qty. | Item | Part no. | Description | Qty. |
|------|------------|--|------|------|----------------|---|------|
| 1 | 42-514-014 | WELDMENT, FRAME | 1 | 15 | 33622 | SPLIT LOCK WASHER, CARBON STEEL, MEDIUM ZINC FINISH, 3/8" | 5 |
| 2 | 42-513-007 | WELDMENT, DECK | 1 | 16 | 36106 | HEX NUT, GRADE A, ZINC PLATED, 3/8-16 | 5 |
| 3 | 68015 | EXTERNAL RETAINING RING,PHOSPHATE, 3/4" | 2 | 17 | 21-145-013 | SPECIALTY HARDWARE, THIMBLE | 1 |
| 4 | 33018 | USS FLAT WASHER, Z PLATED, Ø 3/4" | 4 | 18 | 21-145-014 | SPECIALTY HARDWARE, Ø3/16" AIR CRAFT CABLE | 1 |
| 5 | 21-527-001 | SUB-ASSEMBLY, PULLEY W/BUSHING | 1 | 19 | 16-132-011 | CASTER SWIVEL, 4X2 | 4 |
| 6 | 21-112-003 | PIN, Ø1/2 X 1-15/16 LG RETAINING CLEVIS | 1 | 20 | 16-132-200 | CASTER, PP-8/2-W, RED | 2 |
| 7 | 65107 | COTTER PIN, ZINC FINISH, Ø5/32" X 2" | 1 | 21 | 13-025-004-002 | HANDLE, WITH HOLES | 1 |
| 8 | 16-132-009 | PP-4/1.25-W | 2 | 22 | 31802 | SCREW, SELF-TAPPING SCREW | 2 |
| 9 | 11113 | HEX BOLT, GRADE A, PLAIN FINISH, 3/8"-16 X 2-1/2" | 2 | 23 | 21-042-002-001 | HAND WINCH, ONE PIECE STRAIGHT HANDLE GRIP | 1 |
| 10 | 37024 | NYLON INSERT LOCK NUT, GRADE 2, ZINC FINISH, 3/8"-16 | 2 | 24 | 99-612-001 | PIN, BULLDOG BOLT AND NUT ASSEMBLY | 4 |
| 11 | 21-112-002 | PIN. ROLLER | 4 | 25 | 21-001-132 | FINAL ASSEMBLY W/O SHIPPING | 1 |
| 12 | 21-027-003 | ROLLER, GUIDE ROLLER | 8 | 26 | 27560 | # 10-32 x 3/4 LG SLOTTED MACHINE SCREW | 4 |
| 13 | 21-017-087 | STIFFENER, BAR | 1 | 27 | 37015 | 10-32 NYLOCK NUT Z-PLATED | 4 |
| 14 | 11107 | HEX BOLT, GRADE A, ZINC FINISH, 3/8"-16 x 1-1/4" | 5 | 28 | 99-145-067 | COMPRESSION SLEEVE Ø3/16" X 1" LG | 1 |

**LLPW-500-FW
EXPLODED VIEW & BILL OF MATERIALS
42-006-011**



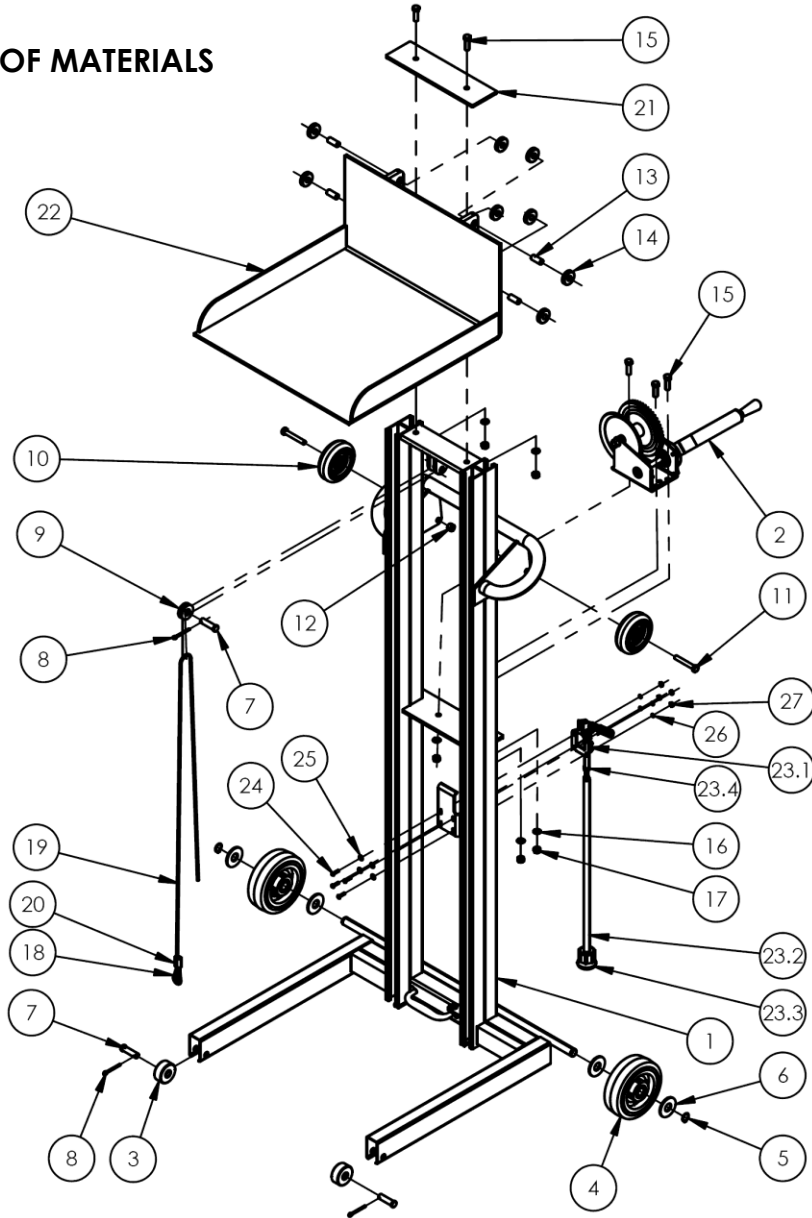
| Item | Part no. | Description | Qty. | Item | Part no. | Description | Qty. |
|------|----------------|---|------|------|------------|---|------|
| 1 | 33-514-056 | WELDMENT, FRAME | 1 | 12 | 37024 | NYLON INSERT LOCK NUT, GRADE 2, ZINC FINISH, 3/8"-16 | 2 |
| 2 | 21-042-002-001 | HAND WINCH, ONE PIECE STRAIGHT HANDLE GRIP | 1 | 13 | 21-112-002 | PIN. ROLLER | 4 |
| 3 | 21-527-002 | SUB-ASSEMBLY, ROLLER W/ BUSHING | 2 | 14 | 21-027-003 | ROLLER, GUIDE | 8 |
| 4 | 16-132-058 | WHEEL, POLY ON POLY | 2 | 15 | 11107 | HEX BOLT, GRADE A, ZINC FINISH, 3/8"-16 x 1-1/4" | 5 |
| 5 | 68015 | EXTERNAL RETAINING RING,PHOSPHATE, 3/4" | 2 | 16 | 33622 | SPLIT LOCK WASHER, CARBON STEEL, MEDIUM ZINC FINISH, 3/8" | 5 |
| 6 | 33018 | USS FLAT WASHER, Z PLATED, Ø 3/4" | 4 | 17 | 36106 | HEX NUT, GRADE A, ZINC PLATED, 3/8-16 | 5 |
| 7 | 21-112-003 | PIN, Ø1/2 X 1-15/16 LG RETAINING CLEVIS | 3 | 18 | 21-145-013 | SPECIALTY HARDWARE, THIMBLE | 1 |
| 8 | 65107 | COTTER PIN, ZINC FINISH, Ø5/32" X 2" | 3 | 19 | 21-145-014 | SPECIALTY HARDWARE, Ø3/16" AIR CRAFT CABLE | 1 |
| 9 | 21-527-001 | SUB-ASSEMBLY, PULLEY W/BUSHING | 1 | 20 | 99-145-067 | COMPRESSION SLEEVE Ø3/16" X 1" LG | 1 |
| 10 | 16-132-009 | PP-4/1.25-W | 2 | 21 | 21-017-155 | BAR, RETAINER | 1 |
| 11 | 11113 | HEX BOLT, GRADE A, PLAIN FINISH, 3/8"-16 X 2-1/2" | 2 | 22 | 33-513-032 | WELDMENT, DECK | 1 |

**LLPW-500-FWFL
EXPLODED VIEW & BILL OF MATERIALS
21-006-159**



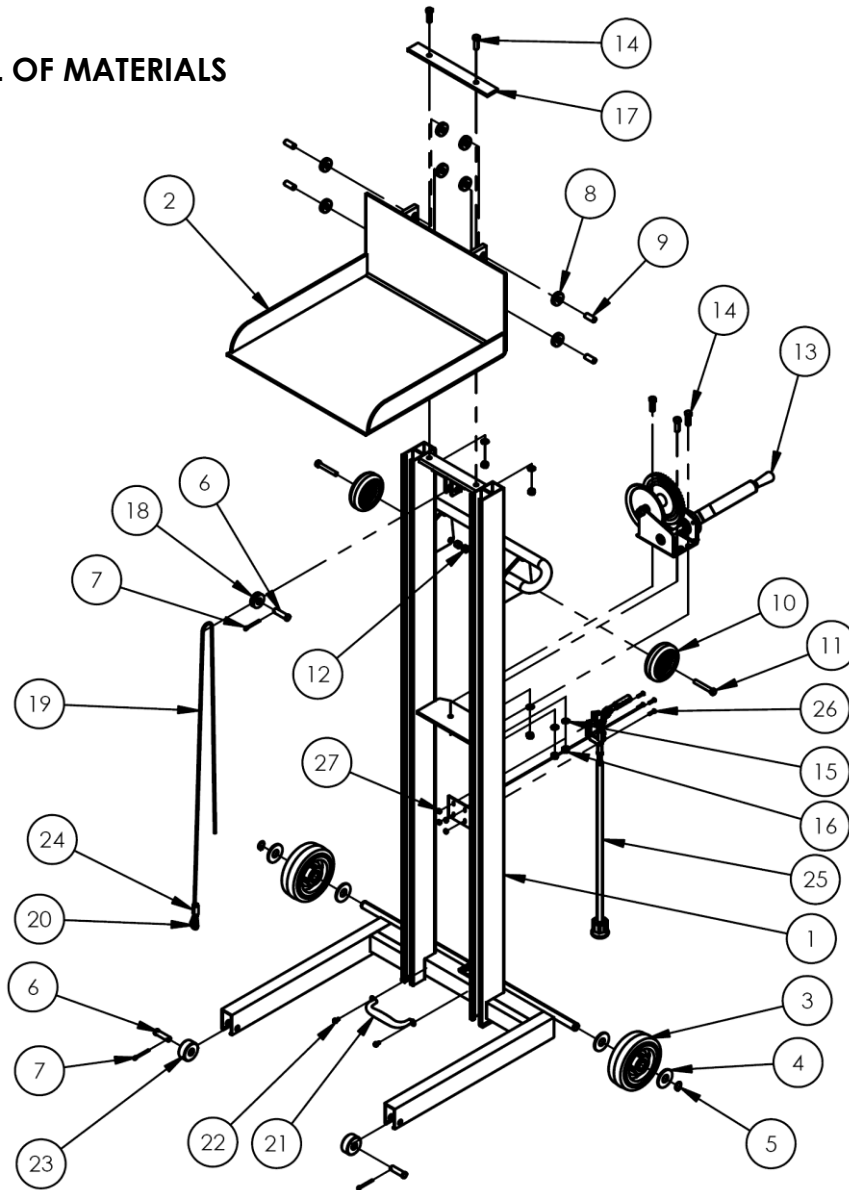
| Item | Part no. | Description | Qty. | Item | Part no. | Description | Qty. |
|------|----------------|---|------|------|------------|--|------|
| 1 | 21-514-173 | WELDMENT, FRAME | 1 | 17 | 36106 | HEX NUT, GRADE A, ZINC PLATED, 3/8-16 | 5 |
| 2 | 21-042-002-001 | HAND WINCH, ONE PIECE STRAIGHT HANDLE GRIP | 1 | 18 | 21-145-013 | SPECIALTY HARDWARE, THIMBLE | 1 |
| 3 | 21-527-002 | SUB-ASSEMBLY, ROLLER W/ BUSHING | 2 | 19 | 21-145-014 | SPECIALTY HARDWARE, Ø3/16" AIR CRAFT CABLE | 1 |
| 4 | 16-132-058 | WHEEL, POLY ON POLY | 2 | 20 | 99-145-067 | COMPRESSION SLEEVE Ø3/16" X 1" LG | 1 |
| 5 | 68015 | EXTERNAL RETAINING RING,PHOSPHATE, 3/4" | 2 | 21 | 21-017-155 | BAR, RETAINER | 1 |
| 6 | 33018 | USS FLAT WASHER, Z PLATED, Ø 3/4" | 4 | 22 | 33-513-032 | WELDMENT, DECK | 1 |
| 7 | 21-112-003 | PIN, Ø1/2 X 1-15/16 LG RETAINING CLEVIS | 3 | 23 | 21-001-132 | FINAL ASSEMBLY W/O SHIPPING | 1 |
| 8 | 65107 | COTTER PIN, ZINC FINISH, Ø5/32" X 2" | 3 | 23.1 | 21-145-001 | SPECIALTY HARDWARE, PUSH-PULL CLAMP | 1 |
| 9 | 21-527-001 | SUB-ASSEMBLY, PULLEY W/BUSHING | 1 | 23.2 | 21-537-006 | WELDMENT, FLOOR LOCK | 1 |
| 10 | 16-132-009 | PP-4/1.25-W | 2 | 23.3 | 14-037-005 | RUBBER STOP CRUTCH TIP | 1 |
| 11 | 11113 | HEX BOLT, GRADE A, PLAIN FINISH, 3/8"-16 X 2-1/2" | 2 | 23.4 | 40307 | HEX NUT, CLASS 8, ZINC PLATED, M8-1.25 | 1 |
| 12 | 37024 | NYLON INSERT LOCK NUT, GRADE 2, ZINC FINISH, 3/8"-16 | 2 | 24 | 27560 | #10-32 x 3/4 LG SLOTTED MACHINE SCREW | 4 |
| 13 | 21-112-002 | PIN. ROLLER | 4 | 25 | 33074 | SAE FLAT WASHER, Z-PLATED, 3/16" (#10) | 4 |
| 14 | 21-027-003 | ROLLER, GUIDE | 8 | 26 | 33614 | LOCK WASHER, Z-PLATED, #10 | 4 |
| 15 | 11107 | HEX BOLT, GRADE A, ZINC FINISH, 3/8"-16 x 1-1/4" | 5 | 27 | 36030 | 10-32 HEX NUT | 4 |
| 16 | 33622 | SPLIT LOCK WASHER, CARBON STEEL, MEDIUM ZINC FINISH, 3/8" | 5 | | | | |

**ALLPW-500-FW
EXPLODED VIEW & BILL OF MATERIALS
42-006-015**



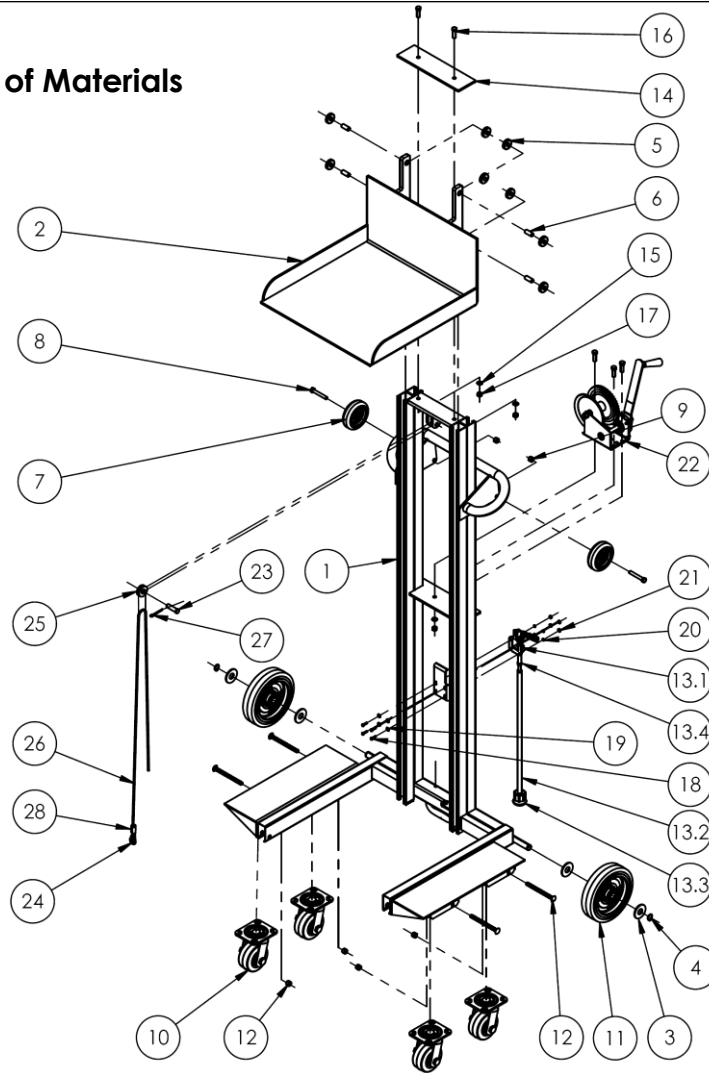
| Item | Part no. | Description | Qty. | Item | Part no. | Description | Qty. |
|------|------------|--|------|------|----------------|---|------|
| 1 | 42-514-016 | WELDMENT, FRAME | 1 | 13 | 21-042-002-001 | HAND WINCH, ONE PIECE STRAIGHT HANDLE GRIP | 1 |
| 2 | 21-513-038 | WELDMENT, DECK | 1 | 14 | 11107 | HEX BOLT, GRADE A, ZINC FINISH, 3/8"-16 x 1-1/4" | 5 |
| 3 | 16-132-058 | WHEEL, POLY ON POLY | 2 | 15 | 33622 | SPLIT LOCK WASHER, CARBON STEEL, MEDIUM ZINC FINISH, 3/8" | 5 |
| 4 | 33018 | USS FLAT WASHER, Z PLATED, Ø 3/4" | 4 | 16 | 36106 | HEX NUT, GRADE A, ZINC PLATED, 3/8-16 | 5 |
| 5 | 68015 | EXTERNAL RETAINING RING, PHOSPHATE, 3/4" | 2 | 17 | 21-017-087 | STIFFENER, BAR | 1 |
| 6 | 21-112-003 | PIN, Ø1/2 X 1-15/16 LG RETAINING CLEVIS | 3 | 18 | 21-527-001 | SUB-ASSEMBLY, PULLEY W/BUSHING | 1 |
| 7 | 65107 | COTTER PIN, ZINC FINISH, Ø5/32" X 2" | 3 | 19 | 21-145-014 | SPECIALTY HARDWARE, Ø3/16" AIR CRAFT CABLE | 1 |
| 8 | 21-027-003 | ROLLER, GUIDE ROLLER | 8 | 20 | 21-145-013 | SPECIALTY HARDWARE, THIMBLE | 1 |
| 9 | 21-112-002 | PIN, ROLLER | 4 | 21 | 13-025-004-002 | HANDLE, WITH HOLES | 1 |
| 10 | 16-132-009 | PP-4/1.25-W | 2 | 22 | 31802 | SCREW, SELF-TAPPING SCREW | 2 |
| 11 | 11113 | HEX BOLT, GRADE A, PLAIN FINISH, 3/8"-16 X 2-1/2" | 2 | 23 | 21-527-002 | SUB-ASSEMBLY, ROLLER W/ BUSHING | 2 |
| 12 | 37024 | NYLON INSERT LOCK NUT, GRADE 2, ZINC FINISH, 3/8"-16 | 2 | 24 | 99-145-067 | COMPRESSION SLEEVE Ø3/16" X 1" LG | 1 |

**ALLPW-500-FWFL
EXPLODED VIEW & BILL OF MATERIALS
42-006-030**



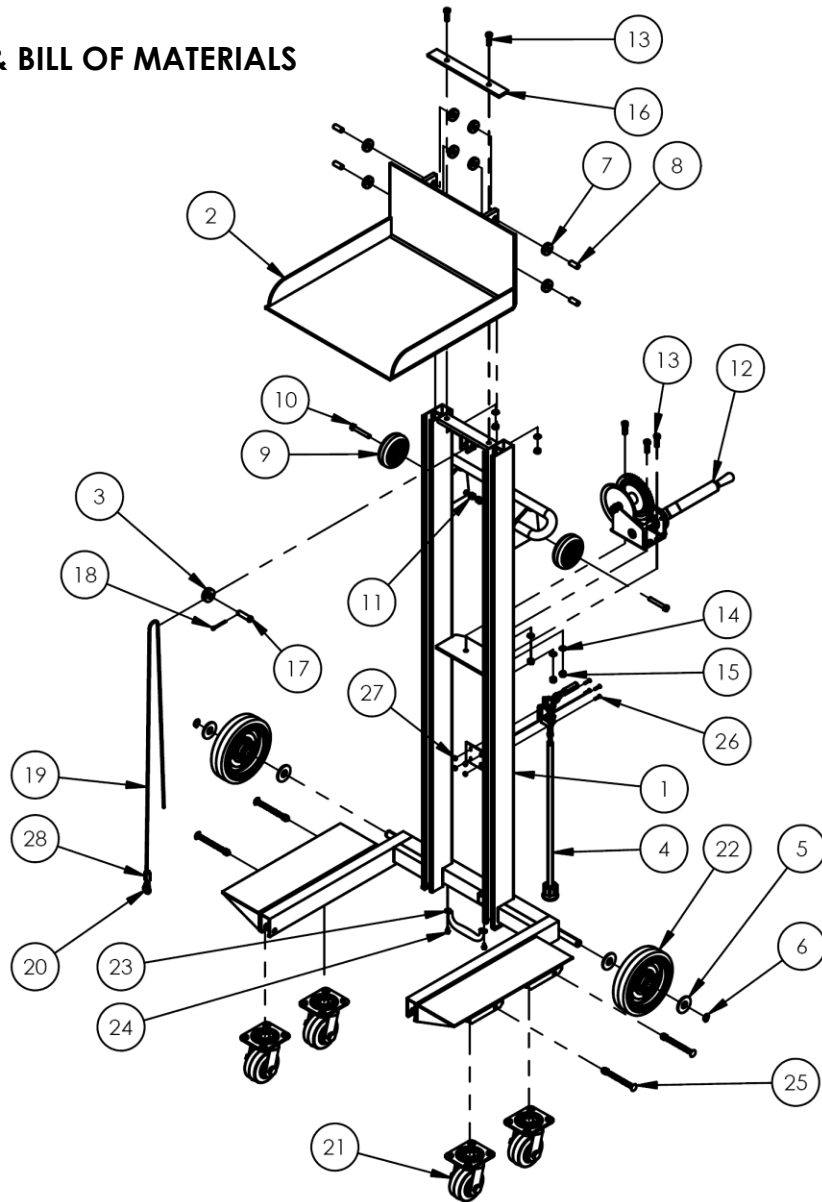
| Item | Part no. | Description | Qty. | Item | Part no. | Description | Qty. |
|------|----------------|--|------|------|----------------|---|------|
| 1 | 42-514-036 | WELDMENT, FRAME | 1 | 15 | 33622 | SPLIT LOCK WASHER, CARBON STEEL, MEDIUM ZINC FINISH, 3/8" | 5 |
| 2 | 21-513-038 | WELDMENT, DECK | 1 | 16 | 36106 | HEX NUT, GRADE A, ZINC PLATED, 3/8-16 | 5 |
| 3 | 16-132-058 | WHEEL, POLY ON POLY | 2 | 17 | 21-017-087 | STIFFENER, BAR | 1 |
| 4 | 33018 | USS FLAT WASHER, Z PLATED, Ø 3/4" | 4 | 18 | 21-527-001 | SUB-ASSEMBLY, PULLEY W/BUSHING | 1 |
| 5 | 68015 | EXTERNAL RETAINING RING, PHOSPHATE, 3/4" | 2 | 19 | 21-145-014 | SPECIALTY HARDWARE, Ø3/16" AIR CRAFT CABLE | 1 |
| 6 | 21-112-003 | PIN, Ø1/2 X 1-15/16 LG RETAINING CLEVIS | 3 | 20 | 21-145-013 | SPECIALTY HARDWARE, THIMBLE | 1 |
| 7 | 65107 | COTTER PIN, ZINC FINISH, Ø5/32" X 2" | 3 | 21 | 13-025-004-002 | HANDLE, WITH HOLES | 1 |
| 8 | 21-027-003 | ROLLER, GUIDE ROLLER | 8 | 22 | 31802 | SCREW, SELF-TAPPING SCREW | 2 |
| 9 | 21-112-002 | PIN, ROLLER | 4 | 23 | 21-527-002 | SUB-ASSEMBLY, ROLLER W/ BUSHING | 2 |
| 10 | 16-132-009 | PP-4/1.25-W | 2 | 24 | 99-145-067 | COMPRESSION SLEEVE Ø3/16" X 1" LG | 1 |
| 11 | 11113 | HEX BOLT, GRADE A, PLAIN FINISH, 3/8"-16 X 2-1/2" | 2 | 25 | 21-001-132 | FINAL ASSEMBLY W/O SHIPPING | 1 |
| 12 | 37024 | NYLON INSERT LOCK NUT, GRADE 2, ZINC FINISH, 3/8"-16 | 2 | 26 | 27560 | #10-32 x 3/4 LG SLOTTED MACHINE SCREW | 4 |
| 13 | 21-042-002-001 | HAND WINCH, ONE PIECE STRAIGHT HANDLE GRIP | 1 | 27 | 37015 | 10-32 NYLOCK NUT Z-PLATED | 4 |
| 14 | 11107 | HEX BOLT, GRADE A, ZINC FINISH, 3/8"-16 x 1-1/4" | 5 | | | | |

LLPW-500-4SFL
Exploded View & Bill of Materials
42-006-001



| Item | Part no. | Description | Qty. | Item | Part no. | Description | Qty. |
|------|------------|--|------|------|----------------|---|------|
| 1 | 42-514-006 | WELDMENT, FRAME | 1 | 13.4 | 40307 | HEX NUT, CLASS 8, ZINC PLATED, M8-1.25 | 1 |
| 2 | 33-513-093 | WELDMENT, DECK | 1 | 14 | 21-017-155 | BAR, RETAINER | 1 |
| 3 | 33018 | USS FLAT WASHER, Z PLATED, Ø 3/4" | 4 | 15 | 33622 | SPLIT LOCK WASHER, CARBON STEEL, MEDIUM ZINC FINISH, 3/8" | 5 |
| 4 | 68015 | EXTERNAL RETAINING RING,PHOSPHATE, 3/4" | 2 | 16 | 11107 | HEX BOLT, GRADE A, ZINC FINISH, 3/8"-16 x 1-1/4" | 5 |
| 5 | 21-027-003 | ROLLER, GUIDE | 8 | 17 | 36106 | HEX NUT, GRADE A, ZINC PLATED, 3/8-16 | 5 |
| 6 | 21-112-002 | PIN. ROLLER | 4 | 18 | 27560 | #10-32 x 3/4 LG SLOTTED MACHINE SCREW | 4 |
| 7 | 16-132-009 | PP-4/1.25-W | 2 | 19 | 33074 | SAE FLAT WASHER, Z-PLATED, 3/16" (#10) | 4 |
| 8 | 11113 | HEX BOLT, GRADE A, PLAIN FINISH, 3/8"-16 X 2-1/2" | 2 | 20 | 33614 | LOCK WASHER, Z-PLATED, #10 | 4 |
| 9 | 37024 | NYLON INSERT LOCK NUT, GRADE 2, ZINC FINISH, 3/8"-16 | 2 | 21 | 36030 | 10-32 HEX NUT | 4 |
| 10 | 16-132-011 | CASTER SWIVEL, 4X2 | 4 | 22 | 21-042-002-001 | HAND WINCH, ONE PIECE STRAIGHT HANDLE GRIP | 1 |
| 11 | 16-132-200 | CASTER, PP-8/2-W, RED | 2 | 23 | 21-112-003 | PIN, Ø1/2 X 1-15/16 LG RETAINING CLEVIS | 1 |
| 12 | 99-612-001 | PIN, BULLDOG BOLT AND NUT ASSEMBLY | 4 | 24 | 21-145-013 | SPECIALTY HARDWARE, THIMBLE | 1 |
| 13 | 21-001-132 | FINAL ASSEMBLY W/O SHIPPING | 1 | 25 | 21-527-001 | SUB-ASSEMBLY, PULLEY W/BUSHING | 1 |
| 13.1 | 21-145-001 | SPECIALTY HARDWARE, PUSH-PULL CLAMP | 1 | 26 | 21-145-014 | SPECIALTY HARDWARE, Ø3/16" AIR CRAFT CABLE | 1 |
| 13.2 | 21-537-006 | WELDMENT, FLOOR LOCK | 1 | 27 | 65107 | COTTER PIN, ZINC FINISH, Ø5/32" X 2" | 1 |
| 13.3 | 14-037-005 | RUBBER STOP CRUTCH TIP | 1 | 28 | 99-145-067 | COMPRESSION SLEEVE Ø3/16" X 1" LG | 1 |

ALLPW-500-4SFL
EXPLODED VIEW & BILL OF MATERIALS
21-006-061

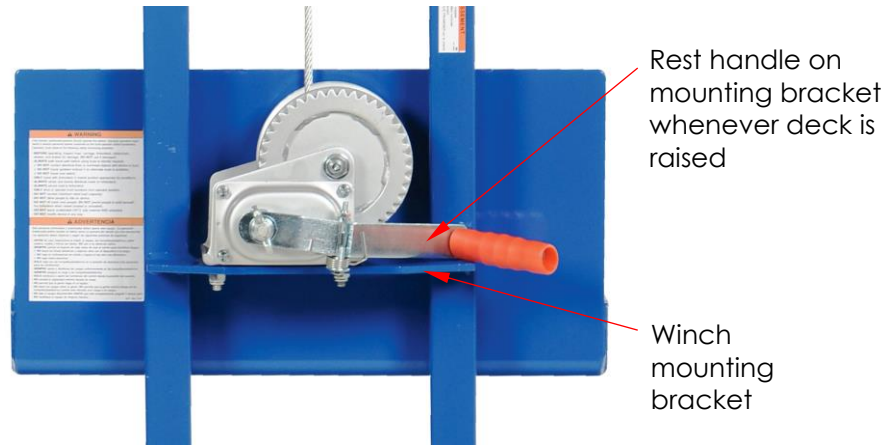


| Item | Part no. | Description | Qty. | Item | Part no. | Description | Qty. |
|------|----------------|---|------|------|----------------|--|------|
| 1 | 21-513-038 | WELDMENT, DECK | 1 | 15 | 36106 | HEX NUT, GRADE A, ZINC PLATED, 3/8-16 | 5 |
| 2 | 21-527-001 | SUB-ASSEMBLY, PULLEY W/BUSHING | 1 | 16 | 21-017-087 | STIFFENER, BAR | 1 |
| 3 | 21-001-132 | FINAL ASSEMBLY W/O SHIPPING | 1 | 17 | 21-112-003 | PIN, Ø1/2 X 1-15/16 LG RETAINING CLEVIS | 1 |
| 4 | 33018 | USS FLAT WASHER, Z PLATED, Ø 3/4" | 4 | 18 | 65107 | COTTER PIN, ZINC FINISH, Ø5/32" X 2" | 1 |
| 5 | 68015 | EXTERNAL RETAINING RING, PHOSPHATE, 3/4" | 2 | 19 | 21-145-014 | SPECIALTY HARDWARE, Ø3/16" AIR CRAFT CABLE | 1 |
| 6 | 21-027-003 | ROLLER, GUIDE ROLLER | 8 | 20 | 21-145-013 | SPECIALTY HARDWARE, THIMBLE | 1 |
| 7 | 21-112-002 | PIN, ROLLER | 4 | 21 | 16-132-011 | CASTER SWIVEL, 4X2 | 4 |
| 8 | 16-132-009 | PP-4/1.25-W | 2 | 22 | 16-132-200 | CASTER, PP-8/2-W, RED | 2 |
| 9 | 11113 | HEX BOLT, GRADE A, PLAIN FINISH, 3/8"-16 X 2-1/2" | 2 | 23 | 13-025-004-002 | HANDLE, WITH HOLES | 1 |
| 10 | 37024 | NYLON INSERT LOCK NUT, GRADE 2, ZINC FINISH, 3/8"-16 | 2 | 24 | 31802 | SCREW, SELF-TAPPING SCREW | 2 |
| 11 | 21-042-002-001 | HAND WINCH, ONE PIECE STRAIGHT HANDLE GRIP | 1 | 25 | 99-612-001 | PIN, BULLDOG BOLT AND NUT ASSEMBLY | 4 |
| 12 | 11107 | HEX BOLT, GRADE A, ZINC FINISH, 3/8"-16 X 1-1/4" | 5 | 26 | 27560 | #10-32 x 3/4 LG SLOTTED MACHINE SCREW | 4 |
| 13 | 33622 | SPLIT LOCK WASHER, CARBON STEEL, MEDIUM ZINC FINISH, 3/8" | 5 | 27 | 37015 | 10-32 NYLOCK NUT Z-PLATED | 4 |
| 14 | 21-513-038 | WELDMENT, DECK | 1 | 28 | 99-145-067 | COMPRESSION SLEEVE Ø3/16" X 1" LG | 1 |

RAISING AND LOWERING THE DECK

To raise and lower the deck, the lifter is equipped with a manual winch.

Winch: To raise the platform, rotate the handle clockwise. The platform rises ~1 inch with each rotation. To lower the platform, rotate the handle counterclockwise. Lay the handle on the winch mounting bracket as shown when the deck is elevated.



USING THE HAND TRUCK

This product is a “manually-propelled high lift industrial truck” according to the national standard ANSI/ITSDF B56.10-2012 (“B56.10”). Acquire a copy of B56.10, which is available at no cost through the ITSDf website (www.itsdf.org), and review the operation recommendations. Instructions in this manual are meant to **supplement** those recommendations.

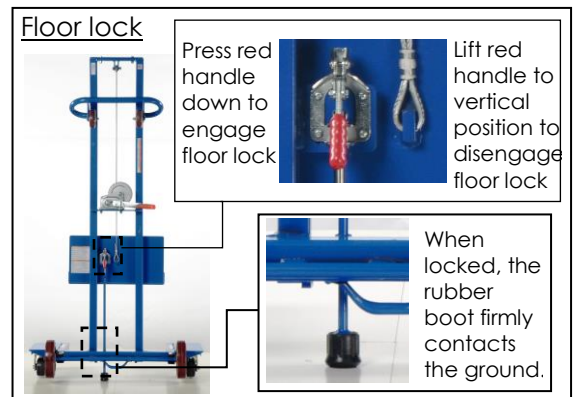
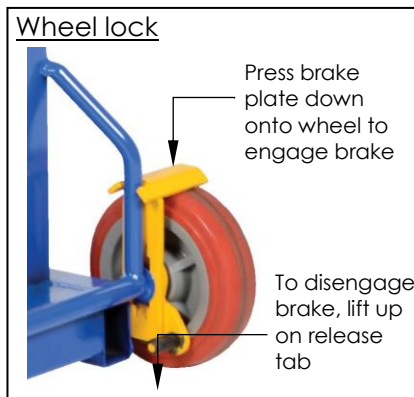
ONLY use this device after completing the training program outlined in B56.10, sections 4.17 and 4.18.1-.4.

- Develop safe working habits and an awareness of hazardous conditions occurring or present during operation of the lifter.
- Inspect the area where the lifter will be used **before each use** to identify unusual operating conditions. Implement additional safety precautions as conditions require. Conditions might include:
 1. Irregularities in the floor/surface;
 2. Debris or other obstructions on the floor/surface;
 3. Unsound surfaces, i.e. surfaces that cannot support your weight plus the weight of the lifter and a full capacity load.
- Perform the following **function test before each use**:
 1. Raise and lower the deck and confirm normal operating condition of the lift mechanisms.
 2. Test the casters/wheels: wheels should roll smoothly, should not be severely worn, and should be rigidly fastened to the frame of the lifter.

Inspect the lifter as recommended in the **INSPECTIONS & MAINTENANCE** section of this manual on [page 20](#). Use the lifter only if it is in normal operating condition.

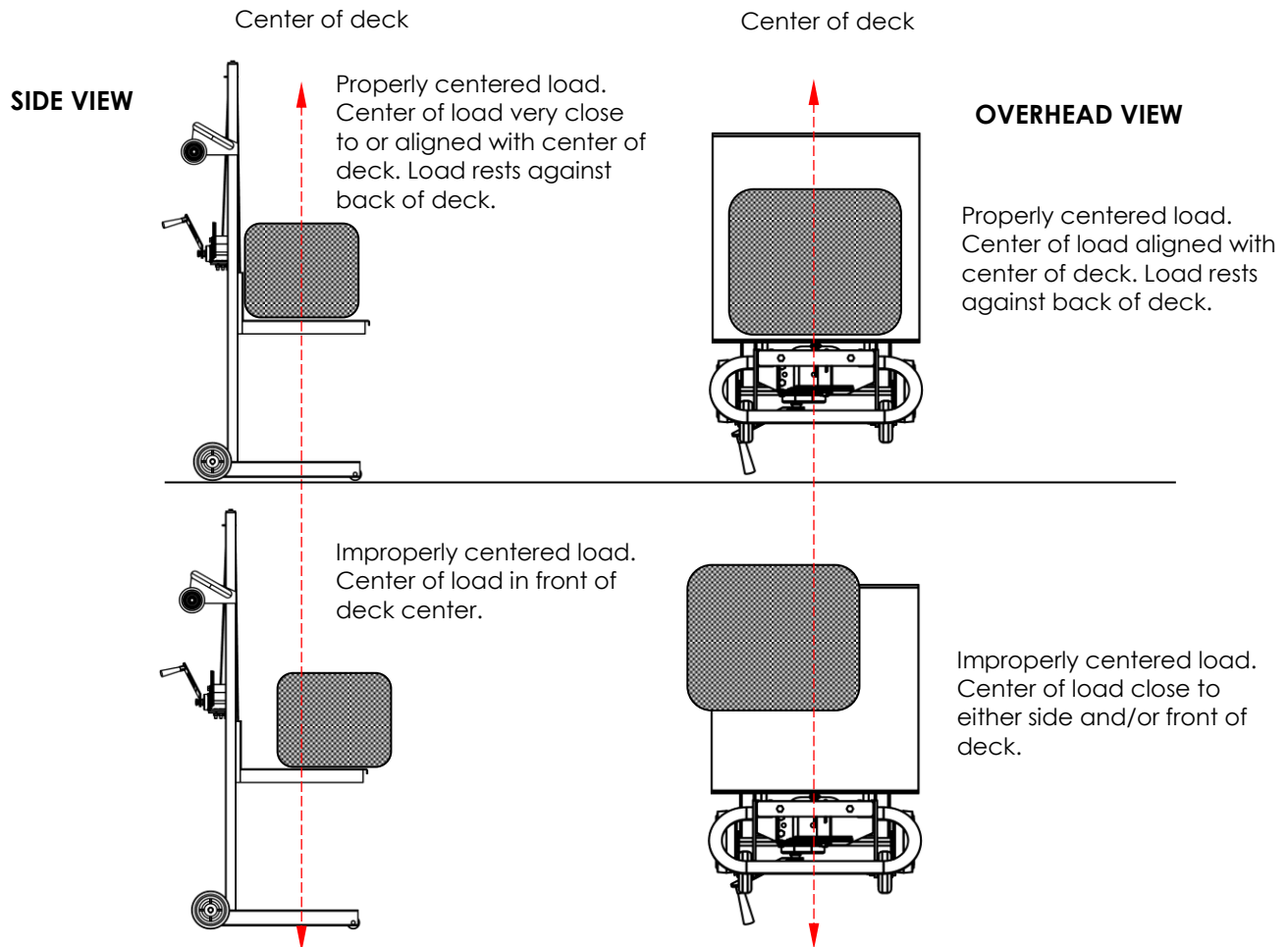
Step 1: Grasp the handle with both hands. Walk behind the lifter and keep your feet away from the wheels.

Step 2: Move the lifter to a position near the load. If the lifter is equipped with either a floor lock engage the device to prevent the lifter from moving.



Step 3: Raise the deck to bring it to the level of the load. Turn the handle clockwise to elevate the deck. Turn the handle counterclockwise to lower the deck.

Step 4: Center the load on the deck. Secure it to the deck (with ratchet straps, for example) if necessary to prevent the load from sliding, rolling, etc.



Step 5: Lower the deck until it is just a few inches above the ground. Move the load to the desired location. After you arrive at the unloading destination:

- Lock the castors or set the brakes;
- Turn the handle clockwise until the load is positioned at a comfortable height;
- Rest the handle on the winch mounting bracket; and
- Remove the load.

Step 6: Lower the deck until it is a few inches above the legs and return the lifter to its storage location. Engage the brakes (if equipped with optional brakes) and lower the deck completely. Store the lifter in a dry, indoor location.

RECORD OF SATISFACTORY CONDITION (THE "RECORD")

Record the condition of the hand truck before putting it into service. Thoroughly photograph the unit from multiple angles so that all operating mechanisms are clearly visible. Take close range photographs of the labeling applied to the truck. Raise and lower the deck. Describe the operation of the winch. Describe sounds heard as the deck rises and descends. How much effort is required to turn the winch? Apply the brake and/or floor lock (if equipped). Photograph the brake and/or lock. Try to move the truck with the brake applied and describe how the brake resists movement. Collect all photographs and writings in a single file. Give the file a name that clearly identifies it. This file is a record of the unit in satisfactory condition. Compare the findings of all inspections to the record to determine whether the truck is in satisfactory condition. Purely cosmetic changes, like damaged paint/powder coat are not changes from satisfactory condition. However, touch-up paint to be applied to all affected areas as soon as damage occurs.

INSPECTIONS & MAINTENANCE

Regular inspections and maintenance are necessary to keep the device in normal condition. Compare the results of each inspection to the [RECORD](#) to determine whether the unit is satisfactory condition or requires repairs or replacement parts. If you are uncertain whether a part requires repair or replacement, contact [TECHNICAL SERVICE](#) for assistance.

- Periodically lubricate moving parts.
- Keep the product clean and dry.
- Only use manufacturer- approved replacement parts.

At least once every 2 weeks, inspect the following components:

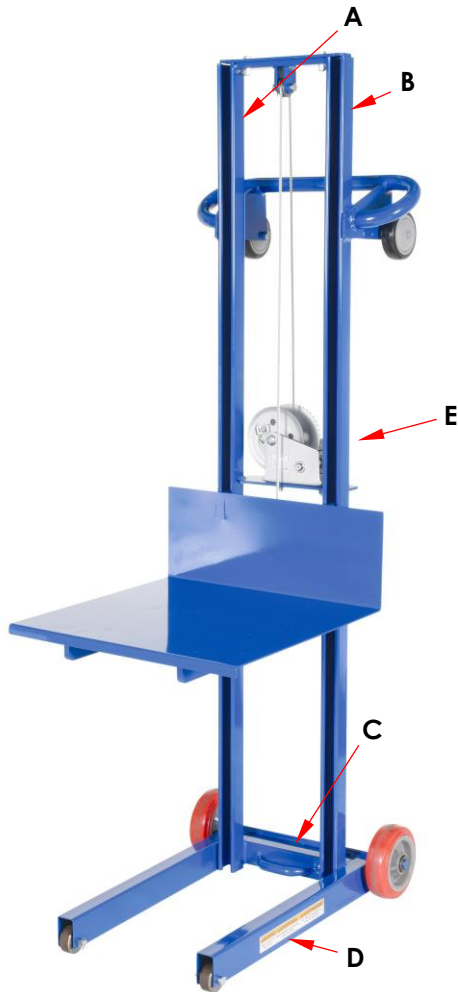
1. Winch, winch mounting bracket (see [RAISING AND LOWERING THE DECK](#) on p. 18), cable, and pulley: Cycle the deck up and down. Listen for unusual noises and watch for binding or rough movement as the deck moves. Examine the winch. Make sure that the spool is intact and rotates smoothly when the handle is turned. Inspect the mounting bracket. The winch should be solidly attached to the bracket. Tighten all loose fasteners. Lower the deck and examine the cable for reeving, stretching, thinning portions, etc. Confirm that the pulley rotates freely and is securely fastened to the mast.
2. Frame (mast, base, deck, and deck rollers): examine the frame members for damaged welds, severe rusting, cracks, bends, etc. Remove rust with steel wool. Clean the affected areas and apply touch-up paint.
3. Casters and wheels: check each caster and wheel for wobbling, damage, and severe wear. Wheels and casters should roll smoothly. Clean the casters to remove grit from the surfaces, if necessary.
4. Hardware: examine the pins, bolts, nuts, etc. Tighten loose fasteners.
5. Floor lock: if your unit is equipped with the floor lock option confirm that it makes solid contact with the ground when applied. Check the condition of the rubber pad. Replace the pad if wear or damage affects its function.

Maintenance: Implement a maintenance program to ensure that the lifter functions properly. Page 9 of ANSI/ITSDF standard B56.10-2006, "Manually propelled high lift industrial trucks", describes recommended maintenance procedures. A copy of the standard is downloadable for free from the ITSDF website (see www.itsdf.org). Apply those recommendations in conjunction with the following steps.

1. Tag the lifter, "Out of Service."
2. Inspect the lifter as described above. If deformity, corrosion, rusting, or excessive wear of structural members is present, DO NOT use the lifter. If the deck does not move smoothly or makes noise as it moves up or down the upright, apply a silicon wax or silicon spray to the inside of the mast frame.
3. Remove any dirt or other matter from the cable and pulleys and other lifter surfaces.
4. Perform all other necessary adjustments and/or repairs. DO NOT modify the lifter.
5. Make a dated record of the repairs, adjustments and/or replacements made.
6. Platform, mast and platform rollers: cycle the platform up and down while listening for unusual noises and watching for binding or rough movement.

LABELING DIAGRAM

The unit should be labeled as shown in the diagram. However, label content and location are subject to change so your product might not be labeled exactly as shown. Thoroughly photograph the unit when you first receive it as discussed in the [RECORD OF SATISFACTORY CONDITION](#) section of this manual. Make sure that your Record includes a photograph of each label. Modify this diagram, if necessary, to indicate labeling actually applied. Replace all labels that are, damaged, missing, or not easily readable (e.g. faded). Contact the [TECHNICAL SERVICE & REPLACEMENT PARTS DEPARTMENT](#) online at <https://www.vestil.com/page-parts-request.php> to order replacement labels. You may also call (260) 665-7586 and ask the operator to connect you to the [REPLACEMENT PARTS DEPARTMENT](#).



A: Label 1153 (on back side of mast)

| | |
|---------------------------------|-----------------------|
| MODEL / MODÉLO / MODÈLE | _____ |
| WEIGHT / PESO / MASS | _____ |
| CAPACITY / CAPACIDAD / CAPACITÉ | _____ |
| SERIAL / SERIE / SÉRIE | _____ |
| UNITS: 2.2 lb. = 1kg | 1" (or 1in.) = 2.54cm |
| | 1153 |

B: Label 527 (on back side of mast)

| ⚠ WARNING |
|---|
| <p>Only trained, authorized persons should operate this device. Improper operation might result in serious personal injuries sustained by the truck operator and/or bystanders. Operators must observe the following safety-enhancing practices:</p> <ul style="list-style-type: none"> • BEFORE operating, inspect mast, carriage, forks/deck, cable/chain, wheels, and brakes for damage. DO NOT use if damaged. • ALWAYS walk travel path before using truck to identify hazards: <ul style="list-style-type: none"> 3 DO NOT contact electrical lines or overhead objects with device or load; 3 DO NOT travel up/down inclines if an alternate route is available; 3 DO NOT travel over debris. • ONLY travel with forks/deck in lowest position appropriate for conditions. • ALWAYS center and evenly distribute loads on forks/deck. • ALWAYS secure load to forks/deck. • ONLY drive or operate truck functions from operator position. • DO NOT exceed maximum rated load (capacity). • DO NOT allow people to ride on device. • DO NOT lift loads over people; DO NOT permit people to walk beneath the forks/deck when raised (loaded or unloaded). • DO NOT leave unattended UNTIL fully lowered AND unloaded. • DO NOT modify device in any way. |
| ⚠ ADVERTENCIA |
| <p>Solo personas entrenadas y autorizadas deben operar este equipo. La operación inadecuada podría resultar en daños serios al operario del camión y/o a los transeúntes. Los operarios deben observar y seguir las siguientes prácticas de seguridad:</p> <ul style="list-style-type: none"> • ANTES de usar, inspeccione el mástil, el equipo, las horquillas/plataforma, cable/cadena, ruedas y frenos por daños. NO use si se observan daños. • SIEMPRE camine el trayecto de viaje antes de usar el camión para identificar riesgos: <ul style="list-style-type: none"> 3 NO toque las líneas eléctricas u objetos altos con el dispositivo o la carga; 3 NO viaje en inclinaciones de subida y bajada si hay otra ruta alternativa; 3 NO viaje sobre desechos. • SOLO viaje con las horquillas/plataforma en la posición de descenso más apropiada para las condiciones. • SIEMPRE centre y distribuya las cargas uniformemente en las horquillas/plataforma • SIEMPRE asegure la carga a las horquillas/plataforma. • SOLO conduzca u opere las funciones del camión desde la posición del operario. • NO exceda la capacidad máxima tasada de carga. • NO permita que la gente viaje en el equipo. • NO eleve las cargas sobre la gente; NO permita que la gente camine debajo de las horquillas/plataforma cuando este elevada (con carga o sin carga). • NO deje el equipo desatendido HASTA que este completamente cargado Y descargado. • NO modifique el equipo de ninguna manera. <p style="text-align: right;"><small>527 - Rev 1109</small></p> |

C: Label 212 (on cross member of models with floor lock and/or caster brake)

| ⚠ WARNING | ⚠ ADVERTENCIA | ⚠ AVERTISSEMENT |
|--|---|--|
| Immobilize by applying all caster brakes and/or floor locks when in use, loading, and unloading. | Inmovilice aplicando todos los frenos de las ruedas y / o bloqueos del piso cuando esté en uso, cargando y descargando. | Immobiliser en appliquant tous les freins des roulettes et / ou les verrous de plancher lors de l'utilisation, du chargement et du déchargement. |
| | | <small>212 Rev 0920</small> |

D: Label 208 (on both legs)

| ⚠ WARNING | ⚠ ADVERTENCIA | ⚠ AVERTISSEMENT |
|---------------------------|---------------------------------------|---|
| KEEP CLEAR OF PINCH POINT | MANTENGASE ALEJADO DEL PUNTO DE CORTE | SE TENIR À DISTANCE DU POINT DE PINCEMENT |
| | | <small>208A</small> |

E: Label 319 (on winch)



LIMITED WARRANTY

Vestil Manufacturing Company ("Vestil") warrants this product to be free of defects in material and workmanship during the warranty period. Our warranty obligation is to provide a replacement for a defective, original part covered by the warranty after we receive a proper request from the Warrantee (you) for warranty service.

Who may request service?

Only a warrantee may request service. You are a warrantee if you purchased the product from Vestil or from an authorized distributor AND Vestil has been fully paid.

Definition of "original part"?

An original part is a part used to make the product as shipped to the Warrantee.

What is a "proper request"?

A request for warranty service is proper if Vestil receives: 1) a photocopy of the [Customer Invoice](#) that displays the shipping date; AND 2) a [written request](#) for warranty service including your name and phone number. Send requests by one of the following methods:

| <u>US Mail</u> | <u>Fax</u> | <u>Email</u> |
|---|--|---|
| Vestil Manufacturing Company 2999 North Wayne Street, PO Box 507 Angola, IN 46703 | (260) 665-1339 <u>Phone</u> (260) 665-7586 | info@vestil.com Enter "Warranty service request" in subject field. |

In the written request, list the parts believed to be defective and include the address where replacements should be delivered. After Vestil receives your request for warranty service, an authorized representative will contact you to determine whether your claim is covered by the warranty. Before providing warranty service, Vestil will require you to send the entire product, or just the defective part (or parts), to its facility in Angola, IN.

What is covered under the warranty?

The warranty covers defects in the following original, dynamic parts: motors, hydraulic pumps, motor controllers, and cylinders. It also covers defects in original parts that wear under normal usage conditions ("wearing parts"), such as bearings, hoses, wheels, seals, brushes, and batteries.

How long is the warranty period?

The warranty period for original dynamic components is 90 days. For wearing parts, the warranty period is 90 days. Both warranty periods begin on the date Vestil ships the product to the Warrantee. If the product was purchased from an authorized distributor, the periods begin when the distributor ships the product. Vestil may, at its sole discretion, extend a warranty period for products shipped from authorized distributors by up to 30 days to account for shipping time.

If a defective part is covered by the warranty, what will Vestil do to correct the problem?

Vestil will provide an appropriate replacement for any covered part. An authorized representative of Vestil will contact you to discuss your claim.

What is not covered by the warranty?

The Warrantee (you) is responsible for paying labor costs and freight costs to return the product to Vestil for warranty service.

Events that automatically void this Limited Warranty.

- Misuse;
- Negligent assembly, installation, operation or repair;
- Installation/use in corrosive environments;
- Inadequate or improper maintenance;
- Damage sustained during shipping;
- Collisions or other accidents that damage the product;
- Unauthorized modifications: Do not modify the product IN ANY WAY without first receiving written authorization from Vestil.

Do any other warranties apply to the product?

Vestil Manufacturing Co. makes no other express warranties. All implied warranties are disclaimed to the extent allowed by law. Any implied warranty not disclaimed is limited in scope to the terms of this Limited Warranty. Vestil makes no warranty or representation that this product complies with any state or local design, performance, or safety code or standard. Noncompliance with any such code or standard is not a defect in material or workmanship.

