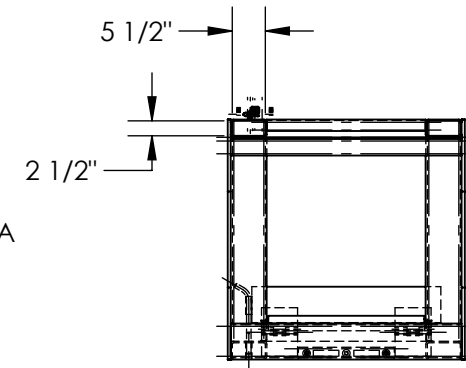
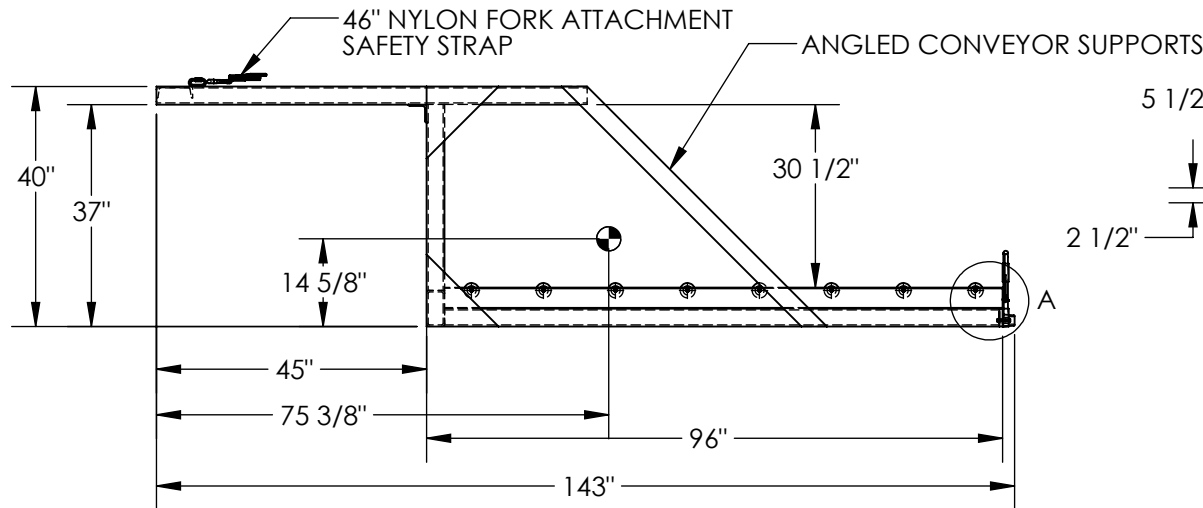
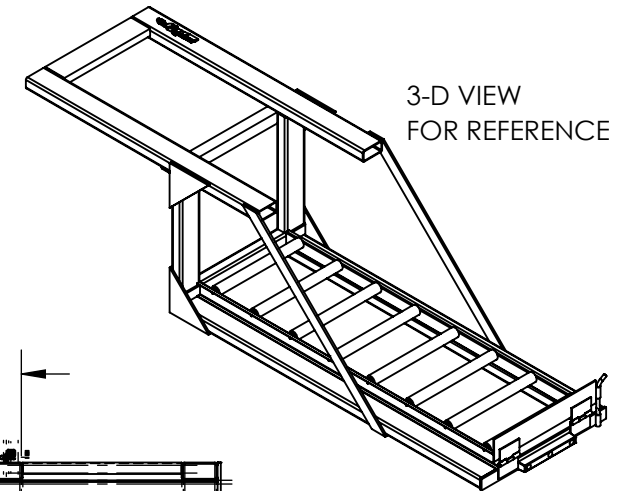
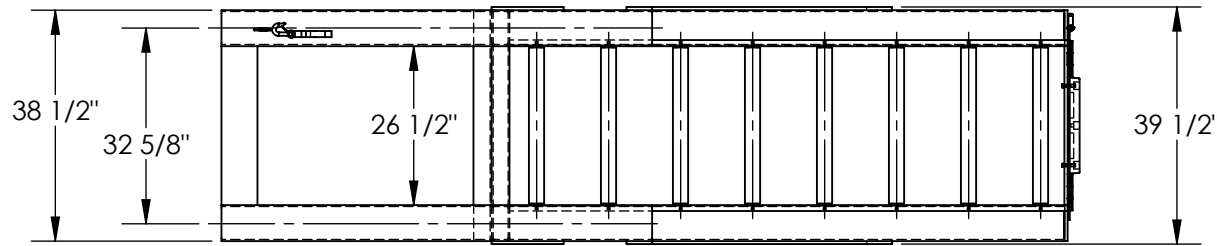


DOCK PRO- BELOW DOCK LOADED - DP-3896-15

APPROX WEIGHT: 989.94 lbs.
 DOES NOT INCLUDE WEIGHT OF POWER OR PACKAGING!!!

*** ANY ADDITIONS, DELETIONS, OR OMISSIONS MUST BE CORRECTED ON THIS DRAWING AS THIS DRAWING WILL BE CONSIDERED ALL INCLUSIVE ***

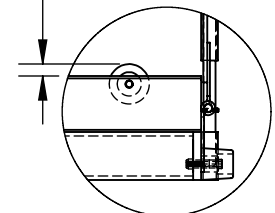
ALL GRAPHICS PROVIDED ARE FOR REFERENCE ONLY. IF CERTAIN DIMENSIONS ARE CRITICAL PLEASE VERIFY THOSE DIMENSIONS WITH YOUR SALESPERSON



STANDARD FEATURES

- MODEL NUMBER IS DP-3896-15
- OVERALL WIDTH IS 39 1/2"
- WIDTH BETWEEN ANGLED SUPPORTS IS 38 1/2"
- WIDTH BETWEEN CONVEYOR FRAMES IS 26 1/2"
- OVERALL LENGTH IS 143"
- USABLE LENGTH IS 96"
- OVERALL HEIGHT IS 40"
- MAX CAPACITY IS 1,500 LBS.
- FORK POCKET DIMENSIONS 5 1/2" X 2 1/2"
- BELOW DOCK SERVICE HEIGHT- 30 1/2"
- FORK POCKET CENTER TO CENTER 32 5/8"
- EFFECTIVE THICKNESS EQUALS LESS THAN ONE INCH

3/4" (CONVEYOR RAIL TO TOP OF ROLLER)



DETAIL A
SCALE 1 : 12

DIMENSION TOLERANCE ± 1/4"

I, THE UNDERSIGNED, AGREE THAT THE PRODUCT AS REPRESENTED SATISFIES DESIGN AND DIMENSION REQUIREMENTS. I ALSO ACKNOWLEDGE MY DUTY TO CONFIRM PRODUCT AND INSTALLATION COMPLIANCE WITH ALL APPLICABLE FEDERAL, STATE AND LOCAL REGULATIONS AND STANDARDS.

ANY MODIFIED UNITS ARE NON-RETURNABLE

[] As drawn [] As marked

Signed: _____ Date: _____

Printed Name: _____

LEAD TIME WILL START UPON RECEIPT OF SIGNED APPROVAL DRAWING

APPROVAL

SPECIAL FEATURES

NONE

NEVER EXCEED LOAD CENTER RATING PER FORK TRUCK MANUFACTURER'S GUIDLINES. DO NOT USE THIS FORK TRUCK ATTACHMENT IF LOAD WILL EXCEED FORK TRUCK MANUFACTURER'S LOAD CENTER RATING.

FOR INTERNAL USE ONLY PROJECT SIGN OFF	
SALES	
ENG.	
FAB.	
POWER	

DISTRIBUTOR'S NAME:		P.O.#
VESTIL MANUFACTURING		X
W.O.#		X
DRAWN BY: FA	DATE: 07/03/2014	SALES: X
REFERENCE: X	SCALE: 1:28	FILE NAME:
QUOTED LEAD TIME: X	QUOTE # X	08-007-257