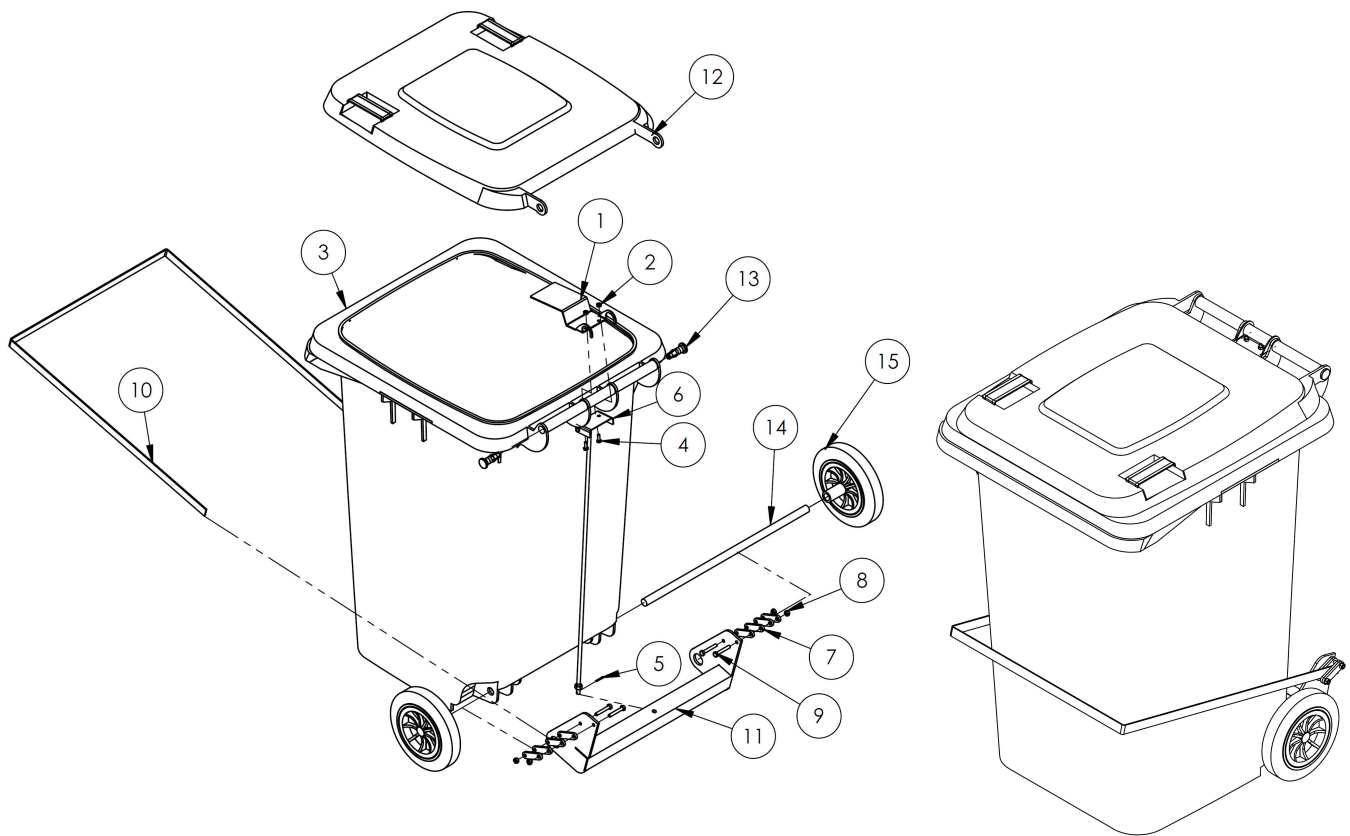




**VESTIL MANUFACTURING CORP.**  
 2999 North Wayne Street, P.O. Box 507, Angola, IN 46703  
 Telephone: (260) 665-7586 -or- Toll Free (800) 348-0868  
 Fax: (260) 665-1339  
[www.vestilmfg.com](http://www.vestilmfg.com)

## Assembly Instructions: TH-95-XX-FL Trash Can With Foot Pedal Lid Lifter

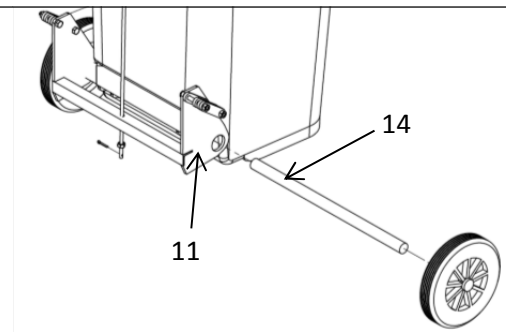


Item No.	Part No.	Description	QTY
1	30-016-026	Bracket, Lid Lifter	1
2	36102	Nut, Hex nut Z plated, ¼ - 20	2
3	30-001-172-A	Final Assembly W/O Shipping	1
4	11003	Bolt, ¼ - 20 UNC x ¾ LG	2
5	65076	1/8" x 1 Cotter Pin, Z-Plated	1
6	30-514-021	Weldment, Back Lifting Bar	1
7	30-113-008	Shim, Foot Pedal	8
8	36104	Hex Nut Z Plated, 5/16 -18	4
9	11061	HHCS #2 Z Plated, 5/16- 18 x 2 LG	4
10	30-014-052	Frame, Foot Lever, Front, Formed	1
11	30-514-033	Weldment, Axle Bracket	1
12	30-001-0172-B	Trash Can Lid	1
13	30-001-172-C	Handle Plug	2
14	30-001-172-E	Rod, Axle	1
15	30-001-172-D	Wheel, 9 ½"	2

NOTE: Numbers in parentheses refer to item numbers in the table on p1.

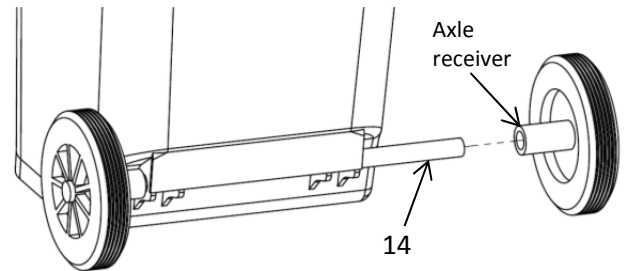
### STEP 1 Attach Weldment (11)

- Align axle holes in weldment with axle channel (refer to exploded diagram on front page) in the base of the trash bin
- Insert axle through weldment holes and axle channel



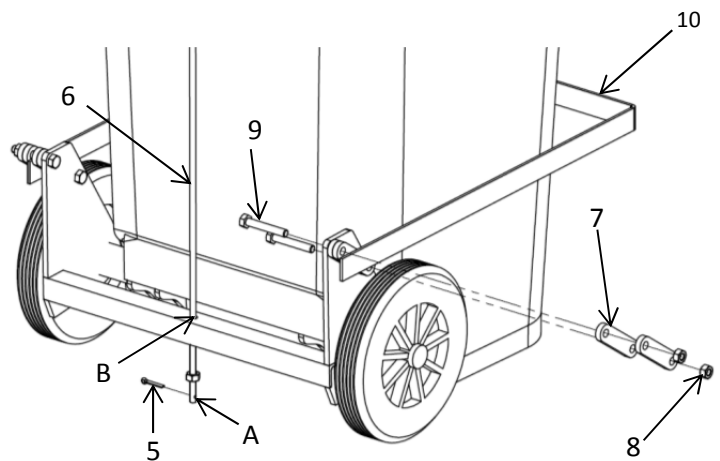
### STEP 2 Attach wheels to ends of the axle

- Press wheels onto the ends of the axle until they latch onto the axle. (Pins inside the axle receiver of each wheel hold onto grooves milled into the axle.)



### STEP 3: Attach foot lever (10) to axle bracket weldment

- Fasten foot pedal shims (7) to the weldment using nuts (8) & bolts (9) as shown in the diagram to the right. Do not tighten these connections yet.
- Insert foot lever (10) around trash bin, then insert the ends of the pedal under the shims & between the bolts.



### STEP 4: Connect lid lifting weldment (6) to axle bracket weldment

- Insert end "A" through hole "B" in the center of the bracket weldment
- Secure the connection with a cotter pin (5) through the end of the lifting weldment

### STEP 5: Connect lid lifter bracket (1)

- Connect lid lifter bracket (1) to lid lifting bar (6) with ¼ bolt (4) & hex nut (2)

### STEP 6: Attach lid

- Place lid over top of bracket (1).
- Align handle brackets with handle & insert the handle plugs (13).

