

VHC-15


VARIABLE HEAT CONTROLLER

for

QUARTZ TUBE (CONSTANT-RESISTANCE) HEAT SOURCES



For quartz lamp (tungsten) heat sources refer to Fostoria model **VHC-32** p/n 04853502

	⚠ WARNING
	<p style="text-align: center; color: blue; font-weight: bold;">IMPORTANT SAFETY INFORMATION INSIDE</p> <ul style="list-style-type: none"> • Serious injury or death possible • Read, understand, and follow all safety information and instructions in this manual before using or servicing this product.



If you have questions about the product you have purchased or would like to leave us feedback, please contact us via our website www.fostoriaindustries.com or by calling 1-800-495-4525.

REFER TO COMPLETE
INDEX OF
INFORMATION ON
PAGE 2





INDEX

Index	Page 2
Safety Signal Word Definitions	Page 2
General Description & Use	Page 3
Specifications	Page 3
Wiring	Page 4
Limited Warranty	Page 4



ATTENTION:

The table to the right provides definitions of the signal words that can be found throughout this manual. These signal words are used to express the severity of the hazard at hand. The signal words are generally used in conjunction with safety symbols that correspond to the text for that particular hazard. As you read this manual, refer back to this table when you are unsure of the signal word definition.

SIGNAL WORD DEFINITIONS	
	DANGER indicates an imminently hazardous situation which, if not avoided, will result in death or serious injury.
	WARNING indicates a potentially hazardous situation which, if not avoided, could result in death or serious injury.
	CAUTION indicates a potentially hazardous situation which, if not avoided, may result in minor or moderate injury.
	CAUTION used without the safety alert symbol indicates a potentially hazardous situation which, if not avoided, may result in property damage.
<small>As defined in ANSI Z535.4-2002</small>	

GENERAL DESCRIPTION & USE

⚠ WARNING





**ELECTRICAL SHOCK HAZARD
FIRE HAZARD**

- Serious injury or death may occur.**
- Not for indoor residential use.**
- Do not use in locations containing hazardous or explosive atmospheres.**
- Do not use outdoors in wet conditions and in unprotected locations.**

The Fostoria VHC-15 Variable Heat Controller is a solid-state power control designed to provide a convenient way to adjust heat output on electric infrared heating elements. The faceplate includes the heat intensity control knob.

Use the VHC-15 to control heaters on patios, in shelter houses or other protected outdoor environments.

One (1) VHC-15 is designed to operate one (1) quartz tube heater.

The VHC-15 can be used with any of the following Fostoria heaters:

MODEL	WATTS
OCH-46-120V (-SS)	1500
OCH-46-208V (-SS)	2000
OCH-46-240V (-SS)	2000
OCH-57-208V (-SS)	3000
OCH-57-240V (-SS)	3000
CH-46-C	1500
CH-57-C	3000

Note: Faceplate may become warm to the touch during use; this is normal.




SPECIFICATIONS

- 120/208/240 V A.C. single-phase “In-Line” controller
- Built-in On/Off switch with surface plate included
- Designed for 2”x 4” electrical wall box mounting (not supplied)
- Will operate: One (1) quartz tube (rated under 15Amps).

CAUTION

The initial current inrush of a quartz lamp (tungsten type heat source) is very high; as much as 10 – 15 times the steady-state current. Operating any quartz lamp with this product will damage the control.

⚠ WARNING

ELECTRICAL SHOCK HAZARD

- Serious injury or death may occur.**
- Disconnect from electrical supply before installing or servicing this product.**
- Read, understand, and follow all wiring and installation instructions below.**

WIRING

⚠ WARNING

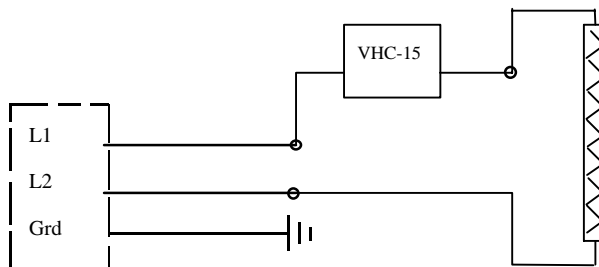
ELECTRICAL SHOCK HAZARD



- Serious injury or death may occur.
- Disconnect from electrical supply before installing or servicing this product.
- Make certain the power source conforms to specifications on heater label.
- Always securely connect green wire from heater to bonding (ground) wire from electrical supply, not to a live or “hot” conductor.
- Use 12 AWG, 90° C rated copper wire only. Maximum 50 ft. run.
- Follow state, local and national electric codes (NEC).

For field wiring, refer to the Installation manual included with your heater and wire the VHC-15 in-line with the ungrounded, hot leg of the power supply (see diagram below) with wire nuts.

All wiring must be performed by a licensed electrician.



LIMITED WARRANTY

FOSTORIA INDUSTRIES, INC. – 1200 N. Main St., Fostoria, Ohio 44830 - (419) 435-9201

The warranty herein set forth is in lieu of all other warranties expressed or implied.

Fostoria Industries, Inc. of Fostoria, Ohio 44830, warrants its products to the owner against defects in material and workmanship for a twelve (12) month period under normal use and service following date of manufacture or installation when proof of such is provided to seller.

This Warranty requires that the owner, or his agent, install the equipment in accordance with the National Electrical Code, any other applicable heating or electrical codes and the manufacturer's installation instructions. It further requires that he perform reasonable and necessary maintenance on the unit. The company is not liable for abuse or misuse of product as may be finally determined by the company.

The obligation of Fostoria Industries, Inc. under the terms of this warranty, shall be to supply a new part, repair of defective part, or a refund, at the company's option with no cost to owner for the new or repaired part. Such parts are to be returned to the factory, or such other location as the company may designate. This warranty does not obligate Fostoria Industries, Inc. to bear the cost of labor in replacing any assembly, unit or component part thereof, nor does the company assume any liability for secondary charges, expenses for installing or removal, or any other consequential losses. The company's maximum liability shall not in any case exceed the list price for the product claimed to be defective.

The warranty shall not apply to any product or parts of products which have been repaired or altered outside of Seller's factory in any manner. Warranty is void on products that have been determined to have been subjected to misuse, negligence or accident or which have been used in a manner contrary to Seller's instructions.