



**GLOBAL
INDUSTRIAL**

We can supply that.®

User's manual

Manual del usuario

Manuel de l'utilisateur

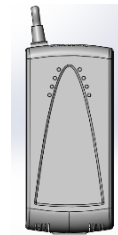
Customer Service
US: 1-800-645-2986

Servicio de atención al Cliente
US: 1-800-645-2986

Service à la clientèle
Canada: 888-645-2986

Instruction Manual

ELECTRIC HIGH LIFT TRUCK



Note: Owner/Operator must read and understand this instruction manual before using the electric high lift truck.

RevC: 4/27/2021

Specifications

Model	JE5210B	JE6810B	JE5215B	JE6815B
Rated Capacity (kg)	1000		1500	
Max Height Capacity (kg)	???		1000	
Max. Lifting Height (mm)	800			
Min. Fork Height (mm)	85			
Fork Length (mm)	1140		1100	
Fork Overall Width (mm)	520	680	520	680
Dia. of Front Wheel (mm)	$\Phi 75 \times 50$			
Dia. of Rear Wheel (mm)	$\Phi 150 \times 40$			
Motor Working Voltage	12V			
Battery	60Ah/12V			
Charger	6A/12V			
Net Weight (kg)	134	138	145	150

Assembly and Adjustment

1. Carefully remove pallet truck from packaging.
2. Insert handle (102) into pump housing (160); lock it with pin (108) and two screws (109). Swing the handle up and down to see if it moves freely. Finally put on spring (105).
3. Open the electrical control case by removing the cover (255). Insert switch wire and plug (184) hanging down from handle (102) into socket (221) in the case. Insert one fuse of 5 Amp (277) into two sockets of F₂.
4. Check the electrical device and elements in the case to see if they are loose, drop down or break.
5. Check oil pipes in the hydraulic system to see if they are screwed tightly.
Remove oil cap (217) to see if oil level is sufficient (at least ¾ full)

6. Fully raise and lower the fork using the Up-Down switch (197) to check that electrical and hydraulic systems are working properly. Repeat 3 to 4 times to make absolutely sure that all systems are in order and to remove possible air bubbles in hydraulic fluid.
 8. Close the case with cover (255) and screw it tightly with screw (256).
-

Operation

1. JE series are designed for working on flat, level ground.
2. Handle (102) is used for pulling and steering.
3. When the fork is lifted to its highest position, JE series should not be moved.
4. Up-button moves the fork up, Down-button moves the fork down. The fork can stop at any position and won't slide down.
5. A safety valve is built into the hydraulic system to prevent overloading. When lifting a load over 1000 kg, the piston rod (406) cannot extend and lift the load. The outer hydraulic cylinder (413) can fully extend and lift loads up to the model's full rated capacity.

NOTE: This means loads over 1000 kg cannot be lifted to maximum height.

6. Cease operation when the battery indicator is at or below the red line. Operating the JE series in this state can cause premature wear and damage to battery (254). Plug recharger (271) into a compatible power socket, then connect the recharger to the electrical control case Socket (225). The battery will begin to recharge. For **detailed specifications please refer to the nameplate on the recharger.**

Battery Use & Maintenance Instructions

The battery is an easily-worn part, and the function could be weakened by various factors. Proper operation and maintenance are key to a prolonged service life.

1. Status of storage battery

1.1 Battery is fully charged at or slightly above 12.5 volts.

1.2 If battery is between 11.5-12.5V, battery is not fully charged and needs charging;

1.3 If battery is below 11.5V, open the electric box cover (255), and check the indicator of the state of charge on the battery cover. If the indicator is black, please check the charger and power supply, if both are working, continue recharging; if indicator is white, replace the battery.

2. When JE series is lifting with maximum rated load, the continuous working time of the motor should not exceed 40 seconds, and there should be a time interval of 3-5 minutes before lifting the next load.

3. Charging instructions

Recharge when voltmeter is red.

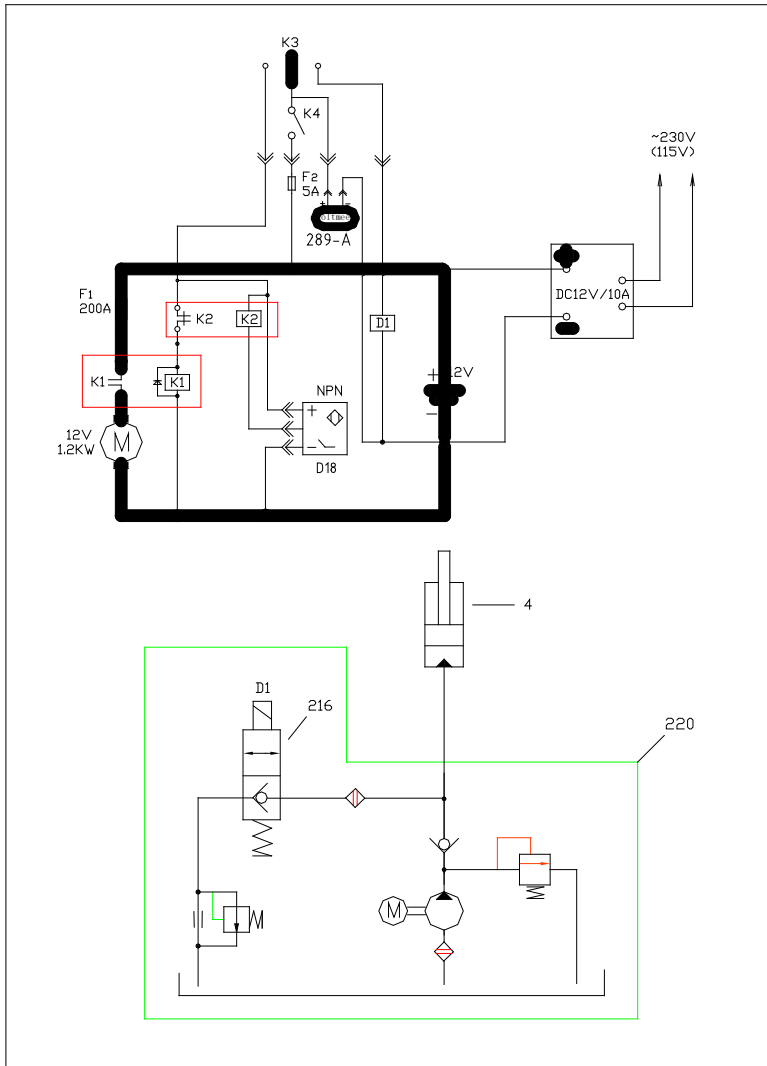
Precautions

1. Read the manual carefully before operation. Finish every procedure as required in the manual.
2. Lifting the fork to its full range 1 to 2 times before use to release the air in the hydraulic system.
3. JE series is not designed to lift any person or individual. The JE series is also not designed to work on sloped or inclined surfaces.
4. Do not place hands or feet under fork or on piston rod (406) and mid-cylinder (413).
5. Place the load on the center of the fork. Eccentric loading is strictly prohibited.
6. The safety valve in the pump station will be automatically open when it is overloaded. Under such circumstance, DO NOT push the up-button, or the station may be damaged.
7. To replace or fill hydraulic oil, the forks should be lowered to the lowest position. Make sure the new oil is clean. The oil condensation point should be $\leq -20^{\circ}\text{C}$. The motion viscosity should be 20-30 cst (centistokes).

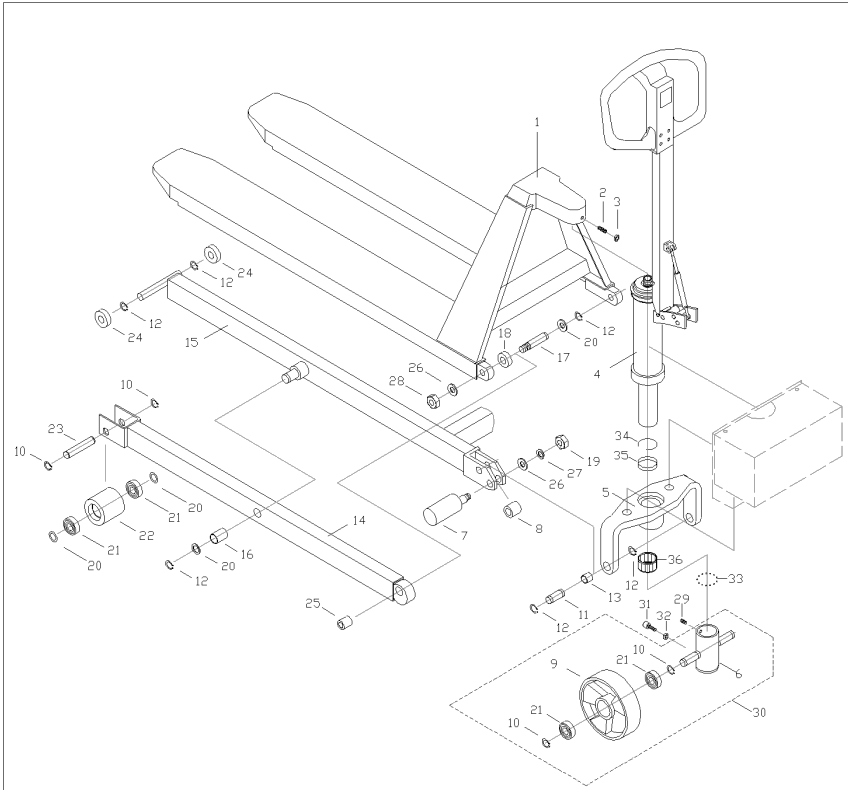
Common Problems and Maintenance

No.	Symptom	Cause	Remedy
1	Fork does not lift up when pushing up-button	1. Switch is out of order 2. Fuse is broken 3. Magnetic switch is out of order 4. Hydraulic oil depleted	1. Check switch (197) (417-A) 2. Replace fuse (277) 3. Check magnetic switch (215) 4. Refill hydraulic oil
2	Fork does not descend when pushing down-button	1. Switch is out of order 2. Fuse is broken 3. Magnetic switch is out of order 4. Object blocking	1. Check switch (197) (417-A) 2. Replace fuse (277) 3. Check magnetic switch (224) 4. Check and remove the object
3	Fork does not lift to highest position	1. Hydraulic oil depleted	1. Refill hydraulic oil
4	Motor does not work	1. Motor broken 2. Terminals and inserters are loose 3. Battery voltage low	1. Check motor brush 2. Check terminals and inserters 3. Recharge battery
5	Battery not recharging	1. Battery needs more time to recharge 2. Battery is out of order	1. Recharge for a longer time 2. Replace battery
6	Oil leakage from Piston Rod & Mid-cylinder	1. Oil seals broken	1. Replace oil seals
7	Unsteady in highest position	1. The ground is not level 2. Centrifugal axle is off the ground	1. Work on level ground 2. Adjust centrifugal axle (7) to touch the ground

HYDRAULIC CIRCUIT / ELECTRIC WIRING DIAGRAM



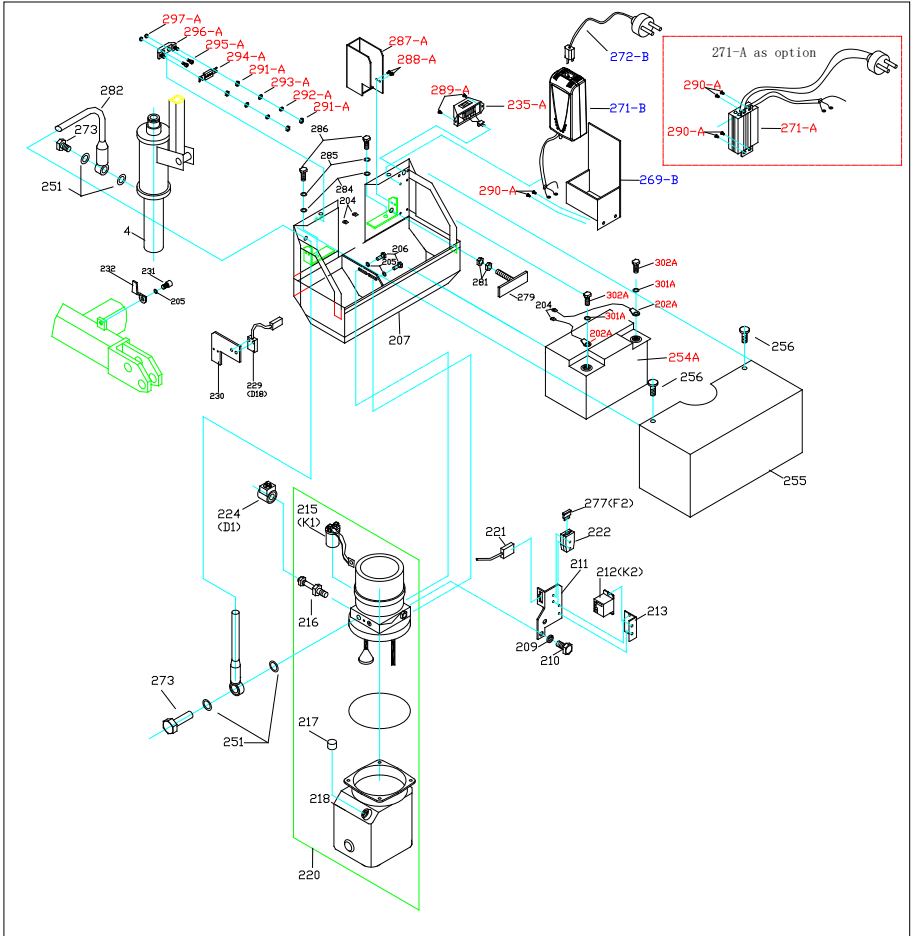
EXPLODED FIGURE & PARTS LIST



Item No.	Description	Q'ty
1	Fork	1
2	Screw	1
3	Nut	1
4	Power Unit	1
5	Hold Yoke	1
6	Wheel Yoke	1
7	Centrifugal Axle	2
8	Spacer	2
9	Wheel	2
10	Snap Ring	8
11	Pin	2
12	Snap Ring	12
13	Bush	2
14	Leg	2
15	Leg	1
16	Bush	2
17	Pin	2
18	Washer	2

Item No.	Description	Q'ty
19	Nut	2
20	Washer	8
21	Ball bearing	8
22	Front wheel	2
23	Wheel axle	2
24	Roller	4
25	Bush	2
26	Washer	4
27	Spring washer	2
28	Lock Nut	2
29	Screw	1
30	Wheel assembly (items 6,9,10,21)	1
31	Screw	1
32	Nut	1
33	Ball	51
34	Snap ring	1
35	Bush	1
36	quill bearing	1

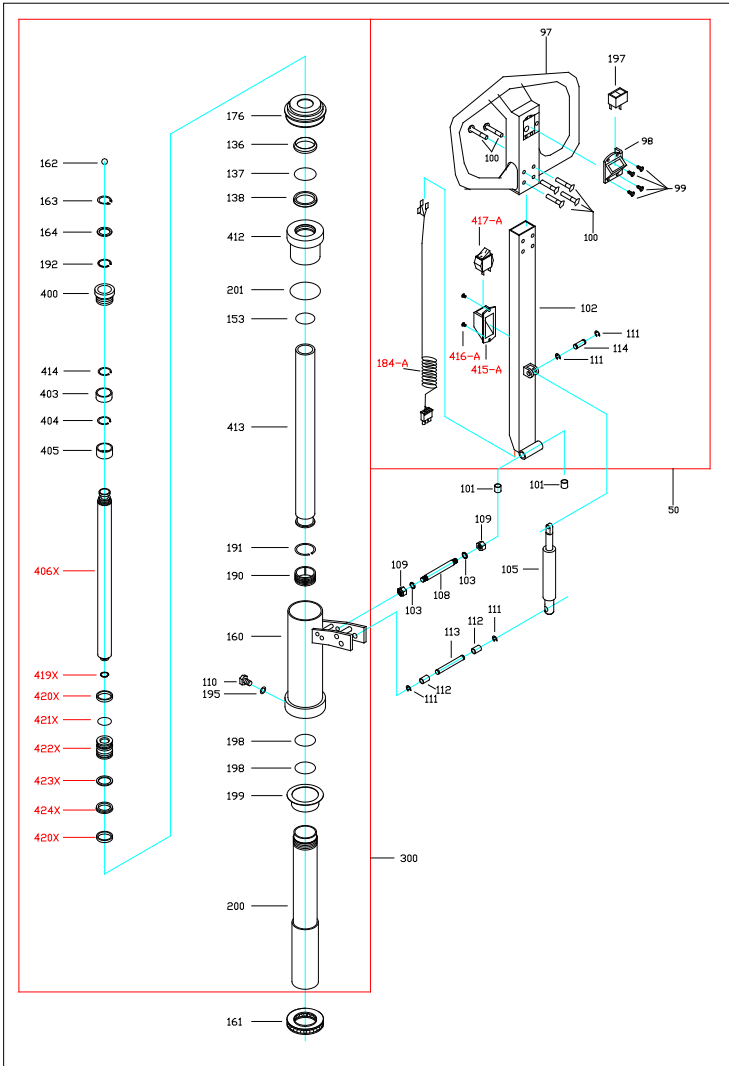
EXPLODED FIGURE & PARTS LIST OF ELECTRIC CONTROL ASSEMBLY



Item No.	Description	Q'ty
4	Power Unit	1
202A	connecting terminal(+)	1
202A	connecting terminal (-)	1
204	Terminal	2
205	Washer	3
206	Screw	2
207	Electric Control Case	1
209	Spring Washer	1
210	Screw	1
211	Fuse Base	1
212	Relay	1
213	Relay Base	1
215	Relay	1
216	Control Valve	1
217	Cap	1
218	Oil Tank	1
220	Pump Station Assembly	1
221	Switch Socket	1
222	Fuse Box	1
224	Magnet	1
225	Recharger Socket	1
229	Switch	1
230	Switch Base	1
231	Screw	1
232	Moving Plate	1
233	Cover	1
234	Switch	1
235	Volt Meter	1
251	Washer	4
254	Battery ,12V/60Ah	1

Item No.	Description	Q'ty
255	Cover	1
256	Screw	2
269-B	Recharger Box	1
271-A	Recharger (option)	1
271-B	Recharger	1
272-B	power cord	1
273	Screw	2
277	Fuse,5A	1
279	Fixing Screw for Battery	1
281	Nut	2
282	High Pressure Oil Pipe	1
284	Washer	2
285	Washer	2
286	Screw	2
287-A	Box	1
288-A	Screw	2
289-A	Screw	2
290-A	Screw	2
291-A	Nut	4
292-A	Spring Washer	2
293-A	Washer	2
294-A	Fuse(150A)	1
295-A	Screw	2
296-A	Fuse Base	1
297-A	Nut	2
235-A	Voltage Meter	1
301A	Washer	2
302A	Screw	2
303A	O-ring	1

EXPLODED FIGURE & PARTS LIST OF PUMP ASSEMBLY



Item No.	Description	Remark
97	Handle	1
98	Cover	1
99	Screw	4
100	Pin	6
101	Spacer	2
102	Handle tube	1
103	Washer	2
105	Tension spring	1
108	Pin	1
109	Screw	2
110	Adjusting screw	1
111	Snap ring	4
112	Sleeve	2
113	Pin	1
114	Pin	1
136	Scraper ring	1
137	O-ring	1
138	Y-ring	1
153	O-ring	1
160	Pump housing	1
161	Thrust bearing	1
162	Ball	1
163	Snap ring	1
164	Washer	1
176	Rubber sleeve	1
184-A	Switch wire & plug	1
190	Copper piston	1
191	Snap ring	1
192	Snap ring	1
195	Washer	1

Item No.	Description	Q'ty
197	Up-down switch	1
198	O-ring	2
199	Bushing	1
200	Cylinder	1
201	Back-Up ring	1
400	Bronze Bushing	1
403	Bushing	1
404	Snap Ring	1
405	Bushing	1
406X	Piston Rod	1
412	Cylinder Head	1
413	Cylinder	1
414	Snap Ring	1
415-A	Switch housing	1
416-A	Screw	6
417-A	switch	1
419X	Snap ring	1
420X	Bushing	2
421X	O-Ring	1
422X	Piston	1
423X	Back-Up Ring	1
424X	Y-Ring	1
50	Handle assembly	1
300	Pump Unit	1
*	Seal Kits: 136#、137#、138#、201#、153#、198#、 401#、402#、421X#、424X#	1