



**GLOBAL
INDUSTRIAL**

We can supply that.®

User's manual

Manual del usuario

Manuel de l'utilisateur

Customer Service
US: 1-800-645-2986

Servicio de atención al Cliente
US: 1-800-645-2986

Service à la clientèle
Canada: 888-645-2986

Instruction Manual

High Lift Pallet Truck



Note: Owner/Operator must read and understand this instruction manual before using the high lift pallet truck.

RevC: 4/27/2021

Specifications

Model	JL5210	JL6810	JL5215	JL6815
Rated Capacity	1000 kgs		1500 kgs	
Max. Lifting Height	800 mm			
Min. Fork Height	85 ± 2 mm			
Fork Length	1140 mm		1100mm	
Fork Overall Width	520mm	680mm	520mm	680mm
N.W.	92kgs	96kgs	104 kgs	109kgs

NOTE:

For loads below 150 kgs, truck will automatically perform quick lift. Heavier loads must be lifted at lower speed.

Safety Instructions

1. The truck shall be used in accordance with the instructions manual.
2. Do not place hands or feet under the fork at any time.
3. Do not work on sloped or inclined surfaces, only level ground.
4. Quick lifting is prohibited for loads of more than 150 kgs. Any manipulation of the pressure relief valve is strictly prohibited. Assembly, maintenance, and adjustments should be done by a trained professional. These people must be familiar with all safety regulations of European and national where the item is in use relating to the operation and maintenance of pedestrian controlled industrial trucks.
5. Load should be put on the fork center. Off-center loading is strictly prohibited.
6. The truck shall not be used to transport persons.
7. It is recommended to the driver to wear steel/composite toe shoes.

8. No modifications shall be carried out which adversely affect the compliance of the truck with prEN 1757-4.

Installation and Adjustment

1. Screw (part No.158)

- To prevent oil leaking from oil tank during transportation, Air Screw (part No.158) is replaced with Oil-sealing Screw in the factory. But it has to be replaced back when you put this truck in use.
- How to change: Screw out Oil-sealing Screw, then screw in Air Screw, thus keep oil tank always connecting with atmosphere.

2. Handle

During transportation, the handle is disassembled from the truck and packed separately. It has to be assembled back and adjusted properly and carefully before use.

A. Handle installation:

- Take 3 M10 socket head screws (No.185) and spring washers (No.186) & Hex Wrench from spare parts bag. Select handle to match the truck with the same fitting numbers.
- Assemble the handle on the Handle Base (No.181) with 3 M10 screws and Washers tightly.

Put the chain's Eye Bolt (No.110) in the slot at the front end of Pendulum Arm (No.112).

B. Handle adjustment

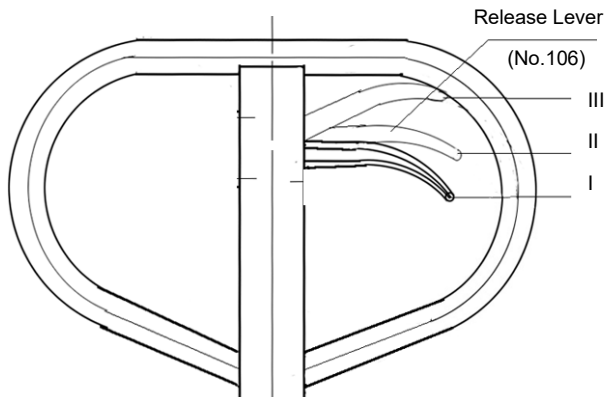
- **There are 3 different positions with different functions for the Release Lever**

(Part No.106)

Position I: Lifting for fork.

Position II: Neutral for fork.

Position III: Descending for fork.

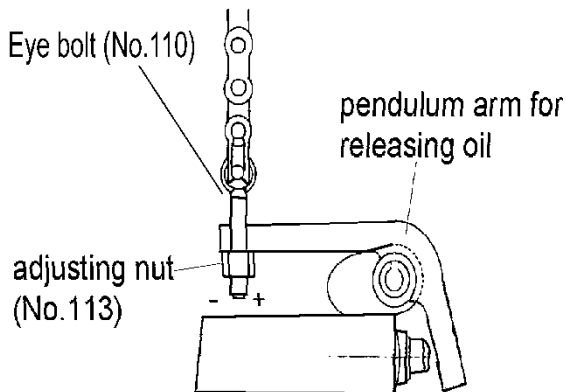


Picture 1

- **Test different functions of the Release Lever**

Problems	Turning direction of Lock Nut
Fork will not lift	- (counter-clockwise)
Fork will not lower	+ (clockwise)

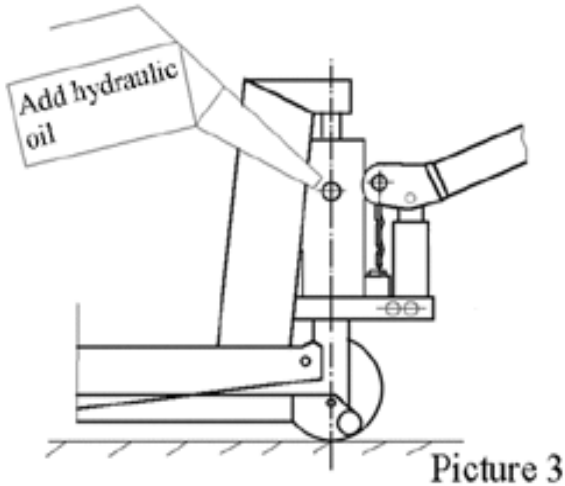
- If it does not function properly, then adjust Lock Nut (No.113) by following process. See picture 2.



picture 2

- **When to add oil**

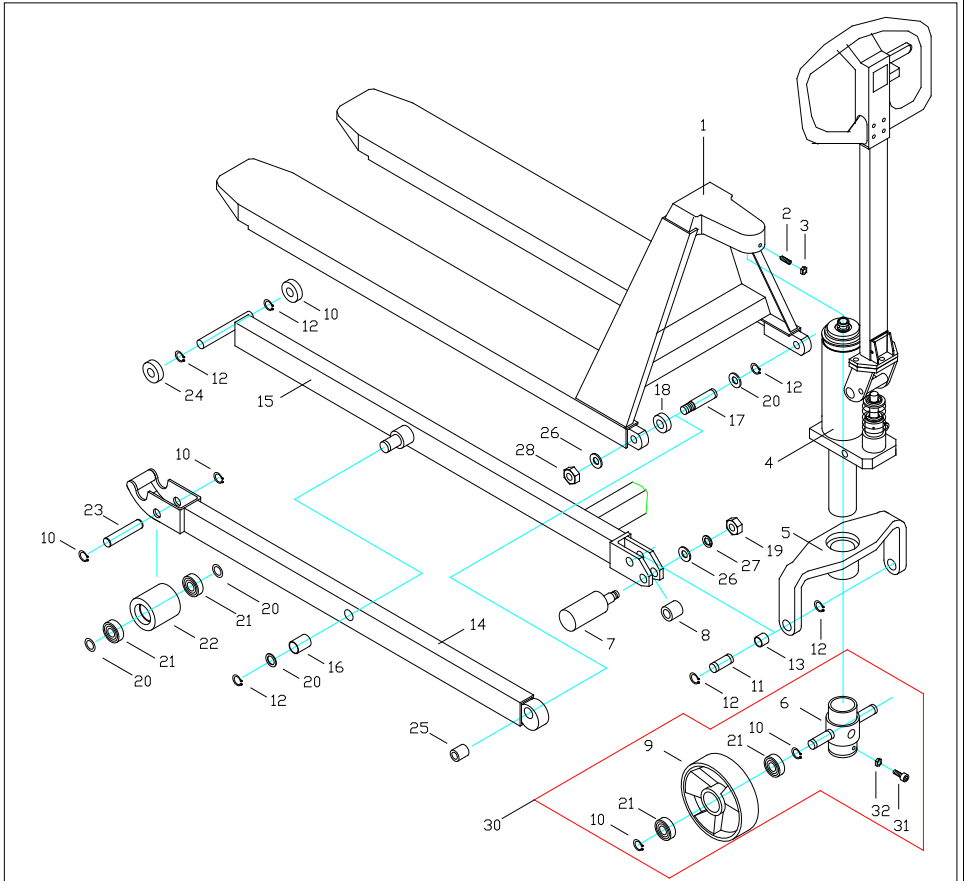
See Picture 3.



If the fork can't be pumped up to its rated highest position, you may have to add hydraulic oil into the oil tank. The hydraulic fluid to be used must have a viscosity of ISO VG22 or equivalence. Mixing of different fluids is prohibited!

Trouble Shooting Guide

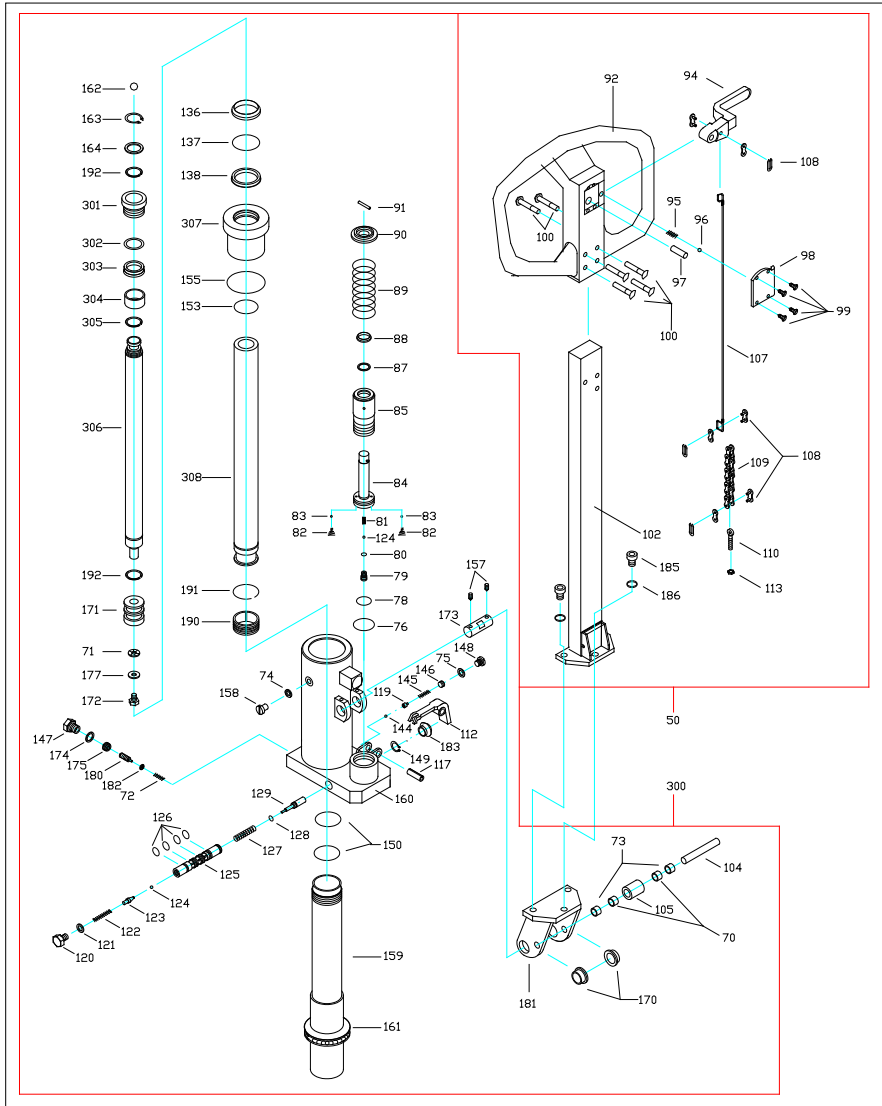
Items	Symptom	Possible Cause	Solutions
1	Fork cannot be pumped up.	1. Low oil level in oil tank. 2. Air trapped in hydraulic system. 3. Pendulum arm nut is not adjusted properly.	1. Add hydraulic oil. 2. Pump the handle several times. Bleed the system. 3. Adjust pendulum arm nut.(see picture 2)
2	Fork can't be released down.	Fork blocked. 1. Pendulum arm nut not adjusted properly.	1. Check and remove the block. 2. Adjust pendulum arm nut. (See picture 2.)
3	Fork can't be pumped up to rated highest position.	Hydraulic oil depleted	Add hydraulic oil (See picture 3.)
4	Neutral has no difference between position I and position II of release lever	Pendulum arm nut is not adjusted properly.	Adjust pendulum arm nut (See picture 2)



Parts List

Item No.	Description	Q'ty
1	Fork	1
2	Screw	1
3	Nut	1
4	Power Unit	1
5	Hold Yoke	1
6	Wheel Yoke	1
7	Centrifugal Axle	2
8	Spacer	2
9	Steering Wheel	2
10	Snap Ring	8
11	Pin	2
12	Snap Ring	12
13	Bushing	2
14	Leg	2
15	Leg	1
16	Bushing	2
17	Pin	2
18	Washer	2
19	Nut	2
20	Washer	8
21	Ball Bearing	8
22	Front Wheel	2
23	Wheel Axle	2
24	Roller	4

25	Bushing	2
26	Washer	4
27	Spring Washer	2
28	Lock Nut	2
31	Screw	1
32	Nut	1
30	Steering Wheel Assembly (incls.6,9,10,21,31,32)	1



Parts List

Item No.	Description	Q'ty
70	Bushing	2
71	Washer	1
72	Spring	1
73	Spacer	2
74	Washer	1
75	Gasket	1
76	O-Ring	1
78	O-Ring	1
79	Screw	1
80	O-Ring	1
81	Spring	1
82	Spring	2
83	Ball	2
84	Plunger	1
85	Pump	1
87	Y-Ring	1
88	Scraper Ring	1
89	Spring	1
90	Washer	1
91	Pin	1
92	Handle	1
94	Release Lever	1
95	Spring	1
96	Ball	1

97	Pin	1
98	Cover	1
99	Screw	4
100	Pin	6
102	Handle Tube	1
104	Pin	1
105	Roller	1
107	Release Rod	1
108	Chain Connector	3
109	Chain	1
110	Eye Bolt	1
112	Pendulum Arm	1
113	Pendulum Arm Nut	1
117	Pin	1
119	Seat	1
120	Screw	1
121	Gasket	1
122	Spring	1
123	Release Valve	1
124	Ball	2
125	Valve Insert	1
126	O-Ring	4
127	Spring	1
128*	O-Ring	1
129	Release Indicator	1
136	Scraper Ring	1
137	O-Ring	1
138	Y-Ring	1
144	Ball	1

145	Spring	1
146	Adjusting Screw	1
147	Sealing Screw	1
148	Screw	1
149	Snap Ring	1
150	O-Ring	2
153	O-Ring	1
155	O-Ring	1
157	Screw	2
158	Air Screw	1
159	Cylinder	1
160	Pump Housing	1
161	Thrust Bearing	1
162	Ball	1
163	Snap Ring	1
164	Washer	1
170	Bushing	2
171	Piston	1
172	Screw	1
173	Axle	1
174	Gasket	1
175	Lock Screw	1
177	Washer	1
180	Adjusting Screw	1
181	Handle Base	1
182	Adjusting Washer	1
183	Rubber Sleeve	1
185	Socket Head Screw	3
186	Spring Washer	3

190	Copper Piston	1
191	Snap Ring	1
192	Snap Ring	2
301	Bushing	1
302	Back-Up Ring	1
303	Y-Ring	1
304	Bushing	1
305	Snap Ring	1
306	Piston Rod	1
307	Cylinder Head	1
308	Cylinder	1
300	Pump Unit	1
50	Handle Assembly	1

Remark:

Parts with "" mark are supplied together with the High Lifter and packed in the poly bags.*

* VERSION FIVE