

Assembly Instructions	Instrucciones de Ensamblaje	Directives d'assemblage
Customer Service US: 1-800-645-2986	Servicio de atención al Cliente US: 1-800-645-2986	Service à la clientèle Canada: 888-645-2986

Power Scissor Lift Table



Note: This Manual has been prepared for skilled and competent personnel. It provides instructions for using the product correctly and parts list. This Manual cannot replace the professional skills and expertise of the user.

I. ⚠ WARNING!

If operating the lift table improperly, a person may be seriously injured. Therefore, operate properly according to the following instruction

- Read & thoroughly understand the Instruction Manual completely before using. Follow all safety instructions strictly.
- It is necessary to check all safety devices before operation.
- Make sure that there are no obstacles in the working area.
- Do not put a foot or hand in scissors mechanism or through the frame.
- Engage the maintenance bars before working on the lift table. See part VII
- Do not overload the lift table. The load should be distributed on the table according to relevant load distribution chart.
- Pay attention if local voltage and frequency are the same as the input specification of the lift table.
- Use the lift table on flat and solid ground.

Model 989018, 989034, 989035, 989036, 989037

- All the electrical connection and disconnection operations must be carried out by skilled and competent personnel.
- While in operation, it is forbidden to contact the moving parts of the lift table.
- Do not lift or lower the load, if it is unstable or otherwise could harm a person or other object.
- It is forbidden to lift the load, which perhaps does harm to a person or other object.
- It is forbidden to operate the lift table while a person is under the table.
- Do not adjust the safety valve of the hydraulic power pack.
- It is forbidden to operate the lift table, if there is any small structure distortion.
- Do not use in an explosive or flammable place.

II. ⚠ CAUTION!

If operating the lift table improperly, a person may be injured. Therefore, operate properly according to the following instruction.

- The lift table is a movable lifter designed to lift or lower rated load. Do not use it for other purposes.
- It is forbidden to alter the lift table without manufacturer's written permission.
- It is necessary to use the replacement parts designated by manufacturer.
- Make sure to keep some distance between the table and ambient objects enough to operate the lift table safely.
- Keep the hydraulic system in clean and safe condition.
- The hydraulic power pack features an electric lowering control. The coils must be fed with the required voltage as described on those coils. The power supply voltage should not exceed $\pm 10\%$ of the rated required voltage.
- Always do maintenance and routine checks while the lift table is unloaded.
- The lift table is not waterproof and should be used in a dry environment.

III. DAILY INSPECTION

Daily inspection is effective to find the malfunction or fault on the lift table. Before operation, check the lift table according to the following points.

Do not use the lift table if any malfunction or fault is found.

- Check all the terms of WARNING and CAUTION.
- Check scratches, bending or crack on the lift table.
- Check smooth movement of the table.
- Check if there is any hydraulic oil leakage.
- Check for any imbalance on the table.
- Check if all the bolts and nuts are firmly tightened.

IV. OPERATING THE LIFT TABLE

1. LOADING

The maximum capacity of the lift table is 2200 lbs. The load should be distributed on the lift table equally.

2. LIFTING THE TABLE

! CAUTION!

Do not overload the lift table.

Ensure the balance of loading. Do not load partially or concentrically.

- Check to disengage the emergency stop switch.
- Push the UP button and power pack starts to work to lift the load.
- Release the UP button and power pack stops working.

3. LOWERING THE TABLE

Do not put foot or hand in scissors mechanism

! WARNING!

- Push the DOWN button and the table will lower.
- Release the DOWN button and the table will stop.
Note: The table is equipped with an aluminum guard to avoid accidental danger.
- If there is any interference while the table is descending, the aluminum guard will stop the operation once it's in contact with an object. Remove the interference and press the UP button to resume operation.

4. EMERGENCY STOP

There are two methods of emergency stop as follows.

- Push down the emergency stop switch.
- Interference when in contact with the table descending.

5. TRANSPORTATION

Use the attached ring bolts to safely transport the lift table to the floor or installation surface, following the steps below.

- Attach chain hooks such as sling hooks, S-hooks, pull chains or similar hooking system onto each of the ring bolts.
- Suspend the chain securely on a forklift or similar equipment and move the suspended lift table to the location it is to be installed. The installation area should be clean and located near 110 Volt power.

Note: Using the RING BOLTS is the suggested manner of moving the table; all other methods are not recommended.

V. WALL MOUNT BRACKET INSTRUCTION

- Use M8 screws, adhesive tape, or velcro strips to attach the wall mount bracket onto the mounting surface.
Note: Mounting hardware not included. Hardware type and hardware size varies on wall thickness and material.
- Safely store the hand pendant control on the wall mount bracket, when not in use.

VI. HYDRAULIC CIRCUIT & ELECTRIC PRINCIPLE DIAGRAM

2

1321

See Figure 1 & Figure 2.

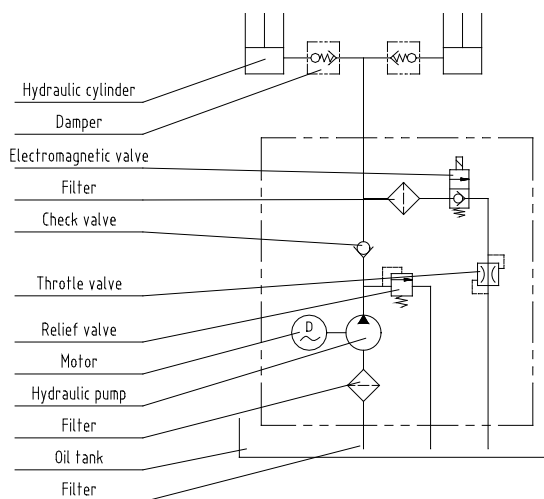


Fig. 1 Hydraulic circuit

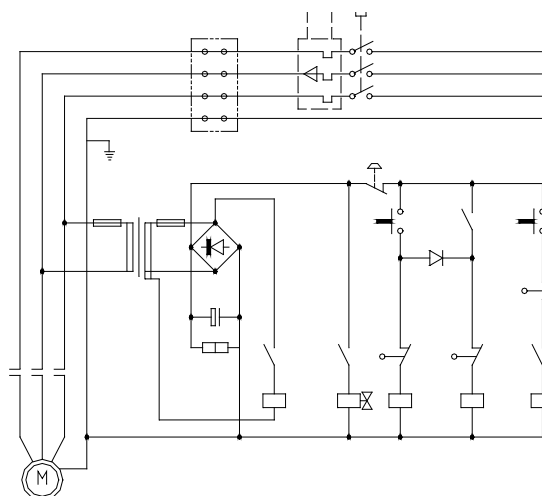


Fig. 2 Electric Principle Diagram

VII. MAINTENANCE BAR OPERATING INSTRUCTION

To engage the Maintenance Bars:

1. Remove all load from the platform and raise the lift table to its fully-raised position.
2. Rotate each maintenance bar until the bar contacts the surface of the base channel. Ensure both bars are positioned correctly.
3. Lower the lift by depressing the DOWN button. The lift will lower slightly until the maintenance bars reach the corner of the base. Release the DOWN button. ALWAYS check the position of both maintenance bars before going under the platform or servicing the lift.

To Disengage The Maintenance Bars:

5. Depress the UP button to raise the platform to its fully-raised position. When the lift is fully raised, release the UP button.
6. Rotate each maintenance bar to its stored position. ENSURE both bars are in their stored position.

VIII. SPECIFICATIONS

Model	989018	989034	989035	989036	989037
Capacity	2200 lbs	2200 lbs	3300 lbs	4840 lbs	4400 lbs
Lowered Height	7-3/4"	7-3/4"	7-3/4"	8-5/8"	7-3/4"
Raised Height	40"	40"	40"	40"	40"
Platform Length	48"	48"	48"	72"	48"
Platform Width	28"	36"	48"	48"	48"
Lift Time with rated load	17	17	25	30	30
Lowering time with rated load	30	30	40	42	42
Lift Time without load	16.5	16.5	24	27	27
Lowering time without load	35	35	42	45	45
Power Pack	110V/60HZ,AC1.1KW		110V/60HZ,AC1.5KW		
Net Weight	448 lbs	484 lbs	638 lbs	750 lbs	638 lbs

IX. SERVICE INSTRUCTIONS

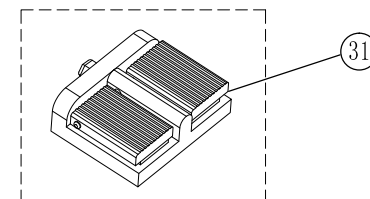
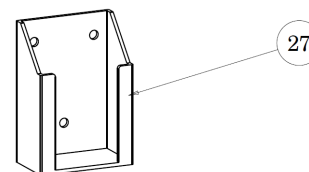
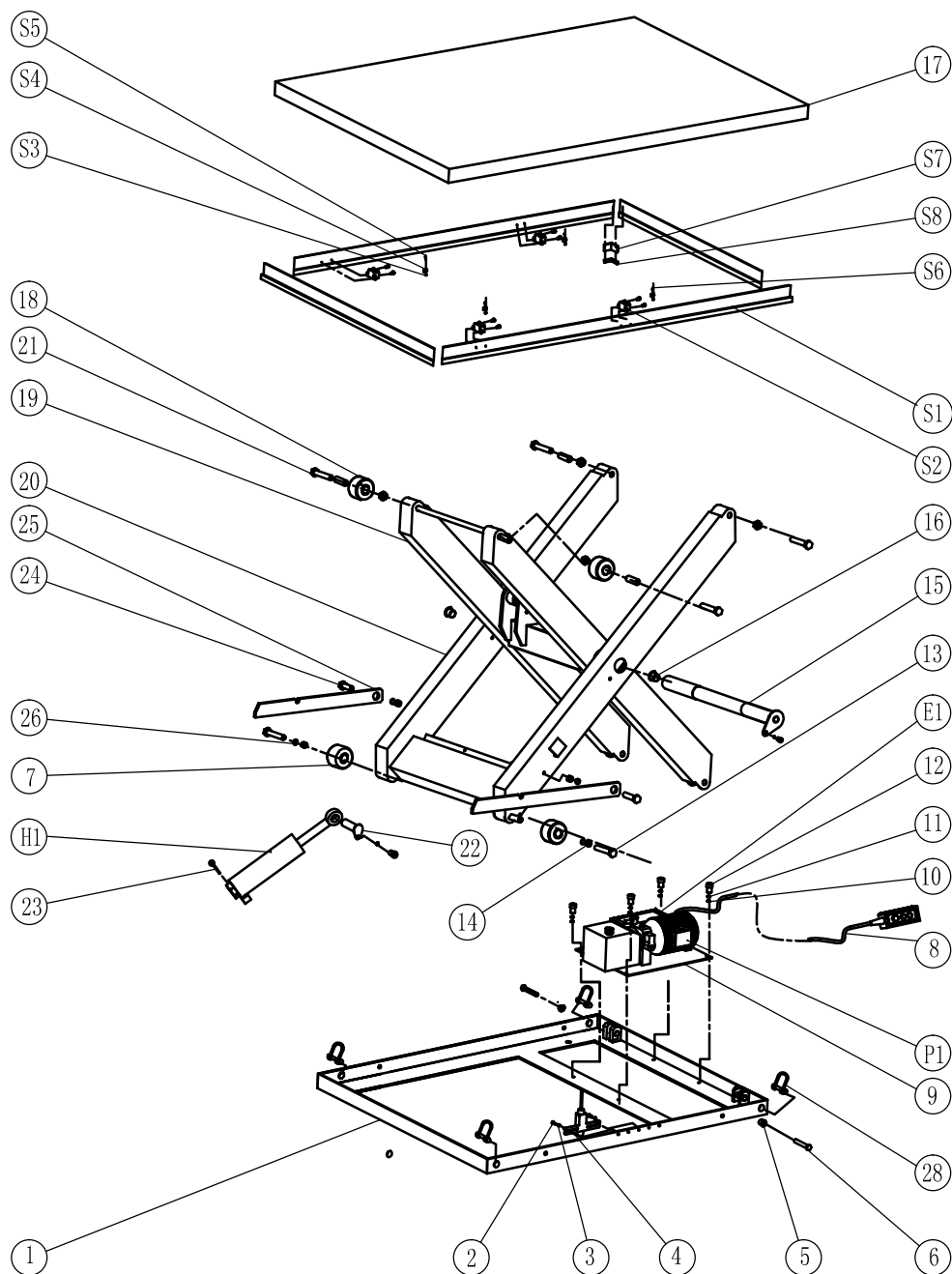
- Do a routine check of fasteners, packing and oil leaking.
- Do a routine check of the lift table functions.
- Before servicing the lift table, make sure to turn off the AC power supply.
- After servicing, it is necessary to check the function of the lift table again.
- ONLY a qualified personnel can do service work.
- Do a routine check of the micro-switches on the safety guard.
- Do routine check of the hydraulic system by listening to abnormal noise.
- Caution: It is required to turn off the AC power supply before touching the motor's surface.
- Replace the oil filter after prolong usage.
- Appropriate lubrication is necessary to make the lift table work easily and have a prolonged service life.
- Following table is recommended to service the lift table periodically

Content	After every 500 hours' working or every 3 months later	After every 2000 hours' working or every year
Check oil level of oil tank	✓	
Check the cleanliness of oil filter	✓	
Fasten all the connecting parts again	✓	
Check wear and tear of pressure oil pipes	✓	
Check hydraulic cylinder	✓	
Fix main parts tightly again	✓	
Check the function of micro-switches	✓	
Check whole working state of the lift table	✓	
Lubricate all the joints and pivot points	✓	
Check wear and tear of all axial bushes		✓
Replace hydraulic oil for the first time	Accumulated ten hours of usage	
Replace hydraulic oil		✓
Check oil leaking		✓

X. TROUBLE SHOOTING

Note: Before service, refer to part VII. and follow the maintenance bar operating instruction. It is required to engage the maintenance bars to prevent the table from lowering accidentally.

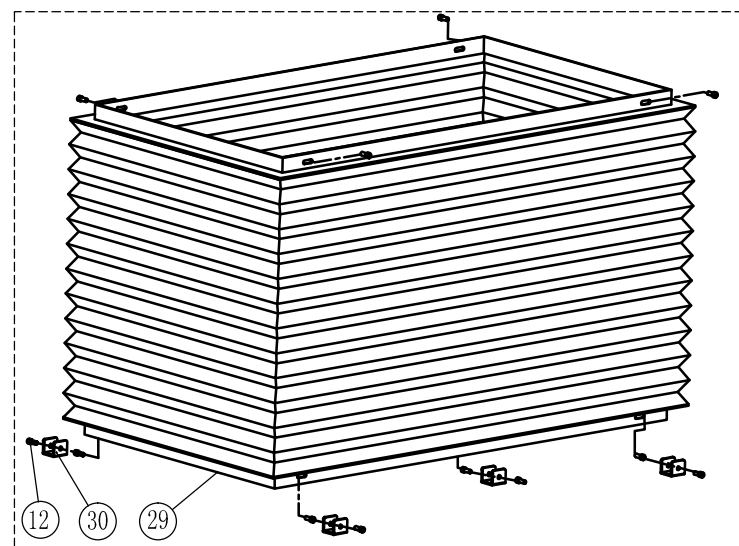
Trouble	Cause	Solution
Table cannot lift while motor works normally	<ul style="list-style-type: none">• Eyebolt has not been removed• AC voltage phases mistake• Electromagnetic dysfunctions• The table is overloaded	<ul style="list-style-type: none">• Remove eyebolt• Correct AC voltage phases• Check the function of electro-magnetic valve and repair it• Remove excessive load
Table cannot lift and motor does not work	Lowering limit switch damaged	Replace limit switch
Table cannot lower	<ul style="list-style-type: none">• Lowering limit switch or micro-switch on safety guard damaged• Electromagnetic valve dysfunctions• Safety guard works• Something wrong with electric circuit board	<ul style="list-style-type: none">• Replace lowering limit switch or micro-switch.• Check the function of electro-magnetic valve and repair it• Strike the UP button slightly• Replace electric circuit board
Table's legs go over limit position while table lowers	<ul style="list-style-type: none">• Internal leaking in electromagnetic valve• Packing damaged in hydraulic cylinder	<ul style="list-style-type: none">• Repair electromagnetic valve and if necessary replace it• Check and replace packing
Table cannot reach the highest position	<ul style="list-style-type: none">• Insufficient oil• Limit switch damaged	<ul style="list-style-type: none">• Replenish oil• Check and repair limit switch. If necessary, replace it



Optional

OPTIONAL: Bellows Package
(depending on size, 989019, 989038, 989039, 989040)

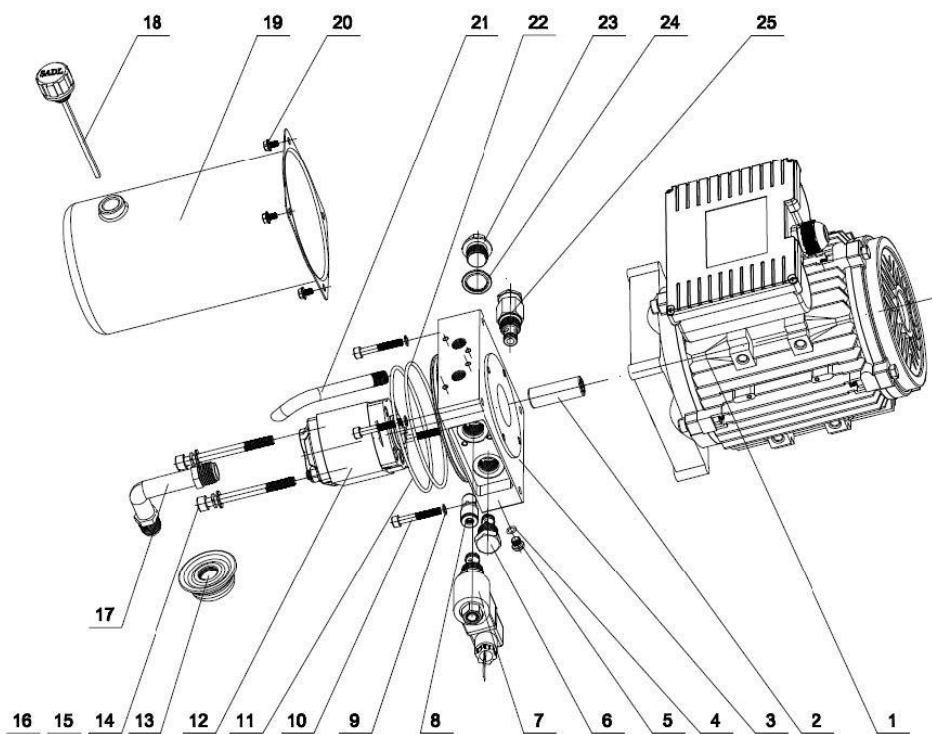
To install the bellow package, line up part #30 brackets with the holes on the table base and fasten part #12 screws. Lift up the bellows package to the table top and secure with screws.



PARTS LIST

No.	Description	Model	Qty.	Remarks
1	Chassis		1	
2	Bolt	M6X16	2	
3	Washer	φ6	2	
4	Safety switch	8104	1	
5	Self-locking nut	M14	8	
6	Connecting bolt	M14X60	4	
7	Roller	2G2849-02-09	2	
8	Handle control	COBC-AP1	1	
9	Pump pack base	HW2001-30-00	1	
10	Washer	φ10	4	
11	Spring washer	φ10	4	
12	Fixed bolt	M10X20	6	
13	Bolt	M8X20	2	
14	Self-lubricating iron set	SF10-2230	4	
15	Long shaft rod	2G2849-06-00	1	
16	Self-lubricating iron set	SF10-10F 3560	2	
17	Table		1	
18	Inside scissor assembling roller	2G2849-02-09	2	
19	Inside scissor assembling		1	
20	Outside scissor assembling		1	
21	Connecting bolt	M8X25	2	

22	Short shaft rod		2	
23	Cotter pin	φ5x35	2	
24	Bolt	M16X20	2	
25	The inner ring	2G2849-02-07	2	
26	Washer	φ8	2	
27	Control - Wall Mount Bracket		1	
28	Ring bolts		4	
29	Bellows accordion skirt	Check size	1	Optional
30	U bracket connector		4	
31	Foot Control	MDFS-65, AC220V,3A	1	
S1	Safety frame		4	
S2	Safety switch	LX12-2	2	
S3	Fixed bolt	M4X20	4	
S4	Self-locking nut	M8	4	
S5	Fixed-board		4	
S6	Spring	HW2001-17-00	4	
S7	Fixed-piece	HW2001-16-00	4	
S8	Sheet rubber	HW2001-13-00	4	
P1	Hydraulic power pack	1.1KW YBZ-C4.2ZH2/MBABT	1	
E1	Electric box		1	
H1	Hydro-cylinder	80-40	1	

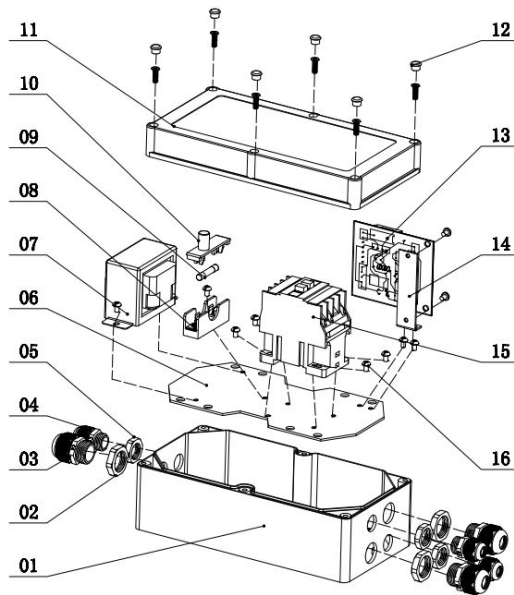


HYDRAULIC POWER PACK (P1)

No .	Description	Model	Qty .	Remarks
1	Aluminum alloy motor	AM11-5FMK-3BC1R	1	220V,380V,Or 415V
2	Agitating device	YBZ-CP9T-K-50	1	
3	Pump frame	LBZ-N2FK-1	1	
4	O ring	EKM 6*1.5	1	
5	Hexagonal socket head plug	YBZ1-PG02A	1	
6	Check valve	DF08-01-00	1	
7	Solenoid valve	LSV-08-2NCP-3D	1	

8	Built-in balancing valve	BL-I2.0	1	
9	Light type spring washer	GB/T859-1987	4	
10	Socket head cap screw	GB/T70.1-2000 M6*40	4	
11	O ring	EKM 114*3	1	
12	Gear oil pump	CBKA-F2.1F	1	
13	Filter oil components	YBZ-4-100	1	
14	Socket head cap screw	GB/T70.1-2000 M8*80	2	
15	Light type spring washer	GB/T859-1987	2	
16	Washer	GB/T95-1985	2	
17	The inlet pipe	YBZ-4-003	1	
18	Vent hood components	YBZ-BT-G3/8"	1	
19	Hydraulic tank group	KR12W 2L	1	
20	Hexagon bolt with flange	GB/T5787-1986 M5*8	4	
21	Oil return pipe	YBZ-D5B4H2/1-02	1	
22	O ring	A-046 107.67*1.78	1	
23	Bolt	JB/ZQ4450-1997 M20*1.5	1	
24	Combined sealing washer	JB982-77 20	1	
25	Hydraulic	LHRV-08-42	1	

Electric Control Box (E1)



Electric Box			
NO.	Description	Model	Qty
01	Electric appliance box seat		1
02	Wire fixing joint nut	M20	3
03	Electric wire fixing joint	M20	3
04	Electric wire fixing joint	M16	3
05	Wire fixing joint nut	M16	3
06	Electric appliance fixing plate		1
07	Transformer	0V/18V/24V	1
08	Fuse holder		1
09	Fuse	5A	1
10	Fuse cap		1
11	The electric fox cap		1
12	Dush plug		6
13	Circuit board		1
14	Circuit board fixing sheet		1
15	Contactor	AC24V	1
16	Screw	M4*10	11