

User's manual	Manual del usuario	Manuel de l'utilisateur
Customer Service US: 1-800-645-2986	Servicio de atención al Cliente México: 01.800.681.6940	Service à la clientèle Canada: 888-645-2986

Lift Table

Model 989010



Note: Owner and operator MUST read and understand these operating instructions before using this lift table.

TABLE OF CONTENTS

1. Warnings.....	2
2. Daily Inspection.....	3
3. Operating Lift Table	3
4. Specifications.....	4
5. Service Instructions	4
6. Part List of Table	5
7. Part List of Pump.....	6

Thank you for using this lift table. Your lift table is made of high quality steel and is designed for the lifting and horizontal transport of loads on a level, fixed base. For your safety, please carefully read this instruction manual before using it and keep it on file for future reference.

NOTE: All of the information reported herein is based on data available at the moment of printing. We reserve the right to modify our own products at any moment without notice and incurring in any sanction. So, it is suggested to always verify possible updates.

1. WARNINGS

- 1、DO NOT put foot or hand in scissors mechanism.
- 2、DO NOT allow other person to stand in front or behind lift table when it is moving.
- 3、DO NOT move lift table when table is in raised position. Load could fall down.
- 4、DO NOT enter under table.
- 5、DO NOT overload lift table.
- 6、DO NOT put foot in front of rolling wheels.
- 7、WATCH difference of floor level when moving lift table. Load could fall down.
- 8、DO NOT use lift table on slope or inclined surface, lift table may become uncontrollable and create danger.
- 9、DO NOT lift people. People could fall down and suffer severe injury.
- 10、Read this operation manual carefully before operating lift table. Improper operation can be dangerous.
- 11、This lift table is a movable lifter designed to lift or lower rated load on table. DO NOT use lift table for purposes other than its intended use.
- 12、Only allow operators who have read and understand the instructions to operate the lift table
- 13、DO NOT lower table too fast. Load could fall down and cause injury.
- 14、KEEP watching the condition of load. Stop operating lift table if load

becomes unstable.

- 15、 Apply brakes when sliding load on or off table.
- 16、 DO NOT side or end load. Load must be distributed evenly across table area.
- 17、 DO NOT use lift table with unstable or unbalanced load.
- 18、 Practice maintenance work according to service instructions.
- 19、 DO NOT modify lift table without manufacturers written consent.
- 20、 REMOVE load from table and use safety stopper to prevent table from lowering when servicing lift table.
- 21、 This lift table is not designed to be water resistant. Use lift table under dry conditions.

2. DAILY INSPECTION

Daily inspection is effective for preventing injuries caused by product damage.

Check lift table on the following points before operation .

- (1) Check for scratches, bending or cracking on the lift table.
- (2) Check if there is any oil leakage from the cylinder.
- (3) Check for vertical creep of the table.
- (4) Check the smooth movement of the wheels.
- (5) Check the brake function.
- (6) Check that all the bolts and nuts are tightened firmly.

CAUTION: *DO NOT use lift table if any malfunction or fault is found.*

3. OPERATING LIFT TABLE

3-1. How to use the brake.

CAUTION: Use brakes when the lift is stationary to prevent sudden movement.

The brake is equipped with a swivel caster on one side.

- (1) To apply the brakes, press the brake pedal down.
- (2) To release the brakes, lift the brake pedal up.

3-2. Lifting the table

WARNING

1. DO NOT overload lift table. Stay within its rated capacity.
2. DO NOT side or end. Load must be distributed evenly across table area.

Press the lifting pedal several times until the table reaches the desired position. The table does not elevate after reaching the highest position even if the lifting pedal is pressed. The table lowers slightly after reaching the highest position.

MAXIMUM CAPACITY OF TABLE
989010
770 lbs

NOTE: The hydraulic cylinder is designed to hold table. As is the nature of hydraulic systems, table lowers very slowly over an extended period of time. Please note the table does not stay at the same position indefinitely.

3. To lower the table, pull the control handle.

Lift Table

4. Specifications

Model	Capacity (lbs)	Table (in)	Table Height (in)	Wheel (in)	Weight (lbs)
989010	770	36 x 20	14 - 51	Φ5	225

5. Service Instructions

5-1. Change hydraulic oil every 12 months.

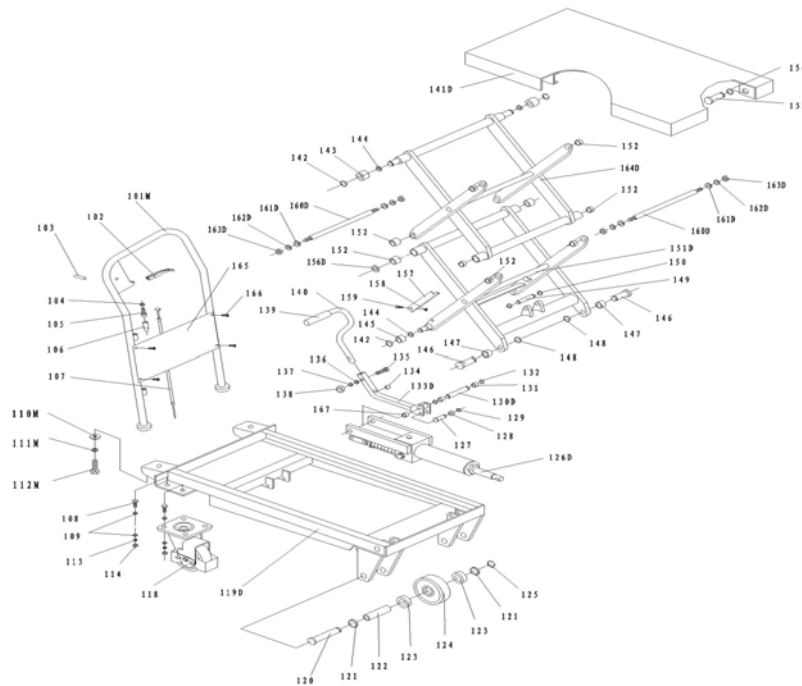
5-2. Lubricate each point described below every month:

- (1) Fitting of cylinder---Oil
- (2) Roller friction surface---Grease
- (3) Link pin ---Oil
- (4) Pedal fitting point---Oil
- (5) Grease nipple---Grease

ATTENTION

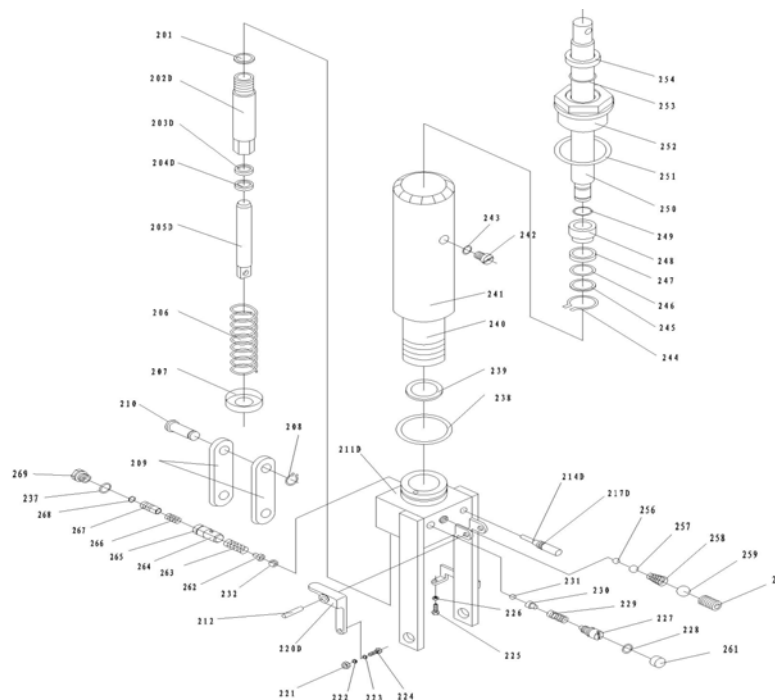
1. Follow all federal and local recycling laws when disposing of hydraulic fluid, oil, and grease.

6. Part List of Table



No	Description	Qty.	No	Description	Qty.
101M	Handle Grip (Cr-Pl)	1	136	Washer	1
102	Control Handle	1	137	Elastic Washer	1
103	Elastic Pin	1	138	Nut	1
104	Nut	1	139	Protecting Cover	1
105	Bolt with Hole	1	140	Pedal Bar (Cr-Pl)	1
106	Jacket	1	141D	Table(304)	1
107	Pull Rod	1	142	Retaining Ring	2
108	Bolt	8	143	Roller	2
109	Washer	16	144	Washer	2
110M	Big Washer	2	145	Roller	2
111M	Elastic Washer	2	146	Pin	2
112M	Bolt	2	147	Bushing	2
113	Elastic Washer	8	148	Retaining Ring	2
114	Nut	8	149	Pin	1
118	Universal Wheel	2	150	Retaining Ring	2
119D	Frame(304)	1	151D	Fork Arm (EP)	1
120	Pin	2	152	Bushing	8
121	Washer	4	153	Pin	2
122	Axle	2	154	Retaining Ring	2
123	Bearing	4	156D	Washer	4
124	Wheel	2	157	Support Plank	2
125	Retaining Ring	2	158	Nut	2
126D	Pump Unit (EP)	1	159	Screw	2
127	Pin	1	160D	Long Shaft (EP)	2
128	Washer	1	161D	Washer	4
129	Retaining Ring	1	162D	Washer	4
130D	Pin	1	163D	Nut	4
131	Washer	2	164D	Top Fork Arm (EP)	1
132	Retaining Ring	2	165	Protecting board (Cr-Pl)	1
133D	Connecting Rod (304)	1	166	Bolt	4
134	Cushion	1	167	Bushing	2
135	Bolt	1			

7. Part List of Pump



No	Description	Qty.	No	Description	Qty.
201	Seal Washer	1	240	Cylinder	1
202D	Pump Cylinder	1	241	Housing	1
203D	Dust Ring	1	243	Bolt	1
204D	Y-Seal	1	244	Retaining Ring	1
205D	Pump Piston	1	245	Washer	1
206	Spring	1	246	O-Ring	1
207	Spring Cap	1	247	Cup Packing	1
208	Retaining Ring	1	249	Piston Rod	1
209	Joint Plate	1	250	Seal Washer	1
210	Pin	1	251	Cylinder Cap	1
211D	Pump Body	1	252	O-Ring	1
212	Elastic Pin	1	253	Dust Ring	1
214D	Strike Pin	1	254	Steel Ball	1
217D	O-Ring	2	255	Steel Ball	1
220D	Lever Plate	1	256	Spring	1
221	Nut	1	257	Steel Ball	1
222	Elastic Washer	1	258	Steel Ball	1
223	Washer	1	259	Screw	1
224	Bolt With Hole	1	260	Cup	1
225	Bolt With Hole	1	261	Seat of Steel Ball	1
226	Nut	1	262	Spring	1
227	Adjusting Bolt	1	263	Seat of Valve	1
228	O-Ring	1	264	O-Ring	1
229	Spring	1	265	Spring	1
230	Seat of Steel Ball	1	267	Core of Valve	1
231	Steel Ball	1	268	Retaining Ring	1
232	Steel Ball	1	269	Plug	1
237	Seal Washer	1			
238	O-Ring	1			
239	Seal Washer	1			