

User's manual	Manual del usuario	Manuel de l'utilisateur
Customer Service US: 1-800-645-2986	Servicio de atención al Cliente México: 01.800.681.6940	Service à la clientèle Canada: 888-645-2986

## Lift Table

Model 989009



**Note: Owner and operator MUST read and understand these operating instructions before using this lift table.**

# Lift Table

## TABLE OF CONTENTS

<b>1. Warnings.....</b>	<b>2</b>
<b>2. Daily Inspection .....</b>	<b>3</b>
<b>3. Operating Lift Table .....</b>	<b>3</b>
<b>4. Specifications.....</b>	<b>4</b>
<b>5. Service Instructions .....</b>	<b>4</b>
<b>6. Part List of Table .....</b>	<b>5</b>
<b>7. Part List of Pump.....</b>	<b>7</b>

Thank you for using this lift table. Your lift table is made of high quality steel and is designed for the lifting and horizontal transport of loads on a level, fixed base. For your safety, please carefully read this instruction manual before using it and keep it on file for future reference.

**NOTE: All of the information reported herein is based on data available at the moment of printing. We reserve the right to modify our own products at any moment without notice and incurring in any sanction. So, it is suggested to always verify possible updates.**

### 1. WARNINGS

- 1、 DO NOT put foot or hand in scissors mechanism.
- 2、 DO NOT allow other person to stand in front or behind lift table when it is moving.
- 3、 DO NOT move lift table when table is in raised position. Load could fall down.
- 4、 DO NOT enter under table.
- 5、 DO NOT overload lift table.
- 6、 DO NOT put foot in front of rolling wheels.
- 7、 WATCH difference of floor level when moving lift table. Load could fall down.
- 8、 DO NOT use lift table on slope or inclined surface, lift table may become uncontrollable and create danger.
- 9、 DO NOT lift people. People could fall down and suffer severe injury.
- 10、 Read this operation manual carefully before operating lift table. Improper operation can be dangerous.
- 11、 This lift table is a movable lifter designed to lift or lower rated load on table. DO NOT use lift table for purpose other than its intended use.
- 12、 Only allow operators who have read and understand the instructions to operate the lift table
- 13、 DO NOT lower table too fast. Load could fall down and cause injury.
- 14、 KEEP watching the condition of load. Stop operating lift table if load

# Lift Table

becomes unstable.

- 15、 Apply brakes when sliding load on or off table.
- 16、 DO NOT side or end load. Load must be distributed evenly across table area.
- 17、 DO NOT use lift table with unstable or unbalanced load.
- 18、 Practice maintenance work according to service instructions.
- 19、 DO NOT modify lift table without manufacturers written consent.
- 20、 REMOVE load from table and use safety stopper to prevent table from lowering when servicing lift table.
- 21、 This lift table is not designed to be water resistant. Use lift table under dry conditions.

## 2. DAILY INSPECTION

Daily inspection is effective for preventing injuries caused by product damage.

Check lift table on the following points before operation .

- (1) Check for scratches, bending or cracking on the lift table.
- (2) Check if there is any oil leakage from the cylinder.
- (3) Check for vertical creep of the table.
- (4) Check the smooth movement of the wheels.
- (5) Check the brake function.
- (6) Check that all the bolts and nuts are tightened firmly.

**CAUTION:** *DO NOT use lift table if any malfunction or fault is found.*

## 3. OPERATING LIFT TABLE

### 3-1. How to use the brake.

**CAUTION:** Use brakes when the lift is stationary to prevent sudden movement.

The brake is equipped with a swivel caster on one side.

- (1) To apply the brakes, press the brake pedal down.
- (2) To release the brakes, lift the brake pedal up.

### 3-2. Lifting the table

#### WARNING

1. DO NOT overload lift table. Stay within its rated capacity.
2. DO NOT side or end. Load must be distributed evenly across table area.

Press the lifting pedal several times until the table reaches the desired position. The table does not elevate after reaching the highest position even if the lifting pedal is pressed. The table lowers slightly after reaching the highest position.

MAXIMUM CAPACITY OF TABLE
989009
330 lbs

**NOTE:** The hydraulic cylinder is designed to hold table. As is the nature of hydraulic systems, table lowers very slowly over an extended period of time. Please note the table does not stay at the same position indefinitely.

3. To lower the table, pull the control handle.

# Lift Table

## 4. Specifications

Model	Capacity (lbs)	Table (in)	Table Height (in)	Wheel (in)	Weight (lbs)
989009	330	27.5 x 17.7	9 - 28	Φ4	101

## 5. Service Instructions

5-1. Change hydraulic oil every 12 months.

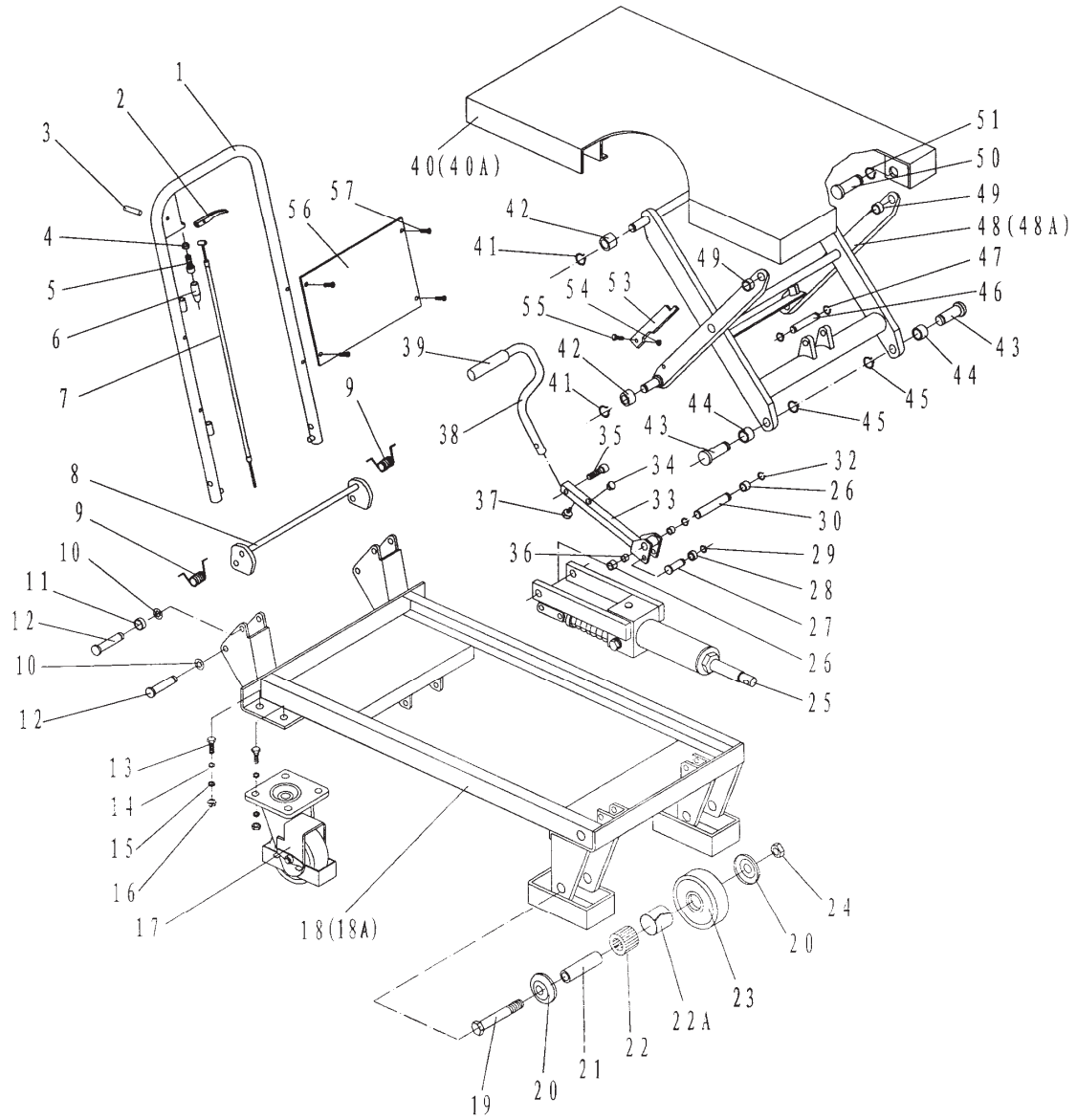
5-2. Lubricate each point described below every month:

- (1) Fitting of cylinder---Oil
- (2) Roller friction surface---Grease
- (3) Link pin ---Oil
- (4) Pedal fitting point---Oil
- (5) Grease nipple---Grease

### ATTENTION

1. Follow all federal and local recycling laws when disposing of hydraulic fluid, oil, and grease.

## 6. Part List of Table

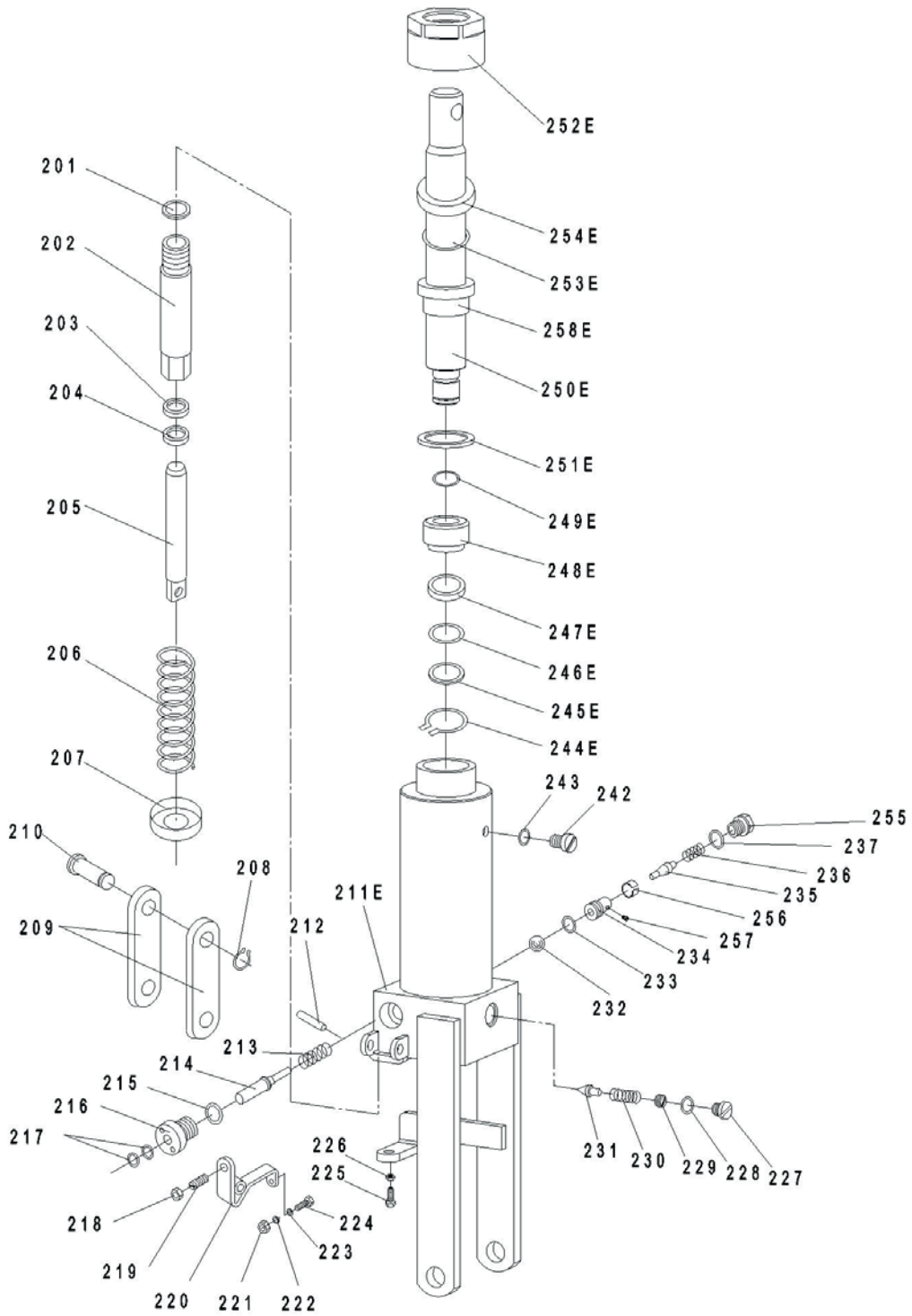


# Lift Table

No	Description	Quantity	No	Description	Quantity
1	Handle Grip (Cr-Pl)	1	30	Pin	1
2	Control Handle	1	32	Retaining Ring	2
3	Elastic Pin	1	33	Connecting (304)	1
4	Nut	1	34	Cushion	1
5	Bolt With Hole	1	35	Bolt	1
6	Jacket	1	36	Bushing	2
7	Pull Line	1	37	Cushion	1
8	Long Shaft (304)	1	38	Pedal Bar (Cr-Pl)	1
9	Spring	2	39	Protecting Cover	1
10	Retaining Ring	4	40	Table (304) -EU	1
11	Washer	2	40A	Table (304) -USA	1
12	Pin	4	41	Retaining Ring	4
13	Bolt	8	42	Roller	4
14	Washer	8	43	Pin	2
15	Elastic Washer	8	44	Bushing	2
16	Nut	8	45	Retaining Ring	2
17	Universal Wheel	2	46	Pin	1
18	Frame (304) -EU	1	47	Retaining Ring	2
18A	Frame (304) -USA	1	48	Fork Arm (EP) -EU	1
19	Bolt	2	48A	Fork Arm (EP) -USA	1
20	Dust Cover	4	49	Bushing	2
21	Axle	2	50	Pin	2
22	Bearing	2	51	Retaining Ring	2
22A	loop	2	52		
23	Wheel	2	53	Support Plank	2
24	Nut	2	54	Nut	2
25	Pump Unit (EP)	1	55	Screw	2
26	Washer	2	56	Protecting board (Cr-Pl)	1
27	Pin	1	57	Bolt	4
28	Washer	1			
29	R aining	1			

# Lift Table

## 7. Part List of Pump



# Lift Table

No	Description	Quantity	No	Description	Quantity
201	Seal Washer	1	228	O-Ring	1
202	Pump Cylinder	1	229	Adjusting Bolt	1
203	Dust Ring	1	230	Spring	1
204	Y-Seal	1	231	Spindle of Safety Valve	1
205	Pump Piston	1	232	Steel Ball	1
206	Spring	1	233	O-Ring	1
207	Spring Cap	1	234	Seat of Pumping Valve	1
208	Retaining Ring	1	235	Spindle of Pumping Valve	1
209	Joint Plate	2	236	Spring	1
210	Pin	1	237	Seal Washer	1
211E	Pump Body	1	242	Bolt	1
212	Elastic Pin	1	243	Seal Washer	1
213	Spring	1	244E	Retaining Ring	1
214	Strike Pin	1	245E	Washer	1
215	Seal Washer	1	246E	O-Ring	1
216	Axle Sleeve	1	247E	Cup Packing	1
217	O-Ring	2	248E	Piston	1
218	Nut	1	249E	O-Ring	1
219	Screw	1	250E	Piston Rod	1
220	Lever Plate	1	251E	Seal Washer	1
221	Nut	1	252E	Cylinder Cap	1
222	Elastic Washer	1	253E	O-Ring	1
223	Washer	1	254E	Dust Ring	1
224	Bolt With Hole	1	255	Plug	1
225	Bolt With Hole	1	256	Liquid Throttle Sheath	1
226	Nut	1	257	Bolt	1
227	Plug	1	258E	Sleeve	1