

# Instruction Manual

## Hydraulic Drum Truck



**Note: Owner/Operator must read and understand this instruction manual before using the hydraulic drum truck.**

# GENERAL INTRODUCTION

Thank you for choosing our hydraulic drum truck. For your safety and correct operation, please carefully read the manual before use.

Hydraulic drum truck is a special tool to move the drum in short distance. The structure of the whole pallet truck is easy, it is convenient in use, safe and reliable. During the process of using, first place Part No. H106 in the LOWER position, lower the frame to the lowest height, push the hydraulic drum truck, place the drum in the hoop, place Part No. H106 in the ASCENT position, pump the handle, let the frame first holding the drum, then elevate with the drum leaving the ground (The height of the clearance is up to the operator's need). Then place Part No. H106 in the NEUTRAL position, push the hydraulic drum truck, unload the drum in the destined area. Finally, place Part No. H106 in the LOWER position, lower the frame to the lowest height and loose the pawl, drag the hydraulic drum truck out.

(Three positions of setting Part No. H106, please see Fig. 1)

## 1. GENERAL SPECIFICATIONS

Model		HJ365
Capacity	(lbs)	800
Min. Hoop Height	(mm)	390
Max. Hoop Height	(mm)	270
Hoop Radius	(mm)	290
Load Wheel Diameter	(mm)	Ø80×38 Nylon
Steering Wheel Diameter	(mm)	Ø160
Net Weight	(kg)	53

## 2. TO ATTACH HANDLE TO PUMP UNIT

- 2.1 Loosen the setting screw (140H) on the crank link (139H).
- 2.2 Remove three screws (H109) and three spring washers (H110) from the base (103).
- 2.3 Place the handle (H101, H101A, H101(JR), H101(FR)) on the base (103), please note: Feed the rod and chain (H107) through the centre of the base (103) and axle (109).
- 2.4 Insert three screws (H109) with spring washers (H110) into the base (103). Then tighten them securely.
- 2.5 Raise the crank link (139H) and put the pin on rod and chain (H107) into the groove of crank link (139H).

## 3. TO ADJUST RELEASE DEVICE

On the handle of the hydraulic drum truck, you will find the control lever (H106) which can be set in three positions (See Fig. 1):

LOWER=to lower the forks; NEUTRAL=to move the load; ASCENT=to raise the forks.

After assembling the handle, you can adjust the three positions.

- 3.1 First tighten the setting screw (140H) on the crank link (139H) until the LOWER position function works.

- 3.2 If the forks elevate while pumping in the NEUTRAL position, turn the setting screw (140H) clockwise until pumping the handle does not raise the forks and the NEUTRAL position functions correctly.
- 3.3 If the forks descend while pumping in the NEUTRAL position, turn the setting screw (140H) counter-clockwise until the forks do not lower.
- 3.4 If the forks do not descend when the control lever (H106) is in the LOWER position, turn the setting screw (140H) clockwise until raising the control lever (H106) lowers the forks. Then check the NEUTRAL position as per item 3.2 and 3.3.
- 3.5 If the forks do not lift while pumping in the ASCENT position, turn the setting screw (140H) counter-clockwise until the forks elevate while pumping in the ASCENT position. Then check the NEUTRAL and LOWER position as per item 3.2, 3.3 and 3.4.

## 4. MAINTENANCE

### 4.1 OIL

Please check the oil level every six months. Add oil when the forks in the lowered position. Add or change the hydraulic oil according to the table below.

Temperature	Oil
-20°C~+40°C	L-HV46 Hydraulic oil

### 4.2 HOW TO EXPEL AIR FROM THE PUMP UNIT

Air may enter the unit when the seals are replaced. Lift the control lever (H106) to the LOWER position, then move handle up and down for several times.

### 4.3 DAILY CHECK AND MAINTENANCE

Daily check of the hydraulic drum truck can limit wear and tear of the unit. Pay special attention to the wheels, the axles, the handle, the forks and lift, lower, hold control. When the truck is not being used, it should be left in the lowered position.

### 4.4 LUBRICATION

Use motor oil or grease to lubricate all moveable parts.

## 5. SAFETY RULES AND OPERATING INSTRUCTIONS

For safe operation of the Hydraulic Drum Truck please read all warning signs and instructions here and on the hydraulic drum truck prior to use.

### 5.1 Safety rules

To avoid hazardous situations, you should obey the following rules:

#### 1) Fall Hazard

Do not use as a personnel lifting platform or step.

#### 2) Tip-over Hazards

Do not overload the machine.

The machine can be only used on a firm, level surface.

Do not use the machine on the condition of drop-offs, holes, bumps, debris, unstable surfaces or other possible hazardous conditions.

The machine can be only used in the light environment of at least 50LUX.

#### 3) Collision Hazard

Check the work area for overhead obstruction or other possible hazards.

4) Bodily Injury Hazards

Recommended operators to wear safety shoes and gloves.

Do not put the hands and feet under the forks when using the machine.

5) Improper Use Hazard

Never leave a machine unattended with a load.

6) Damaged Machine Hazards

Do not use a damaged or malfunctioning machine.

Conduct a thorough pre-operation inspection prior to each use.

Be sure that all decals are in place and legible.

7) Lifting Hazard

Use proper lifting techniques to load the machine.

5.2 Operating instructions

—— Do not operate the machine unless you have been trained and authorized.

—— Check the machine prior to use, pay special attention to the wheels, the hand assembly, the forks and lift, lower, hold control.

—— The machine shall not be used on gradients, if it is necessary to negotiate slopes, the gradient shall be no more than 2%, and the machine shall be unloaded, the forks shall be facing downgrade.

—— Never place any part of your body in the lifting mechanism or under the forks on load.

—— Do not carry passengers.

—— We advise that operators should wear gloves and safety shoes.

—— Do not overload the machine.

—— The handle shall not be turned right to stop.

—— The machine shall not be used in a potentially explosive atmosphere.

—— When the machine is using in the truck, it can not be loaded extremely heavy goods, so as to bumping the operators or being lost of the control.

—— The machine shall not be used in applications where a risk of unintentional movement exists.

—— Lower the forks to lowest height without load when the machine is not being used.

**6. TROUBLES SHOOTING**

NO	TROUBLE	CAUSE	ACTION
1	The forks do not lift to maximum height.	-Not enough hydraulic oil.	-Add more oil.
2	The forks do not lift up.	-Not enough hydraulic oil. -The oil has impurities. -Discharge valve is out of adjustment. -Air in the hydraulic oil.	-Pour in more filtered oil. -Change the oil. -Adjust the setting screw (140H). -Expel the air.
3	The forks do not descend.	-The rod (102) and the cylinder (159H) are deformed resulting from a seriously unbalanced load. -A part has been broken or been	-Replace the rod (102) or cylinder (159H).  -Repair or replace

		deformed resulting from unbalanced load. -The setting screw (140H) is not in the correct position.	component. -Adjust the setting screw (140H).
4	Leaks	-Seals worn out or damaged. -Some parts may be cracked or worn out.	-Replace seals with new ones. -Check and replace with new ones.
5	The forks descend without being lowered.	-Impurities in the oil cause the discharge valve (B) to fail to close. -Air in the oil. -Seals worn or damaged. -Discharge valve (B) is out of adjustment.	-Replace with filtered oil. -Expel the air. -Replace with new ones. -Adjust the setting screw (140H).
6	The holding claw cannot hold firmly	-The hydraulic system of holding claw leak. - Seals damaged.	-Check the hydraulic system. - Replace seals.

**\*NOTE: DO NOT ATTEMPT TO REPAIR THE HYDRAULIC DRUM TRUCK UNLESS YOU ARE TRAINED AND AUTHORIZED TO DO SO.**

## 7. TRANSPORTATION AND STORAGE OF THE MACHINE

- The machine is packed in wood pallet, one in each wood pallet, each machine is packed with corrugated paper, and each weight is 53kg.
- Pay attention to the balance while hanging and unloading, do not bump, so as to occur fall hazard.
- Pay attention while disassembling the package, person or machine shall not be scraped by the sheet iron of the pack.
- The machine shall be stored in dry room.

## 8. INSTRUCTIONS OF SIGN AND WARNING

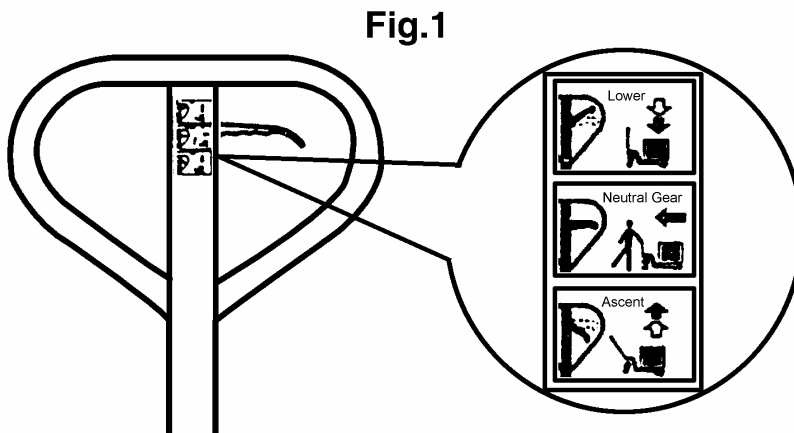


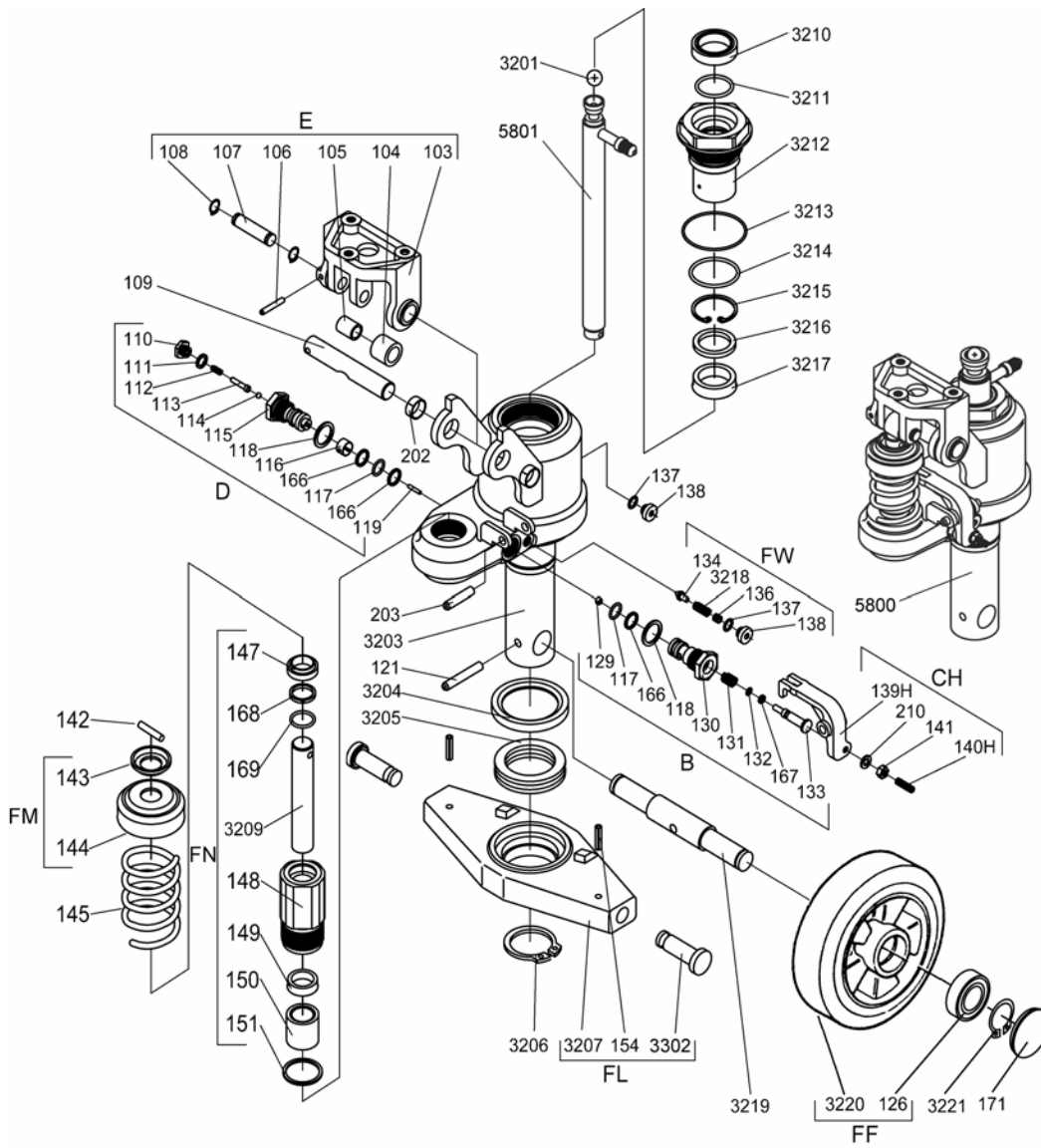
Fig.1 indicates three positions of operating the hydraulic drum truck  
 LOWER=to lower the forks; NEUTRAL=to move the load; ASCENT=to raise the forks.

## 9. DISPOSAL OF WASTE MATERIAL

The main waste material of the hydraulic drum truck is hydraulic oil, after replacing the hydraulic oil, pour it in a special container to have a centralized disposal.

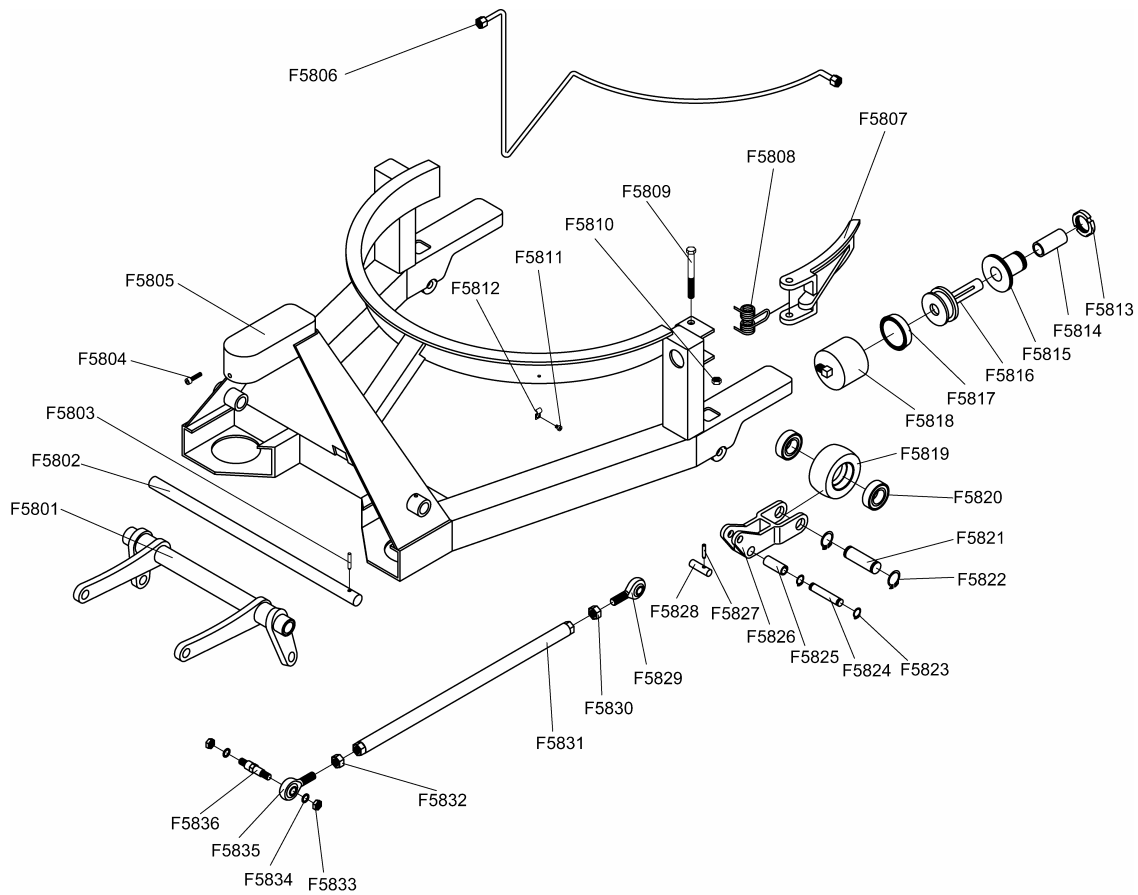
If the whole truck is rejected, taking it to the relevant department to have a centralized disposal.

## Pump Assembly



## Parts List of Pump Assembly

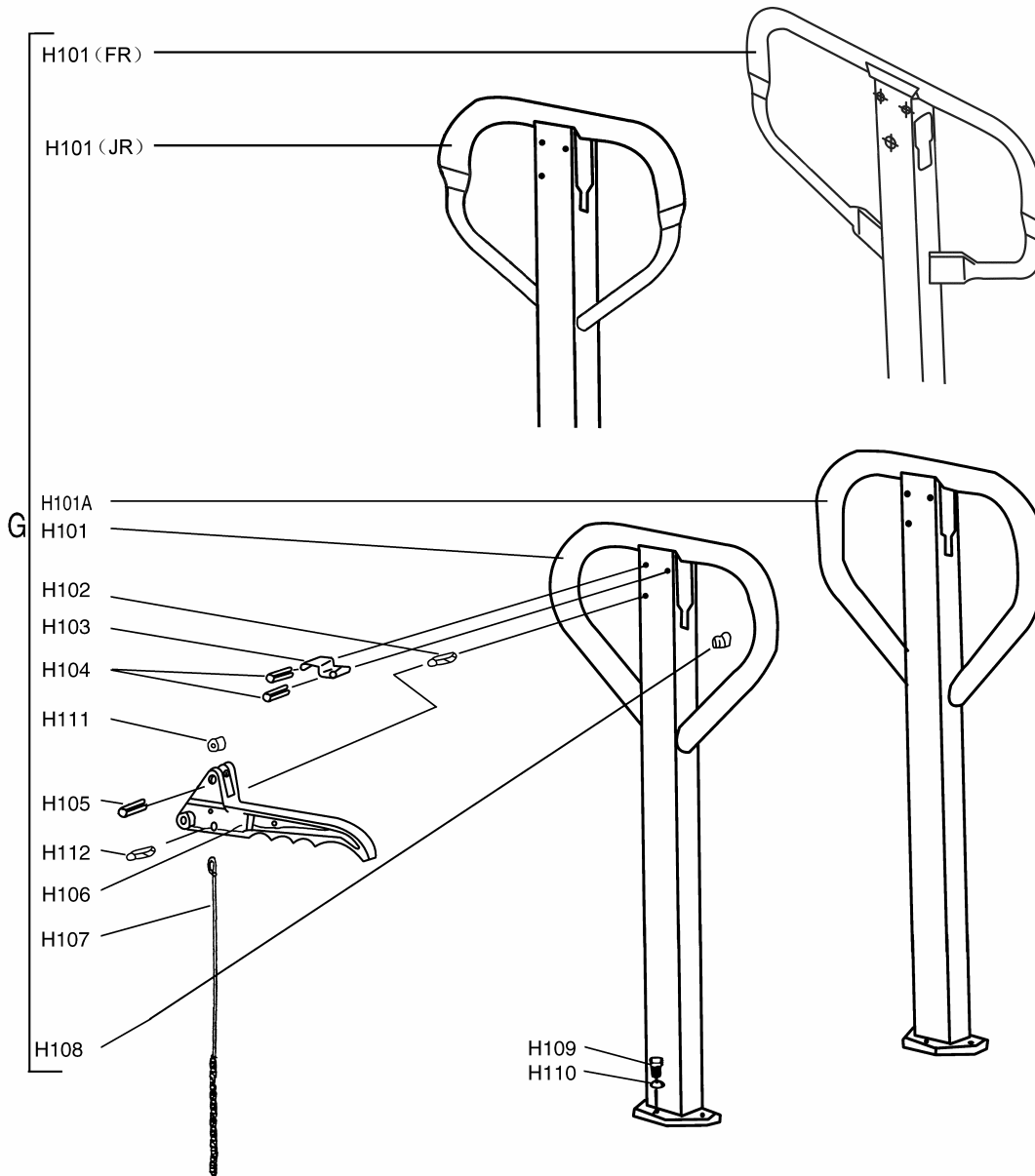
PARTS NO.	DESCRIPTION	Q'TY	PARTS NO.	DESCRIPTION	Q'TY
3201	Steel ball	1	114	Steel ball	1
5801	Rod	1	115	Pressure valve body	1
3203	Pump	1	116	Split ring	1
3204	Dividing bush	1	117	O-ring	2
3205	Bearing	1	118	Washer	2
3206	Retaining ring	1	119	Steel needle	1
3207	Rhombus plate	1	121	Pin	2
3302	Dowel pin	2	126	Bearing	2
3209	Pump rod	1	129	Steel ball	1
3210	Dust proof ring	1	130	Discharge valve body	1
3211	O-ring	1	131	Spring	1
3212	Cylinder	1	132	O-ring	1
3213	O-ring	1	133	Discharge valve shaft	1
3214	O-ring	1	134	Valve taper core	1
3215	Retaining ring	1	136	Pressure regulating screw	1
3216	Washer	1	137	O-ring	2
3217	Seal ring	1	138	Screw	2
3218	Spring	1	139H	Crank link	1
3219	Steering wheel axle	1	140H	Setting screw	1
3220	Steering wheel, Nylon (Ø160)	2	141	Nut	1
3221	Retaining ring	2	142	Parallel pin	1
202	Bushing	2	143	Retaining cover	1
203	Spring pin	1	144	Spring cover	1
210	Spring washer	1	145	Spring	1
103	Base	1	147	Dust proof ring	1
104	Steel roller	1	148	Pump cylinder	1
105	Bushing	1	149	Seal ring	1
106	Pin	1	150	Nylon bushing	1
107	Shaft	1	151	Red copper washer	1
108	Retaining ring	2	154	Pin	2
109	Axle	1	166	Retainer	3
110	Screw	1	167	Retainer	1
111	Washer	1	168	Retainer	1
112	Spring	1	169	O-ring	1
113	Pressure rod	1	171	Dust cover	2



### Parts List of Frame

PARTS NO.	DESCRIPTION	Q'TY	PARTS NO.	DESCRIPTION	Q'TY
F5801	Torsion tube assembly	1	F5819	Nylon load roller	2
F5802	Torsion tube shaft	1	F5820	Bearing	4
F5803	Spring pin	1	F5821	Load roller axle	2
F5804	Setting screw	1	F5822	Retaining ring	4
F5805	Welded frame	1	F5823	Retaining ring	4
F5806	Oil tube assembly	1	F5824	Fixed axle	2
F5807	Holding claw	1	F5825	Bushing	2
F5808	Torsion spring	1	F5826	Wheel frame	2
F5809	Bolt	1	F5827	Spring pin	2
F5810	Locking nut	1	F5828	Axle	2
F5811	Pan screw	1	F5829	Bearing	2
F5812	Plate	1	F5830	Nut	2
F5813	Nut	1	F5831	Pull rod	2
F5814	Copper casing	1	F5832	Nut (rotate to left)	2
F5815	Cover	1	F5833	Self-locking nut	4
F5816	Rod	1	F5834	Plain washer	4
F5817	Seal ring	1	F5835	Bearing (rotate to left)	2
F5818	Welded pump	1	F5836	Screw shaft	2





### Parts List of Handle

PARTS NO.	DESCRIPTION	Q'TY	PARTS NO.	DESCRIPTION	Q'TY
H101	Handle	1	H106	Control lever	1
H101A	Handle	1	H107	Rod and chain	1
H101(JR)	Handle	1	H108	Rubber cushion	1
H101(FR)	Handle	1	H109	Screw	3
H102	Spring pin	1	H110	Spring washer	3
H103	Spring leaf	1	H111	Nylon roller	1
H104	Spring pin	2	H112	Spring pin	1
H105	Spring pin	1			

# Assembly list

Assembly	Description
5800	Pump unit
B	Lowering valve ass'y
CH	Lowering screw ass'y
D	Hydraulic valve ass'y
E	Handle seat ass'y
FF	Nylon steering wheel ass'y
FL	Rhombus plate ass'y
FM	Spring cover ass'y
FN	Pump piston ass'y
FW	Safety valve ass'y
G	Handle ass'y
SH	*Seal kit

\*Note: Seal kit include following parts: 111, 117, 118, 132, 137, 147, 149, 151, 169, 3210, 3211, 3213, 3214, 3217.