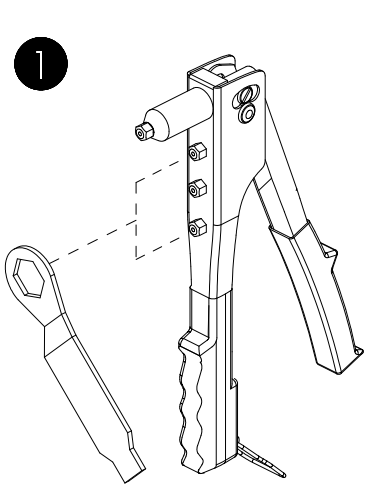
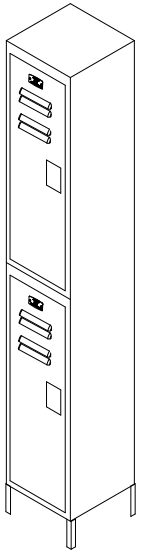




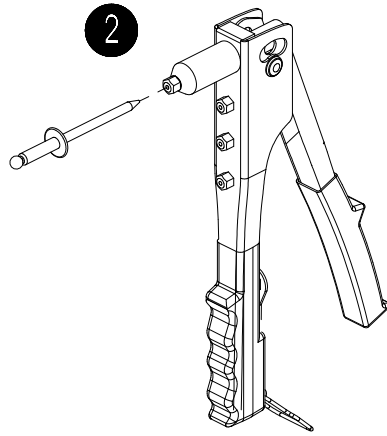
www.globalindustrial.com  
1-800-645-1232

# LOCKER NAME PLATE

## ASSEMBLY INSTRUCTION

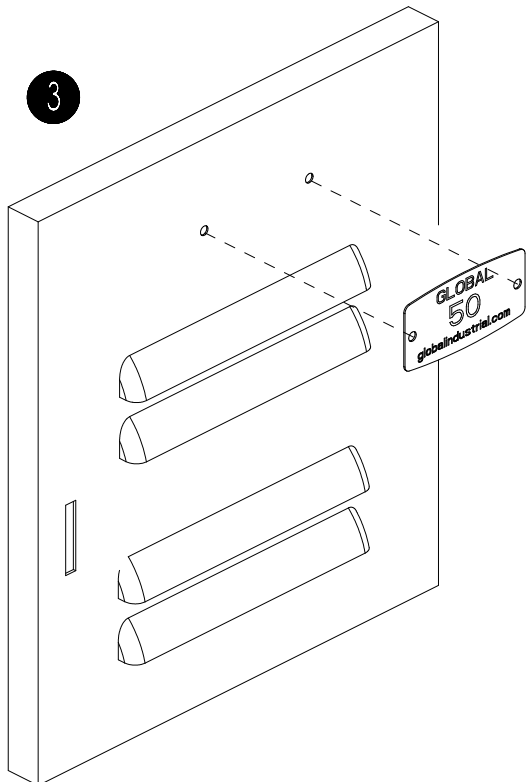
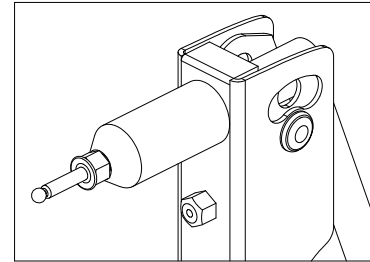


Select the appropriate tip to be used with wrench provided.

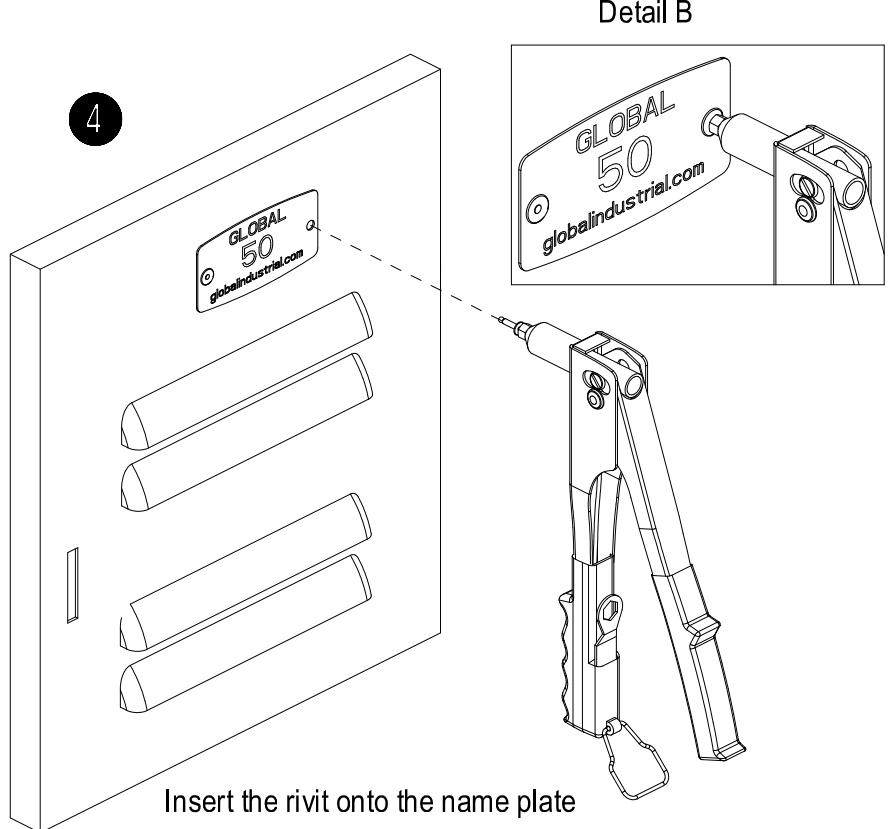


Insert the rivit (needle first) into the tip of the rivit gun.

Detail A



Align the number plate to the locker panel.



Insert the rivit onto the name plate and squeeze handle all the way. release handle fully and then press again until the needle brake off.