

User's manual

Manual del usuario

Manuel de l'utilisateur

Customer Service
US: 1-800-645-2986

Servicio de atención al Cliente
US: 1-800-645-2986

Service à la clientèle
Canada: 888-645-2986

Electronic Lock Surface Mounted Vertical Keypad

Models: 641634

Features:

- 4 Different Operator's Codes:
- 8 Digit Master Code
- 6 Digit Sub-Master Code
- 6 Digit Technician Code
- 4 Digit User Code
- Two Modes: Public and Private
- Two-Color LED for Lock Status
- Mechanical Keyway for Emergency Override w/ Master Key
- Requires (1) Lithium Button Cell Battery (included)

Functions:

Public Mode (Default)

This function is used for short term, multi user applications. While the lock is unlocked, input a 8 digit code to lock the lock. When the lock is unlocked using the same code, the code is erased and a new code can be input by the next user.

Default Settings: Public Mode
User Code: 1111
Master Code: 20050330

Private Mode

User code is set once and can be reused to lock and unlock the unit.

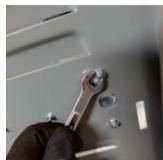
Private Mode	Set: *--Digit Master Code--#--07--# (If Successful: Green light will flash 2 times, unit will beep)
Public Mode	Set: *--Digit Master Code--#--06--# (successful: Green light will flash 2 times, unit will beep)



Electrical Lock

Installation

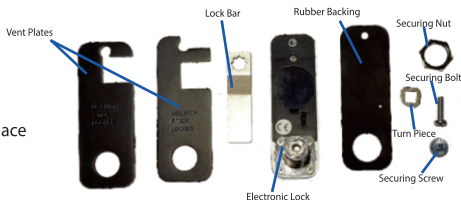
1. Open the locker door that the Electronic Lock will be installed on. Remove the nuts holding the plate that covers the hole in the door.



2. Using the included template, align the large hole on the locker and the hole indicated in the template. Align the edge of the template so that it is parallel with the edge of the locker door. Drill a second hole for the securing screw included in the Electronic Lock. Clean off any metal dust.



3. Remove the locking bar from the lock and the securing nut from the threaded core. Place batteries inside the unit. Replace rubber cover.



4. Insert Turn Piece on the lock so that the lock can only be turned to the left during unlocking. Depending on the size of the door on the locker, a Vent Plate may be necessary. If Plate is necessary, slide the Plate over the rubber mount so that the gap is on the left side.



5. Insert the threaded core through the door of the locker. Reattach the Securing Nut, Lock Bar, and Locking Screw onto the threaded core. Insert the Securing Bolt through the drilled hole and secure the unit through the hole on the top.



The lock should rest flatly against the locker door with the plate.

Setup:

Before programming, choose which mode would be most appropriate for the application: Public Mode or Private Mode

New locks operate with the default user and master codes. A new user and master code must be programmed to prevent the default codes from operating the lock and reducing lock security

Be sure to change the master code after installation

Operating Instructions:

The lock has a 10 number keypad, a * button and a # button.

The lock has four codes that allow you to perform the following actions:

- 1) Master code:
 - Open the lock
 - Change the master code
 - Set/Change/Delete the sub-master and user code
 - Select between Private and Public functions
 - Activate/deactivate technician code
- 2) Sub-master code:
 - Open the lock
 - Change the sub-master code
 - Set/Change/Delete the user code
- 3) User code:
 - Open the lock
 - (Public Mode) - Change the user code
- 4) Technician code:
 - Open the lock without resetting user code (Public Code)
 - Return lock to default settings



Electrical Lock

Master Code Functions:

- 1) Open:
Enter master code
(The user code will be deleted when using master code when the lock is in public mode)
- 2) Programming Master Code
Press *--master code--#--01--#--new master code--#--new master code--#
- 3) Set or change the sub-master Code
Press *--master code--#--04--#--new sub-master code--#
- 4) Delete sub-master code
Press *--master code--#--05--#
- 5) Set or change the User Code (Private Mode)
Press *--master code--#--07--#
6. Set Public Mode from Private Mode
Press *--master code--#--06--#
- 7) Set private mode from Public Mode
Press *--master code--#--07--#
- 8) Set technician code
Press *--master code--#--08--#--6 digit new technician code--#
- 9) Delete technician code
Press *--master code--#--09--#

Sub-Master Code Functions:

- 1) Open:
Enter 8 digit sub-master code
(The user code will be deleted with the sub master code)
- 2) Set the sub-master Code
Press *--sub-master code--#--04--#--new sub-master code--#
(re-locks automatically after 3 seconds)

User Code Functions:

Private Mode:

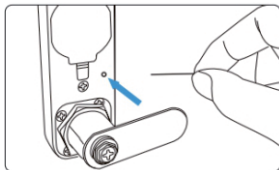
- 1) Open:
Enter 4 digit user code
- 2) Change the User Code
Close lock, Enter 4 digit code

Public Mode:

- 1) Open Lock

Technician Code Functions:

- 1) Open:
Enter 6 digit technician code - User code will not be deleted (in public mode)
- 2) Initialize:
*-- 99 -- #-- press reset button
Enter the operation and press the reset button on the back of lock within 8 seconds.
The green light flash with and the lock will beep and will go back to default settings



Electrical Lock

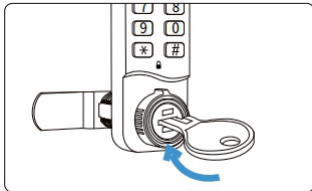
Additional Functions

Penalty time:

When the password is incorrectly entered 5 times continuously, the lock will be automatically locked for 5 minutes

Mechanical Lock Opening:

Open the protective cover, insert the master key to emergency opening, the lock code still keep the previous setting



Color signals

Green light flashes when: 1) unlocked successfully 2) programming successful
Red light flashes when: 1) wrong code entered 2) low power alarm

Changing the Battery

1. Remove lock from locker installation.
2. Take out the batteries.
3. Put in the new batteries and test
4. Reinstall lock back into place.