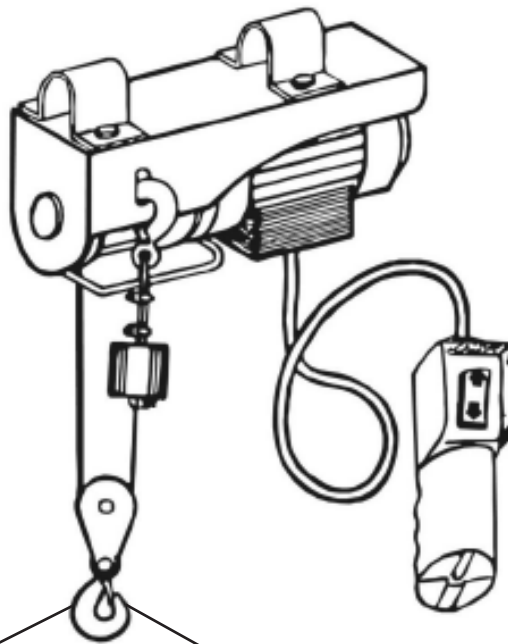


Assembly Instructions	Instrucciones de Ensamblaje	Directives d'assemblage
Customer Service US: 1-800-645-2986	Servicio de atención al Cliente US: 1-800-645-2986	Service à la clientèle Canada: 888-645-2986

ELECTRIC HOIST

ASSEMBLY AND OPERATING INSTRUCTIONS



Model no.	Capacity
298640	440 lb.
298641	880 lb.
298642	1500 lb.
298643	2000 lb.



Read carefully and understand all details before operating. Failure to follow the safety rules and other basic safety precautions may result in serious personal injury.

Product Specifications pg. 2
 General Safety Rules pg. 2
 Personal Safety pg. 3
 Service pg. 3
 Specific Safety Rules pg. 4

Assembly and Operating Instructions pg. 6
 Inspection, Maintenance and Cleaning pg. 7
 Assembly Diagram pg. 8
 Parts List pg. 9
 Warranty Info pg. 10

PRODUCT SPECIFICATIONS

Model no.	298640	298641	298642	298643
Rated Voltage	110V 60Hz			
Rated Capacity	220lb single line; 440lb double line	440lb single line; 880lb double line	750lb single line; 1500lb double line	1000lb single line; 2000lb double line
Lifting Height	39.4ft single line; 19.7ft double line			
Lifting Speed	29.5'/min single line; 14.7'/min double line			
Power	450W	775W	1491W	1678W
Cable length	40ft			
Cable diameter	0.12" anti-twist	0.14" anti-twist	0.177" anti-twist	7/32" anti-twist
Duty cycle	S3 20%-10min			
Resister Cable	≥1540lbs	≥2200lbs	≥3000lbs	≥4000lbs

GENERAL SAFETY RULES



WARNING!

READ AND UNDERSTAND ALL INSTRUCTIONS.

Failure to follow all instructions listed below may result in electric shock, fire, and/or serious injury.

WORK AREA

- Keep your work area clean and well-lit. Cluttered benches and dark areas invite accidents.
- Do not operate power tools in explosive atmospheres, such as in the presence of flammable liquids, gases, or dust. Power tools create sparks which may ignite the dust or fumes.
- Keep bystanders, children, and visitors away while operating a power tools. Distractions can cause you to lose control. Protect others in the work area from debris such as chips and sparks. Provide barriers or shields as needed.

ELECTRICAL SAFETY

- Grounded tools must be plugged into an outlet properly installed and grounded in accordance with all codes and ordinances. Never remove the grounding prong or modify the plug-in any way. Do not use any adapter plugs. Check with a qualified electrician if you are in doubt as to whether the outlet is properly grounded. If the tools should electrically malfunction or break down, grounding provides a low resistance path to carry electricity away from the user.
- Double insulated tools are equipped with a polarized plug (one blade is wider than the other). This plug will fit in a polarized outlet only one way. If the plug does not fit fully in the outlet, reverse the plug. If it still does not fit, contact a qualified electrician to install a polarized outlet. Do not change the plug-in any way. Double insulation eliminates the need for the three wire grounded power cord and grounded power supply system.
- Avoid body contact with grounded surfaces such as pipes, radiators, ranges, and refrigerators. There is an increased risk of electric shock if your body is grounded.
- Do not expose power tools to rain or wet conditions. Water entering a power tool will increase the risk of electric shock.
- Do not abuse the power cord. Never use the power cord to carry the tools or pull the plug from an outlet. Keep the power cord away from heat, oil, sharp edges, or moving parts. Replace damaged power cords immediately. Damaged power cords increase the risk of electric shock.
- When operating a power tool outside, use an outdoor extension cord marked "W-A" or "W". These extension cords are rated for outdoor use, and reduce the risk of electric shock.

PERSONAL SAFETY

- Stay alert. Do not use a power tool while tired or under the influence of drugs, alcohol, or medication. A moment of inattention while operating power tools may result in serious personal injury.
- Dress properly. Do not wear loose clothing or jewelry. Contain long hair. Keep your hair, clothing, and gloves away from moving parts. Loose clothes, jewelry, or long hair can be caught in moving parts.
- Avoid accidental starting. Be sure the power switch is off before plugging in. Carrying power tools with your finger on the power switch, or plugging in power tools with the power switch on, invites accidents.
- Remove adjusting keys or wrenches before turning the power tool on. A wrench or a key that is left attached to a rotating part of the power tool may result in personal injury.
- Do not overreach. Keep proper footing and balance at all times. Proper footing and balance enables better control of the power tool in unexpected situations.
- Use safety equipment. Always wear eye protection, dust mask, non-skid safety shoes, hard hat, and/or hearing protection must be used for appropriate conditions.
- Do not force the tool. Use the correct tool for your application. The correct tool will do the job better and safer at the rate for which it is designed.
- Do not use the power tool if the power switch does not turn on or off. Any tool that can not be controlled with the power switch is dangerous and must be replaced.
- Disconnect the power cord plug from the power source before making any adjustments, changing accessories, or storing the tool. Such preventive safety measures reduce the risk of starting the tool accidentally.
- Store idle tools out of reach of children and other untrained persons. Tools are dangerous in the hands of untrained users.
- Maintain tools with care. Keep cutting tools sharp and clean. Properly maintained tools with a sharp cutting edge are less likely to bind and are easier to control. Do not use a damaged tool. Tag damaged tools "Do not use" until repaired.
- Check for misalignment or loose parts, breakage of parts, and any other condition that may affect the tool's operation. If damaged, have the tool serviced before using.
- Use only accessories that are recommended by the manufacturer for your model. Accessories that may be suitable for one tool may become hazardous when used on another tool.

SERVICE

- Tool service must be performed only by qualified repair personnel. Service or maintenance performed by unqualified personnel could result in a risk of injury.
- When servicing a tool, use only identical replacement parts. Follow instructions in the "Inspection, Maintenance and Cleaning" section of this manual. Use of unauthorized parts or failure to follow maintenance instructions may create a risk of electric shock or injury.

SPECIFIC SAFETY RULES

- Maintain labels and nameplates on the hoist. These carry important information. If unreadable or missing, contact the distributor for a replacement.
- Always wear safety impact eye goggles and heavy work gloves when using the hoist. Using personal safety devices reduce the risk for injury.
- Maintain a safe working environment. Keep the work area well lit. Make sure there is adequate surrounding workspace. Always keep the work area free of obstructions, grease, oil, trash, and other debris. Do not use a power tool in areas near flammable chemicals, dusts, and vapors. Do not use this product in a damp or wet location.
- Always maintain a firm grip on the tool.
- Always keep the extension cord away from moving parts on the tool.
- Avoid unintentional starting. Make sure you are prepared to begin work before turning on the hoist.
- Do not force the hoist. This tool will do the work better and safer at the speed and capacity for which it was designed.
- Never use the hoist to lift people or animals. Do not support a load over or around people or animals.
- Always leave a minimum of 4 wraps of cable on the drum. The cable fastener on this wire rope hoist is not rated for the maximum capacity of the hoist.
- Do not exceed the maximum lift capacity.
- Do not stand under hoisted loads.
- Do not operate the hoist in wet conditions. Do not allow the hoist to freeze.
- If pushing the lift button continually does not have any affect, do not continue. This is a sign that the load exceeds the maximum capacity.
- Never adjust the cable or work on the hoist when it is plugged into an outlet.
- Always inspect the cable and hook prior to use. If the cable is damaged in any way, do not use it. Hooks that are bent, worn or whose openings are enlarged beyond normal size should not be used.
- If the hoist is stopped during the lowering of a load, it is normal for the load to drop a few inches more due to inertia.
- The hoist motor does not have an overload cut-out. If you are unable to hoist a load and the load is under the maximum lift capacity, stop the hoist and allow the motor to cooldown before trying again.
- Make sure the cable is correctly wrap around the wheel. (See Figure A)



Figure A

- Do not leave load suspended in the air unattended.
- Do not allow a load to bear against the hook latch. Allowing a load to bear against the hook latch can result in loss of load.
- Do not allow load to swing or twist while hoisting.
- Do not use cable as a sling or wrap cable around a load.

! WARNING!

People with pacemakers should consult their physician(s) before using this product. Operation of electrical equipment in close proximity to a heart pacemaker could cause interference or failure of the pacemaker.

GROUNDING

! WARNING!

Improperly connecting the grounding wire can result in the risk of electric shock. Check with a qualified electrician if you are in doubt as to whether the outlet is properly grounded. Do not modify the power cord plug provided with the tool. Never remove the grounding prong from the plug. Do not use the tool if the power cord or plug is damaged. If damaged, have it repaired by a service facility before use. If the plug will not fit the outlet, have a proper outlet installed by a qualified electrician.

GROUNDED TOOLS: TOOLS WITH 3-PRONG PLUGS

- Tools marked with "Grounding Required" have a 3-wire cord and 3-prong grounding plug. The plug must be connected to a properly grounded outlet. If the tool should electrically malfunction or break down, grounding provides a low resistance path to carry electricity away from the user, reducing the risk of electric shock. (See Figure B)
- The grounding prong in the plug is connected through the green wire inside the cord to the grounding system in the tool. The green wire in the cord must be the only wire connected to the tool's grounding system and must never be attached to an electrically "live" terminal. (See Figure B)
- Your tool must be plugged into an appropriate outlet, properly installed and grounded in accordance with all codes and ordinances. The plug and outlet should look like those in the following illustration. (See Figure B)

DOUBLE INSULATED TOOLS: TOOLS WITH TWO PRONG PLUGS

- Tools marked "Double Insulated" do not require grounding. They have a special double insulation system which satisfies OSHA requirements and complies with the applicable standards of Underwriters Laboratories Inc., the Canadian Standard Association, and the National Electrical Code. (See Figure C)
- Double insulated tools may be used in either of the 120 volt outlets shown in the following illustration. (See Figure C)

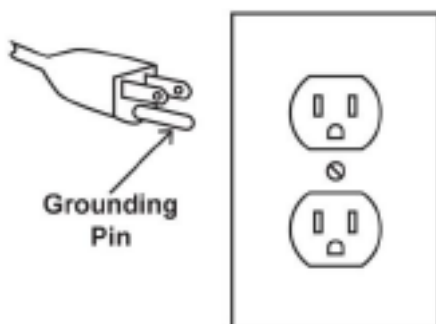


Figure B

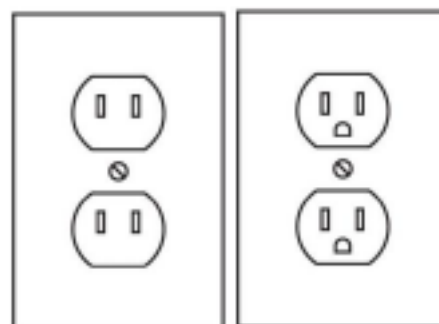


Figure C

EXTENSION CORDS

- Grounded tools require a 3-wire extension cord. Double Insulated tools can use either a 2- or 3-wire extension cord.
- As the distance from the supply outlet increases, you must use a heavier gauge extension cord. Using extension cords with inadequate sized wire causes a serious drop in voltage, resulting in loss of power and possible tool damage.
- The smaller the gauge number of the wire, the greater the capacity of the cord. For example, a 14-gauge cord can carry a higher current than a 16-gauge cord.
- When using more than one extension cord to make up the total length, make sure each cord contains at least the minimum wire size required.
- If you are using one extension cord for more than one tool, add the nameplate amperes and use the sum to determine the required minimum cord size.
- If you are using an extension cord outdoors, make sure it is marked with the suffix "W-A" ("W" in Canada) to indicate it is acceptable for outdoor use.
- Make sure your extension cord is properly wired and in good electrical condition. Always replace a damaged extension cord or have it repaired by a qualified electrician before using it.
- Protect your extension cords from sharp objects, excessive heat, and damp or wet areas.

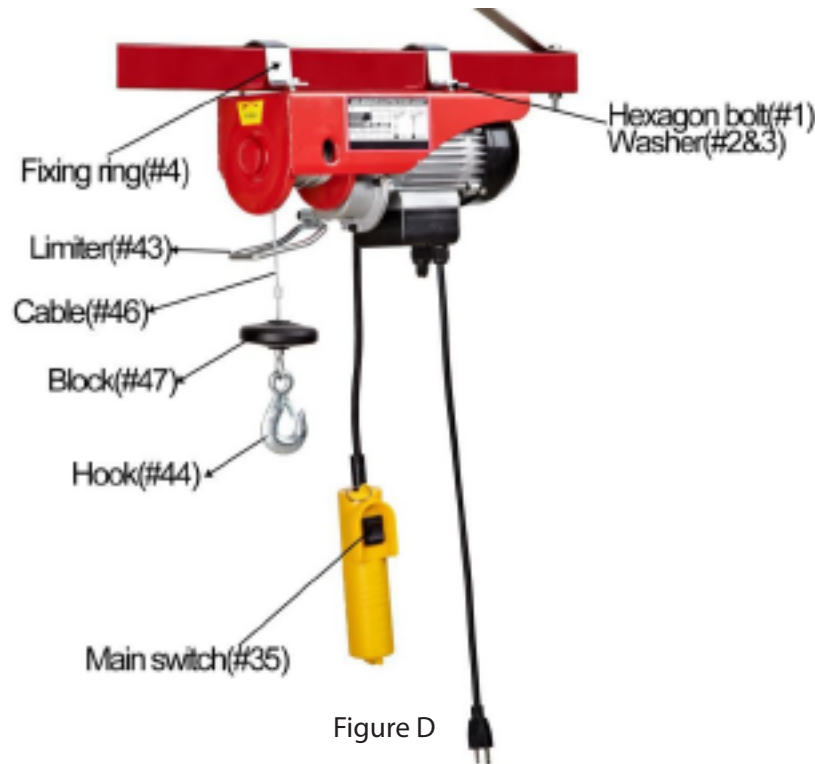


Figure D

ASSEMBLY AND OPERATING INSTRUCTIONS



WARNING! Unplug the hoist before set-up.

1. This hoist is designed to be attached to a beam or steel pipe and is securely held in place by both of the Fixing rings(#4). (See Figure D)

Note: The beam or steel pipe must be capable of carrying several times the weight of the hoist and its designated maximum capacity. If in doubt, consult a registered engineer and building code.

Note: Make sure the area underneath or around the hoist is clear of obstructions. Do not hoist loads over people or animals.

2. After determining the location of the hoist, make sure the beam or pipe is the proper size to fit inside of the Fixing rings(#4). Have a second person hold the top of the hoist flush against the beam or pipe. Line up the holes on each Fixing rings(#4) with the holes on the top of the hoist. Thread in the two Hexagon bolts(#1) and Washers(#2&3) per Fixing rings(#4) to secure the hoist to the beam or steel pipe. Check that it is secure. Before each use, check that the Fixing rings(#4) are securely fastened to the hoist.
3. Ideally, the hoist needs to be set-up within a reachable distance to a 3-prong power outlet without the need of an extension cord. However, extension cords are safe and acceptable when properly used.



WARNING!

As illustrated in FIGURE D, the cable(#46) must flow through the cable limiter(#43), and the block(#47) must be securely attached to the end of the cable(#46).

4. Plug in the unit and press the switch(#35) toward the “down” position to lower the hook(#44) to the load.
5. When connecting the hook(#44) to the load, you must be sure that the connection point on the load is capable of holding the weight of the entire load. If you are not sure, use a separate cable (not included) that is rated above maximum lift load capacity, to surround the unit and tie it off securely. Then, attach the load is completely inside of the hook and safety tab on the hook(#44) and the load is centered under the hoist. The safety tab on the hook must latch or close over the connection point or cable or the load may fall causing serious damage and injury.
6. Make sure no people or animals are near the immediate area. Never support a load over people or animals.
7. Standing clear, push the switch(#35) toward the “up” position. Slowly raise the load only enough to clear the floor or support and check to be sure the load is securely fastened. Proceed only after you are ensured the load is secure and free of all obstructions. If the hoist refuses to lift the load, you might have exceeded maximum lift capacity. If you are under the maximum capacity and the hoist stops on its own, release the lift switch and stay clear while the motor has sufficient time to cool down. Then, resume the process.
8. When you are ready to lower the load, press the switch(#35) toward the “down” position.
9. When the load is completely on the ground, keeping clear of it, shake or move the load to make sure it is sitting firmly on the ground. Then, remove the hook(#44) from the load.
10. Push the switch(#35) toward the “up” position and bring the block(#47) up to within a few inches of the limiter(#43).
11. When finished, unplug the unit.

INSPECTION, MAINTENANCE AND CLEANING

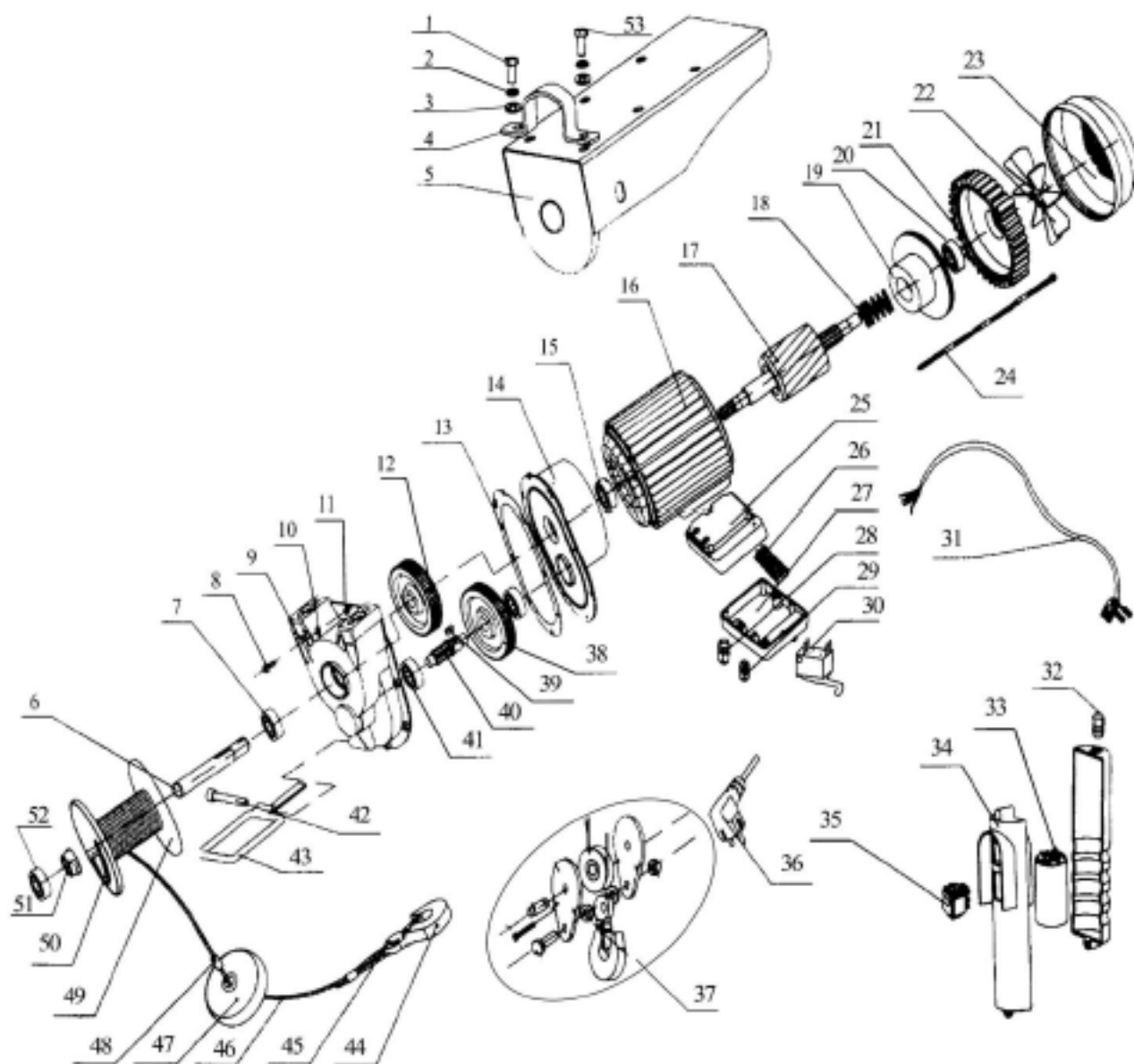


WARNING!

Before each use, inspect the general condition of the hoist. Check for loose screws, misalignment or loose parts, cracked or broken parts, damaged electrical wiring, and any other condition that may affect its safe operation. If abnormal noise or vibration occurs, have the problem corrected before further use. Do not use damaged equipment.

1. Wipe the hoist down with a lint free cloth.
2. Check the cable for tears, excessive wearing, or damage. If you find any, do not use the hoist until the cable is replaced by a qualified technician. Only use genuine replacement cable(#46). Do not substitute rope or any other type of cable.
3. Periodically lubricate the cable with a light oil.

Assembly Diagram



PARTS LIST

No.	Description	No.	Description
1	hexagon bolt	28	holding fixture
2	spring washer	29	holding fixture
3	flat washer	30	limit switch
4	fixing ring	31	control cable
5	support structure	32	holding fixture
6	rope roll shaft	33	capacitor
7	bearing	34	handle
8	hexagon fillister head screw	35	main switch
9	gearcase	36	power cord
10	spring washer	37	pulley hook assembly
11	flat washer	38	gearwheel
12	gearwheel	39	flat key
13	cushion board	40	gear shaft
14	front cover	41	bearing
15	bearing	42	hexagon fillister head screw
16	stator with shell	43	limiter
17	rotor	44	hook
18	brake spring	45	rope thimble
19	brake component	46	wire rope
20	bearing	47	block
21	back end cover	48	aluminum pipe
22	fan blade	49	rope roll
23	fan cover	50	wedge
24	hexagon bolt	51	bushing
25	junction box	52	bearing
26	wiring terminal	53	hexagon bolt
27	terminal cover		

PLEASE READ THE FOLLOWING CAREFULLY

The manufacturer and /or distributor has provided the parts list and assembly diagram in this manual as a reference tool only. Neither the manufacturer or distributor makes any representation or warranty of any kind to the buyer that he or she is qualified to make any repairs to the product, or that he or she is qualified to replace any parts of the product. In fact, the manufacturer and/or distributor expressly states that all repairs and parts replacements should be undertaken by certified and licensed technicians and not by the buyer. The buyer assumes all risk and liability arising out of his or her repairs to the original product or replacement parts thereto. Or arising out of his or her installation of replacement parts thereto.

NOTE: Some parts are listed and shown for illustration purposes only, and are not available individually as replacement parts.



Over 1,000,000 products. Industrial strength service.
We can supply that.

REGISTER ONLINE AT

<http://www.globalindustrial.com/wr> or <http://www.globalindustrial.ca/wr>

Global Limited 1 Year Warranty

1. LIMITED WARRANTY

Global Equipment Company Inc. (DBA Global Industrial) ("Global") hereby warrants to you, the original purchaser and end user ("you" or "your"), that the products that you purchased which accompany this Limited Warranty ("Products") shall be free from defects in materials and workmanship under normal use consistent with the accompanying documentation for 1 year commencing upon the date of purchase (the "Warranty Period").

Global will repair or replace any Product determined to be defective and which has been returned, as set forth in section 3 herein, to Global. A Product may be replaced with a new or used product and/or current or prior revision. Where Global determines in its sole judgment that repair or replacement of such Product is not reasonable, Global will keep the non-conforming Product and refund to you the amount you paid for such Product. Returned Products shall be subject to the balance of the Warranty Period otherwise applicable. Any reconditioned parts used by Global shall be subject to all the same provisions as otherwise applicable to new parts.

THE FOREGOING DESCRIBES THE SOLE LIABILITY OF GLOBAL, AND YOUR SOLE REMEDY, FOR ANY BREACH OF WARRANTY. IF YOU DO NOT AGREE WITH THE TERMS OF THIS LIMITED WARRANTY, YOU MUST RETURN THE PRODUCTS UNUSED AND IN THEIR ORIGINAL PACKAGING WITHIN THREE (3) DAYS AND YOUR PURCHASE PRICE WILL BE REFUNDED.

2. WARRANTY EXCLUSIONS AND LIMITATION OF LIABILITY

This Limited Warranty does not cover: (i) defects or damages resulting from acts of God, casualty, accident, misuse or abuse, overloading, exceeding the recommended weight capacity, neglect, alterations, modification, service or repair by other than Global or its independent third party service providers, including without limitation by you; (ii) improper assembly or installation or de-installation, operation or maintenance, improper connections with peripherals or other causes not arising out of defects in the materials or workmanship of Products; (iii) any Product for which the warranty sticker has been removed, modified or defaced; (iv) shipping containers, batteries, cabinets, media, software or accessories; (v) normal wear and tear; (vi) damage to or loss of repaired or replaced Products during shipping by Global except when such damage or loss is caused by poor or inadequate packaging by Global; or (vii) Products purchased outside the United States or Canada.

UNDER NO CIRCUMSTANCES WILL GLOBAL BE LIABLE FOR ANY LOSS OF USE, INTERRUPTION OF BUSINESS OR ANY INDIRECT, SPECIAL, INCIDENTAL, PUNITIVE OR CONSEQUENTIAL DAMAGES OF ANY KIND (INCLUDING LOST PROFITS) REGARDLESS OF THE FORM OF ACTION WHETHER IN CONTRACT, TORT (INCLUDING NEGLIGENCE), STRICT PRODUCT LIABILITY OR OTHERWISE, EVEN IF GLOBAL HAS BEEN ADVISED OF THE POSSIBILITY OF SUCH DAMAGES. IN NO EVENT SHALL THE TOTAL LIABILITY OF GLOBAL HEREUNDER EXCEED THE GREATER OF \$50 OR THE AMOUNT YOU ACTUALLY PAID FOR THE PRODUCT GIVING RISE TO SUCH LIABILITY, REGARDLESS OF THE CAUSE OF ACTION, IN CONTRACT, TORT, STRICT LIABILITY OR OTHERWISE. NOT ALL JURISDICTIONS ALLOW SUCH LIMITATIONS OF DAMAGES SO THE FOREGOING LIMITATIONS MAY NOT APPLY TO YOU.

3. PROCEDURE FOR WARRANTY SERVICE

Prior to returning any Products to Global for warranty service, you must first contact Global, by telephone at (800) 645-2986 (US) or (888) 645-0878 (Canada) to confirm that such Products are covered by this Limited Warranty. If such Products are so covered, you shall obtain from Global a return materials authorization ("RMA") number and shipping instructions prior to any shipment of such Products to Global, and you must include such RMA number with any corresponding Product shipment, along with a true and correct copy of the original receipt showing the date of Product purchase by you, and a detailed, written description of any associated Product problems.

Please note that you are responsible for all shipping charges incurred in returning an item for exchange or repair. Global shall pay for return shipping of repaired and/or replaced Products to addresses within the United States and Canada only, and return shipments to all other addresses outside of the United States or Canada is your responsibility. If Global determines that any Product is not covered by this Limited Warranty, you must pay all parts, labor charges and return shipping for such Product.

4. WARRANTY DISCLAIMER AND LIMITATIONS

EXCEPT AND TO THE EXTENT EXPRESSLY SET FORTH ABOVE THERE ARE NO WARRANTIES, EXPRESS OR IMPLIED, INCLUDING BUT NOT LIMITED TO, ANY WARRANTIES OF MERCHANTABILITY OR FITNESS FOR A PARTICULAR PURPOSE AND GLOBAL EXPRESSLY DISCLAIMS ALL WARRANTIES NOT STATED HEREIN.

EXCEPT AND TO THE EXTENT EXPRESSLY SET FORTH ABOVE, THE PRODUCTS ARE PROVIDED ON AN "AS IS" BASIS, AND GLOBAL MAKES NO ADDITIONAL WARRANTIES, EXPRESS, IMPLIED, ARISING FROM COURSE OF DEALING OR USAGE OF TRADE, OR STATUTORY, AS TO THE PRODUCTS OR ANY MATTER WHATSOEVER. THIS IS A LIMITED WARRANTY AND IS THE ONLY WARRANTY MADE BY GLOBAL. THE AGENTS, EMPLOYEES, DISTRIBUTORS, AND DEALERS OF GLOBAL ARE NOT AUTHORIZED TO MAKE MODIFICATIONS TO THIS LIMITED WARRANTY, OR MAKE ADDITIONAL WARRANTIES BINDING ON GLOBAL. ACCORDINGLY, ADDITIONAL STATEMENTS SUCH AS DEALER ADVERTISING OR PRESENTATION, WHETHER ORAL OR WRITTEN, DO NOT CONSTITUTE WARRANTIES BY GLOBAL AND SHOULD NOT BE RELIED UPON. GLOBAL DOES NOT WARRANT THAT THE PRODUCTS WILL OPERATE WITHOUT FAILURE, OR THAT THE PRODUCTS WILL MEET YOUR NEEDS OR EXPECTATIONS. NOT ALL JURISDICTIONS ALLOW SUCH WARRANTY LIMITATIONS SO THE FOREGOING LIMITATIONS MAY NOT APPLY TO YOU.

5. CHOICE OF LAW AND JURISDICTION

FOR PURCHASES WITHIN THE US - This Limited Warranty shall be subject solely to the laws of the State of New York as applied to contracts entered into in the State of New York between New York residents. Any dispute arising hereunder shall be subject to the sole jurisdiction of the State and Federal Courts located in Nassau County, New York. The parties hereby consent to the personal jurisdiction of such courts.

FOR PURCHASES WITHIN CANADA - This Limited Warranty shall be subject solely to the laws of the Province of Ontario. Any dispute arising hereunder shall be subject to the sole jurisdiction of Ontario, Canada. The parties hereby consent to the personal jurisdiction of such courts.

REGISTRARSE EN LÍNEA EN

Garantía global limitada de 1 año

<http://www.globalindustrial.com/wr> or <http://www.globalindustrial.ca/wr>

1. GARANTÍA LIMITADA

Global Equipment Company Inc. (DBA Global Industrial) ("Global") por la presente garantiza al comprador original y usuario final ("usted" o "su"), que los productos adquiridos por usted que incluyen esta Garantía limitada ("Productos") se considerarán libres de defectos respecto de sus materiales y mano de obra en condiciones normales de uso de conformidad con la documentación adjunta durante 1 año a partir de la fecha de compra (el "Plazo de duración de la garantía").

Global reparará o reemplazará todo producto calificado como defectuoso y que hubiere sido devuelto a Global, según lo establecido en la sección 3 de la presente garantía. Un Producto puede ser reemplazado por un producto nuevo o usado y/o quedar sujeto a una revisión actual o previa. En los casos que Global establezca, a su exclusivo criterio, la inviabilidad de la reparación o el reemplazo de dicho Producto, Global conservará el Producto no conforme y le reembolsará a usted el monto abonado por dicho Producto. De ser aplicable, los Productos devueltos estarán sujetos al tiempo restante del "Plazo de Duración de la Garantía. Todas las piezas reacondicionadas utilizadas por Global estarán también sujetas a dichas disposiciones mencionadas anteriormente, aplicables de igual modo a las piezas nuevas, si correspondiere

LA CLÁUSULA MENCIONADA ANTERIORMENTE DESCRIBE LA RESPONSABILIDAD EXCLUSIVA DE GLOBAL, Y SU ÚNICO RECURSO, POR CUALQUIER INCUMPLIMIENTO DE LA PRESENTE GARANTÍA. SI USTED NO ESTÁ DE ACUERDO CON LOS TÉRMINOS Y CONDICIONES DE LA PRESENTE GARANTÍA LIMITADA, USTED DEBERÁ DEVOLVER LOS PRODUCTOS SIN HABERLOS UTILIZADO Y EN SU EMBALAJE ORIGINAL EN EL PLAZO DE TRES (3) DÍAS Y USTED RECIBIRÁ EL REEMBOLSO DEL DINERO DE SU COMPRA.

2. EXCLUSIONES DE LA PRESENTE GARANTÍA Y LIMITACIÓN DE RESPONSABILIDAD

La presente Garantía limitada no cubre los siguientes supuestos: (i) defectos o daños causados por fuerza mayor, accidentes, uso inapropiado o excesivo, sobrecarga que supere la capacidad del peso recomendado, negligencia, alteraciones, modificación, reparación o mantenimiento realizados por proveedores técnicos independientes o ajenos a Global, entre los que se incluyen las siguientes acciones realizadas por usted; (ii) ensamble o instalación o desinstalación inadecuados, operación o mantenimiento, conexiones periféricas, funcionamiento o mantenimiento incorrectos, o cualquier otra causa que no surja de un defecto en los materiales o en la mano de obra del Producto; (iii) todo Producto que no contenga el sticker de garantía o cuando dicho sticker haya sido retirado, modificado o esté dañado; (iv) contenedores de envío, baterías, gabinetes, medios, software o accesorios; (v) desgaste normal por el paso del tiempo; (vi) daño o pérdida de los Productos reparados o reemplazados durante el envío por parte de Global en los casos en que dicho daño o pérdida se hubieren producido por un mal o inadecuado embalaje por parte de Global; o (vii) Productos adquiridos fuera de los Estados Unidos o Canadá.

EN NINGÚN CASO GLOBAL SERÁ RESPONSABLE POR LA PÉRDIDA DE USO, INTERRUPTIÓN DE NEGOCIOS O CUALQUIER TIPO DE DAÑO INDIRECTO, ESPECIAL, INCIDENTAL, PUNITIVO O CONSECUENTE (INCLUIDA LA PÉRDIDA DE GANANCIAS), INDEPENDIEMENTE DEL TIPO DE ACCIÓN LEGAL, YA SEA EMANADOS DE UN CONTRATO, DE UN ACTO ILÍCITO (INCLUIDA LA CULPA), RESPONSABILIDAD OBJETIVA SOBRE EL PRODUCTO U OTROS. LO ANTERIOR SE APLICARÁ AÚN EN LOS CASOS EN QUE GLOBAL HAYA SIDO ADVERTIDA SOBRE LA POSIBILIDAD DE DICHOS DAÑOS. EN NINGÚN CASO, EN VIRTUD DE LA PRESENTE GARANTÍA, EL MONTO INDEMNIZATORIO POR RESPONSABILIDAD DE GLOBAL PODRÁ EXCEDER LOS USD 50.00 O LA SUMA QUE USTED HAYA PAGADO POR EL PRODUCTO OBJETO DE DICHA RESPONSABILIDAD, INDEPENDIEMENTE DE LA CAUSAL DE LA ACCIÓN LEGAL. POR EL CONTRATO, ACTO ILÍCITO, RESPONSABILIDAD OBJETIVA U OTRAS. DADO QUE NO EN TODAS LAS JURISDICCIONES RIGEN DICHAS LIMITACIONES EN LAS INDEMNIZACIONES, LAS LIMITACIONES ANTERIORES PUEDEN NO SER APLICABLES EN SU CASO.

3. PROCEDIMIENTO PARA EL SERVICIO DE GARANTÍA

Antes de devolver un Producto a Global para obtener el servicio de garantía, Usted debe contactar a Global, por teléfono al (800) 645-2986 (Estados Unidos) ó (888) 645-0878 (Canadá) a los fines de confirmar que dicho Producto esté contemplado en la presente Garantía Limitada. Si dicho Producto estuviera cubierto por la Garantía, usted recibirá un número de autorización de devolución de materiales de Global (en adelante, "ADM") y las instrucciones de envío previas al envío del Producto mencionado a Global. Usted deberá incluir su número de ADM con el envío del Producto correspondiente, junto con una copia fiel del recibo original que incluya la fecha de la compra del Producto realizada por usted.

Por favor tenga en cuenta que usted será responsable de todos los gastos de envío resultantes de la devolución de un artículo para su reemplazo o reparación. Global deberá abonar el envío de devolución del Producto reparado o reemplazado a direcciones dentro de Estados Unidos y Canadá solamente. Los gastos de envío a todas las demás direcciones fuera de Estados Unidos y Canadá quedan bajo su responsabilidad. En el caso de que Global estableciera que un Producto no se encuentra contemplado en la presente Garantía Limitada, usted deberá pagar todos los repuestos, la mano de obra y los gastos de envío por la devolución de dicho Producto

4. EXCLUSIONES Y LIMITACIONES DE LA GARANTÍA

SALVO EN LA MEDIDA EXPRESAMENTE ESTABLECIDA ANTERIORMENTE, NO EXISTEN DENTRO DE LA PRESENTE GARANTÍA EXPRESAS O IMPLÍCITAS, INCLUIDAS, AUNQUE SIN LIMITACIÓN, GARANTÍAS IMPLÍCITAS DE COMERCIABILIDAD O IDONEIDAD PARA UN PROPÓSITO DETERMINADO Y GLOBAL RECHAZA CUALQUIER TIPO DE GARANTÍA NO INCLUIDA EN LA PRESENTE.

SALVO EN LA MEDIDA EXPRESAMENTE ESTABLECIDA ANTERIORMENTE, LOS PRODUCTOS SON ENTREGADOS EN EL "ESTADO EN QUE SE ENCUENTRAN". GLOBAL NO OFRECE GARANTÍA ALGUNA, NI EXPRESA NI IMPLÍCITA, QUE PUDIERA SURGIR DURANTE EL TRANSCURSO DE UNA NEGOCIACIÓN O EL USO O QUE SEAN ESTABLECIDAS POR LEY, EN LO QUE RESPECTA A LOS PRODUCTOS O A CUALQUIER OTRO ASUNTO. LA PRESENTE CONSTITUYE UNA GARANTÍA LIMITADA Y ES LA ÚNICA GARANTÍA OTORGADA POR GLOBAL. LOS MANDATARIOS, EMPLEADOS, DISTRIBUIDORES Y COMERCIANTES DE GLOBAL NO PODRÁN REALIZAR MODIFICACIONES A LA PRESENTE GARANTÍA LIMITADA NI PRESTAR GARANTÍAS ADICIONALES QUE OBLIGUEN LEGALMENTE A GLOBAL. EN CONSECUENCIA, TODA DECLARACIÓN ADICIONAL, TALES COMO PUBLICIDADES O PRESENTACIONES DEL COMERCIANTE, YA SEAN ORALES O ESCRITAS, NO CONSTITUIRÁN GARANTÍAS OTORGADAS POR GLOBAL Y NO DEBERÁN CONSIDERARSE VÁLIDAS. GLOBAL NO GARANTIZA QUE LOS PRODUCTOS FUNCIONEN SIN FALLAS O QUE SATISFAGAN SUS NECESIDADES O EXPECTATIVAS. DADO QUE NO EN TODAS LAS JURISDICCIONES RIGEN DICHAS LIMITACIONES EN LAS INDEMNIZACIONES, LAS LIMITACIONES DE LA CLÁUSULA PUEDEN NO SER DE APLICACIÓN EN SU CASO.

5. ELECCIÓN DE LA LEGISLACIÓN Y JURISDICCIÓN

PARA COMPRAS REALIZADAS DENTRO DE LOS ESTADOS UNIDOS, la presente Garantía Limitada estará sujeta únicamente a las leyes del Estado de Nueva York, según se aplica a los contratos celebrados en el Estado de Nueva York entre residentes del Estado de Nueva York. Toda controversia que surja en virtud de la presente Garantía quedará sujeta a la sola jurisdicción de los Tribunales Estatales y Federales ubicados en el Condado de Nassau, Nueva York. Por medio de la presente Garantía, las partes acuerdan someterse a la jurisdicción personal de dichos tribunales.

PARA COMPRAS REALIZADAS EN CANADÁ - La presente Garantía Limitada quedará sujeta únicamente a las leyes de la Provincia de Ontario. Toda controversia que surja en virtud de la presente Garantía quedará sujeta a la sola jurisdicción de Ontario, Canadá. Por medio de la presente Garantía, las partes acuerdan someterse a la jurisdicción personal de dichos tribunales.

INSCRIVEZ-VOUS EN LIGNE AU

<http://www.globalindustrial.com/wr> or <http://www.globalindustrial.ca/wr>

Garantie globale limitée de 1 an

1. GARANTIE LIMITÉE

Global Equipment Company Inc. (DBA Global Industrial) («Global») vous garantit, l'acheteur initial et à l'utilisateur («vous» ou «votre»), que les produits que vous avez achetés et qui accompagnent cette garantie limitée («produits») sont exempts de tout défaut de matériaux et fabrication dans des conditions normales d'utilisation conformément à la documentation suivant pour une période d'un an débutant à la date d'achat (la «période de garantie»).

Global réparera ou remplacera tout produit jugé défectueux et qui a été retourné, tel que stipulé à la section 3 ci-dessous, à Global. Un produit peut être remplacé par un produit neuf ou usagé et/ou par une révision actuelle ou antérieure. Lorsque Global détermine à son seul jugement que la réparation ou le remplacement de ce produit n'est pas raisonnable, Global gardera le produit non conforme et vous remboursera le montant que vous avez payé pour ce produit. Les produits retournés sont soumis au reste de la période de garantie applicable par ailleurs. Toutes les pièces reconditionnées utilisées par Global sont soumises à toutes les mêmes dispositions que celles qui s'appliquent autrement aux nouvelles pièces.

CE QUI PRÉCÈDE DÉCRIT LA RESPONSABILITÉ EXCLUSIVE DE GLOBAL, ET VOTRE SEUL RECOURS, POUR TOUT MANQUEMENT À LA GARANTIE. SI VOUS N'ÊTES PAS D'ACCORD AVEC LES TERMES DE CETTE GARANTIE LIMITÉE, VOUS DEVEZ RETOURNER LES PRODUITS INUTILISÉS ET DANS LEUR EMBALLAGE D'ORIGINE DANS LES TROIS (3) JOURS ET VOTRE PRIX D'ACHAT SERA REMBOURSÉ.

2. EXCLUSIONES DE GARANTIE ET LIMITATION DE RESPONSABILITÉ

La présente garantie limitée ne couvre pas: (i) les défauts ou dommages résultant d'actes de Dieu, d'accident, de mauvais usage ou d'abus, de surcharge, du dépassement de la capacité de poids recommandée, de négligence, des altérations, modification, service ou réparation par autre que Global ou ses fournisseurs de services tiers indépendants, y compris sans vos limites; (ii) d'un montage ou d'une installation ou d'une désinstallation, d'un fonctionnement ou d'un entretien incorrects, des connexions incorrectes avec des périphériques ou d'autres causes ne résultant pas de défauts dans les matériaux ou la fabrication de produits; (iii) tout produit pour lequel la vignette de garantie a été enlevée, modifiée ou défigurée; (iv) des conteneurs, piles, armoires, supports, logiciels ou accessoires d'expédition; (v) d'une usure normale; (vi) des dommages ou la perte de produits réparés ou remplacés pendant l'expédition par Global, sauf si ces dommages ou pertes sont causés par des emballages pauvres ou inadéquats par Global; ou (vii) des produits achetés en dehors des États-Unis ou du Canada.

GLOBAL NE POURRA EN AUCUN CAS ÊTRE TENU RESPONSABLE DE TOUTE PERTE D'UTILISATION, D'INTERRUPTION D'ACTIVITÉ OU DE TOUT DOMMAGE INDIRECT, SPÉCIAL, ACCIDENTEL, PUNITIF OU CONSÉCUTIF DE QUELQUE NATURE QUE CE SOIT (Y COMPRIS LES PERTES DE PROFITS), QUELLE QUE SOIT LA FORME D'ACTION CONTRACTUELLE, DÉDUCTUELLE (Y COMPRIS LA NÉGLIGENCE), LA RESPONSABILITÉ STRICTE DU PRODUIT OU AUTRE, MÊME SI GLOBAL A ÉTÉ AVISÉ DE LA POSSIBILITÉ DE TELS DOMMAGES. EN AUCUN CAS LA RESPONSABILITÉ ENTIERE CI-DESSUS DE GLOBAL NE DÉPASSERA CE QUI EST PLUS ÉLEVÉ ENTRE \$50 OU LE MONTANT QUE VOUS AVEZ EFFECTIVEMENT PAYÉ POUR LE PRODUIT DONNANT LIEU À CETTE RESPONSABILITÉ, INDÉPENDAMMENT DE LA CAUSE D'ACTION, DANS LE CONTRAT, LE DÉLIT, LA RESPONSABILITÉ STRICTE OU AUTREMENT. TOUTES LES JURISDICTIONS N'AUTORISENT PAS CES LIMITATIONS DE DOMMAGES, ET SORTIE QUE LES LIMITATIONS QUI PRÉCÈDENT PEUVENT NE PAS S'APPLIQUER À VOUS.

3. PROCÉDURE DE SERVICE SOUS GARANTIE

Avant de retourner tous les produits à Global pour le service de garantie, vous devez d'abord contacter Global, par téléphone au (800) 645-2986 (US) ou (888) 645-0878 (Canada) pour confirmer que ces produits sont couverts par cette garantie limitée. Si ces produits sont ainsi couverts, vous obtiendrez de Global un numéro d'autorisation de retour de matériel («ARM») et des instructions d'expédition avant toute expédition de ces produits à Global et vous devez inclure ce numéro ARM avec n'importe quelle expédition correspondante de produit, ainsi qu'une copie exacte et correcte du reçu original indiquant la date d'achat de l'achat de votre produit, ainsi qu'une description détaillée et écrite de tout problème de produit associé.

Veillez noter que vous êtes responsable de tous les frais d'expédition engagés pour retourner un article pour un échange ou une réparation. Global doit payer pour l'expédition de retour des produits réparés et/ou remplacés aux adresses aux États-Unis et au Canada seulement ainsi que pour les expéditions de retour à toutes les autres adresses à l'extérieur des États-Unis ou du Canada en revient de votre responsabilité. Si Global détermine que n'importe quel produit n'est pas couvert par cette garantie limitée, vous devez payer toutes les pièces, frais de main-d'œuvre et expédition de retour pour ce produit.

4. DÉNI DE GARANTIE ET LIMITATIONS

SAUF ET DANS LA MESURE EXPRESSEMENT ÉNONCÉE CI-DESSUS IL N'Y A AUCUNE GARANTIE, EXPRESSE OU IMPLICITE, Y COMPRIS MAIS SANS S'Y LIMITER À TOUTE GARANTIE DE QUALITÉ MARCHANDE OU D'ADAPTATION À UN USAGE PARTICULIER ET GLOBAL DÉCLINE EXPRESSEMENT TOUTES LES GARANTIES NON MENTIONNÉES DANS LE PRÉSENT DOCUMENT.

SAUF ET DANS LA MESURE EXPRESSEMENT ÉNONCÉE CI-DESSUS, LES PRODUITS SONT FOURNIS SUR UNE BASE «TEL QUEL» ET GLOBAL NE FAIT AUCUNE GARANTIE ADDITIONNELLE, EXPRESSE, IMPLICITE, DÉCOULANT DE COURS DE TRAITEMENT OU D'UTILISATION DU COMMERCE OU STATUTAIRE, QUANT AUX PRODUITS OU QUELQUE MATIÈRE QUE CE SOIT, IL S'AGIT D'UNE GARANTIE LIMITÉE ET EST LA SEULE GARANTIE FAITE PAR GLOBAL. LES AGENTS, LES EMPLOYÉS, LES DISTRIBUTEURS ET LES CONCESSIONNAIRES DE GLOBAL NE SONT PAS AUTORISÉS À APPORTER DES MODIFICATIONS À CETTE GARANTIE LIMITÉE, OU À FAIRE DES GARANTIES SUPPLÉMENTAIRES CONTRAIGNANTES POUR GLOBAL. PAR CONSÉQUENT, DES DÉCLARATIONS SUPPLÉMENTAIRES TELLES QUE LA PUBLICITÉ OU LA PRÉSENTATION DES CONCESSIONNAIRES, QU'ELLES SOIENT ORALES OU ÉCRITES, NE CONSTITUENT PAS DES GARANTIES GLOBALES ET NE DEVRAIENT PAS ÊTRE INVOQUÉES. GLOBAL NE GARANTIT PAS QUE LES PRODUITS FONCTIONNERONT SANS DÉFAILLANCE, OU QUE LES PRODUITS RÉPONDENT À VOS BESOINS OU À VOS ATTENTES. PAS TOUTES LES JURISDICTIONS NE PERMETTENT DE TELLES LIMITATIONS DE GARANTIE AINSI LES LIMITATIONS CI-DESSUS PEUVENT NE PAS S'APPLIQUER À VOUS.

5. CHOIX DE LA LOI ET DE LA JURIDICTION

POUR LES ACHATS AUX ÉTATS-UNIS : cette garantie limitée est soumise aux seules lois de l'état de New York, telles qu'appliquées aux contrats conclus dans l'état de New York entre les résidents de New York. Tout litige découlant des présentes est soumis à la seule compétence de l'État et des tribunaux fédéraux situés dans le comté de Nassau, New York. Les parties consentent par la présente à la compétence personnelle de ces tribunaux.

POUR LES ACHATS AU CANADA : cette garantie limitée est assujettie uniquement aux lois de la province de l'Ontario. Tout différend découlant des présentes est assujetti à la seule compétence de la province de l'Ontario, au Canada. Les parties consentent par la présente à la compétence personnelle de ces tribunaux.