

**User's manual**

**Manual del usuario**

**Manuel de l'utilisateur**

**Customer Service**  
US: 1-800-645-2986

**Servicio de atención al Cliente**  
US: 1-800-645-2986

**Service à la clientèle**  
Canada: 888-645-2986

## **Global Industrial<sup>TM</sup> 4-Seat Electric Utility Vehicle**

**Model: 615162**



**Unpacking and Assembly Instruction**

# Electric Utility Vehicle

## Crate Unpacking Instructions



**NOTE:**  
Please remove all wheels under crate immediately upon receipt.

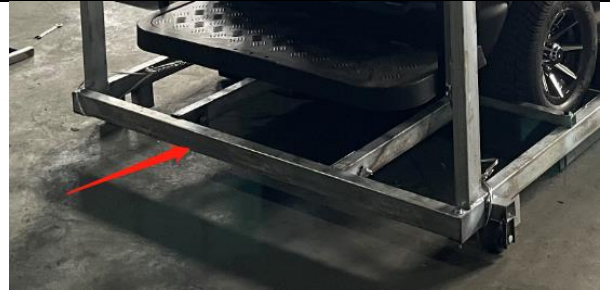
### Hardware List

Item	Hardware Description	Suggested Tools
1	ST5 self-tapping screw, Head size: <b>8mm</b>	Socket wrench/wrench, 8mm
2	M6 self-tapping screw, Head size: <b>10mm</b>	Socket wrench/wrench, 10mm
3	M6, hex head nut, Head size: <b>10mm</b>	Socket wrench/wrench, 10mm
4	M8 hex head screw/nut, Head size: <b>13mm</b>	Socket wrench/wrench, 13mm
5	M8 Hex socket head cap screw, Inner width: <b>6mm</b>	Hex wrench, 6mm
6	M10 hex head screw/nut, Head size: <b>17mm</b>	Socket wrench/wrench, 17mm
7	M12 hex head screw/nut, Head size: <b>19mm</b>	Socket wrench/wrench, 19mm
8	M6 Phillips head screw/hex head nut, Nut head size: <b>10mm</b>	Torx screwdriver, wrench 10mm

<p>1. Put the crate on a flat and clear surface.</p>	
<p>2. Unscrew the self-tapping screws (8mm tool) on the wood panels around the crate, in sequence from bottom to top.</p>	
<p>3. Cut the packing straps holding the roof box and set aside.</p>	
<p>4. Unscrew the bolts (M10) of the top beams (2 pcs) and remove the top beams.</p>	
<p>5. Unscrew the bolts (M10) of the outer side of the wheel chocks (6 pcs). Rotate the chock slightly away from the wheel, raise the inner edge of the chock to release it from the securing pin at the inner end, and then take out chock</p>	

# Electric Utility Vehicle

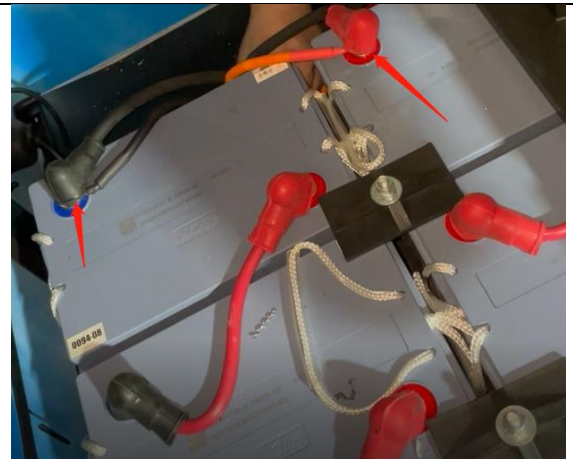
6. Unscrew the bolts (M12) of beam at lower side of rear end and remove the beam.



7. Cut the steel wires securing the wheels, and remove them from the crate. Review the parts list in next page. Ensure that each part is carefully inspected and recorded for any damage.

8. If you prefer to push the vehicle out of the crate, please follow the instructions below:
- Check and ensure the front wheels are facing forward. If not, refer to section 1 on how to assemble the steering wheel to re-orient the wheels.
  - Cut the steel wires securing the vehicle to the crate's frame.
  - Disengage the parking brake.
  - Push vehicle out backwards.

9. If you prefer to drive the vehicle out of crate, please follow the instructions below:
- Assemble the steering wheel first per section 1 in assembly instructions.
  - Flip open the front seat and connect the wire cable to battery as shown (5/16"-18). See related video for details.
  - Cut the steel wires securing the vehicle to the crate's frame.
  - Disengage the parking brake.
  - Drive the vehicle out of the crate carefully.



# Electric Utility Vehicle

## Assembly Components List



**NOTE:**

Please note that certain components come with pre-attached hardware to facilitate assembly.

Item	Component	Qty	Image	Item	Component	Qty	Image
1	Steering wheel	1		6	Rear grab bar	1	
2	Front roof strut	1		7	Hinged windshield	1	
3	Front seat backrest	1		8	Blue safety light	1	
	Rear seat backrest	1		9	Side view mirror (left)	1	
4	Rear roof strut	1			Side view mirror (right)	1	
5	Roof with top strut	1		10	Rear view mirror	1	

# Electric Utility Vehicle

## Assembly Components Hardware List

Item	Component	Hardware Description	Qty	Location
1	Steering wheel	Hex head lock nut, M24	1	On steering wheel post
2	Front roof strut	Socket head bolt, M8x45	4	In bag labeled "Hardware for Front Roof Struts"
		Black nickel lock washer, M8	2	
		Flat washer, M8	4	
		Hex head flange nut, M8	2	
3	Front & rear seat backrest	Phillips head bolt, M6x25	4	In bag labeled "Hardware for Front/Rear Seat Backrest"
		Black nickel spring washer, M6	4	
		Black nickel flat washer, M6	8	
		Black hex head nut, M6	4	
4	Rear roof strut	Hex head bolt, M8x50	4	On rear roof strut
		Black nickel flat washer, M8	4	
		Black nickel hex head flange lock nut, M8	4	
5	Roof with top strut	Hex head bolt, M8x45	3	On top roof strut
		Hex head bolt, M8x65	4	
		Black nickel flat washer, M8	11	
		Black nickel spring washer, M8	4	
		Black nickel hex cap nut, M8	4	
		Black hex head flange nut, M8	3	
6	Rear grab bar	Hex head bolt, M8x25	2	On rear grab bar
		Hex head bolt, M8x45	2	
		Black nickel flat washer, M8	4	
		Hex head flange nut, M8	4	
7	Hinged windshield	<b>NO HARDWARE</b>		
8	Blue safety light	Hex head nut, M8	1	With safety light
9	Side view mirrors	Self-tapping screw, M6x16	4	On side view mirrors
		Black nickel flat washer, M6	4	
		Hex cap nut, M6	4	
10	Rear view mirror	<b>NO HARDWARE</b>		

# Electric Utility Vehicle

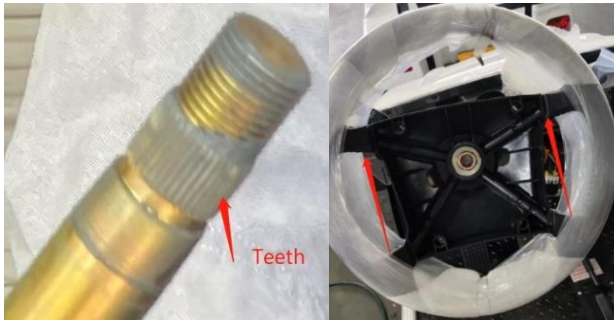
## Assembly Instructions

### 1. Steering Wheel Assembly

- a. Unscrew the lock nut on the steering post.
- b. Snap off the cover on steering wheel.



- c. Place the wheel on the post, aligning it with the marked line.



- d. Secure the lock nut.



- e. Snap the cover back on steering wheel.



# Electric Utility Vehicle

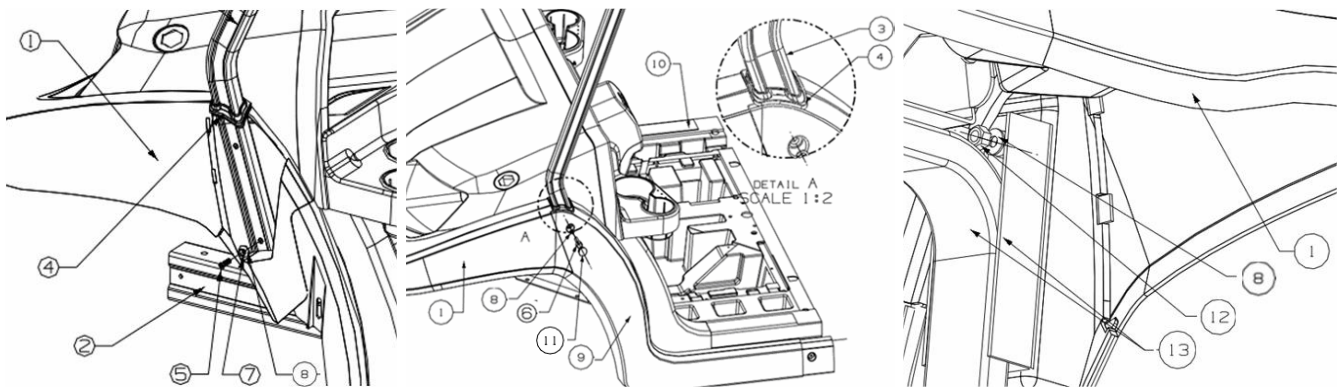
## 2. Front Roof Strut Assembly

\*See the diagrams and part list below for reference

- a. Peel off the adhesive tape on the side panels (9), then carefully pry open the side panels (*Figure 1*) and align the front roof strut to ensure it can be positioned correctly and secured with bolts.
- b. Ensure the rubber trims (4) are assembled on each side of the front roof strut (3).
- c. Position the front roof strut flush against the cowl, aligning the lower hole, and then fasten the bracket onto the vehicle using the screw (6), spring washer (7), flat washer (8) on both sides.
- d. Snap the side panels back onto the cowl, ensuring the edges of the rubber trims around the roof bracket are covered by the side panel.
- e. Bolt the side panel into the roof strut with screw (6) on the outer side of the side panel and flat washer (8) and lock nut (12) on opposite side of the side panel.



Figure 1



Item No.	Part No.	Part Description	Qty
1	5302010-107	Cowl	1
2	5101111-097	Girder	2
3	5701011-107	Roof strut, front	1
4	5708011-107	Roof strut rubber trim, front	2
6	Q218B0845	Socket head bolt, M8x45	4
7	Q403 08	Black nickel lock washer, M8	2
8	Q40108	Flat washer, M8	4
9	5502110-107	Side panel, front	2
10	5102010-107	Front floor	1
11	5708013-107	Front roof strut mounting bolt rubber plug	2
12	Q 32608	Hex head flange nut, M8	2
13	5301131-107	Front wall front pillar mounting bracket	1

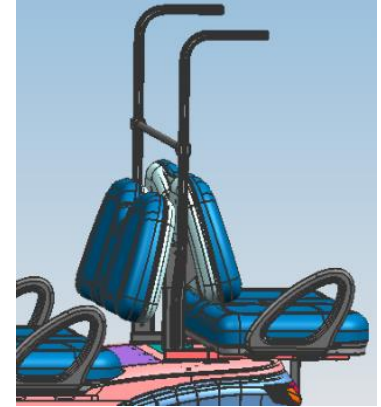
# Electric Utility Vehicle

## 3. Seat Backrest Assembly

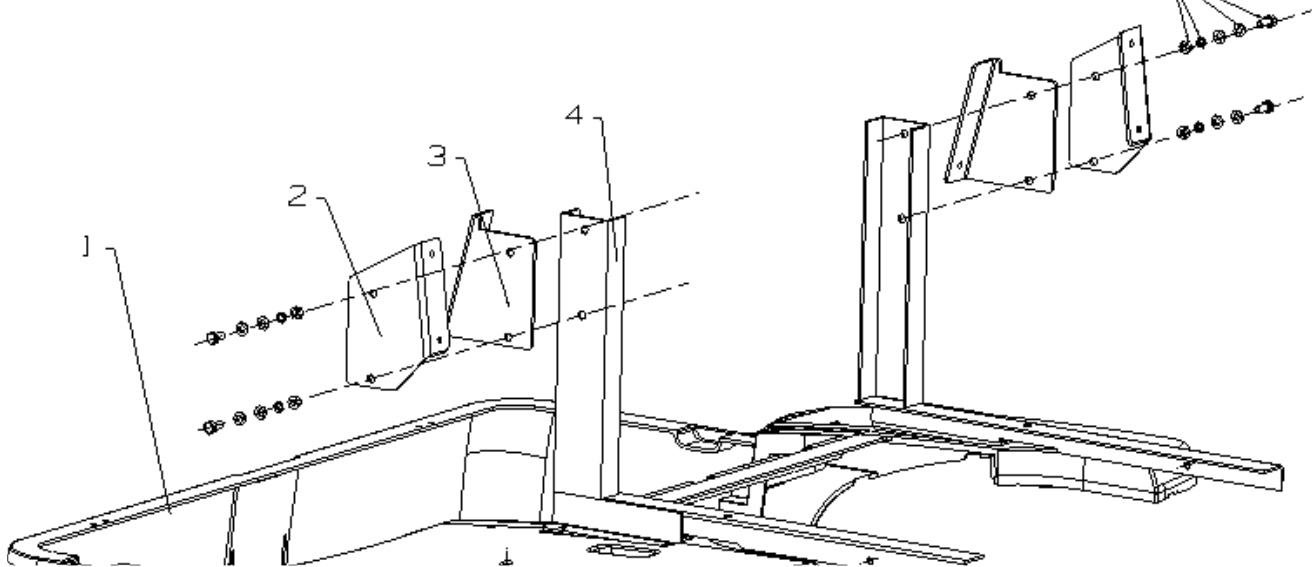


\*See the diagram below for reference

- Place the front backrest at the front side of main seat support bracket (4).
- Place the rear backrest at the rear side of the main seat support bracket (4), overlapping over the front backrest's bracket.
- Align the holes of front/rear backrest brackets and the main seat support and secure with bolt (5) and washer (6) through the holes first.
- On the opposite side, place the flat washer (6), spring washer (7) and nut (8) on and fasten nut.



5, 6, 7, 8



Item No.	Part No.	Part Description	Qty
1	5402010-107	Rear cover	1
2	7107012-108	Seat backrest bracket, rear	1
3	7107011-108	Seat backrest bracket, front	1
4	5401110-108	Seat bracket	2
5	Q 150B 08 25-304H	Phillips head bolt M6x25	4
6	Q40108-304H _	Black nickel flat washer, M6	8
7	Q40308-304H _	Black nickel spring washer, M6	4
8	Q394B08-304H _	Black hex head nut, M6	4



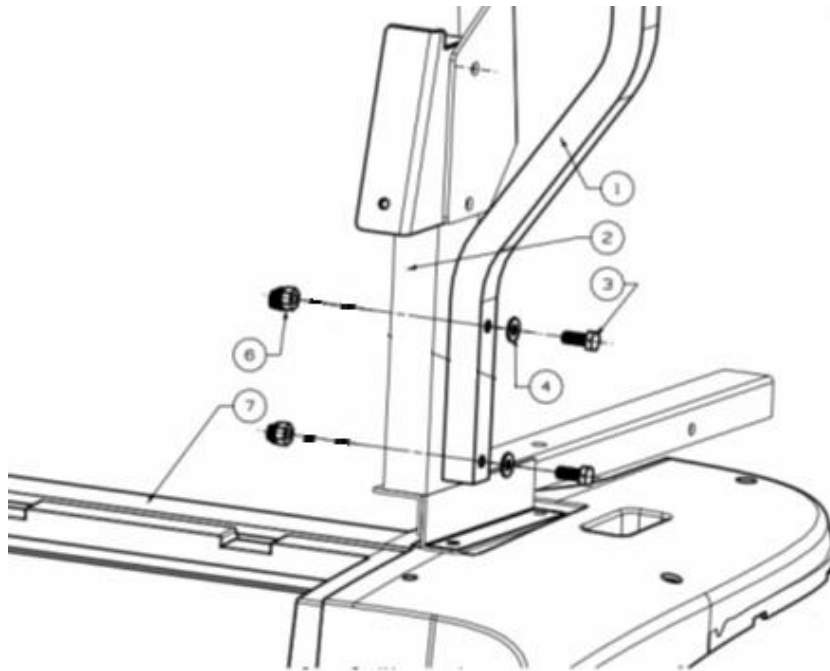
# Electric Utility Vehicle

## 4. Rear Roof Strut Assembly



\*See the diagram below for reference

- a. Remove all pre-assembled hardware attached to the part.
- b. Align the rear roof strut (1) to the seat bracket (2) per drawing below. Place one end with bolt (3), washer (4), and secure opposite end with a lock nut (6).



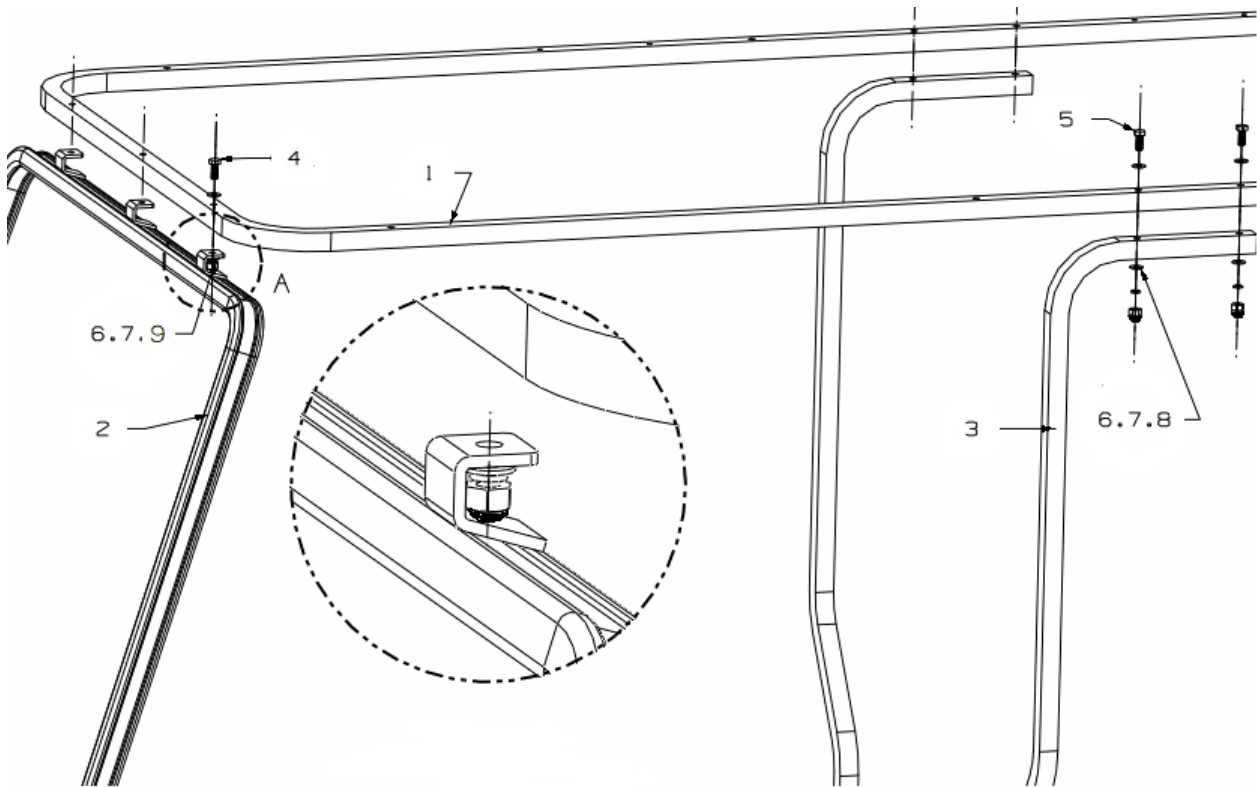
Item No.	Part No.	Part Description	Qty
1	5701021-108	Roof strut, rear	2
2	5401110-108	Seat bracket	2
3	Q 150B 08 40-304H	Hex head bolt, M8x50	4
4	Q40108-304H _	Black nickel flat washer, M8	4
6	Q394B08-304H _	Black hex head flange lock nut, M8	4
7	5402010-107	Rear cover	1

# Electric Utility Vehicle

## 5. Roof with Top Strut Assembly

\*See the diagram below for reference

- Remove all pre-assembled hardware attached to the part.
- Align the roof with top struts assembly with the front roof strut (2) and rear roof strut (3).
- In the front, place M8x45 bolts (3) through the holes and in the rear, place M8x65 bolts (5) and washers (6) (pre-assembled with roof) through the holes.
- Fasten bolts in the front with washer (6), spring washer (7), and flange nut (9).
- Fasten bolts at the rear with washer (6), spring washer (7), and cap nut (8).



Item No.	Part No.	Part Description	Qty
1	5701061-108	Roof strut, top	1
2	5701010-108	Roof strut, front	1
3	5701021-108	Roof strut, rear	1
4	Q 150B 08 40-304H	Hex head bolt, M8x45	3
5	Q 150B 0865-304H _	Hex head bolt, M8x65	4
6	Q40108-304H _	Black nickel flat washer, M8	11
7	Q40308-304H _	Black nickel spring washer, M8	4
8	Q394B08-304H _	Black nickel, cap nut, M8	4
9		Black hex head flange nut, M8	3

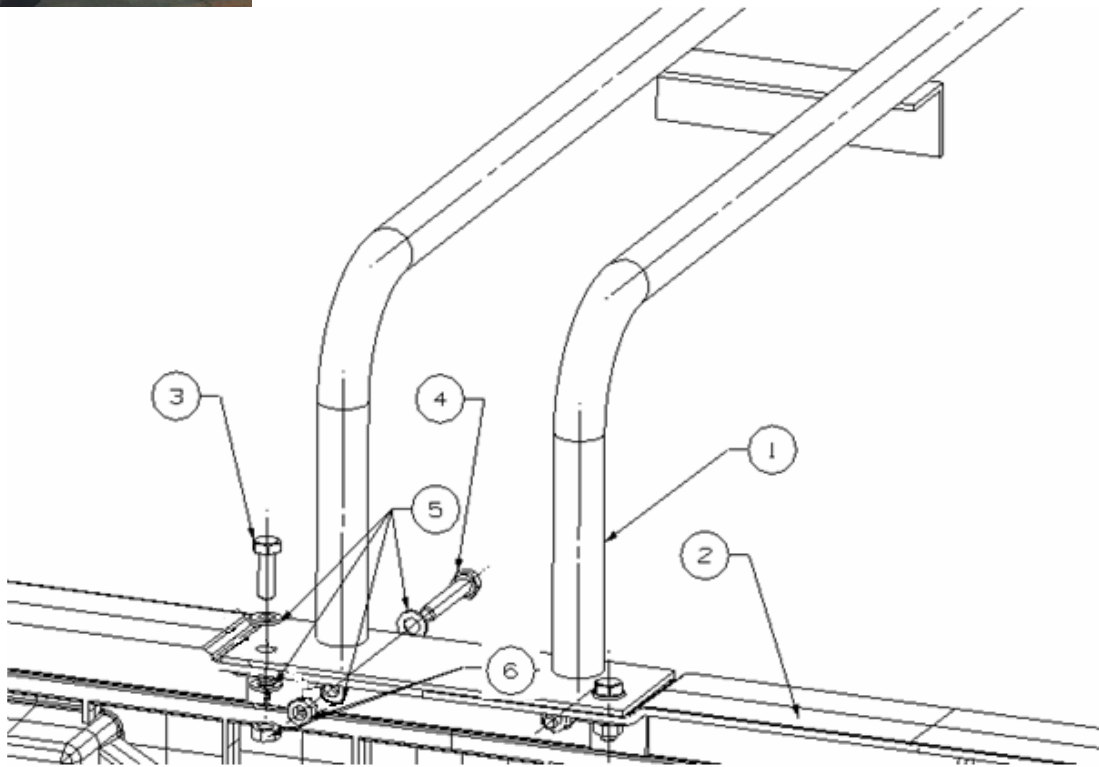
# Electric Utility Vehicle

## 6. Rear Grab Bar Assembly



\*See the diagram below for reference

- Remove all pre-assembled hardware attached to the part.
- Place the handrail in position as shown.
- Put the hardware in as show separately, then fix them tightly.



Item No.	Part No.	Part Description	Qty
1	7202010-109	Rear grab bar	1
2	5402071-108	Footrest edge	1
3	Q 150B 08 25-304H	Hex head bolt, M8x25	2
4	Q 150B 08 50-304H	Hex head bolt, M8x45	2
5	Q40108-304H _	Black nickel flat washer, M8	4
6	Q 326 08	Hex head flange nut, M8	4

# Electric Utility Vehicle

## 7. Hinged Windshield Assembly

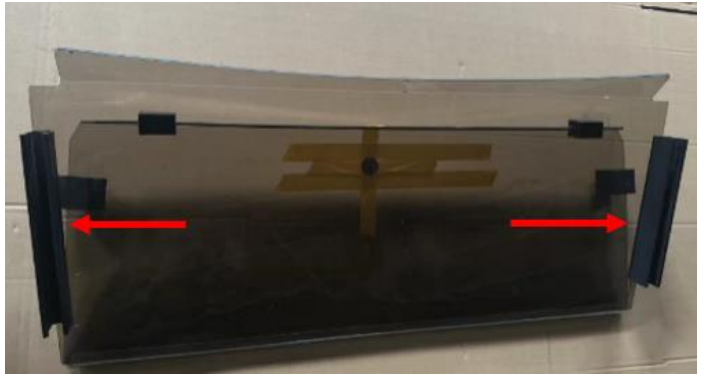
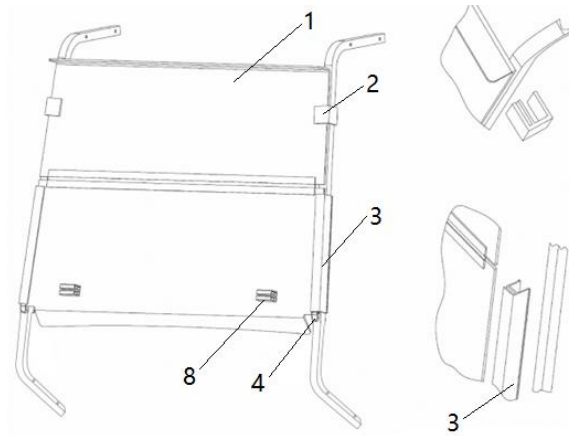


Figure 2

\*See the diagram below for reference

- Check the orientation of the windshield with respect to the vehicle. The bottom half of the windshield should have the larger sash clips oriented towards the front strut (Figure 2).
- Align the sash clips (3) with the holding block on the front strut on both side and snap into place.
- Unfold the upper part of the hinged windshield upwards and snap the clips (2) onto the front strut on both sides.



Item No.	Part No.	Part Description	Qty
1	5303010-043	Folding windshield	1
2		Slip block (pre-assembled on windshield)	2
3	5303021-041	Sash clips	2
4	5303022-011	Holding block (pre-assembled on front roof strut)	2
8		Clipping block (pre-assembled on windshield)	2

# Electric Utility Vehicle

## 8. Blue Safety Light Assembly

- a. Bolt the blue safety light bracket onto the roof with attached hardware (M8).



- b. Connect the wire accordingly: F to E, D to C, and B to A (under the front righthand side of the vehicle chassis, *Figure 3*).



Figure 3

## 9. Side View Mirror Assembly



- a. Remove all pre-assembled hardware attached to the side view mirrors.



- b. Assemble the left/right mirror onto the brackets with hardware.

# Electric Utility Vehicle

## 10. Rear View Mirror Assembly

---

The base plate is pre-assembled at the top of the windshield, as shown below. To assemble the inner mirror, place the mirror base on the base plate with the mirror facing the left side of the vehicle. Rotate the mirror 90 degrees clockwise, locking the mirror into the base plate.

