



STAINLESS STEEL  
**WORK TABLES**

**STANDARD Series - Flat Top - UNDERSHELF Style**



Item #: \_\_\_\_\_ Qty #: \_\_\_\_\_  
 Model #: \_\_\_\_\_  
 Project #: \_\_\_\_\_

**FEATURES:**

Top is furnished with 1-5/8" sanitary rolled rim edges on front & back and square side edges.

To reinforce and maintain a level working surface, 24" wide tables are supplied with TWO hat channels and 30" and 36" wide tables are supplied with THREE hat channels.

Pre-engineered welded angle adapters insure ease of future drawer installation.

Aluminum die cast "leg-to-shelf" clamp secures shelf to leg eliminating unsightly nuts & bolts. Undershelf is adjustable.

**CONSTRUCTION:**

All TIG welded. Exposed weld areas polished to match adjacent surfaces.

Entire top mechanically polished to a satin finish.

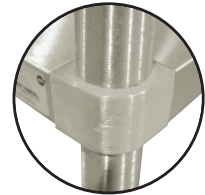
Top is sound deadened.

Roll formed embossed galvanized hat channels are secured to top by means of structural adhesive and weld studs.

Gussets welded to support hat sections.



**Rolled Rim Edges on Front & Back and Square Side Edges**



*Featuring as Standard:*  
**"THE PROVEN"**  
 ORIGINAL ADVANCE TABCO  
**Adjustable Undershelf with Die Cast Leg Clamp**

**MATERIAL:**

**MS-SERIES: Stainless Steel Legs & Undershelf**

**TOP:** 16 gauge stainless steel type "304" series.

**SHELF:** 18 gauge stainless steel.

**LEGS:** 1 5/8" diameter tubular stainless steel.  
 1" adjustable **stainless steel** bullet feet.  
 Stainless steel gussets.

**MG-SERIES: Galvanized Legs & Undershelf**

**TOP:** 16 gauge stainless steel type "304" series.

**SHELF:** 18 gauge galvanized steel.

**LEGS:** 1 5/8" diameter tubular galvanized steel.  
 1" adjustable plastic feet.  
 Galvanized steel gussets.

**MS-Series:**

**Stainless Steel Legs & Undershelf**

L	24" Wide	30" Wide	36" Wide
30"	MS-240	MS-300	
24"	MS-242	MS-302	
36"	MS-243	MS-303	MS-363
48"	MS-244	MS-304	MS-364
60"	MS-245	MS-305	MS-365
72"	MS-246	MS-306	MS-366
84"	MS-247	MS-307	MS-367
96"	MS-248	MS-308	MS-368
108"	MS-249	MS-309	MS-369
120"	MS-2410	MS-3010	MS-3610
132"	MS-2411	MS-3011	MS-3611
144"	MS-2412	MS-3012	MS-3612



**MG-Series:**

**Galvanized Steel Legs & Undershelf**

L	24" Wide	30" Wide	36" Wide
30"	MG-240	MG-300	
24"	MG-242	MG-302	
36"	MG-243	MG-303	MG-363
48"	MG-244	MG-304	MG-364
60"	MG-245	MG-305	MG-365
72"	MG-246	MG-306	MG-366
84"	MG-247	MG-307	MG-367
96"	MG-248	MG-308	MG-368
108"	MG-249	MG-309	MG-369
120"	MG-2410	MG-3010	MG-3610
132"	MG-2411	MG-3011	MG-3611
144"	MG-2412	MG-3012	MG-3612

**Create Your Own Efficient Workstation with the Available Standard Accessories (Visit Section K)**



**Customer Service Available To Assist You 1-800-645-3166 8:30 am - 7:00 pm E.S.T.**

For Orders & Customer Service:

Email: customer@advancetabco.com or Fax: 631-242-6900

For Smart Fabrication™ Quotes:

Email: smartfab@advancetabco.com or Fax: 631-586-2933

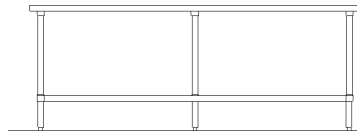
# DIMENSIONS and SPECIFICATIONS

ALL DIMENSIONS ARE TYPICAL TOL ± .500"

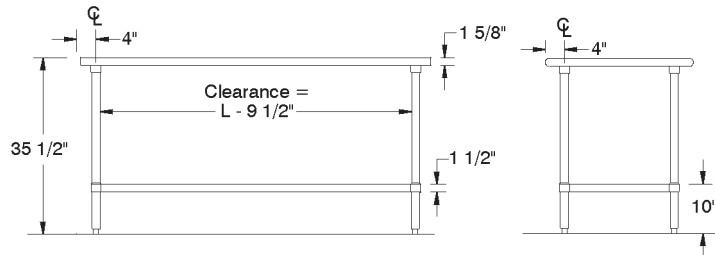
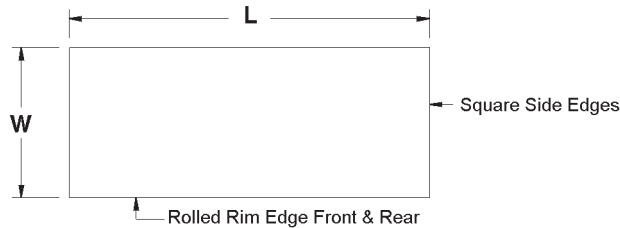
All Units Shipped Unassembled (KD) for Reduced Shipping Costs.

## MS & MG Series UNDERSHELF Style FLAT TOP

Finished size of undershelf = Length minus 5 3/4"  
Width minus 5 3/4"



Units 8 ft. and larger are furnished with six (6) legs



### MS-Series: Stainless Steel Legs & Undershelf

L	24" Wide	Wt.	30" Wide	Wt.	36" Wide	Wt.
30"	MS-240	49 lbs.	MS-300	65 lbs.		
24"	MS-242	31 lbs.	MS-302	55 lbs.		
36"	MS-243	64 lbs.	MS-303	72 lbs.	MS-363	88 lbs.
48"	MS-244	79 lbs.	MS-304	89 lbs.	MS-364	98 lbs.
60"	MS-245	92 lbs.	MS-305	107 lbs.	MS-365	118 lbs.
72"	MS-246	109 lbs.	MS-306	125 lbs.	MS-366	138 lbs.
84"	MS-247	130 lbs.	MS-307	148 lbs.	MS-367	164 lbs.
96"	MS-248	145 lbs.	MS-308	166 lbs.	MS-368	184 lbs.
108"	MS-249	161 lbs.	MS-309	176 lbs.	MS-369	190 lbs.
120"	MS-2410	261 lbs.	MS-3010	287 lbs.	MS-3610	308 lbs.
132"	MS-2411	293 lbs.	MS-3011	324 lbs.	MS-3611	358 lbs.
144"	MS-2412	308 lbs.	MS-3012	339 lbs.	MS-3612	373 lbs.

### MG-Series: Galvanized Steel Legs & Undershelf

L	24" Wide	Wt.	30" Wide	Wt.	36" Wide	Wt.
30"	MG-240	49 lbs.	MG-300	65 lbs.		
24"	MG-242	31 lbs.	MG-302	55 lbs.		
36"	MG-243	64 lbs.	MG-303	72 lbs.	MG-363	88 lbs.
48"	MG-244	79 lbs.	MG-304	89 lbs.	MG-364	98 lbs.
60"	MG-245	92 lbs.	MG-305	107 lbs.	MG-365	118 lbs.
72"	MG-246	109 lbs.	MG-306	125 lbs.	MG-366	138 lbs.
84"	MG-247	130 lbs.	MG-307	148 lbs.	MG-367	164 lbs.
96"	MG-248	145 lbs.	MG-308	166 lbs.	MG-368	184 lbs.
108"	MG-249	161 lbs.	MG-309	176 lbs.	MG-369	190 lbs.
120"	MG-2410	261 lbs.	MG-3010	287 lbs.	MG-3610	308 lbs.
132"	MG-2411	293 lbs.	MG-3011	324 lbs.	MG-3611	358 lbs.
144"	MG-2412	308 lbs.	MG-3012	339 lbs.	MG-3612	373 lbs.

