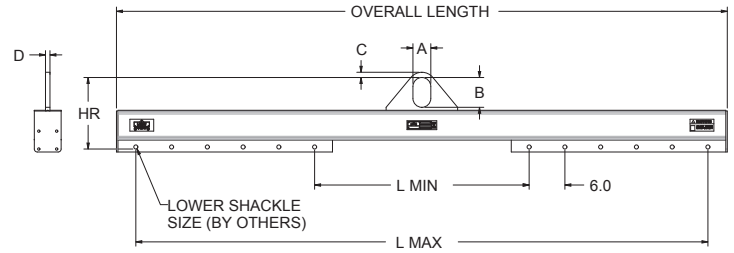


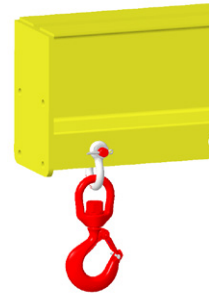
## Lifting Beams Low Headroom Adjustable



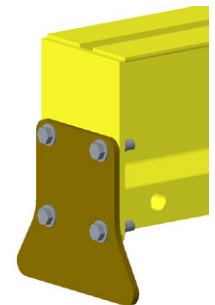
LIFT BEAMS

Lifting Beam - Low Headroom Adjustable										
Part Number	L MIN / L MAX (1' Spread ADJ)	Overall Length	Working Load Limit in Pounds*	A	B	C	D	HR	Lower Shackle Size	Weight
22148	3' - 5'	66.5	2,000	3	5	0.88	0.75	12	1/2"	140
22149	5' - 10'	126.5	2,000	3	5	0.88	0.75	12	1/2"	255
22150	10' - 15'	186.5	2,000	3	5	0.88	0.75	13	1/2"	395
22151	15' - 20'	246.5	2,000	3	5	0.88	0.75	14	1/2"	575
22152	3' - 5'	66.5	4,000	3	5	0.88	0.75	12	1/2"	145
22153	5' - 10'	126.5	4,000	3	5	0.88	0.75	13	1/2"	346
22154	10' - 15'	186.5	4,000	3	5	0.88	0.75	15	1/2"	435
22155	15' - 20'	246.5	4,000	3	5	0.88	0.75	17	1/2"	1,115
22156	3' - 5'	66.5	6,000	3	5	1.25	1	13.75	5/8"	217
22157	5' - 10'	126.5	6,000	3	5	1.25	1	15.75	5/8"	385
22158	10' - 15'	186.5	6,000	3	5	1.25	1	17.75	5/8"	748
22159	15' - 20'	246.5	6,000	3	5	1.25	1	17.75	5/8"	1,365
22160	3' - 5'	66.5	10,000	4	7	2	1.25	19.62	7/8"	348
22161	5' - 10'	126.5	10,000	4	7	2	1.25	19.62	7/8"	608
22162	10' - 15'	186.5	10,000	4	7	2	1.25	19.62	7/8"	1,116
22163	15' - 20'	246.5	10,000	4	7	2	1.25	21.62	7/8"	1,426
22164	3' - 5'	66.5	15,000	4	7	2	1.25	19.62	7/8"	348
22165	5' - 10'	126.5	15,000	4	7	2	1.25	19.62	7/8"	810
22166	10' - 15'	186.5	15,000	4	7	2	1.25	24.62	7/8"	1,237
22167	15' - 20'	246.5	15,000	4	7	2	1.25	24.62	7/8"	1,577
22168	3' - 5'	66.5	20,000	4	7	2	1.25	19.62	7/8"	348
22169	5' - 10'	126.5	20,000	4	7	2	1.25	21.62	7/8"	815
22170	10' - 15'	186.5	20,000	4	7	2	1.25	24.62	7/8"	1,248
22171	15' - 20'	247	20,000	4	7	2	1.25	23.2	7/8"	2,055
22172	3' - 5'	67	40,000	5	9	2.5	1.5	26.2	1 1/4"	706
22173	5' - 10'	127	40,000	5	9	2.5	1.5	26.2	1 1/4"	1,574
22174	10' - 15'	187	40,000	5	9	2.5	1.5	27.9	1 1/4"	2,098
22175	15' - 20'	247	40,000	5	9	2.5	1.5	27.9	1 1/4"	2,643
22176	3' - 5'	67	60,000	7	16	3.5	2	36	1 1/2"	1,023
22177	5' - 10'	127	60,000	7	16	3.5	2	36	1 1/2"	1,574
22178	10' - 15'	187	60,000	7	16	3.5	2	37.8	1 1/2"	2,389
22179	15' - 20'	247	60,000	7	16	3.5	2	45	1 1/2"	3,058
22180	3' - 5'	67	80,000	7	16	3.5	2.5	39.5	1 3/4"	1,443
22181	5' - 10'	127	80,000	7	16	3.5	2.5	39.5	1 3/4"	2,248
22182	10' - 15'	187	80,000	7	16	3.5	2.5	46.5	1 3/4"	2,763
22183	15' - 20'	247	80,000	7	16	3.5	2.5	49.5	1 3/4"	3,761

\* Call for specifications on larger sizes and capacities



**OPTIONAL SHACKLE & HOOK**



**OPTIONAL BOLT ON STAND**